



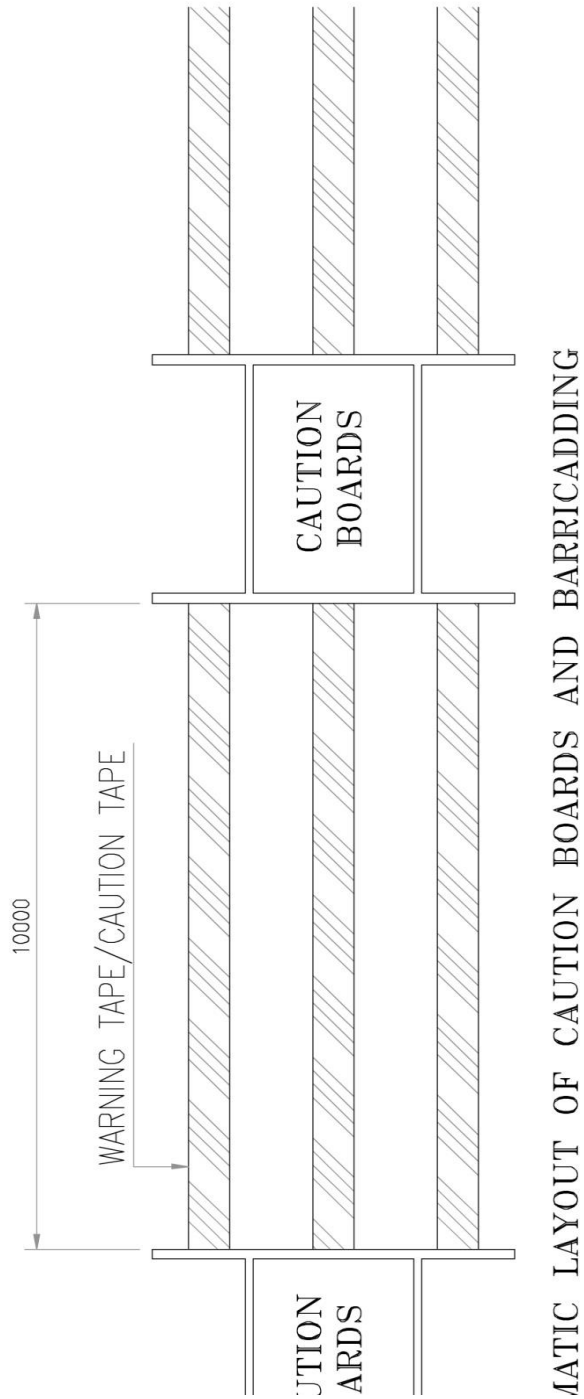
Vadodara Gas Limited

Standard Drawings [SD]



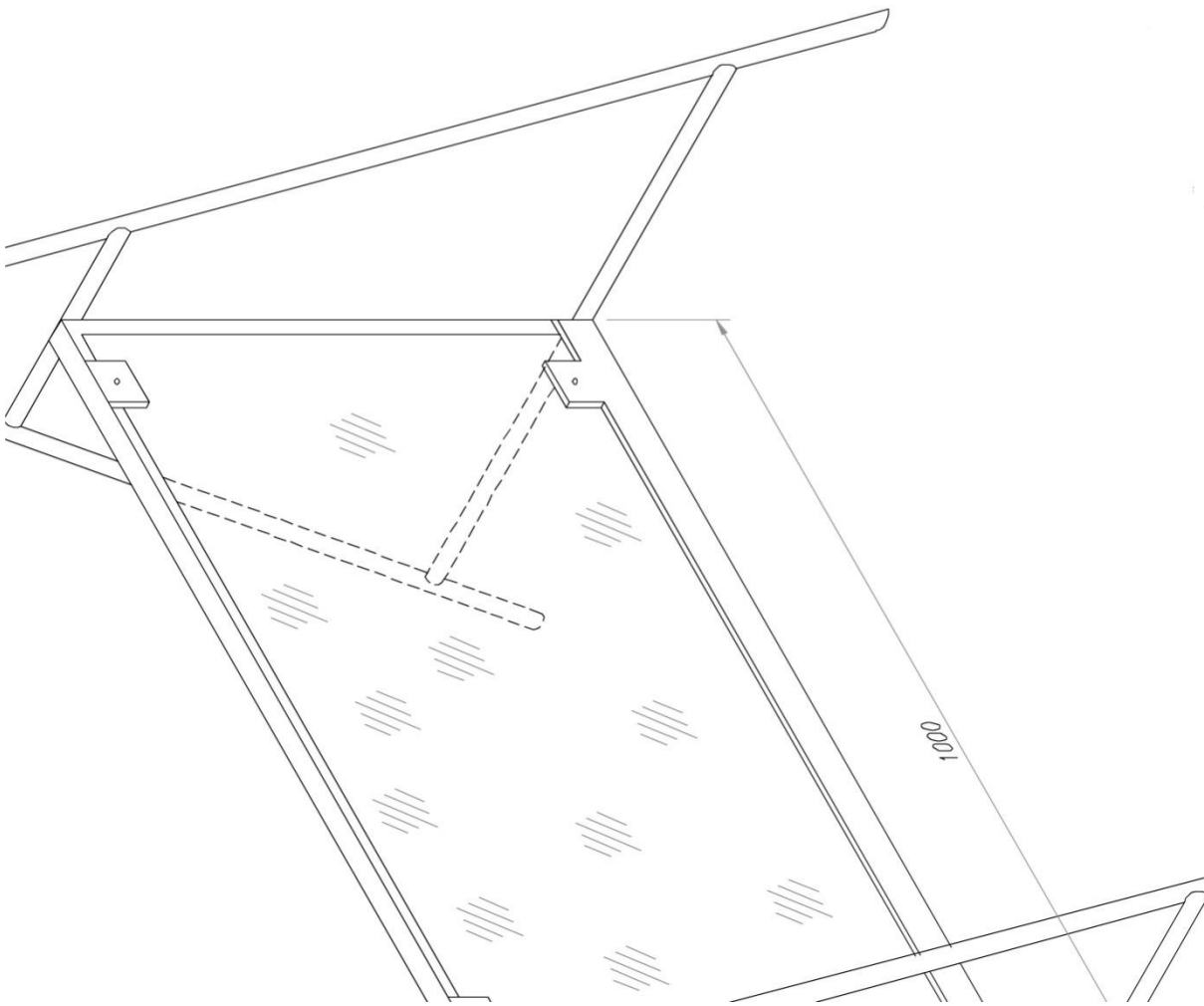
Vadodara Gas Limited

Sl. No.	Description
14	Standard Drawings
14.1	Barricading
14.2	Caution Board
14.3	Standard Sketch for Trench Cross Section with Pipeline
14.4	RCC Route Marker
14.5	Typical Underground Cable Crossing Details
14.6	Typical Half Round RCC Guard
14.7	Scheme For Ground Supply Connection
14.8	Pole Marker With Foundation (Individual Societies/ Areas)
14.9	Road/ Highway Cased crossing for MDEP Pipe
14.10	Typical Domestic Connection Layout of NG Distribution
14.11	Specification For Wood Screws
14.12	Typical Details of RCC Valve Chamber with Frame & Cover
14.13	Typical Trench Dimensions for Parallel Pipeline
14.14	Typical Domestic Connection Layout of NG Distribution
14.15	Typical Details for Bass Fittings
14.16	Typical Details for GI-PE Transition Fittings
14.17	Typical Detail for 3mm Thik PTFE Coating Boring Tool
14.18	Typical Details For GI Clamp
14.19	Typical Details For RCC Guard
14.20	Typical Service Regulator Foundation Details
14.21	Typical Mechanical Protection Concrete Slab Details



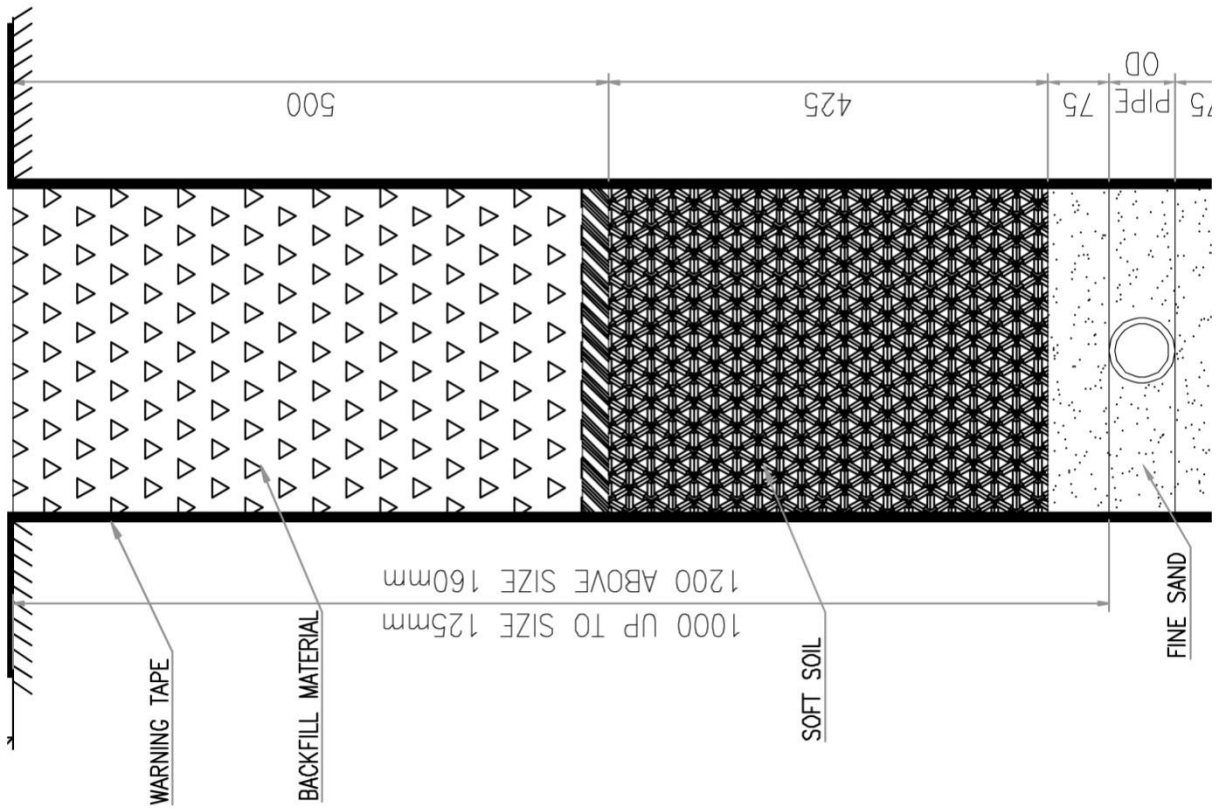


Vadodara Gas Limited



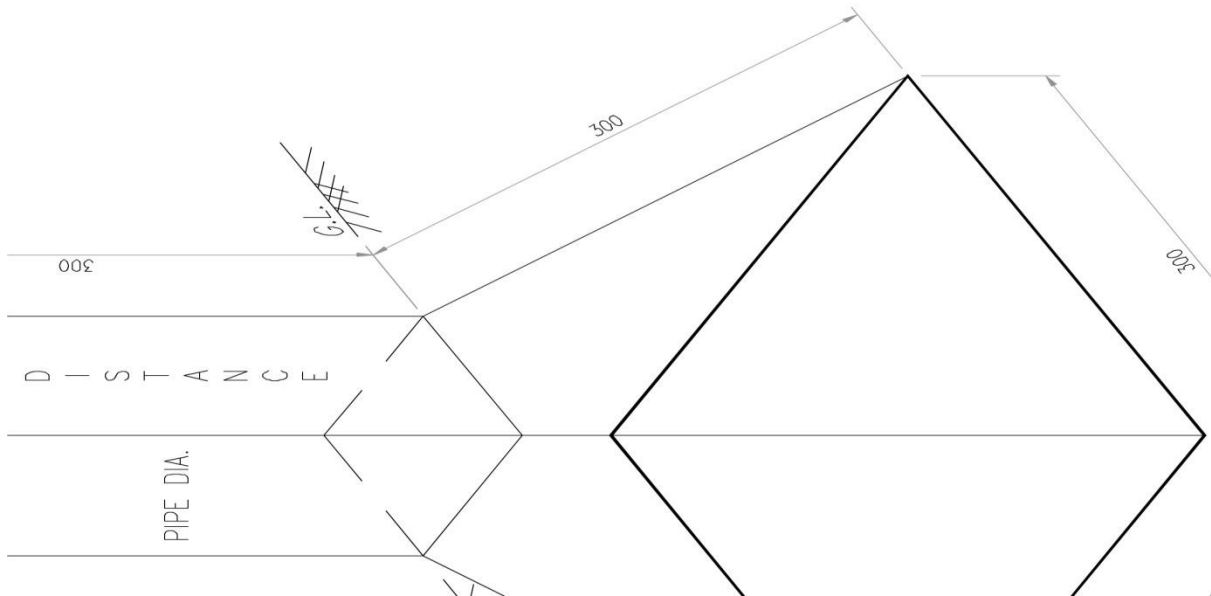


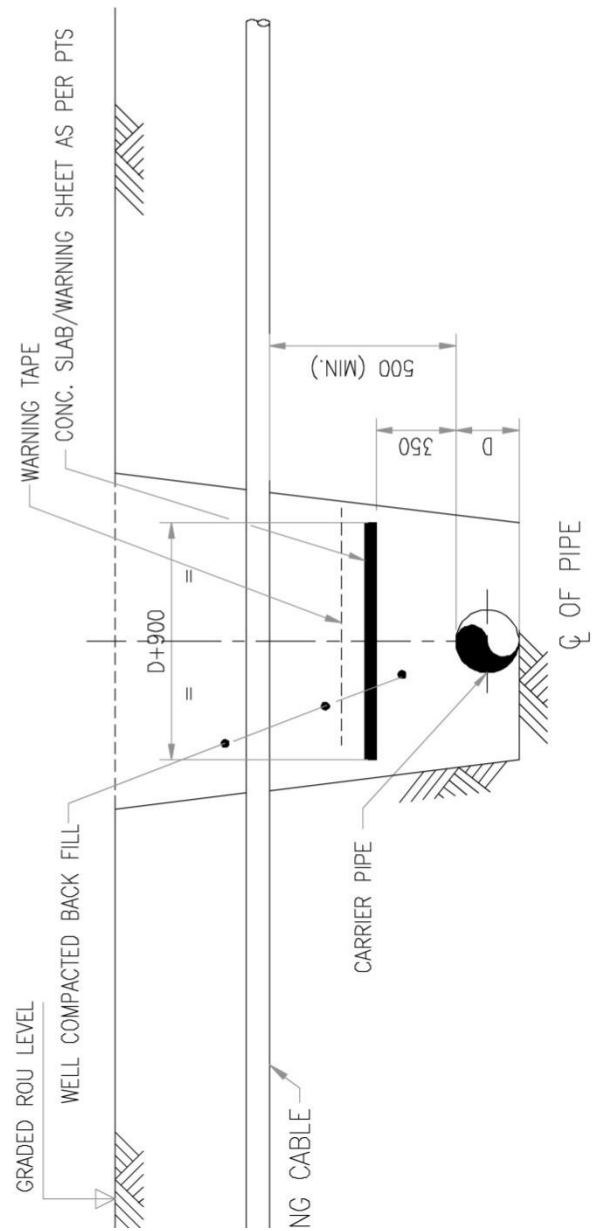
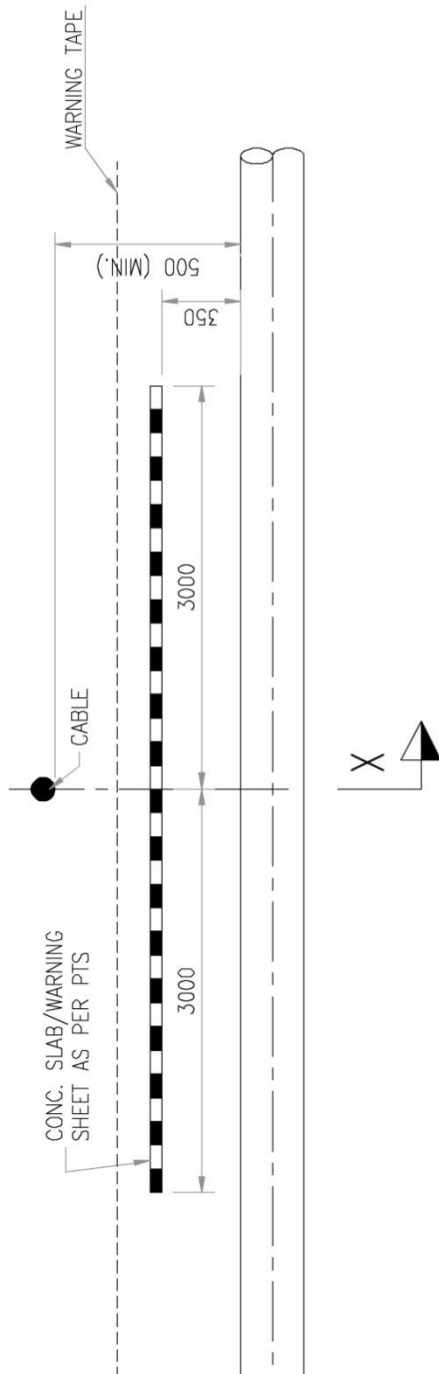
Vadodara Gas Limited





Vadodara Gas Limited

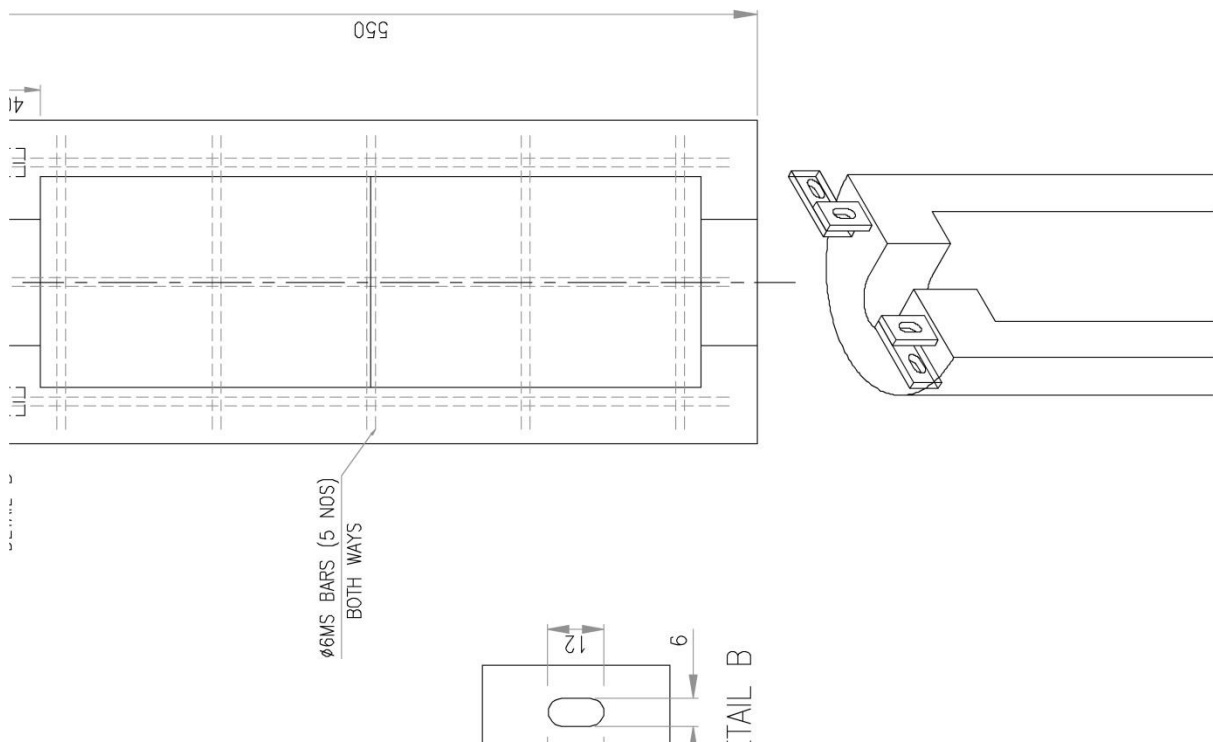


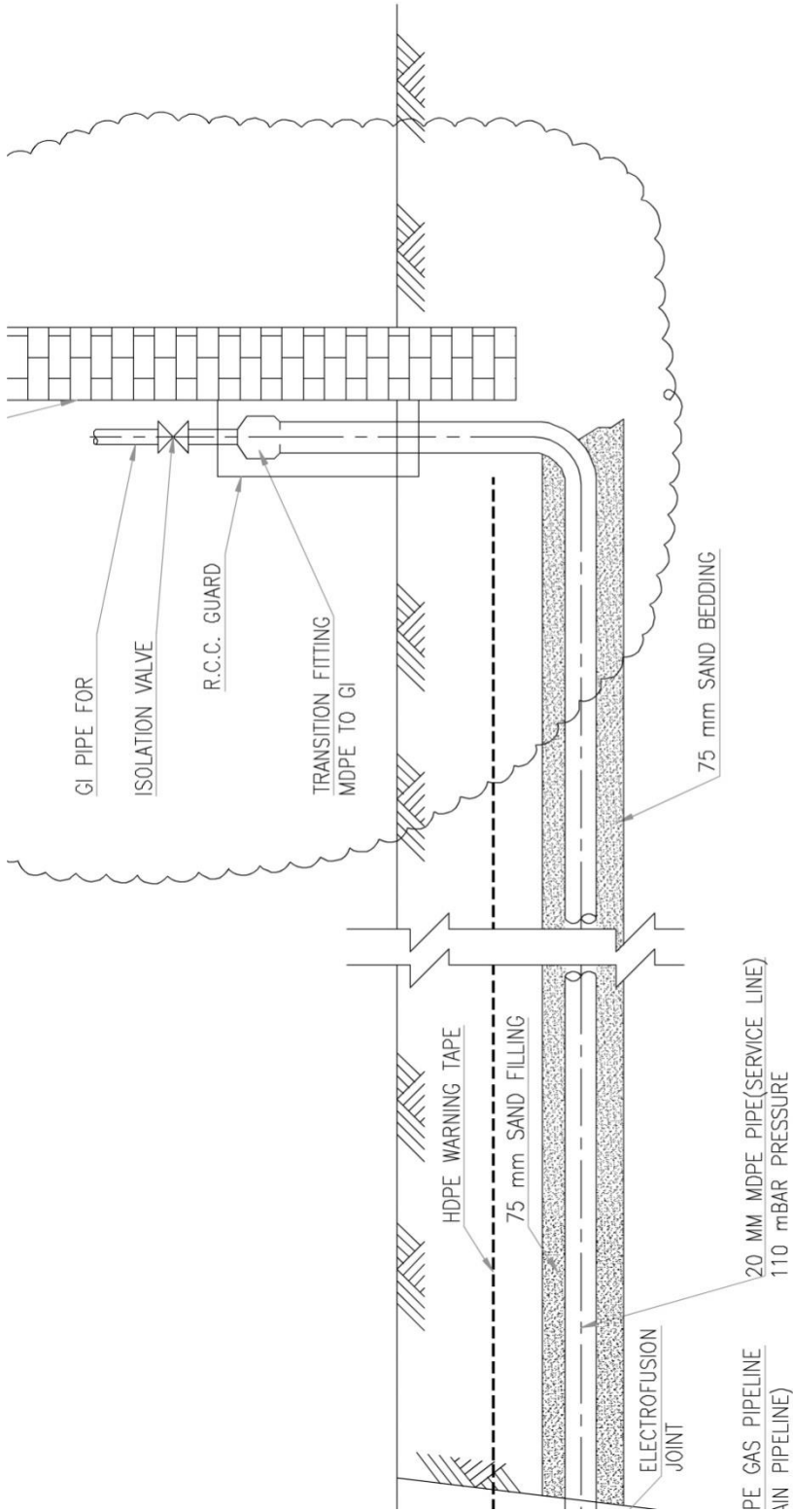


SECTION X-X



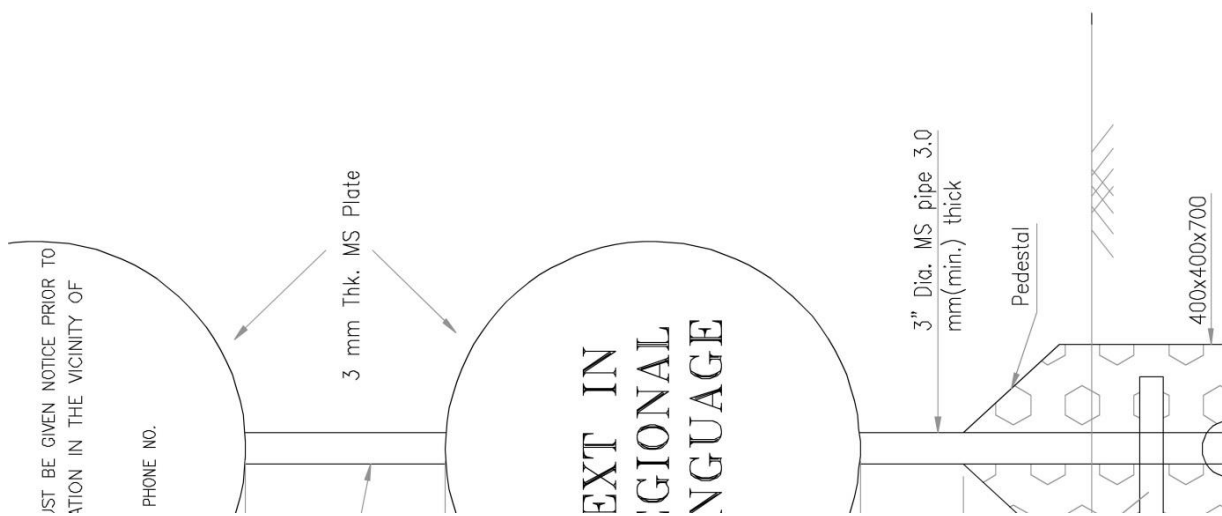
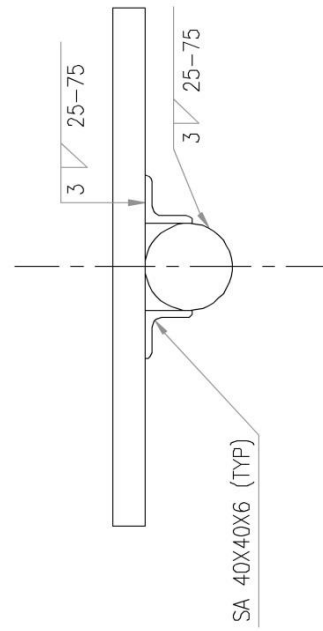
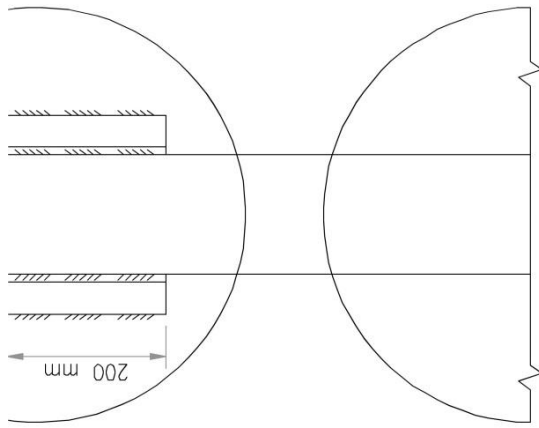
Vadodara Gas Limited







Vadodara Gas Limited



JUST BE GIVEN NOTICE PRIOR TO
ATION IN THE VICINITY OF

PHONE NO.

3 mm Thk. MS Plate

EXT IN
GIONAL
NGUAGE

3" Dia. MS pipe 3.0
mm(min.) thick

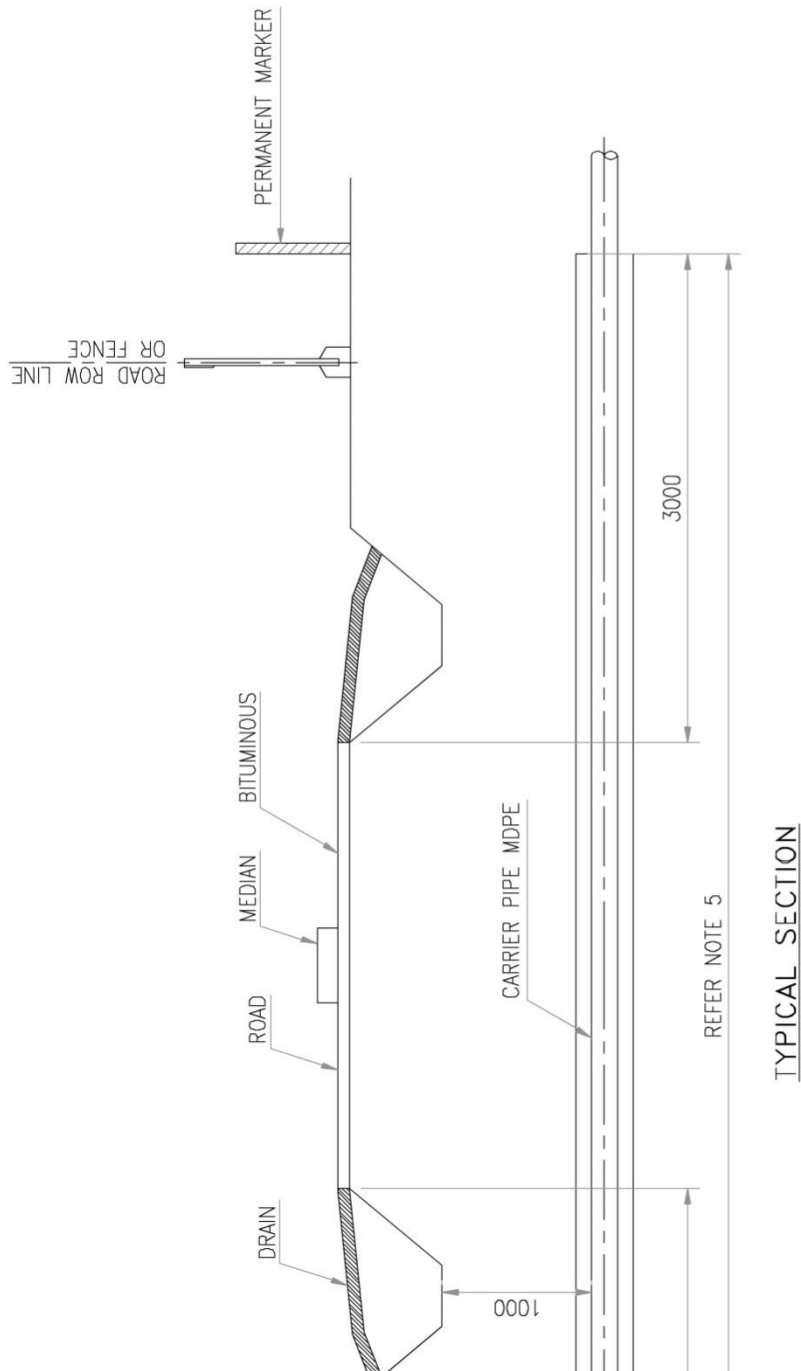
Pedestal

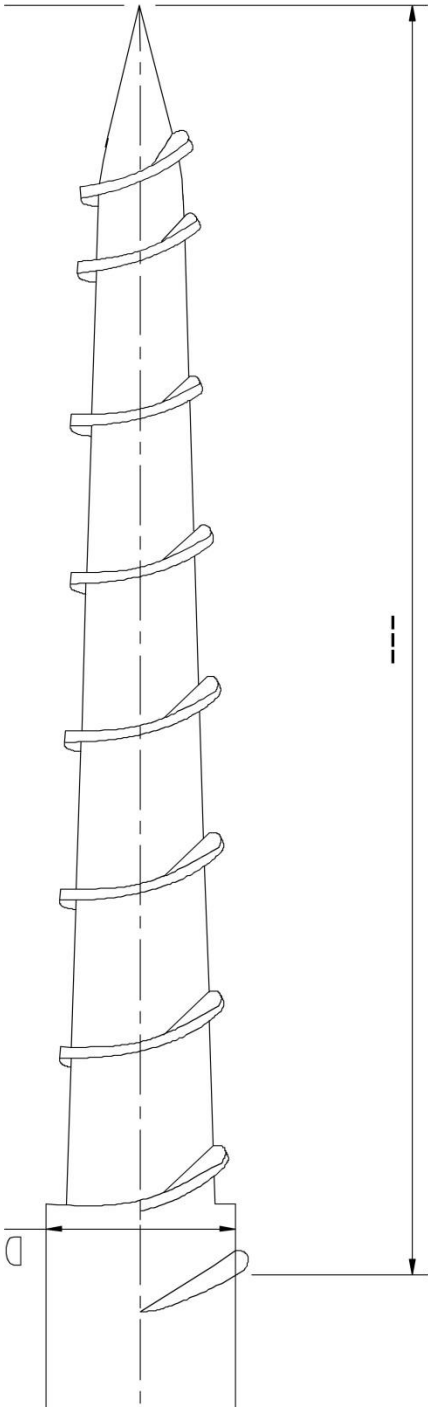
400x400x700



Vadodara Gas Limited

OF TI





O.	D∅			PITCH	V	D		c	s		h		I
	NOM.	MAX.	MIN.			MAX.	MIN		MAX.	MIN	MAX.	MIN	
	3.81	3.94	3.68	1.59	8.2	7.62	7.34	2.16	1.27	1.11	1.14	0.84	35

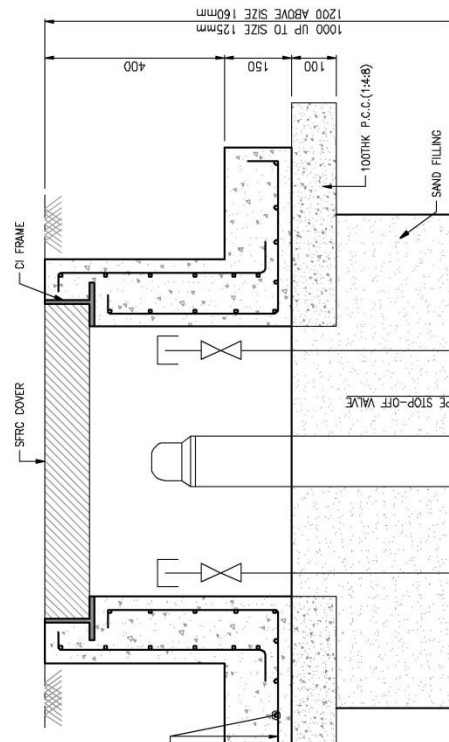
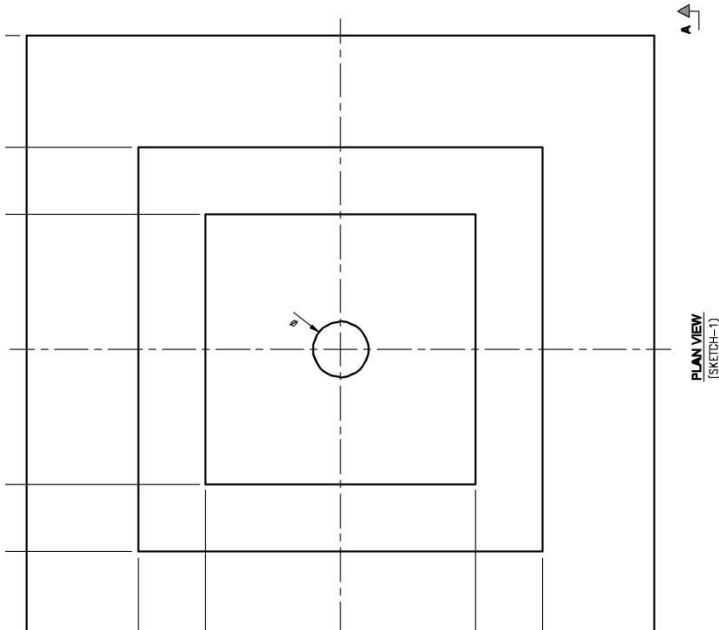
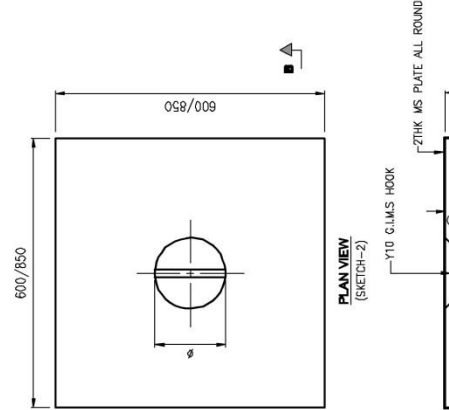
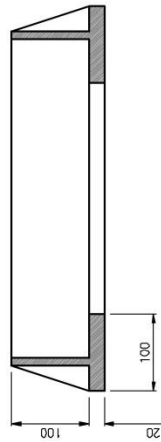
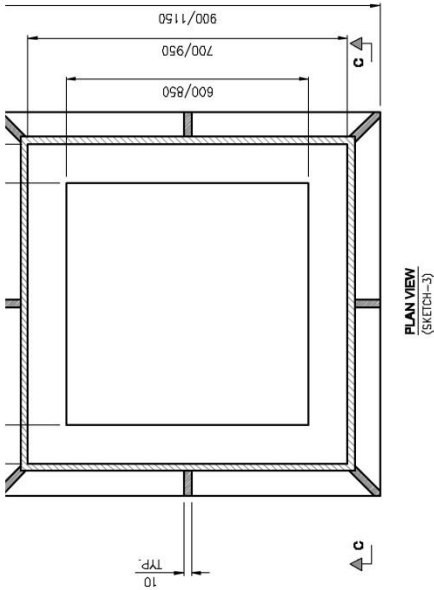


Vadodara Gas Limited

4. THE COVER FOR R/F SHALL BE 40mm ON FACE.
 5. THE SFRC COVER SHALL HAVE REINFORCED CONFIRMED TO IS:456-1978.
 6. DEBRIS BACKFILL TO BE REMOVED AND GOK OF 1.6M³ WITH PROPER COMPACTION /
 7. GASKET OF RUBBER OR ANY OTHER EQUIVA DIMENSIONS SHALL BE SUPPLIED & USED E INGRESS OF WATER INTO THE VALVE PIT.
 8. 75THK PCC(1:2:4) OF DIMENSION 300x300 63 TO 125 SHOULD BE PROVIDED FOR SUF AT THE BASE. RUBBER SHEET OF MIN. 6THI BASE OF THE VALVE AND PCC TOP SURFAC
- FOR SKETCH-1

1. ALL DIMENSIONS ARE IN mm.
 2. DO NOT SCALE THE DRAWING, FOLLOW WRIT
 3. THE SFRC COVER SHALL HAVE REINFORCED CONFIRMED TO IS:456-1978.
 4. HEAVY LOAD TEST : SUITABLE FOR CLASS A PERFORMANCE REQUIREMENTS.
 5. a) SAMPLING AND CRITERIA FOR CONFORMITY. AS PER IS:12592(PART-1)-1998
 - b) LOAD TEST: AS PER IS:12592(PART-1)-1998
 - c) INSPECTION AND MANUFACTURES GUARANTEE IS:12592(PART-1)-1998.
- FOR SKETCH-2

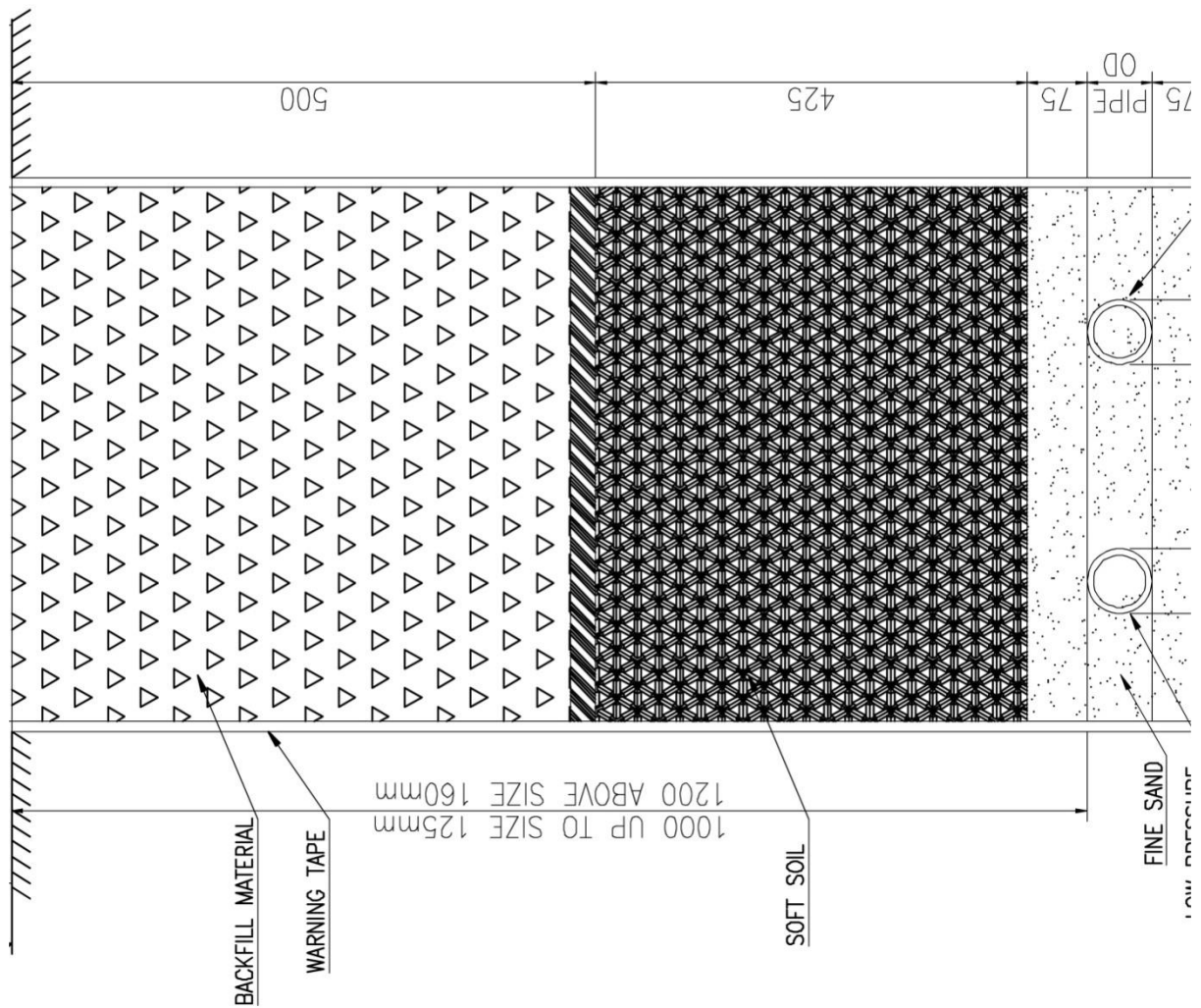
1. ALL DIMENSIONS ARE IN mm.
 2. DO NOT SCALE THE DRAWING, FOLLOW WRIT
 3. GRADE FG:50 OF IS:240-1978.
 4. HEAVY LOAD TEST : SUITABLE FOR CLASS A
- FOR SKETCH-3

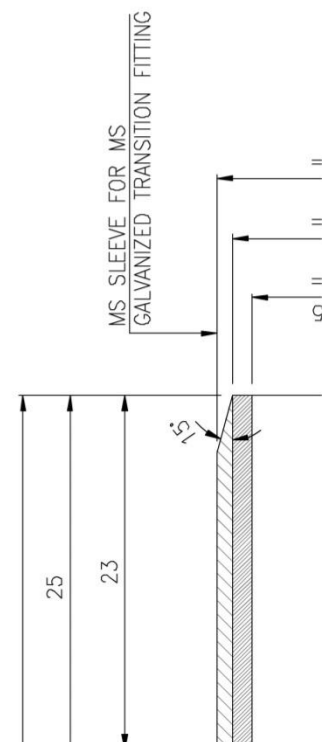
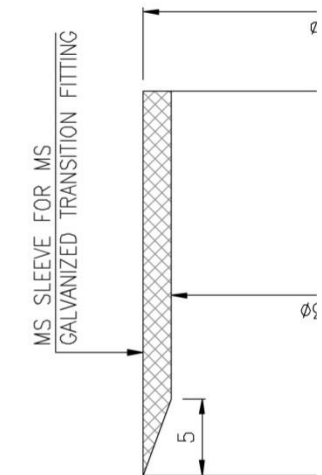
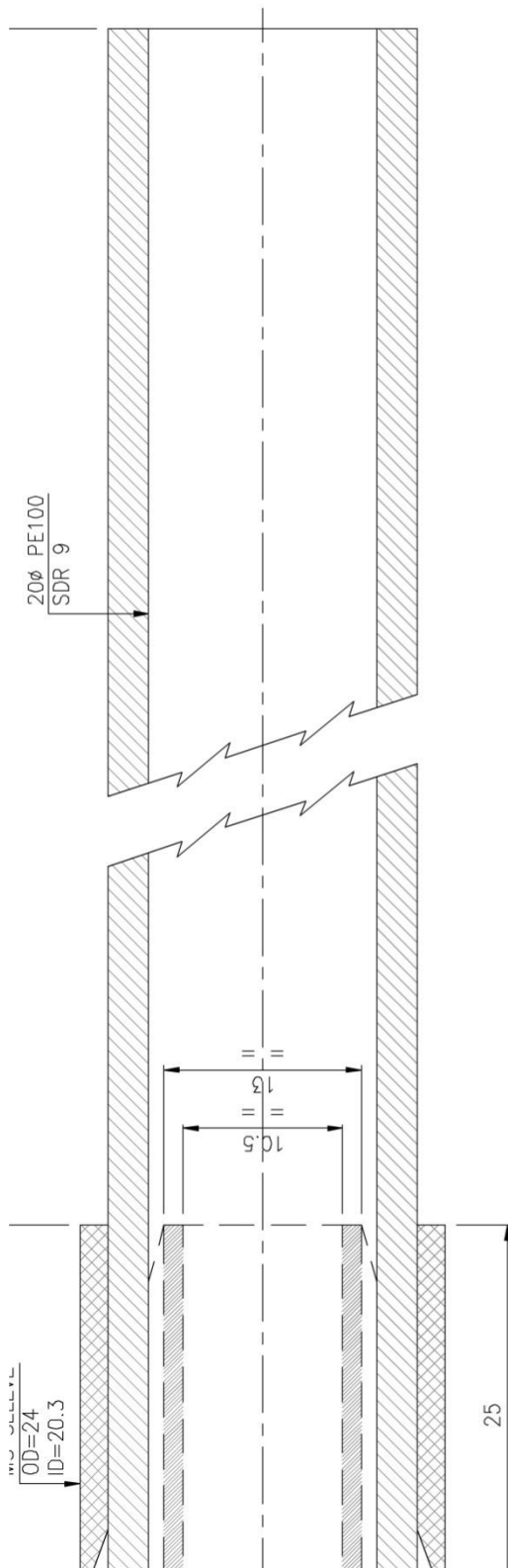




Vadodara Gas Limited

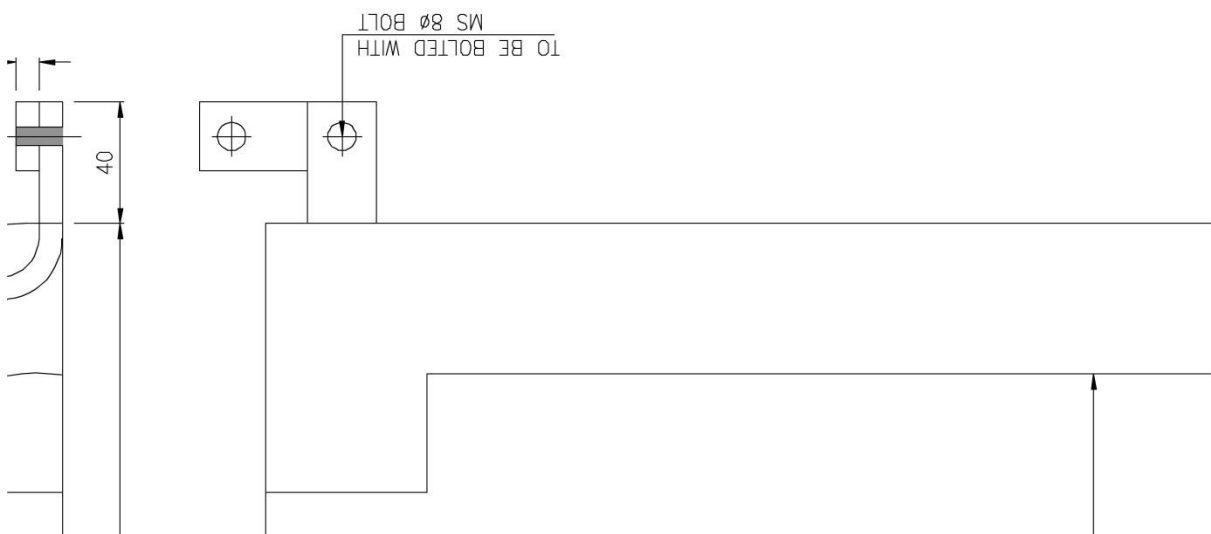
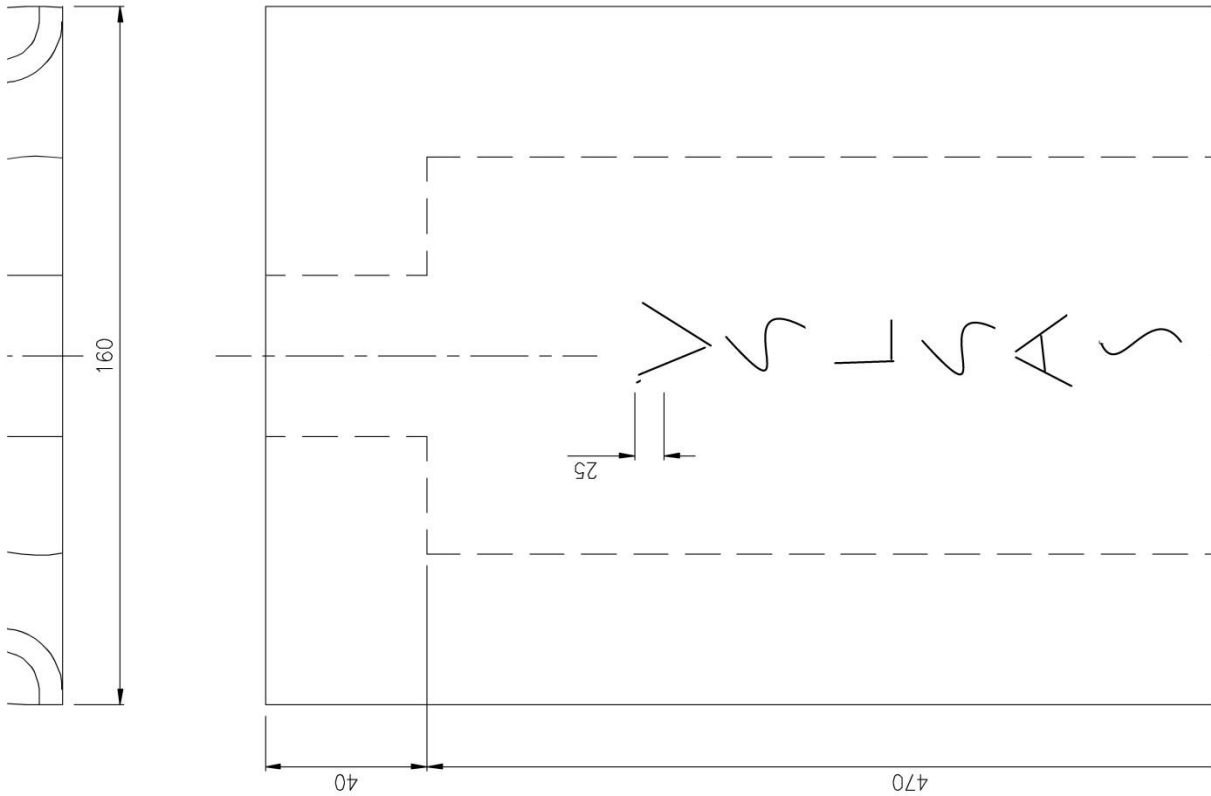
- OF 1977. ANY EXTRA COVER REQUIREMENT
WITH SPECIFICATIONS.
3 MIN. COVER REQUIREMENT SHALL BE SUBJECT
AUTHORITIES WHEREVER REQUIRED.
4 EXTRA COVER REQUIREMENT SHALL BE ESTA
AND HORIZONTAL BENDS WHEREVER NECESS
5 FOR MIN. COVER REQUIREMENT AT PIPELINE
TRACKS, RIVERS MARSHY AREAS ETC REFER





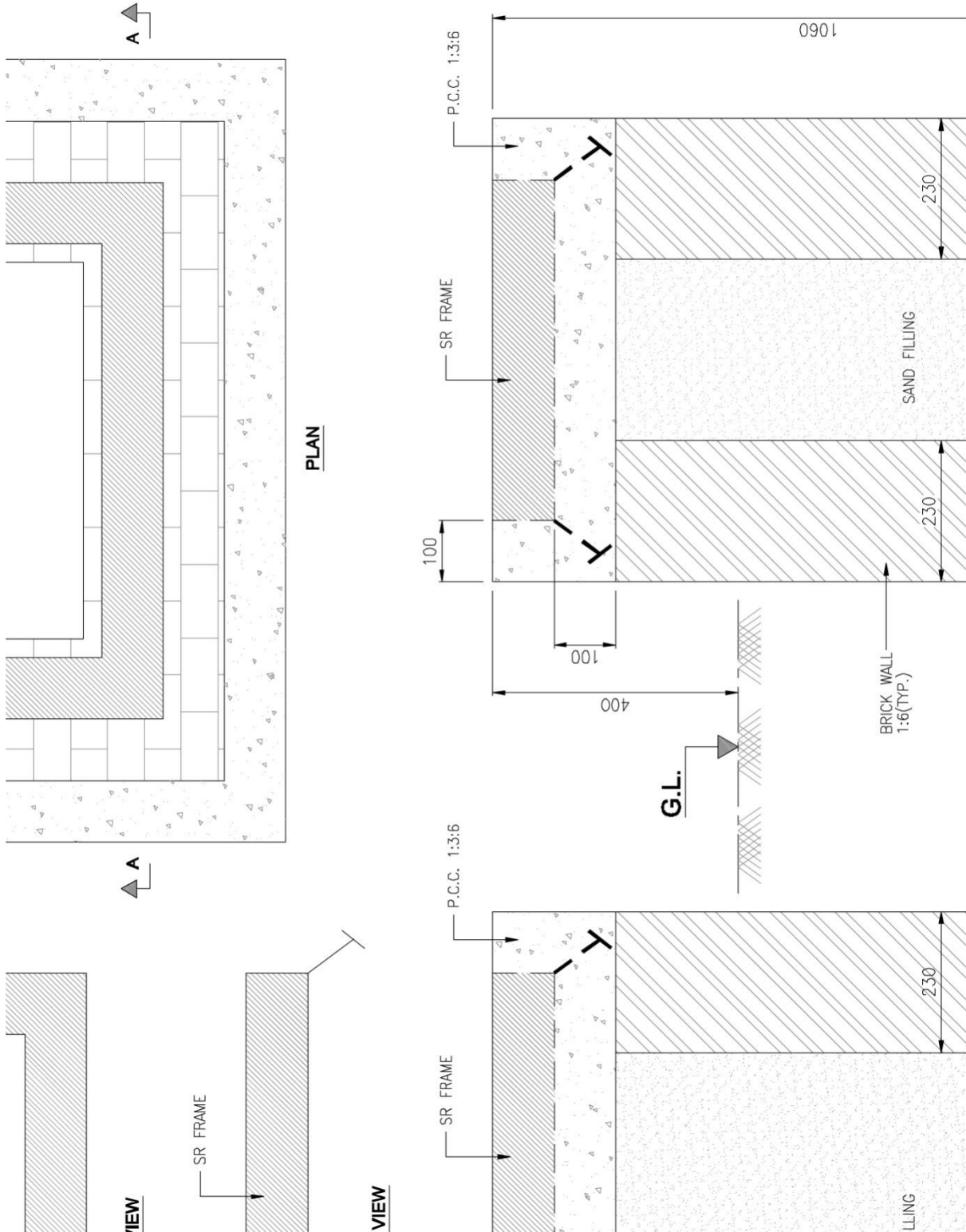


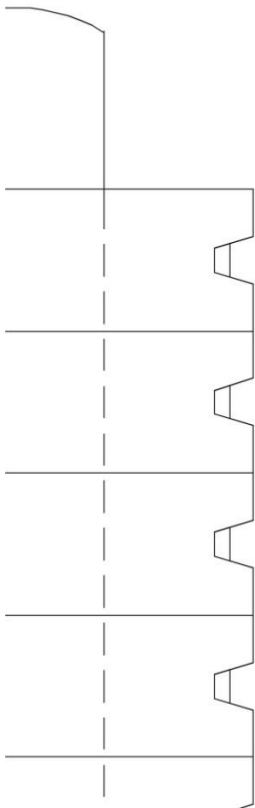
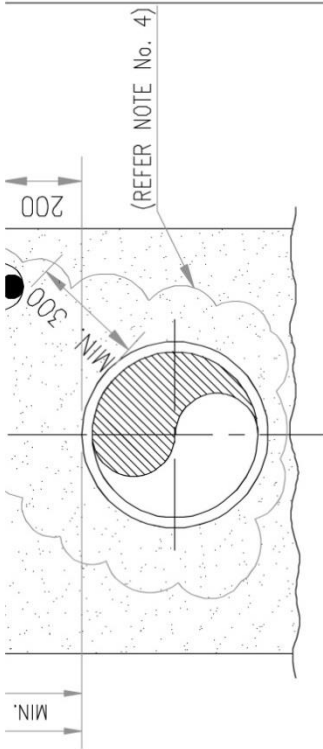
Vadodara Gas Limited



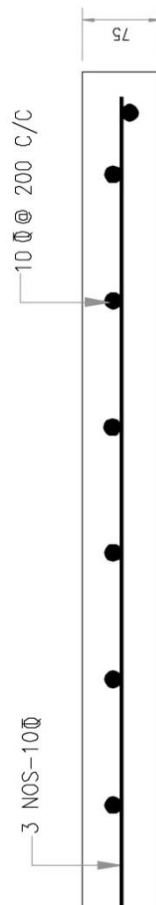


11/1/2016





ROTECTIVE CONCRETE SLAB PLAN



SECTION A-A
SCALE-1 : 10

