



रेल कोच फैक्ट्री, कपूरथला
RAIL COACH FACTORY, KAPURTHALA

दस्तावेज स.: शुद्धिपत्र-10
Document No.: Corrigendum-10

This Corrigendum is issued to specification for Wheel Set Earthing Device i.e. EDTS-101, Rev-C, Am-3, Corr-9, with Annexure-1 wherein the design of spring for Cover of WSEE have been modified and accordingly following clause has been changed:

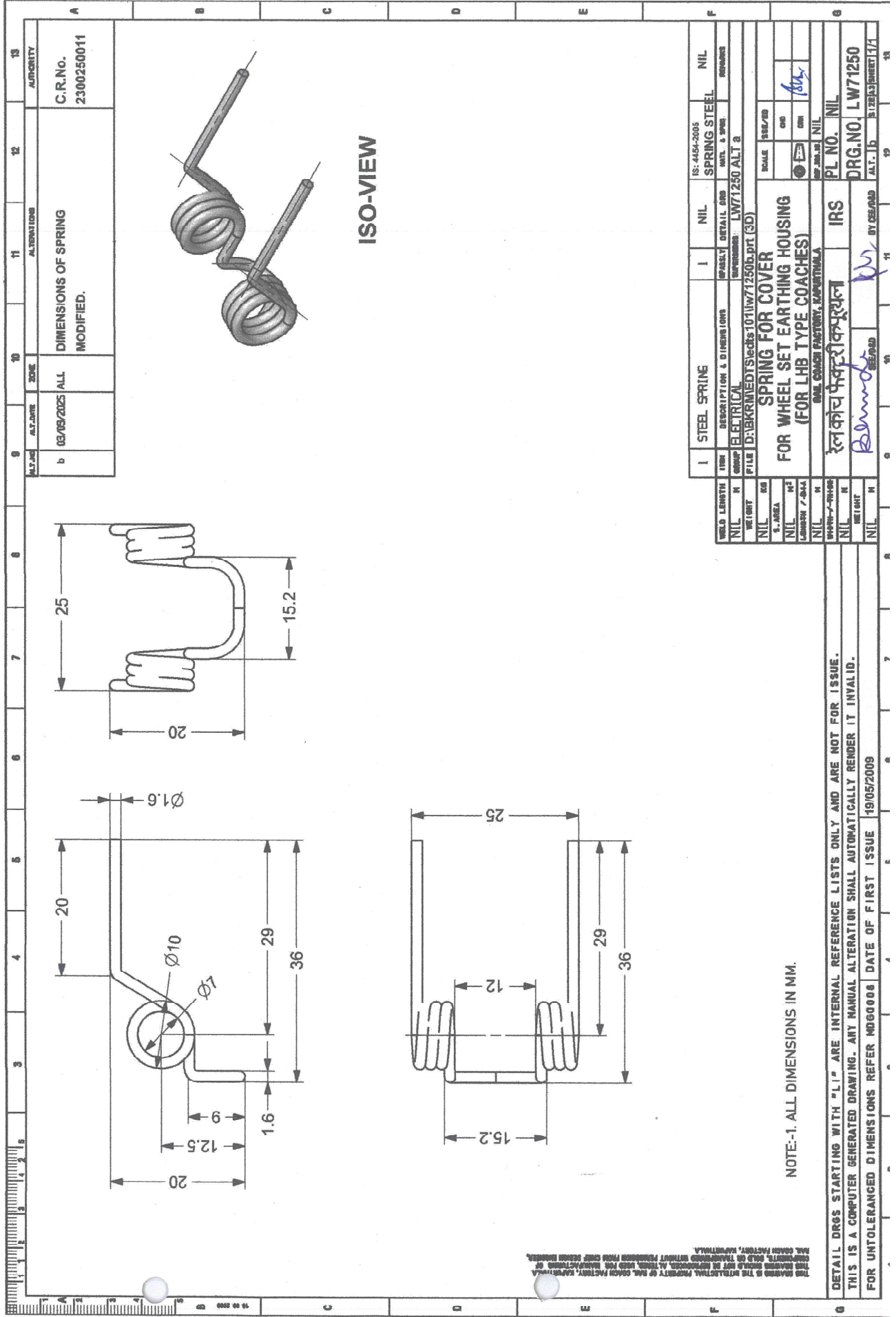
Clause 11.0:

Enclosuers: The drawing no. at S.No. is revised as follows:

S.No.	Existing drg. no.	Revised drg. no.
xxi	Drg. no. LW71250 alt.-'a'	Drg. no. LW71250 alt.-'b'

EDTS-101, Rev-C, Amnd.-3, Corr.-9 with Annexure-1	10	08.09.25				1 of 1
Document No.	Corr.	Date	SSE/CAD	SEE/D&D	Dy.CEE/D	Page

2



ISO-VIEW

NOTE-1. ALL DIMENSIONS IN MM.

DETAIL DRS STARTING WITH "LI" ARE INTERNAL REFERENCE LISTS ONLY AND ARE NOT FOR ISSUE.
THIS IS A COMPUTER GENERATED DRAWING. ANY MANUAL ALTERATION SHALL AUTOMATICALLY RENDER IT INVALID.
FOR UNTOLERANCED DIMENSIONS REFER MDG0008 DATE OF FIRST ISSUE 19/05/2009

ITEM	STEEL SPRING	I	NIL	IS: 4454-2005	SPRING STEEL	NIL
GROUP	ELECTRICAL	SPARELY	DETAIL	DRS	MATL. & SPEC.	REMARKS
FILE	D:\BKR\MEDTS\eds101lw71250b.dpt (3D)				LW71250 ALT 2	
SCALE					1:1	
DATE					19/05/2009	
PL NO.					NIL	
DRG. NO.					LW71250	
ALT. 16					BY 05/05/09	
BY 05/05/09						

ALT. DATE	ZONE	ALTERATIONS	AUTHORITY
b	03/05/2005	ALL	
		DIMENSIONS OF SPRING MODIFIED.	C.R.No. 2300250011