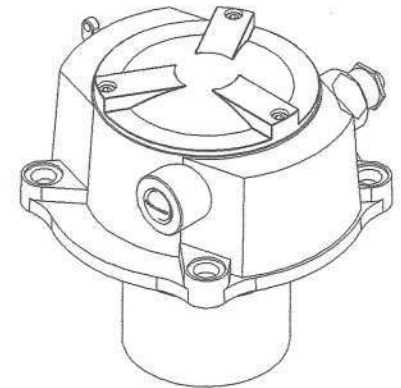


SECTION A-A
SCALE 1:1



ISO - VIEW

ALT.NO	ALT.DATE	ZONE	ALTERATIONS	AUTHORITY
1	21/09/2022	ALL	1. LENGTH OF ITEM-12 REVISED. 2. NOTE-7 ADDED.	CHANGE REQUEST NO. 2300220726

14	PLAIN WASHER Ø 9	3	IS: 2016-62	IS: 1367 STAINLESS STEEL	NIL
13	SPRING WASHER M8	3	NIL	IS: 3063-1994	TO BE SUPPLIED LOOSE
12	HEX.HD.SCREW ISO 4017 - M8X30	3	NIL	IS: 1364(Pt.2) 2002/10.9 CL	TO BE SUPPLIED LOOSE
11	SPRING WASHER M10	1	IS: 3063-92 TY-8	IS: 1367 STAINLESS STEEL	NIL
10	PLAIN WASHER Ø 11	1	IS: 2016-62	IS: 1367 STAINLESS STEEL	NIL
9	HEX.HD.SCREW M10X20	1	IS: 1364-94 P-1.4.8	IS: 1367 STAINLESS STEEL	#
8	PLAIN WASHER Ø 9	3	IS: 2016-62	IS: 1367 STAINLESS STEEL	NIL
7	HEX.HEAD NYLOC NUT M8	3	IS: 1364-94 P-3.4.8	IS: 1367 STAINLESS STEEL	#
6	CABLE GLAND (IP-68)	1	NIL	BRASS	+
5	STAINLESS STEEL BRAIDED EARTHING CABLE	1	LW71245	NIL	NIL
4	ISOLATING BUSH	6	LW71244	NIL	NIL
3	RING OILER ASSEMBLY	1	LW71241	NIL	ALT. - 'A'
2	BRUSH HOLDER ASSEMBLY	1	LW71237	NIL	NIL
1	HOUSING COMPLETE	1	LW71232	NIL	ALT. - 'C'

WELD LENGTH	WELD	DESCRIPTION & DIMENSIONS	SPALLS	DETAIL	DRG	MATL. & SPEC.	REMARKS
NIL	H	ELECTRICAL	SUPERSIDES:	NIL			
WEIGHT	KG	FILE	D:\Home\kajal\lw71231.prt				
3. AREA							
4. LENGTH/Ø/Ø2							
5. WIDTH/THICK.							
6. HEIGHT							
7. WEIGHT							
8. WEIGHT							

ARRANGEMENT OF
WHEEL SET EARTHING EQUIPMENT
(FOR LHB TYPE COACHES)

RAIL COACH FACTORY, KAPURTHALA

रेल कोच फैक्टरी कपूरथला

IRS

PL NO. NIL

DRG.NO. LW71231

SEE/DWG

DATE

BY

7. ITEM-12 SHALL BE AS PER DRG.NO. CG-15070, ALT-'1'.
6. ITEM-7 TO 13 TO BE PROCURED FROM ROZO APPROVED SOURCES.
- # 5. TO BE SEALED WITH THREAD LOCKING LOCKTITE AFTER ASSEMBLY.
- * 4. TYPE MRS-21 OF M/S LAPP OR EQUIVALENT OF M/S FMA.
3. THE ASSEMBLY SHALL BE POWDER COATED TO RAL7021 GREY (MUNSELL GREY OF M/S BERGER) 40 MICRONS AFTER REQUISITE SURFACE TREATMENT.
2. MANUFACTURER'S INSGNIA/SERIAL NO. SHALL BE PUNCHED/CASTED IN THE ASSEMBLY.

NOTE:- 1. ALL DIMENSIONS IN MM.

ANY MANUAL ALTERATION SHALL AUTOMATICALLY RENDER THIS DRAWING INVALID.

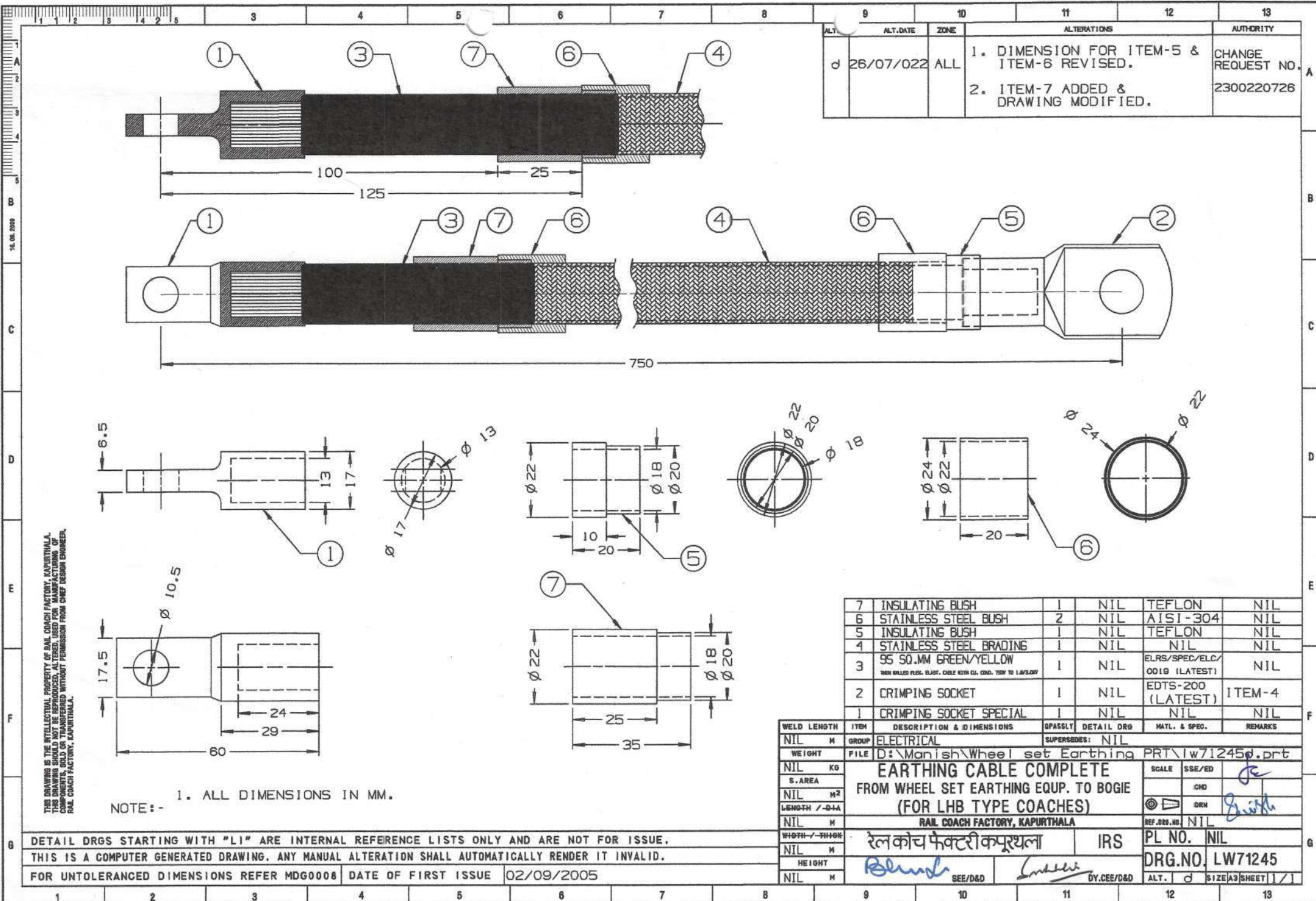
DETAIL DRGS STARTING WITH "LI" ARE INTERNAL REFERENCE LISTS ONLY AND ARE NOT FOR ISSUE.

FOR UNTOLERANCED DIMENSIONS REFER MDG0008

DATE OF FIRST ISSUE

27/09/2005

1 2 3 4 5 6 7 8 9 10 11 12 13 14 15 16 17 18 19



THIS DRAWING IS THE INTELLECTUAL PROPERTY OF RAIL COACH FACTORY, KAPURTHALA. THIS DRAWING SHOULD NOT BE REPRODUCED, ALTERED, USED FOR MANUFACTURING OF COMPONENTS, SOLD OR TRANSFERRED WITHOUT PERMISSION FROM CHIEF DESIGN ENGINEER, RAIL COACH FACTORY, KAPURTHALA.

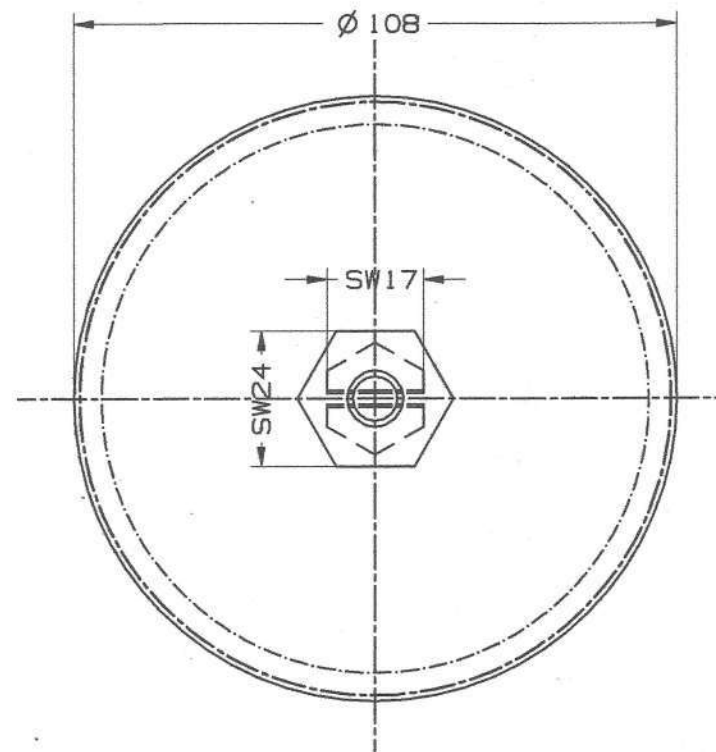
NOTE:- 1. ALL DIMENSIONS IN MM.

DETAIL DRGS STARTING WITH "LI" ARE INTERNAL REFERENCE LISTS ONLY AND ARE NOT FOR ISSUE.
THIS IS A COMPUTER GENERATED DRAWING. ANY MANUAL ALTERATION SHALL AUTOMATICALLY RENDER IT INVALID.
FOR UNTOLERANCED DIMENSIONS REFER MDG0008

DATE OF FIRST ISSUE 02/09/2005

7	INSULATING BUSH	1	NIL	TEFLON	NIL
6	STAINLESS STEEL BUSH	2	NIL	AISI-304	NIL
5	INSULATING BUSH	1	NIL	TEFLON	NIL
4	STAINLESS STEEL BRADING	1	NIL	NIL	NIL
3	95 SQ.MM GREEN/YELLOW 7000 GRADED RUB. BLAST. CABLE WITH OIL. COND. TON TO 1.0/5.0KV	1	NIL	ELRS/SPEC/ELC/ 0019 (LATEST)	NIL
2	CRIMPING SOCKET	1	NIL	EDTS-200 (LATEST)	ITEM-4
1	CRIMPING SOCKET SPECIAL	1	NIL	NIL	NIL

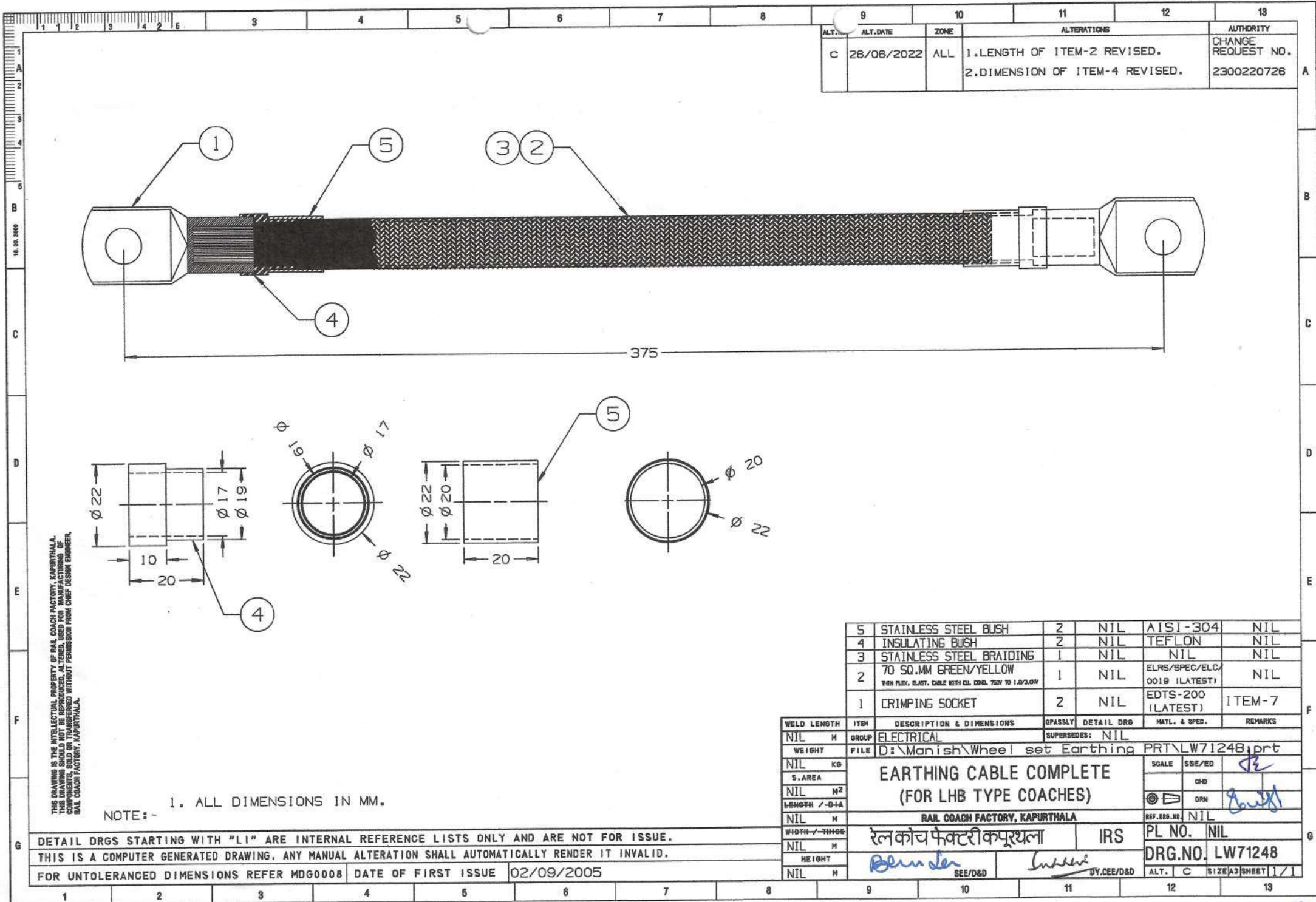
WELD LENGTH	ITEM	DESCRIPTION & DIMENSIONS		QPASSLY	DETAIL DRG	MATL. & SPEC.	REMARKS
NIL	M	GROUP	ELECTRICAL	SUPERSEDES: NIL			
WEIGHT	FILE	D:\Manish\Wheel set Earthing PRT\lw71245d.prt					
NIL	KG	EARTHING CABLE COMPLETE				SCALE	SSE/ED <i>JE</i>
S. AREA	FROM WHEEL SET EARTHING EQUP. TO BOGIE (FOR LHB TYPE COACHES)					CHD	
NIL						M ²	
LENGTH / DIA	RAIL COACH FACTORY, KAPURTHALA					DRN <i>Swish</i>	
NIL						M	
WIDTH / THICK	रेल कोच फैक्टरी कपूरथला				IRS	REF. DRG. NO.	NIL
NIL	M					PL NO.	NIL
HEIGHT	<i>Bhush</i>				<i>Indee</i>	DRG.NO.	LW71245
NIL	M	SEE/D&D		DY.CEE/D&D		ALT.	SIZE A3 SHEET 1/1

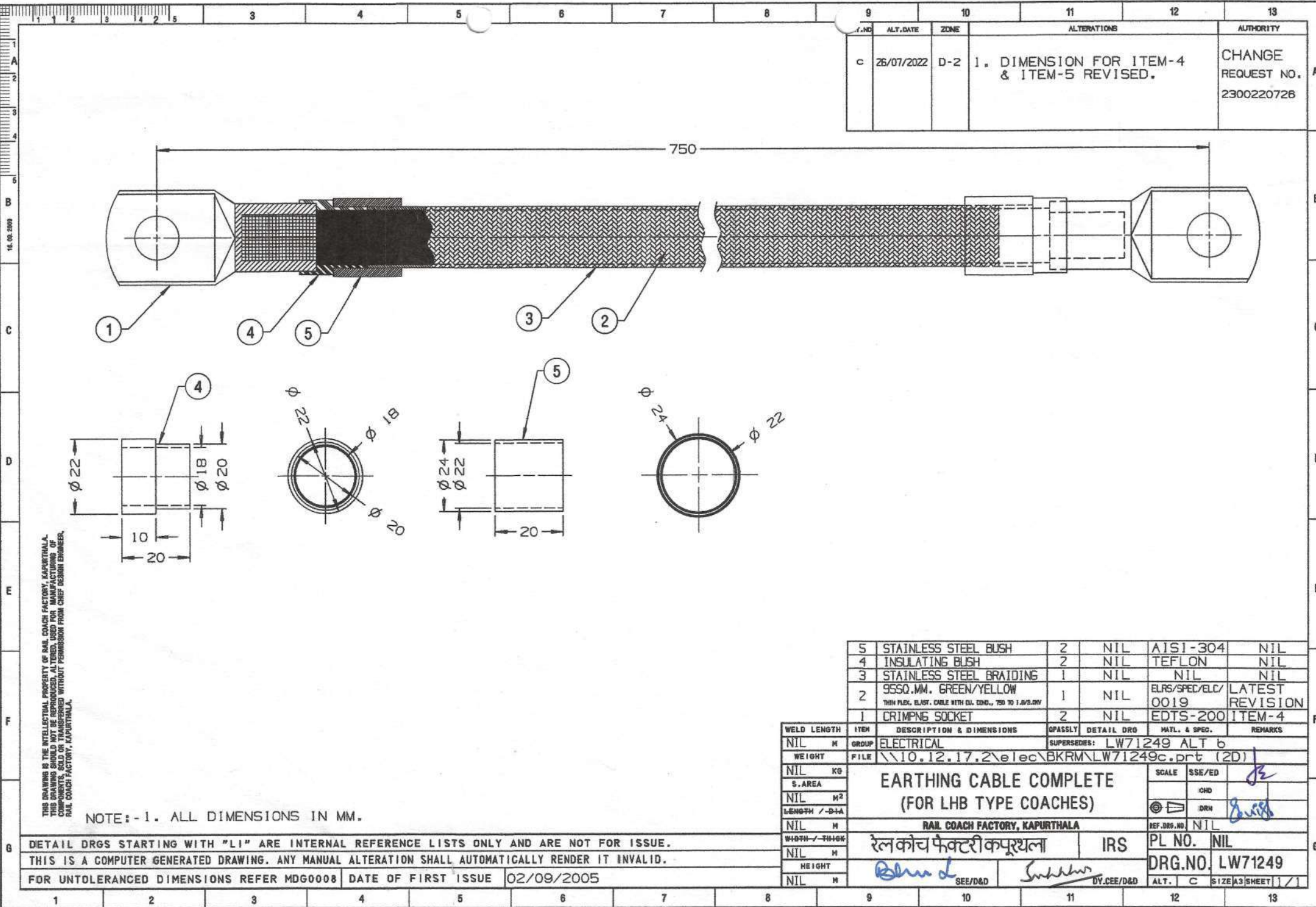
[illegible]

1	2	3	4	5	6	7	8	9	10	11	12	13	14	15	16	17	18	19	20	21	22	23	24	25	26	27	28	29	30	31	32	33	34	35	36	37	38	39	40	41	42	43	44	45	46	47	48	49	50	51	52	53	54	55	56	57	58	59	60	61	62	63	64	65	66	67	68	69	70	71	72	73	74	75	76	77	78	79	80	81	82	83	84	85	86	87	88	89	90	91	92	93	94	95	96	97	98	99	100	101	102	103	104	105	106	107	108	109	110	111	112	113	114	115	116	117	118	119	120	121	122	123	124	125	126	127	128	129	130	131	132	133	134	135	136	137	138	139	140	141	142	143	144	145	146	147	148	149	150	151	152	153	154	155	156	157	158	159	160	161	162	163	164	165	166	167	168	169	170	171	172	173	174	175	176	177	178	179	180	181	182	183	184	185	186	187	188	189	190	191	192	193	194	195	196	197	198	199	200	201	202	203	204	205	206	207	208	209	210	211	212	213	214	215	216	217	218	219	220	221	222	223	224	225	226	227	228	229	230	231	232	233	234	235	236	237	238	239	240	241	242	243	244	245	246	247	248	249	250	251	252	253	254	255	256	257	258	259	260	261	262	263	264	265	266	267	268	269	270	271	272	273	274	275	276	277	278	279	280	281	282	283	284	285	286	287	288	289	290	291	292	293	294	295	296	297	298	299	300	301	302	303	304	305	306	307	308	309	310	311	312	313	314	315	316	317	318	319	320	321	322	323	324	325	326	327	328	329	330	331	332	333	334	335	336	337	338	339	340	341	342	343	344	345	346	347	348	349	350	351	352	353	354	355	356	357	358	359	360	361	362	363	364	365	366	367	368	369	370	371	372	373	374	375	376	377	378	379	380	381	382	383	384	385	386	387	388	389	390	391	392	393	394	395	396	397	398	399	400	401	402	403	404	405	406	407	408	409	410	411	412	413	414	415	416	417	418	419	420	421	422	423	424	425	426	427	428	429	430	431	432	433	434	435	436	437	438	439	440	441	442	443	444	445	446	447	448	449	450	451	452	453	454	455	456	457	458	459	460	461	462	463	464	465	466
---	---	---	---	---	---	---	---	---	----	----	----	----	----	----	----	----	----	----	----	----	----	----	----	----	----	----	----	----	----	----	----	----	----	----	----	----	----	----	----	----	----	----	----	----	----	----	----	----	----	----	----	----	----	----	----	----	----	----	----	----	----	----	----	----	----	----	----	----	----	----	----	----	----	----	----	----	----	----	----	----	----	----	----	----	----	----	----	----	----	----	----	----	----	----	----	----	----	----	-----	-----	-----	-----	-----	-----	-----	-----	-----	-----	-----	-----	-----	-----	-----	-----	-----	-----	-----	-----	-----	-----	-----	-----	-----	-----	-----	-----	-----	-----	-----	-----	-----	-----	-----	-----	-----	-----	-----	-----	-----	-----	-----	-----	-----	-----	-----	-----	-----	-----	-----	-----	-----	-----	-----	-----	-----	-----	-----	-----	-----	-----	-----	-----	-----	-----	-----	-----	-----	-----	-----	-----	-----	-----	-----	-----	-----	-----	-----	-----	-----	-----	-----	-----	-----	-----	-----	-----	-----	-----	-----	-----	-----	-----	-----	-----	-----	-----	-----	-----	-----	-----	-----	-----	-----	-----	-----	-----	-----	-----	-----	-----	-----	-----	-----	-----	-----	-----	-----	-----	-----	-----	-----	-----	-----	-----	-----	-----	-----	-----	-----	-----	-----	-----	-----	-----	-----	-----	-----	-----	-----	-----	-----	-----	-----	-----	-----	-----	-----	-----	-----	-----	-----	-----	-----	-----	-----	-----	-----	-----	-----	-----	-----	-----	-----	-----	-----	-----	-----	-----	-----	-----	-----	-----	-----	-----	-----	-----	-----	-----	-----	-----	-----	-----	-----	-----	-----	-----	-----	-----	-----	-----	-----	-----	-----	-----	-----	-----	-----	-----	-----	-----	-----	-----	-----	-----	-----	-----	-----	-----	-----	-----	-----	-----	-----	-----	-----	-----	-----	-----	-----	-----	-----	-----	-----	-----	-----	-----	-----	-----	-----	-----	-----	-----	-----	-----	-----	-----	-----	-----	-----	-----	-----	-----	-----	-----	-----	-----	-----	-----	-----	-----	-----	-----	-----	-----	-----	-----	-----	-----	-----	-----	-----	-----	-----	-----	-----	-----	-----	-----	-----	-----	-----	-----	-----	-----	-----	-----	-----	-----	-----	-----	-----	-----	-----	-----	-----	-----	-----	-----	-----	-----	-----	-----	-----	-----	-----	-----	-----	-----	-----	-----	-----	-----	-----	-----	-----	-----	-----	-----	-----	-----	-----	-----	-----	-----	-----	-----	-----	-----	-----	-----	-----	-----	-----	-----	-----	-----	-----	-----	-----	-----	-----	-----	-----	-----	-----	-----	-----	-----	-----	-----	-----	-----	-----	-----	-----	-----	-----	-----	-----	-----	-----	-----	-----	-----	-----	-----	-----	-----	-----	-----	-----	-----	-----	-----	-----

NOTE:-	NIT
DETAIL DRGS STARTING WITH "LI" ARE INTERNAL REFERENCE LISTS ONLY AND ARE NOT FOR ISSUE.	WIDTH / T
THIS IS A COMPUTER GENERATED DRAWING. ANY MANUAL ALTERATION SHALL AUTOMATICALLY RENDER IT INVALID.	NIT
FOR UNTOLERANCED DIMENSIONS REFER MDG0008	HEIGHT
DATE OF FIRST ISSUE	NIT
30/08/2005	

1	2	3	4	5	6	7	8
---	---	---	---	---	---	---	---





THIS DRAWING IS THE INTELLECTUAL PROPERTY OF RAIL COACH FACTORY, KAPURTHALA. THIS DRAWING SHOULD NOT BE REPRODUCED, ALTERED, USED FOR MANUFACTURING OF COMPONENTS, SOLD OR TRANSFERRED WITHOUT PERMISSION FROM CHIEF DESIGN ENGINEER, RAIL COACH FACTORY, KAPURTHALA.

NOTE:-1. ALL DIMENSIONS IN MM.

DETAIL DRGS STARTING WITH "LI" ARE INTERNAL REFERENCE LISTS ONLY AND ARE NOT FOR ISSUE.

THIS IS A COMPUTER GENERATED DRAWING. ANY MANUAL ALTERATION SHALL AUTOMATICALLY RENDER IT INVALID.

FOR UNTOLERANCED DIMENSIONS REFER MDG0008 DATE OF FIRST ISSUE 02/09/2005

5	STAINLESS STEEL BUSH	2	NIL	AISI-304	NIL
4	INSULATING BUSH	2	NIL	TEFLON	NIL
3	STAINLESS STEEL BRAIDING	1	NIL	NIL	NIL
2	9550.MM. GREEN/YELLOW THIN FLEX. BUSH. CABLE WITH OIL COO., 750 TO 1.8/3.DRY	1	NIL	ELRS/SPEC/ELC/ 0019	LATEST REVISION
1	CRIMPING SOCKET	2	NIL	EDTS-200	ITEM-4

WELD LENGTH	ITEM	DESCRIPTION & DIMENSIONS	QPASSLY	DETAIL DRG	MATL. & SPEC.	REMARKS
NIL	M	GROUP	ELECTRICAL	SUPERSEDES:	LW71249 ALT b	
WEIGHT	FILE	\\10.12.17.2\elec\BKRMLW71249c.prt (2D)				
NIL	KG	EARTHING CABLE COMPLETE (FOR LHB TYPE COACHES)				
S. AREA		RAIL COACH FACTORY, KAPURTHALA				
NIL	M ²	REF. DRS. NO. NIL				
LENGTH / -D+A		PL NO. NIL				
NIL	M	DRG.NO. LW71249				
WIDTH / -THICK		SEE/D&D				
NIL	M	BY.CEE/D&D				
HEIGHT		ALT. C SIZE A3 SHEET 1/1				
NIL	M					


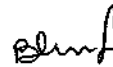
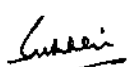
Corrigendum-8

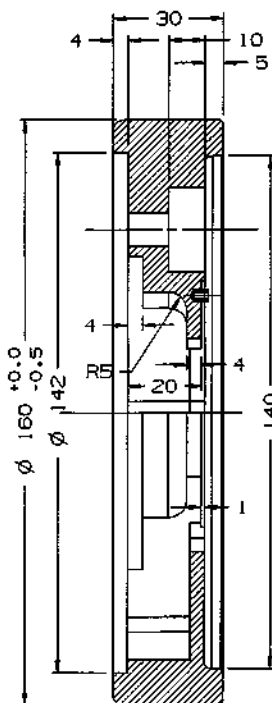
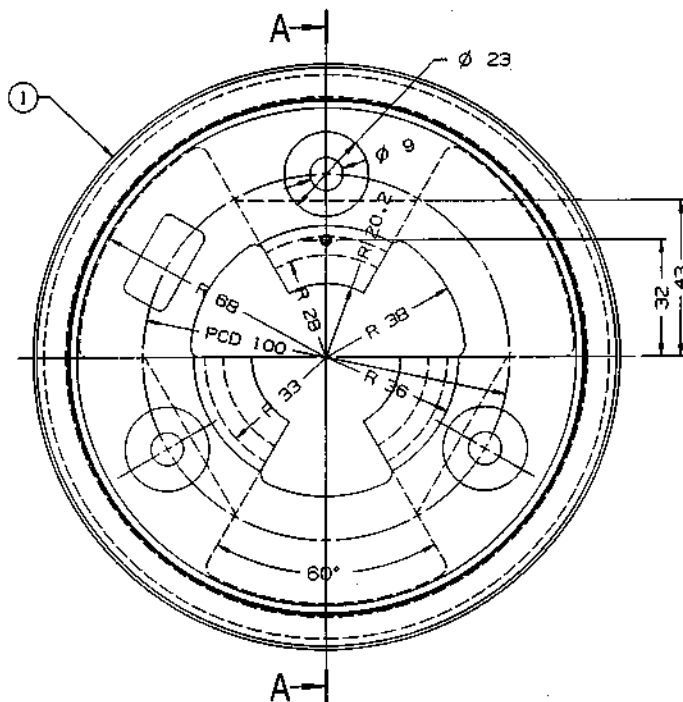
This corrigendum is issued to specification for Wheel Set Earthing Device i.e. EDTS101, Rev. C, Am-2, Corr-7 with Annexure-1 to modifications in the drawings of Ring Oiler for Wheel Set Earthing Equipment.

Clause 11.0:

Enclosures: The drawings at S.No.is given below are amended as follows:

S.No	Existing drg. no.	Revised drg. no.
xiii	Drawing no. LW71242 alt.-'b'	Drawing no. LW71242 alt.-'c'

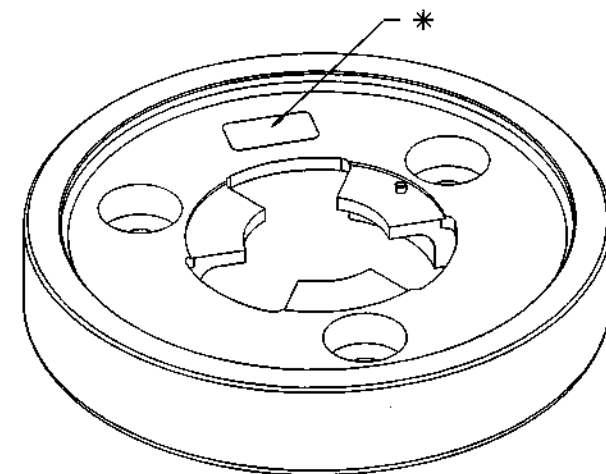
EDTS-101, Rev.-C, AM-1, Corr-7 with Annexure-1	8	11.08.2023				1 of 1
SPEC. NO.	CORR.	DATE	SSE/CAD	SEE/D&D	DY.CEE/D&D	PAGE



SECTION A-A
SCALE 3:4



9	10	11	12	13
ALT. NO.	ALT. DATE	ZONE	ALTERATIONS	AUTHORITY
c	08/08/2023	ALL	DIAMETER OF RING OILER CHANGES FROM 163 mm to 160 mm	CHANGE REQUEST NO. 2300230011



ISO-VIEW

THIS DRAWING IS THE INTELLECTUAL PROPERTY OF RAIL COACH FACTORY, KAPURTHALA. IT IS TO BE USED FOR MANUFACTURING OF COMPONENTS ONLY AND NOT FOR REPRODUCTION. ANY REPRODUCTION WITHOUT PERMISSION FROM RAIL COACH FACTORY, KAPURTHALA, IS PROHIBITED.

- * 2. MANUFACTURER'S INSIGNIA SHALL BE LEGIBLY ENGRAVED OR SCREEN PRINTED ON THE FRONT SURFACE OF THE RING OILER AS MARKED.
1. ALL DIMENSIONS IN MM.
- NOTE:-

DETAIL DRGS STARTING WITH "L1" ARE INTERNAL REFERENCE LISTS ONLY AND ARE NOT FOR ISSUE.

THIS IS A COMPUTER GENERATED DRAWING. ANY MANUAL ALTERATION SHALL AUTOMATICALLY RENDER IT INVALID.

FOR UNTOLERANCED DIMENSIONS REFER MDG0008 DATE OF FIRST ISSUE 28/01/2009

WELD LENGTH	ITEM	DESCRIPTION & DIMENSIONS	ASSEMBLY	DETAIL DRG	MATL. & SPEC.	REMARKS
NIL	M	ELECTRICAL			LW71242 ALT 6	
WEIGHT	FILE	\\VGHV				
NIL	KG					
S. AREA						
NIL	M ²					
LENGTH / DIA						
NIL	M					
WIDTH / THICK						
NIL	M					
HEIGHT						
NIL	M					

RING OILER
FOR WHEEL SET EARTHING EQUIPMENT
(FOR LHB TYPE COACHES)

RAIL COACH FACTORY, KAPURTHALA

रेलकोच फैक्टरी कपूरथला

IRS

PL NO. NIL
DRG NO. LW71242
ALT. C

SCALE: 1:1
SSE/GO: [Signature]
DR: [Signature]
PL NO. NIL
DRG NO. LW71242
ALT. C

1/1



रेल कोच फैक्ट्री, कपूरथला
RAIL COACH FACTORY, KAPURTHALA

दस्तावेज स.: संशोधन-3
Document No.: Amendment-3

This amendment has been issued for modification to be carried out in Wheel Set Earthing Equipment (WSEE) to spec. EDTS101 Rev-C, AMD.-2, Corr-8 for LHB EOG Coaches on the basis of feedback from User Railways. It covers modifications in front cover and brush holder assembly mounting arrangement by provision of SS inserts.

Accordingly to incorporate the above modifications the reference drawings as per undergiven details have been modified reefer in **Clause 11.0 ENCLOSURES :**

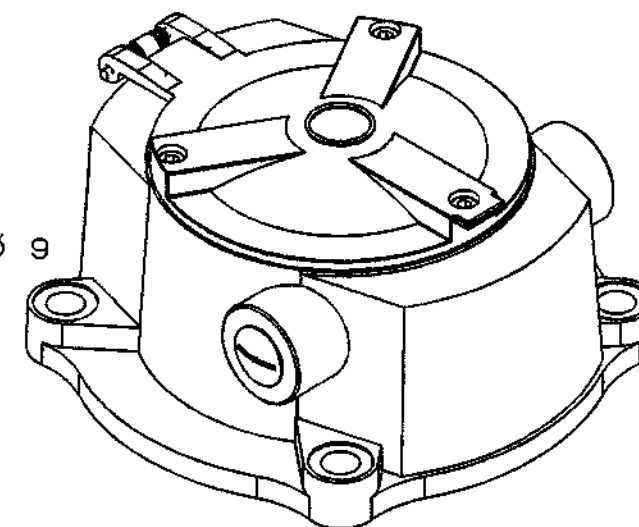
Clause 11.0 ENCLOSURES :

S.No.	Existing Drawing No.	Revised Drg. No.	Drg. Description
1	LW71232 alt. 'e'	LW71232 alt. 'f'	Housing Complete for Earthing Brush Assly.
2	LW71233 alt. 'c'	LW71233 alt. 'd'	Housing (for Earthing Brush Assly.)
3	LW71234 alt. 'c'	LW71234 alt. 'd'	Cover (for Wheel Set Earthing Equipment)
4	LW71254 alt. 'Nil'	LW71254 alt. 'a'	Cover Pin for Wheel Set Earthing Equipment (for LHB Type Coaches)

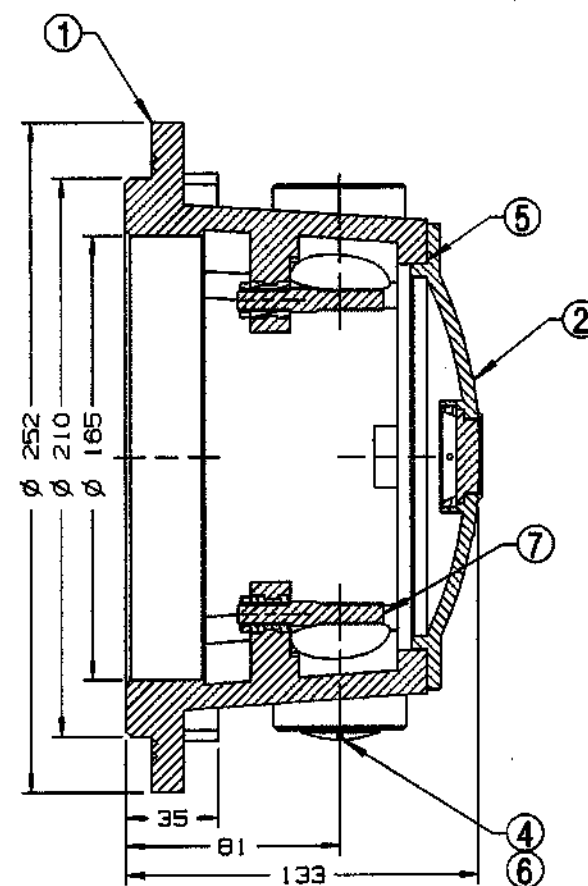
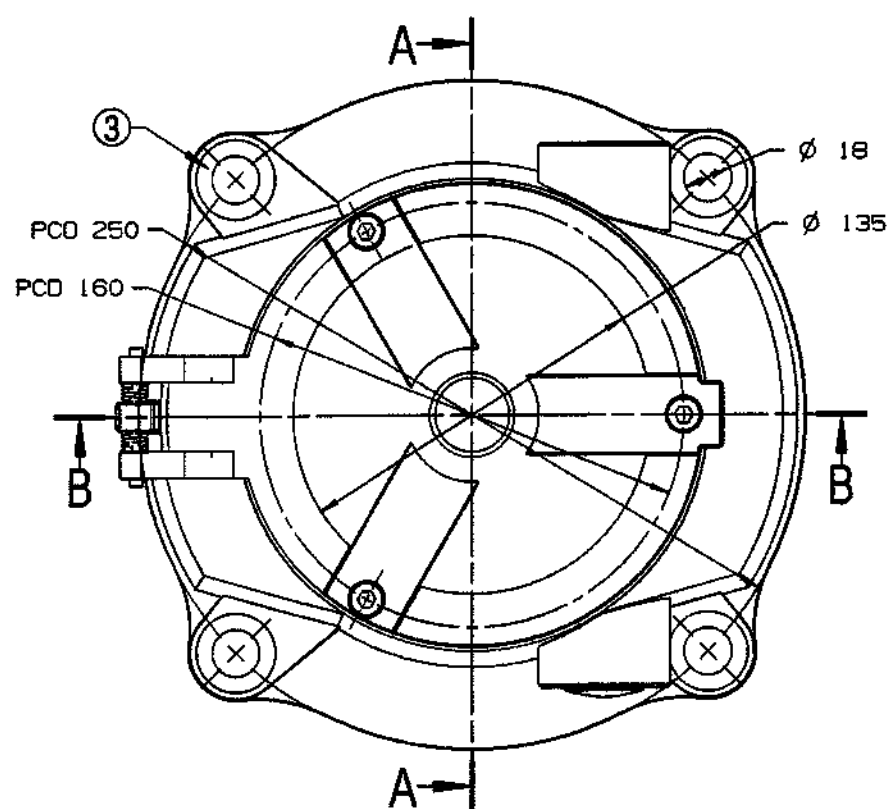
Following drawings has been altered.

- iii) Drawing no. LW71232 alt. 'f'
- iv) Drawing no. LW71233 alt. 'd'
- v) Drawing no. LW71234 alt. 'd'
- xxiii) Drawing no. LW71254 alt. 'a'

EDTS-101, Rev-C, Amnd.-2, Corr.-8 with Annexure-1	3	03.05.2024	<i>[Signature]</i>	<i>[Signature]</i>	<i>[Signature]</i>	1 of 1
दस्तावेज	संशोधन	दिनांक	वरिष्ठ अनुभाग अभियंता	वरिष्ठ विद्युत इंजीनियर/ अभिकल्प एवं विकास	उप मुख्य विद्युत इंजीनियर/ अभिकल्प एवं परियोजना	पृष्ठ स.
Document No.	Amnd.	Date	SSE/CAD	SEE/D&D	Dy.CEE/DP	Page



ALT.NO	ALT.DATE	ZONE	ALTERATIONS	AUTHORITY
F	03/05/2024	ALL ALL ALL	1. ITEM-1,2,7 & 12 MODIFIED. 2. ITEM-13 & 14 ADDED. 3. NOTE-3 MODIFIED.	C.R.NO. 2300240005



SECTION B-B

DETAIL X

ISO VIEW

14	HEX LOCK NUT M8	3	IS: 1364, P-4 ISO: 4035	STAINLESS STEEL	*
13	STUD M8X55	2	IS: 1568-75 TYPE - C	IS: 1367 STAINLESS STEEL	*
12	COVER PIN	1	LW71254	NIL	ALT. - 'A
11	COVER HINGE TUBE	1	LW71253	NIL	NIL
10	STEEL SPRING	1	LW71250	NIL	ALT. - 'A
9	SPRING WASHER M8, ELECTRO GALVANISED	3	IS: 3063-92 TYPE - B	NIL	NIL
8	HEXAGON SOCKET HEAD CAP SCREW M8X20, ELECTRO GALVANISED	3	IS: 2289--75 TABLE - 1	NIL	NIL
7	STUD M8X50	1	IS: 1568-75 TYPE - C	IS: 1367 STAINLESS STEEL	*
6	O-RING Ø 30X2	1	NIL	NEOPERENE RUBBER	60% NEOPRENE & 40% RUBBER
5	O-RING Ø 140X2	1	NIL	NEOPERENE RUBBER	60% NEOPRENE & 40% RUBBER
4	BLANKING PLUG	1	LW71236	NIL	*
3	STAINLESS STEEL BUSH	4	LW71235	NIL	ALT. - 'A
2	COVER	1	LW71234	NIL	ALT. - 'D
1	HOUSING	1	LW71233	NIL	ALT. - 'D

WELD LENGTH	ITEM	DESCRIPTION & DIMENSIONS	Q'ASSLY	DETAIL DRG	MATL. & SPEC.	REMARKS
NIL	M	ELECTRICAL	SUPERSEDES: LW71232 ALT e			
WEIGHT	FILE	D:\BKRM\EDTS\edts101\lw71232f.prt				
NIL	KG	HOUSING COMPLETE FOR EARTHING BRUSH ASSEMBLY (FOR LHB TYPE COACHES) RAIL COACH FACTORY, KAPURTHALA			SCALE	SSE/ED
S. AREA						CNO
NIL	M ²					
LENGTH / DIA					DRN	BKRM
NIL	M				REF. DRG. NO.	NIL
WIDTH / THICK		रेल कौच फैक्टरी कपूरथला		IRS	PL NO.	NIL
NIL	M				DRG. NO.	LW71232
HEIGHT		SEE D&D		SNK	ALT. F	SIZE A3 SHEET 1/1
NIL	M			DIY.CEE/DP		

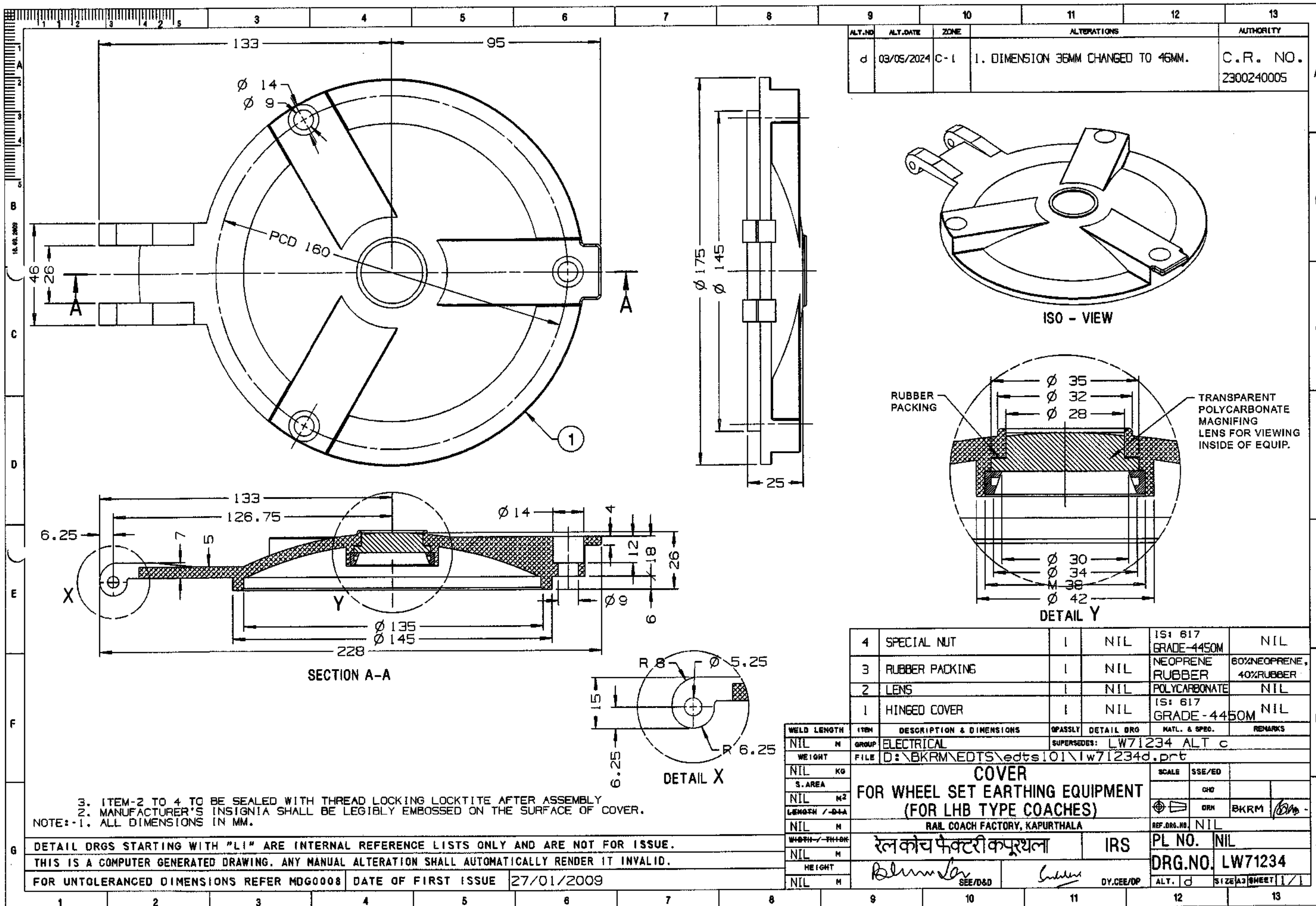
3. ITEM-3 STAINLESS STEEL BUSH TO BE PRESS FITTED IN ITEM-1.
* 2. TO BE SEALED WITH THREAD LOCKING LOCKTITE (RED271 OF M/S 3M) AFTER ASSEMBLY.
1. ALL DIMENSIONS IN MM.

NOTE:-

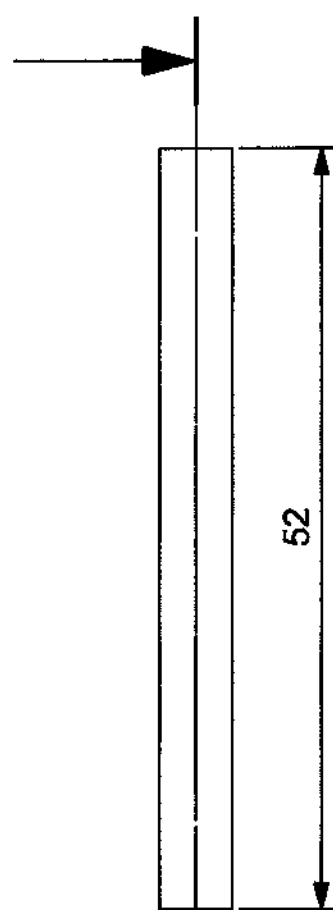
DETAIL DRGS STARTING WITH "LI" ARE INTERNAL REFERENCE LISTS ONLY AND ARE NOT FOR ISSUE.

THIS IS A COMPUTER GENERATED DRAWING. ANY MANUAL ALTERATION SHALL AUTOMATICALLY RENDER IT INVALID.

FOR UNTOLERANCED DIMENSIONS REFER MDG0008	DATE OF FIRST ISSUE	27/01/2009
---	---------------------	------------

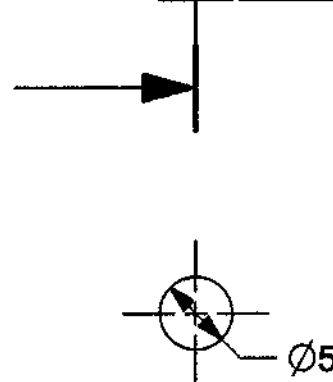


A

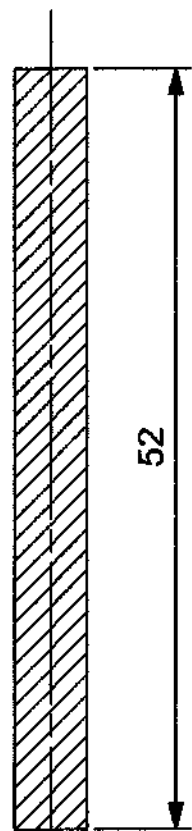


52

A

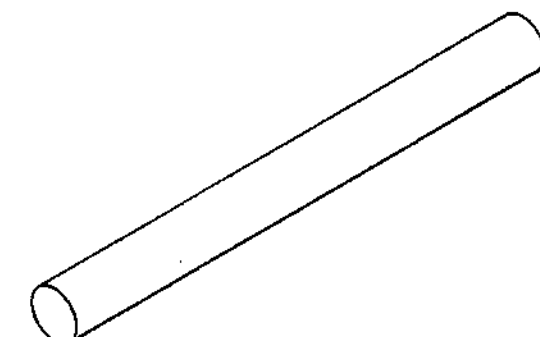


Ø5



52

SECTION A-A



ISO-VIEW

ALT.NO	ALT.DATE	ZONE	ALTERATIONS	AUTHORITY
a	03/05/2024	ALL	1. LENGTH INCREASED FROM 42 TO 52MM.	C.R.NO. 2300240005

THIS DRAWING IS THE INTELLECTUAL PROPERTY OF RAIL COACH FACTORY, KAPURTHALA. THIS DRAWING SHOULD NOT BE REPRODUCED, ALTERED, USED FOR MANUFACTURING OF COMPONENTS, SOLD OR TRANSFERRED WITHOUT PERMISSION FROM CHIEF DESIGN ENGINEER, RAIL COACH FACTORY, KAPURTHALA.

NOTE:- 1. ALL DIMENSIONS IN MM.

DETAIL DRGS STARTING WITH "LI" ARE INTERNAL REFERENCE LISTS ONLY AND ARE NOT FOR ISSUE.
THIS IS A COMPUTER GENERATED DRAWING. ANY MANUAL ALTERATION SHALL AUTOMATICALLY RENDER IT INVALID.
FOR UNTOLERANCED DIMENSIONS REFER MDG0008 DATE OF FIRST ISSUE 29/01/2009

NIL	PIN Ø 5X52	NIL	NIL	IS:2062-64 42WC	NIL
WELD LENGTH	ITEM	DESCRIPTION & DIMENSIONS	GROUP	DETAIL DRG	REMARKS
NIL	M	ELECTRICAL	FILE	D:\BKRME\EDTS\edts101\lw71254a.prt	
WEIGHT	GROUP	COVER PIN	SCALE	SSB/ED	
NIL	KG	FOR WHEEL SET EARTHING EQUIPMENT	CHD		
S. AREA	M2	(FOR LHB TYPE COACHES)	DRN	BKRM	
NIL	M	RAIL COACH FACTORY, KAPURTHALA	REF.DWG.NO.	NIL	
LENGTH / DIA	M	रेलकोच फैक्टरी कपूरथला	PL NO.	NIL	
NIL	M	IRS	DRG.NO	LW71254	
WIDTH / THICK	M	SEE/D&D	ALT.	a	SIZE A7 SHEET 1/1
NIL	M	DIY.CEE/DP			



रेल कोच फैक्ट्री, कपूरथला
RAIL COACH FACTORY, KAPURTHALA

दस्तावेज स.: शुद्धिपत्र-9
Document No.: Corrigendum-9

This Corrigendum is issued to specification for Wheel Set Earthing Device i.e. EDTS-101, Rev-C, Am-3, Corr-8, with Annexure-1 to correct the dimension of Ring Oiler for Wheel Set Earthing Equipment.

Following clause has been changed:

Clause 11.0:

Enclosuers: The drawing no. at S.No. is revised as follows:

S.No.	Existing drg. no.	Revised drg. no.
xiii	Drg. no. LW71242 alt.-'c'	Drg. no. LW71242 alt.-'d'

EDTS-101, Rev-C, Amnd.-3, Corr.-8 with Annexure-1	9	03.03.2025				1 of 1
दस्तावेज	शुद्धिपत्र	दिनांक	वरिष्ठ अनुभाग अभियंता	वरिष्ठ विद्युत इंजीनियर/ विक्रेता विकास	उप मुख्य विद्युत इंजीनियर/ अभिकल्प एवं परियोजना	पृष्ठ स.
Document No.	Corr.	Date	SSE/CAD	SEE/D&D	Dy.CEE/DP	Page



रेल कोच फैक्ट्री, कपूरथला
RAIL COACH FACTORY, KAPURTHALA

दस्तावेज स.: शुद्धिपत्र-10
Document No.: Corrigendum-10

This Corrigendum is issued to specification for Wheel Set Earthing Device i.e. EDTS-101, Rev-C, Am-3, Corr-9, with Annexure-1 wherein the design of spring for Cover of WSEE have been modified and accordingly following clause has been changed:

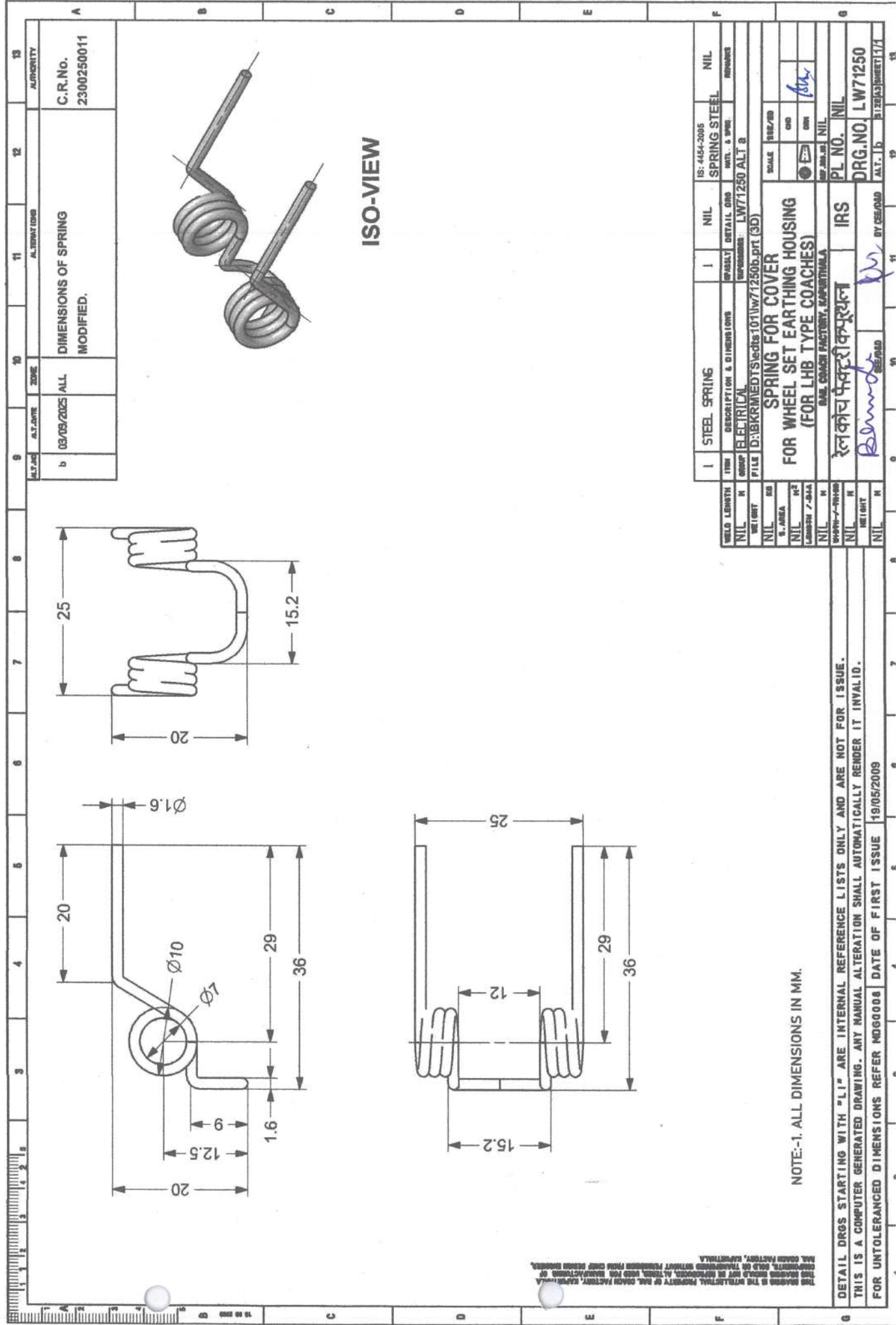
Clause 11.0:

Enclosuers: The drawing no. at S.No. is revised as follows:

S.No.	Existing drg. no.	Revised drg. no.
xxi	Drg. no. LW71250 alt.-'a'	Drg. no. LW71250 alt.-'b'

EDTS-101, Rev-C, Amnd.-3, Corr.-9 with Annexure-1	10	08.09.25				1 of 1
Document No.	Corr.	Date	SSE/CAD	SEE/D&D	Dy.CEE/D	Page

2



ALT. NO.	ALT. DATE	ZONE	ALTERNATIONS	AUTHORITY
b	03/09/2005	ALL	DIMENSIONS OF SPRING MODIFIED.	C.R.No. 2300250011

ISO-VIEW

NOTE:-1. ALL DIMENSIONS IN MM.

ITEM	DESCRIPTION & DIMENSIONS	I	NIL	IS: 4454-2005	SPRING STEEL	NIL
1	STEEL SPRING					
ITEM	DESCRIPTION & DIMENSIONS	DETAIL	QMS	MAT. & SPEC.	REMARKS	
GROUP	ELECTRICAL					
FILE	D:\BKR\MEDTS\edts\101lw71250b.pt (3D)					
SCALE						
UNIT						
DATE						
BY						
CHECKED						
APPROVED						
PL NO.						
DRG. NO.						
ALT. 15						

DETAIL DRGS STARTING WITH "LI" ARE INTERNAL REFERENCE LISTS ONLY AND ARE NOT FOR ISSUE.
THIS IS A COMPUTER GENERATED DRAWING. ANY MANUAL ALTERATION SHALL AUTOMATICALLY RENDER IT INVALID.
FOR UNTOLERANCED DIMENSIONS REFER MDG0008 DATE OF FIRST ISSUE 19/05/2009