

### Corrigendum-3 to Specification no.EDTS101, Rev. C,Am-1, Corr-1 & 2

This corrigendum is issued to specification for Wheel Set Earthing Device i.e. EDTS101, Rev. C, Am-1, Corr-1 & 2 to incorporate the RDSO drg. of Hex. head screw for earthing device.

The following modification/changes have mentioned below:-

1. Approved sources for Item-12 of the drg.no.LW71231, Alt-'e' given in AM-1 may be treated as deleted.
2. Corrigendum -2 withdrawn.
3. Drg.no. CG-15070, Alt-'nil' is applicable for Item-12 of the drg.no.LW71231, Alt-'e'

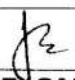
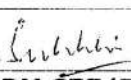
EDTS-101 REV.-'c' AM-1,Corr-1&2	3	26-08-2015	<i>[Signature]</i>	<i>[Signature]</i>	<i>[Signature]</i>	1 of 1
SPEC. NO.	CORR.	DATE	SSE/CAD	SEE/D	DY.CEE/D&D	PAGE

**Corrigendum no.-4 to Spec.no.EDTS101, Rev-'c', Am-1, Corr-1, 2 & 3**

This corrigendum is issued to specification no. EDTS101, Rev-'c', Am-1, Corr-1, 2 & 3 of Wheel set earthing equipment.

The following modification/changes has mentioned below:-

1. Drg.no.LW71232,Alt-'d' is altered to Drg.no.LW71232,Alt-'e'

EDTS-101,Rev-'c', Am-1,Corr-1,2 & 3,	4	19/05/2017				1 of 1
<b>Spec.no.</b>	<b>Corr.</b>	<b>Date</b>	<b>SSE/CAD</b>	<b>SEE/D</b>	<b>DY.CEE/D&amp;D</b>	<b>Sheet</b>

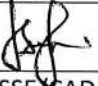
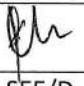

5

## Corrigendum-5

This corrigendum is issued to specification no. EDTS101, Rev. C, Am-1, Corr-1, 2, 3 & 4 of Wheel Set Earthing equipment and the following changes have been incorporated in the drg.no.LW71232, Alt-'e'.

1. The following drawing numbers of Item.no.10 & 12 to drg.no.LW71232,Alt-'e' may be read as :-

Item.no	Description	Existing drg. no.	Revised drg. no.
10	Steel spring	LW71250, Alt.'Nil'	LW71250, Alt.'a'
12	Cover Pin	LW71254, Alt.'a'	LW71254, Alt.'Nil'




EDTS101,Rev.-'C', AM-1,Corr-1,2,3 & 4	5	24/04/18				1 of 1
SPEC. NO.	CORR.	DATE	SSE/CAD	SEE/D	DY.CEE/D&D	PAGE

## Corrigendum-6

This corrigendum is issued to specification no. EDTS101, Rev. C, Am-1, Corr-1, 2, 3, 4 & 5 of Wheel Set Earthing equipment regarding governing specifications for testing of material composition of the items to drg.no.LW71238, Alt-'nil' & LW71242, Alt-'a'.

1. The following governing specification may be used for testing:-

Item.no	Drawing no.	Grade	Governing Spec.
Brush holder Assembly	LW71238, Alt.'Nil'	CuZn37pb	DIN-17656 (for Chemical composition)
Ring Oiler	LW71242, Alt.'a'	GGG40	IS:1608 (for mechanical properties)

EDTS101,Rev.-'C', AM-1,Corr-1,2,3,4 & 5	6	04/06/18				1 of 1
SPEC. NO.	CORR.	DATE	SSE/CAD	SEE/D	DY.CEE/D&D	PAGE

**Annexure-1 to RCF Specification no. EDTS-101, Rev-C, Am-1, Corr-6**

This annexure is issued to specification no. EDTS-101, Rev-C, Am-1, Corr-6 in order to incorporate IRIS conditions in the specifications. The Following clauses are added:-

**A. First Article/Prototype Inspection:-**

1. First Article inspection (FAI) will be done in case of first time manufacture and approved by CEDE/RCF before bulk supplies.
2. External Provider shall carryout FAI at their premises as per ISO/TS 22163:2017 requirements and submits the report along with the documents to RCF, Kapurthala prior to FAI by the purchaser. The following documents shall be submitted:-
  - i) FAI report
  - ii) QAP (Quality Assurance Plan)
  - iii) Details of special processes and their compliance.
3. Special Processes are as under:-
  - i) Casting and Surface treatment
  - ii) Powder Coating
  - iii) Crimping
4. On completion of First Article Inspection in-house by the firm and submission of documents to RCF, the representative of the purchaser shall be nominated to carry out FAI along with the validation of the above special processes at firm's premises.
5. Validation of outsourced special processes shall also be carried out as per requirement of the ISO/TS 22163:2017.
6. Audit inspection shall be done during regular production in the firm for certify quality of Wheel Set Earthing equipment.
7. Firm has to fulfil all the requirements as mentioned in the IRIS standard ISO/TS 22163:2017.

**B. RAMS (Reliability, Availability, Maintainability and Safety):-****1. Reliability targets:-**



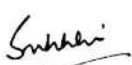
The achieved level of reliability shall ensure MDBF of 2,00,000 kms or more after initial reliability growth period of one years. The following fleet average levels of MDBF shall be achieved after the mentioned period of time:

- MDBF > 80,000 kms after 06 months.
- MDBF > 2,00,000 kms after 12 months.

For this purpose, any equipment shall be counted as available for calculations only after a stabilization period of 6 months after putting the train into revenue service.

**2. Availability Requirements:-**

The availability of the coach calculated on quarterly basis and considering unscheduled repairs for the equipment should not be less than 96%.




EDTS-101, Rev-C, Am-1, Corr-6	1	04.02.2020				1 of 2
Specification No.	Annexure	Date	SSE/CAD	SEE/D	Dy.CEE/D&D	Page No.

**3. Maintainability:**

The maintenance program prepared by EPPPS shall have the following objectives:-

- a) Enhancement of Rolling stock availability
- b) Minimisation of maintenance costs
- c) Minimisation of coach downtime/MTTR (meantime to restore serviceability)

EPPPS shall submit the basic maintenance schedules for the equipment. The minimum interval between overhauls at workshop be as per the maintenance manual/Schedule for LHB coaches issued by CAMTECH.

EDTS-101, Rev-C, Am-1, Corr-6	1	04.02.2020				2 of 2
Specification No.	Annexure	Date	SSE/CAD	SEE/D	Dy.CEE/D&D	Page No.

**Amendment-2 to Spec. no. EDTS-101, Rev.-C, Am-1, Corr-6 with Annexure-1**

This amendment is issued to:

- Change the requirement of manufacturer's insignia in Ring Oiler.
- Material of spring steel for Coiled spring of Clip Assembly.
- Requirement of Heli-Coil thread inserts in Housing for Earthing Brush Assembly.
- Change the specification for Earthing Cables.
- Weight of Earthing Resistor i.e. 1.3Kg is specified as maximum.
- To introduce the Endurance test and Shock/Vibration test.

Following drawings has been modified accordingly.

**Clause 11.0 ENCLOSURES:**


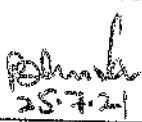
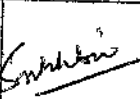
- iv) LW71233 alt. 'c'
- xi) LW71240 alt. 'a'
- xlii) LW71242 alt. 'b'
- xvi) LW71245 alt. 'c'
- xvii) LW71246 alt. 'b'
- xix) LW71248 alt. 'b'
- xx) LW71249 alt. 'b'

**Tests added in clause 8.4 i.e. Test description:**

Sr. No.	Test Description	Clause no. of spec.	Type test	Acceptance Test	Routine test
10.	Endurance test	8.5.6	√	X	X
11.	Shock & Vibration test	8.5.7	√	X	X

**Clause 8.5.6 & 8.5.7 added in clause 8.5 i.e. Method of Tests:****Clause 8.5.6 Endurance test:**

Endurance test of the complete unit shall be got tested by the firm either in-house or from Govt./NABL accredited laboratory. The Complete assembly shall be mounted on the setup similar to the actual operating condition. The slip assembly shall be rotated at a speed of 900-1000 rpm for 48 hours continuously. After the completion of test, unit shall be checked visually for any sign of wear and tear. There shall be no defect in any part of the unit.

EDTS-101, Rev-C, Amnd-1, Corr-6, With Annexure-1	2	19.07.2021		 25.7.21		1 of 2
Spec. No.	Amnd.	Date	SSE/CAD	SEE/D&D	Dy. CEE/D&D	Page

**Clause 8.5.7 Shock & Vibration test:**

Test for withstanding shock & vibration of the complete unit shall be conducted by the firm from Govt./NABL accredited laboratory as per Category-3 of IEC 61373 for simulate long-life testing at increased random vibration levels (Cl.-9 of IEC 61373) and shock testing (Cl.-10 of IEC 61373).


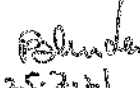
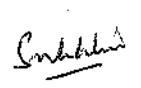
The test is passed if

- a) There is no breakage or other deteriorations.
- b) Individual components should not be displaced from their original position after the test.

After Shock & Vibration test following tests shall be conducted on the complete unit.

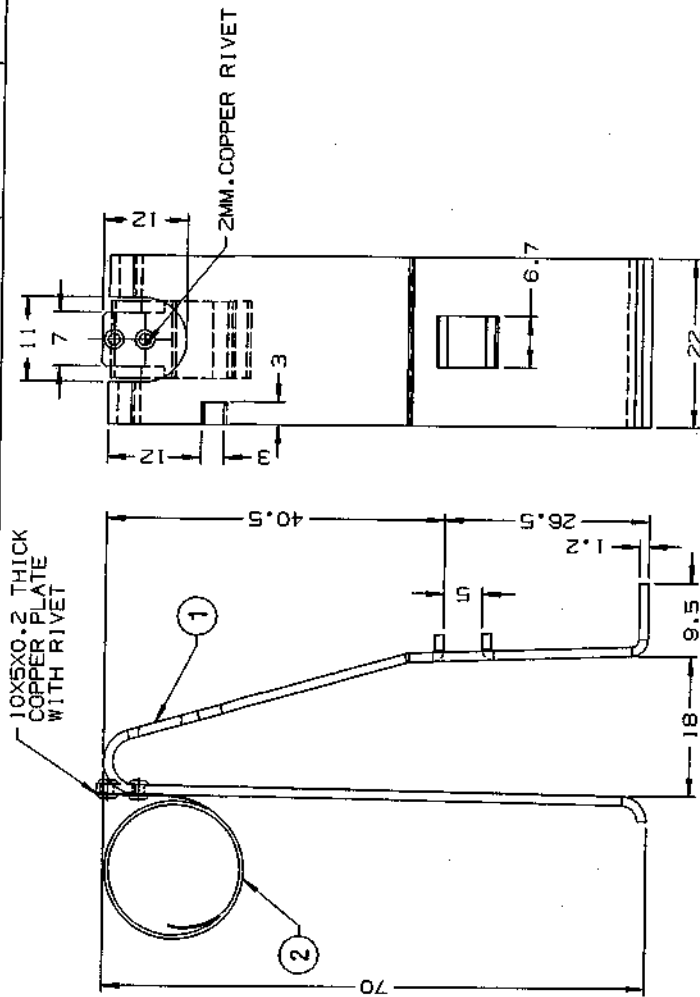
- Insulation resistance test (as per clause-8.5.3).
- High voltage test (as per clause-8.5.4).
- Degree of protection test (as per clause-8.5.5).

The test reports shall be submitted at the time of First Article Inspection (FAI).

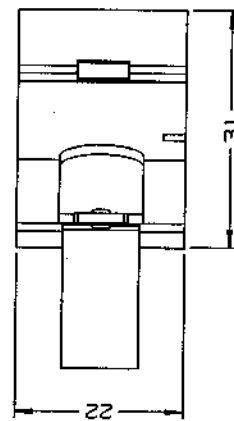
EDTS-101, Rev-C, Amnd-1, Corr-6, With Annexure-1	2	19.07.2021		 25.7.21		2 of 2
Spec. No.	Amnd.	Date	SSE/CAD	SEE/D&D	Dy. CEE/D&D	Page







DETAIL OF COIL:-  
1.NO.OF COIL = 8.5 STEP  
2.Plate THICKNESS = 0.2MM  
3.O.D. = 18MM



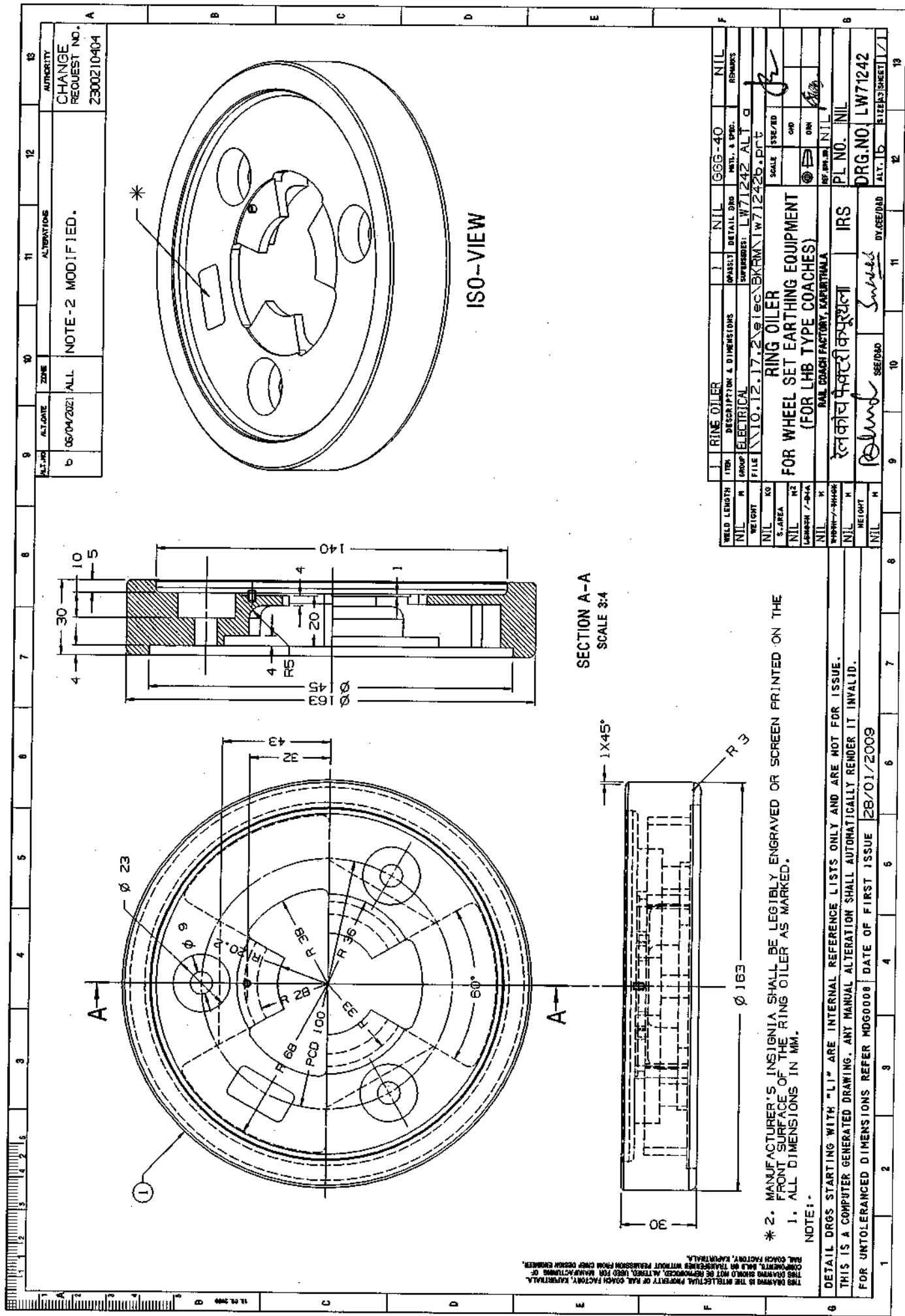
NOTE:- 1. ALL DIMENSIONS IN MM.

F

G

NOTE:- 1. ALL DIMENSIONS IN MM.

Z		COILED SPRING		1	NIL	151-6911-1002	SPRINGS STEEL
1		CLIP SPRING		1	NIL	55-301	SPRINGS
ITEM		DESCRIPTION & DIMENSIONS		Q-ASSET		DETAIL DRG	
NIL		ELECTRICAL		GROUP		MATERIAL & SPEC.	
FILE		110.12.17.281ec		SUPERSEDES:		NIL	
WEIGHT		110.12.17.281ec		BKR		1712400.DWG	
NIL		KG		CLIP ASSEMBLY		301	
S.AREA		M <sup>2</sup>		FOR WHEEL SET EARTHING EQUIPMENT		SCALE	
NIL		M <sup>2</sup>		(FOR LHB TYPE COACHES)		1:1	
LENGTH		M		NIL		DIN	
NIL		M		NIL		DIN	
WHEN ORDERED		MATERIAL		NIL		NIL	
NIL		M		NIL		NIL	
HEIGHT		M		NIL		NIL	
NIL		M		NIL		NIL	
DETAIL DRGS STARTING WITH "LI" ARE INTERNAL REFERENCE LISTS ONLY AND ARE NOT FOR ISSUE.		THIS IS A COMPUTER GENERATED DRAWING. ANY MANUAL ALTERATION SHALL AUTOMATICALLY RENDER IT INVALID.		FOR UNTOLERANCED DIMENSIONS REFER MDG0008		DATE OF FIRST ISSUE	
1		2		3		4	
5		6		7		8	
9		10		11		12	
13		14		15		16	
17		18		19		20	
21		22		23		24	
25		26		27		28	
29		30		31		32	
33		34		35		36	
37		38		39		40	
41		42		43		44	
45		46		47		48	
49		50		51		52	
53		54		55		56	
57		58		59		60	
61		62		63		64	
65		66		67		68	
69		70		71		72	
73		74		75		76	
77		78		79		80	
81		82		83		84	
85		86		87		88	
89		90		91		92	
93		94		95		96	
97		98		99		100	
101		102		103		104	
105		106		107		108	
109		110		111		112	
113		114		115		116	
117		118		119		120	
121		122		123		124	
125		126		127		128	
129		130		131		132	
133		134		135		136	
137		138		139		140	
141		142		143		144	
145		146		147		148	
149		150		151		152	
153		154		155		156	
157		158		159		160	
161		162		163		164	
165		166		167		168	
169		170		171		172	
173		174		175		176	
177		178		179		180	
181		182		183		184	
185		186		187		188	
189		190		191		192	
193		194		195		196	
197		198		199		200	
201		202		203		204	
205		206		207		208	
209		210		211		212	
213		214		215		216	
217		218		219		220	
221		222		223		224	
225		226		227		228	
229		230		231		232	
233		234		235		236	
237		238		239		240	
241		242		243		244	
245		246		247		248	
249		250		251		252	
253		254		255		256	
257		258		259		260	
261		262		263		264	
265		266		267		268	
269		270		271		272	
273		274		275		276	
277		278		279		280	
281		282		283		284	
285		286		287		288	
289		290		291		292	
293		294		295		296	
297		298		299		300	
301		302		303		304	
305		306		307		308	
309		310		311		312	
313		314		315		316	
317		318		319		320	
321		322		323		324	
325		326		327		328	
329		330		331		332	
333		334		335		336	
337		338		339		340	
341		342		343		344	
345		346		347		348	
349		350		351		352	
353		354		355		356	
357		358		359		360	
361		362		363		364	
365		366		367		368	
369		370		371		372	
373		374		375		376	
377		378		379		380	
381		382		383		384	
385		386		387		388	
389		390		391		392	
393		394		395		396	
397		398		399		400	
401		402		403		404	
405		406		407		408	
409		410		411		412	
413		414		415		416	
417		418		419		420	
421		422		423		424	
425		426		427		428	
429		430		431		432	
433		434		435		436	
437		438		439		440	
441		442		443		444	
445		446		447		448	
449		450		451		452	
453		454		455		456	
457		458		459		460	
461		462		463		464	
465		466		467		468	
469		470		471		472	
473		474		475		476	
477		478		479		480	
481		482		483		484	
485		486		487		488	
489		490		491		492	
493		494		495		496	
497		498		499		500	
501		502		503		504	
505		506		507		508	
509		510		511		512	
513		514		515		516	
517		518		519		520	
521		522		523		524	
525		526		527		528	
529		530		531		532	
533		534		535		536	
537		538		539		540	
541		542		543		544	
545		546		547		548	
549		550		551		552	
553		554		555		556	
557		558		559		560	
561		562		563		564	
565		566		567		568	
569		570		571		572	
573		574		575		576	
577		578		579		580	
581		582		583		584	
585		586		587		588	
589		590		591		592	
593		594		595		596	
597		598		599		600	
601		602		603		604	
605		606		607		608	
609		610		611		612	
613		614		615		616	
617		618		619		620	
621		622		623		624	
625		626		627		628	
629		630		631		632	
633		634		635		636	
637		638		639		640	
641		642		643		644	
645		646		647		648	
649		650		651		652	
653		654		655		656	
657		658		659		660	
661		662		663		664	
665		666		667		668	
669		670		671		672	
673		674		675		676	
677		678		679		680	
681		682		683		684	
685		686		687		688	
689		690		691		692	
693		694		695		696	
697		698		699		700	
701		702		703		704	
705		706		707		708	
709		710		711		712	
713		714		715		716	
717		718		719		720	
721		722		723		724	
725		726		727		728	
729		730		731		732	
733		734		735		736	
737		738		739		740	
741		742		743		744	
745		746		747		748	
749		750		751		752	
753		754		755		756	
757		758		759		760	
761		762		763		764	
765		766		767		768	
769		770		771		772	
773		774		775		776	
777		778		779		780	
781		782		783		784	
785		786		787		788	
789		790		791		792	
793		794		795		796	
797		798		799		800	
801		802		803		804	
805		806		807		808	
809		810		811		812	
813		814		815		816	
817		818		819		820	
821		822		823		824	
825		826		827		828	
829		830		831		832	
833		834		835		836	
837		838		839		840	
841		842		843		844	
845		846		847		848	
849		850		851		852	
853		854		855		856	
857		858		859		860	
861		862		863		864	
865		866		867		868	
869		870		871		872	
873		874		875		876	
877		878		879		880	
881		882		883		884	
885		886		887		888	
889		890		891		892	
893		894		895		896	
897		898		899		900	
901		902		903		904	
905		906		907		908	
909		910		911		912	
913		914		915		916	
917		918		919		920	
921		922		923		924	
925		926		927		928	
929		930		931		932	
933		934		935		936	
937		938		939		940	
941		942		943		944	
945		946		947		948	
949		950		951		952	
953		954		955		956	
957		958		959		960	



ALT. NO.	ALT. DATE	ZONE	ALTERATIONS	AUTHORITY
b	06/04/2021	ALL	NOTE-2 MODIFIED.	CHANGE REQUEST NO. Z300210404

ITEM	GROUP	DESCRIPTION & DIMENSIONS	DETAIL Dwg	MTL. & SPS.	REMARKS
1	RING OILER	FOR WHEEL SET EARTHING EQUIPMENT (FOR LHB TYPE COACHES)	110.12.17.2	666-40	NIL
2	WHEEL SET	FOR WHEEL SET EARTHING EQUIPMENT (FOR LHB TYPE COACHES)	110.12.17.2	666-40	NIL
3	WHEEL SET	FOR WHEEL SET EARTHING EQUIPMENT (FOR LHB TYPE COACHES)	110.12.17.2	666-40	NIL
4	WHEEL SET	FOR WHEEL SET EARTHING EQUIPMENT (FOR LHB TYPE COACHES)	110.12.17.2	666-40	NIL
5	WHEEL SET	FOR WHEEL SET EARTHING EQUIPMENT (FOR LHB TYPE COACHES)	110.12.17.2	666-40	NIL
6	WHEEL SET	FOR WHEEL SET EARTHING EQUIPMENT (FOR LHB TYPE COACHES)	110.12.17.2	666-40	NIL
7	WHEEL SET	FOR WHEEL SET EARTHING EQUIPMENT (FOR LHB TYPE COACHES)	110.12.17.2	666-40	NIL
8	WHEEL SET	FOR WHEEL SET EARTHING EQUIPMENT (FOR LHB TYPE COACHES)	110.12.17.2	666-40	NIL
9	WHEEL SET	FOR WHEEL SET EARTHING EQUIPMENT (FOR LHB TYPE COACHES)	110.12.17.2	666-40	NIL
10	WHEEL SET	FOR WHEEL SET EARTHING EQUIPMENT (FOR LHB TYPE COACHES)	110.12.17.2	666-40	NIL
11	WHEEL SET	FOR WHEEL SET EARTHING EQUIPMENT (FOR LHB TYPE COACHES)	110.12.17.2	666-40	NIL
12	WHEEL SET	FOR WHEEL SET EARTHING EQUIPMENT (FOR LHB TYPE COACHES)	110.12.17.2	666-40	NIL
13	WHEEL SET	FOR WHEEL SET EARTHING EQUIPMENT (FOR LHB TYPE COACHES)	110.12.17.2	666-40	NIL
14	WHEEL SET	FOR WHEEL SET EARTHING EQUIPMENT (FOR LHB TYPE COACHES)	110.12.17.2	666-40	NIL
15	WHEEL SET	FOR WHEEL SET EARTHING EQUIPMENT (FOR LHB TYPE COACHES)	110.12.17.2	666-40	NIL
16	WHEEL SET	FOR WHEEL SET EARTHING EQUIPMENT (FOR LHB TYPE COACHES)	110.12.17.2	666-40	NIL
17	WHEEL SET	FOR WHEEL SET EARTHING EQUIPMENT (FOR LHB TYPE COACHES)	110.12.17.2	666-40	NIL
18	WHEEL SET	FOR WHEEL SET EARTHING EQUIPMENT (FOR LHB TYPE COACHES)	110.12.17.2	666-40	NIL
19	WHEEL SET	FOR WHEEL SET EARTHING EQUIPMENT (FOR LHB TYPE COACHES)	110.12.17.2	666-40	NIL
20	WHEEL SET	FOR WHEEL SET EARTHING EQUIPMENT (FOR LHB TYPE COACHES)	110.12.17.2	666-40	NIL

\* 2. MANUFACTURER'S INSIGNIA SHALL BE LEGIBLY ENGRAVED OR SCREEN PRINTED ON THE FRONT SURFACE OF THE RING OILER AS MARKED.

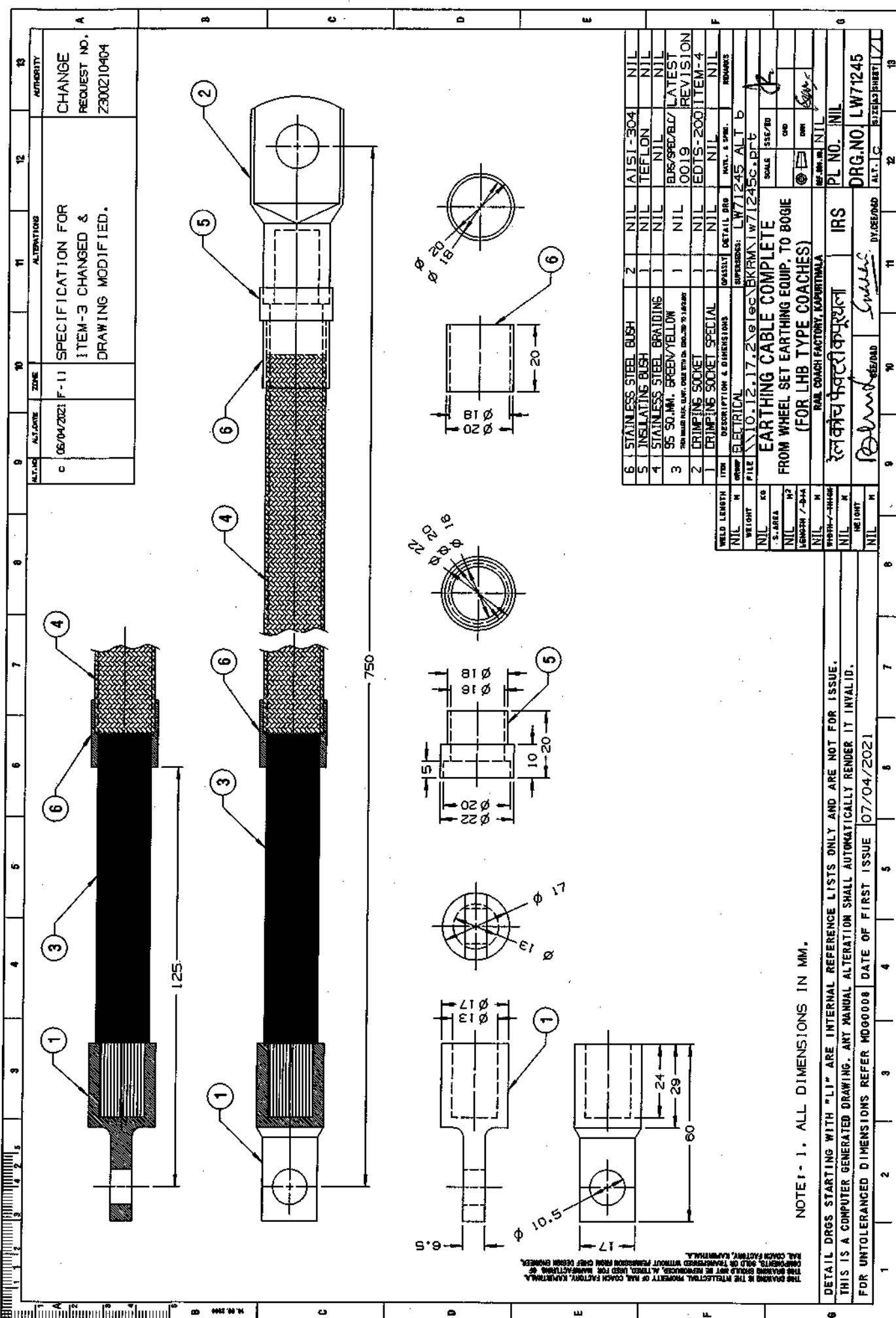
NOTE:-

1. ALL DIMENSIONS IN MM.

DETAIL DRGS STARTING WITH "LI" ARE INTERNAL REFERENCE LISTS ONLY AND ARE NOT FOR ISSUE.

THIS IS A COMPUTER GENERATED DRAWING. ANY MANUAL ALTERATION SHALL AUTOMATICALLY RENDER IT INVALID.

FOR UNTOLERANCED DIMENSIONS REFER MDG0008 DATE OF FIRST ISSUE 28/01/2009



ITEM	DESCRIPTION	QTY	UNIT	REMARKS
1	DRIPPING SOCKET	1	NIL	EDIS-200 ITEM-4
2	DRIPPING SOCKET	1	NIL	EDIS-200 ITEM-4
3	95 SQ.MM. GREEN/YELLOW	1	NIL	EDIS-200 ITEM-4
4	STAINLESS STEEL BRAIDING	1	NIL	EDIS-200 ITEM-4
5	INSULATING BUSH	1	NIL	EDIS-200 ITEM-4
6	STAINLESS STEEL BUSH	2	NIL	EDIS-200 ITEM-4

WELD LENGTH	NIL
WEIGHT	NIL
AREA	NIL
PERMITS	NIL
DATE	07/04/2021

PL NO.	NIL
DRG. NO.	LW71245
ALT.	1

NOTE:- 1. ALL DIMENSIONS IN MM.

DETAIL DRGS STARTING WITH "LI" ARE INTERNAL REFERENCE LISTS ONLY AND ARE NOT FOR ISSUE.  
THIS IS A COMPUTER GENERATED DRAWING. ANY MANUAL ALTERATION SHALL AUTOMATICALLY RENDER IT INVALID.  
FOR UNTOLERANCED DIMENSIONS REFER WDG00008 DATE OF FIRST ISSUE 07/04/2021

IS: 1367-2002  
SEC-1, P-14, A2-70

12.5

85

40

28

36

108

17

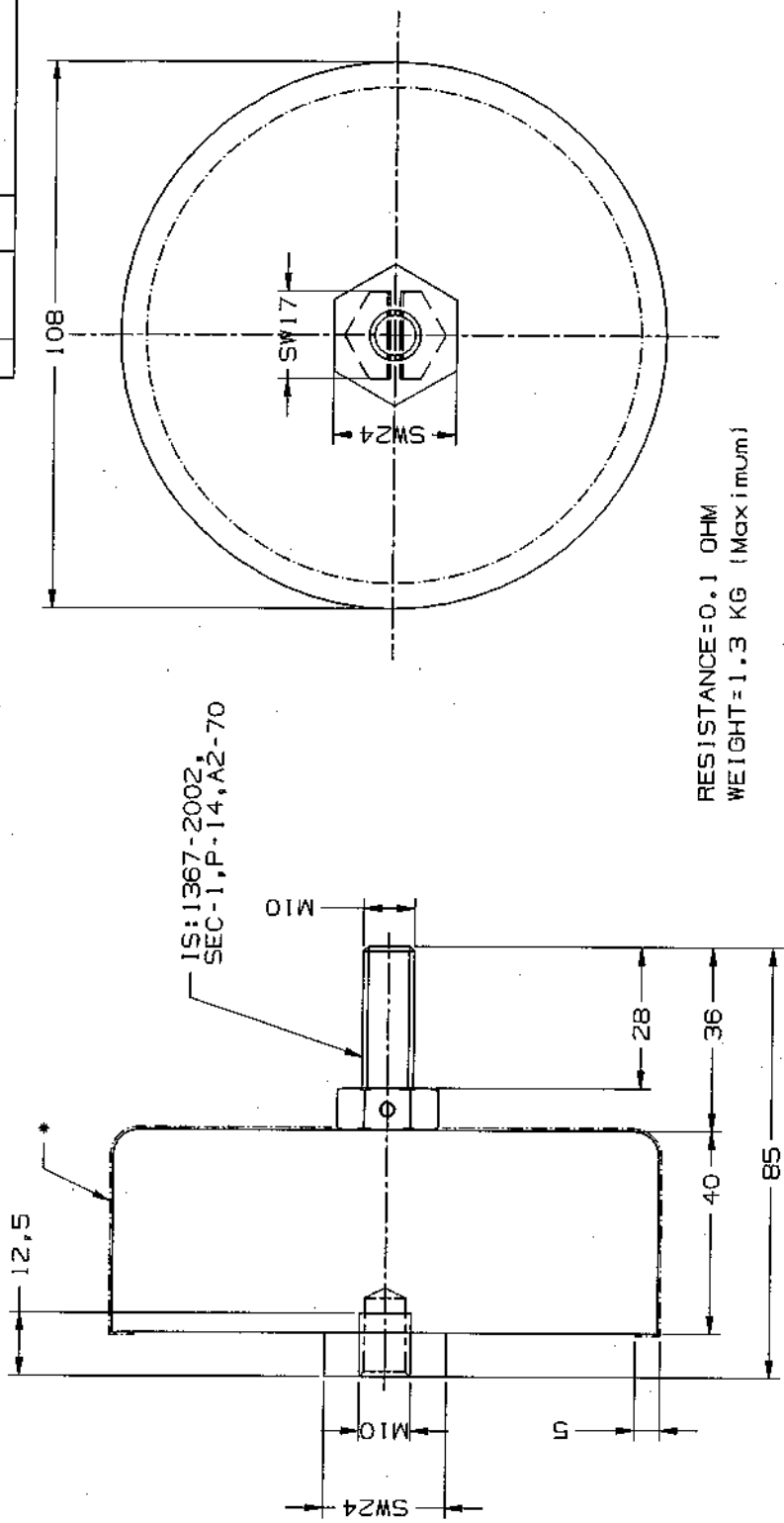
SW24

SW17

RESISTANCE=0.1 OHM  
WEIGHT=1.3 KG (Maximum)

NOTE:-  
1. ALL DIMENSIONS IN MM.  
2. THE COLOUR OF THE OUTER BODY SHALL BE MATT BITTER CHOCOLATE OF M/S BERGER PAINT.  
3. MANUFACTURER'S INSIGNIA/SERIAL NO. SHALL BE PUNCHED/CASTED IN THE ASSEMBLY.

DETAIL DRS STARTING WITH "LI" ARE INTERNAL REFERENCE LISTS ONLY AND ARE NOT FOR ISSUE.  
THIS IS A COMPUTER GENERATED DRAWING. ANY MANUAL ALTERATION SHALL AUTOMATICALLY RENDER IT INVALID.  
FOR UNTOLERANCED DIMENSIONS REFER MDG0006 DATE OF FIRST ISSUE 30/08/2005



RESISTANCE=0.1 OHM  
WEIGHT=1.3 KG (Maximum)

3. MANUFACTURER'S INSIGNIA/SERIAL NO. SHALL BE PUNCHED/CASTED IN THE ASSEMBLY.  
\* 2. THE COLOUR OF THE OUTER BODY SHALL BE MATT BITTER CHOCOLATE OF M/S BERGER PAINT.  
1. ALL DIMENSIONS IN MM.  
NOTE:-

DETAIL DRS STARTING WITH "LI" ARE INTERNAL REFERENCE LISTS ONLY AND ARE NOT FOR ISSUE. THIS IS A COMPUTER GENERATED DRAWING. ANY MANUAL ALTERATION SHALL AUTOMATICALLY RENDER IT INVALID. FOR UNTOLERANCED DIMENSIONS REFER MDG0008 DATE OF FIRST ISSUE 30/08/2005

DETAIL ORGS STARTING WITH "LI" ARE INTERNAL REFERENCE LISTS ONLY AND ARE NOT FOR ISSUE.  
THIS IS A COMPUTER GENERATED DRAWING. ANY MANUAL ALTERATION SHALL AUTOMATICALLY RENDER IT INVALID.

[illegible]



(10)  
✓

## Corrigendum-7

This corrigendum is issued to specification for Wheel Set Earthing Device i.e. EDTS101, Rev. C, Am-2, Corr-6 with Annexure-1 to modifications in the drawings of Arrangement of Wheel Set Earthing Equipment, Earthing Resistor and Earthing cable complete as mentioned below:

- Drg.no.CG-15070,Alt-'1' is applicable for Item-12 of the drg.no.LW71231,Alt-'f'

**Clause 5.0 Technical Data:-**

Body of the resistor unit shall be fabricated from minimum 1.6mm stainless steel sheet to Grade SS-304.

**Clause 11.0:**

**Enclosures:** The drawings at S.No.is given below are amended as follows:

S.No	Existing drg. no.	Revised drg. no.
ii	Drawing no. LW71231 alt.'e'	Drawing no. LW71231 alt.'f'
xvi	Drawing no. LW71245 alt.'c'	Drawing no. LW71245 alt.'d'
xvii	Drawing no. LW71246 alt.'b'	Drawing no. LW71246 alt.'c'
xix	Drawing no. LW71248 alt.'b'	Drawing no. LW71248 alt.'c'
xx	Drawing no. LW71249 alt.'b'	Drawing no. LW71249 alt.'c'

EDTS-101,Rev.-C, AM-1,Corr-6 with Annexure-1	7	03.10.2022	<i>je</i>	<i>Blunt</i>	<i>Suresh</i>	1 of 1
SPEC. NO.	CORR.	DATE	SSE/CAD	SEE/D&D	DY.CEE/D&D	PAGE