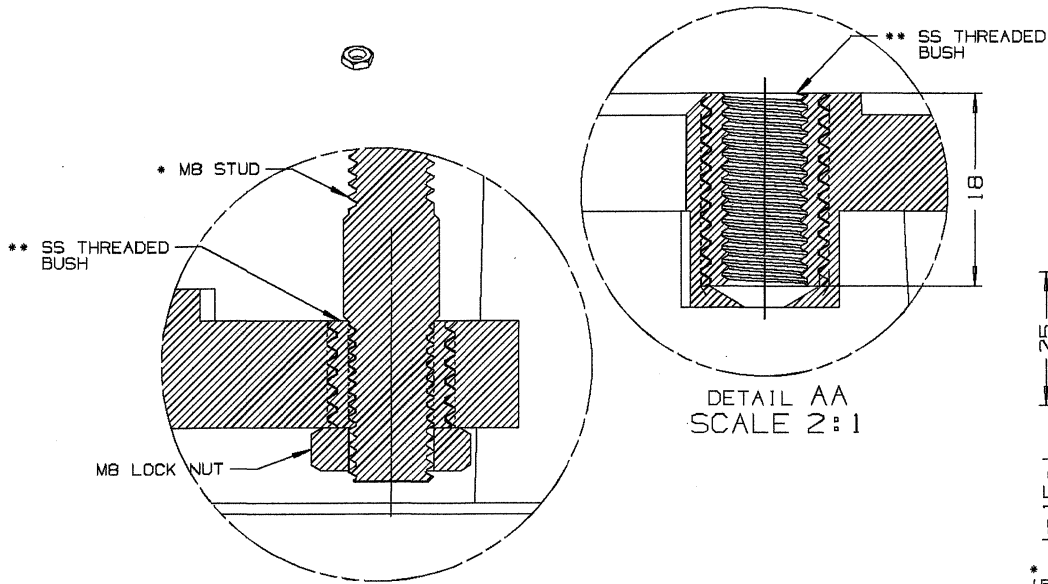
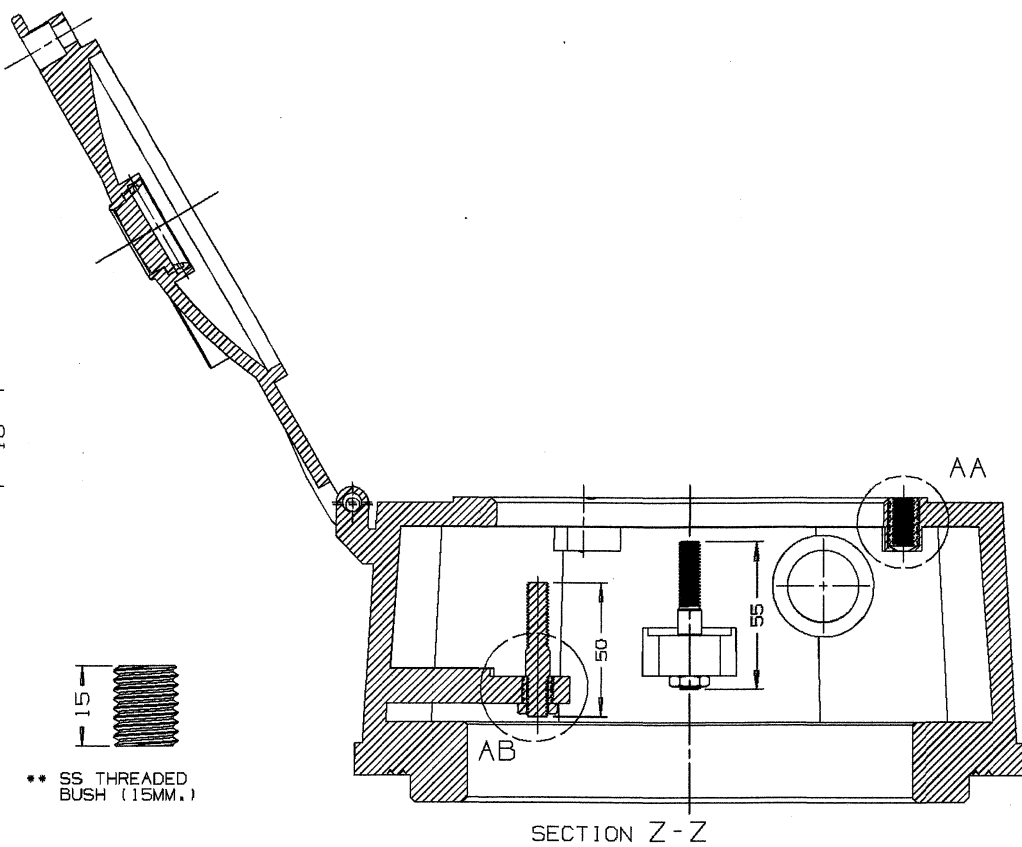
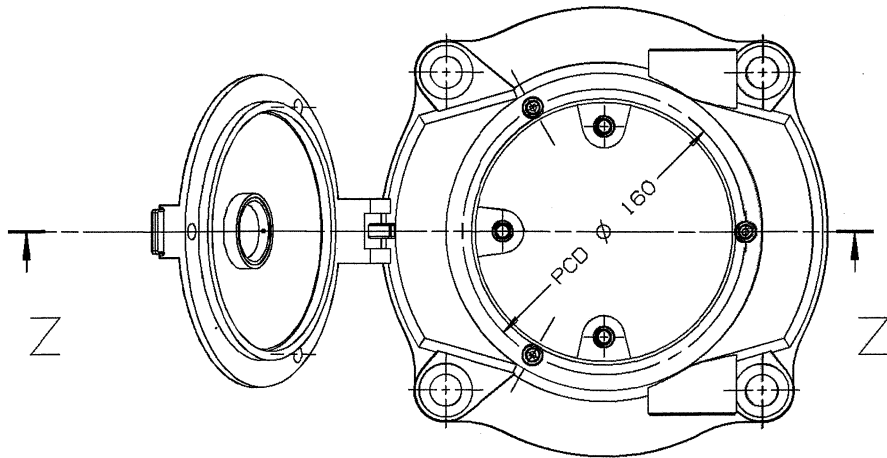


Exploded view diagram of a mechanical assembly. The main component is a cylindrical housing with a flange and four mounting feet. A circular lid is shown at the top left, hinged to the housing. Various components are shown in their relative positions, with dashed lines indicating assembly paths. Labels include:

- M12 THREADED HOLE SUITABLE FOR SS THREADED BUSH
- SS THREADED BUSH (10MM.)
- MB STUD
- SS THREADED BUSH (15MM.)
- SS THREADED BUSH (18MM.)
- M12 THREADED HOLE SUITABLE FOR SS THREADED BUSH
- MB LOCK NUT



1. ALL DIMENSIONS IN MM.
 **2. THREADED BUSH SHALL BE OF SS MATERIAL TO AISI 304. THE BUSH SHALL HAVE M12X1.75 (RH) THREAD ON OUTSIDE AND M8X1.25 (RH) THREAD ON INSIDE.
 a) THREADED BUSH OF LENGTH 18MM.(3-NOS.) SHALL BE USED FOR FASTENING THE COVER.
 b) THREADED BUSH OF LENGTH 15MM.(2-NOS.) & 10MM.(1-NO.) SHALL BE USED FOR FASTENING.
 M8 STUD OF BRUSH HOLDER ASSEMBLY.
 * 3. M8 STUD SHALL BE OF AISI 304 MATERIAL. M8 STUD SHALL BE PROPERLY SCREWED WITH LOCK NUT FROM BOTTOM SIDE.
 4. THIS DRAWING SHALL BE REFERED ALONGWITH CAI NO. ED/CAI/031, DATED:20.03.2024.

1	2	3	4	5	6	7	8	9	10	11	12	13
---	---	---	---	---	---	---	---	---	----	----	----	----