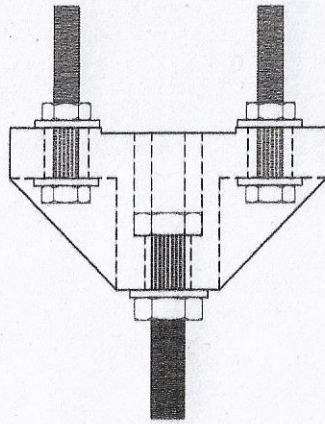
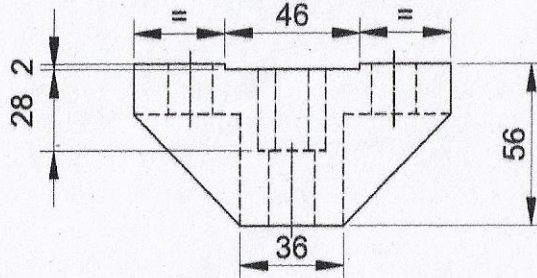


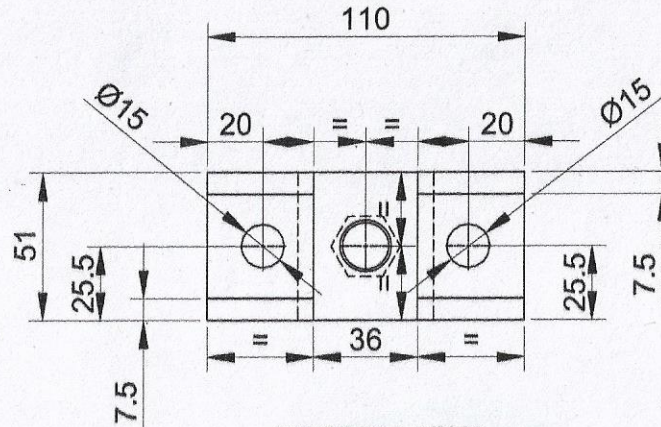
PYRAMID TYPE INSULATOR



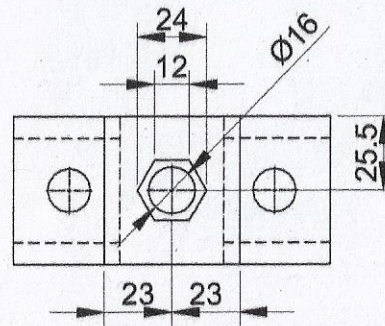
TOP VIEW
WITH HARDWARE



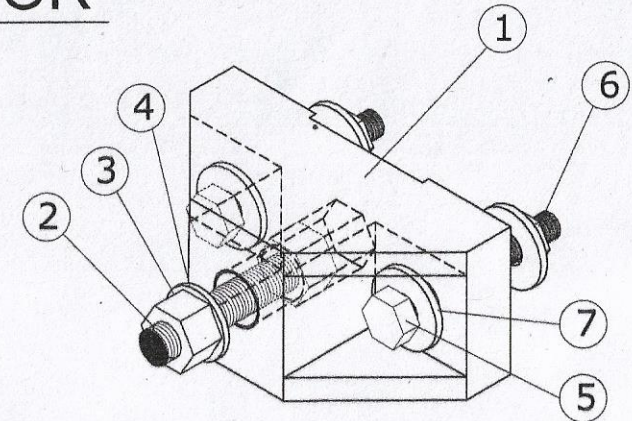
TOP VIEW
WITHOUT HARDWARE



FRONT VIEW
WITHOUT HARDWARE



BACK VIEW
WITHOUT HARDWARE



ISO. VIEW

REF. NO.	NO OFF.	DESCRIPTION	MATERIAL	SPECIFICATION.
7.	4	M10 PLAIN WASHER	MILD STEEL	IS:2018 (LATEST)
6.	2	HEX.HD. NUT M10	MILD STEEL	IS:1360 (LATEST)
5.	2	HEX.HD. SCREW M10 X 60	MILD STEEL	IS:1360 (LATEST)
4.	1	M12 PLAIN WASHER	MILD STEEL	IS:2018 (LATEST)
3.	1	HEX.HD. NUT M12	MILD STEEL	IS:1360 (LATEST)
2.	1	HEX.HD. SCREW M12 X 60	MILD STEEL	IS:1360 (LATEST)
1.	1	INSULATOR	EPOXY/FRP MOULDED	IS:4820 (LATEST)

NOTE:

1. ALL DIMENSIONS ARE IN MM.
2. ONE PROTOTYPE SAMPLE SHALL BE APPROVED BY CONSIGNEE BEFORE COMMENCING BULK SUPPLY.

PYRAMID TYPE INSULATOR					Dy.C.E.E./W	
REF.	AS PER SAMPLE				A.E.E.(G)	
			DATE	INTL	S.S.E./EM	
			DRN	14/9/24	SOUTH EASTERN RAILWAY	
			TC		ELECTRICAL DEPARTMENT	
DATE	MODIFICATION	INTL	CKD	16/9/24	DRG. NO. - Dy C.E.E./WS/KGP/EM/2324	