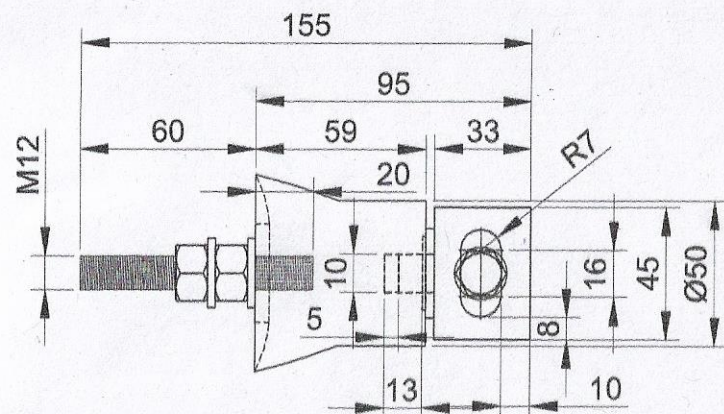
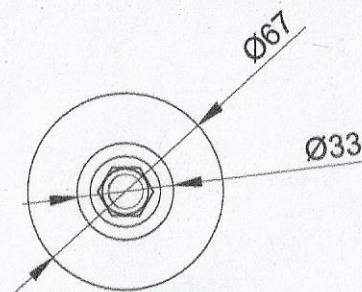


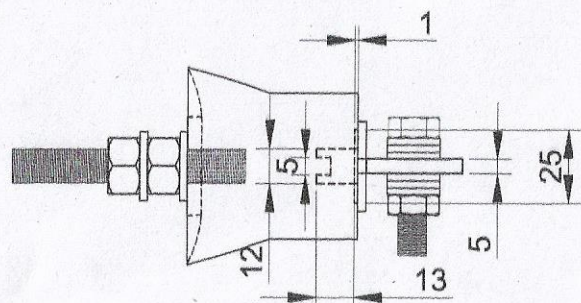
PIN TYPE INSULATOR



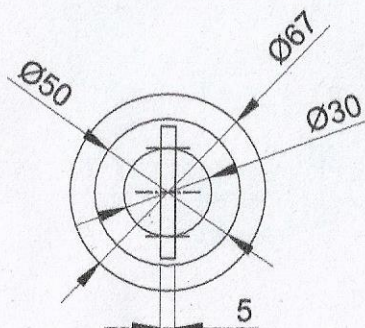
TOP VIEW



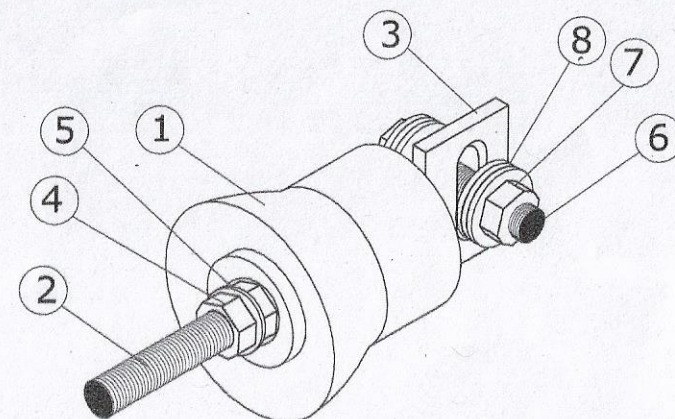
FRONT VIEW



SIDE VIEW



BACK VIEW



ISO. VIEW

REF. NO.	NO OFF.	DESCRIPTION	MATERIAL	SPECIFICATION.
8.	6	M10 PLAIN WASHER	MILD STEEL	IS:2018 (LATEST)
7.	1	HEX.HD. NUT M10	MILD STEEL	IS:1360 (LATEST)
6.	1	HEX.HD. SCREW M10 X 40	MILD STEEL	IS:1360 (LATEST)
5.	2	M12 PLAIN WASHER	MILD STEEL	IS:2018 (LATEST)
4.	2	HEX.HD. NUT M12	MILD STEEL	IS:1360 (LATEST)
3.	1	METAL BRACKET	MILD STEEL	IS:1360 (LATEST)
2.	1	STUD M12X80	MILD STEEL	IS:1360 (LATEST)
1.	1	INSULATOR	EPOXY/FRP MOULDED	IS:4820 (LATEST)

NOTE:

1. ALL DIMENSIONS ARE IN MM.
2. ONE PROTOTYPE SAMPLE SHALL BE APPROVED BY CONSIGNEE BEFORE COMMENCING BULK SUPPLY.

PIN TYPE INSULATOR					Dy.C.E.E./W
REF.	AS PER SAMPLE				A.E.E.(G)
			DATE	INTL	S.S.E./EM
		DRN	14/9/24	GP	SOUTH EASTERN RAILWAY
		TC			ELECTRICAL DEPARTMENT
DATE	MODIFICATION	INTL	CKD	16/9/24	DRG. NO.- Dy C.E.E./WS/KGP/EM/2224