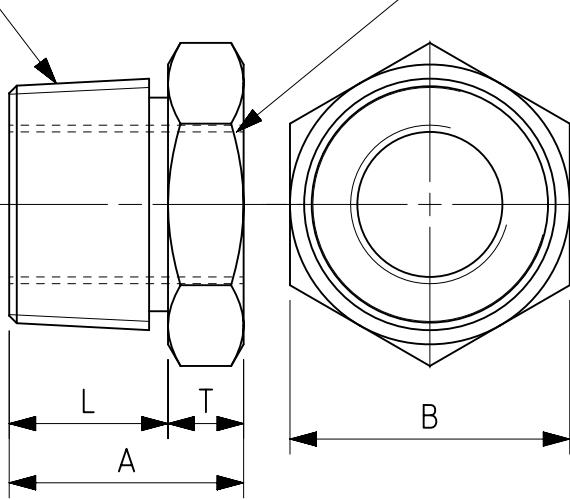
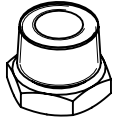


INTERNAL FEMALE
ISO 228/1 PARALLEL THREAD


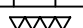
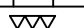
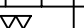
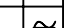


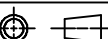


1. REMOVE ALL BURRS & SHARP EDGES.
2. TO BE ZINC PLATED (10 μ)/PASSIVATED.
3. ALL DIMENSIONS ARE IN mm EXCEPT OTHERWISE STATED.
4. REF. NO.2 IS APPLICABLE FOR WAP / 5 & REF. NO.1 & 2 ARE FOR WAG/9 LOCO ONLY.
5. ISO 7/1 & ISO 228/1 FOR TAPER AND PARALLEL THREADS RESPECTIVELY.

SL.NO.	NOMINAL SIZE PARALLEL TAPER x	L (MIN)	T (MIN)	A (MIN)	B A/FLAT
1	1" x 1/2"	21.0	10 $^{+2}_{-0}$	31.0 $^{+5}_{-0}$	37 $^{+5}_{-0}$
2	1 1/4" x 3/4"	24.0	11 $^{+2}_{-0}$	35.0 $^{+5}_{-0}$	47 $^{+5}_{-0}$
3	1 1/4" x 1"	24.0	11 $^{+2}_{-0}$	35.0 $^{+5}_{-0}$	47 $^{+5}_{-0}$
4	3/4" x 1/2"	19.0	10 $^{+2}_{-0}$	29 $^{+5}_{-0}$	27 $^{+5}_{-0}$
5	1/2" x 1"	24.0	13 $^{+2}_{-0}$	37 $^{+5}_{-0}$	52 $^{+1.0}_{-0}$
6	1" x 3/4"	21.0	10 $^{+2}_{-0}$	31 $^{+5}_{-0}$	37 $^{+5}_{-0}$
7	1/2" x 3/8"	17.5	8 $^{+2}_{-0}$	25.5 $^{+2}_{-0}$	22 $^{+5}_{-0}$
8	3/4" x 3/8"	19.0	10 $^{+2}_{-0}$	29 $^{+5}_{-0}$	27 $^{+5}_{-0}$

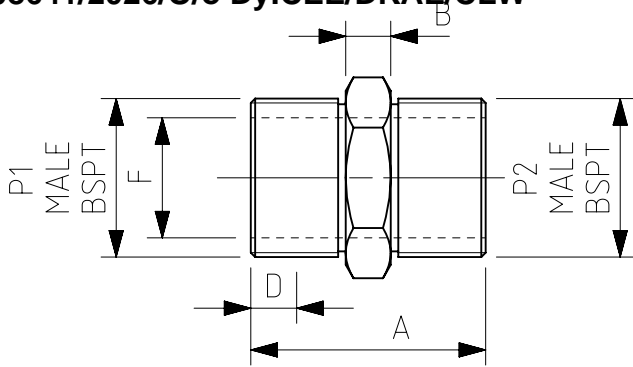
8	/		Reducing Bush		STEEL	ASTM A108	
7	/		Reducing Bush		STEEL	ASTM A108	
6	/		Reducing Bush		STEEL	ASTM A108	
5	/		Reducing Bush		STEEL	ASTM A108	
4	/		Reducing Bush		STEEL	ASTM A108	
3	/		Reducing Bush		STEEL	ASTM A108	
2	/		Reducing Bush		STEEL	ASTM A108	
1	/		Reducing Bush		STEEL	ASTM A108	
निर्देश संख्या	लागत एवं वितरण संख्या	अंग आरेखण संख्या	वर्णन	मात्रा	पदार्थ	विशिष्ट	प्रति भार कि. ग्रा.
REF. NO.	C&D NO.	PART DRG. NO.	DESCRIPTION	QTY.	MATL	SPECN	WT. EACH IN K.G.

USED FOR LOCO WAG-9 / WAP-5

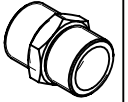
4		REDRAWN IN NX WITH 3RD ANGLE PROJECTION.	25-04-11	अभिलेखित DGN		चितरंजन रेलइंजन कारखाना CHITTARANJAN LOCOMOTIVE WORKS, INDIA												
3	AME/D&D	NOTE 4 DELETED. NOTES, TOLERANCES ON DIMENSIONS, ITEM SL. NOS. 3 TO 8 ADDED.	30-07-01	जॉचा व.अ.अ. CHD SSE		<p>पदार्थ MATL</p> <p>विशिष्टि SPECN</p> <p>वर्णन DESCRIPTION</p>	प्रति भार कि. ग्रा. WT. EACH IN KG											
2	AME/D&D	NOTE 4 ADDED	*-11-94	SUBHA NIKAR KUMBHAKAR														
1	AME/D&D	WAP-5 ADDED. SL. NO. WAS REF. NO. NOTE 3 ADDED. NO/LOCO COLUME DELETED.	*-4-94	Digitally signed by SUBHA NIKAR KUMBHAKAR Date: 2020.11.13 18:26:54 +05'30'														
परिवर्तन संख्या ALT.NO.	प्राधिकार AUTHY	वर्णन DESCRIPTION	दिनांकित बाधक DATED INITIAL	समीक्षित स.वि.अ. / व.वि.अ. REVIEWED AEE / SEE														
सतह - रुखाता का मान मा. मा. 3073 / अ. मा. सं. 1302 SURFACE ROUGHNESS VALUE TO IS:3073 / ISO:1302		अनिर्दिष्ट सह - सीमा मा. मा. : 2102 / अ. मा. सं. : 2768 UNSPECIFIED TOLERANCE TO IS : 2102 / ISO : 2768		TOL. CLS.	अनुमोदित उ.मु.वि.अ. APPROVED DYCEE	ĀRUP KUMAR MITRA	वर्णन DESCRIPTION											
		धातु-वेल्डिंग चिन्ह मा. मा. : 813 / अ. मा. सं. : 2553 WELDING SYMBOLS TO IS:813 / ISO:2553			दिनांक DATE	22-09-20	आरेखण संख्या DRAWING NO.											
पदांक GRADE NO.	सं1 N1	सं2 N2	सं3 N3	सं4 N4	सं5 N5	सं6 N6	सं7 N7	सं8 N8	सं9 N9	सं10 N10	सं11 N11	सं12 N12	रैखिक अनुपात SCALE	1:1	1209-18.406-074			
Rz	0.16-0.3	0.5-0.7	0.9-1.1	1.5-2.0	2.5-3.8	5.0-6.3	9.0-12	16-25	30-40	50-63	75-100	160-250						
Ra μm	0.025	0.05	0.1	0.2	0.4	0.8	1.6	3.2	6.3	12.5	25	50						
चिन्ह SYMBOL													संदर्भ / REF. 182-00278 ALT.-					
														परिवर्तन संख्या ALTERATION. NO.	4	पर्ण SHEET	1 OF 1	A4

This document/drawing was prepared by or on behalf of CLW and the copyright belongs to CLW. Reproduction in whole or in part requires prior written consent of CLW. As the drawing incorporates confidential information of CLW its disclosure to third parties also requires CLW's prior written consent.

NOTE:-




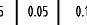

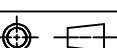
1. REMOVE ALL BURRS & SHARP EDGES.
2. TO BE Zn PLATED (10 MICRON)/
PASSIVATED.
3. ALL DIMENSIONS ARE IN mm EXCEPT
2 OTHERWISE STATED. DIMENSIONS ARE
INDICATIVE.
4. SL. No. 1 TO 8 ARE APPLICABLE
3 FOR WAG-9 & SL. No. 1 TO 12
ARE APPLICABLE FOR WAP-5 LOCO ONLY.



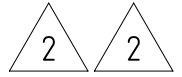
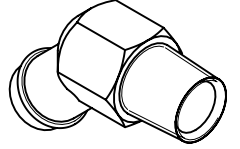
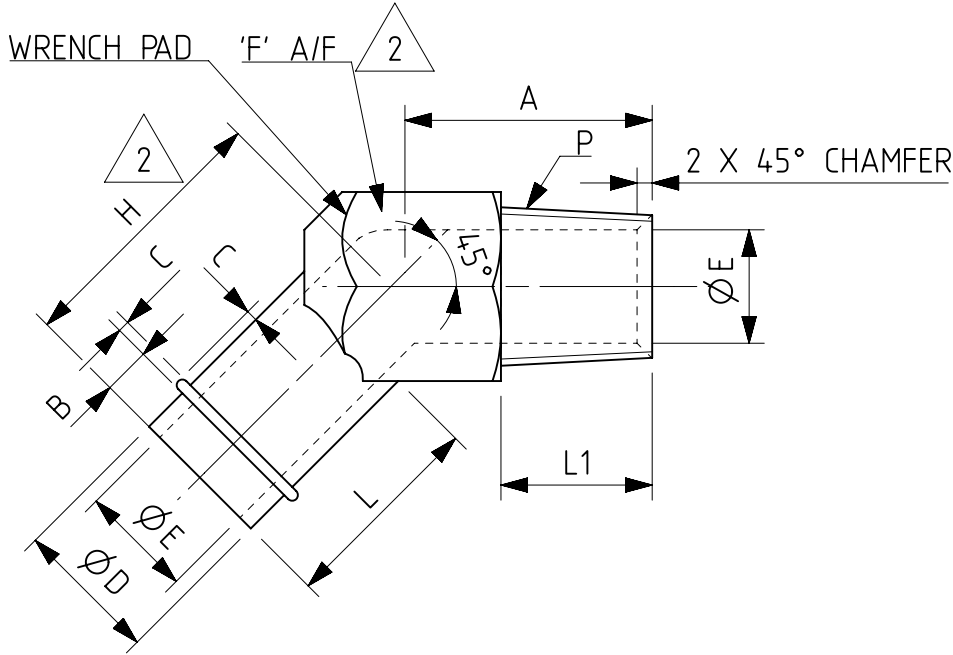
2	SL. No.	P1	P2	A (mm)	B (mm)	C (mm)	D (mm)	F (mm)	DUFFIELD CATALOGUE PART No.	
	1	1-1/4"	1-1/4"	61.11	11.9	44.45	12.7	31.75	D04/2020	OR SIMILAR
	2	3/4"	3/4"	47.62	8.73	28.57	9.52	18.25	D04/1212	"
	3	1/2"	3/8"	41.27	7.93	22.22	8.15	10.31	D04/86	"
	4	1/2"	1/2"	46.03	7.93	22.22	8.15	13.49	D04/88	"
	5	1"	3/4"	52.38	9.52	34.92	10.38	18.25	D04/1612	"
	6	3/8"	3/8"	34.92	6.35	19.05	6.35	10.31	D04/66	"
	7	1/4"	1/8"	30.16	6.35	15.875	5.99	7.46	D04/42	"
	8	3/8"	1/4"	34.92	6.35	19.05	6.35	7.14	D04/64	"
	9	3/4"	1/2"	47.62	8.73	28.57	9.82	13.47	D04/128	"
	10	1-1/4"	1"						D04/2016	"
	11	1/4"	1/4"	34.92	6.35	19.05	5.99	7.14	D04/44	"
	12	1"	1"	57.15	9.52	34.92	10.38	23.81	D04/1616	"

8		NIPPLE BSPTxBSPT	-	STEEL	ASTM A108	-
7		NIPPLE BSPTxBSPT	-	STEEL	ASTM A108	-
6		NIPPLE BSPTxBSPT	-	STEEL	ASTM A108	-
5		NIPPLE BSPTxBSPT	-	STEEL	ASTM A108	-
4		NIPPLE BSPTxBSPT	-	STEEL	ASTM A108	-
3		NIPPLE BSPTxBSPT	-	STEEL	ASTM A108	-
2		NIPPLE BSPTxBSPT	-	STEEL	ASTM A108	-
1		NIPPLE BSPTxBSPT	10	STEEL	ASTM A108	-
निर्देश संख्या	अंग आरेखण संख्या	वर्णन	मात्रा	पदार्थ	विशिष्टि	प्रति भार कि. ग्रा.
REF. NO.	PART DRG. NO.	DESCRIPTION	QTY.	MATL	SPECN	WT. EACH IN K.G.

1. ALL DIMENSIONS ARE IN mm
2. C&D NO.
3. QTY./LOCO: 1
4. NEXT LEVEL ASSEMBLY
DRG. NO.
5. USED FOR LOCO- WAG9,
WAP5

4		REDRAWN IN NX WITH 3RD ANGLE PROJECTION.	06-10-09	 <div>चितरंजन रेलइंजन कारखाना CHITTARANJAN LOCOMOTIVE WORKS, INDIA</div>																
3	AME/D&D	NOTE 4 ADDED.	19-04-99		पदार्थ STEEL	प्रति भार कि. ग्रा. WT. EACH IN KG														
2	AME/D&D	SL. NO. WAS REF. NO. NOTE 3 & WAP-5 ADDED. NO/LOCO COLUMN DELETED.	12-04-99																	
1	AME/D&D	QTY. OF REF. NO. 4 WAS 14	14-08-98																	
परिवर्तन संख्या ALT.NO.	प्राधिकार AUTHY	वर्णन DESCRIPTION	दिनांकित बाधक DATED INITIAL	समीक्षित स.वि.अ. / व.वि.अ. REVIEWED AEE / SEE	पदार्थ MATL	प्रति भार कि. ग्रा. WT. EACH IN KG														
सतह - रूखाता का मान भा. मा. 3073 / अ. मा. सं. 1302 SURFACE ROUGHNESS VALUE TO IS:3073 / ISO:1302	अनिर्दिष्ट सद्य - सीमा भा. मा. : 2102 / अ. मा. सं. : 2768 UNSPECIFIED TOLERANCE TO IS : 2102 / ISO : 2768		TOL. CLS.	अनुमोदित उ.मु.वि.अ. APPROVED DYCEE	विशिष्ट SPECN	ASTM A108														
		धातु-वेल्डन चिह्न भा. मा. : 813 / अ. मा. सं. : 2583 WELDING SYMBOLS TO IS:813 / ISO:2553		दिनांक DATE	वर्णन DESCRIPTION	NIPPLE (BSPT x BSPT)														
पदांक GRADE NO.	सं1 N1	सं2 N2	सं3 N3	सं4 N4	सं5 N5	सं6 N6	सं7 N7	सं8 N8	सं9 N9	सं10 N10	सं11 N11	सं12 N12	रैखिक अनुपात SCALE	N.T.S.	आरेखण संख्या DRAWING NO.	1209-18.406-076				
Rz	0.16-0.3	0.5-0.7	0.9-1.1	1.5-2.0	2.5-3.8	5.0-6.3	9.0-12	16-25	30-40	50-63	75-100	160-250								
Ra μm	0.025	0.05	0.1	0.2	0.4	0.8	1.6	3.2	6.3	12.5	25	50								
चिह्न SYMBOL													संदर्भ / REF. 182-00424 ALT-			परिवर्तन संख्या ALTERATION. NO.	4	पर्ण SHEET	1 OF 1	A4

This document/drawing was prepared by or on behalf of CLW and the copyright belongs to CLW. Reproduction in whole or in part requires prior written consent of CLW. As the drawing incorporates confidential information of CLW its disclosure to third parties also requires CLW's prior written consent.

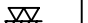
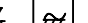
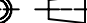


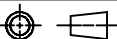


REF NO.	'P' THREAD SIZE	'A'	'L'	'Ø D'	'Ø E' MINIMUM OPENING	'B'	'C'	'L1' MIN	'F' A/F	'H'
1209-18.406-143-001	1" NPT	38 ^{+0.5} _{-0.0}	38.0 ^{+0.5} _{-0.0}	25.4 ± 0.13	22.3 ^{+0.2} _{-0.0}	7 ± 0.2	1.5 ^{+0.1} _{-0.0}	23.8 ^{+0.5} _{-0.0}	35 ^{+0.0} _{-0.5}	45 ^{+1.0} _{-0.0}

NOTE:-

1. REMOVE ALL BURRS AND SHARP EDGES.
2. TO BE Zn. PLATED(10 0 / PASSIVATED).
3. ALL DIMENSIONS ARE IN mm EXCEPT OTHERWISE STATED.
4. ELBOWS ARE TO BE MACHINED FROM FORGED BLANK AND NOT TO BE CAST.



3		REDRAWN IN NX WITH 3RD ANGLE PROJECTION.	08-10-10	अधिकृत DGN		 <div>चितरंजन रेलइंजन कारखाना CHITTARANJAN LOCOMOTIVE WORKS, INDIA</div>														
2	AME/D&D	DIMENSIONS 'F' & 'H' ADDED.	30-04-02	जॉचा CHD																
1	AME/D&D	PREVIOUS TABLE DELETED. NEW TABLE 45° CHAMFER, NOTES 3,4 ADDED.	30-07-01	अधीक्षक SUPDT.																
परिवर्तन संख्या ALT.NO.	प्राधिकार AUTHY	वर्णन DESCRIPTION	दिनांकित बाधक DATED INITIAL	समीक्षित व.अ REVIEWED SE		पदार्थ MATL	STEEL	प्रति भार कि. ग्रा. WT. EACH IN KG												
						विशिष्ट SPECN	ASTM A108													
सतह - रूखाता का मान मा. मा. 3073 / अ. मा. सं. 1302 SURFACE ROUGHNESS VALUE TO IS:3073 / ISO:1302	अनिर्दिष्ट सद्य - सीमा मा. मा. : 2102 / अ. मा. सं. : 2768 UNSPECIFIED TOLERANCE TO IS : 2102 / ISO : 2768		TOL. CLS.	अनुमोदित उ.मु.वि.अ APPROVED DYCEE		वर्णन DESCRIPTION	ELBOW -45° HOSE TAIL ZN PLATED													
	धातु-वेल्डन चिन्ह मा. मा. : 813 / अ. मा. सं. : 2553 WELDING SYMBOLS TO IS:813 / ISO:2553			दिनांक DATE	27-05-97															
पदांक GRADE NO.	सं1 N1	सं2 N2	सं3 N3	सं4 N4	सं5 N5	सं6 N6	सं7 N7	सं8 N8	सं9 N9	सं10 N10	सं11 N11	सं12 N12	रैखिक अनुपात SCALE	N.T.S.	आरेखण संख्या DRAWING NO.	182-00366				
Rz	0.16-0.3	0.5-0.7	0.9-1.1	1.5-2.0	2.5-3.8	5.0-6.3	9.0-12	16-25	30-40	50-63	75-100	160-250								
Ra μm	0.025	0.05	0.1	0.2	0.4	0.8	1.6	3.2	6.3	12.5	25	50								
चिन्ह SYMBOL																परिवर्तन संख्या ALTERATION. NO.	3	पर्ण SHEET	1 OF 1	A4
संदर्भ / REF.														182-00366	ALT.-0					

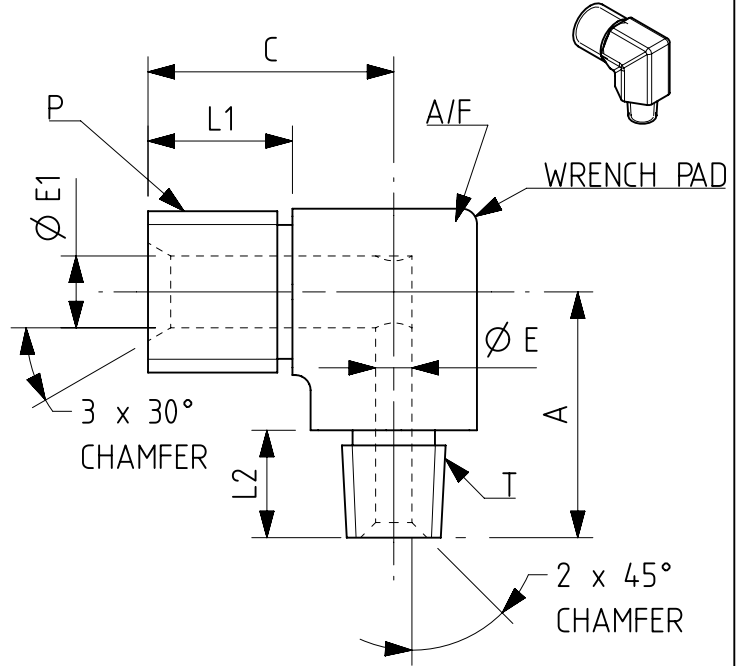
5008641/2026/O/o Dy.CEE/DKAE/CLW

NOTE:

1. REMOVE ALL BURRS & SHARP EDGES.
2. TO BE ZINC PLATED(10 μ)/PASSIVATED.
3. ALL DIMENSIONS ARE IN MM EXCEPT OTHERWISE STATED.
4. ISO 7/1 & ISO 228/1 FOR TAPER AND PARALLEL THREADS RESPECTIVELY.
5. ELBOWS ARE TO BE MACHINED FROM FORGED BLANK AND NOT TO BE CAST.
6. GENERAL TOLERANCE:

(a)BELOW 25.0 MM: $\begin{matrix} +.5 \\ -0 \end{matrix}$

(b)ABOVE 25.0 MM: $\begin{matrix} +1.0 \\ -0 \end{matrix}$



SL. NO.	A	C	A/F	T MALE TAPER THD. TO ISO 7/1	P MALE PARALLEL THD. TO ISO 228/1	L1 (MINIMUM)	L2 (MINIMUM)	Ø E MINIMUM OPENING	Ø E1 MINIMUM OPENING
1	32.5	32.5	$22^{+.5}_{-0}$	1/4"	1/2"	$19.1^{+.5}_{-0}$	$14.2^{+.5}_{-0}$	$4.8^{+.5}_{-0}$	$9.5^{+.5}_{-0}$
2	36	32.5	$22^{+.5}_{-0}$	1/2"	1/2"	$19.1^{+.5}_{-0}$	$19.1^{+.5}_{-0}$	$9.5^{+.5}_{-0}$	$9.5^{+.5}_{-0}$
3	30	29	$19^{+.5}_{-0}$	3/8"	3/8"	$14.2^{+.5}_{-0}$	$14.2^{+.5}_{-0}$	$7.9^{+.5}_{-0}$	$7.9^{+.5}_{-0}$

1. C&D NO.
2. QTY./LOCO:
3. NEXT LEVEL ASSEMBLY DRG. NO.
4. USED FOR LOCO- WAG9

3		ELBOW MALE/ MALE 3/8" TAPER X 3/8" PARALLEL	STEEL	ASTM A 108	
2		ELBOW MALE/ MALE 1/2" TAPER X 1/2" PARALLEL	STEEL	ASTM A 108	
1		ELBOW MALE/ MALE 1/4" TAPER X 1/2" PARALLEL	STEEL	ASTM A 108	
निर्देश संख्या	अंग आरेखण संख्या	वर्णन	मात्रा	पदार्थ	विशिष्टता
REF. NO.	PART DRG. NO.	DESCRIPTION	QTY.	MATL	SPECN
					WT. EACH IN K.G.

4		REDRAWN IN NX USING 3RD ANGLE PROJECTION	26-07-11
3	AME/D-II	DIMENSION $19.1^{+.5}_{-0}$ (L1) & $14.2^{+.5}_{-0}$ (L2) FOR ITEM SL.1 WERE $14.2^{+.5}_{-0}$ & $19.1^{+.5}_{-0}$ RESPECTIVELY	01-10-03
2	AME/D&D -II	3 x 30° CHAMFER WAS 2 x 45° CHAMFER	26-01-03
1	AME/D&D -II	DIMENSIONS A,C,A/F ADDED	30-04-02

परिवर्तन संख्या	प्राधिकार	वर्णन	दिनांक
ALT.NO.	AUTHY	DESCRIPTION	DATED INITIAL
सतह - रूखाता का मान मा. 3073 / अ. मा. सं. 1302	अतिरिक्त सद्य - सीमा मा. : 2102 / अ. मा. सं. : 2768	UNSPECIFIED TOLERANCE TO IS : 202 / ISO : 2768	TOL. CLS.
SURFACE ROUGHNESS VALUE TO IS:3073 / ISO:1302	धातु-वेल्डन चिन्ह मा. : 813 / अ. मा. सं. : 2553	WELDING SYMBOLS TO IS:813 / ISO:2553	
पदांक	सं1	सं2	सं3
GRADE NO.	N1	N2	N3
Rz	0.16-0.3	0.5-0.7	0.9-1.1
Ra μ m	0.025	0.05	0.1
चिन्ह	SYMBOL		

अधिकृत	मानक	मानक	मानक
DGN	मानक	मानक	मानक
जोधा व.अ.	मानक	मानक	मानक
CHD SSE	मानक	मानक	मानक
समीक्षित स.वि.अ. / व.वि.अ.	मानक	मानक	मानक
REVIEWED AEE / SEE	मानक	मानक	मानक
अनुमोदित स.वि.अ.	मानक	मानक	मानक
APPROVED DYCEE	मानक	मानक	मानक
दिनांक	मानक	मानक	मानक
DATE	मानक	मानक	मानक
रेखिक अनुपात	मानक	मानक	मानक
SCALE	मानक	मानक	मानक
संदर्भ / REF.	मानक	मानक	मानक
ALT.	मानक	मानक	मानक

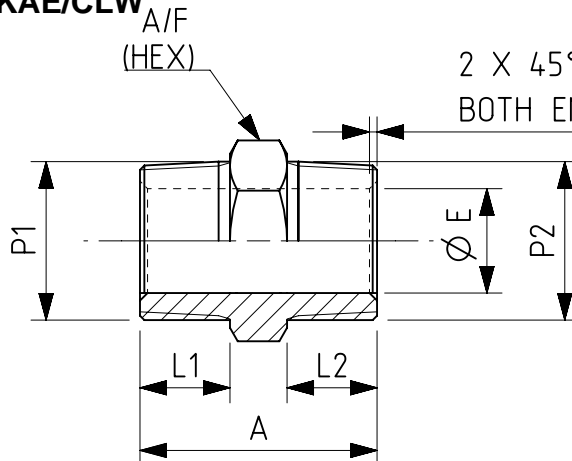


चितरंजन रेलइंजन कारखाना
CHITTARANJAN LOCOMOTIVE WORKS, INDIA

पदार्थ	STEEL	प्रति भार कि. ग्रा.
MATL		WT. EACH IN KG
विशिष्ट	ASTM A108	
SPECN		
वर्णन	ELBOW MALE-MALE (TAPER X PARALLEL)	
DESCRIPTION		
आरेखण संख्या	1209-18.406-207	
DRAWING NO.		
परिवर्तन संख्या	4	पृष्ठ 1 OF 1
ALTERATION. NO.		A4

W A/F
(HEX)

2 X 45° CHAMFER
BOTH ENDS



SL. NO.	P1 MALE TAPER TO ISO 7/1	P2 MALE TAPER THREAD TO ISO 7/1	L1	L2	A	Ø E MIN. OPENING	A/F (HEX)
1.	1-1/4"	1-1/4"	23.8	23.8	62.7	27.6	46
2.	3/4"	3/4"	19.1	19.1	46.9	15.9	28.5
3.	1/2"	3/8"	19.1	14.2	41.3	7.1	22
4.	1/2"	1/2"	19.1	19.1	46	10.4	22
5.	1"	3/4"	23.8	19.1	52.4	15.9	36
6.	3/8"	3/8"	14.2	14.2	34.9	7.1	19
7.	3/4"	1/2"	19.1	19.1	47.6	10.4	28.5
8.	3/8"	1/4"	14.2	14.2	34.9	4.8	19
9.	1"	1"	23.8	23.8	60	15.9	36
10	1"	3/4"	23.8	19.1	100	15.9	36

USED FOR LOCO
WAG-9 / WAP-5

<div>2</div> <div>1</div>	10	/		NIPPLE 1'' TAPER x 3/4'' TAPER		STEEL	ASTM A108	
	9	/		NIPPLE 1'' TAPER x 1'' TAPER		STEEL	ASTM A108	
	8	/		NIPPLE 3/8'' TAPER x 1/4'' TAPER		STEEL	ASTM A108	
	7	/		NIPPLE 3/4'' TAPER x 1/2'' TAPER		STEEL	ASTM A108	
	6	/		NIPPLE 3/8'' TAPER x 3/8'' TAPER		STEEL	ASTM A108	
	5	/		NIPPLE 1'' TAPER x 3/4'' TAPER		STEEL	ASTM A108	
	4	/		NIPPLE 1/2'' TAPER x 1/2'' TAPER		STEEL	ASTM A108	
	3	/		NIPPLE 1/2'' TAPER x 3/8'' TAPER		STEEL	ASTM A108	
	2	/		NIPPLE 3/4'' TAPER x 3/4'' TAPER		STEEL	ASTM A108	
	1	/		NIPPLE 1 1/4'' TAPER x 1 1/4'' TAPER		STEEL	ASTM A108	
निर्देश संख्या	लागत एवं वितरण संख्या	अंग आरेखण संख्या	वर्णन		मात्रा	पदार्थ	विशिष्टि	प्रति भार कि. ग्रा.
REF. NO.	C&D NO.	PART DRG. NO.	DESCRIPTION		QTY.	MATL	SPECN	WT. EACH IN K.G.

<div><div>3</div><div></div><div>REDRAWN IN NX WITH 3RD ANGLE PROJECTION</div><div>30-07-20</div></div>													<div>अधिकृत</div> <div>DGN</div>		<div><div><div><div>INDIAN RAILWAYS</div><div></div></div><div>चितरंजन रेलइंजन कारखाना</div><div>CHITTARANJAN LOCOMOTIVE WORKS, INDIA</div></div></div>		<div>पदार्थ</div> <div>STEEL</div>		<div>प्रति भार कि. ग्रा.</div> <div>WT. EACH IN KG</div>	
<div><div>2</div><div>DY.CEE/P ROJ/CON</div><div>SL. NO. 10 ADDED</div><div>16-07</div></div>													<div>जॉचा व.अ.अ.</div> <div>CHD SSE</div>		<div>SUBHAN KAR</div> <div>KUMBHA KAR</div> <div><div>Digitally signed by SUBHAN KAR DN: cn=SUBHAN KAR, o=Chittaranjan Locomotive Works, ou=Chittaranjan Locomotive Works, email=Subhan.Kar@clw.co.in, c=IN, Date: 2021.01.02 11:40:24 +05'30'</div></div>		<div>वर्णन</div> <div>ASTM A108</div>		<div>विशिष्ट</div> <div>SPECN</div>	
<div><div>परिवर्तन संख्या</div><div>ALT.NO.</div><div>प्राधिकार</div><div>AUTHY</div><div>वर्णन</div><div>DESCRIPTION</div><div>दिनांकित आधार</div><div>DATED INITIAL</div></div>													<div>समीक्षित</div> <div>स.वि.अ. / व.वि.अ.</div> <div>REVIEWED AEE / SEE</div>		<div>Pradeep P Khatana</div> <div><div>Digitally signed by Pradeep P Khatana DN: cn=Pradeep P Khatana, o=Chittaranjan Locomotive Works, ou=Chittaranjan Locomotive Works, email=Pradeep.Khatana@clw.co.in, c=IN, Date: 2021.07.13 11:07:38 +05'30'</div></div>		<div>वर्णन</div> <div>NIPPLE (TAPER x TAPER)</div>		<div>वर्णन</div> <div>DESCRIPTION</div>	
<div><div>सतह - रूखाता का मान मा. मा. 3073 / अ. मा. सं. 1302</div><div>SURFACE ROUGHNESS VALUE TO IS:3073 / ISO:1302</div><div>अनिर्दिष्ट सह - सीमा मा. मा. : 2102 / अ. मा. सं. : 2768</div><div>UNSPECIFIED TOLERANCE TO IS : 2102 / ISO : 2768</div><div>TOL. CLS.</div><div>अनुमोदित उ.मु.वि.अ.</div><div>APPROVED DYCEE</div><div>SYAMA PRASAD PATRA</div><div><div>Digitally signed by SYAMA PRASAD PATRA DN: cn=SYAMA PRASAD PATRA, o=Chittaranjan Locomotive Works, ou=Chittaranjan Locomotive Works, email=Syama.Pat@clw.co.in, c=IN, Date: 2021.08.15 13:44:39 +05'30'</div></div></div>													<div>दिनांक</div> <div>DATE</div> <div>22-09-20</div>		<div>रेखिक अनुपात</div> <div>SCALE</div> <div>1:2</div>		<div>वर्णन</div> <div>DESCRIPTION</div>		<div>वर्णन</div> <div>DESCRIPTION</div>	
<div><div>पदांक</div><div>GRADE NO.</div><div>सं1</div><div>N1</div><div>सं2</div><div>N2</div><div>सं3</div><div>N3</div><div>सं4</div><div>N4</div><div>सं5</div><div>N5</div><div>सं6</div><div>N6</div><div>सं7</div><div>N7</div><div>सं8</div><div>N8</div><div>सं9</div><div>N9</div><div>सं10</div><div>N10</div><div>सं11</div><div>N11</div><div>सं12</div><div>N12</div></div>													<div>संदर्भ / REF.</div> <div>182-00424 ALT.-0</div>		<div>चिन्ह</div> <div>SYMBOL</div> <div></div>		<div>वर्णन</div> <div>DESCRIPTION</div>		<div>वर्णन</div> <div>DESCRIPTION</div>	
<div><div>Rz</div><div>0.16-0.3</div><div>0.5-0.7</div><div>0.9-1.1</div><div>1.5-2.0</div><div>2.5-3.8</div><div>5.0-6.3</div><div>9.0-12</div><div>16-25</div><div>30-40</div><div>50-63</div><div>75-100</div><div>160-250</div></div>													<div>वर्णन</div> <div>DESCRIPTION</div>		<div>वर्णन</div> <div>DESCRIPTION</div>		<div>वर्णन</div> <div>DESCRIPTION</div>		<div>वर्णन</div> <div>DESCRIPTION</div>	
<div><div>Ra μm</div><div>0.025</div><div>0.05</div><div>0.1</div><div>0.2</div><div>0.4</div><div>0.8</div><div>1.6</div><div>3.2</div><div>6.3</div><div>12.5</div><div>25</div><div>50</div></div>													<div>वर्णन</div> <div>DESCRIPTION</div>		<div>वर्णन</div> <div>DESCRIPTION</div>		<div>वर्णन</div> <div>DESCRIPTION</div>		<div>वर्णन</div> <div>DESCRIPTION</div>	
<div><div>चिन्ह</div><div>SYMBOL</div><div></div></div>													<div>वर्णन</div> <div>DESCRIPTION</div>		<div>वर्णन</div> <div>DESCRIPTION</div>		<div>वर्णन</div> <div>DESCRIPTION</div>		<div>वर्णन</div> <div>DESCRIPTION</div>	
<div><div>परिवर्तन संख्या</div><div>ALTERATION. NO.</div><div>3</div></div>													<div>वर्णन</div> <div>DESCRIPTION</div>		<div>वर्णन</div> <div>DESCRIPTION</div>		<div>वर्णन</div> <div>DESCRIPTION</div>		<div>वर्णन</div> <div>DESCRIPTION</div>	
<div><div>पृष्ठ</div><div>SHEET</div><div>1 OF 1</div></div>													<div>वर्णन</div> <div>DESCRIPTION</div>		<div>वर्णन</div> <div>DESCRIPTION</div>		<div>वर्णन</div> <div>DESCRIPTION</div>		<div>वर्णन</div> <div>DESCRIPTION</div>	
<div><div>A4</div></div>													<div>वर्णन</div> <div>DESCRIPTION</div>		<div>वर्णन</div> <div>DESCRIPTION</div>		<div>वर्णन</div> <div>DESCRIPTION</div>		<div>वर्णन</div> <div>DESCRIPTION</div>	