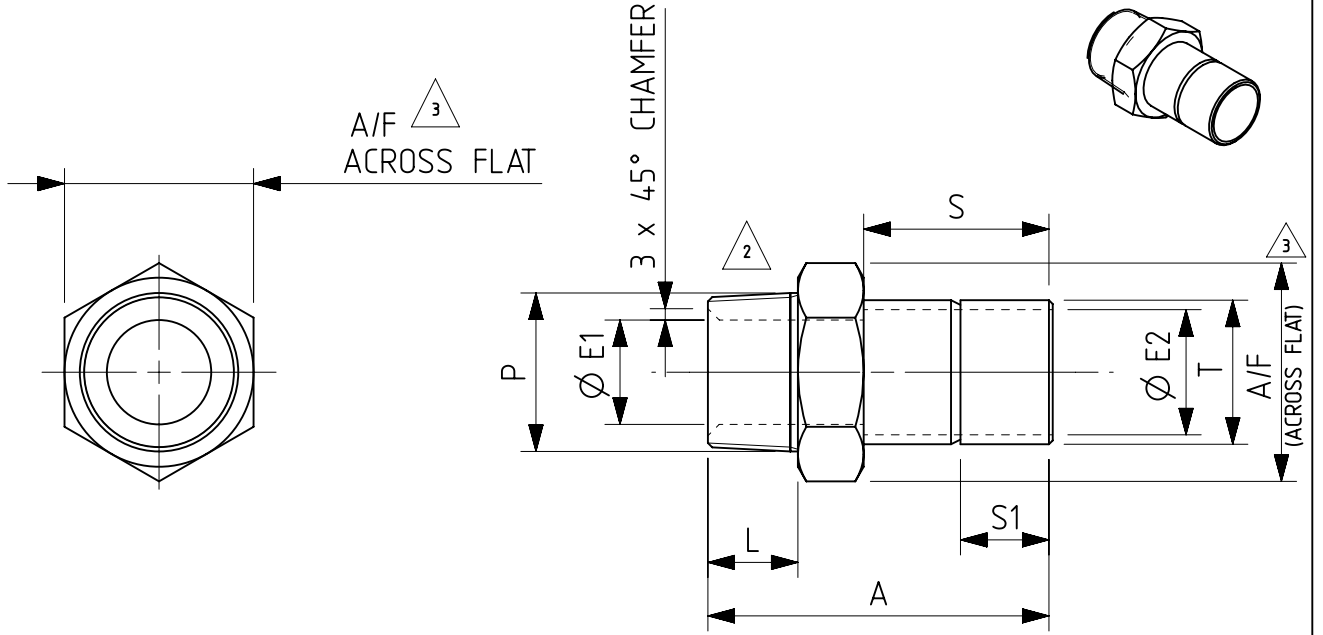




- | SL. NO. | 'P' THREAD NPT | 'P ₁ ' 150 PARALLEL | L (MIN.) | ØE MIN. OPENING | C MIN. | A/F | B |
|---------|----------------|--------------------------------|-----------------------------------|------------------------------------|----------------------------------|----------------------------------|--------------------------------|
| 1. | 1" | 1" | 23.8- ⁺⁵ ₋₈ | ⁺⁵ ₋₀ 22.3-0 | ⁺¹ ₋₀ 43-0 | ⁺¹ ₋₀ 41-0 | ⁺¹ ₋₀ 51 |

[illegible]

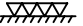
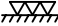
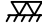

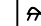



SL. NO.	'T' TUBE O.D.	'P' (THREAD TAPER MALE TO ISO 7/1)	A	L	Ø E1	Ø E2	A/F	S	S1
1	1-1/2"	1-1/4"	91.2	23.8	27.6	33.1	50	50	15.7
2	1"	1"	66.0	23.8	16	20.4	36	30	13
3	1"	3/4"	58.7	19.1	16	20.4	28.5	30	13
4	1-1/2"	1"	92.1	23.1	27.6	33.1	50	50	15.7

NOTES:-


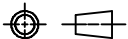
1. REMOVE ALL BURRS & SHARP EDGES.
2. BODY & BACK NUT ARE TO BE ZINC PLATED (10µ)/PASSIVATED.
3. ALL DIMENSIONS ARE IN mm EXCEPT OTHERWISE STATED.
4. GENERAL TOLERANCE ON DIMENSIONS:
 - (a) BELOW 25mm $\pm \begin{smallmatrix} 0.5 \\ 0 \end{smallmatrix}$
 - (b) ABOVE 25mm $\pm \begin{smallmatrix} 1.0 \\ 0 \end{smallmatrix}$ EXCEPT T.P.
5. ISO 7/1 & ISO 228/1 FOR TAPER AND PARALLEL THREADS RESPECTIVELY.

ORIGINAL SUPPLIER-SWAGELOK/USA
USED FOR LOCO - WAG-9 & WAP-5

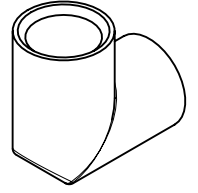
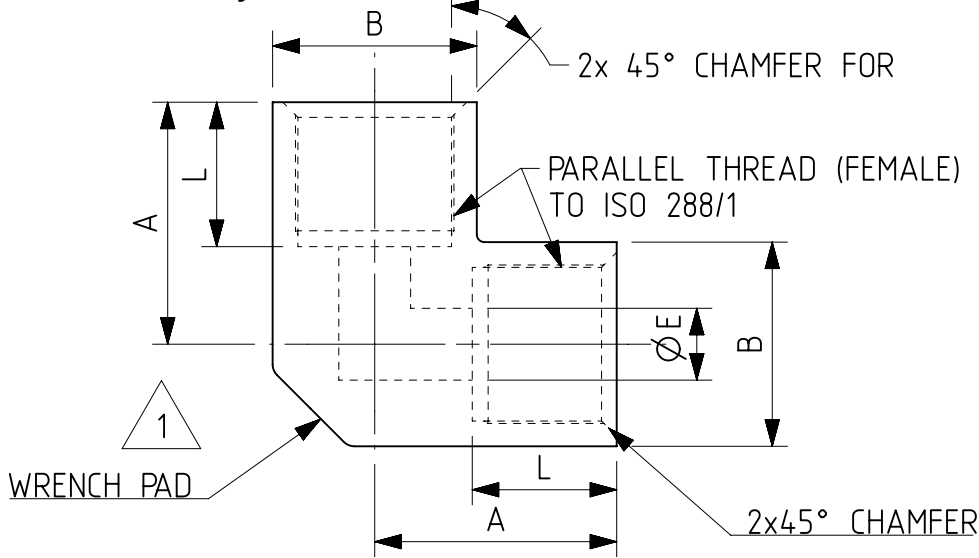
5		REDRAWN IN NX WITH 3RD ANGLE	27-08-09									
4	DY.CEE/P ROJ/CON	ITEM 4 ADDED FOR CCB BREAK SYSTEM	17-01-14									
3	AME/D&D -II	DIMENSION A/F (ACROSS FLAT) WAS "F". DIMENSION 50, 36 & 28.5 WERE 2-1/2", 1-3/8", 1-1/16" RESPECTIVELY.	28-01-03									
2	AME/D&D -II	PREVIOUS VIEW & TABLE REF NOS 2 & 3 DELETED. REF NO. 1 WAS NEW VIEW & TABLE, NOTE 3 TO 5 ADDED.	07-09-01									
1	AME/D&D	THD. WAS BSP PASSIVATED ADDED.	19-08-98									
परिवर्तन संख्या ALT.NO.	प्राधिकार AUTHY	वर्णन DESCRIPTION	दिनांक आधार DATED INITIAL									
सतह - रूखाता का मान या. मा. 3073 / अ. मा. सं. 1302		अनिर्दिष्ट सद्य - सीमा या. मा. : 2102 / अ. मा. सं. : 2768 UNSPECIFIED TOLERANCE TO IS : 2102 / ISO : 2768	TOL. CLS.									
SURFACE ROUGHNESS VALUE TO IS:3073 / ISO:1302		धातु-रेखन चिन्ह या. मा. : 813 / अ. मा. सं. : 2553 WELDING SYMBOLS TO IS:813 / ISO:2553										
पदांक GRADE NO.	सं1 N1	सं2 N2	सं3 N3	सं4 N4	सं5 N5	सं6 N6	सं7 N7	सं8 N8	सं9 N9	सं10 N10	सं11 N11	सं12 N12
Rz	0.16-0.3	0.5-0.7	0.9-1.1	1.5-2.0	2.5-3.8	5.0-6.3	9.0-12	16-25	30-40	50-63	75-100	160-250
Ra μm	0.025	0.05	0.1	0.2	0.4	0.8	1.6	3.2	6.3	12.5	25	50
चिन्ह SYMBOL												

2

अधिकृत DGN	
जॉचा व.अ.अ.	ALOK KUMAR CHAKRA BORTY
CHD SSE	
समीक्षित स.वि.अ. / व.वि.अ.	Pradeep Khatang
अनुमोदित स.वि.अ.	ARUP KUMAR MITRA
दिनांक DATE	24-09-20
रैखिक अनुपात SCALE	1:1
संदर्भ / REF.	182-00525
ALT.	

		चितारंजन रेलइंजन कारखाना CHITTARANJAN LOCOMOTIVE WORKS, INDIA	
पदार्थ MATL	STEEL	प्रति भार कि. ग्रा. WT. EACH IN KG	
विशिष्ट SPECN	ASTM A108		
वर्णन DESCRIPTION	MALE ADAPTER		
आरेखण संख्या DRAWING NO.	1209-18.406-021		
	परिवर्तन संख्या ALTERATION. NO.	5	पृष्ठ SHEET 1 OF 1
			A4

4983519/2026/O/o Dy.CEE/DKAE/CLW



NOTE:


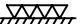

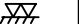
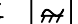
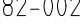
1. REMOVE ALL BURRS AND SHARP EDGES.
2. TO BE Zn. PLATED (10/4)/PASSIVED.
3. ALL DIMENSIONS ARE IN mm. EXCEPT OTHERWISE STATED.
4. ISO 7/1 & ISO 228/1 FOR TAPER AND PARALLEL THREADS RESPECTIVELY.
5. ELBOWS ARE TO BE MACHINED FROM FORGED BLANK AND NOT TO BE CAST.
6. GENERAL TOLERANCE:

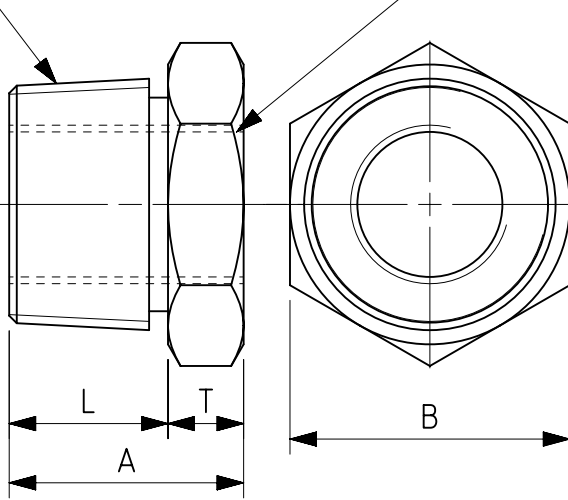
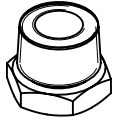
a) BELOW 25mm: $^{+0.5}_{-0}$, b) ABOVE 25mm: $^{+1.0}_{-0}$

USED FOR LOCO WAG-9, WAP-5

REF. NO.	NOMINAL SIZE mm.	'B' $^{+0.5}_{-0}$ MINIMUM OUTSIDE DIA. mm.	'A' $^{+0.5}_{-0}$ MINIMUM LENGTH CENTRE TO FACE mm.	L (MIN.)	Ø E MINIMUM OPENING
1	15(1/2")	27.0	32.0	19.1	9.5
2	25(1")	39.5	43.0	23.8	22.3
3	8(1/4")	18.5	32.0	14.2	4.8
4	20(3/4")	32.5	35.0	19.1	15.9

4			ELBOW F&F FITTING	-	STEEL	ASTM A108	
3			ELBOW F&F FITTING	-	STEEL	ASTM A108	
2			ELBOW F&F FITTING	-	STEEL	ASTM A108	
1			ELBOW F&F FITTING	-	STEEL	ASTM A108	
निर्देश संख्या	लागत एवं वितरण संख्या	अंग आरेखण संख्या	वर्णन	मात्रा	पदार्थ	विशिष्ट	प्रति भार कि. ग्रा.
REF. NO.	C&D NO.	PART DRG. NO.	DESCRIPTION	QTY.	MATL	SPECN	WT. EACH IN K.G.

3		REDRAWN IN NX WITH 3RD ANGLE PROJECTION.	24-05-09	अधिकृत			चितरंजन रेलइंजन कारखाना																	
2	DY CEE/D1	WAP-5 ADDED		DGN			CHITTARANJAN LOCOMOTIVE WORKS, INDIA																	
1	AME/D&D	VIEW MODIFIED. NOTE:3 TO 6 ADDED. NO./LOCOS COLUMN DELETED. DIMENSION 32 WAS 22.	30-07-04	जॉचा व.अ.अ.	SUBHAN KAR KUMBH AKAR																			
परिवर्तन संख्या	प्राधिकार	वर्णन	दिनांकित बाधक	समीक्षित स.वि.अ. / व.वि.अ.	Pradeep Khatana	पदार्थ	प्रति भार कि. ग्रा.																	
ALT.NO.	AUTHY	DESCRIPTION	INITIAL	REVIEWED AEE / SEE		MATL	WT. EACH IN KG																	
सतह - रूखाता का मान या. मा. 3073 / अ. मा. सं. 1302					अनुमोदित स.वि.अ.	विशिष्ट																		
SURFACE ROUGHNESS VALUE TO IS:3073 / ISO:1302					APPROVED DYCEE	ASTM A108																		
अतिरिष्ट सतह - सीमा या. मा. : 2102 / अ. मा. सं. : 2768					ARUP KUMAR MITRA	वर्णन																		
UNSPECIFIED TOLERANCE TO IS : 2102 / ISO : 2768						DESCRIPTION																		
धातु-वेल्डन चिन्ह या. मा. : 813 / अ. मा. सं. : 2553					DATE	ELBOW F & F FITTING																		
WELDING SYMBOLS TO IS:813 / ISO:2553					23-09-20	परिवर्तन संख्या																		
पदांक	सं1	सं2	सं3	सं4	सं5	सं6	सं7	सं8	सं9	सं10	सं11	सं12	रैखिक अनुपात	SCALE	1:1	आरेखण संख्या								
GRADE NO.	N1	N2	N3	N4	N5	N6	N7	N8	N9	N10	N11	N12				DRAWING NO.								
Rz	0.16-0.3	0.5-0.7	0.9-1.1	1.5-2.0	2.5-3.8	5.0-6.3	9.0-12	16-25	30-40	50-63	75-100	160-250				1209-18.406-073								
Ra μ m	0.025	0.05	0.1	0.2	0.4	0.8	1.6	3.2	6.3	12.5	25	50												
चिन्ह																संदर्भ / REF.								
SYMBOL																182-00273 ALT.-0								
																				परिवर्तन संख्या				
																				ALTERATION. NO.				
																				2				
																				पृष्ठ				
																				1 OF 1				
																				A4				

EXTERNAL MALE
ISO 7/1 TAPER THREADINTERNAL FEMALE
ISO 228/1 PARALLEL THREAD

NOTES:

1. REMOVE ALL BURRS & SHARP EDGES.
2. TO BE ZINC PLATED (10 μ)/PASSIVATED.
3. ALL DIMENSIONS ARE IN mm EXCEPT OTHERWISE STATED.
4. REF. NO.2 IS APPLICABLE FOR WAP / 5 & REF. NO.1 & 2 ARE FOR WAG/9 LOCO ONLY.
5. ISO 7/1 & ISO 228/1 FOR TAPER AND PARALLEL THREADS RESPECTIVELY.

1

SL.NO.	NOMINAL SIZE TAPER x PARALLEL	L (MIN)	T (MIN)	A (MIN)	B A/FLAT
1	1" x 1/2"	21.0	10 ⁺² / ₋₀	31.0 ⁺⁵ / ₋₀	37 ⁺⁵ / ₋₀
2	1 1/4" x 3/4"	24.0	11 ⁺² / ₋₀	35.0 ⁺⁵ / ₋₀	47 ⁺⁵ / ₋₀
3	1 1/4" x 1"	24.0	11 ⁺² / ₋₀	35.0 ⁺⁵ / ₋₀	47 ⁺⁵ / ₋₀
4	3/4" x 1/2"	19.0	10 ⁺² / ₋₀	29 ⁺⁵ / ₋₀	27 ⁺⁵ / ₋₀
5	1/2" x 1"	24.0	13 ⁺² / ₋₀	37 ⁺⁵ / ₋₀	52 ⁺¹⁰ / ₋₀
6	1" x 3/4"	21.0	10 ⁺² / ₋₀	31 ⁺⁵ / ₋₀	37 ⁺⁵ / ₋₀
7	1/2" x 3/8"	17.5	8 ⁺² / ₋₀	25.5 ⁺² / ₋₀	22 ⁺⁵ / ₋₀
8	3/4" x 3/8"	19.0	10 ⁺² / ₋₀	29 ⁺⁵ / ₋₀	27 ⁺⁵ / ₋₀

3

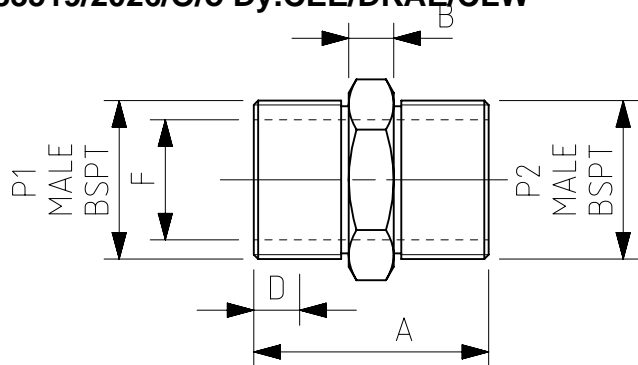
3

USED FOR LOCO WAG-9 / WAP-5

8	/		Reducing Bush	STEEL	ASTM A108	
7	/		Reducing Bush	STEEL	ASTM A108	
6	/		Reducing Bush	STEEL	ASTM A108	
5	/		Reducing Bush	STEEL	ASTM A108	
4	/		Reducing Bush	STEEL	ASTM A108	
3	/		Reducing Bush	STEEL	ASTM A108	
2	/		Reducing Bush	STEEL	ASTM A108	
1	/		Reducing Bush	STEEL	ASTM A108	
निर्देश संख्या	लागत एवं वितरण संख्या	अंग आरेखण संख्या	वर्णन	मात्रा	पदार्थ	विशिष्टि
REF. NO.	C&D NO.	PART DRG. NO.	DESCRIPTION	QTY.	MATL	SPECN
						प्रति भार कि. ग्रा.
						WT. EACH IN K.G.

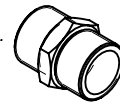
4		REDRAWN IN NX WITH 3RD ANGLE PROJECTION.	25-04-11	अधिकृत		
3	AME/D&D	NOTE 4 DELETED. NOTES, TOLERANCES ON DIMENSIONS, ITEM SL. NOS. 3 TO 8 ADDED.	30-07-01	DGN		
2	AME/D&D	NOTE 4 ADDED	*-11-94	जॉचा व.अ.	SUBHA NKAR KUMBHAKAR	
1	AME/D&D	WAP-5 ADDED. SL. NO. WAS REF. NO. NOTE 3 ADDED. NO/LOCO COLUME DELETED.	*-4-94	CHD SSE	Pradeep Khata	
परिवर्तन संख्या	प्राधिकार	वर्णन	दिनांक	समीक्षित	अनुमोदित	
ALT.NO.	AUTHY	DESCRIPTION	INITIAL	REVIEWED AEE / SEE	APPROVED DYCEE	
सतह - रूखाता का मान मा. मा. 3073 / अ. मा. सं. 1302	अतिरिक्त सद्य - सीमा मा. मा. : 2102 / अ. मा. सं. : 2768	TOL. CLS.	अनुमोदित उ.मु.वि.अ.	ARUP KUMAR MITRA		
SURFACE ROUGHNESS VALUE TO IS:3073 / ISO:1302	धातु-वैलकन चिह्न मा. मा. : 813 / अ. मा. सं. : 2553	WELDING SYMBOLS TO IS:813 / ISO:2553	दिनांक	22-09-20		
पदांक	सं1	सं2	सं3	सं4	सं5	सं6
GRADE NO.	N1	N2	N3	N4	N5	N6
Rz	0.16-0.3	0.5-0.7	0.9-1.1	1.5-2.0	2.5-3.8	5.0-6.3
Ra μ m	0.025	0.05	0.1	0.2	0.4	0.8
चिह्न						
SYMBOL						
संदर्भ / REF.	182-00278	ALT.				
वितरण संख्या	1209-18.406-074					
परिवर्तन संख्या	4					
परिपत्र संख्या	4					
परिपत्र संख्या	4					
परिपत्र संख्या	4					

4983519/2026/O/o Dy.CEE/DKAE/CLW



NOTE:-

1. REMOVE ALL BURRS & SHARP EDGES.
2. TO BE Zn PLATED (10 MICRON)/ PASSIVATED.
3. ALL DIMENSIONS ARE IN mm EXCEPT OTHERWISE STATED. DIMENSIONS ARE INDICATIVE.
4. SL. No. 1 TO 8 ARE APPLICABLE FOR WAG-9 & SL. No. 1 TO 12 ARE APPLICABLE FOR WAP-5 LOCO ONLY.



SL. No.	P1	P2	A (mm)	B (mm)	C (mm)	D (mm)	F (mm)	DUFFIELD CATALOGUE PART No.	
1	1-1/4"	1-1/4"	61.11	11.9	44.45	12.7	31.75	D04/2020	OR SIMILAR
2	3/4"	3/4"	47.62	8.73	28.57	9.52	18.25	D04/1212	"
3	1/2"	3/8"	41.27	7.93	22.22	8.15	10.31	D04/86	"
4	1/2"	1/2"	46.03	7.93	22.22	8.15	13.49	D04/88	"
5	1"	3/4"	52.38	9.52	34.92	10.38	18.25	D04/1612	"
6	3/8"	3/8"	34.92	6.35	19.05	6.35	10.31	D04/66	"
7	1/4"	1/8"	30.16	6.35	15.875	5.99	7.46	D04/42	"
8	3/8"	1/4"	34.92	6.35	19.05	6.35	7.14	D04/64	"
9	3/4"	1/2"	47.62	8.73	28.57	9.82	13.47	D04/128	"
10	1-1/4"	1"						D04/2016	"
11	1/4"	1/4"	34.92	6.35	19.05	5.99	7.14	D04/44	"
12	1"	1"	57.15	9.52	34.92	10.38	23.81	D04/1616	"

1. ALL DIMENSIONS ARE IN mm
2. C&D NO.
3. QTY./LOCO: 1
4. NEXT LEVEL ASSEMBLY DRG. NO.
5. USED FOR LOCO- WAG9, WAP5

REF. NO.	PART DRG. NO.	DESCRIPTION	QTY.	MATL	SPECN	WT. EACH IN K.G.
8		NIPPLE BSPTxBSPT	-	STEEL	ASTM A108	-
7		NIPPLE BSPTxBSPT	-	STEEL	ASTM A108	-
6		NIPPLE BSPTxBSPT	-	STEEL	ASTM A108	-
5		NIPPLE BSPTxBSPT	-	STEEL	ASTM A108	-
4		NIPPLE BSPTxBSPT	-	STEEL	ASTM A108	-
3		NIPPLE BSPTxBSPT	-	STEEL	ASTM A108	-
2		NIPPLE BSPTxBSPT	-	STEEL	ASTM A108	-
1		NIPPLE BSPTxBSPT	10	STEEL	ASTM A108	-
निर्देश संख्या	अंग आरेखण संख्या	वर्णन	मात्रा	पदार्थ	विशिष्टि	प्रति भार कि. ग्रा.
REF. NO.	PART DRG. NO.	DESCRIPTION	QTY.	MATL	SPECN	WT. EACH IN K.G.

4		REDRAWN IN NX WITH 3RD ANGLE PROJECTION.	06-10-09	<div>अधिकृत DGN</div> <div>जॉचा व.अ. CHD SSE</div> <div>समीक्षित स.वि.अ. / व.वि.अ. DATED REVIEWED AEE / SEE</div> <div>अनुमोदित उ.पु.वि.अ. APPROVED DYCEE</div> <div>दिनांक DATE</div> <div>रैखिक अनुपात SCALE</div> <div>संदर्भ / REF. 182-00424</div> <div>ALT. -</div>	<div><div></div><div>चितरंजन रेलइंजन कारखाना CHITTARANJAN LOCOMOTIVE WORKS, INDIA</div></div> <div><div>पदार्थ MATL</div><div>STEEL</div><div>प्रति भार कि. ग्रा. WT. EACH IN KG</div></div> <div><div>विशिष्टि SPECN</div><div>ASTM A108</div></div> <div><div>वर्णन DESCRIPTION</div><div>NIPPLE (BSPT x BSPT)</div></div> <div><div>आरेखण संख्या DRAWING NO.</div><div>1209-18.406-076</div></div> <div><div>परिवर्तन संख्या ALTERATION. NO.</div><div>4</div></div> <div><div>पृष्ठ SHEET</div><div>1 OF 1</div></div> <div>A4</div>							
3	AME/D&D	NOTE 4 ADDED.	19-04-99									
2	AME/D&D	SL. NO. WAS REF. NO. NOTE 3 & WAP-5 ADDED. NO./LOCO COLUMN DELETED.	12-04-99									
1	AME/D&D	QTY. OF REF. NO. 4 WAS 14	14-08-98									
परिवर्तन संख्या ALT.NO.	प्राधिकार AUTHY	वर्णन DESCRIPTION	दिनांक INITIAL									
सतह - रूखाता का मान मा. मा. 3073 / अ. मा. सं. 1302 SURFACE ROUGHNESS VALUE TO IS:3073 / ISO:1302		अतिरिक्त सद्य - सीमा मा. मा. : 2102 / अ. मा. सं. : 2768 UNSPECIFIED TOLERANCE TO IS : 2102 / ISO : 2768 धातु-वेल्डन चिन्ह मा. मा. : 813 / अ. मा. सं. : 2553 WELDING SYMBOLS TO IS:813 / ISO:2553	TOL. CLS.									
पदांक GRADE NO.	सं1 N1	सं2 N2	सं3 N3	सं4 N4	सं5 N5	सं6 N6	सं7 N7	सं8 N8	सं9 N9	सं10 N10	सं11 N11	सं12 N12
Rz	0.16-0.3	0.5-0.7	0.9-1.1	1.5-2.0	2.5-3.8	5.0-6.3	9.0-12	16-25	30-40	50-63	75-100	160-250
Ra μm	0.025	0.05	0.1	0.2	0.4	0.8	1.6	3.2	6.3	12.5	25	50
चिन्ह SYMBOL												