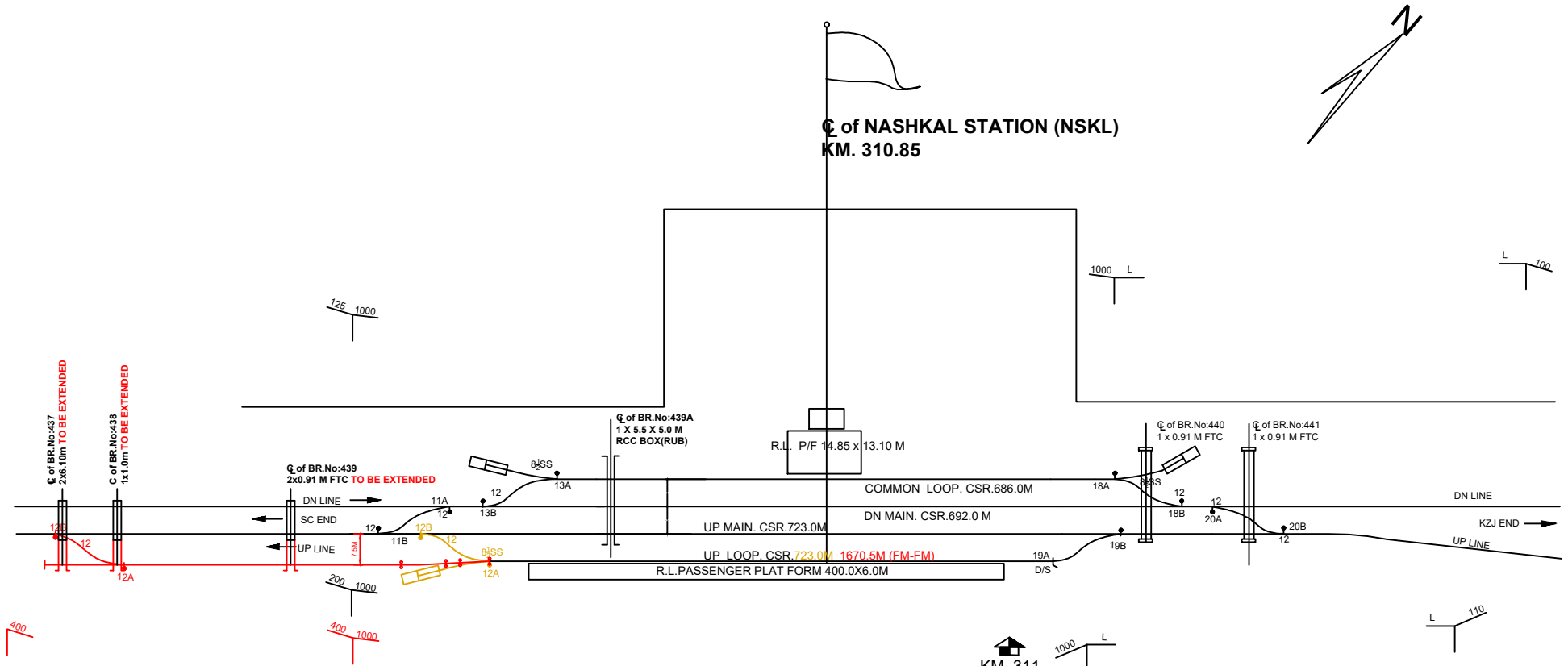


Q of NASHKAL STATION (NSKL)
KM. 310.85



Route	1 in 12			1 in 8.5			D/S		
	Main line	Other than Main line	Total	Main line	Other than Main line	Total	Main line	Other than Main line	Total
B	11A&B		8	12A		3		19A	1
	12B			13A					
	13B			18A					
	18B								
	19B								
	20A&B								

KM. 311

S.C.RAILWAY
SECUNDERABAD DIVISION
NASHKAL(NSKL)

KM. 310.85
SC - KZJ SECTION

Pro.Longer Loop Line

NOT TO SCALE

DEN/Central/SC