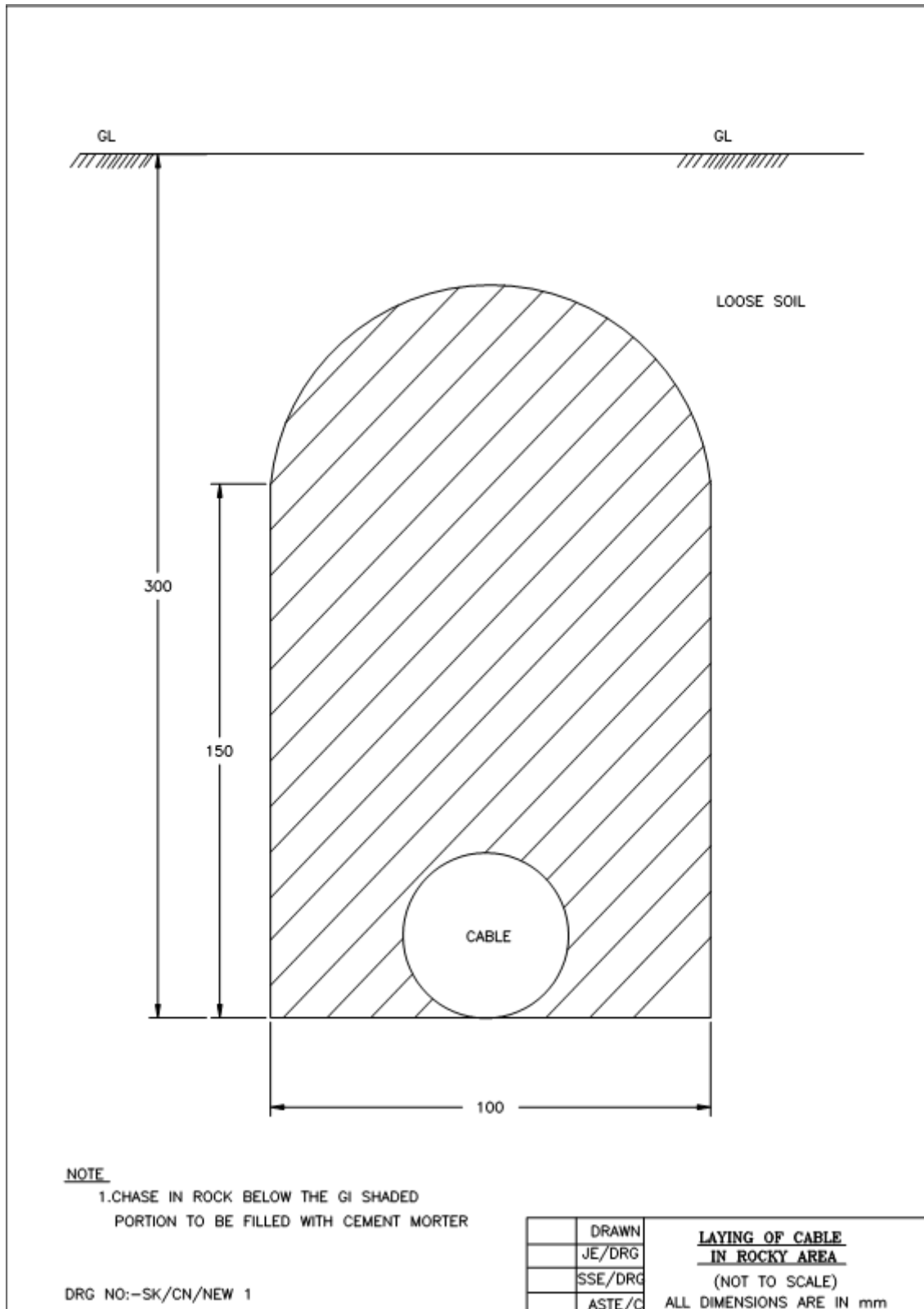
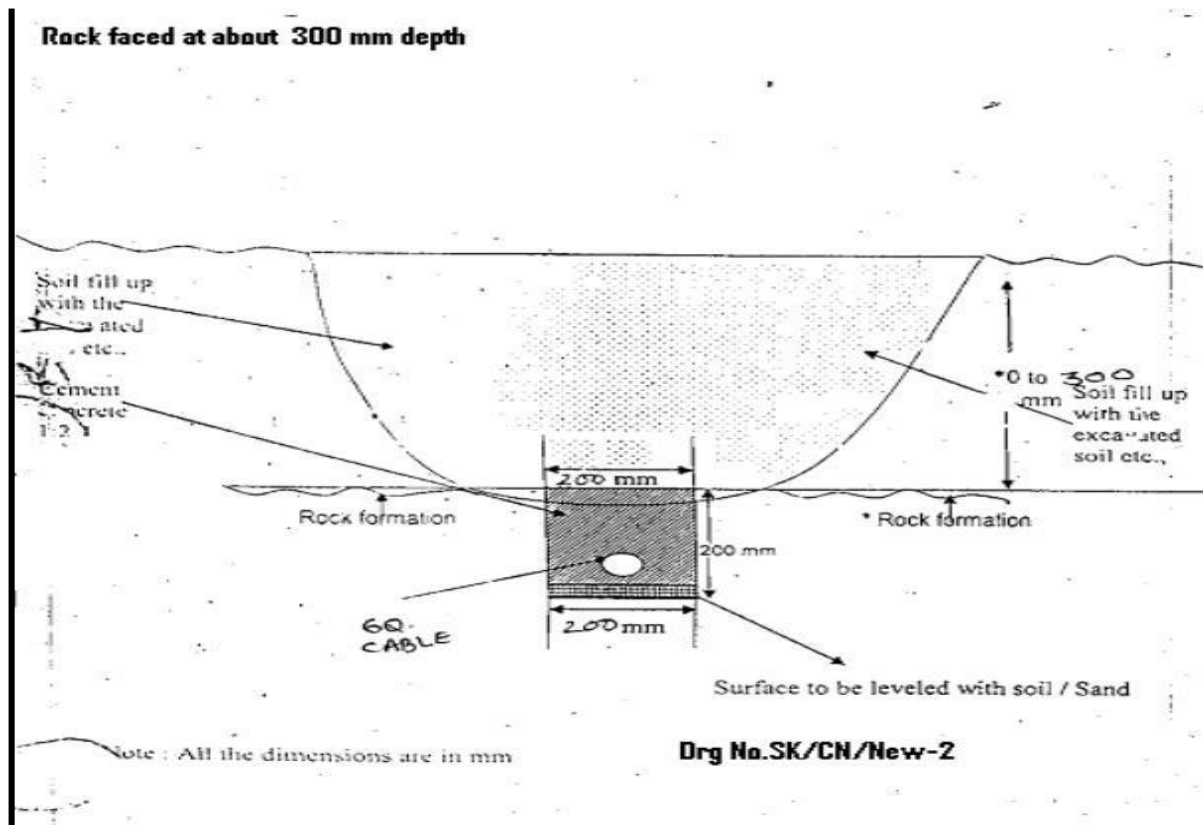


A. S&T Drawings and OEM form:

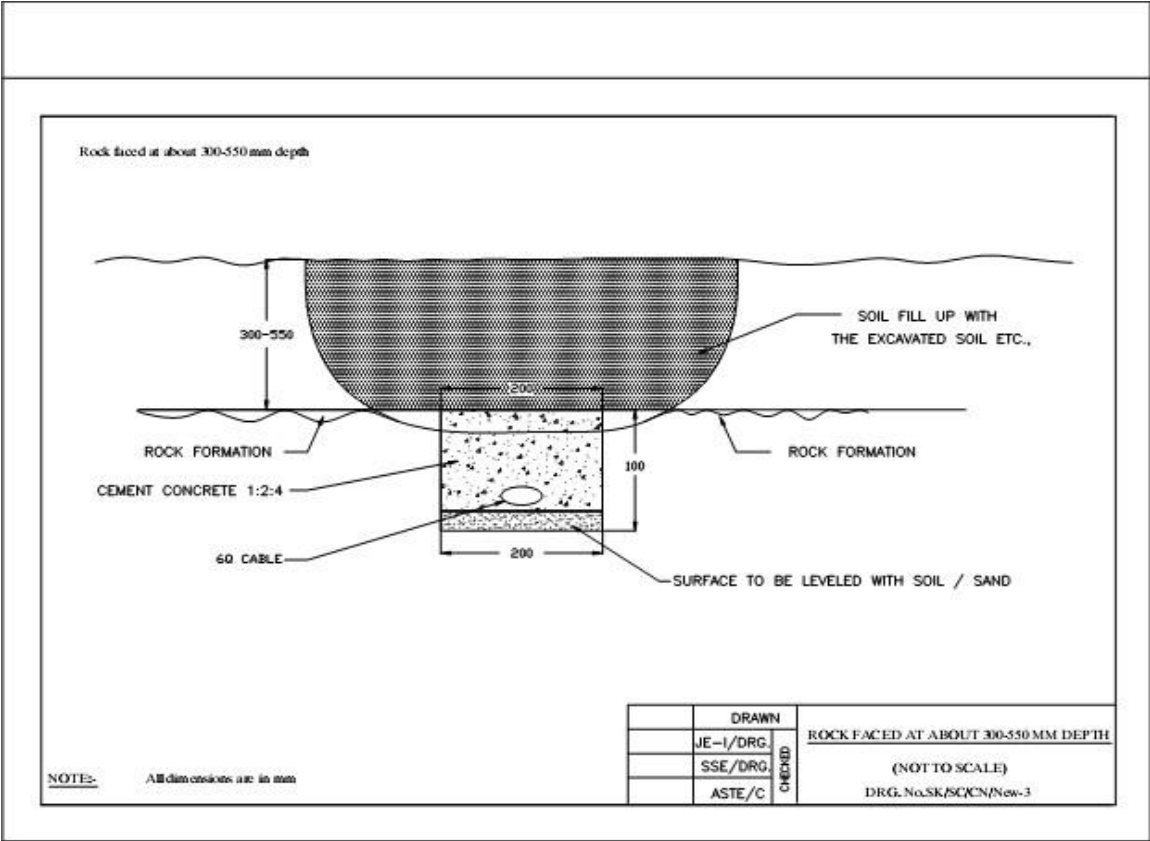
ANNEXURE-A



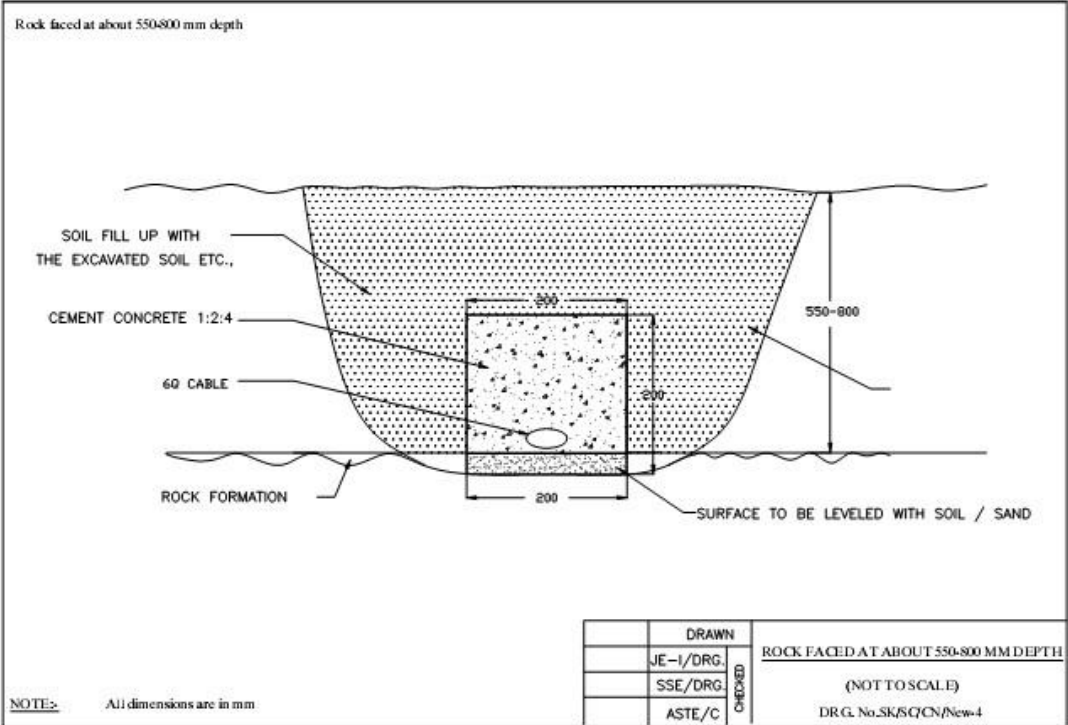
ANNEXURE-2A



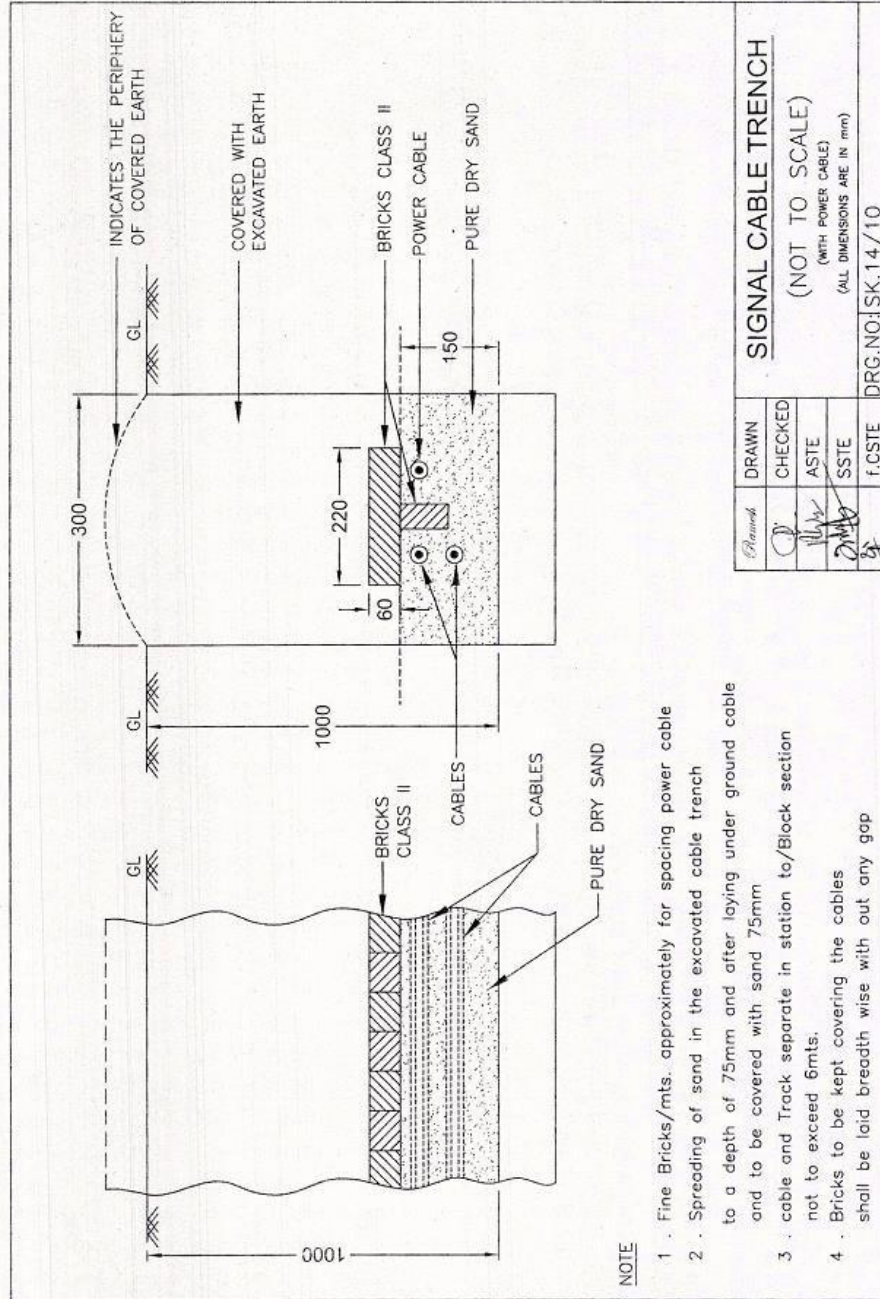
ANNEXURE-2B



ANNEXURE-2C

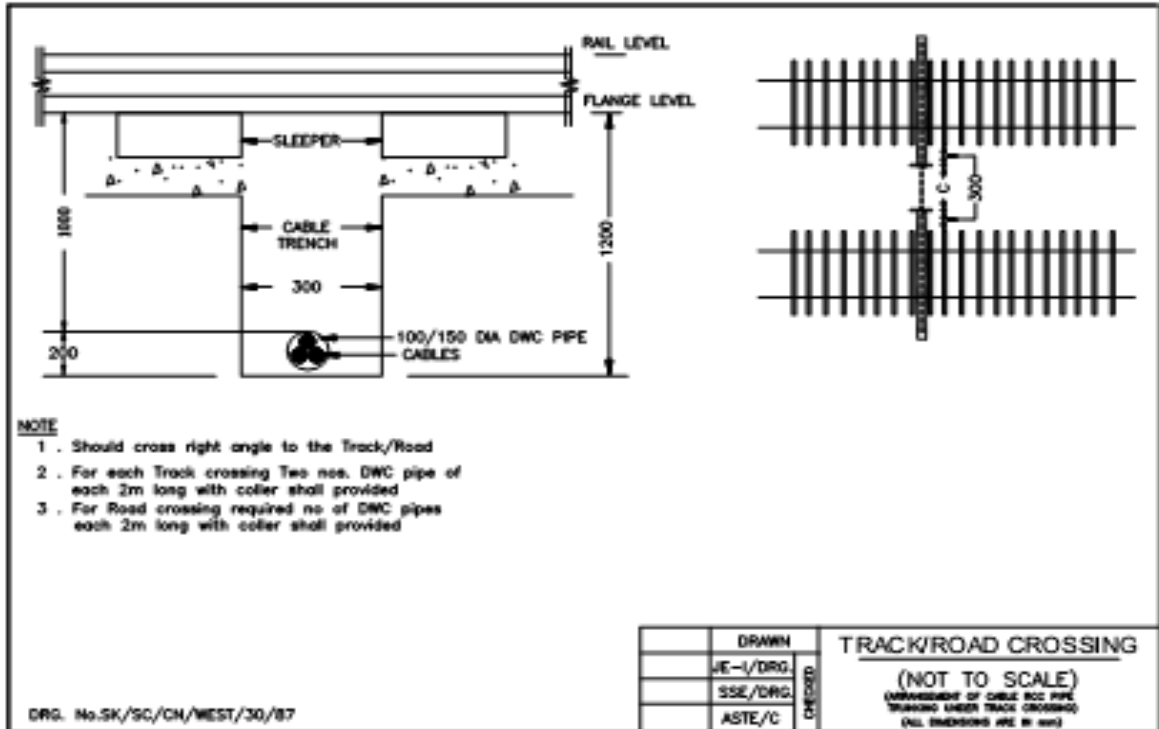


ANNEXURE 2D

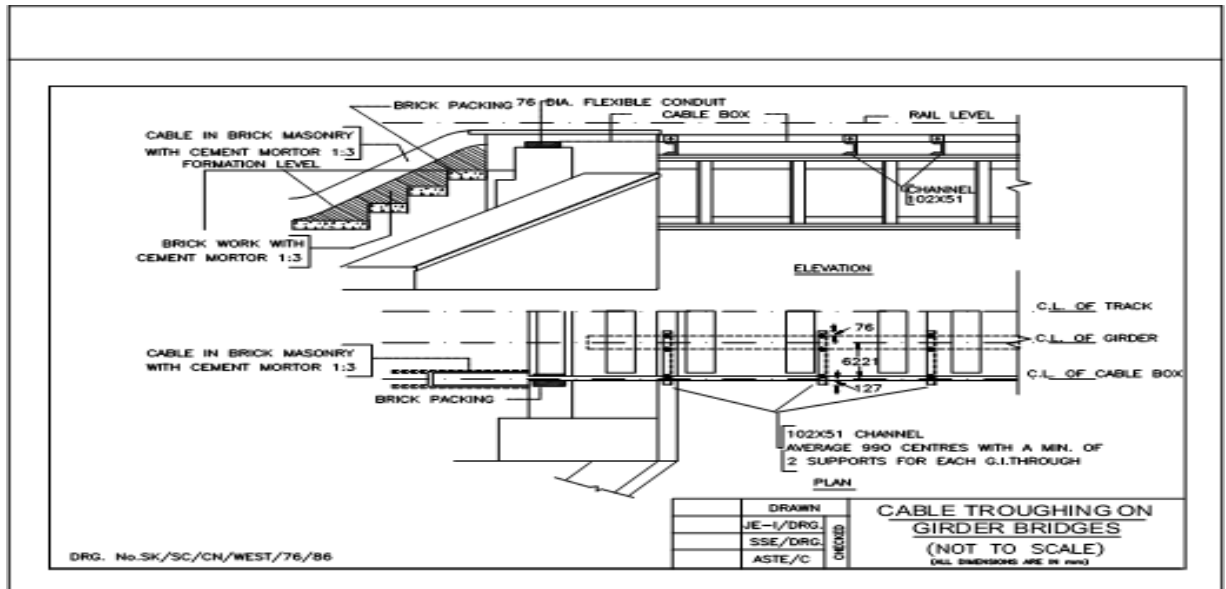


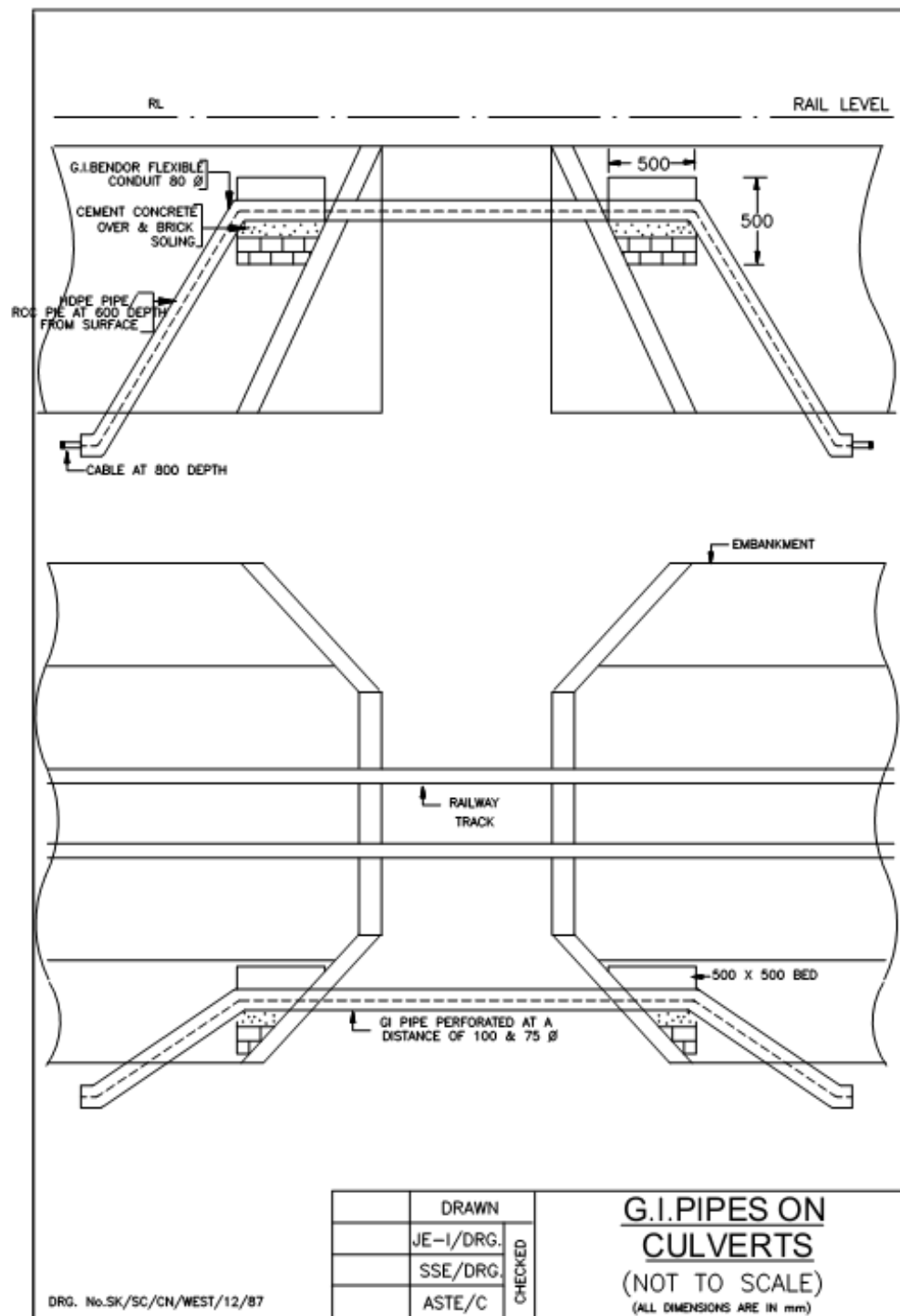
SIGNAL CABLE TRENCH			
DRAWN	CHECKED	(NOT TO SCALE)	
<i>Plamuch</i>	<i>ASTE</i>	(WITH POWER CABLE)	
	<i>SSTE</i>	(ALL DIMENSIONS ARE IN mm)	
	<i>f.CSTE</i>	DRG.NO: SK.14/10	

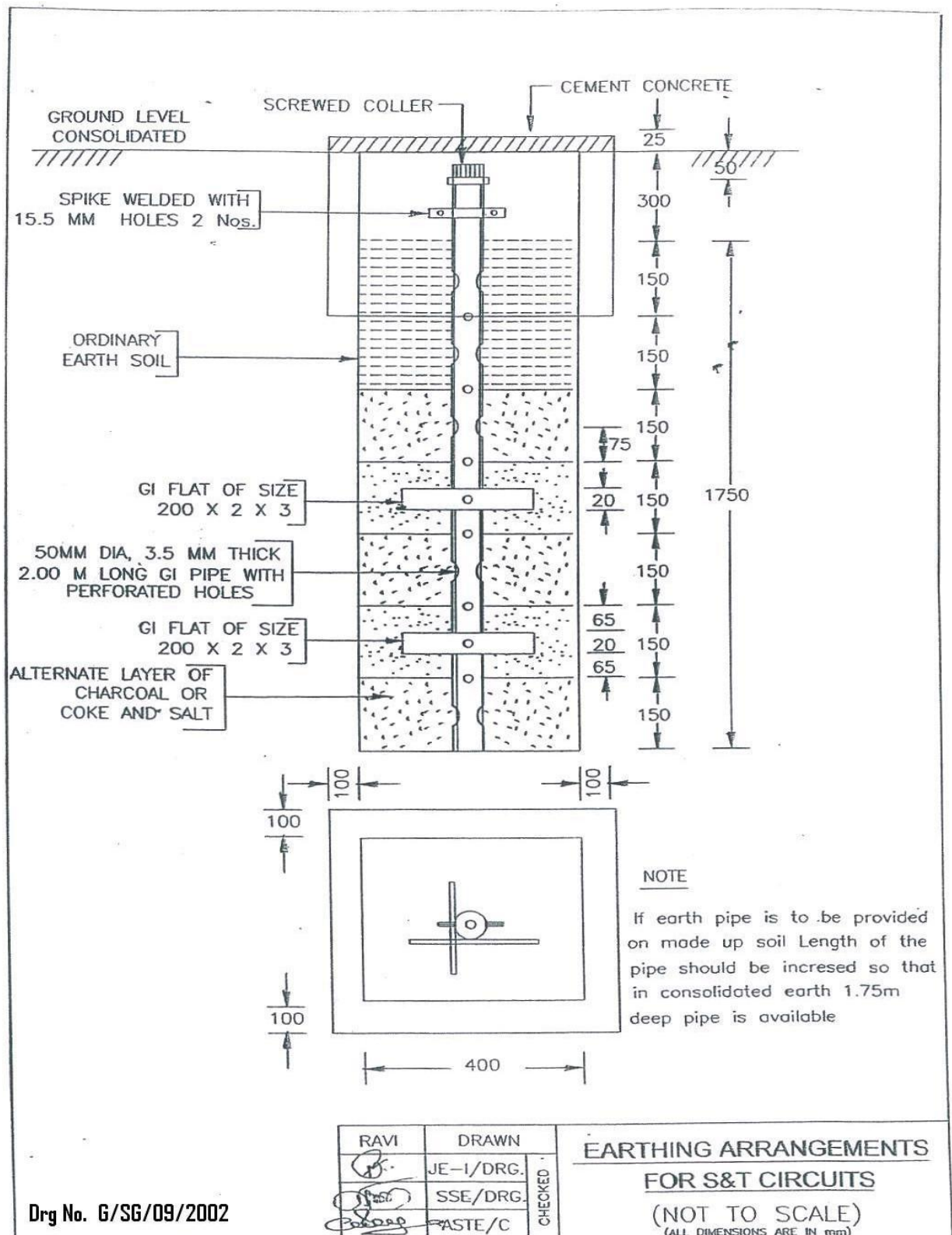
ANNEXURE-3

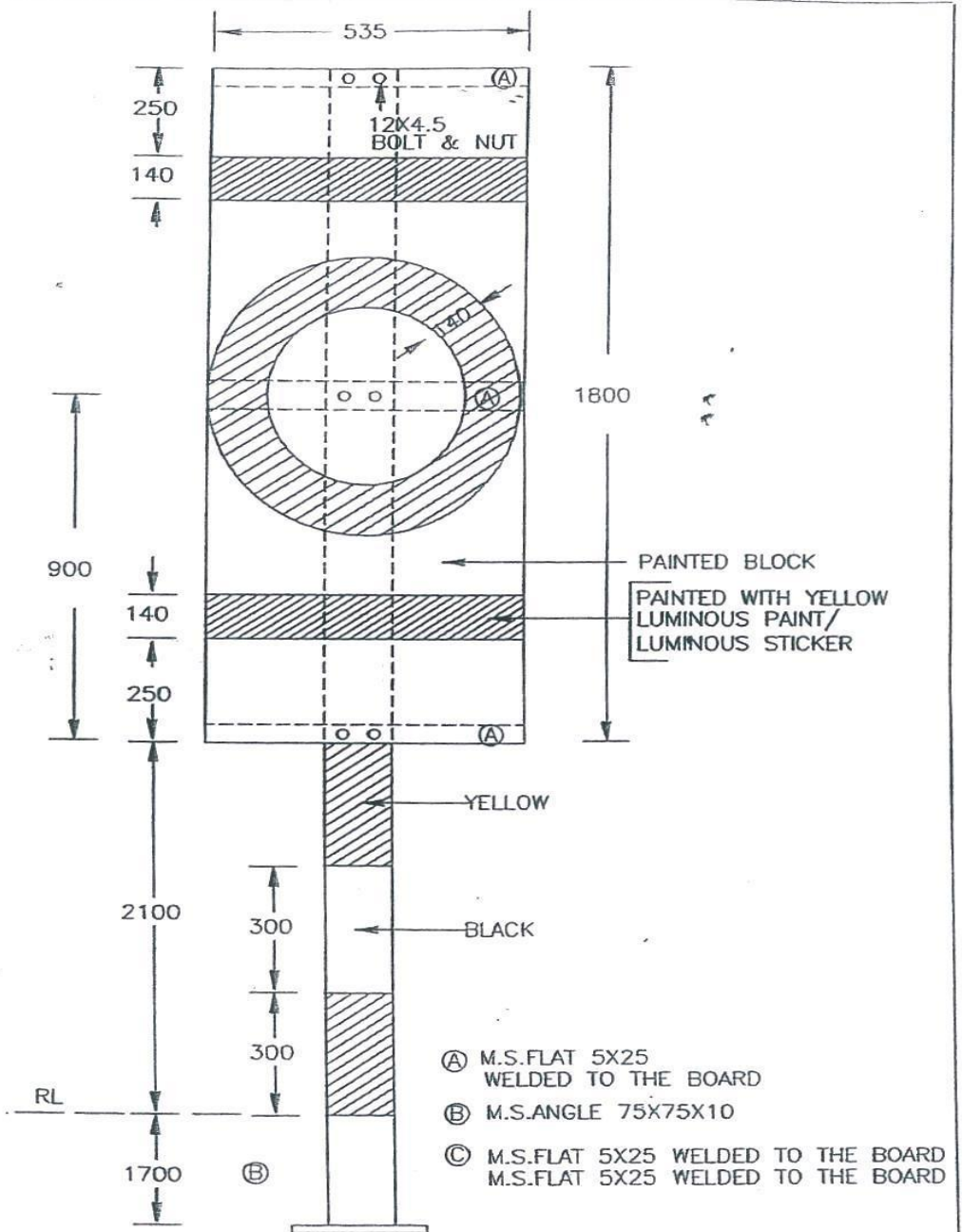


ANNEXURE-4







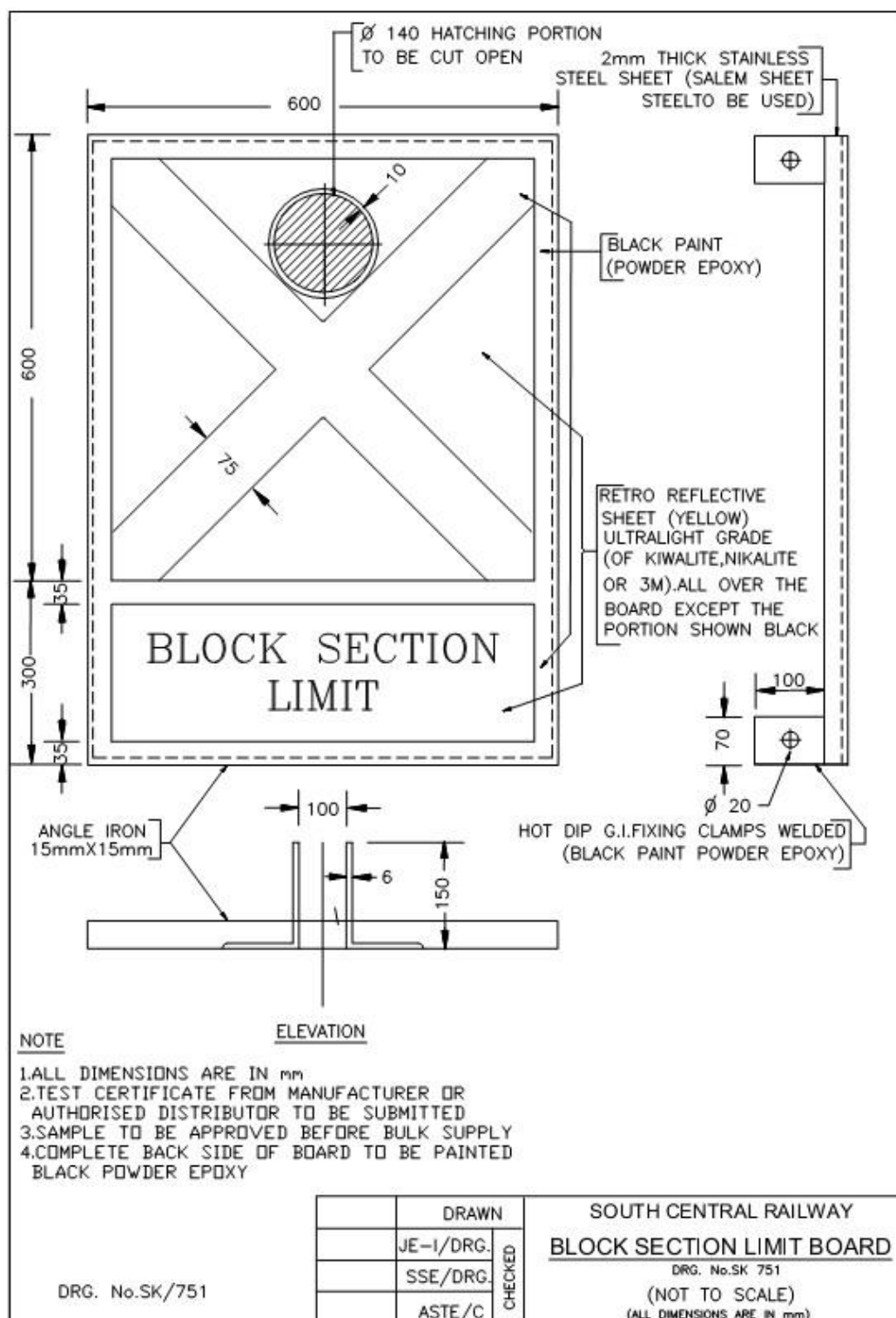
**NOTE**

1. CHASE IN ROCK BELOW THE GI SHADED PORTION TO BE FILLED WITH CEMENT MORTAR

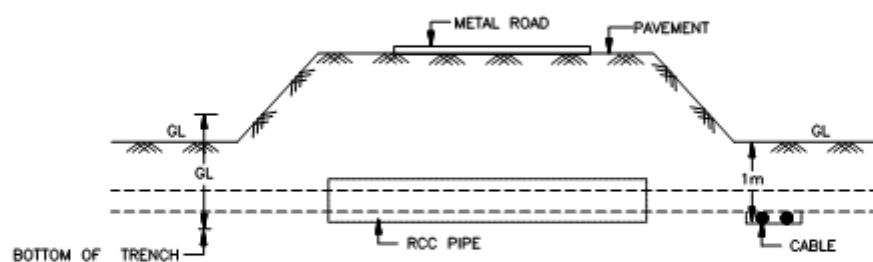
Drg no. SK/13/89

RAVI	DRAWN	CHECKED
<i>[Signature]</i>	JE-I/DRG.	
<i>[Signature]</i>	SSE/DRG.	
<i>[Signature]</i>	ASTE/C	

SIGHTING BOARD
(FOR GOODS TRAIN)
 (NOT TO SCALE)
 (ALL DIMENSIONS ARE IN mm)



ANNEXURE-9

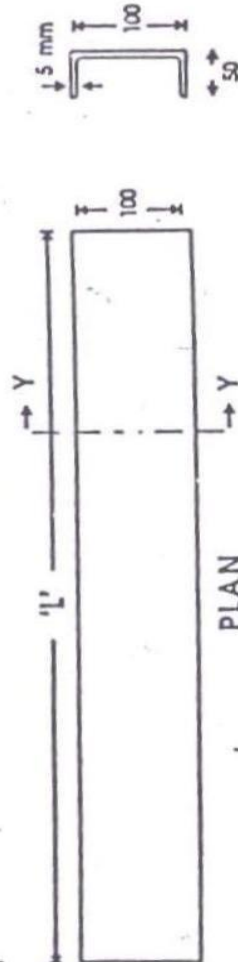


NOTE:-

"A" DEPTH WILL BE 20m MAX OR OTHERWISE
WILL BE DECIDED BY THE ENGINEERS AT SITE

DRG. No.SK/SC/CN/WEST/13/87

	DRAWN	CHECKED	ARRANGEMENT OF RCC PIPE TRUNKING UNDER METAL ROADS (NOT TO SCALE)
	JE-I/DRG.		
	SSE/DRG.		
	ASTE/C		

SECTION ON YV

PLAN

HOLES TO SUIT

HOLES TO SUIT
16mm DIA J BOLTS

TOP FLANGE

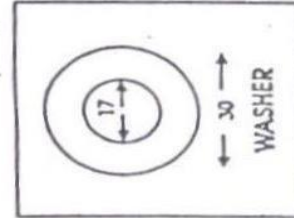
TRUE COPY

LENGTH OF CHANNEL WILL BE DECIDED
ACCORDING TO WIDTH BG. GIRDER BY
ENGINEER-IN-CHARGE.

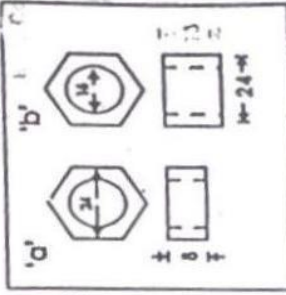
WEIGHT OF CHANNEL 9.2 Kg./ PER METER
APPROX.

CHANNEL TO BE SUPPLIED WITH 2 COATS
OF PRIMER REDOXIDE.

AN ARROW TO BE PUNCHED ON THE TOP OF
'J' BOLT TO INDICATE DIRECTION OF BEND.

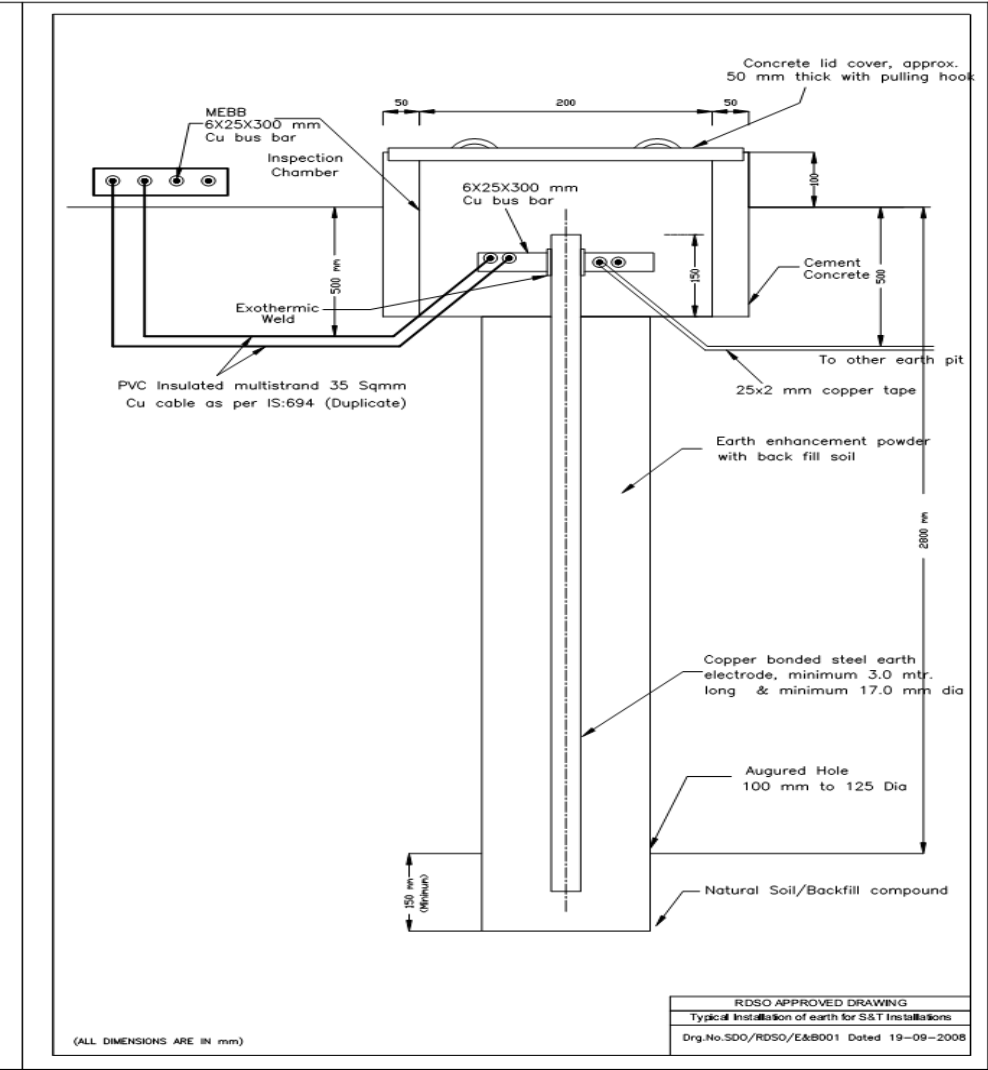


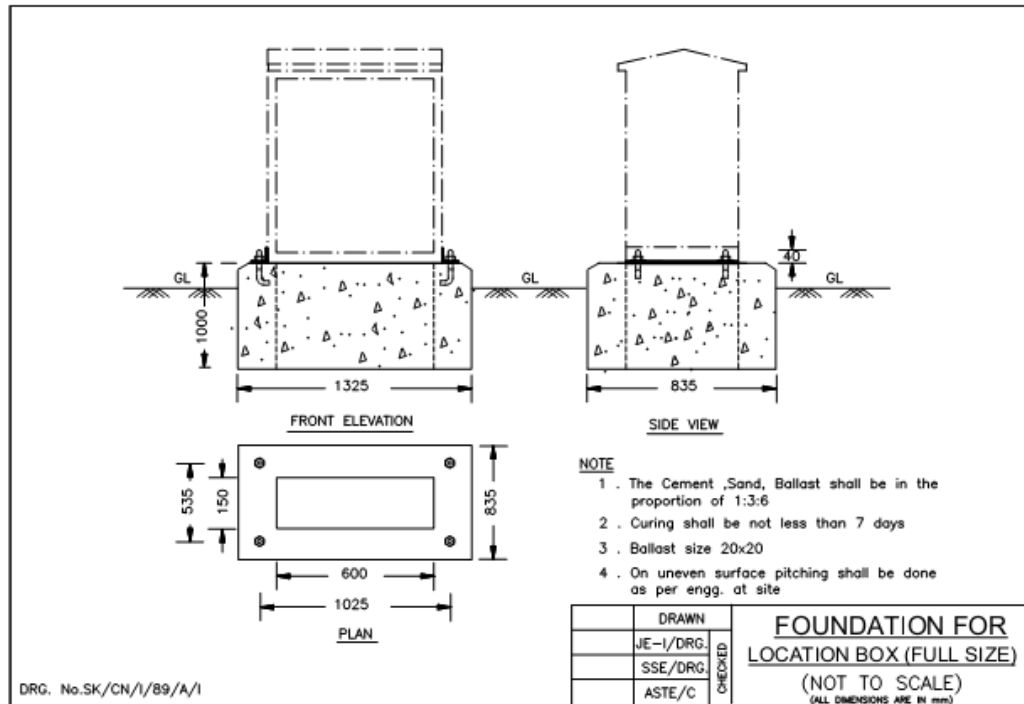
THIS EDGE TO
FLANGED FOR
BRIDGE GIRDER
GRIP

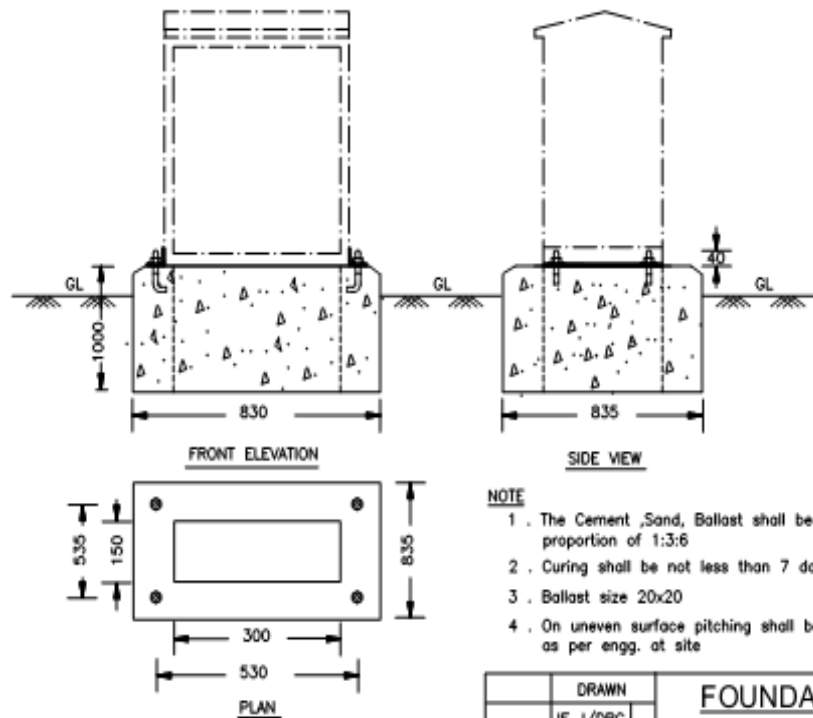


DRG. NO. S&T / RE / 78 / 2 / 76	MILD STEEL CHANNEL FOR TROUGH FIXING		PG. 1 of 2	D/L 20-5-82	NOT TO SCALE
	DYN				
	DSTE	TCD			
	CTI	CHD			
					ALL DIMENSIONS IN MILLIMETER

ANNEXURE-11

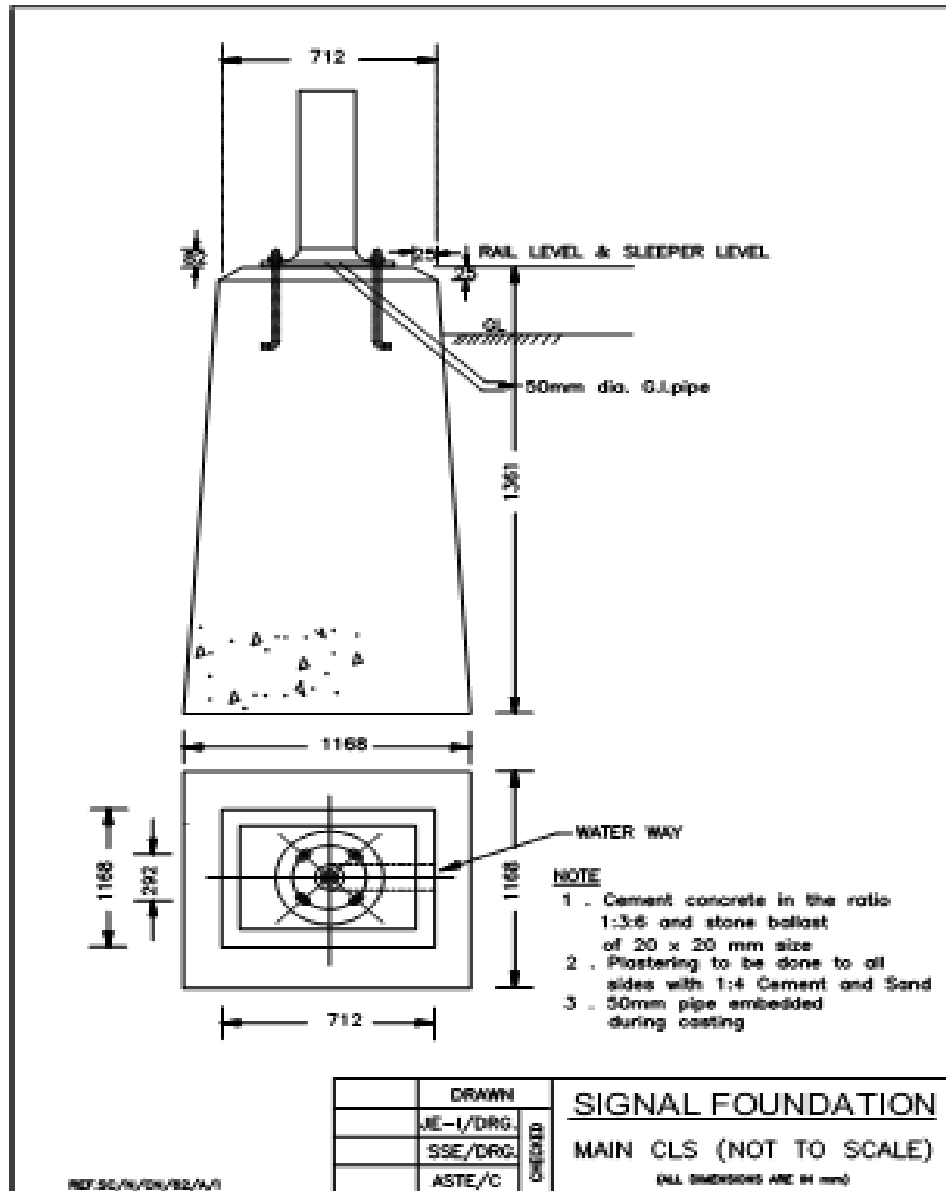






DRG. No.SK/CN/I/89/B/I

	DRAWN	CHECKED	FOUNDATION FOR LOCATION BOX (HALF & QUARTER SIZE) (NOT TO SCALE) (ALL DIMENSIONS ARE IN mm)
	JE-I/DRG.		
	SSE/DRG.		
	ASTE/C		



ANNEXURE-15

