

5033790/2026/O/o WM/Plg-II/DMW/PTA

Annexure-29470079/Hardware/Rev.-0

Date:-29-04-2026

SN	Description	Drg. No.	Qty/Loco (Nos.)
1	HEX. HD. BOLT M6x20 (Zn Plated)	182-00012-003	44
2	M6 CONICAL WASHER (Zn Plated)	182-00046-007	20
3	M6 FLAT WASHER (Zn Plated)	182-00043-001	44
4	M6 HEX. NUT (SS 304)	182-00061-004	20

NOTE: Above mentioned hardware to be procured from CLW/BLW/RDSO approved source only.

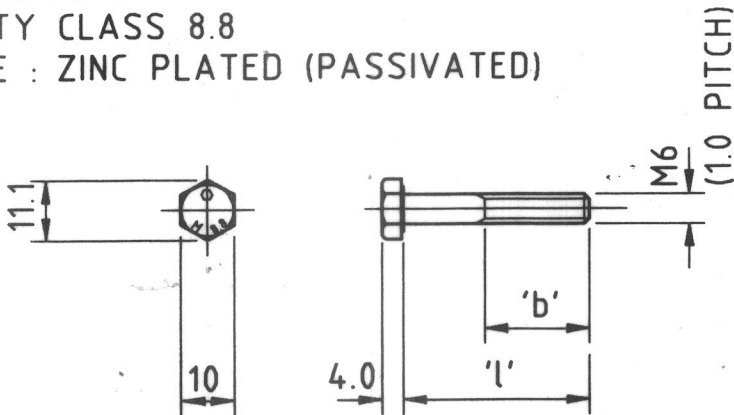
29/4/26
AWM/Plg.

29/04/2026
SSE/MPS-II

DO NOT SCALE DRAWINGS, WHEN IN DOUBT ASK.

ISO METRIC PRECISION HEXAGON HEAD BOLT
TO AS1110-1984

MATERIAL : STEEL
PROPERTY CLASS 8.8
SURFACE : ZINC PLATED (PASSIVATED)



ARTICLE No.	Dimensions	
	'b'	'l'
182-00012-001	12	12
-002	16	16
-003	18	20
-004	18	25
-005	18	30
-006	18	35
-007	18	40
-008	18	45
-009	18	50
-010	18	55
-011	18	60

TRANSFER OF TECHNOLOGY
ISSUE

DATE 30 JUNE 1995

1	18200012	AS QA18200012	94-07-08	FHG	B
Rev		Alteration	YY-MM-DD	Initials	Ckd

ABB Asea Brown Boveri Transportation Pty Limited

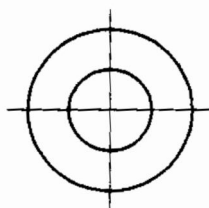
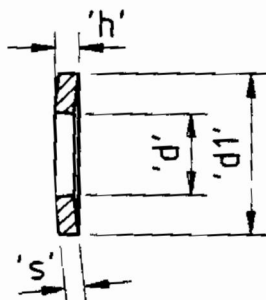
A.C.N. 010 699 804

Approved by	Dec Reg	Scale	NTS	Title	M6 HEX. BOLT
Design Checked by	Iss by Dept	YY-MM-DD	92-07-08	Drg No	TOT 245/551
Drg Checked by	Drawn by	CBS		ABB Drg No	182-00012
ABB Transportation					Sheet 1
					Of 1

5033790/2026/O/o WM/Hg/DMW/PTA
3792355/2025/O/o WM/Design/DMW/PTA

MATERIAL : SPRING STEEL

FINISH : HARDENED, ZINC PLATED (PASSIVATED)



31 DEC 1999

Contract

Used On

Assy Drawing

ARTICLE No.	NOM. SIZE (BOLT DIA.)	Dimensions				
		'd'	'd1'	'h'max.	'h'min.	's'
182-00046-001	2	2.2	5	0.6	0.5	0.4
-002	2.5	2.7	6	0.72	0.61	0.5
-003	3	3.2	7	0.85	0.72	0.6
-004	3.5	3.7	8	1.06	0.92	0.8
-005	4	4.3	9	1.30	1.12	1.0
-006	5	5.3	11	1.55	1.35	1.2
-007	6	6.4	14	2.00	1.70	1.5
-008	7	7.4	17	2.30	2.0	1.75
-009	8	8.4	18	2.60	2.24	2.0
-010	10	10.5	23	3.20	2.80	2.5
-011	12	13	29	3.95	3.43	3.0
-012	14	15	35	4.65	4.04	3.5
-013	16	17	39	5.25	4.58	4.0
-014	18	19	42	5.80	5.08	4.5
-015	20	21	45	6.40	5.60	5.0
-016	22	23	49	7.05	6.15	5.5
-017	24	25	56	7.75	6.77	6.0

2	DRG No 18200046 WAS QA18200046	94-06-07	FHG	CBS
1	'h' min. DIMENSION ADDED.	93-03-23	CBS	BS
Rev	Alteration	YY-MM-DD	Initials	Ckd

ABB

A.C.N. 010 699 804

Asea Brown Boveri Transportation Pty. Limited

Approved by	Dec Reg	Scale NTS	Title CONICAL SPRING WSHR.	
Design Checked by	Iss by Dept	YY-MM-DD 92-07-20		
Drq Checked by	Drawn by CBS		Drq No	Sheet 1
ABB Transportation			ABB Drq No 182-00046	Of 1

As the drawing incorporates confidential information of ABB, its disclosure to third parties also requires ABB's prior written consent

All rights conferred by the law of copyright and by virtue of international copyright conventions, reserved to ABB. Reproduction in whole or in part requires the prior written consent of ABB

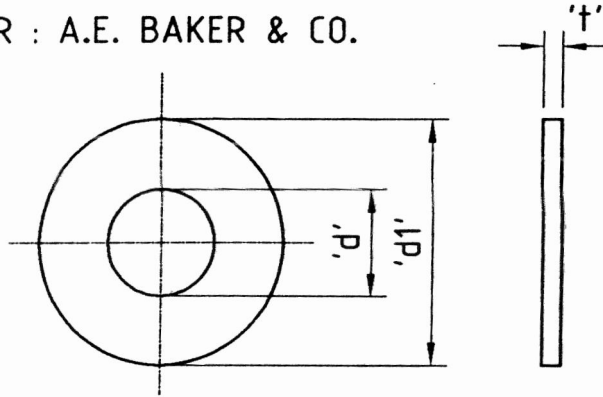
This document/drawing was prepared by or on behalf of ABB Brown Boveri Transportation Pty. Limited ("ABB") and the copyright therein belongs to ABB

UNDRAWINGS

5093800/2026/O/o WM/De H/50/WM/PTA

DO NOT SCALE DRAWINGS, WHEN IN DOUBT ASK.

ROUND FLAT WASHER
 MATERIAL : COMMERICAL STEEL
 FINISH : ZINC PLATED (PASSIVATED)
 SUPPLIER : A.E. BAKER & CO.



ARTICLE No.	NOM. SIZE (BOLT DIA.)	Dimensions		
		'd'	'd1'	't'
182-00043-001	6	6.5	19.3	1.6
-002	8	9.0	22.2	1.6
-003	10	11.1	24.0	2.0
-004	12	14.0	32.2	2.5
-005	16	17.9	36.0	3.0
-006	20	21.6	44.2	3.0
-007	24	26.6	54.9	5.0
-008	30	32.5	67.5	5.0
-009	36	$\triangle 2$ 37.4	73.0	5.0
-010	42	43.0	92.0	5.0

	Assy Drawing
	Used On
	Contract

2	ECCN 22360. ITEM 009 DIM 'd' WAS 36. SUPPLIER ADDED.	98-01-21	G.K.	M.F.
1	18200043 WAS QA18200043	94-07-11	FHG	
Rev	Alteration	YY-MM-DD	Initials	Ckd

TOT-826/212

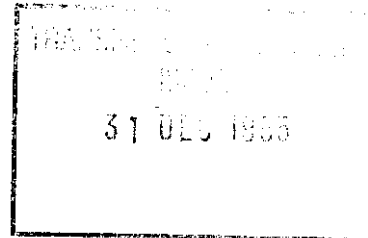
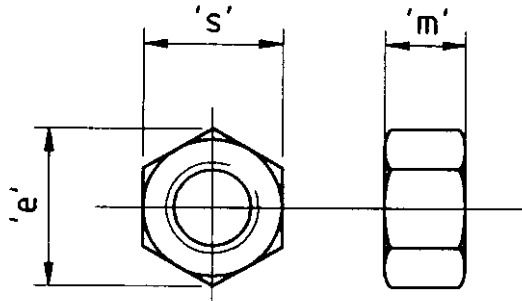
A.C.N. 010 699 804
Asea Brown Boveri Transportation Pty. Limited

Approved by <i>P. J. J. J.</i>	Dec Reg	Scale NTS	Title ROUND FLAT WSHR.	
Design Checked by	Iss by Dept	YY-MM-DD 92-07-21		
Drg Checked by	Drawn by CBS		Drg No	Sheet 1
ABB Transportation			ABB Drg No 182-00043	Of 1

DO NOT SCALE DRAWINGS, WHEN IN DOUBT ASK.

ISO METRIC PRECISION HEXAGON NUT
TO AS1112-1984

MATERIAL : STAINLESS STEEL
GRADE A.I.S.I. 304



Contract	Used On	Assy Drawing

ARTICLE No.	NOMINAL DIA. (d)	PITCH OF THREAD	Dimensions		
			's'	'm'	'e'
182-00061-001	M3	0.5	5.5	2.4	6.01
-002	M4	0.7	7.0	3.2	7.66
-003	M5	0.8	8.0	4.7	8.79
-004	M6	1.0	10.0	5.2	11.05
-005	M8	1.25	13.0	6.8	14.38
-006	M10	1.5	16.0	8.4	17.77
-007	M12	1.75	18.0	10.8	20.03
-008	M16	2.0	24.0	14.8	26.75
-009	M20	2.5	30.0	18.0	32.95
-010	M24	3.0	36.0	21.5	39.55
-011	M30	3.5	46	25.6	50.85
-012	M36	4.0	55	31.0	60.79
-013	M2.5	0.45	5.0	2.0	5.45


- 2	ARTICLE No. -013, M2.5 ADDED	94-12-22	MM	
1	DRG No 18200061 WAS QA18200061	94-06-07	FHG	
Rev	Alteration	YY-MM-DD	Initials	Ckd

ABB

A.C.N. 010 699 804

ABB Asea Brown Boveri Transportation Pty. Limited

WAG-9

Approved by <i>AK</i>	Dec Reg	Scale NTS	Title HEXAGON NUT	
Design Checked by <i>AK</i>	Iss by Dept	YY-MM-DD 92-07-22		
Drg Checked by <i>BB</i>	Drawn by CBS		Drg No	Sheet 1
ABB Transportation			ABB Drg No 182-00061	Of 1

ALL RIGHTS RESERVED BY THE LAW OF COPYRIGT. BY
virtue of international copyright convention, and
reserved to ABB. Reproduction in whole or in part
requires the prior written consent of ABB