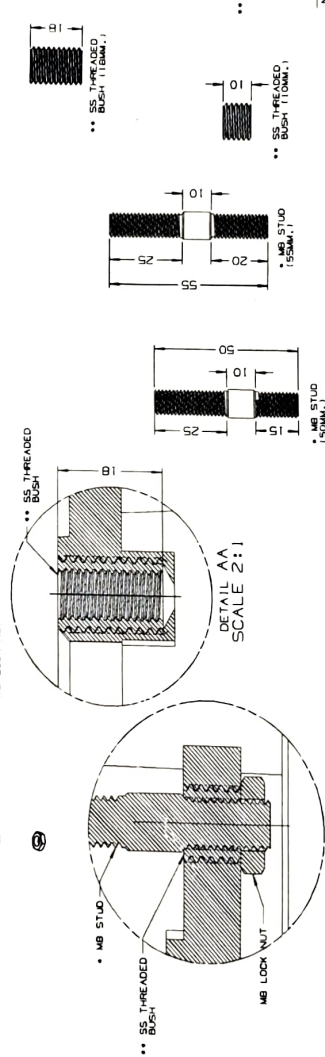
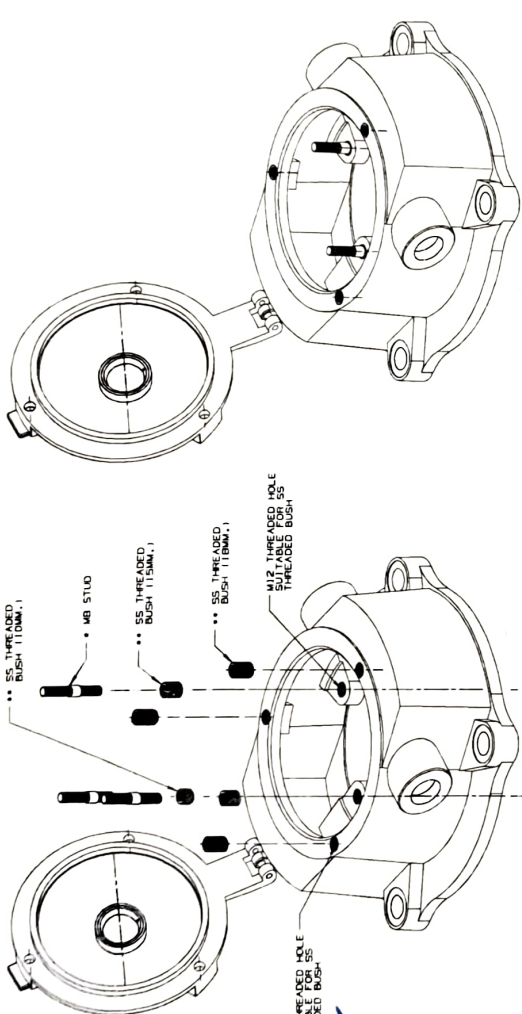
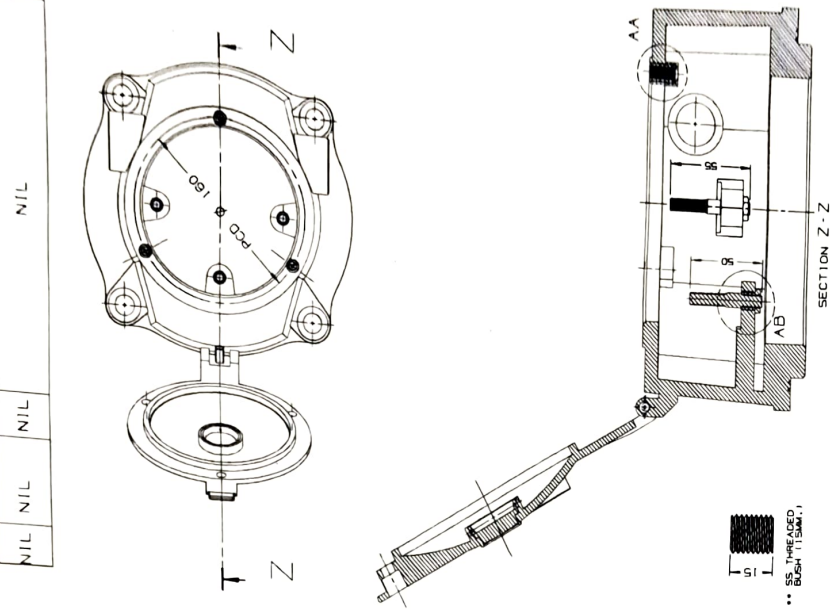


Technical drawing of a Wheel Set Earthing Housing Modification. The drawing includes a front view (top) showing a circular housing with four mounting points and a central hole. A side view (bottom) shows the housing with a flange and a central hole. A cross-section (right) shows the internal components, including a central shaft and a flange. The drawing is labeled 'SECTION Z-Z' and 'DRG. NO. SKED-945'.



NOTE: ALL DIMENSIONS IN MM.
 1. THREADED BUSH SHALL BE OF SS MATERIAL TO AISI 304. THE BUSH SHALL HAVE M12X1.75 (RH) THREAD ON OUTSIDE AND M8 (RH) THREAD ON INSIDE.
 2. THREADED BUSH ON INSIDE IS 15MM, 1.2 NOS. IT SHALL BE USED FOR FASTENING THE COVER.
 3. THREADED BUSH OF LENGTH 15MM, 1.2 NOS. IT SHALL BE USED FOR FASTENING.
 4. THIS STUD SHALL BE BRIGHT POLISHED AND ASSEMBLY MATERIAL. MB STUD SHALL BE PROPERLY SCREENED WITH LOCK NUT FROM BOTTOM SIDE.
 5. THIS DRAWING SHALL BE REFERRED ALONG WITH CAI NO. ED/CAI/031. DATED: 20.03.2024.

[illegible]