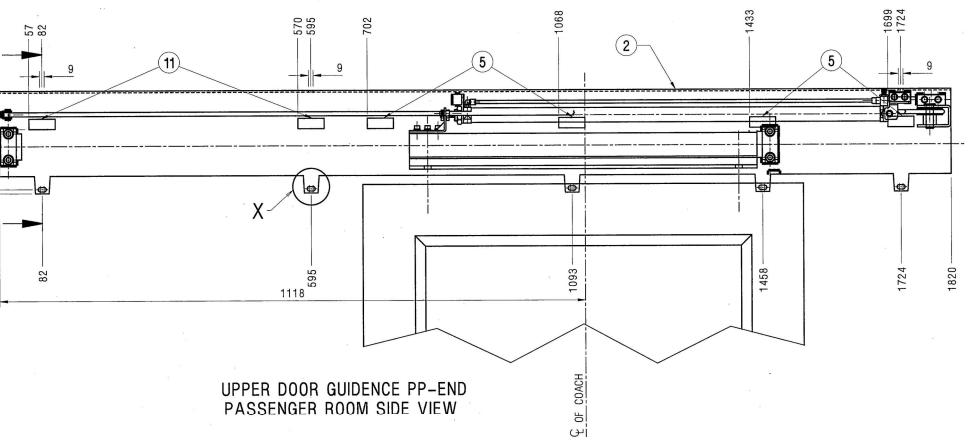
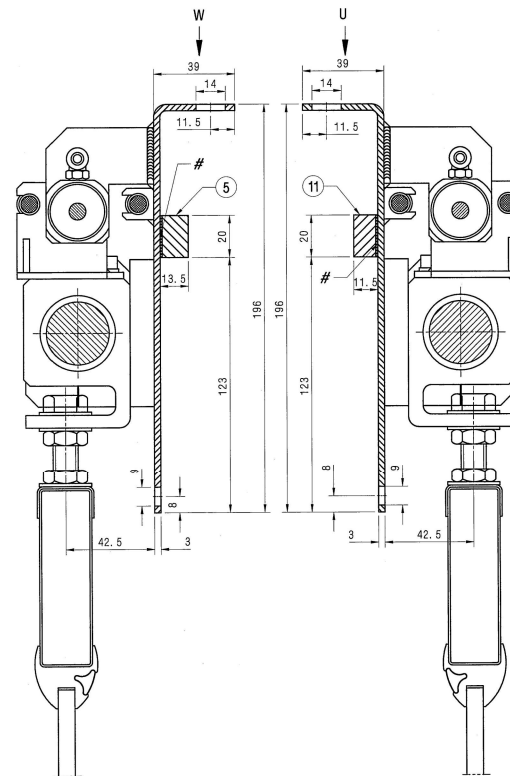


UPPER DOOR GUIDANCE NPP-END
DOORWAY SIDE VIEW

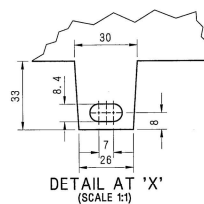


UPPER DOOR GUIDANCE PP-END
PASSENGER ROOM SIDE VIEW

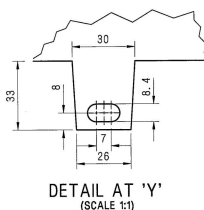


SECTION MM
(SCALE 1:1)

SECTION NN
(SCALE 1:1)



DETAIL AT 'X'
(SCALE 1:1)



DETAIL AT 'Y'
(SCALE 1:1)



VIEW FROM 'U'
(SCALE 1:1)



VIEW FROM 'W'
(SCALE 1:1)

ALT. NO.	ALT. DATE	ZONE	ALTERATIONS	AUTHORITY
a	23/05/2011	J18 K4 NA D6 D13,D16 NA NA	1. MATL. & SPEC. WAS MDT5:217 FOR MD100049 ITEMS NOS. 1 AND 2. 2. MDT5:225 WAS MDT5:217 IN NOTE NO.1. 3. SECTION AA,BB,EE,FF,GG,UU,RR,SS & HH MADE CLEAR BY DELETING UNWANTED CURVES. 4. DIM. '593 EFFECTIVE WORKING STROKE' ADDED. 5. DIMS. 124,595 AND 124 ADDED. 6. DIMS. 195.5,147,70,9.5 AND 42.5 ADDED IN SECTION EE AND SECTION HH. DIMS. 64,82 AND 6 DELETED. 7. DIMS. 147,145,74,9.5 AND 42.5 ADDED IN SECTIONS UU,SS AND AA-AA ADDED. 8. DIMS. 25,12.5,25,50 AND 172 ADDED IN SECTION PP. 9. DIM. 1923.5 FROM F.L. (CLEAR OPENING) ADDED IN SECTION SS AND GG. 10. DIMS. 102 AND 66 DELETED FROM SECTION MM AND DIMS. 3 AND 42.5 ADDED IN SECTION MM AND NN.	MD100049
b	04/08/2017	J18 K2	1. MATL. & SPEC. WAS MDT5:225 FOR MD160022 ITEMS NOS. 1 AND 2. 2. NOTE NO.1 REVISED.	MD160022

ENTERED
INFO
DATA BASE

08 AUG 2017

15	STAINLESS STEEL MACHINE WASHER B.4 (A2 TO IS4367 PT.14)	16	LIHWS509	IS: 2016-1967	ITEM-5
14	STAINLESS STEEL PLAIN WASHER A9 (A2 TO IS4367 PT.14)	12	NIL	IS: 2016-1967	NIL
13	CAGE NUT, COMPLETE	12	3 10113.0. 22.135.106	NIL	NIL
12	CAGE NUT, COMPLETE	16	31C2883.2. 30.220.107	NIL	NIL
11	COMPRES BOARD 10X20X50	2	NIL	ROSD/SPEC. C-9407 TYPE-I	NIL
10	STAINLESS STEEL HEX SOCKET HD CAP SCREW M8X30 (A2-70 TO IS4367 PT.14-6H)	16	LIHWS10	IS: 2269-1995 DIN912	ITEM-6
9	STAINLESS STEEL HEX HEAD SCREW M8X40 (A2-70 TO IS4367 PT.14)	12	LIHWS502	IS: 1364 PT.2-92 CE	ITEM-14
8	BLIND RIVET ASK12	56	NIL	DIN7337	NIL
7	STAINLESS STEEL SLOTTED CSK HD TAPP SCREW S15.5X20 (A2-70 TO IS4367 PT.14-6H)	12	NIL	IS: 7170-1990,13 0-1482	ITEM-6
6	SHIM	12	4 10113.0. 22.135.104	NIL	NIL
5	PACKING	10	4 10113.0. 22.135.101	NIL	NIL
4	BRACKET, PPE COMPLETE	1	3 10113.0. 22.135.109	NIL	NIL
3	BRACKET, COMPLETE	6	3 10113.0. 22.135.102	NIL	NIL
2	SALOON SLIDING DOOR, PPE END	1	1 10113.0. 22.135.011	MDT5:2593	NIL
1	SALOON SLIDING DOOR, NPPE END	1	NIL	MDT5:2593	NIL

WELD LENGTH	ITEM	DESCRIPTION & DIMENSIONS	ASSEMBLY	DETAIL DRG	MATL. & SPEC.	REMARKS
NIL	GROUP	INTERIOR DOOR & ACCESSORIES COMPLETE	SUPERSEDES:	LD56228	ALT a	
NIL	WEIGHT	FILE	LD56228a3b.prt (2D)			
NIL	S. AREA					
NIL	LENGTH/DIA					
NIL	WIDTH/THICK.					
NIL	HEIGHT					
NIL						

MOUNTING ARRANGEMENT OF AUTOMATIC SLIDING DOORS

FOR ENTRANCE TO AC AREA OF 120 SEATER DD AC CHAIR CAR (EOG)

RAIL COACH FACTORY, KAPURTHALA

रेलकोच फैक्टरी कपूरथला

IRS

PL NO. NIL

DRG.NO. LD56228

SIZE: A1 SHEET: 3/3

NOTE: 1. THIS DRAWING SHALL BE REFERRED WITH MDT5:25283.
2. DIMENSIONS ARE FOR REFERENCE PURPOSE ONLY. LOWER DOOR GUIDANCE HAS TO BE MOUNTED ON THE UPPER DOOR GUIDANCE ALIGNMENT.
3. DIMS. 5 AND 11 SHOULD BE PROPERLY PASTED WITH ITEM NOS. 1 AND 2 WITH APPROVED BRAND OF ADHESIVE.
4. THE GEOMETRY OF MOUNTING PLATE (BEARING SHEET) SHOULD MATCH WITH THE DIMENSIONS GIVEN ABOVE.
5. THE MOVEMENT MECHANISM SHOWN IN THIS DRAWING ARE ONLY ILLUSTRATIVE AND NOT BINDING.
BHAJYAPRAKASH J

THIS DRAWING SHALL AUTOMATICALLY RENDER THIS DRAWING INVALID.

DETAIL DRGS STARTING WITH "LI" ARE INTERNAL REFERENCE LISTS ONLY AND ARE NOT FOR ISSUE.

REVISIONS REFER MDG0008

page 1 of 1

page 1 of 1

2	3	4	5	6	7	8	9	10	11	12	13	14	15	16	17	18	19
---	---	---	---	---	---	---	---	----	----	----	----	----	----	----	----	----	----