

ORIGINAL SUPPLIER—STAUFF

DETAIL DIMENSIONS OF REF. NOS. 3 & 4

REF. NO.	D	D ₁	H	L ₁	L ₂	S
3	25	30	37	81 ← 7	50 36	1
4	38	43	54	106	56	1

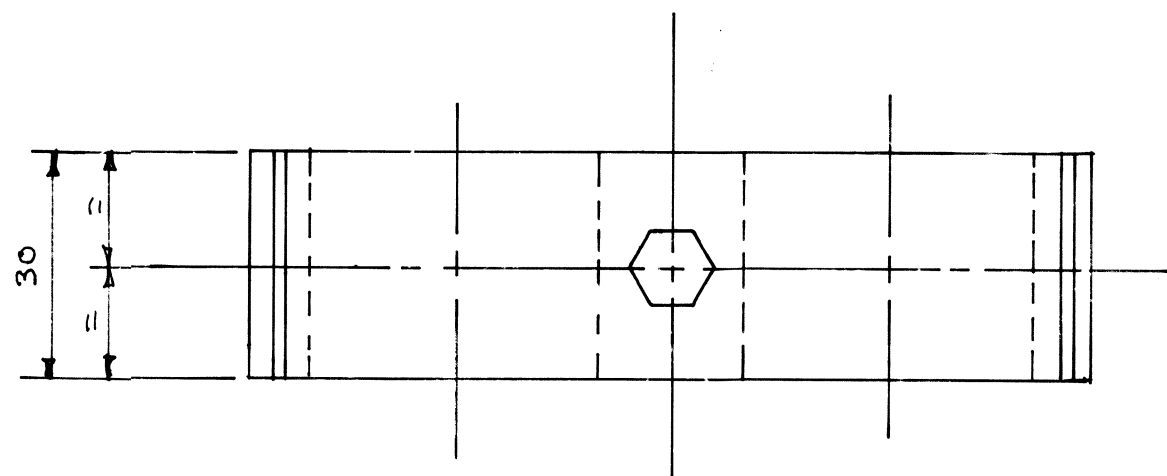
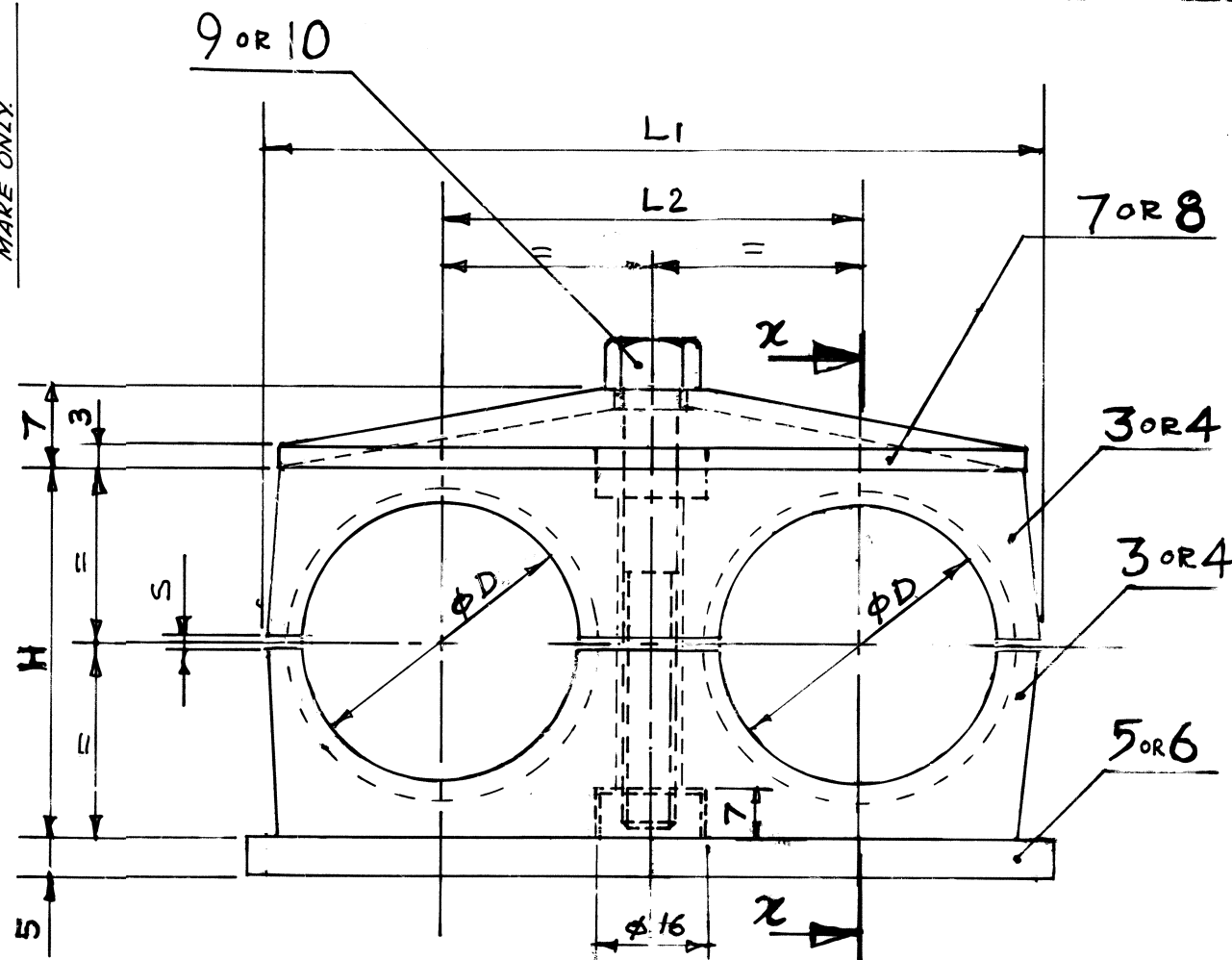
①	REF. NO.	STAUFF CATALOGUE PART NO.
	3	3D-325/25 PP
	4	5D-538/38 PP


The diagram shows a cross-section of a composite beam, labeled "SECTION-XX". The beam consists of several layers and components:

- Top Layer:** A concrete slab with a total thickness of 70R8. It contains four vertical reinforcement bars, each with a diameter of 3. The spacing between the bars is 6.
- Second Layer:** A layer of 30R4 reinforcement bars.
- Third Layer:** A layer of 30R4 reinforcement bars.
- Fourth Layer:** A layer of 30R4 reinforcement bars.
- Fifth Layer:** A layer of 50R6 reinforcement bars.
- Bottom Layer:** A concrete slab with a total thickness of 2.

Dimensions and labels:

- Top Layer:** 70R8 (total thickness), 3 (bar diameter), 6 (spacing).
- Second Layer:** 30R4 (bar diameter).
- Third Layer:** 30R4 (bar diameter).
- Fifth Layer:** 50R6 (bar diameter).
- Bottom Layer:** 2 (total thickness).
- Section Label:** SECTION-XX



10	—	HEX. BOLT M8x60 FOR CLAMP ASSY. 'B'	1	STEEL	IS: 1264 P 8-8	
9	—	HEX. BOLT M8x45 FOR CLAMP ASSY. 'A'	1	"	"	
8	1209-18.406-002 REF. No. 2	COVER PLATE FOR CLAMP ASSY. 'B'	1	"	IS: 5786 Fe-410	
7	1209-18.406-002 REF. No. 1	COVER PLATE FOR CLAMP ASSY. 'A'	1	"	"	
6	1209-18.406-064 REF. No. 2	BASE ASSLY. FOR CLAMP ASSY. 'B'	1	"	—	
5	1209-18.406-064 REF. No. 1	BASE ASSLY. FOR CLAMP ASSY. 'A'	1	STEEL	—	
4	—	CLAMP BODY FOR CLAMP ASSY. 'B'	2	PO. / PRO File	SEE NOTE 4	
3	—	CLAMP BODY FOR CLAMP ASSY. 'A'	2	"	"	
2	—	CLAMP ASSY. 'B'	—	—	—	
1	—	CLAMP ASSY. 'A'	—	—	—	
निर्देश संख्या REF. NO.	अंग आरेखण संख्या PART DRG. NO.	वर्णन DESCRIPTION	संख्या संख्या NO. / ASSLY.	पदार्थ MATL	विशिष्ट SPECN	प्रतिभा कि. ग्रा. WT. EACH IN KG.
अभिकल्पित DGN	अभिज्ञ CHD	आरेखण संदर्भ REF. ASSLY DRG. NO.	अभिकल्प एवं विकास केन्द्र D & D CENTRE चित्तोजन रेल इंजन कारखाना CHITTRANJAN LOCOMOTIVE WORKS संस्करण क्र. CAD NO.			
अधीनस्थ SUPPLY	अधीनस्थ REVIEWED		 1ST. ANGLE PROJECTION			
अनुमोदित APPROVED	अनुमोदित DATE	CLAMP ASSY. 'A' & 'B'	प्रयोग में USED FOR LOCOS WAG/9, WAP/5			
अनुमोदित SCALE	अनुमोदित REF.		आरेखण संख्या DRAWING NO.			
AB/2 DRG. NO. 182-20438-003 & -004		1209-18.306-061				

NOTE :-

1. ALL DIMNS. ARE IN M.M.
- ② 2. GENERAL TOLERANCE ON DIMENSIONS (a) BELOW 25 mm: ± 0.2
(b) 25 mm - 50 mm: ± 0.5 (c) ABOVE 50 mm: ± 1.0 EXCEPT ϕ D. & ϕ D.
- ③ 3. ITEM REF. NOS. 9 & 10 ARE TO BE ZINC PLATED.
(10 MICRONS/10M).

अनिर्दिष्ट सह्य- सीमा भा.मा. 2102 के अनुसार UNSPECIFIED TOLERANCE TO IS:2102	सतह-रूक्षता का मान भा.मा. 3073 के अनुसार SURFACE ROUGHNESS VALUE TO IS:3073	पदान GRADE NUMBER Ra/um	सं1 N1	सं2 N2	सं3 N3	सं4 N4	सं5 N5	सं6 N6	सं7 N7	सं8 N8	सं9 N9	सं10 N10	सं11 N11	सं12 N12
		चिह्न SYMBOL												

⑤	AME/D&D	NOTE 5 ADDED	20.2.65
④	AME/D&D	NOTE 2 MODIFIED.	14.9.60
③	AME/D&D	NOTE 4 ADDED	29.6.55
②	AME/D&D	DIMENSIONS 81 & 50 OF REF. NO.3 WERE 67 & 36 RESPECTIVELY. NOTES 2 & 3 ADDED.	3/5/21
①	AME/D&D	'STAUFF' CATALOGUE PARTNO. & WAP/5 ADDED.	21.8.98
परिवर्तन संख्या ALT.NO	प्राधिकार AUTHY.	वर्णन DESCRIPTION	दिनांकित आदेश DATED INITIAL