

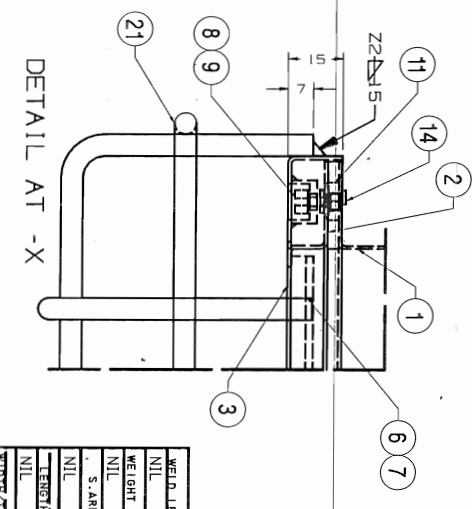
TABLE-1
DETAILS OF TERMINAL CONNECTOR

DESCRIPTIONS	CAT.NO. & QTY.	QTY.
2-CONDUCTOR TERMINAL STRIP OR SIMILAR IN PHOENIX MAKE.	261-102 OF M/S WAGO	2

SCHEMATIC DIAGRAM FOR LED LIGHT
(FOR REFERENCE ONLY)

1. THE TOUGHENED GLASS OF THICKNESS 3-4mm OF M/S SAINT GOBAIN/ASAHI INDIA/BOROSIL OR EQUIVALENT MAKE (PRIOR APPROVAL SHALL BE TAKEN FROM CEDE RCF/KXH) SHALL BE PROVIDED ON OUTSIDE OF POLYCARBONATE DIFFUSER IN COVER 1.e.
2. ITEM-2 TO ACHIVE BOX TRANSPARENCY AND COMPLETE DIFFUSION OF LIGHT SO THAT LIGHT SOURCE/SPOT IS NOT VISIBLE.
3. DIFFUSER MATERIAL SHALL BE CONFORMING TO UL 94V0 & MADE FROM 'LEXAN SP24-492X' FIRE RETARDANT POLYCARBONATE MATERIAL OF GE PLASTIC/ASAHI MAKE OR EQUIVALENT WITH PRIOR APPROVAL OF CEDE. DIFFUSER THICKNESS SHALL NOT BE LESS THAN 1.5MM. AND SHALL BE FREE FROM SCRATCHES, AIR BUBBLES, HOLES AND ULTRA-VIOLET STABILIZED.
4. HOUSING OF THE LED DRIVER SHALL BE MADE FROM 1MM. THICK STAINLESS STEEL SHEET MATERIAL TO SS-304 L/SS 304 S2 WITH DIMENSIONS FOR MAIN LED DRIVER (1160X45X35MM. MAX.) AND MOUNTING DIMENSIONS FIXED TO 140MM.
5. WIRING TO BE DONE WITH 1.0 SQ.MM. PTFE CABLE OR E-BEAM CABLE OF RDSO APPROVED MAKE ONLY.
6. SCHEMATIC DIAGRAM, MANUFACTURER'S INSTRUCTION SHALL BE SCREEN PRINTED ON ALUMINIUM PLATE AND PURCHASE ORDER AND S.NO. IN THE FORM OF 'YYYYMMNN' WHERE 'YYYY' STAND FOR YEAR AND 'MM' STAND FOR MONTH AND 'NNN' STAND FOR RUNNING SERIAL NO. SHALL BE PUNCHED ON IT AS SHOWN IN LEGEND PLATE AND RIVETTED AT THE BACK SIDE OF THE FITTING.
7. ITEM-1, 2 & 3 SHOULD BE DEEP DRAWN AND NOT FABRICATED.
8. SUITABLE FIRE PROOF GROMMETS TO BE PROVIDED FOR CABLE TRAVERSING TO THE LED DRIVER.
9. 3mm. EPDM SPONGE MAY BE IN SINGLE PIECE TO BE GLUED ALL AROUND AT LOCATIONS INDICATED ON DRAWING.
10. ONLY TIG/SPOT WELDING SHALL BE DONE AS PER THE REQUIREMENT. NO OTHER WELDING IS ACCEPTABLE.
11. DOME KEY SHALL BE SUPPLIED ONE NUMBER FOR EVERY 10 FITTINGS AS PER DRG.NO.CC76052.
12. TERMINAL CONNECTOR SHALL BE OF CAGE CLAMP TYPE WAGO/PHOENIX MAKE AS INDICATED IN TABLE-1.
13. FRAMED DIMENSIONS ARE TO BE STRICTLY ADHERED TO BY JIG PUNCHING.
14. ALL DIMENSIONS IN MM.

DETAIL AT -X



ITEM	DESCRIPTION & DIMENSIONS	DRG. NO.	QTY.	REMARKS
1	COVER FOR LED DRIVER.	SS-304 L / SS-304 S2	1	NIL
2	WIRE MESH GUARD 6MM S.S. WIRE.	SS-304 L / SS-304 S2	1	NIL
3	DOME KEY	CC76052	1	NIL
4	SCREWING PIECE 2X15X45MM	SS-304 L / SS-304 S2	1	NIL
5	SPRING WASHER M4	SS-304 L / SS-304 S2	1	NIL
6	PLAIN WASHER Ø 4.5	SS-304 L / SS-304 S2	1	NIL
7	PLAIN WASHER 4X6	SS-304 L / SS-304 S2	1	NIL
8	ROUND BOWS Ø 10X4 (M4)	SS-304 L / SS-304 S2	1	NIL
9	RIVET	SS-304 L / SS-304 S2	1	NIL
10	CHAD SCREW 4X6	SS-304 L / SS-304 S2	1	NIL
11	2-CONDUCTOR TERMINAL STRIP	SS-304 L / SS-304 S2	1	NIL
12	EPDM SPONGE (3MM)	SS-304 L / SS-304 S2	1	NIL
13	GROMMET	SS-304 L / SS-304 S2	1	NIL
14	CIRCLIP	SS-304 L / SS-304 S2	1	NIL
15	CAPTIVE SCREW	SS-304 L / SS-304 S2	1	NIL
16	TOUGHENED GLASS THICKNESS-3-4MM.	SS-304 L / SS-304 S2	1	NIL
17	PLAIN DIFFUSER THICKNESS 21.5MM.	SS-304 L / SS-304 S2	1	NIL
18	LED DRIVER	SS-304 L / SS-304 S2	1	NIL
19	PCB FOR LED	SS-304 L / SS-304 S2	1	NIL
20	DIFFUSER COVER THICKNESS-1MM	SS-304 L / SS-304 S2	1	NIL
21	COVER THICKNESS-1MM	SS-304 L / SS-304 S2	1	NIL
22	FRAME 1MM	SS-304 L / SS-304 S2	1	NIL

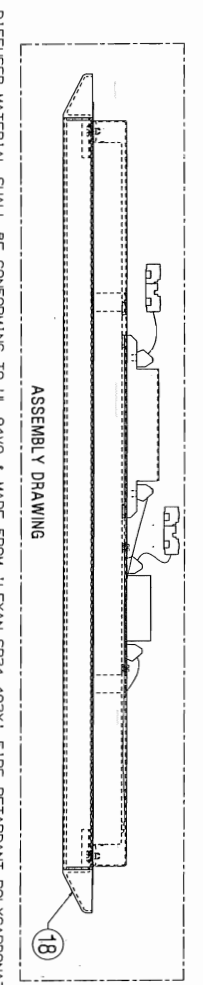
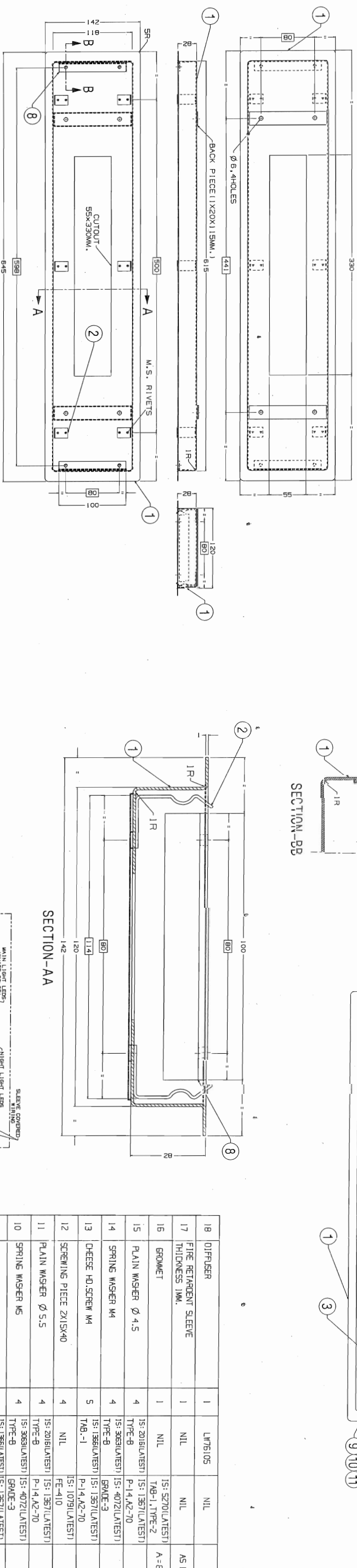
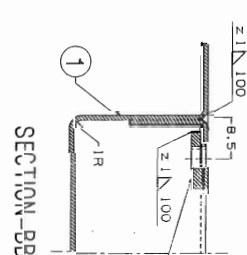
WELD LENGTH	WELD WEIGHT	SCALE	DATE	BY	CHECKED	DATE	BY
NIL	NIL	1:1	20/05/2016	DRG. NO. CC76457	DRG. NO. CC76457	20/05/2016	DRG. NO. CC76457



4

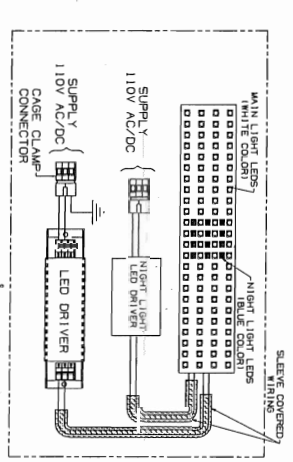
4

4



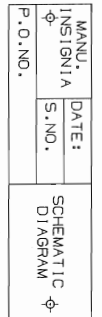
MANU. INSIGNIA Φ	DATE :	SCHEMATIC DIAGRAM Φ
	S. NO.	
P. O. NO.		

DESCRIPTIONS	CAT. NO.	QTY./FITTING
MALE CONNECTOR WITH CAGE CLAMP	(721-603) OF M/S PHOENIX MAKE	2
FEMALE CONNECTOR WITH CAGE CLAMP	(721-103/026-000) OF M/S PHOENIX MAKE	2

[illegible]



LEGEND PLATE



ITEM	DESCRIPTION & DIMENSIONS	QUANTITY	DETAILS	UNIT	QTY	REMARKS
18	DIFFUSER	1	LW76/105	NIL		NIL
17	FIRE RETARDANT SLEEVE THICKNESS 1MM.	1	NIL	NIL		AS REQUIRED
16	SPRINKLER	1	NIL	15: 5270(LATEST) TAB-1, TYPE-2		A = B, E = 1
15	PLAIN WASHER Ø 4.5	2	15: 2016(LATEST) 15: 1357(LATEST)	P-14, A2-70		NIL
14	SPRING WASHER M4	2	15: 3063(LATEST) 15: 4072(LATEST) TYPE-B	15: 1357(LATEST) GRADE-3		NIL
13	CHEESE HO. SCREW M4X10	3	15: 1366(LATEST) TAB-1	15: 1357(LATEST) P-14, A2-70		NIL
12	SCREWING PIECE ZN15X40	2	NIL	15: 1079(LATEST) FE-410		SEE NOTE-12
11	BACKET 1X109X330	1	NIL	15: 1079(LATEST) FE-410		NIL
10	PLAIN WASHER Ø 5.5	4	15: 2016(LATEST) TYPE-B	15: 1357(LATEST) P-14, A2-70		NIL
9	SPRING WASHER M5	4	15: 3063(LATEST) TYPE-B	15: 4072(LATEST) GRADE-3		NIL
8	CHEESE HO. SCREW M5X10	4	15: 1366(LATEST) TAB-1	15: 1357(LATEST) P-14, A2-70		NIL
7	MOUNTING BRACKET 1MM. THICK	2	NIL	15: 1079(LATEST) FE-410		NIL
6	TERMINAL CONNECTOR CASE CLAMP TYPE	1	NIL	NIL		SEE NOTE-5
5	LED DRIVER	1	NIL	NIL		SEE NOTE-13
4	PLAIN DIFFUSER THICKNESS 1.5MM.	1	NIL	POLYCARBONATE		SEE NOTE-14
3	LED MODULE BOX THICKNESS 1MM.	1	NIL	15: 5131(LATEST) GRADE-10		SEE NOTE-4
2	SPRING 1X15X52	6	NIL	15: 2507(LATEST) GRADE-5		SEE NOTE-9 & 10
1	FRAME 1MM. THICK	1	NIL	15: 5131(LATEST) GRADE-10		SEE NOTE-4

14. DIFFUSER SERIAL SHALL BE CONFORMING TO U. S. AND MAKE FROM "LEXAN SP24-492" FIRE RETARDANT POLYCARBONATE MATERIAL OF GE PLASTIC/50%K MAC OR EQUIVALENT WITH PRIOR APPROVAL OF CEE. DIFFUSER THICKNESS SHALL NOT BE LESS THAN 1.5MM. AND SHALL BE FREE FROM SCRATCHES, AIR BUBBLES, HOLES AND ULTRA-VIOLET STABILIZED.

13. HOUSING OF THE LED DRIVER SHALL BE MADE FROM 1MM. THICK ALUMINUM SHEET/FIRE RETARDANT PCX/CARBONATE OR FIBER SHEET/MATERIAL WITH DIMENSIONS FOR MAIN LED DRIVER 160x95x35MM. MAX.-1. AND MOUNTING DIMENSIONS FIXED TO 140MM.

12. ITEM NO.-1 SHALL NOT GET LOOSE/DEFORMED/LACK ITS PHYSICAL PROPERTIES WHILE IN USE FOR ROLLING STOCK APPLICATION.

11. ENTIRE WIRING AND NOTCHES SHALL BE COVERED WITH 1MM THICK FIRE RETARDANT SLEEVES.

10. ITEM NO.-2 SHALL NOT BE WELDED WITH ITEM NO.-1 TO SUIT PROPER CLAMPING OF ITEM NO.-1B.

9. ITEM NO. 1TIG/SPOT WELDING SHALL BE DONE AS PER THE REQUIREMENT, BUT OTHER WELDING IS ACCEPTABLE. A 5 NO. STANDS FOR YEARLY MAINTENANCE WHERE "NXXY" STANDS FOR YEARLY MAINTENANCE FOR MONTH AND "NNN" STANDS FOR WIRING TO BE DONE WITH 1.0 SO. MM. PRE CABLE OR E-BEAM CABLE OF ROSSO APPROVED MAKE ONLY.

8. SOCKET FOR LED FRAMEWORK/MAINWIND WHERE "NXXY" STANDS FOR YEARLY MAINTENANCE FOR MONTH AND "NNN" STANDS FOR WIRING TO BE DONE WITH 1.0 SO. MM. PRE CABLE OR E-BEAM CABLE OF ROSSO APPROVED MAKE ONLY.

7. TERMINAL CONNECTOR SHALL BE OF CAGE CLAMP TYPE VAG90/PHOENIX MAKE WAS INDICATED IN TABLE-1.

6. ITEM NO.-1 AND ITEM NO.-2 SHALL BE GIVEN SURFACE TREATMENT FOR ANTI-RUST & ANTI-CORROSION BEFORE FINISHING WITH POWDER COATING THICKNESS OF POWDER COATING SHALL NOT BE LESS THAN 60 MICRONS TO WHITE COLOR (SHADE NO.0+2 "IFB WHITE" OF M/S BERGER OR SIMILAR IN M/S ASIAN / M/S NEROLAC MAKE PAINT) WITH GLOSSY FINISH.

5. FRAMED MOUNTING DIMENSIONS ARE TO BE STRICTLY ADHERED TO BY JIS PUNCHING.

4. ALL DIMENSIONS IN MM.

K NOTE:-

ANY MANUAL ALTERATION SHALL AUTOMATICALLY RENDER THIS DRAWING INVALID. DETAIL DRS

FOR UNTOLERANCED DIMENSIONS REFER MDG00008

1	2	3	4	5	6	7
---	---	---	---	---	---	---

M
I
N
I
M
U
M
P
L
A
N
E
S
P
L
A
N
E
S

STARTING WITH "L" ARE INTERNAL REFERENCE LISTS ONLY AND ARE NOT FOR ISSUE.													
DATE OF FIRST ISSUE													
8	9	10	11	12	13	14	15	16	17	18	19	20	21

[illegible]

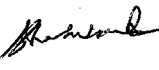
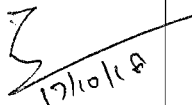

ICF AMENDMENT-01

ICF AMENDMENT 01 TO RDSO SPEC.NO. RDSO/PE/SPEC/TL/0091-2016 REV.1

SUB: SPECIFICATION FOR ENERGY EFFICIENT LED BASED LUMINAIRE UNITS FOR PASSENGER COACHES:

1. In Page No.21, Annexure – 3, S.No. 38 shall be added as follows:

Description	Type of fitting	Drg.No.
38. LED Foot step light fitting for LHB Non-AC second Class Cum luggage and Brake Van with compartment (LSLRD coach)	Type U (9W)	ICF/STD – 7-6-056

ICF AMENDMENT NO.01 TO RDSO SPEC.NO. RDSO/PE/SPEC/TL/0091- 2016 REV.1				PAGE 1 OF 1
DATE: 15.10.18	SSE/D	DY.CEE/D	CDE/E	PAGE NO.

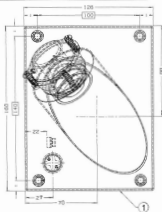
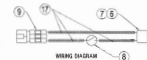


TABLE-1
DETAILS OF TERMINAL CONNECTOR

DESCRIPTION	CAT NO.	QTY/FITTING
MALE CONNECTOR WITH CASE CLAMP	1721-800 OF M/S WAGO AND SIMILAR IN PROPOSED WAGO	1
FEMALE CONNECTOR WITH CASE CLAMP	1721-800-000 OF M/S WAGO AND SIMILAR IN PROPOSED WAGO	1



1. ITEM-19 SHALL BE COLOUR ANODIZED TO MATCH WITH THE COLOUR OF THE FITTING AND SHALL BE SUPPLIED LOOSE FOR EACH FITTING.
2. SUITABLE STOPPER TO BE PROVIDED TO LOCK COUNTER-LOCK ROTATION OF THE SPOT UNIT.
3. ADEQUATE HEAT SINK WITH PROPER THERMAL MANAGEMENT SHALL BE PROVIDED WITH LED MODULE.
4. LED CIRCUIT MODULE SHALL BE THE PART OF THE LED (PROPOSED TYPE) MADE OF NON-METALLIC PET MATERIAL AND UNIVERSAL DESIGN SUITABLE FOR 120V AC/DC SUPPLY. THE OPERATING VOLTAGE SHALL VARY FROM 80V TO 140V WITH 10A SUPPLY.
5. EXTERIOR WIRING AND NOTCHES SHALL BE COVERED WITH TAP. WHICH FINE RETARDANT SLEEVES AND ONLY SECURED WITH THE HELP OF ITEM-14.
6. WIRING TO BE DONE WITH 1.5 SQ MM WITH CABLE OR 1-0.5MM DIA OF ROSS APPROVED WIRE ONLY.
7. ITEM-2 & 3 TO BE RAIL ANODIZED TO 100000 GRAY 5.
8. TERMINAL CONNECTOR SHALL BE OF CASE CLAMP TYPE WAGO-PROPOSED WAGO AS INDICATED IN THE TABLE-1.
9. ALL LEVEL, STING EXCLUDING HARDWARE SHALL BE GIVEN SURFACE TREATMENT FOR ANTI-ROST & ANTI-CORROSION BEFORE FINISHING WITH POWDER COATING TECHNOLOGY OF POWDER COATING SHALL NOT BE LESS THAN 60 MICRONS TO WHITE COLOUR (SHADE NO.02 "JIS WHITE" OF M/S WAGO OR SIMILAR IN M/S WAGO / M/S WAGO WAGO PAINTS) WITH GLOSSY FINISH.
10. ONLY TWO WELDING SHALL BE DONE AS PER REQUIREMENT NO OTHER WELDING IS ACCEPTABLE.
11. COATED RESISTIVE THERMISTORS ARE TO BE STRICTLY ADHERED TO BY JIS-MORCHING.
12. ALL DIMENSIONS IN MM.

NOTE:

DETAILS DROS STARTING WITH "L1" ARE INTERNAL REFERENCE LISTS ONLY AND ARE NOT FOR ISSUANCE

ANY MANUAL ALTERATION SHALL AUTOMATICALLY RENDER THIS DRAWING INVALID.

FOR UNTOLERANCED DIMENSIONS REFER H004000 DATE OF FIRST ISSUE 20/05/2016

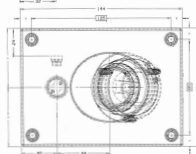
REV	DATE	DESCRIPTION	AUTHORITY
1	20/05/2016	1. ITEM NO-7 PART NO. CHANGED FROM 25.126.300.00 TO 25.126.300.00. 2. ITEM NO-8 PART NO. 40.31.15.20.00 OF M/S WAGO WAG- ADDED A DRAWING KEPTED ACCEPTED.	DECAD. 03/0000



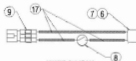
10	WIRETIE BEZEL, TYPING SCREW	1	1721-800-000 OF M/S WAGO AND SIMILAR IN PROPOSED WAGO	SEE NOTE-12
11	FLASH WASHER DECKS	3	1721-800-000 OF M/S WAGO AND SIMILAR IN PROPOSED WAGO	NIL
12	PIRE RETARDANT SLEEVE	1	NIL	AS REQUIRED
13	HEX AD NUT NO	1	1721-800-000 OF M/S WAGO AND SIMILAR IN PROPOSED WAGO	NIL
14	CHASSIS HOUSING ROHS	1	1721-800-000 OF M/S WAGO AND SIMILAR IN PROPOSED WAGO	NIL
15	PI-CLAMP	1	1721-800-000 OF M/S WAGO AND SIMILAR IN PROPOSED WAGO	ITEM-10
16	SPACER	1	1721-800-000 OF M/S WAGO AND SIMILAR IN PROPOSED WAGO	ITEM-10
17	SCREWING PIECE OF DM	3	1721-800-000 OF M/S WAGO AND SIMILAR IN PROPOSED WAGO	NIL
18	STEEL SPRING	3	1721-800-000 OF M/S WAGO AND SIMILAR IN PROPOSED WAGO	NIL
19	CHASSIS HOUSING ROHS	1	1721-800-000 OF M/S WAGO AND SIMILAR IN PROPOSED WAGO	NIL
20	TERMINAL CONNECTOR CASE CLAMP TYPE	1	NIL	SEE NOTE-5
21	PUSH BUTTON (PUSH ON-PUSH OFF)	1	NIL	NIL
22	LED CONNECTOR	1	NIL	SEE NOTE-8
23	LED WITH CIRCUIT MODULE	1	NIL	SEE NOTE-8
24	WITH CONDUCTIVE THERMAL & HEAT SINK	1	NIL	ITEM-7
25	HEX AD NUT NO	1	1721-800-000 OF M/S WAGO AND SIMILAR IN PROPOSED WAGO	ITEM-7
26	SPACER	1	1721-800-000 OF M/S WAGO AND SIMILAR IN PROPOSED WAGO	ITEM-7
27	PI-CLAMP	1	1721-800-000 OF M/S WAGO AND SIMILAR IN PROPOSED WAGO	ITEM-7
28	SCREWING PIECE OF DM	3	1721-800-000 OF M/S WAGO AND SIMILAR IN PROPOSED WAGO	ITEM-7
29	STEEL SPRING	3	1721-800-000 OF M/S WAGO AND SIMILAR IN PROPOSED WAGO	ITEM-7
30	CHASSIS HOUSING ROHS	1	1721-800-000 OF M/S WAGO AND SIMILAR IN PROPOSED WAGO	ITEM-7
31	TERMINAL CONNECTOR CASE CLAMP TYPE	1	NIL	SEE NOTE-5
32	PUSH BUTTON (PUSH ON-PUSH OFF)	1	NIL	NIL
33	LED CONNECTOR	1	NIL	SEE NOTE-8
34	LED WITH CIRCUIT MODULE	1	NIL	SEE NOTE-8
35	WITH CONDUCTIVE THERMAL & HEAT SINK	1	NIL	ITEM-7
36	HEX AD NUT NO	1	1721-800-000 OF M/S WAGO AND SIMILAR IN PROPOSED WAGO	ITEM-7
37	SPACER	1	1721-800-000 OF M/S WAGO AND SIMILAR IN PROPOSED WAGO	ITEM-7
38	PI-CLAMP	1	1721-800-000 OF M/S WAGO AND SIMILAR IN PROPOSED WAGO	ITEM-7
39	SCREWING PIECE OF DM	3	1721-800-000 OF M/S WAGO AND SIMILAR IN PROPOSED WAGO	ITEM-7
40	STEEL SPRING	3	1721-800-000 OF M/S WAGO AND SIMILAR IN PROPOSED WAGO	ITEM-7
41	CHASSIS HOUSING ROHS	1	1721-800-000 OF M/S WAGO AND SIMILAR IN PROPOSED WAGO	ITEM-7
42	TERMINAL CONNECTOR CASE CLAMP TYPE	1	NIL	SEE NOTE-5
43	PUSH BUTTON (PUSH ON-PUSH OFF)	1	NIL	NIL
44	LED CONNECTOR	1	NIL	SEE NOTE-8
45	LED WITH CIRCUIT MODULE	1	NIL	SEE NOTE-8
46	WITH CONDUCTIVE THERMAL & HEAT SINK	1	NIL	ITEM-7
47	HEX AD NUT NO	1	1721-800-000 OF M/S WAGO AND SIMILAR IN PROPOSED WAGO	ITEM-7
48	SPACER	1	1721-800-000 OF M/S WAGO AND SIMILAR IN PROPOSED WAGO	ITEM-7
49	PI-CLAMP	1	1721-800-000 OF M/S WAGO AND SIMILAR IN PROPOSED WAGO	ITEM-7
50	SCREWING PIECE OF DM	3	1721-800-000 OF M/S WAGO AND SIMILAR IN PROPOSED WAGO	ITEM-7
51	STEEL SPRING	3	1721-800-000 OF M/S WAGO AND SIMILAR IN PROPOSED WAGO	ITEM-7
52	CHASSIS HOUSING ROHS	1	1721-800-000 OF M/S WAGO AND SIMILAR IN PROPOSED WAGO	ITEM-7
53	TERMINAL CONNECTOR CASE CLAMP TYPE	1	NIL	SEE NOTE-5
54	PUSH BUTTON (PUSH ON-PUSH OFF)	1	NIL	NIL
55	LED CONNECTOR	1	NIL	SEE NOTE-8
56	LED WITH CIRCUIT MODULE	1	NIL	SEE NOTE-8
57	WITH CONDUCTIVE THERMAL & HEAT SINK	1	NIL	ITEM-7
58	HEX AD NUT NO	1	1721-800-000 OF M/S WAGO AND SIMILAR IN PROPOSED WAGO	ITEM-7
59	SPACER	1	1721-800-000 OF M/S WAGO AND SIMILAR IN PROPOSED WAGO	ITEM-7
60	PI-CLAMP	1	1721-800-000 OF M/S WAGO AND SIMILAR IN PROPOSED WAGO	ITEM-7
61	SCREWING PIECE OF DM	3	1721-800-000 OF M/S WAGO AND SIMILAR IN PROPOSED WAGO	ITEM-7
62	STEEL SPRING	3	1721-800-000 OF M/S WAGO AND SIMILAR IN PROPOSED WAGO	ITEM-7
63	CHASSIS HOUSING ROHS	1	1721-800-000 OF M/S WAGO AND SIMILAR IN PROPOSED WAGO	ITEM-7
64	TERMINAL CONNECTOR CASE CLAMP TYPE	1	NIL	SEE NOTE-5
65	PUSH BUTTON (PUSH ON-PUSH OFF)	1	NIL	NIL
66	LED CONNECTOR	1	NIL	SEE NOTE-8
67	LED WITH CIRCUIT MODULE	1	NIL	SEE NOTE-8
68	WITH CONDUCTIVE THERMAL & HEAT SINK	1	NIL	ITEM-7
69	HEX AD NUT NO	1	1721-800-000 OF M/S WAGO AND SIMILAR IN PROPOSED WAGO	ITEM-7
70	SPACER	1	1721-800-000 OF M/S WAGO AND SIMILAR IN PROPOSED WAGO	ITEM-7
71	PI-CLAMP	1	1721-800-000 OF M/S WAGO AND SIMILAR IN PROPOSED WAGO	ITEM-7
72	SCREWING PIECE OF DM	3	1721-800-000 OF M/S WAGO AND SIMILAR IN PROPOSED WAGO	ITEM-7
73	STEEL SPRING	3	1721-800-000 OF M/S WAGO AND SIMILAR IN PROPOSED WAGO	ITEM-7
74	CHASSIS HOUSING ROHS	1	1721-800-000 OF M/S WAGO AND SIMILAR IN PROPOSED WAGO	ITEM-7
75	TERMINAL CONNECTOR CASE CLAMP TYPE	1	NIL	SEE NOTE-5
76	PUSH BUTTON (PUSH ON-PUSH OFF)	1	NIL	NIL
77	LED CONNECTOR	1	NIL	SEE NOTE-8
78	LED WITH CIRCUIT MODULE	1	NIL	SEE NOTE-8
79	WITH CONDUCTIVE THERMAL & HEAT SINK	1	NIL	ITEM-7
80	HEX AD NUT NO	1	1721-800-000 OF M/S WAGO AND SIMILAR IN PROPOSED WAGO	ITEM-7
81	SPACER	1	1721-800-000 OF M/S WAGO AND SIMILAR IN PROPOSED WAGO	ITEM-7
82	PI-CLAMP	1	1721-800-000 OF M/S WAGO AND SIMILAR IN PROPOSED WAGO	ITEM-7
83	SCREWING PIECE OF DM	3	1721-800-000 OF M/S WAGO AND SIMILAR IN PROPOSED WAGO	ITEM-7
84	STEEL SPRING	3	1721-800-000 OF M/S WAGO AND SIMILAR IN PROPOSED WAGO	ITEM-7
85	CHASSIS HOUSING ROHS	1	1721-800-000 OF M/S WAGO AND SIMILAR IN PROPOSED WAGO	ITEM-7
86	TERMINAL CONNECTOR CASE CLAMP TYPE	1	NIL	SEE NOTE-5
87	PUSH BUTTON (PUSH ON-PUSH OFF)	1	NIL	NIL
88	LED CONNECTOR	1	NIL	SEE NOTE-8
89	LED WITH CIRCUIT MODULE	1	NIL	SEE NOTE-8
90	WITH CONDUCTIVE THERMAL & HEAT SINK	1	NIL	ITEM-7
91	HEX AD NUT NO	1	1721-800-000 OF M/S WAGO AND SIMILAR IN PROPOSED WAGO	ITEM-7
92	SPACER	1	1721-800-000 OF M/S WAGO AND SIMILAR IN PROPOSED WAGO	ITEM-7
93	PI-CLAMP	1	1721-800-000 OF M/S WAGO AND SIMILAR IN PROPOSED WAGO	ITEM-7
94	SCREWING PIECE OF DM	3	1721-800-000 OF M/S WAGO AND SIMILAR IN PROPOSED WAGO	ITEM-7
95	STEEL SPRING	3	1721-800-000 OF M/S WAGO AND SIMILAR IN PROPOSED WAGO	ITEM-7
96	CHASSIS HOUSING ROHS	1	1721-800-000 OF M/S WAGO AND SIMILAR IN PROPOSED WAGO	ITEM-7
97	TERMINAL CONNECTOR CASE CLAMP TYPE	1	NIL	SEE NOTE-5
98	PUSH BUTTON (PUSH ON-PUSH OFF)	1	NIL	NIL
99	LED CONNECTOR	1	NIL	SEE NOTE-8
100	LED WITH CIRCUIT MODULE	1	NIL	SEE NOTE-8
101	WITH CONDUCTIVE THERMAL & HEAT SINK	1	NIL	ITEM-7
102	HEX AD NUT NO	1	1721-800-000 OF M/S WAGO AND SIMILAR IN PROPOSED WAGO	ITEM-7
103	SPACER	1	1721-800-000 OF M/S WAGO AND SIMILAR IN PROPOSED WAGO	ITEM-7
104	PI-CLAMP	1	1721-800-000 OF M/S WAGO AND SIMILAR IN PROPOSED WAGO	ITEM-7
105	SCREWING PIECE OF DM	3	1721-800-000 OF M/S WAGO AND SIMILAR IN PROPOSED WAGO	ITEM-7
106	STEEL SPRING	3	1721-800-000 OF M/S WAGO AND SIMILAR IN PROPOSED WAGO	ITEM-7
107	CHASSIS HOUSING ROHS	1	1721-800-000 OF M/S WAGO AND SIMILAR IN PROPOSED WAGO	ITEM-7
108	TERMINAL CONNECTOR CASE CLAMP TYPE	1	NIL	SEE NOTE-5
109	PUSH BUTTON (PUSH ON-PUSH OFF)	1	NIL	NIL
110	LED CONNECTOR	1	NIL	SEE NOTE-8
111	LED WITH CIRCUIT MODULE	1	NIL	SEE NOTE-8
112	WITH CONDUCTIVE THERMAL & HEAT SINK	1	NIL	ITEM-7
113	HEX AD NUT NO	1	1721-800-000 OF M/S WAGO AND SIMILAR IN PROPOSED WAGO	ITEM-7
114	SPACER	1	1721-800-000 OF M/S WAGO AND SIMILAR IN PROPOSED WAGO	ITEM-7
115	PI-CLAMP	1	1721-800-000 OF M/S WAGO AND SIMILAR IN PROPOSED WAGO	ITEM-7
116	SCREWING PIECE OF DM	3	1721-800-000 OF M/S WAGO AND SIMILAR IN PROPOSED WAGO	ITEM-7
117	STEEL SPRING	3	1721-800-000 OF M/S WAGO AND SIMILAR IN PROPOSED WAGO	ITEM-7
118	CHASSIS HOUSING ROHS	1	1721-800-000 OF M/S WAGO AND SIMILAR IN PROPOSED WAGO	ITEM-7
119	TERMINAL CONNECTOR CASE CLAMP TYPE	1	NIL	SEE NOTE-5
120	PUSH BUTTON (PUSH ON-PUSH OFF)	1	NIL	NIL
121	LED CONNECTOR	1	NIL	SEE NOTE-8
122	LED WITH CIRCUIT MODULE	1	NIL	SEE NOTE-8
123	WITH CONDUCTIVE THERMAL & HEAT SINK	1	NIL	ITEM-7
124	HEX AD NUT NO	1	1721-800-000 OF M/S WAGO AND SIMILAR IN PROPOSED WAGO	ITEM-7
125	SPACER	1	1721-800-000 OF M/S WAGO AND SIMILAR IN PROPOSED WAGO	ITEM-7
126	PI-CLAMP	1	1721-800-000 OF M/S WAGO AND SIMILAR IN PROPOSED WAGO	ITEM-7
127	SCREWING PIECE OF DM	3	1721-800-000 OF M/S WAGO AND SIMILAR IN PROPOSED WAGO	ITEM-7
128	STEEL SPRING	3	1721-800-000 OF M/S WAGO AND SIMILAR IN PROPOSED WAGO	ITEM-7
129	CHASSIS HOUSING ROHS	1	1721-800-000 OF M/S WAGO AND SIMILAR IN PROPOSED WAGO	ITEM-7
130	TERMINAL CONNECTOR CASE CLAMP TYPE	1	NIL	SEE NOTE-5
131	PUSH BUTTON (PUSH ON-PUSH OFF)	1	NIL	NIL
132	LED CONNECTOR	1	NIL	SEE NOTE-8
133	LED WITH CIRCUIT MODULE	1	NIL	SEE NOTE-8
134	WITH CONDUCTIVE THERMAL & HEAT SINK	1	NIL	ITEM-7
135	HEX AD NUT NO	1	1721-800-000 OF M/S WAGO AND SIMILAR IN PROPOSED WAGO	ITEM-7
136	SPACER	1	1721-800-000 OF M/S WAGO AND SIMILAR IN PROPOSED WAGO	ITEM-7
137	PI-CLAMP	1	1721-800-000 OF M/S WAGO AND SIMILAR IN PROPOSED WAGO	ITEM-7
138	SCREWING PIECE OF DM	3	1721-800-000 OF M/S WAGO AND SIMILAR IN PROPOSED WAGO	ITEM-7
139	STEEL SPRING	3	1721-800-000 OF M/S WAGO AND SIMILAR IN PROPOSED WAGO	ITEM-7
140	CHASSIS HOUSING ROHS	1	1721-800-000 OF M/S WAGO AND SIMILAR IN PROPOSED WAGO	ITEM-7
141	TERMINAL CONNECTOR CASE CLAMP TYPE	1	NIL	SEE NOTE-5
142	PUSH BUTTON (PUSH ON-PUSH OFF)	1	NIL	NIL
143	LED CONNECTOR	1	NIL	SEE NOTE-8
144	LED WITH CIRCUIT MODULE	1	NIL	SEE NOTE-8
145	WITH CONDUCTIVE THERMAL & HEAT SINK	1	NIL	ITEM-7
146	HEX AD NUT NO	1	1721-800-000 OF M/S WAGO AND SIMILAR IN PROPOSED WAGO	ITEM-7
147	SPACER	1	1721-800-000 OF M/S WAGO AND SIMILAR IN PROPOSED WAGO	ITEM-7
148	PI-CLAMP	1	1721-800-000 OF M/S WAGO AND SIMILAR IN PROPOSED WAGO	ITEM-7
149	SCREWING PIECE OF DM	3	1721-800-000 OF M/S WAGO AND SIMILAR IN PROPOSED WAGO	ITEM-7
150	STEEL SPRING	3	1721-800-000 OF M/S WAGO AND SIMILAR IN PROPOSED WAGO	ITEM-7
151	CHASSIS HOUSING ROHS	1	1721-800-000 OF M/S WAGO AND SIMILAR IN PROPOSED WAGO	ITEM-7
152	TERMINAL CONNECTOR CASE CLAMP TYPE	1	NIL	SEE NOTE-5
153	PUSH BUTTON (PUSH ON-PUSH OFF)	1	NIL	NIL
154	LED CONNECTOR	1	NIL	SEE NOTE-8
155	LED WITH CIRCUIT MODULE	1	NIL	SEE NOTE-8
156	WITH CONDUCTIVE THERMAL & HEAT SINK	1	NIL	ITEM-7
157	HEX AD NUT NO	1	1721-800-000 OF M/S WAGO AND SIMILAR IN PROPOSED WAGO	ITEM-7
158	SPACER	1	1721-800-000 OF M/S WAGO AND SIMILAR IN PROPOSED WAGO	ITEM-7
159	PI-CLAMP	1	1721-800-000 OF M/S WAGO AND SIMILAR IN PROPOSED WAGO	ITEM-7
160	SCREWING PIECE OF DM	3	1721-800-000 OF M/S WAGO AND SIMILAR IN PROPOSED WAGO	ITEM-7
161	STEEL SPRING	3	1721-800-000 OF M/S WAGO AND SIMILAR IN PROPOSED WAGO	ITEM-7
162	CHASSIS HOUSING ROHS	1	1721-800-000 OF M/S WAGO AND SIMILAR IN PROPOSED WAGO	ITEM-7
163	TERMINAL CONNECTOR CASE CLAMP TYPE	1	NIL	SEE NOTE-5
164	PUSH BUTTON (PUSH ON-PUSH OFF)	1	NIL	NIL
165	LED CONNECTOR	1	NIL	SEE NOTE-8
166	LED WITH CIRCUIT MODULE	1	NIL	SEE NOTE-8
167	WITH CONDUCTIVE THERMAL & HEAT SINK	1	NIL	ITEM-7
168	HEX AD NUT NO	1	1721-800-000 OF M/S WAGO AND SIMILAR IN PROPOSED WAGO	ITEM-7
169	SPACER	1	1721-800-000 OF M/S WAGO AND SIMILAR IN PROPOSED WAGO	ITEM-7
170	PI-CLAMP	1	1721-800-000 OF M/S WAGO AND SIMILAR IN PROPOSED WAGO	ITEM-7
171	SCREWING PIECE OF DM	3	1721-800-000 OF M/S WAGO AND SIMILAR IN PROPOSED WAGO	ITEM-7
172	STEEL SPRING	3	1721-800-000 OF M/S WAGO AND SIMILAR IN PROPOSED WAGO	ITEM-7
173	CHASSIS HOUSING ROHS	1	1721-800-000 OF M/S WAGO AND SIMILAR IN PROPOSED WAGO	ITEM-7
174	TERMINAL CONNECTOR CASE CLAMP TYPE	1	NIL	SEE NOTE-5
175	PUSH BUTTON (PUSH ON-PUSH OFF)	1	NIL	NIL
176	LED CONNECTOR	1	NIL	SEE NOTE-8
177	LED WITH CIRCUIT MODULE	1	NIL	SEE NOTE-8
178	WITH CONDUCTIVE THERMAL & HEAT SINK	1	NIL	ITEM-7
179	HEX AD NUT NO	1	1721-800-000 OF M/S WAGO AND SIMILAR IN PROPOSED WAGO	ITEM-7
180	SPACER	1	1721-800-000 OF M/S WAGO AND SIMILAR IN PROPOSED WAGO	ITEM-7
181	PI-CLAMP	1	1721-800-000 OF M/S WAGO AND SIMILAR IN PROPOSED WAGO	ITEM-7
182	SCREWING PIECE OF DM	3	1721-800-000 OF M/S WAGO AND SIMILAR IN PROPOSED WAGO	ITEM-7
183	STEEL SPRING	3	1721-800-000 OF M/S WAGO AND SIMILAR IN PROPOSED WAGO	ITEM-7
184	CHASSIS HOUSING ROHS	1	1721-800-000 OF M/S WAGO AND SIMILAR IN PROPOSED WAGO	ITEM-7
185	TERMINAL CONNECTOR CASE CLAMP TYPE	1	NIL	SEE NOTE-5
186	PUSH BUTTON (PUSH ON-PUSH OFF)	1	NIL	NIL
187	LED CONNECTOR	1	NIL	SEE NOTE-8
188	LED WITH CIRCUIT MODULE	1	NIL	SEE NOTE-8
189	WITH CONDUCTIVE THERMAL & HEAT SINK	1	NIL	ITEM-7
190	HEX AD NUT NO	1	17	



Study View



607706 - VIEW



WIRING DIAGRAM

TABLE 4

DETAILS OF TERMINAL CONNECTOR

DESCRIPTION	CAT. NO.	QTY./FITTING
MALE CORRECTOR WITH CASE CLAMP	Q71-162 OF WTS WAGO AND SIMILAR IN POLYMER WAGO	1
FEMALE CORRECTOR WITH CASE CLAMP	Q71-163 OF WTS WAGO AND SIMILAR IN POLYMER WAGO	1

17. ITEM-4 SHALL BE COLOUR AND/TO MATCH WITH THE COLOUR SHAD OF THE FITTING AND SHALL BE SUPPLIED LARGE FOR EACH FITTING.
18. SUFFICIENT STRAPPS TO BE PROVIDED TO LOCK CLOAK-ANTI-CLOAK RESTRICTING OF THE SPOT UNIT.
19. COLOURS AND FINISH TO BE PROVIDED TO THE COLOUR SHAD OF THE FITTING AND SHALL BE SUPPLIED LARGE FOR EACH FITTING.
20. LED CIRCUIT MODULE SHALL BE THE PART OF THE LED'S INDEPENDENT PART NAME OF AN ANTI-CORROSION BEYOND INTERNAL AND UNIVERSAL DESIGN.
21. SUFFICIENT FOR EACH ITEM COLOUR SAMPLE. THE OPERATING HOURS SHALL BEYOND FROM 80% TO 100% WITH 10% MIN RIPLE.
22. COLOURING AND FINISH TO BE PROVIDED TO THE COLOUR SHAD OF THE FITTING AND SHALL BE SUPPLIED LARGE FOR EACH FITTING.
23. STRAPPS TO BE DONE WITH A 50 MM PLY CANAL OR 50 MM CANAL OF ROSS APPROVED MARK ONLY.
24. STRAPPS TO BE DONE WITH A 50 MM PLY CANAL TO 100% MIN. SPAN.
25. COLOURING STRAPPS SHALL BE OF COLOUR COLOUR.
26. ALL STEEL ITEMS INCLUDING ANVILS SHALL BE GIVEN BAKING TREATMENT FOR ANTI-CORROSION BEYOND FINISHING WITH POWDER COATING TECHNIQUE OF POWDER COATING SHALL BE DONE WITH AN ANVILS TO 100% COLOUR (BANK NO. 62) WITH 10% OF MIN BEYOND COLOURING WITH ANVILS.
27. ONLY THE FITTING SHALL BE DONE FOR REBUILDING NO OTHER REBUILDING IS ACCEPTABLE.
28. FINISHING DIMENSIONS ARE TO BE OFFICE, ASHARED TO 87.10 POWER/100.
29. DIMENSIONS TO BE

1997, 1998).

DETAIL DATES STARTING WITH "L1" ARE INTERNAL REFERENCE LISTS ONLY AND ARE NOT FOR ISSUE

ANY MANUAL ALTERATION SHALL AUTOMATICALLY RENDER THIS DRAWING INVALID.

FOR UNTOLEBORN DIMENSIONS PETER HOGGARD	DATE OF FIRST IMAGE	20/05/2016
---	---------------------	------------

[illegible]

15	PULL UP HEAD CONNECTOR TAPPING SCREW 3/16-20X1/2	4	2P (REPLACES) P-14	2P (REPLACES) P-14	SEE NOTE-12
16	PLAIN WASHER 3/16	1	2P (REPLACES) P-14, P-18	NIL	NIL
17	7/16 HEX AGENT NUTS 12-15, 20-25, 30-35	4	NIL	NIL	AS REQUIRED
18	HEX AGENT NUT	1	2P (REPLACES) P-14, A2-70	2P (REPLACES) P-14, A2-70	NIL
19	CHEESE HEAD SCREW NUTS	1	2P (REPLACES) P-14, A2-70	2P (REPLACES) P-14, A2-70	NIL
20	CLAMP	1	2P (REPLACES) P-14, A2-70	2P (REPLACES) P-14, A2-70	NIL
21	BRACKET	1	2P (REPLACES) P-14, A2-70	2P (REPLACES) P-14, A2-70	172W-8
22	SCREWING POST 3/8-24	1	2P (REPLACES) P-14, A2-70	2P (REPLACES) P-14, A2-70	172W-8
23	SCREWING POST 3/8-24	1	2P (REPLACES) P-14, A2-70	2P (REPLACES) P-14, A2-70	NIL
24	SCREWING POST 3/8-24	1	2P (REPLACES) P-14, A2-70	2P (REPLACES) P-14, A2-70	NIL
25	CHEESE HEAD SCREW NUTS	3	2P (REPLACES) P-14, A2-70	2P (REPLACES) P-14, A2-70	NIL
26	TERMINAL CONNECTOR CASE CLAMP	1	NIL	NIL	SEE NOTE-6
27	PUSH BUTTON PUSH ON - PUSH OFF 1/4" 1/4" TERMINAL CORD	1	NIL	NIL	SEE NOTE-6
28	LED CONNECTION	1	2P (REPLACES) P-14, A2-70	2P (REPLACES) P-14, A2-70	SEE NOTE-6
29	LED WITH CIRCLET NEEDLE WITH 1/4" TAPPING SCREW & HEX NUT	1	NIL	NIL	SEE NOTE-6
30	1/4" TAPPING SCREW	1	2P (REPLACES) P-14, A2-70	2P (REPLACES) P-14, A2-70	172W-8
31	1/4" TAPPING SCREW	1	2P (REPLACES) P-14, A2-70	2P (REPLACES) P-14, A2-70	172W-8
32	1/4" TAPPING SCREW	1	2P (REPLACES) P-14, A2-70	2P (REPLACES) P-14, A2-70	172W-8
33	1/4" TAPPING SCREW	1	2P (REPLACES) P-14, A2-70	2P (REPLACES) P-14, A2-70	172W-8
34	1/4" TAPPING SCREW	1	2P (REPLACES) P-14, A2-70	2P (REPLACES) P-14, A2-70	172W-8
35	1/4" TAPPING SCREW	1	2P (REPLACES) P-14, A2-70	2P (REPLACES) P-14, A2-70	172W-8
36	1/4" TAPPING SCREW	1	2P (REPLACES) P-14, A2-70	2P (REPLACES) P-14, A2-70	172W-8
37	1/4" TAPPING SCREW	1	2P (REPLACES) P-14, A2-70	2P (REPLACES) P-14, A2-70	172W-8
38	1/4" TAPPING SCREW	1	2P (REPLACES) P-14, A2-70	2P (REPLACES) P-14, A2-70	172W-8
39	1/4" TAPPING SCREW	1	2P (REPLACES) P-14, A2-70	2P (REPLACES) P-14, A2-70	172W-8
40	1/4" TAPPING SCREW	1	2P (REPLACES) P-14, A2-70	2P (REPLACES) P-14, A2-70	172W-8
41	1/4" TAPPING SCREW	1	2P (REPLACES) P-14, A2-70	2P (REPLACES) P-14, A2-70	172W-8
42	1/4" TAPPING SCREW	1	2P (REPLACES) P-14, A2-70	2P (REPLACES) P-14, A2-70	172W-8
43	1/4" TAPPING SCREW	1	2P (REPLACES) P-14, A2-70	2P (REPLACES) P-14, A2-70	172W-8
44	1/4" TAPPING SCREW	1	2P (REPLACES) P-14, A2-70	2P (REPLACES) P-14, A2-70	172W-8
45	1/4" TAPPING SCREW	1	2P (REPLACES) P-14, A2-70	2P (REPLACES) P-14, A2-70	172W-8
46	1/4" TAPPING SCREW	1	2P (REPLACES) P-14, A2-70	2P (REPLACES) P-14, A2-70	172W-8
47	1/4" TAPPING SCREW	1	2P (REPLACES) P-14, A2-70	2P (REPLACES) P-14, A2-70	172W-8
48	1/4" TAPPING SCREW	1	2P (REPLACES) P-14, A2-70	2P (REPLACES) P-14, A2-70	172W-8
49	1/4" TAPPING SCREW	1	2P (REPLACES) P-14, A2-70	2P (REPLACES) P-14, A2-70	172W-8
50	1/4" TAPPING SCREW	1	2P (REPLACES) P-14, A2-70	2P (REPLACES) P-14, A2-70	172W-8
51	1/4" TAPPING SCREW	1	2P (REPLACES) P-14, A2-70	2P (REPLACES) P-14, A2-70	172W-8
52	1/4" TAPPING SCREW	1	2P (REPLACES) P-14, A2-70	2P (REPLACES) P-14, A2-70	172W-8
53	1/4" TAPPING SCREW	1	2P (REPLACES) P-14, A2-70	2P (REPLACES) P-14, A2-70	172W-8
54	1/4" TAPPING SCREW	1	2P (REPLACES) P-14, A2-70	2P (REPLACES) P-14, A2-70	172W-8
55	1/4" TAPPING SCREW	1	2P (REPLACES) P-14, A2-70	2P (REPLACES) P-14, A2-70	172W-8
56	1/4" TAPPING SCREW	1	2P (REPLACES) P-14, A2-70	2P (REPLACES) P-14, A2-70	172W-8
57	1/4" TAPPING SCREW	1	2P (REPLACES) P-14, A2-70	2P (REPLACES) P-14, A2-70	172W-8
58	1/4" TAPPING SCREW	1	2P (REPLACES) P-14, A2-70	2P (REPLACES) P-14, A2-70	172W-8
59	1/4" TAPPING SCREW	1	2P (REPLACES) P-14, A2-70	2P (REPLACES) P-14, A2-70	172W-8
60	1/4" TAPPING SCREW	1	2P (REPLACES) P-14, A2-70	2P (REPLACES) P-14, A2-70	172W-8
61	1/4" TAPPING SCREW	1	2P (REPLACES) P-14, A2-70	2P (REPLACES) P-14, A2-70	172W-8
62	1/4" TAPPING SCREW	1	2P (REPLACES) P-14, A2-70	2P (REPLACES) P-14, A2-70	172W-8
63	1/4" TAPPING SCREW	1	2P (REPLACES) P-14, A2-70	2P (REPLACES) P-14, A2-70	172W-8
64	1/4" TAPPING SCREW	1	2P (REPLACES) P-14, A2-70	2P (REPLACES) P-14, A2-70	172W-8
65	1/4" TAPPING SCREW	1	2P (REPLACES) P-14, A2-70	2P (REPLACES) P-14, A2-70	172W-8
66	1/4" TAPPING SCREW	1	2P (REPLACES) P-14, A2-70	2P (REPLACES) P-14, A2-70	172W-8
67	1/4" TAPPING SCREW	1	2P (REPLACES) P-14, A2-70	2P (REPLACES) P-14, A2-70	172W-8
68	1/4" TAPPING SCREW	1	2P (REPLACES) P-14, A2-70	2P (REPLACES) P-14, A2-70	172W-8
69	1/4" TAPPING SCREW	1	2P (REPLACES) P-14, A2-70	2P (REPLACES) P-14, A2-70	172W-8
70	1/4" TAPPING SCREW	1	2P (REPLACES) P-14, A2-70	2P (REPLACES) P-14, A2-70	172W-8
71	1/4" TAPPING SCREW	1	2P (REPLACES) P-14, A2-70	2P (REPLACES) P-14, A2-70	172W-8
72	1/4" TAPPING SCREW	1	2P (REPLACES) P-14, A2-70	2P (REPLACES) P-14, A2-70	172W-8
73	1/4" TAPPING SCREW	1	2P (REPLACES) P-14, A2-70	2P (REPLACES) P-14, A2-70	172W-8
74	1/4" TAPPING SCREW	1	2P (REPLACES) P-14, A2-70	2P (REPLACES) P-14, A2-70	172W-8
75	1/4" TAPPING SCREW	1	2P (REPLACES) P-14, A2-70	2P (REPLACES) P-14, A2-70	172W-8
76	1/4" TAPPING SCREW	1	2P (REPLACES) P-14, A2-70	2P (REPLACES) P-14, A2-70	172W-8
77	1/4" TAPPING SCREW	1	2P (REPLACES) P-14, A2-70	2P (REPLACES) P-14, A2-70	172W-8
78	1/4" TAPPING SCREW	1	2P (REPLACES) P-14, A2-70	2P (REPLACES) P-14, A2-70	172W-8
79	1/4" TAPPING SCREW	1	2P (REPLACES) P-14, A2-70	2P (REPLACES) P-14, A2-70	172W-8
80	1/4" TAPPING SCREW	1	2P (REPLACES) P-14, A2-70	2P (REPLACES) P-14, A2-70	172W-8
81	1/4" TAPPING SCREW	1	2P (REPLACES) P-14, A2-70	2P (REPLACES) P-14, A2-70	172W-8
82	1/4" TAPPING SCREW	1	2P (REPLACES) P-14, A2-70	2P (REPLACES) P-14, A2-70	172W-8
83	1/4" TAPPING SCREW	1	2P (REPLACES) P-14, A2-70	2P (REPLACES) P-14, A2-70	172W-8
84	1/4" TAPPING SCREW	1	2P (REPLACES) P-14, A2-70	2P (REPLACES) P-14, A2-70	172W-8
85	1/4" TAPPING SCREW	1	2P (REPLACES) P-14, A2-70	2P (REPLACES) P-14, A2-70	172W-8
86	1/4" TAPPING SCREW	1	2P (REPLACES) P-14, A2-70	2P (REPLACES) P-14, A2-70	172W-8
87	1/4" TAPPING SCREW	1	2P (REPLACES) P-14, A2-70	2P (REPLACES) P-14, A2-70	172W-8
88	1/4" TAPPING SCREW	1	2P (REPLACES) P-14, A2-70	2P (REPLACES) P-14, A2-70	172W-8
89	1/4" TAPPING SCREW	1	2P (REPLACES) P-14, A2-70	2P (REPLACES) P-14, A2-70	172W-8
90	1/4" TAPPING SCREW	1	2P (REPLACES) P-14, A2-70	2P (REPLACES) P-14, A2-70	172W-8
91	1/4" TAPPING SCREW	1	2P (REPLACES) P-14, A2-70	2P (REPLACES) P-14, A2-70	172W-8
92	1/4" TAPPING SCREW	1	2P (REPLACES) P-14, A2-70	2P (REPLACES) P-14, A2-70	172W-8
93	1/4" TAPPING SCREW	1	2P (REPLACES) P-14, A2-70	2P (REPLACES) P-14, A2-70	172W-8
94	1/4" TAPPING SCREW	1	2P (REPLACES) P-14, A2-70	2P (REPLACES) P-14, A2-70	172W-8
95	1/4" TAPPING SCREW	1	2P (REPLACES) P-14, A2-70	2P (REPLACES) P-14, A2-70	172W-8
96	1/4" TAPPING SCREW	1	2P (REPLACES) P-14, A2-70	2P (REPLACES) P-14, A2-70	172W-8
97	1/4" TAPPING SCREW	1	2P (REPLACES) P-14, A2-70	2P (REPLACES) P-14, A2-70	172W-8
98	1/4" TAPPING SCREW	1	2P (REPLACES) P-14, A2-70	2P (REPLACES) P-14, A2-70	172W-8
99	1/4" TAPPING SCREW	1	2P (REPLACES) P-14, A2-70	2P (REPLACES) P-14, A2-70	172W-8
100	1/4" TAPPING SCREW	1	2P (REPLACES) P-14, A2-70	2P (REPLACES) P-14, A2-70	172W-8

[illegible]

