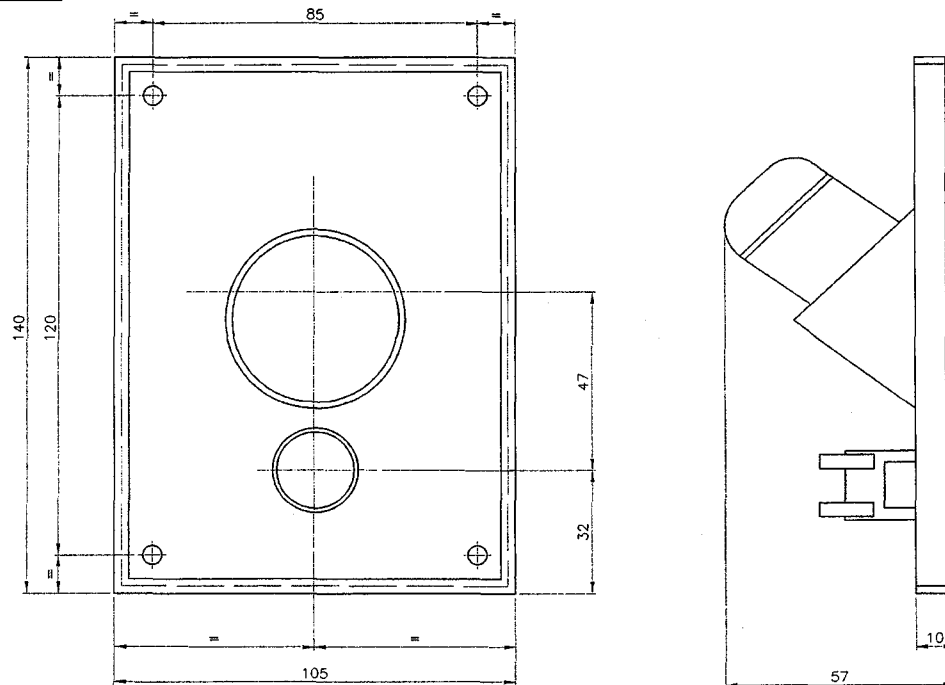


ICF/STD-7-6-051

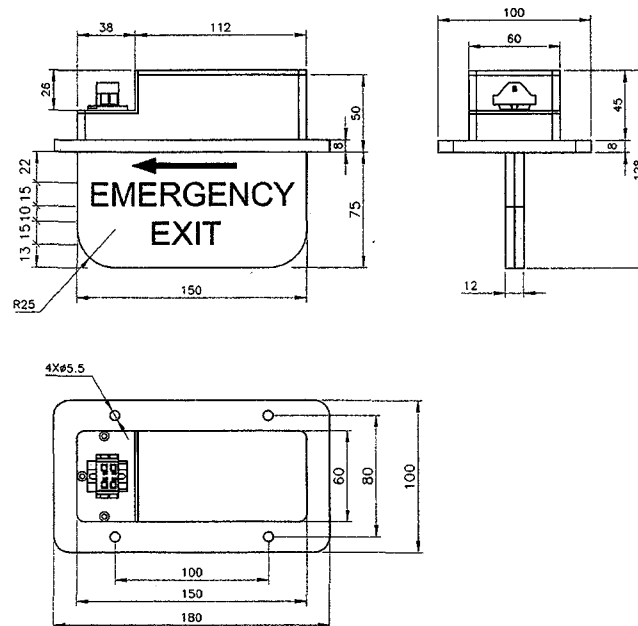


GROUP: 7-6		SUPERSEDED BY:	
LED LIGHT FITTING, TYPE-F5 (2W) FOR BERTH READING LIGHT FOR CONVENTIONAL AC COACH (AS PER SPEC. NO. RDSO/PE/SPEC/TL/0091-2016, REV.1)		SUPERSEDES:	
		SCALE	SSE/D
		1:2.5	CHD.
		ALT.	RATHARAJA
CAD FILE: ED-CAD\140 7-6 051---00.DWG		ALT	
DATA CODE NO. 140		INTEGRAL COACH FACTORY CHENNAI - 38	
INDIAN RAILWAY STANDARDS		ICF/STD-7-6-051	
SHEET 1 OF 1		FORM IR A3 420x300	

ASSEMBLY DRAWINGS			
ALT.	DATE OF LATEST ALT.	DATE OF FIRST ISSUE	DY.CEE/D
	20-05-2016		

ICF/STD-7-6-049

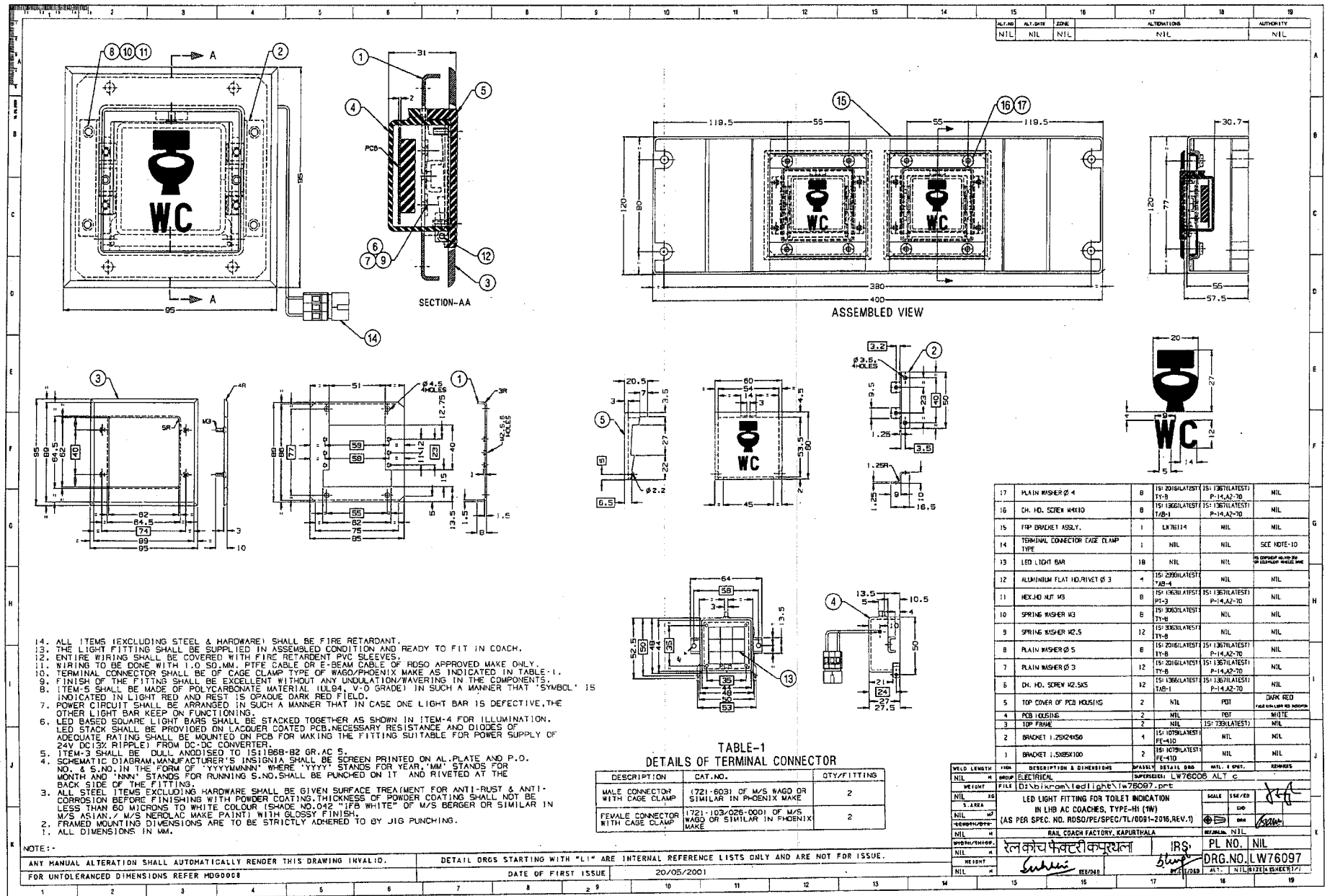
ALTERATIONS



GROUP: 7-6				SUPERSEDED BY:	
LED LIGHT FITTING, TYPE-G (1W)				SUPERSEDES:	
FOR EMERGENCY EXIT INDICATION				SCALE	
(AS PER SPEC. NO. RDSO/PE/SPEC/TL/0091-2016, REV.1)				1:2.5	
CAD FILE: ED-CAD\140 7-6 049---00.DWG				SSE/D	
DATA CODE NO. 140				CHD.	
INDIAN RAILWAY STANDARDS				ALT.	
SHEET 1 OF 1				DRN	
ICF/STD-7-6-049				RATHARAJA	

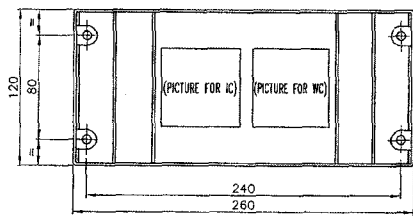
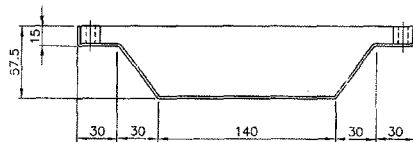
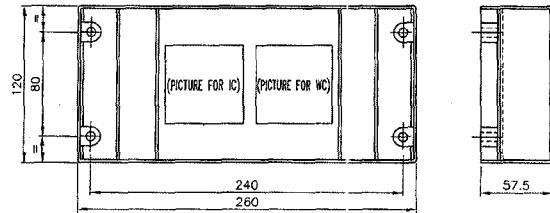
ASSEMBLY DRAWINGS			
20-05-2016	3	20/05/16	
ALT.	DATE OF LATEST ALT.	DATE OF FIRST ISSUE	DY.CEE/D

FORM IR A3 420x300

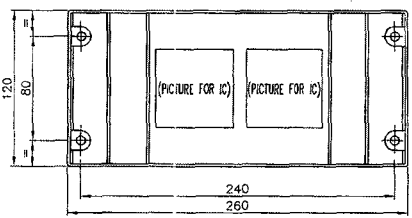


ICF/STD-7-6-052

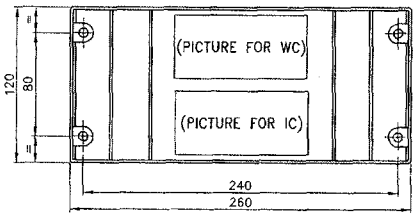
ALTERATIONS
 07/2016
 TOILET INDICATION LIGHT
 FOR WGACCN, WGSCWAC, WGSZAC
 AND WGFSCWAC COACHES
 ADDED.
 SSE/D
 DY.CEE/D



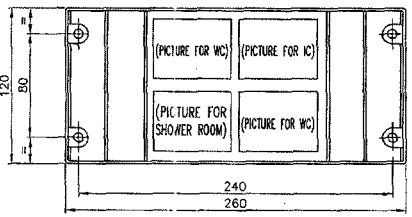
COL-I



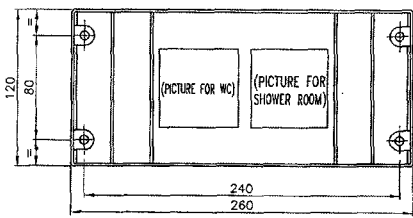
COL-II



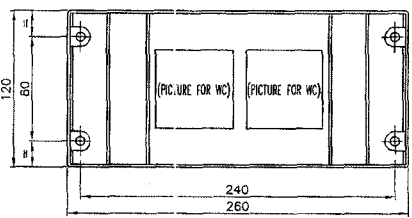
COL-III



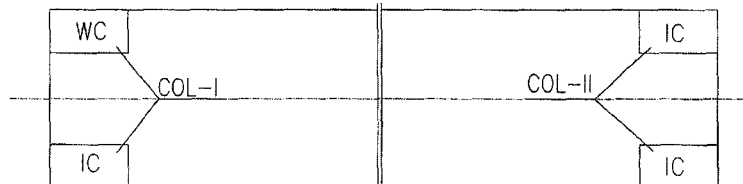
COL-IV



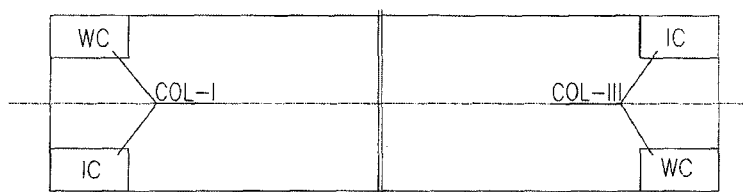
COL-V



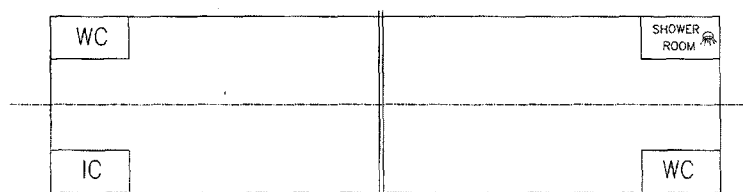
COL-VI



REF. DIAGRAM FOR WGACCN, WGSCWAC, & WGSZAC



REF. DIAGRAM FOR WGFSCWAC



REF. DIAGRAM FOR WGFAC

COL-IV

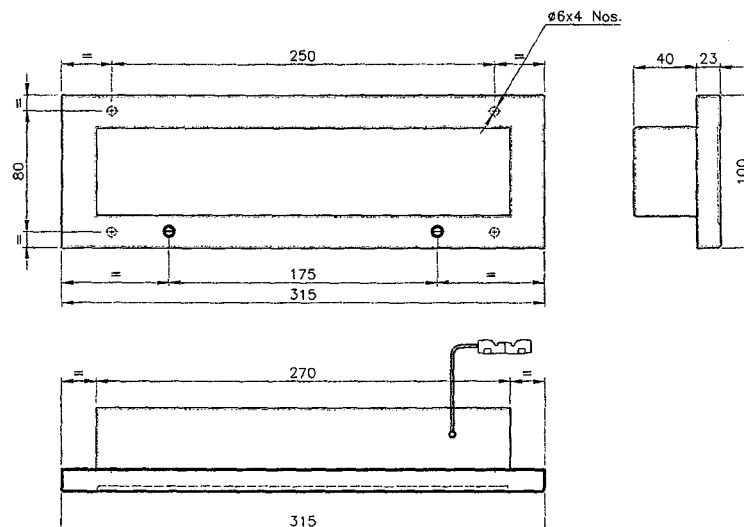
ALT.	DATE OF LATEST ALT.	DATE OF FIRST ISSUE	DY.CEE/D
-07-2016	20-05-2016		

GROUP: 7-6	SUPERSEDED BY:
LED LIGHT FITTING, TYPE - H2 (1W)	SUPERSEDES: ICF/STD-7-6-052/ALT-1
FOR TOILET INDICATION IN CONV. AC COACHES	SCALE: 1:2.5
(AS PER SPEC. NO. RDSO/PE/SPEC/TL/0091-2016, REV.1)	SSE/D: N.SASIKUMAR
CAD FILE: ED-CAD\140 7-6 052-SA00.DWG	CHD: RATHARAJA
DATA CODE NO. 140	ALT: 0
INDIAN RAILWAY STANDARDS	INTEGRAL COACH FACTORY CHENNAI - 38
SHEET 1 OF 1	ICF/STD-7-6-052

FORM SIZE A2 (600x420)

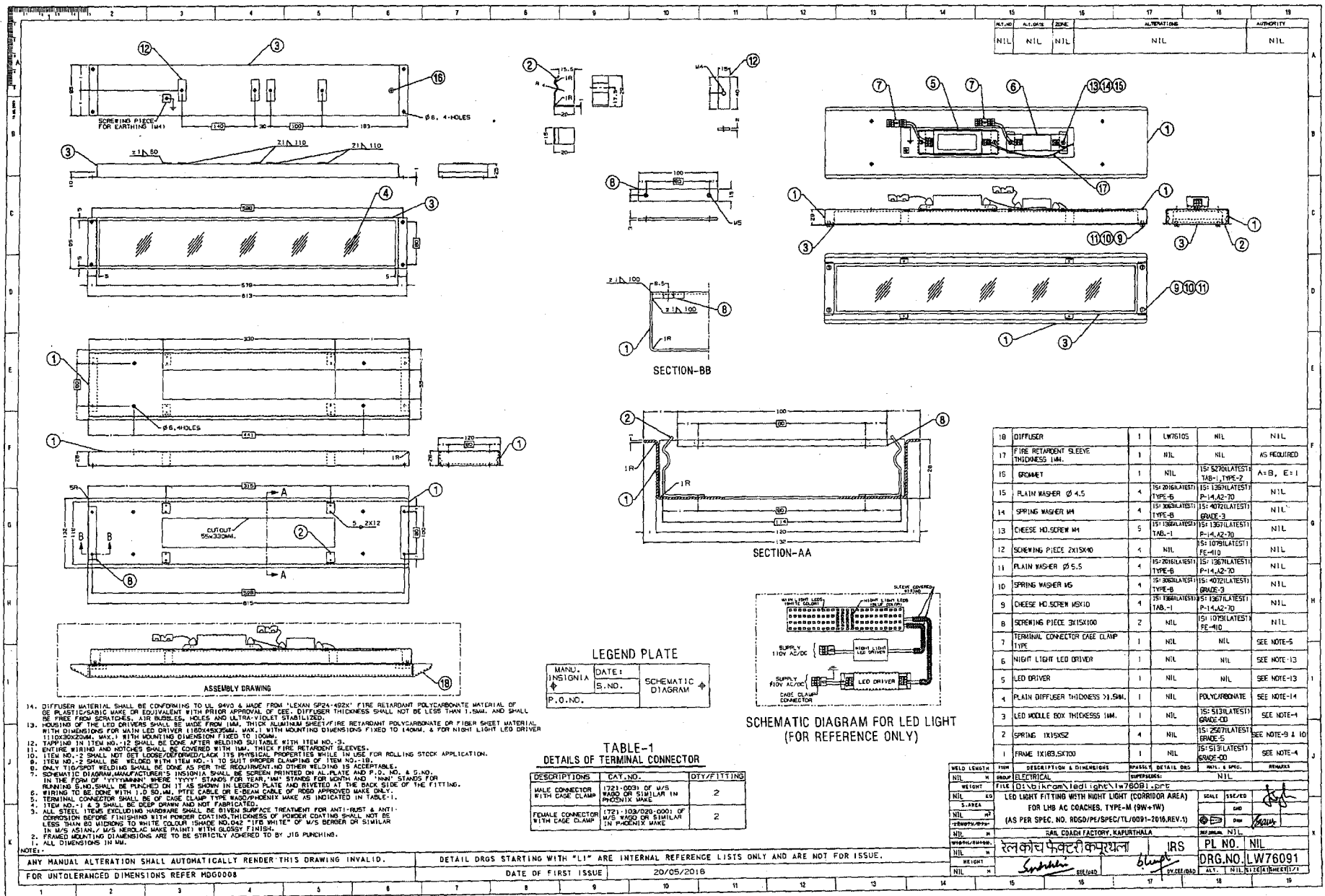
ICF/STD-7-6-048

ALTERATIONS

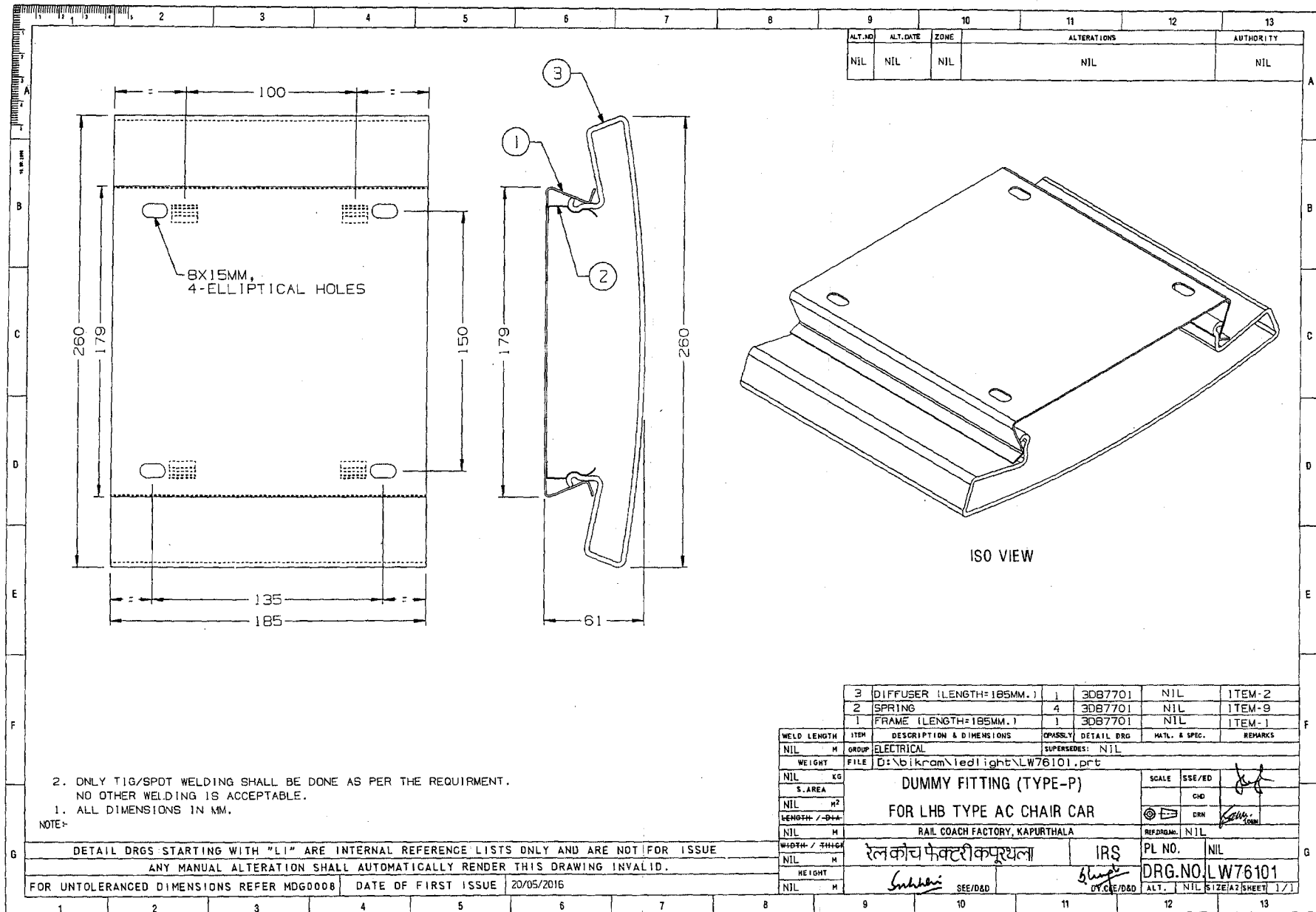


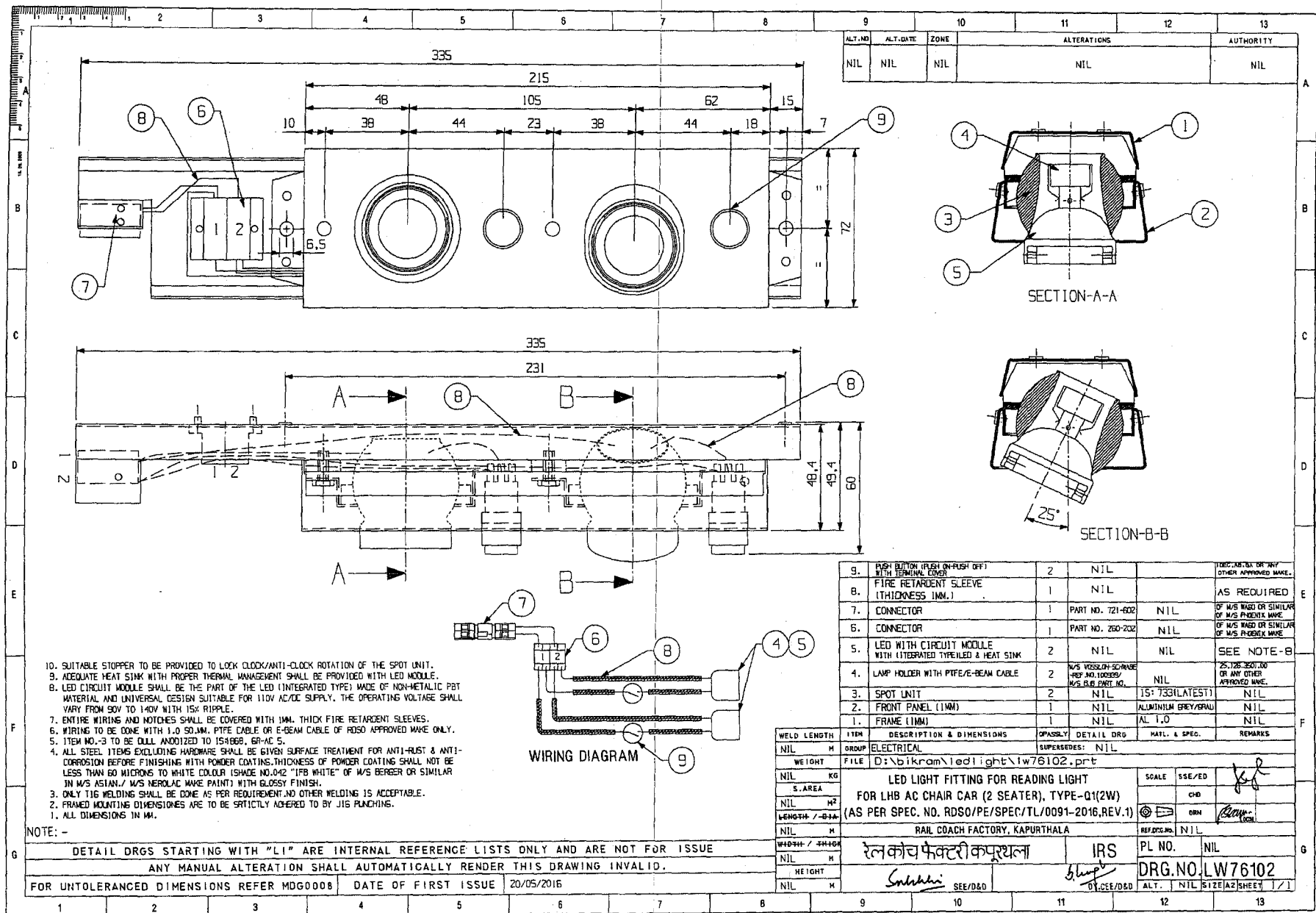
IV	III	II	I	GROUP: 7-6	SUPERSEDED BY:		
				LED LIGHT FITTING, TYPE-K (9W) FOR ENTRANCE DOORWAY AREA (AS PER SPEC. NO. RDSO/PE/SPEC/TL/0091-2016, REV.1)	SUPERSEDES:		
ASSEMBLY DRAWINGS 20-05-2016 <i>[Signature]</i>					SCALE	SSE/D	<i>[Signature]</i>
					1:2.5	CHD.	
					ALT.	DRN	RATHARAJA
CAD FILE: ED-CAD\140 7-6 048---00.DWG DATA CODE NO. 140				INTEGRAL COACH FACTORY CHENNAI - 38			
SHEET 1 OF 1				ICF/STD-7-6-048			

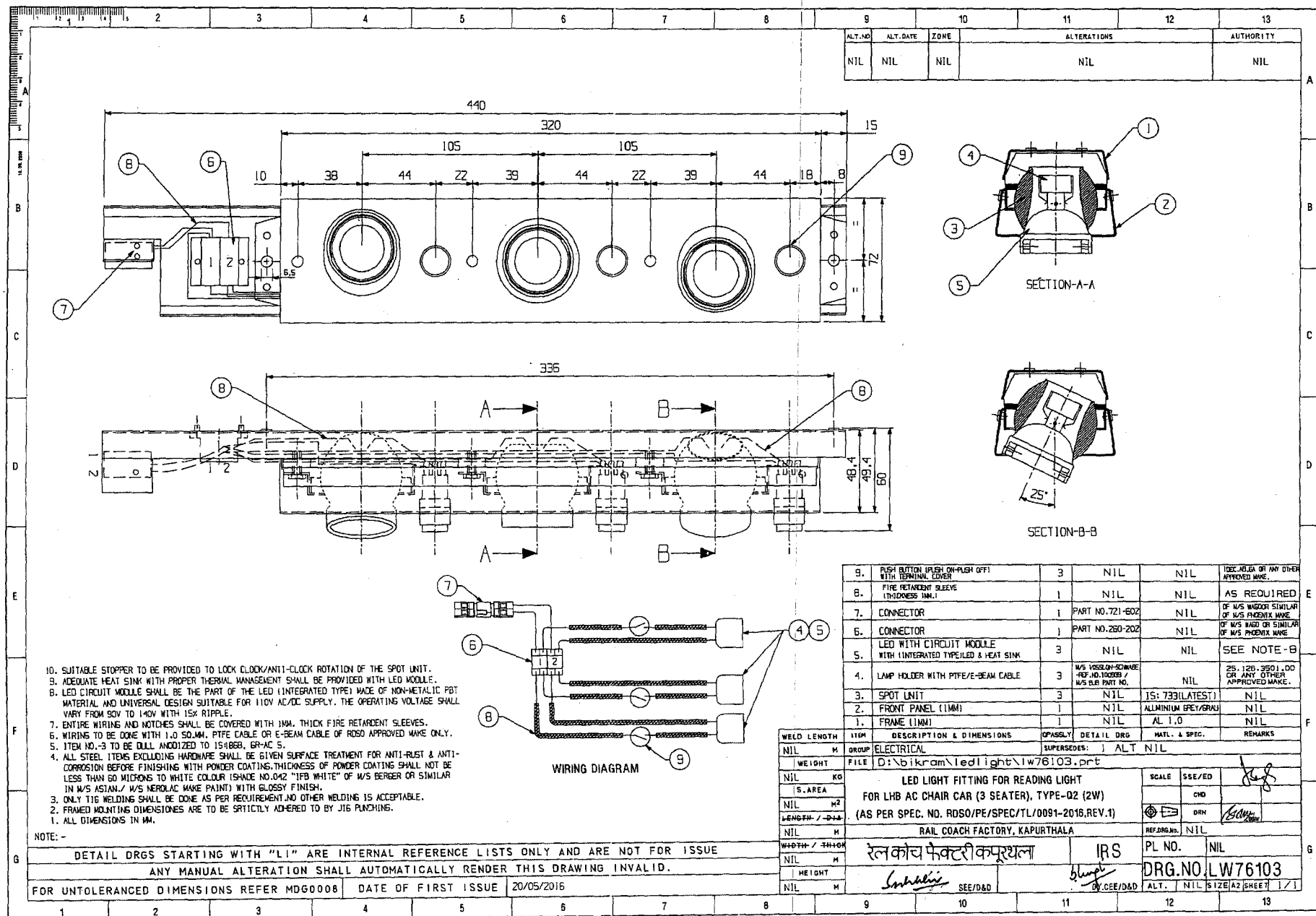
FORM IR A3 420x300

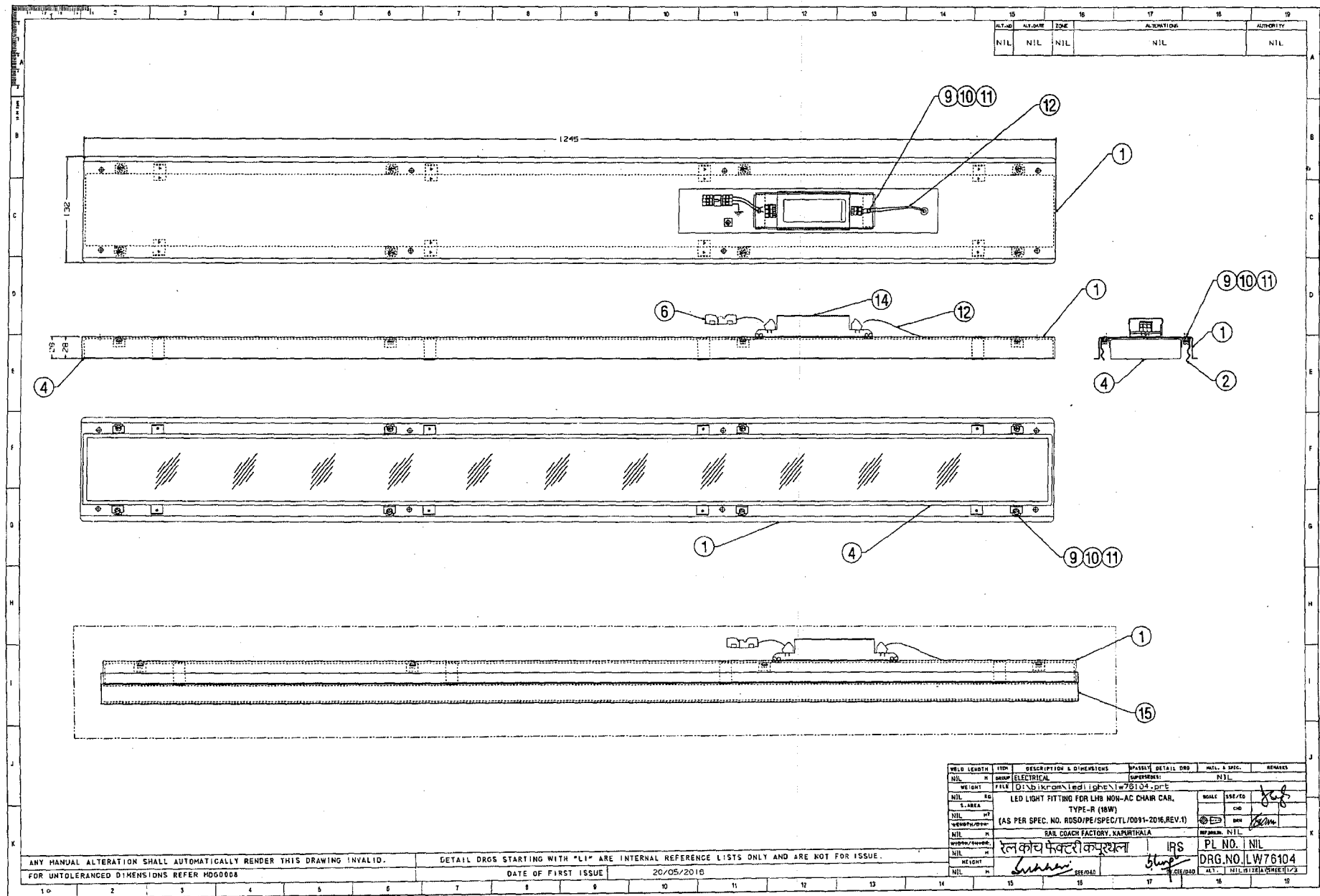


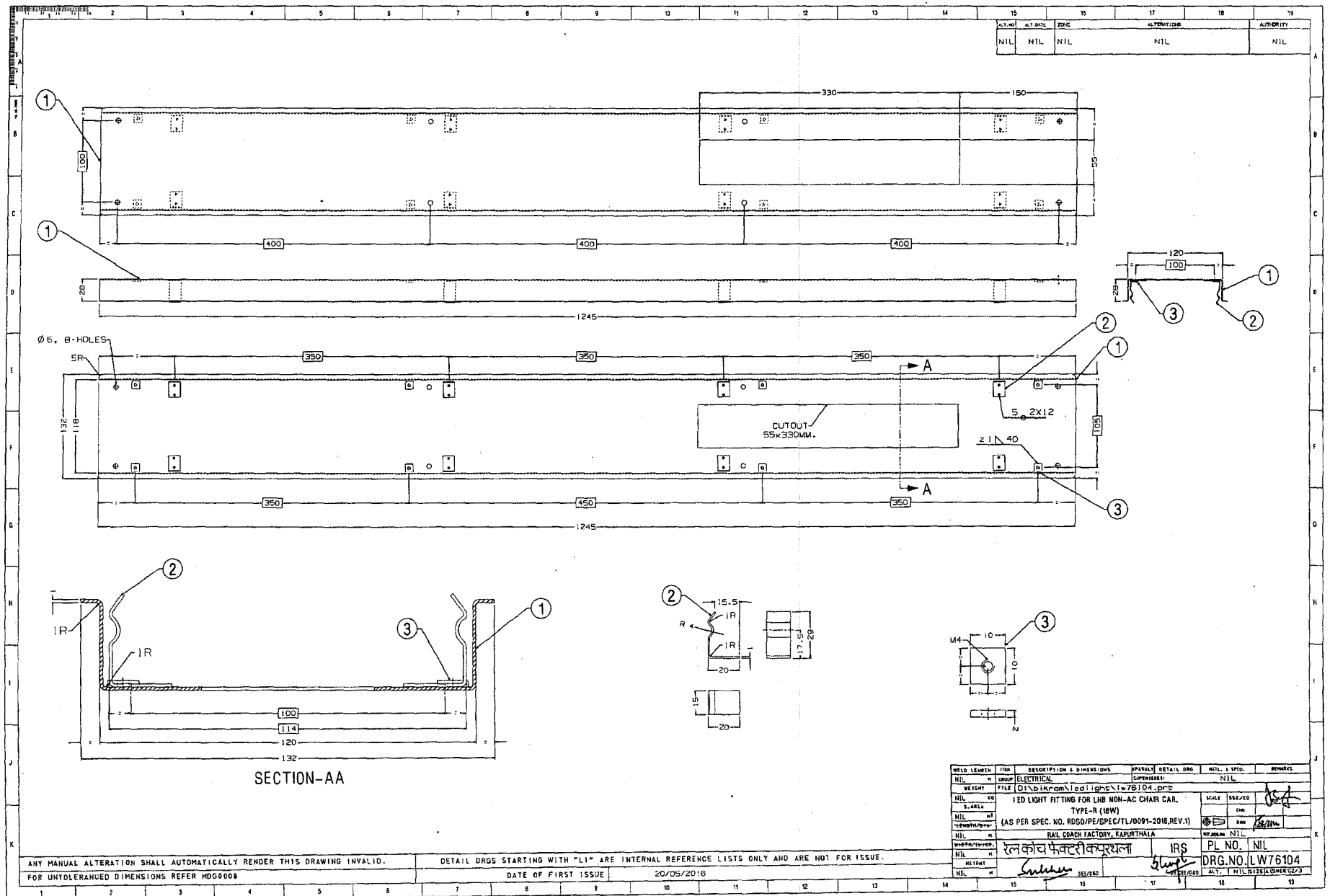
ANNEXURE-20

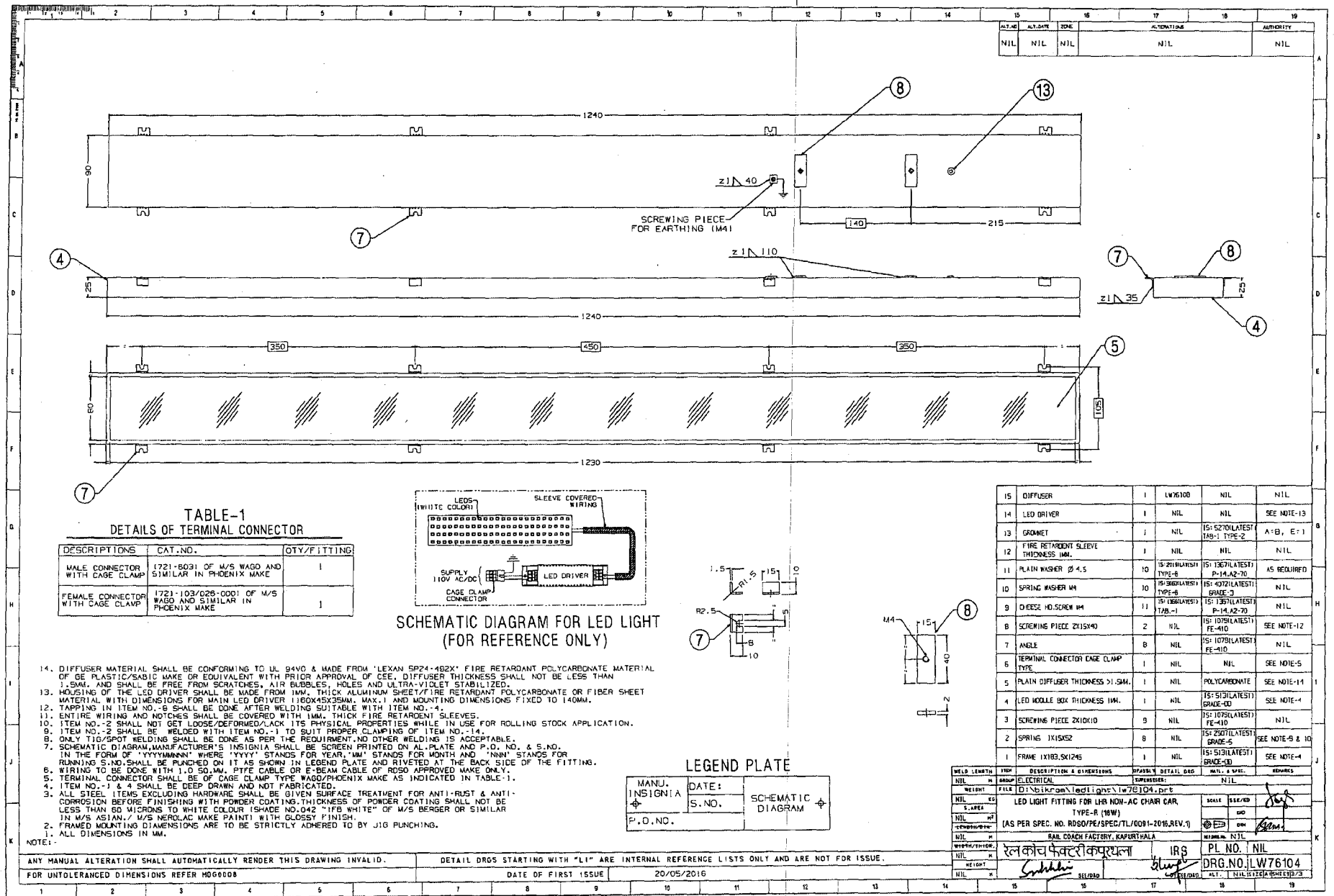




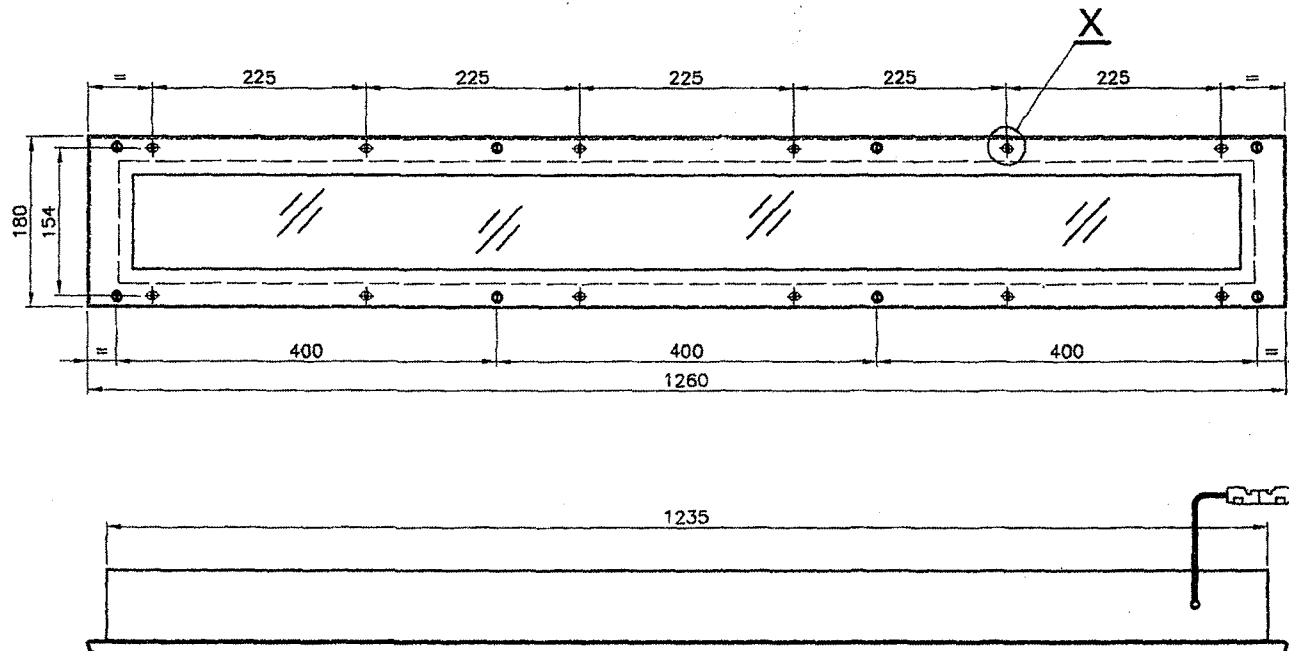






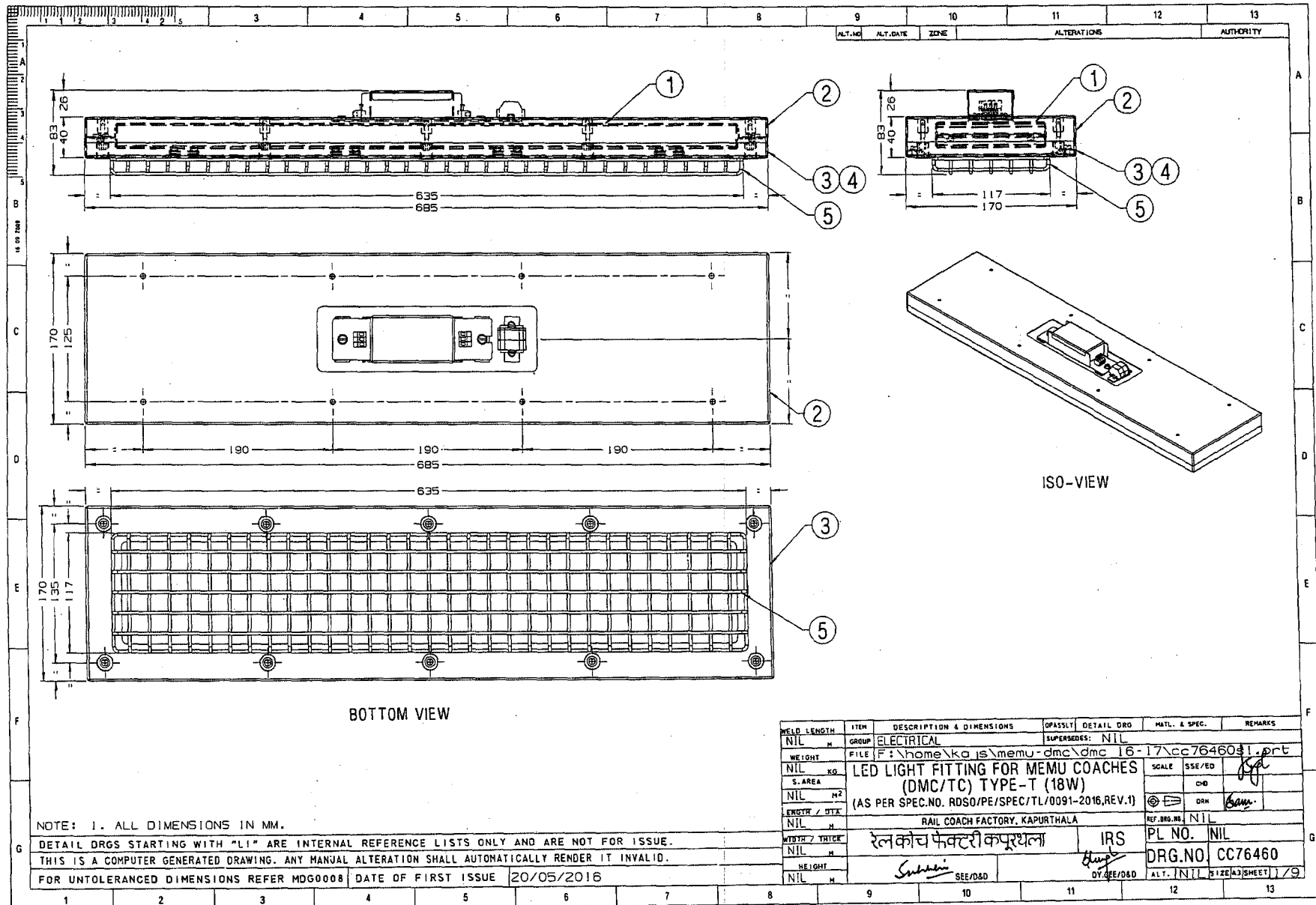


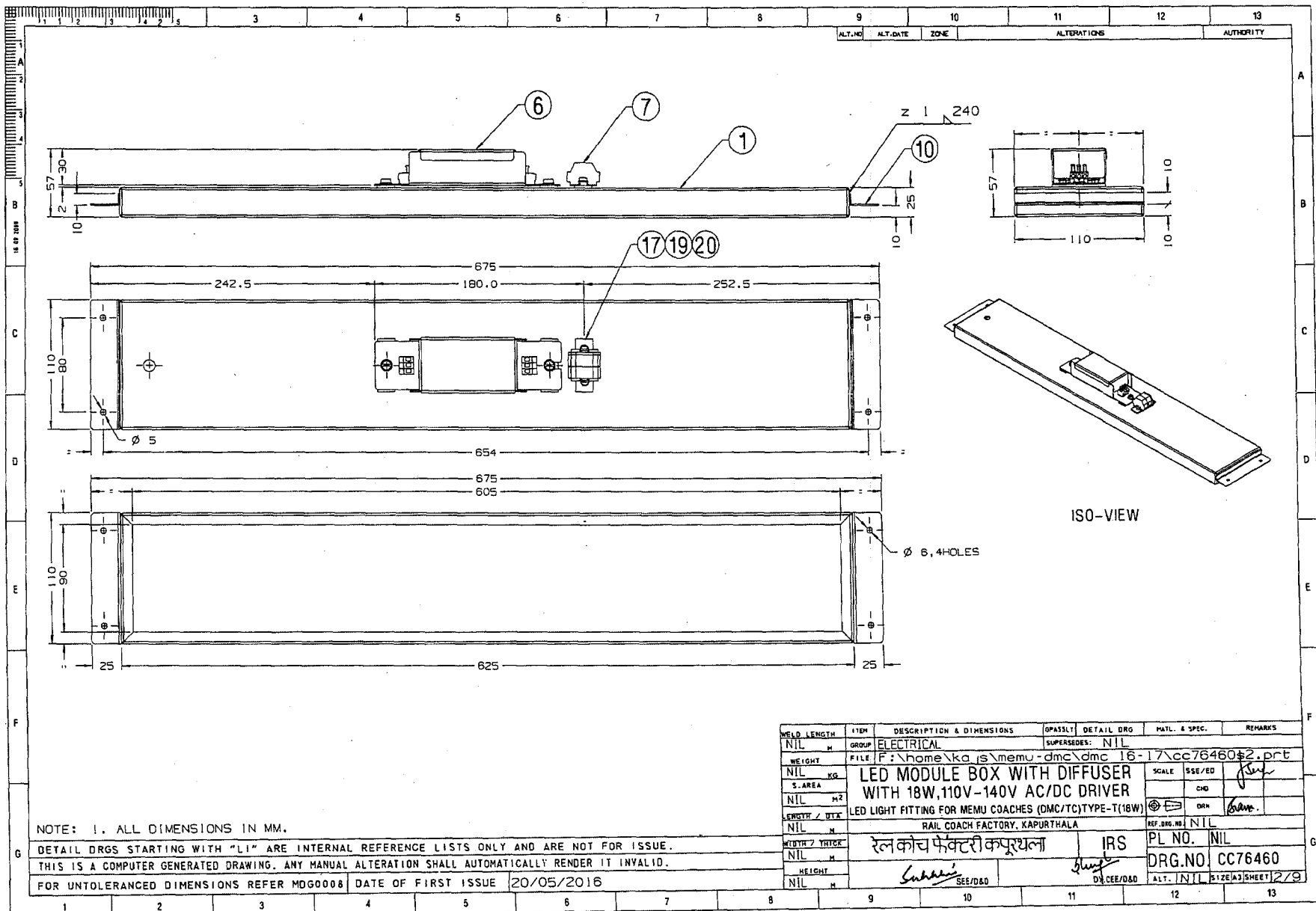
ICF/STD-7-6-047

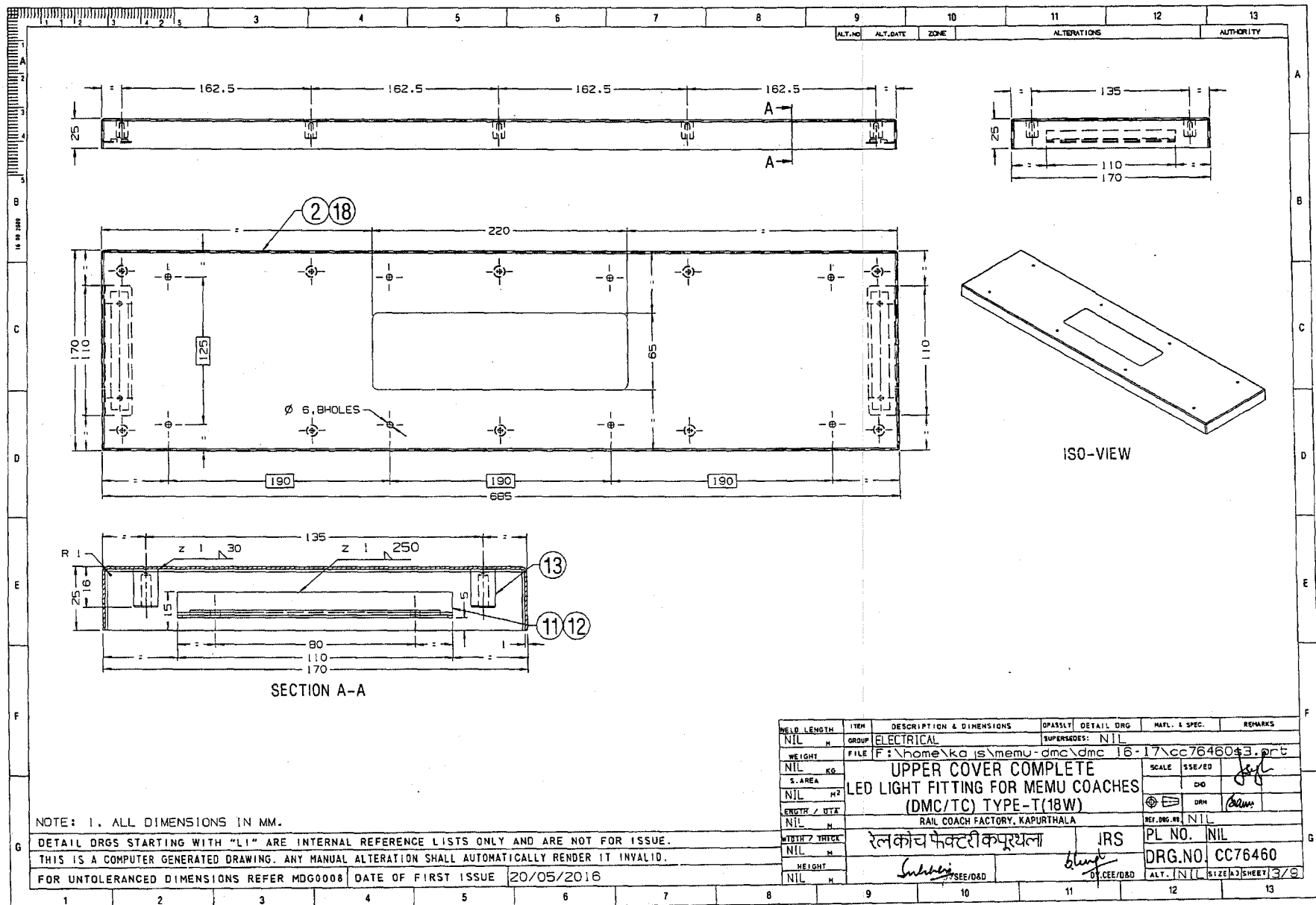


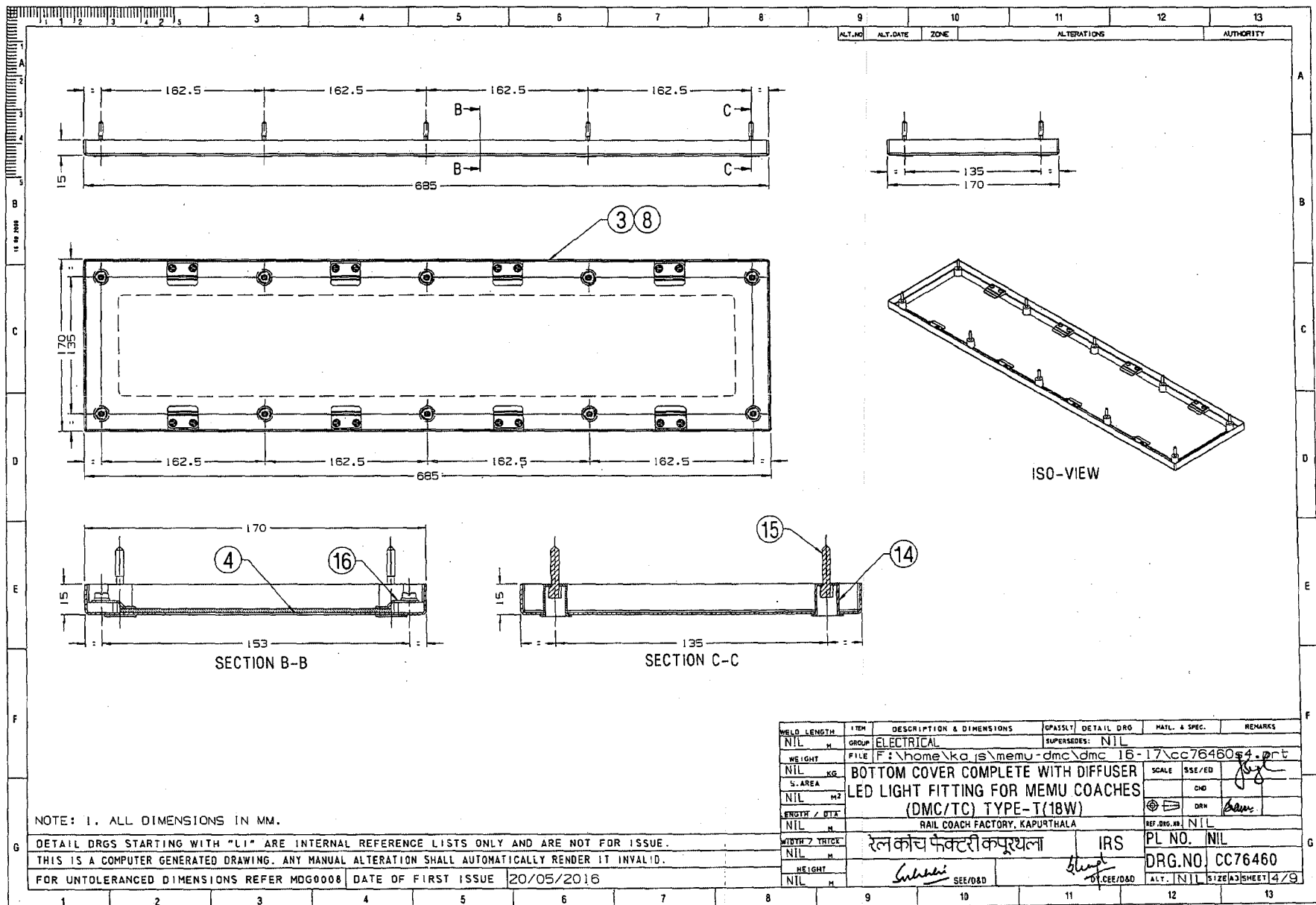
DETAIL AT X

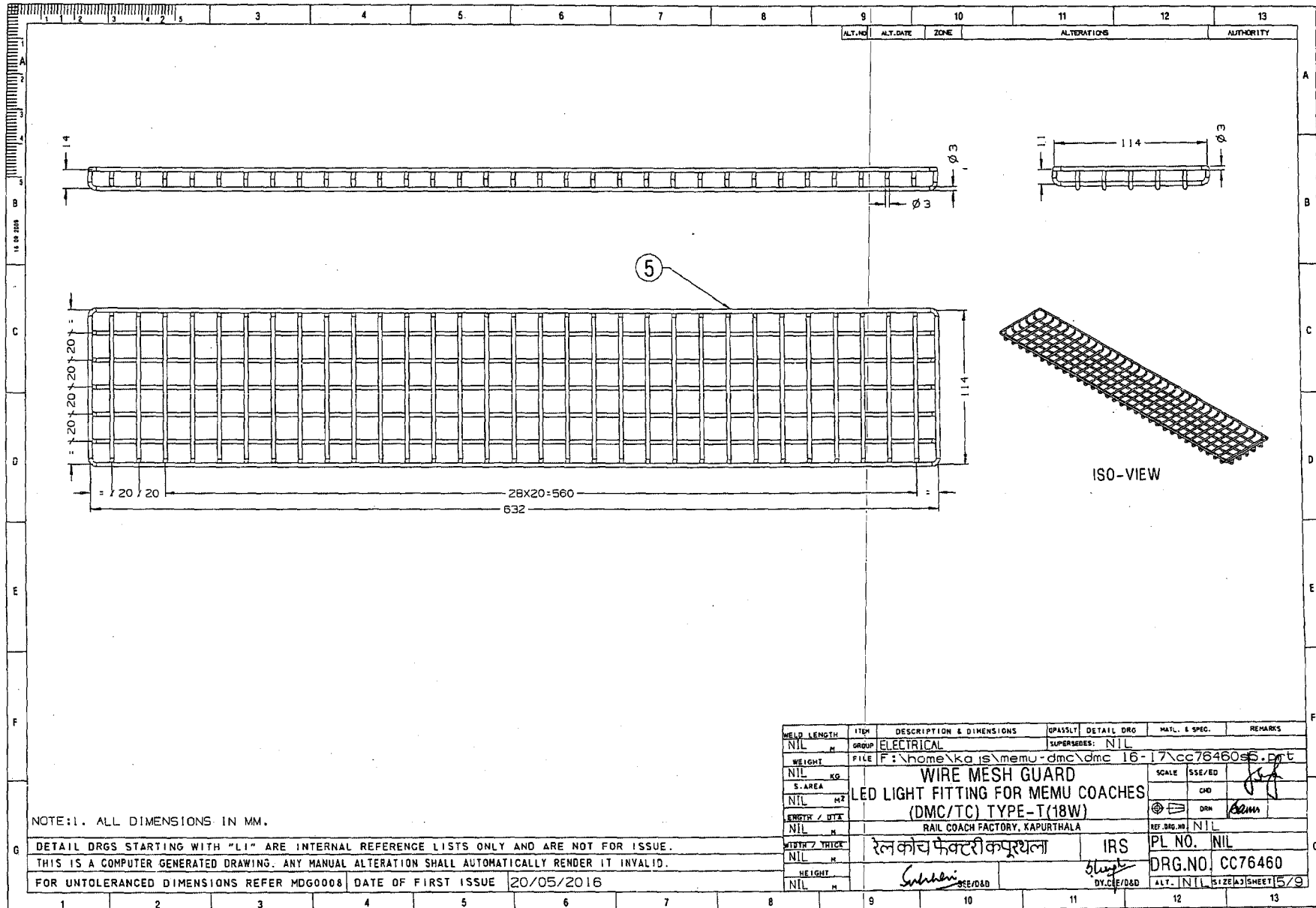
				GROUP: 7-6		SUPERSEDED BY:	
				LED LIGHT FITTING, TYPE-S (18W) FOR CONV. AC CHAIR CAR, EMU & DEMU COACHES (AS PER SPEC. NO. RDSO/PE/SPEC/TL/0091-2016, REV.1)		SUPERSEDES:	
						SCALE	SSE/D
						1:5	CHD.
						ALT.	RATHARAJA
				CAD FILE: ED-CAD\140 7-6 047---00.DWG		AL	
ASSEMBLY DRAWINGS				DATA CODE NO.		SHEET	
05-07-2016				140		1 OF 1	
DATE OF LATEST ALT.				INDIAN RAILWAY STANDARDS		ICF/STD-7-6-047	
DATE OF FIRST ISSUE						INTEGRAL COACH FACTORY CHENNAI - 38	
DY.CEE/D							

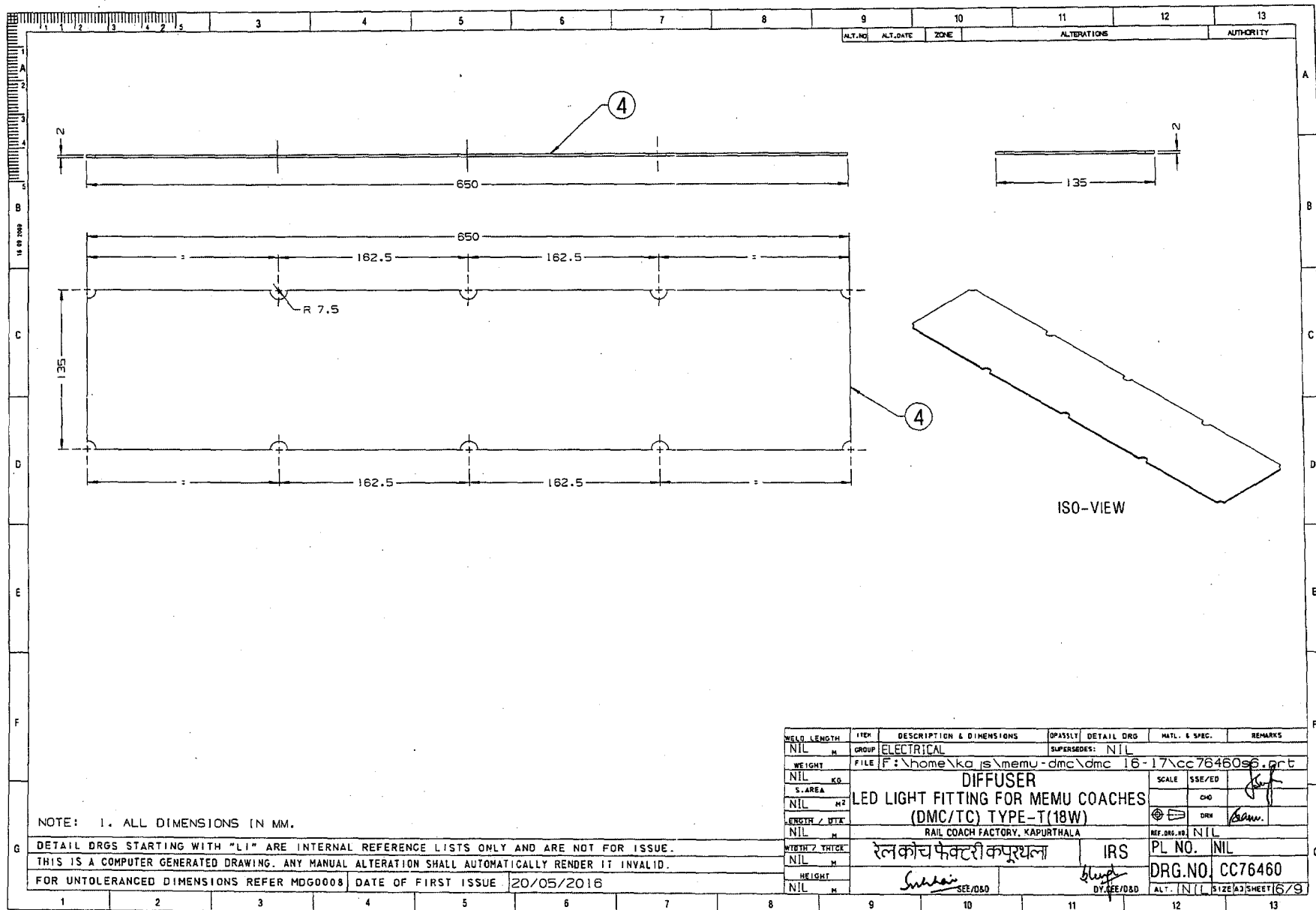


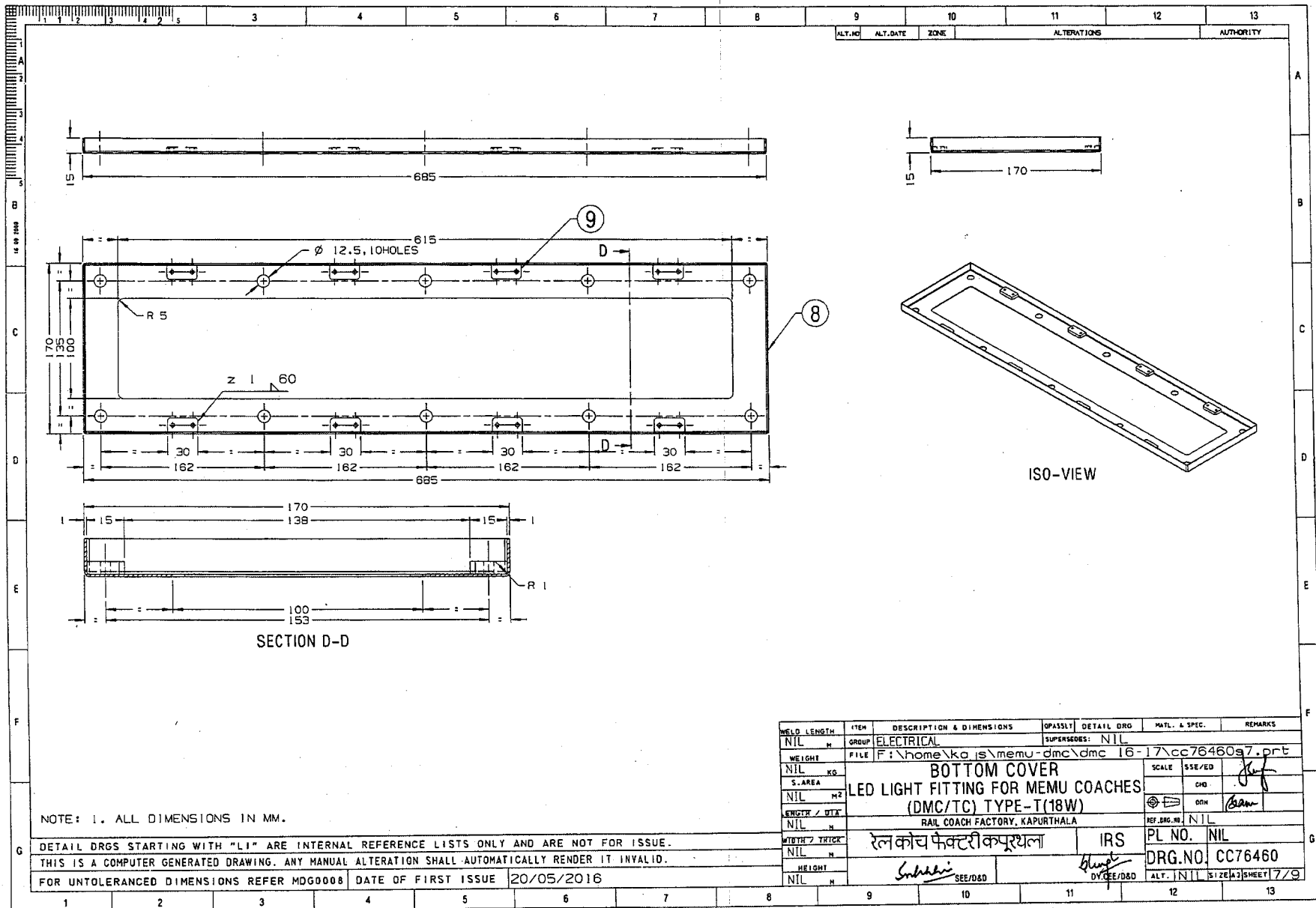


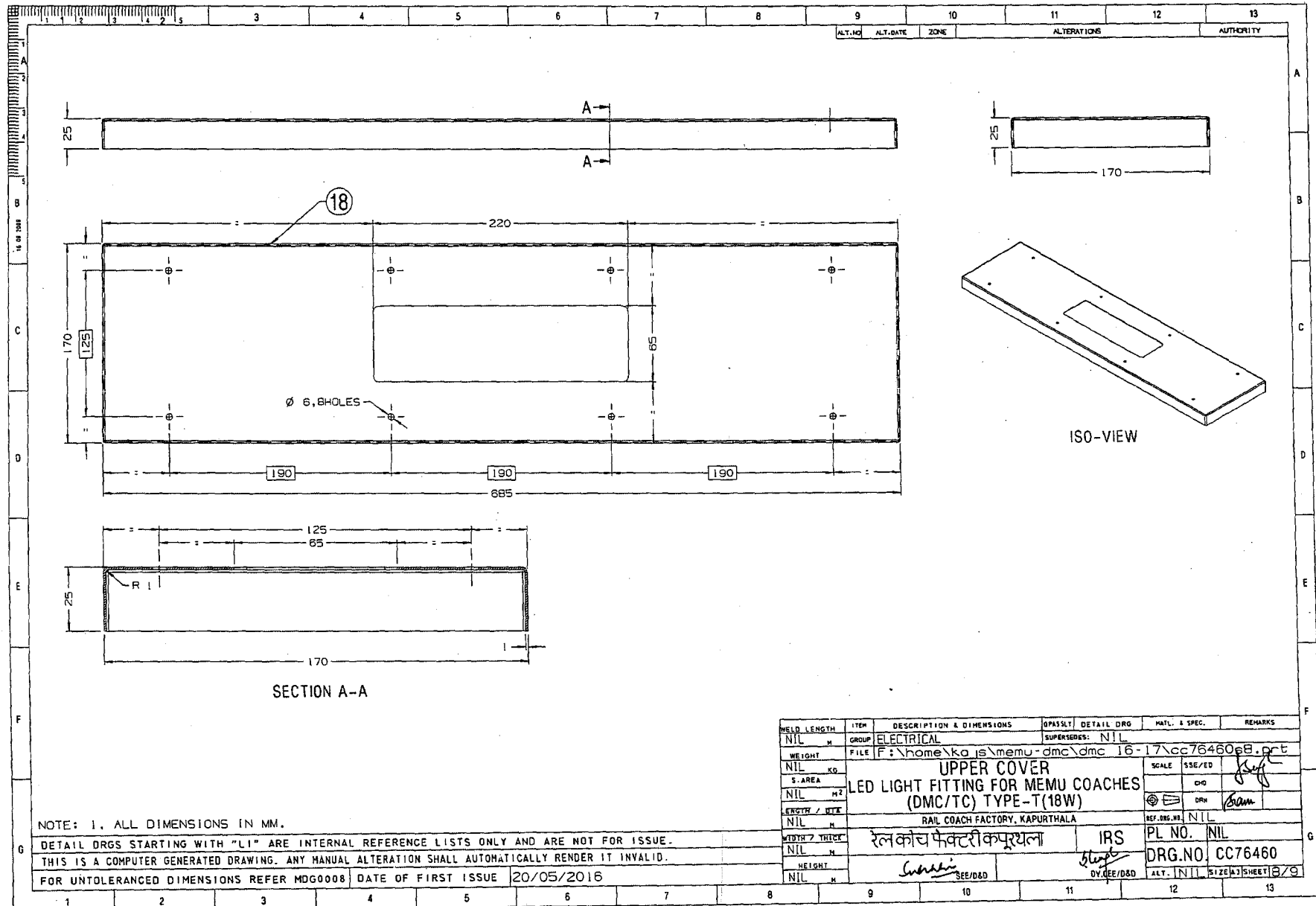


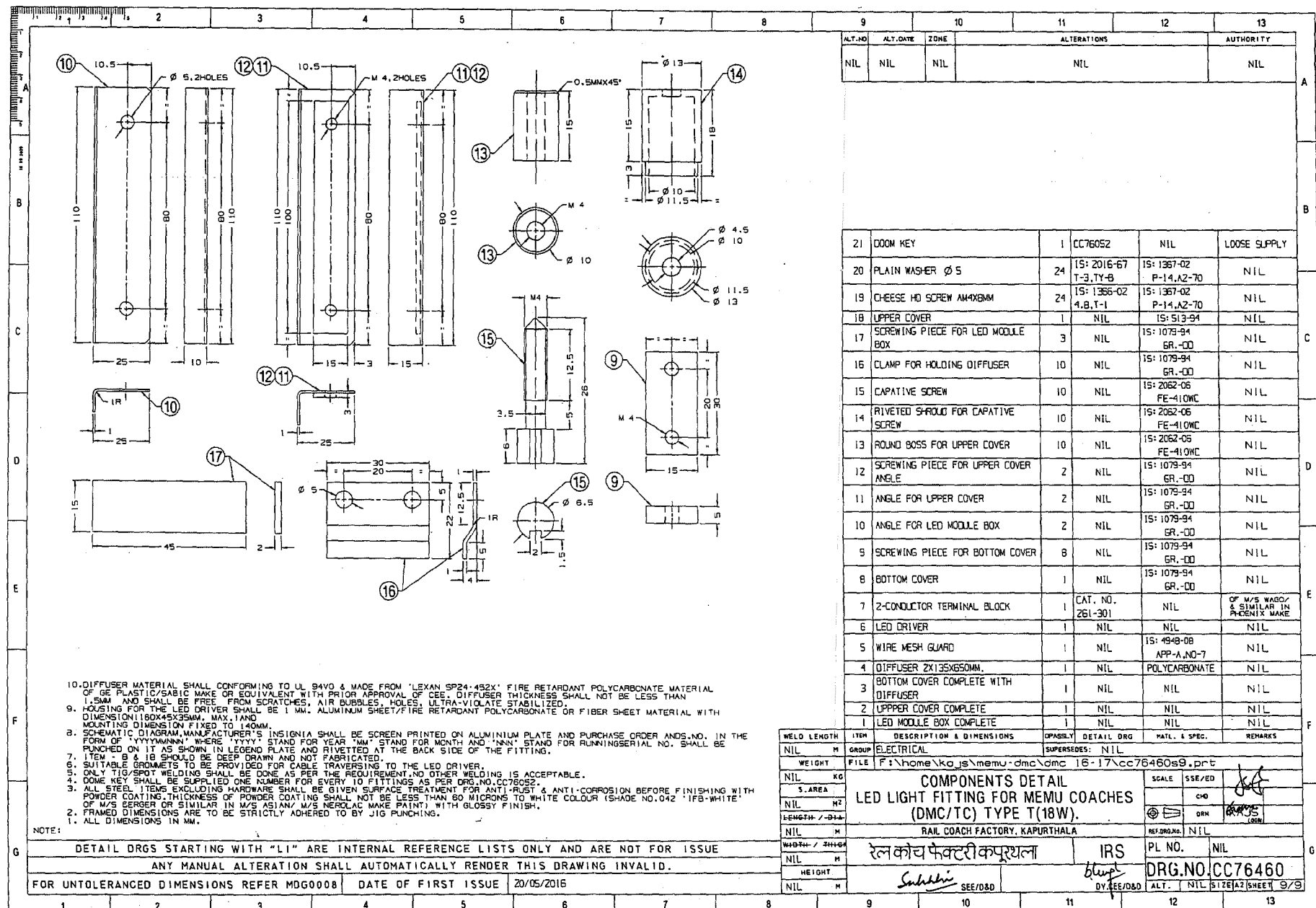












ALT. NO	ALT. DATE	ZONE	ALTERATIONS	AUTHORITY
NIL	NIL	NIL	NIL	NIL

21	DOOR KEY	1	CC76052	NIL	LOOSE SUPPLY
20	PLAIN WASHER Ø 5	24	IS: 2016-67 T-3, TY-6	IS: 1367-02 P-14, A2-70	NIL
19	CHEESE HD SCREW 4MMX8MM	24	IS: 1366-02 4.8, T-1	IS: 1367-02 P-14, A2-70	NIL
18	UPPER COVER	1	NIL	IS: 513-94	NIL
17	SCREWING PIECE FOR LED MODULE BOX	3	NIL	IS: 1079-94 GR.-00	NIL
16	CLAMP FOR HOLDING DIFFUSER	10	NIL	IS: 1079-94 GR.-00	NIL
15	CAPATIVE SCREW	10	NIL	IS: 2062-06 FE-410WC	NIL
14	RIVETED S-RING FOR CAPATIVE SCREW	10	NIL	IS: 2062-06 FE-410WC	NIL
13	ROUND BOSS FOR UPPER COVER	10	NIL	IS: 2062-05 FE-410WC	NIL
12	SCREWING PIECE FOR UPPER COVER ANGLE	2	NIL	IS: 1079-94 GR.-00	NIL
11	ANGLE FOR UPPER COVER	2	NIL	IS: 1079-94 GR.-00	NIL
10	ANGLE FOR LED MODULE BOX	2	NIL	IS: 1079-94 GR.-00	NIL
9	SCREWING PIECE FOR BOTTOM COVER	8	NIL	IS: 1079-94 GR.-00	NIL
8	BOTTOM COVER	1	NIL	IS: 1079-94 GR.-00	NIL
7	2-CONDUCTOR TERMINAL BLOCK	1	CAT. NO. 261-301	NIL	OF M/S WAGO/ & SIMILAR IN PHENIX MAKE
6	LED DRIVER	1	NIL	NIL	NIL
5	WIRE MESH GUARD	1	NIL	IS: 4949-08 APP-A, NO-7	NIL
4	DIFFUSER 2X135X650MM.	1	NIL	POLYCARBONATE	NIL
3	BOTTOM COVER COMPLETE WITH DIFFUSER	1	NIL	NIL	NIL
2	UPPPER COVER COMPLETE	1	NIL	NIL	NIL
1	LED MODULE BOX COMPLETE	1	NIL	NIL	NIL

WELD LENGTH	ITEM	DESCRIPTION & DIMENSIONS	OPASSLY	DETAIL DRG	MATL. & SPEC.	REMARKS		
NIL	M	GROUP ELECTRICAL	SUPERSEDES: NIL					
WEIGHT	FILE	F:\home\kojs\memu-dmc\omc 16-17\cc76460s9.prt						
NIL	KG	COMPONENTS DETAIL LED LIGHT FITTING FOR MEMU COACHES (DMC/TC) TYPE T(18W). RAIL COACH FACTORY, KAPURTHALA			SCALE	SSE/ED	8/8	
NIL	S.AREA				CHG			
NIL	M2				DRN			KJS (GDN)
LENGTH	DSD				REF.DWG.NO.			
NIL	M				NIL			
WEIGHT	244KG	रेल कोच फैक्टरी कपूरथला	IRS	PL NO.	NIL			
NIL	M	SEE/DSD	DRG.NO.	CC76460				
NIL	M	SEE/DSD	ALT.	NIL	SIZE A2	SHEET 9/9		

