

| ALT.NO | ALT. DATE | ZONE | ALTERATIONS | AUTHORITY |
|--------|------------|------|---|------------------------------------|
| b | 21/07/2020 | 6-12 | 1. DIMENSION OF 132MM CHANGED TO 142MM. | CHANGE REQUEST NO. ED/CR/2020-0009 |

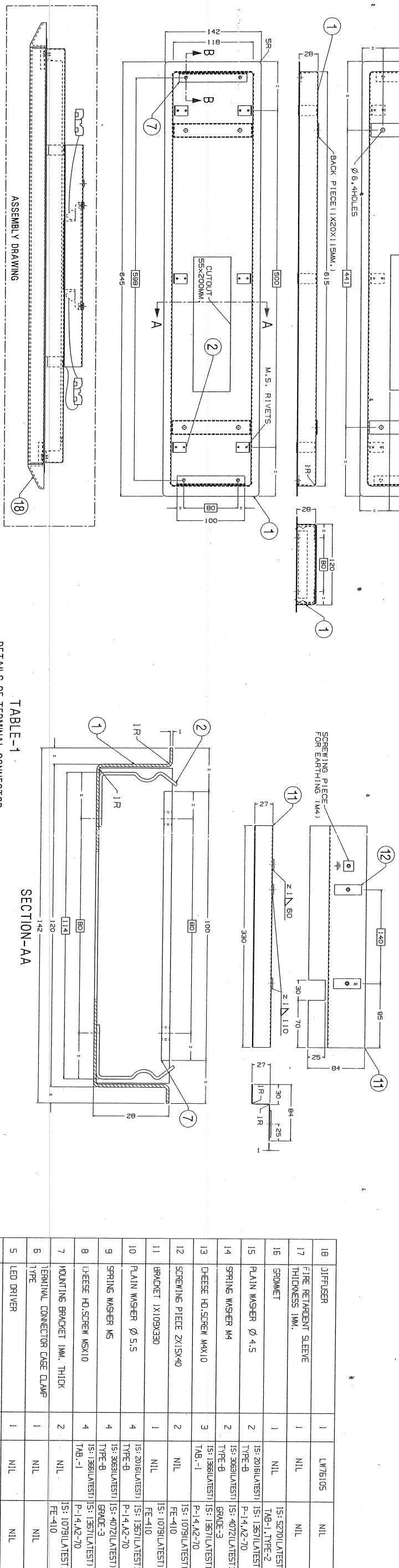
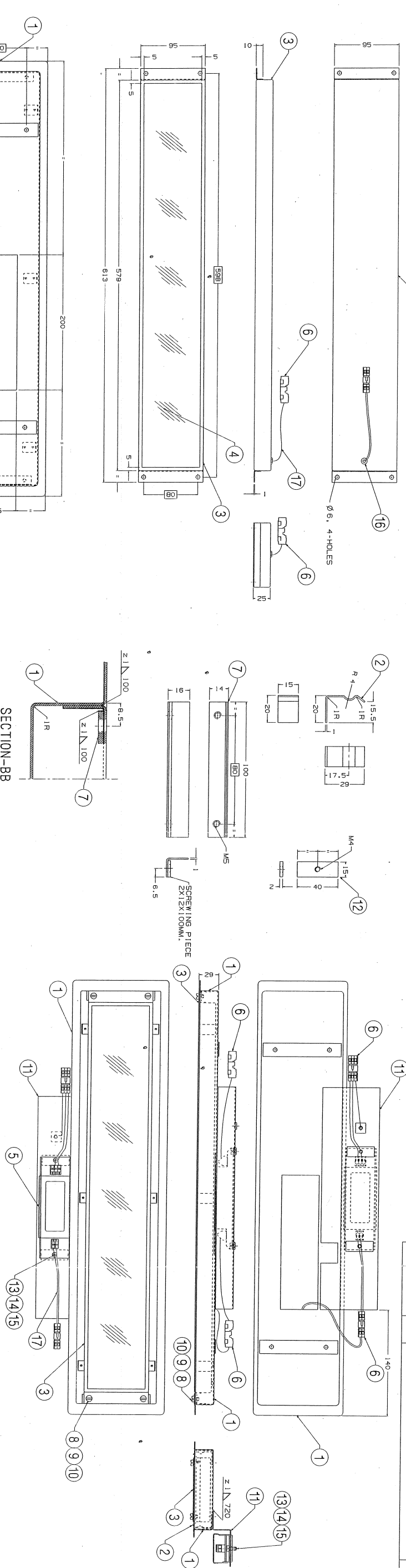
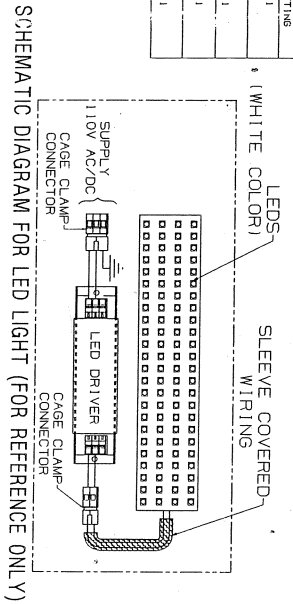


TABLE-1
DETAILS OF TERMINAL CONNECTOR

| DESCRIPTIONS | QTY/NO. | QTY/FITTING |
|--|---------|-------------|
| MALE CONNECTOR WITH CAGE CLAMP (1721-02/028-000) OF M/S WAGO AND SIMILAR IN PHOENIX MAKE | 1 | 1 |
| FEMALE CONNECTOR WITH CAGE CLAMP (1721-02/028-000) OF M/S WAGO AND SIMILAR IN PHOENIX MAKE | 1 | 1 |
| MALE CONNECTOR WITH CAGE CLAMP (1721-02/028-000) OF M/S WAGO AND SIMILAR IN PHOENIX MAKE | 1 | 1 |
| FEMALE CONNECTOR WITH CAGE CLAMP (1721-02/028-000) OF M/S WAGO AND SIMILAR IN PHOENIX MAKE | 1 | 1 |

LEGEND PLATE

| MANU. INSTIGIA | DATE: | SCHEMATIC |
|----------------|-------|-----------|
| Φ | S.NO. | DIAGRAM |



| | | | | | | |
|--|--------------------------------------|---|------------------|------------------|------------------|-----------------|
| 18 | DIFFUSER | 1 | LW76105 | NIL | NIL | NIL |
| 17 | FIRE RETARDANT SLEEVE THICKNESS 1MM. | 1 | NIL | NIL | NIL | AS REQUIRED |
| 16 | GROMMET | 1 | NIL | IS: 5270(LATEST) | IS: 1367(LATEST) | A=B, E=1 |
| 15 | PLAIN WASHER Ø 4.5 | 2 | IS: 2016(LATEST) | TYPE-B | IS: 1367(LATEST) | NIL |
| 14 | SPRING WASHER M4 | 2 | IS: 3063(LATEST) | TYPE-B | IS: 4072(LATEST) | NIL |
| 13 | CHEESE HD.SCREEN M4X10 | 3 | IS: 1366(LATEST) | TAB-1 | IS: 1367(LATEST) | NIL |
| 12 | SCREWING PIECE ZN15X40 | 2 | NIL | FE-410 | IS: 1079(LATEST) | SEE NOTE-12 |
| 11 | BRACKET 1X109X30 | 1 | NIL | FE-410 | IS: 1079(LATEST) | NIL |
| 10 | PLAIN WASHER Ø 5.5 | 4 | IS: 2016(LATEST) | TYPE-B | IS: 1367(LATEST) | NIL |
| 9 | SPRING WASHER M5 | 4 | IS: 3063(LATEST) | TYPE-B | IS: 4072(LATEST) | NIL |
| 8 | CHEESE HD.SCREEN M5X10 | 4 | IS: 1366(LATEST) | TAB-1 | IS: 1367(LATEST) | NIL |
| 7 | MOUNTING BRACKET 1MM. THICK | 2 | NIL | FE-410 | IS: 1079(LATEST) | NIL |
| 6 | TERMINAL CONNECTOR CAGE CLAMP TYPE | 1 | NIL | NIL | FE-410 | SEE NOTE-5 |
| 5 | LED DRIVER | 1 | NIL | NIL | NIL | SEE NOTE-13 |
| 4 | PLAIN DIFFUSER THICKNESS 21.5MM. | 1 | NIL | POLYCARBONATE | IS: 5131(LATEST) | SEE NOTE-14 |
| 3 | LED MODULE BOX THICKNESS 1MM. | 1 | NIL | GRADE-0D | IS: 5131(LATEST) | SEE NOTE-4 |
| 2 | SPRING 1X15X52 | 5 | NIL | GRADE-5 | IS: 2507(LATEST) | SEE NOTE-9 & 10 |
| 1 | FRAME 1MM. THICK | 1 | NIL | GRADE-0D | IS: 5131(LATEST) | SEE NOTE-4 |
| REMARKS | | | | | | |
| WELD LENGTH | | | | | | |
| M GROUP ELECTRICAL | | | | | | |
| FILE D:\B\K\Com\1\w\1w760909.DJT | | | | | | |
| NLT | | | | | | |
| WEIGHT | | | | | | |
| S. AREA | | | | | | |
| M2 | | | | | | |
| LENGTH/57+ | | | | | | |
| LED FITTING FOR DOORWAY/GANGWAY AREA | | | | | | |
| FOR LHB AC COACHES. TYPE-N (9W) | | | | | | |
| (AS PER SPEC. NO. RDSO/PE/SPEC/TL/0094-2016.REV.1) | | | | | | |
| SCALE | | | | | | |
| SSE/ED | | | | | | |
| CHD | | | | | | |
| DMM | | | | | | |

| WELD LENGTH | WELD TYPE | WELD QTY |
|-------------|-----------|----------|
| 1 | WELD | 1 |
| 2 | WELD | 1 |
| 3 | WELD | 1 |
| 4 | WELD | 1 |
| 5 | WELD | 1 |
| 6 | WELD | 1 |
| 7 | WELD | 1 |
| 8 | WELD | 1 |
| 9 | WELD | 1 |
| 10 | WELD | 1 |
| 11 | WELD | 1 |
| 12 | WELD | 1 |
| 13 | WELD | 1 |
| 14 | WELD | 1 |
| 15 | WELD | 1 |
| 16 | WELD | 1 |
| 17 | WELD | 1 |
| 18 | WELD | 1 |

| WELD LENGTH | WELD TYPE | WELD QTY |
|-------------|-----------|----------|
| 1 | WELD | 1 |
| 2 | WELD | 1 |
| 3 | WELD | 1 |
| 4 | WELD | 1 |
| 5 | WELD | 1 |
| 6 | WELD | 1 |
| 7 | WELD | 1 |
| 8 | WELD | 1 |
| 9 | WELD | 1 |
| 10 | WELD | 1 |
| 11 | WELD | 1 |
| 12 | WELD | 1 |
| 13 | WELD | 1 |
| 14 | WELD | 1 |
| 15 | WELD | 1 |
| 16 | WELD | 1 |
| 17 | WELD | 1 |
| 18 | WELD | 1 |

| WELD LENGTH | WELD TYPE | WELD QTY |
|-------------|-----------|----------|
| 1 | WELD | 1 |
| 2 | WELD | 1 |
| 3 | WELD | 1 |
| 4 | WELD | 1 |
| 5 | WELD | 1 |
| 6 | WELD | 1 |
| 7 | WELD | 1 |
| 8 | WELD | 1 |
| 9 | WELD | 1 |
| 10 | WELD | 1 |
| 11 | WELD | 1 |
| 12 | WELD | 1 |
| 13 | WELD | 1 |
| 14 | WELD | 1 |
| 15 | WELD | 1 |
| 16 | WELD | 1 |
| 17 | WELD | 1 |
| 18 | WELD | 1 |

| WELD LENGTH | WELD TYPE | WELD QTY |
|-------------|-----------|----------|
| 1 | WELD | 1 |
| 2 | WELD | 1 |
| 3 | WELD | 1 |
| 4 | WELD | 1 |
| 5 | WELD | 1 |
| 6 | WELD | 1 |
| 7 | WELD | 1 |
| 8 | WELD | 1 |
| 9 | WELD | 1 |
| 10 | WELD | 1 |
| 11 | WELD | 1 |
| 12 | WELD | 1 |
| 13 | WELD | 1 |
| 14 | WELD | 1 |
| 15 | WELD | 1 |
| 16 | WELD | 1 |
| 17 | WELD | 1 |
| 18 | WELD | 1 |

| WELD LENGTH | WELD TYPE | WELD QTY |
|-------------|-----------|----------|
| 1 | WELD | 1 |
| 2 | WELD | 1 |
| 3 | WELD | 1 |
| 4 | WELD | 1 |
| 5 | WELD | 1 |
| 6 | WELD | 1 |
| 7 | WELD | 1 |
| 8 | WELD | 1 |
| 9 | WELD | 1 |
| 10 | WELD | 1 |
| 11 | WELD | 1 |
| 12 | WELD | 1 |
| 13 | WELD | 1 |
| 14 | WELD | 1 |
| 15 | WELD | 1 |
| 16 | WELD | 1 |
| 17 | WELD | 1 |
| 18 | WELD | 1 |

| WELD LENGTH | WELD TYPE | WELD QTY |
|-------------|-----------|----------|
| 1 | WELD | 1 |
| 2 | WELD | 1 |
| 3 | WELD | 1 |
| 4 | WELD | 1 |
| 5 | WELD | 1 |
| 6 | WELD | 1 |
| 7 | WELD | 1 |
| 8 | WELD | 1 |
| 9 | WELD | 1 |
| 10 | WELD | 1 |
| 11 | WELD | 1 |
| 12 | WELD | 1 |
| 13 | WELD | 1 |
| 14 | WELD | 1 |
| 15 | WELD | 1 |
| 16 | WELD | 1 |
| 17 | WELD | 1 |
| 18 | WELD | 1 |

| WELD LENGTH | WELD TYPE | WELD QTY |
|-------------|-----------|----------|
| 1 | WELD | 1 |
| 2 | WELD | 1 |
| 3 | WELD | 1 |
| 4 | WELD | 1 |
| 5 | WELD | 1 |
| 6 | WELD | 1 |
| 7 | WELD | 1 |
| 8 | WELD | 1 |
| 9 | WELD | 1 |
| 10 | WELD | 1 |
| 11 | WELD | 1 |
| 12 | WELD | 1 |
| 13 | WELD | 1 |
| 14 | WELD | 1 |
| 15 | WELD | 1 |
| 16 | WELD | 1 |
| 17 | WELD | 1 |
| 18 | WELD | 1 |

| WELD LENGTH | WELD TYPE | WELD QTY |
|-------------|-----------|----------|
| 1 | WELD | 1 |
| 2 | WELD | 1 |
| 3 | WELD | 1 |
| 4 | WELD | 1 |
| 5 | WELD | 1 |
| 6 | WELD | 1 |
| 7 | WELD | 1 |
| 8 | WELD | 1 |
| 9 | WELD | 1 |
| 10 | WELD | 1 |
| 11 | WELD | 1 |
| 12 | WELD | 1 |
| 13 | WELD | 1 |
| 14 | WELD | 1 |
| 15 | WELD | 1 |
| 16 | WELD | 1 |
| 17 | WELD | 1 |
| 18 | WELD | 1 |

| WELD LENGTH | WELD TYPE | WELD QTY |
|-------------|-----------|----------|
| 1 | WELD | 1 |
| 2 | WELD | 1 |
| 3 | WELD | 1 |
| 4 | WELD | 1 |
| 5 | WELD | 1 |
| 6 | WELD | 1 |
| 7 | WELD | 1 |
| 8 | WELD | 1 |
| 9 | WELD | 1 |
| 10 | WELD | 1 |
| 11 | WELD | 1 |
| 12 | WELD | 1 |
| 13 | WELD | 1 |
| 14 | WELD | 1 |
| 15 | WELD | 1 |
| 16 | WELD | 1 |
| 17 | WELD | 1 |
| 18 | WELD | 1 |

| WELD LENGTH | WELD TYPE | WELD QTY |
|-------------|-----------|----------|
| 1 | WELD | 1 |
| 2 | WELD | 1 |
| 3 | WELD | 1 |
| 4 | WELD | 1 |
| 5 | WELD | 1 |
| 6 | WELD | 1 |
| 7 | WELD | 1 |
| 8 | WELD | 1 |
| 9 | WELD | 1 |
| 10 | WELD | 1 |
| 11 | WELD | 1 |
| 12 | WELD | 1 |
| 13 | WELD | 1 |
| 14 | WELD | 1 |
| 15 | WELD | 1 |
| 16 | WELD | 1 |
| 17 | WELD | 1 |
| 18 | WELD | 1 |

| WELD LENGTH | WELD TYPE | WELD QTY |
|-------------|-----------|----------|
| 1 | WELD | 1 |
| 2 | WELD | 1 |
| 3 | WELD | 1 |
| 4 | WELD | 1 |
| 5 | WELD | 1 |
| 6 | WELD | 1 |
| 7 | WELD | 1 |
| 8 | WELD | 1 |
| 9 | WELD | 1 |
| 10 | WELD | 1 |
| 11 | WELD | 1 |
| 12 | WELD | 1 |
| 13 | WELD | 1 |
| 14 | WELD | 1 |
| 15 | WELD | 1 |
| 16 | WELD | 1 |
| 17 | WELD | 1 |
| 18 | WELD | 1 |

| WELD LENGTH | WELD TYPE | WELD QTY |
|-------------|-----------|----------|
| 1 | WELD | 1 |
| 2 | WELD | 1 |
| 3 | WELD | 1 |
| 4 | WELD | 1 |
| 5 | WELD | 1 |
| 6 | WELD | 1 |
| 7 | WELD | 1 |
| 8 | WELD | 1 |
| 9 | WELD | 1 |
| 10 | WELD | 1 |
| 11 | WELD | 1 |
| 12 | WELD | 1 |
| 13 | WELD | 1 |
| 14 | WELD | 1 |
| 15 | WELD | 1 |
| 16 | WELD | 1 |
| 17 | WELD | 1 |
| 18 | WELD | 1 |

| WELD LENGTH | WELD TYPE | WELD QTY |
|-------------|-----------|----------|
| 1 | WELD | 1 |
| 2 | WELD | 1 |
| 3 | WELD | 1 |
| 4 | WELD | 1 |
| 5 | WELD | 1 |
| 6 | WELD | 1 |
| 7 | WELD | 1 |
| 8 | WELD | 1 |
| 9 | WELD | 1 |
| 10 | WELD | 1 |
| 11 | WELD | 1 |
| 12 | WELD | 1 |
| 13 | WELD | 1 |
| 14 | WELD | 1 |
| 15 | WELD | 1 |
| 16 | WELD | 1 |
| 17 | WELD | 1 |
| 18 | WELD | 1 |

| WELD LENGTH | WELD TYPE | WELD QTY |
|-------------|-----------|----------|
| 1 | WELD | 1 |
| 2 | WELD | 1 |
| 3 | WELD | 1 |
| 4 | WELD | 1 |
| 5 | WELD | 1 |
| 6 | WELD | 1 |
| 7 | WELD | 1 |
| 8 | WELD | 1 |
| 9 | WELD | 1 |
| 10 | WELD | 1 |
| 11 | WELD | 1 |
| 12 | WELD | 1 |
| 13 | WELD | 1 |
| 14 | WELD | 1 |
| 15 | WELD | 1 |
| 16 | WELD | 1 |
| 17 | WELD | 1 |
| 18 | WELD | 1 |

| WELD LENGTH | WELD TYPE | WELD QTY |
|-------------|-----------|----------|
| 1 | WELD | 1 |
| 2 | WELD | 1 |
| 3 | WELD | 1 |
| 4 | WELD | 1 |
| 5 | WELD | 1 |
| 6 | WELD | 1 |
| 7 | WELD | 1 |
| 8 | WELD | 1 |
| 9 | WELD | 1 |
| 10 | WELD | 1 |
| 11 | WELD | 1 |
| 12 | WELD | 1 |
| 13 | WELD | 1 |
| 14 | WELD | 1 |
| 15 | WELD | 1 |
| 16 | WELD | 1 |
| 17 | WELD | 1 |
| 18 | WELD | 1 |

| WELD LENGTH | WELD TYPE | WELD QTY |
|-------------|-----------|----------|
| 1 | WELD | 1 |
| 2 | WELD | 1 |
| 3 | WELD | 1 |
| 4 | WELD | 1 |
| 5 | WELD | 1 |
| 6 | WELD | 1 |
| 7 | WELD | 1 |
| 8 | WELD | 1 |
| 9 | WELD | 1 |
| 10 | WELD | 1 |
| 11 | WELD | 1 |
| 12 | WELD | 1 |
| 13 | WELD | 1 |
| 14 | WELD | 1 |
| 15 | WELD | 1 |
| 16 | WELD | 1 |
| 17 | WELD | 1 |
| 18 | WELD | 1 |

| WELD LENGTH | WELD TYPE | WELD QTY |
|-------------|-----------|----------|
| 1 | WELD | 1 |
| 2 | WELD | 1 |
| 3 | WELD | 1 |
| 4 | WELD | 1 |
| 5 | WELD | 1 |
| 6 | WELD | 1 |
| 7 | WELD | 1 |
| 8 | WELD | 1 |
| 9 | WELD | 1 |
| 10 | WELD | 1 |
| 11 | WELD | 1 |
| 12 | WELD | 1 |
| 13 | WELD | 1 |
| 14 | WELD | 1 |
| 15 | WELD | 1 |
| 16 | WELD | 1 |
| 17 | WELD | 1 |
| 18 | WELD | 1 |

| WELD LENGTH | WELD TYPE | WELD QTY |
|-------------|-----------|----------|
| 1 | WELD | 1 |
| 2 | WELD | 1 |
| 3 | WELD | 1 |
| 4 | WELD | 1 |
| 5 | WELD | 1 |
| 6 | WELD | 1 |
| 7 | WELD | 1 |
| 8 | WELD | 1 |
| 9 | WELD | 1 |
| 10 | WELD | 1 |
| 11 | WELD | 1 |
| 12 | WELD | 1 |
| 13 | WELD | 1 |
| 14 | WELD | 1 |
| 15 | WELD | 1 |
| 16 | WELD | 1 |
| 17 | WELD | 1 |
| 18 | WELD | 1 |

| WELD LENGTH | WELD TYPE | WELD QTY |
|-------------|-----------|----------|
| 1 | WELD | 1 |
| 2 | WELD | 1 |
| 3 | WELD | 1 |
| 4 | WELD | 1 |
| 5 | WELD | 1 |
| 6 | WELD | 1 |
| 7 | WELD | 1 |
| 8 | WELD | 1 |
| 9 | WELD | 1 |
| 10 | WELD | 1 |
| 11 | WELD | 1 |
| 12 | WELD | 1 |
| 13 | WELD | 1 |
| 14 | WELD | 1 |
| 15 | WELD | 1 |
| 16 | WELD | 1 |
| 17 | WELD | 1 |
| 18 | WELD | 1 |

| WELD LENGTH | WELD TYPE | WELD QTY |
|-------------|-----------|----------|
| 1 | WELD | 1 |
| 2 | WELD | 1 |
| 3 | WELD | 1 |
| 4 | WELD | 1 |
| 5 | WELD | 1 |
| 6 | WELD | 1 |
| 7 | WELD | 1 |
| 8 | WELD | 1 |
| 9 | WELD | 1 |
| 10 | WELD | 1 |
| 11 | WELD | 1 |
| 12 | WELD | 1 |
| 13 | WELD | 1 |
| 14 | WELD | 1 |
| 15 | WELD | 1 |
| 16 | WELD | 1 |
| 17 | WELD | 1 |
| 18 | WELD | 1 |

| WELD LENGTH | WELD TYPE | WELD QTY |
|-------------|-----------|----------|
| 1 | WELD | 1 |
| 2 | WELD | 1 |
| 3 | WELD | 1 |
| 4 | WELD | 1 |
| 5 | WELD | 1 |
| 6 | WELD | 1 |
| 7 | WELD | 1 |
| 8 | WELD | 1 |
| 9 | WELD | 1 |
| 10 | WELD | 1 |
| 11 | WELD | 1 |
| 12 | WELD | 1 |
| 13 | WELD | 1 |
| 14 | WELD | 1 |
| 15 | WELD | 1 |
| 16 | WELD | 1 |
| 17 | WELD | 1 |
| 18 | WELD | 1 |

| | | |
|-------------|-----------|----------|
| WELD LENGTH | WELD TYPE | WELD QTY |
| 1 | WELD | 1 |
| 2 | WELD | 1 |
| 3 | WELD | 1 |
| 4 | WELD | 1 |
| 5 | WELD | 1 |
| 6 | WELD | 1 |
| 7 | WELD | 1 |

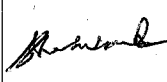
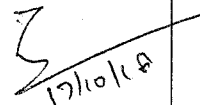

ICF AMENDMENT-01

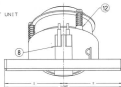
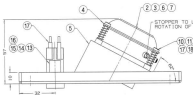
ICF AMENDMENT 01 TO RDSO SPEC.NO. RDSO/PE/SPEC/TL/0091-2016 REV.1

SUB: SPECIFICATION FOR ENERGY EFFICIENT LED BASED LUMINAIRE UNITS FOR PASSENGER COACHES:

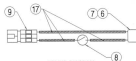
1. In Page No.21, Annexure – 3, S.No. 38 shall be added as follows:

| Description | Type of fitting | Drg.No. |
|--|-----------------|-------------------|
| 38. LED Foot step light fitting for LHB Non-AC second Class Cum luggage and Brake Van with compartment (LSLRD coach) | Type U (9W) | ICF/STD – 7-6-056 |

| | | | | |
|--|---|--|---|----------------|
| ICF AMENDMENT NO.01 TO RDSO SPEC.NO. RDSO/PE/SPEC/TL/0091- 2016 REV.1 |  |  |  | PAGE 1 OF 1 |
| DATE: 15.10.18 | SSE/D | DY.CEE/D | CDE/E | PAGE NO. |



ISO-VIEW



WIRING DIAGRAM

TABLE-1

DETAILS OF TERMINAL CONNECTOR

| DESCRIPTION | CAT.NO. | QTY/FITTING |
|----------------------------------|---|-------------|
| MALE CONNECTOR WITH CAGE CLAMP | (721-001) OF M/S WAGO AND SIMILAR IN PHOENIX MAKE | 1 |
| FEMALE CONNECTOR WITH CAGE CLAMP | (721-003/005-000) OF M/S WAGO AND SIMILAR IN PHOENIX MAKE | 1 |

BOTTOM - VIEW

- ITEM-18 SHALL BE COLOUR MODIFIED TO MATCH WITH THE COLOUR SHADE OF THE FITTING AND SHALL BE SUPPLIED LOOSE FOR EACH FITTING.
- ADJUSTABLE STOPPER TO BE PROVIDED TO LOCK COUNTER-CLOCK ROTATION OF THE SPOT UNIT.
- ADJUSTABLE HEAD SHANK WITH PROPER THERMAL MANAGEMENT SHALL BE PROVIDED WITH LED MODULE.
- LED CIRCUIT MODULE SHALL BE THE PART OF THE LED (INTEGRATED TYPE) MADE OF NON-METALLIC PBT MATERIAL AND UNIVERSAL DESIGN SUITABLE FOR 110V AC/DC SUPPLY. THE OPERATING VOLTAGE SHALL VARY FROM 90V TO 140V WITH 15% TOLERANCE.
- ENTIRE WIRING AND NOTCHES SHALL BE COVERED WITH 1MM THICK FIRE RETARDANT COVER AND SHALL BE SECURED WITH THE HELP OF ITEM-14.
- WIRING TO BE DONE WITH 1.0 SQ.MM. PTFE CABLE OR 0.75 SQ.MM. PTFE CABLE OF 90°C APPROVED MAKE ONLY.
- ITEMS-2 & 3 TO BE COIL MODIFIED TO 16.16MM. GR-AC 5.
- TERMINAL CONNECTOR SHALL BE OF CAGE CLAMP TYPE WAGO/PHOENIX MAKE AS INDICATED IN TABLE-1.
- ALL STEEL ITEMS EXCLUDING HARDWARE SHALL BE OVEN SURFACE TREATMENT FOR ANTI-RUST & ANTI-CORROSION BEFORE FINISHING WITH POWDER COATING TECHNIQUE OF POWDER COATING SHALL NOT BE LESS THAN 60 MICRONS TO WHITE COLOUR (SHADE NO.042 "OFF WHITE") OF M/S BANGOR OR SIMILAR (IN M/S ASIAN / M/S HEROLAC MAKE PAINT) WITH GLOSSY FINISH.
- ONLY TIG WELDING SHALL BE DONE AS PER REQUIREMENT. NO OTHER WELDING IS ACCEPTABLE.
- FINISHED MOUNTING DIMENSIONS ARE TO BE STRICTLY ADHERED TO BY JIG FINISHING.
- ALL DIMENSIONS IN MM.

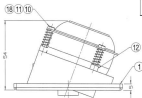
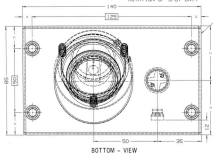
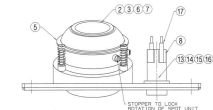
NOTE:-

DETAIL DROS STARTING WITH "L1" ARE INTERNAL REFERENCE LISTS ONLY AND ARE NOT FOR ISSUE

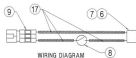
ANY MANUAL ALTERATION SHALL AUTOMATICALLY RENDER THIS DRAWING INVALID.

FOR UNTERLANCED DIMENSIONS REFER HDG0086 DATE OF FIRST ISSUE 20/05/2016

| DATE | REV. | DATE | DESCRIPTION | AUTHORITY |
|------------|------|------|--|-----------|
| 01/08/2016 | 01 | | 1. 170W NO-T PART NO. CHANGED FROM 205.120.0001.00 TO 205.120.0002.00 2. 170W NO-T PART NO. 01/31/15, 01/31/16, 01/31/17, 01/31/18, 01/31/19, 01/31/20, 01/31/21, 01/31/22, 01/31/23, 01/31/24, 01/31/25, 01/31/26, 01/31/27, 01/31/28, 01/31/29, 01/31/30, 01/31/31, 01/31/32, 01/31/33, 01/31/34, 01/31/35, 01/31/36, 01/31/37, 01/31/38, 01/31/39, 01/31/40, 01/31/41, 01/31/42, 01/31/43, 01/31/44, 01/31/45, 01/31/46, 01/31/47, 01/31/48, 01/31/49, 01/31/50, 01/31/51, 01/31/52, 01/31/53, 01/31/54, 01/31/55, 01/31/56, 01/31/57, 01/31/58, 01/31/59, 01/31/60, 01/31/61, 01/31/62, 01/31/63, 01/31/64, 01/31/65, 01/31/66, 01/31/67, 01/31/68, 01/31/69, 01/31/70, 01/31/71, 01/31/72, 01/31/73, 01/31/74, 01/31/75, 01/31/76, 01/31/77, 01/31/78, 01/31/79, 01/31/80, 01/31/81, 01/31/82, 01/31/83, 01/31/84, 01/31/85, 01/31/86, 01/31/87, 01/31/88, 01/31/89, 01/31/90, 01/31/91, 01/31/92, 01/31/93, 01/31/94, 01/31/95, 01/31/96, 01/31/97, 01/31/98, 01/31/99, 01/31/100, 01/31/101, 01/31/102, 01/31/103, 01/31/104, 01/31/105, 01/31/106, 01/31/107, 01/31/108, 01/31/109, 01/31/110, 01/31/111, 01/31/112, 01/31/113, 01/31/114, 01/31/115, 01/31/116, 01/31/117, 01/31/118, 01/31/119, 01/31/120, 01/31/121, 01/31/122, 01/31/123, 01/31/124, 01/31/125, 01/31/126, 01/31/127, 01/31/128, 01/31/129, 01/31/130, 01/31/131, 01/31/132, 01/31/133, 01/31/134, 01/31/135, 01/31/136, 01/31/137, 01/31/138, 01/31/139, 01/31/140, 01/31/141, 01/31/142, 01/31/143, 01/31/144, 01/31/145, 01/31/146, 01/31/147, 01/31/148, 01/31/149, 01/31/150, 01/31/151, 01/31/152, 01/31/153, 01/31/154, 01/31/155, 01/31/156, 01/31/157, 01/31/158, 01/31/159, 01/31/160, 01/31/161, 01/31/162, 01/31/163, 01/31/164, 01/31/165, 01/31/166, 01/31/167, 01/31/168, 01/31/169, 01/31/170, 01/31/171, 01/31/172, 01/31/173, 01/31/174, 01/31/175, 01/31/176, 01/31/177, 01/31/178, 01/31/179, 01/31/180, 01/31/181, 01/31/182, 01/31/183, 01/31/184, 01/31/185, 01/31/186, 01/31/187, 01/31/188, 01/31/189, 01/31/190, 01/31/191, 01/31/192, 01/31/193, 01/31/194, 01/31/195, 01/31/196, 01/31/197, 01/31/198, 01/31/199, 01/31/200, 01/31/201, 01/31/202, 01/31/203, 01/31/204, 01/31/205, 01/31/206, 01/31/207, 01/31/208, 01/31/209, 01/31/210, 01/31/211, 01/31/212, 01/31/213, 01/31/214, 01/31/215, 01/31/216, 01/31/217, 01/31/218, 01/31/219, 01/31/220, 01/31/221, 01/31/222, 01/31/223, 01/31/224, 01/31/225, 01/31/226, 01/31/227, 01/31/228, 01/31/229, 01/31/230, 01/31/231, 01/31/232, 01/31/233, 01/31/234, 01/31/235, 01/31/236, 01/31/237, 01/31/238, 01/31/239, 01/31/240, 01/31/241, 01/31/242, 01/31/243, 01/31/244, 01/31/245, 01/31/246, 01/31/247, 01/31/248, 01/31/249, 01/31/250, 01/31/251, 01/31/252, 01/31/253, 01/31/254, 01/31/255, 01/31/256, 01/31/257, 01/31/258, 01/31/259, 01/31/260, 01/31/261, 01/31/262, 01/31/263, 01/31/264, 01/31/265, 01/31/266, 01/31/267, 01/31/268, 01/31/269, 01/31/270, 01/31/271, 01/31/272, 01/31/273, 01/31/274, 01/31/275, 01/31/276, 01/31/277, 01/31/278, 01/31/279, 01/31/280, 01/31/281, 01/31/282, 01/31/283, 01/31/284, 01/31/285, 01/31/286, 01/31/287, 01/31/288, 01/31/289, 01/31/290, 01/31/291, 01/31/292, 01/31/293, 01/31/294, 01/31/295, 01/31/296, 01/31/297, 01/31/298, 01/31/299, 01/31/300, 01/31/301, 01/31/302, 01/31/303, 01/31/304, 01/31/305, 01/31/306, 01/31/307, 01/31/308, 01/31/309, 01/31/310, 01/31/311, 01/31/312, 01/31/313, 01/31/314, 01/31/315, 01/31/316, 01/31/317, 01/31/318, 01/31/319, 01/31/320, 01/31/321, 01/31/322, 01/31/323, 01/31/324, 01/31/325, 01/31/326, 01/31/327, 01/31/328, 01/31/329, 01/31/330, 01/31/331, 01/31/332, 01/31/333, 01/31/334, 01/31/335, 01/31/336, 01/31/337, 01/31/338, 01/31/339, 01/31/340, 01/31/341, 01/31/342, 01/31/343, 01/31/344, 01/31/345, 01/31/346, 01/31/347, 01/31/348, 01/31/349, 01/31/350, 01/31/351, 01/31/352, 01/31/353, 01/31/354, 01/31/355, 01/31/356, 01/31/357, 01/31/358, 01/31/359, 01/31/360, 01/31/361, 01/31/362, 01/31/363, 01/31/364, 01/31/365, 01/31/366, 01/31/367, 01/31/368, 01/31/369, 01/31/370, 01/31/371, 01/31/372, 01/31/373, 01/31/374, 01/31/375, 01/31/376, 01/31/377, 01/31/378, 01/31/379, 01/31/380, 01/31/381, 01/31/382, 01/31/383, 01/31/384, 01/31/385, 01/31/386, 01/31/387, 01/31/388, 01/31/389, 01/31/390, 01/31/391, 01/31/392, 01/31/393, 01/31/394, 01/31/395, 01/31/396, 01/31/397, 01/31/398, 01/31/399, 01/31/400, 01/31/401, 01/31/402, 01/31/403, 01/31/404, 01/31/405, 01/31/406, 01/31/407, 01/31/408, 01/31/409, 01/31/410, 01/31/411, 01/31/412, 01/31/413, 01/31/414, 01/31/415, 01/31/416, 01/31/417, 01/31/418, 01/31/419, 01/31/420, 01/31/421, 01/31/422, 01/31/423, 01/31/424, 01/31/425, 01/31/426, 01/31/427, 01/31/428, 01/31/429, 01/31/430, 01/31/431, 01/31/432, 01/31/433, 01/31/434, 01/31/435, 01/31/436, 01/31/437, 01/31/438, 01/31/439, 01/31/440, 01/31/441, 01/31/442, 01/31/443, 01/31/444, 01/31/445, 01/31/446, 01/31/447, 01/31/448, 01/31/449, 01/31/450, 01/31/451, 01/31/452, 01/31/453, 01/31/454, 01/31/455, 01/31/456, 01/31/457, 01/31/458, 01/31/459, 01/31/460, 01/31/461, 01/31/462, 01/31/463, 01/31/464, 01/31/465, 01/31/466, 01/31/467, 01/31/468, 01/31/469, 01/31/470, 01/31/471, 01/31/472, 01/31/473, 01/31/474, 01/31/475, 01/31/476, 01/31/477, 01/31/478, 01/31/479, 01/31/480, 01/31/481, 01/31/482, 01/31/483, 01/31/484, 01/31/485, 01/31/486, 01/31/487, 01/31/488, 01/31/489, 01/31/490, 01/31/491, 01/31/492, 01/31/493, 01/31/494, 01/31/495, 01/31/496, 01/31/497, 01/31/498, 01/31/499, 01/31/500, 01/31/501, 01/31/502, 01/31/503, 01/31/504, 01/31/505, 01/31/506, 01/31/507, 01/31/508, 01/31/509, 01/31/510, 01/31/511, 01/31/512, 01/31/513, 01/31/514, 01/31/515, 01/31/516, 01/31/517, 01/31/518, 01/31/519, 01/31/520, 01/31/521, 01/31/522, 01/31/523, 01/31/524, 01/31/525, 01/31/526, 01/31/527, 01/31/528, 01/31/529, 01/31/530, 01/31/531, 01/31/532, 01/31/533, 01/31/534, 01/31/535, 01/31/536, 01/31/537, 01/31/538, 01/31/539, 01/31/540, 01/31/541, 01/31/542, 01/31/543, 01/31/544, 01/31/545, 01/31/546, 01/31/547, 01/31/548, 01/31/549, 01/31/550, 01/31/551, 01/31/552, 01/31/553, 01/31/554, 01/31/555, 01/31/556, 01/31/557, 01/31/558, 01/31/559, 01/31/560, 01/31/561, 01/31/562, 01/31/563, 01/31/564, 01/31/565, 01/31/566, 01/31/567, 01/31/568, 01/31/569, 01/31/570, 01/31/571, 01/31/572, 01/31/573, 01/31/574, 01/31/575, 01/31/576, 01/31/577, 01/31/578, 01/31/579, 01/31/580, 01/31/581, 01/31/582, 01/31/583, 01/31/584, 01/31/585, 01/31/586, 01/31/587, 01/31/588, 01/31/589, 01/31/590, 01/31/591, 01/31/592, 01/31/593, 01/31/594, 01/31/595, 01/31/596, 01/31/597, 01/31/598, 01/31/599, 01/31/600, 01/31/601, 01/31/602, 01/31/603, 01/31/604, 01/31/605, 01/31/606, 01/31/607, 01/31/608, 01/31/609, 01/31/610, 01/31/611, 01/31/612, 01/31/613, 01/31/614, 01/31/615, 01/31/616, 01/31/617, 01/31/618, 01/31/619, 01/31/620, 01/31/621, 01/31/622, 01/31/623, 01/31/624, 01/31/625, 01/31/626, 01/31/627, 01/31/628, 01/31/629, 01/31/630, 01/31/631, 01/31/632, 01/31/633, 01/31/634, 01/31/635, 01/31/636, 01/31/637, 01/31/638, 01/31/639, 01/31/640, 01/31/641, 01/31/642, 01/31/643, 01/31/644, 01/31/645, 01/31/646, 01/31/647, 01/31/648, 01/31/649, 01/31/650, 01/31/651, 01/31/652, 01/31/653, 01/31/654, 01/31/655, 01/31/656, 01/31/657, 01/31/658, 01/31/659, 01/31/660, 01/31/661, 01/31/662, 01/31/663, 01/31/664, 01/31/665, 01/31/666, 01/31/667, 01/31/668, 01/31/669, 01/31/670, 01/31/671, 01/31/672, 01/31/673, 01/31/674, 01/31/675, 01/31/676, 01/31/677, 01/31/678, 01/31/679, 01/31/680, 01/31/681, 01/31/682, 01/31/683, 01/31/684, 01/31/685, 01/31/686, 01/31/687, 01/31/688, 01/31/689, 01/31/690, 01/31/691, 01/31/692, 01/31/693, 01/31/694, 01/31/695, 01/31/696, 01/31/697, 01/31/698, 01/31/699, 01/31/700, 01/31/701, 01/31/702, 01/31/703, 01/31/704, 01/31/705, 01/31/706, 01/31/707, 01/31/708, 01/31/709, 01/31/710, 01/31/711, 01/31/712, 01/31/713, 01/31/714, 01/31/715, 01/31/716, 01/31/717, 01/31/718, 01/31/719, 01/31/720, 01/31/721, 01/31/722, 01/31/723, 01/31/724, 01/31/725, 01/31/726, 01/31/727, 01/31/728, 01/31/729, 01/31/730, 01/31/731, 01/31/732, 01/31/733, 01/31/734, 01/31/735, 01/31/736, 01/31/737, 01/31/738, 01/31/739, 01/31/740, 01/31/741, 01/31/742, 01/31/743, 01/31/744, 01/31/745, 01/31/746, 01/31/747, 01/31/748, 01/31/749, 01/31/750, 01/31/751, 01/31/752, 01/31/753, 01/31/754, 01/31/755, 01/31/756, 01/31/757, 01/31/758, 01/31/759, 01/31/760, 01/31/761, 01/31/762, 01/31/763, 01/31/764, 01/31/765, 01/31/766, 01/31/767, 01/31/768, 01/31/769, 01/31/770, 01/31/771, 01/31/772, 01/31/773, 01/31/774, 01/31/775, 01/31/776, 01/31/777, 01/31/778, 01/31/779, 01/31/780, 01/31/781, 01/31/782, 01/31/783, 01/31/784, 01/31/785, 01/31/786, 01/31/787, 01/31/788, 01/31/789, 01/31/790, 01/31/791, 01/31/792, 01/31/793, 01/31/794, 01/31/795, 01/31/796, 01/31/797, 01/31/798, 01/31/799, 01/31/800, 01/31/801, 01/31/802, 01/31/803, 01/31/804, 01/31/805, 01/31/806, 01/31/807, 01/31/808, 01/31/809, 01/31/810, 01/31/811, 01/31/812, 01/31/813, 01/31/814, 01/31/815, 01/31/816, 01/31/817, 01/31/818, 01/31/819, 01/31/820, 01/31/821, 01/31/822, 01/31/823, 01/31/824, 01/31/825, 01/31/826, 01/31/827, 01/31/828, 01/31/829, 01/31/830, 01/31/831, 01/31/832, 01/31/833, 01/31/834, 01/31/835, 01/31/836, 01/31/837, 01/31/838, 01/31/839, 01/31/840, 01/31/841, 01/31/842, 01/31/843, 01/31/844, 01/31/845, 01/31/846, 01/31/847, 01/31/848, 01/31/849, 01/31/850, 01/31/851, 01/31/852, 01/31/853, 01/31/854, 01/31/855, 01/31/856, 01/31/857, 01/31/858, 01/31/859, 01/31/860, 01/31/861, 01/31/862, 01/31/863, 01/31/864, 01/31/865, 01/31/866, 01/31/867, 01/31/868, 01/31/869, 01/31/870, 01/31/871, 01/31/872, 01/31/873, 01/31/874, 01/31/875, 01/31/876, 01/31/877, 01/31/878, 01/31/879, 01/31/880, 01/31/ | |



ISO - VIEW



WIRING DIAGRAM

TABLE-1
DETAILS OF TERMINAL CONNECTOR

| DESCRIPTION | CAT.NO. | QTY/FITTING |
|----------------------------------|---|-------------|
| MALE CONNECTOR WITH CASE CLAMP | (721-003) OF M/S WAGO AND SIMILAR IN PHOENIX MAKE | 1 |
| FEMALE CONNECTOR WITH CASE CLAMP | (721-003/026-000) OF M/S WAGO AND SIMILAR IN PHOENIX MAKE | 1 |

- ITEM-19 SHALL BE COLOUR ANODIZED TO MATCH WITH THE COLOUR SHADE OF THE FITTING AND SHALL BE SUPPLIED LOOSE FOR EACH FITTING.
- SUITSABLE STOPPER TO BE PROVIDED TO LOCK ELONGATION-LOCK ROTATION OF THE SPOT UNIT.
- APPROPRIATE HEAT SINK WITH PROPER THERMAL MANAGEMENT SHALL BE PROVIDED WITH LED MODULE.
- LED CIRCUIT MODULE SHALL BE THE PART OF THE LED (INTEGRATED TYPE) MADE OF NON-METALLIC PBT MATERIAL AND UNIVERSAL DESIGN SUITABLE FOR 120V AC/DC SUPPLY. THE OPERATING VOLTAGE SHALL VARY FROM 100V TO 140V WITH 10% TOLERANCE.
- ENTRANCE WIRING AND NOTCHES SHALL BE COMBED WITH THIN, THICK FINE RETENTANT SLEEVES AND ONLY SECURED WITH THE HELP OF ITEM-14.
- WIRING TO BE DONE WITH 1.5 SQ MM PTFE CABLE OR 2-STRAND CABLE OF R900 APPROVED MAKE ONLY.
- TERMINAL -2 & 3 TO BE BULL ANODIZED TO 20 YEARS SPAN.
- TERMINAL CONNECTOR SHALL BE OF CASE CLAMP TYPE AND IDENTIFIED AS INDICATED IN TABLE-1.
- ALL STEEL ITEMS INCLUDING HARDWARE SHALL BE GIVEN SURFACE TREATMENT FOR ANTI-RUST & ANTI-CORROSION BEFORE FINISHING WITH POWDER COATING THICKNESS OF POWDER COATING SHALL NOT BE LESS THAN 60 MICRONS TO WHITE COLOUR (SHADE NO.04) "P8 WHITE" OF M/S BANNER OR SIMILAR OR M/S HELAN / M/S HOSKOLD MAKE PAINTS WITH GLOSSY FINISH.
- PAINTS TO BE WELDED SHALL BE DONE AS PER REQUIREMENT NO OTHER WELDING IS ACCEPTABLE.
- FRAMES MOUNTING CONDITIONS ARE TO BE STRICTLY ADHERED TO BY JIS F000000.
- ALL DIMENSIONS IN MM.

NOTE:

DETAIL DROS STARTING WITH "LI" ARE INTERNAL REFERENCE LISTS ONLY AND ARE NOT FOR ISSUE

ANY MANUAL ALTERATION SHALL AUTOMATICALLY RENDER THIS DRAWING INVALID.

FOR UNTOLERANCED DIMENSIONS REFER M030008 DATE OF FIRST ISSUE 28/05/2016

| REV. | REV. DATE | REV. DESCRIPTION | REV. BY |
|------|------------|---|------------------|
| 01 | 28/05/2016 | 1. ITEM NO-7 PART NO. CHANGED FROM 25-126-0001-00 TO 25-126-0001-00. 2. ITEM NO-8 PART NO. CHANGED FROM 25-126-0001-00 TO 25-126-0001-00. 3. ITEM NO-9 PART NO. CHANGED FROM 25-126-0001-00 TO 25-126-0001-00. 4. ITEM NO-10 PART NO. CHANGED FROM 25-126-0001-00 TO 25-126-0001-00. | 01C/NO. 02/00000 |

| | | | | | |
|----|--|---|---------------|---------------|-------------|
| 19 | PHILLIP HEAD SCREW TAPPING SCREW 4.0X20-5 | 4 | 15-100-000000 | 15-100-000000 | SEE NOTE-12 |
| 18 | PLAIN WASHER Ø 3.5 | 3 | 15-100-000000 | 15-100-000000 | NIL |
| 17 | FINE RETENTANT SLEEVE 12X0.5X0.5 | 1 | NEL | NEL | AS REQUIRED |
| 16 | HEX NUT M6 | 1 | 15-100-000000 | 15-100-000000 | NIL |
| 15 | CHEESE HD. SCREW M6X8 | 1 | 15-100-000000 | 15-100-000000 | NIL |
| 14 | P-CLAMP | 1 | 15-100-000000 | NEL | ITEM-8 |
| 13 | BRACKET | 1 | 15-100-000000 | NEL | ITEM-8 |
| 12 | SCREWING PIECE Ø 6MM | 3 | 15-100-000000 | NEL | NIL |
| 11 | STEEL SPRING 12H-5 | 3 | NEL | 15-100-000000 | ITEM-8 |
| 10 | CHEESE HD. SCREW M6X8 | 3 | 15-100-000000 | 15-100-000000 | NIL |
| 9 | TERMINAL CONNECTOR CASE CLAMP TYPE | 1 | NEL | NEL | SEE NOTE-5 |
| 8 | PUSH BUTTON (PUSH ON-PUSH OFF) WITH TERMINAL COVER | 1 | NEL | NEL | SEE NOTE-5 |
| 7 | LED CONNECTOR | 1 | NEL | NEL | SEE NOTE-5 |
| 6 | LED WITH CREDIT MODULE WITH 140MMX140MM X 14MM DIM | 1 | NEL | NEL | SEE NOTE-5 |
| 5 | WELDING ROD | 1 | 15-100-000000 | NEL | ITEM-4 |
| 4 | TUBE ASSEMBLY | 1 | 15-100-000000 | NEL | ITEM-4 |
| 3 | LAMP HOLDING RING | 1 | 15-100-000000 | NEL | ITEM-2 |
| 2 | SPOT UNIT | 1 | 15-100-000000 | NEL | ITEM-1 |
| 1 | FRONT COVER | 1 | 15-100-000000 | NEL | NIL |

| WELD LENGTH | TYPE | DESCRIPTION & DIMENSIONS | QUANTITY | DETAILS | REMARKS |
|-------------|-------|--------------------------|----------|---------------|------------|
| NEL | GROUP | WELDING ROD | 1 | 15-100-000000 | SEE NOTE-5 |
| NEL | WELD | WELDING ROD | 1 | 15-100-000000 | SEE NOTE-5 |
| NEL | WELD | WELDING ROD | 1 | 15-100-000000 | SEE NOTE-5 |
| NEL | WELD | WELDING ROD | 1 | 15-100-000000 | SEE NOTE-5 |
| NEL | WELD | WELDING ROD | 1 | 15-100-000000 | SEE NOTE-5 |
| NEL | WELD | WELDING ROD | 1 | 15-100-000000 | SEE NOTE-5 |
| NEL | WELD | WELDING ROD | 1 | 15-100-000000 | SEE NOTE-5 |
| NEL | WELD | WELDING ROD | 1 | 15-100-000000 | SEE NOTE-5 |
| NEL | WELD | WELDING ROD | 1 | 15-100-000000 | SEE NOTE-5 |
| NEL | WELD | WELDING ROD | 1 | 15-100-000000 | SEE NOTE-5 |

LED LIGHT FITTING FOR BERTH READING LIGHT

(TRANSVERSE LOWER BERTHS FOR LWB DECK, TYPE-12000)

(AS PER SPEC. NO. R050/PE/SPEC/TL/0091-2016, REV.1)

DATE: 28/05/2016

BY: [Signature]

FOR: [Signature]

REVISION

DATE: 28/05/2016

BY: [Signature]

FOR: [Signature]

SCALE

UNIT

BY: [Signature]

FOR: [Signature]

REVISION

DATE: 28/05/2016

BY: [Signature]

FOR: [Signature]

REVISION

DATE: 28/05/2016

BY: [Signature]

FOR: [Signature]