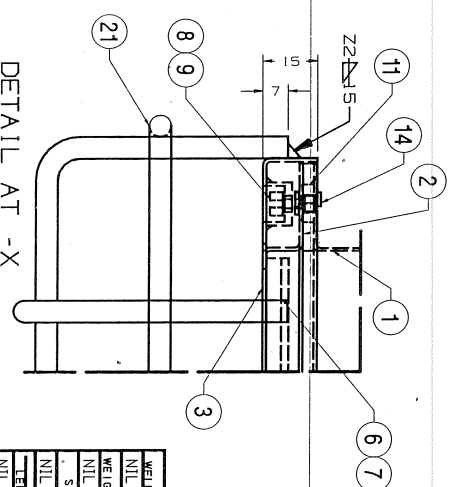
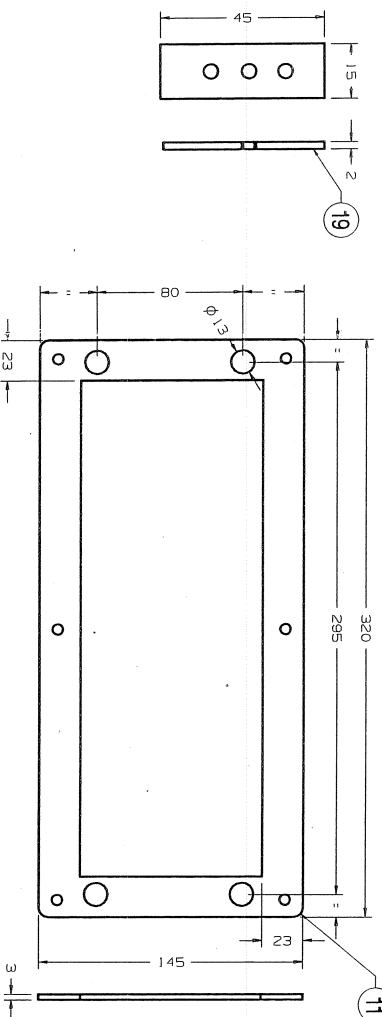


TABLE-1 DETAILS OF TERMINAL CONNECTOR		
DESCRIPTIONS	CAT. NO. & QTY.	QTY.
2-CONDUCTOR TERMINAL STRIP	251-102 OF M/S WAGO OR SIMILAR IN PHOENIX MAKE.	2



SCHEMATIC DIAGRAM FOR LED LIGHT
(FOR REFERENCE ONLY)


13. THE TONGUED END GASKET THICKNESS 3-4mm OF M/S SAINT GOBAIN/ASAHI INDIA/BOROSIL OR EQUIVALENT MAKE (PRIOR APPROVAL SHALL BE TAKEN FROM CEDE RCF/KXXH) SHALL BE PROVIDED ON OUTSIDE OF POLYCARBONATE DIFFUSER IN COVER 1.e.
12. ITEM-2 TO ACHIVE 80% TRANSPARENCY AND COMPLETE DIFFUSION OF LIGHT SO THAT LIGHT SOURCE/SPOT IS NOT VISIBLE.
11. DIFFUSER MATERIAL SHALL BE CONFORMING TO UL 94V0 & MADE FROM 'LEXAN SP24-492X' FIRE RETARDANT POLYCARBONATE MATERIAL OF GE PLASTIC/50/50 MAKE OR EQUIVALENT WITH PRIOR APPROVAL OF CEDE. DIFFUSER THICKNESS SHALL NOT BE LESS THAN 1.5MM. AND SHALL BE FREE FROM SCRATCHES, AIR BUBBLES, HOLES AND ULTRA-VIOLET STABILIZED.
10. HOUSING OF THE LED DRIVER SHALL BE MADE FROM 1MM. THICK STAINLESS STEEL SHEET MATERIAL TO SS-304 L/SS 304 S2 WITH DIMENSIONS FOR MAIN LED DRIVER (160X46X35MM, MAX.) AND MOUNTING DIMENSIONS FIXED TO 140MM.
9. WIRING TO BE DONE WITH 1.0 SQ.MM. PTFE CABLE OR E-BEAM CABLE OF RDSO APPROVED MAKE ONLY.
8. SCHEMATIC DIAGRAM, MANUFACTURER'S INSIGNIA SHALL BE SCREEN PRINTED ON ALUMINIUM PLATE AND PURCHASE ORDER AND S.NO. IN THE FORM OF 'YYYYMMNNNN' WHERE 'YYYY' STAND FOR YEAR 'MM' STAND FOR MONTH AND 'NNNN' STAND FOR RUNNING SERIAL NO. SHALL BE PUNCHED ON IT AS SHOWN IN LEGEND FOR PLATE AND RIVETTED AT THE BACK SIDE OF THE FITTING.
7. ITEM-1, 2 & 3 SHOULD BE DEEP DRAWN AND NOT FABRICATED.
6. SUITABLE FIRE PROOF GROMMETS TO BE PROVIDED FOR CABLE TRAVERSING TO THE LED DRIVER.
5. 3mm. EPDM SPOKE MAY BE IN SINGLE PIECE TO BE GLUED ALL AROUND AT LOCATIONS INDICATED ON DRAWING.
4. ONLY TIG/SPOT WELDING SHALL BE DONE AS PER THE REQUIREMENT, NO OTHER WELDING IS ACCEPTABLE.
3. DOME KEY SHALL BE SUPPLIED ONE NUMBER FOR EVERY 10 FITTINGS AS PER DRD.NO./CC76052.
2. TERMINAL CONNECTOR SHALL BE OF CAGE CLAMP TYPE WAGO/PHOENIX MAKE AS INDICATED IN TABLE-1.
1. FRAMED DIMENSIONS ARE TO BE STRICTLY ADHERED TO BY JIG PUNCHING..
1. ALL DIMENSIONS IN MM.

DETAIL AT -X

ALT.NO	ALT.DATE	ZONE	ALTERATIONS	AUTHORITY
13		10	11	19
14	09/09/2020	ALL	1. LED LIGHT FITTING FOR SIA COACHES SPECIFIED AS TYPE-11. (SEE-T/2). 2. LED LIGHT FITTING WITH STAINLESS STEEL HOUSING FOR LPHV COACHES SPECIFIED AS TYPE-12. (SEE-T/2/2).	DHAGE REQUEST NO. EDCR/2020-009

2. LED LIGHT FILLING WITH STAINLESS STEEL ROLLS COACHES SPECIFIED AS TYPE-J2. (SHEET-2/2).

CHANGE REQUEST NO.
ED/CR/2020-0009

ITEM	DESCRIPTION & DIMENSIONS	DRAWING	DETAIL	DWG.	MAT'L. & QTY.	REMARKS
WELL LENGTH	ELECTRICAL	SUPERSESS:	NIL			
GROUP	M	FILE: D:\Bikram\GCG76457528.DJT				
WEIGHT						
NIL	KG					
S. AREA						
NIL	M ²					
LED LIGHT FITTING FOR LYPH COACH, TYPE-J2 (9W) (AS PER SPEC.NO.RDSD/E/SPEC/TL/009-1-2016.REV.1)						
		SCALE	SEE'D			
		CAD				
		DRN				
		APPROV				

(AS PER SPEC.NO.RDS0/PE/SPEC/TL/0091-2016,REV.1)

DRN			

DRN	DRN
-----	-----

[illegible]
