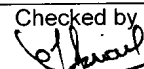


24	LED Light Fitting for Reading Light for LHB AC Chair Car (3 seater)	Type-Q2 (2 W)	RCF	LW76103
25	LED Light Fitting for LHB Non-AC Chair Car	Type-R (18 W)	RCF	LW76104 (3 Sheets)
26	LED Light Fitting for Conv. AC Chair Car, EMU & DEMU coaches	Type-S (18 W)	ICF	ICF/STD-7-6-047
27	LED Light Fitting for MEMU coaches (DMC/TC)	Type-T (18 W)	RCF	CC76460 (9 sheets)
PART DRAWING				
28	Diffuser for LHB type Coaches		RCF	LW76105
29	Frame for LED light fitting for LHB type AC chair Car		RCF	LW76106
30	LED Module box with diffuser		RCF	LW76107
31	Diffuser for LED light fitting for LHB Non AC Chair Car		RCF	LW76108
32	Details for berth reading lights		RCF	LW76109
33	Front Cover		RCF	LW76110
34	Front cover		RCF	LW76111
35	Front cover for Transverse Lower Berth (RHS)		RCF	LW76112
36	Front cover for Transverse Lower Berth (LHS)		RCF	LW76113
37	FRP bracket Assembly		RCF	LW76114

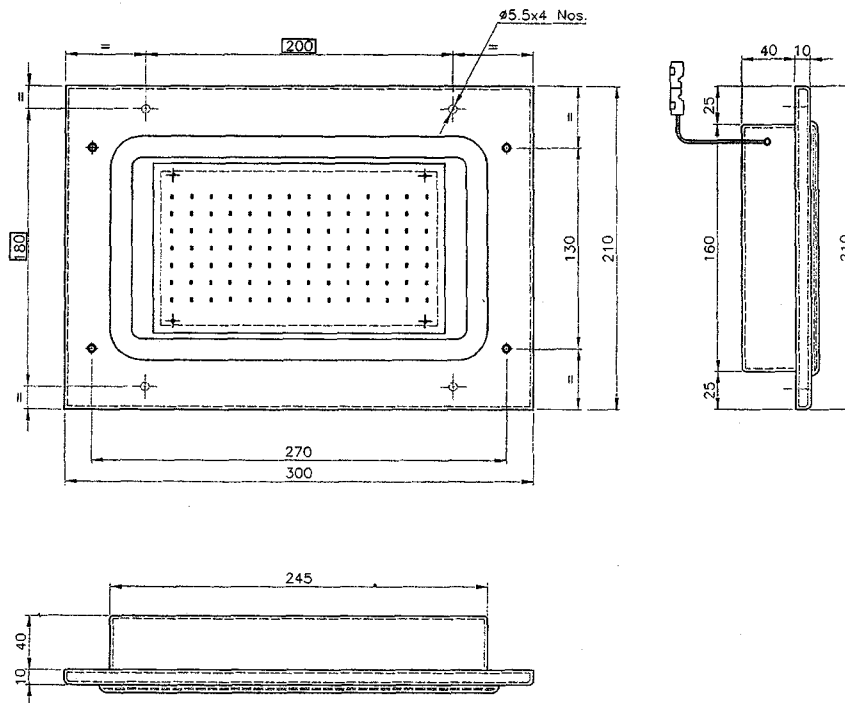
Prepared by


 JE/PE

Checked by


 05.7.2016
 Director / PE & Battery

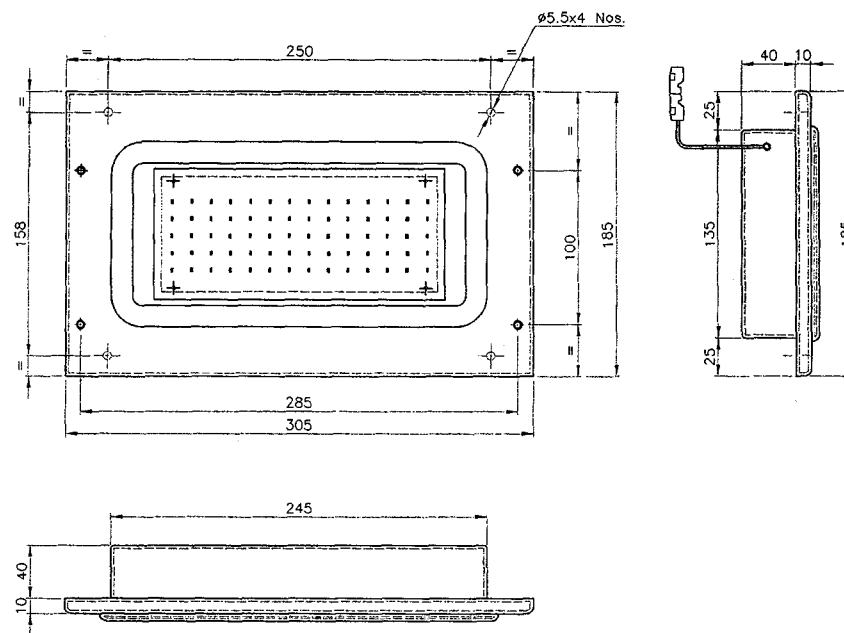
ALTERATIONS



				GROUP: 7-6				SUPERSEDED BY:					
				LED LIGHT FITTING, TYPE-B2 (9W) GANGWAY AREA OF ICF BUILT CONV. AC COACHES (AS PER SPEC. NO. RDSO/PE/SPEC/TL/0091-2016, REV.1)				SUPERSEDES:					
								SCALE 1:2.5		SSE/D		CHD.	
										ALT.			
										DRN		RATHARAJA	
				CAD FILE: ED-CAD\140 7-6 050 ---00.DWG				ALT					
ASSEMBLY DRAWINGS								INTEGRAL COACH FACTORY CHENNAI - 38					
20-05-2016				INDIAN RAILWAY STANDARDS				SHEET 1 OF 1		ICF/STD-7-6-050			
ALT. DATE OF LATEST ALT. DATE OF FIRST ISSUE DY.CEE/D				DATA CODE NO. 140									

ICF/STD-7-6-046

ALTERATIONS

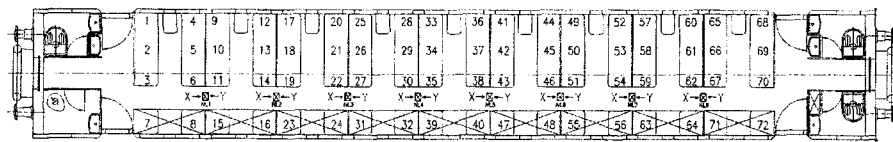


				IV	III	II	I	GROUP: 7-6	SUPERSEDED BY:	
								LED LIGHT FITTING, TYPE-C (9W)		
								FOR CABIN & CORRIDOR AREA OF ICF BUILT SCN COACHES		
								(AS PER SPEC. NO. RDSO/PE/SPEC/TL/0091-2016, REV.1)		
ASSEMBLY DRAWINGS								CAD FILE: ED-CAD\140 7-6 046---00.DWG		
				20-05-2016				DATA CODE NO.		INDIAN RAILWAY STANDARDS
				20-05-2016				140		
ALT.	DATE OF LATEST ALT.	DATE OF FIRST ISSUE	DY.CEE/D					SHEET 1 OF 1		ICF/STD-7-6-046

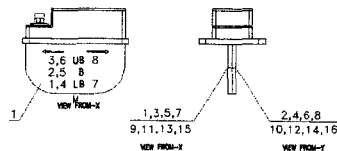
FORM IR A3 420x300



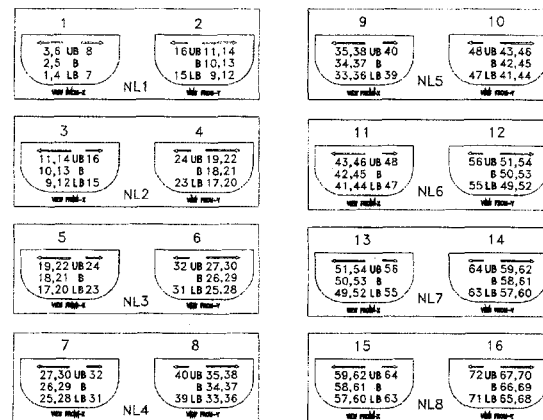
PDF created with pdfFactory Pro trial version www.pdffactory.com



REFERENCE DIAGRAM FOR SCN

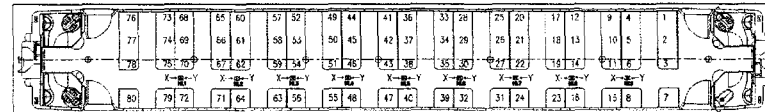


QTY./COACH - 5 FITTINGS WITH INSCRIPTION AS MENTIONED

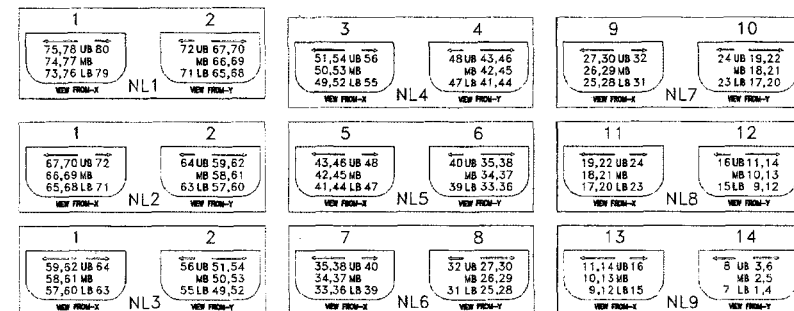


ITEM-5

COL-V



REFERENCE DIAGRAM FOR LSCN



QTY./COACH - 5 FITTINGS WITH INSCRIPTION AS MENTIONED

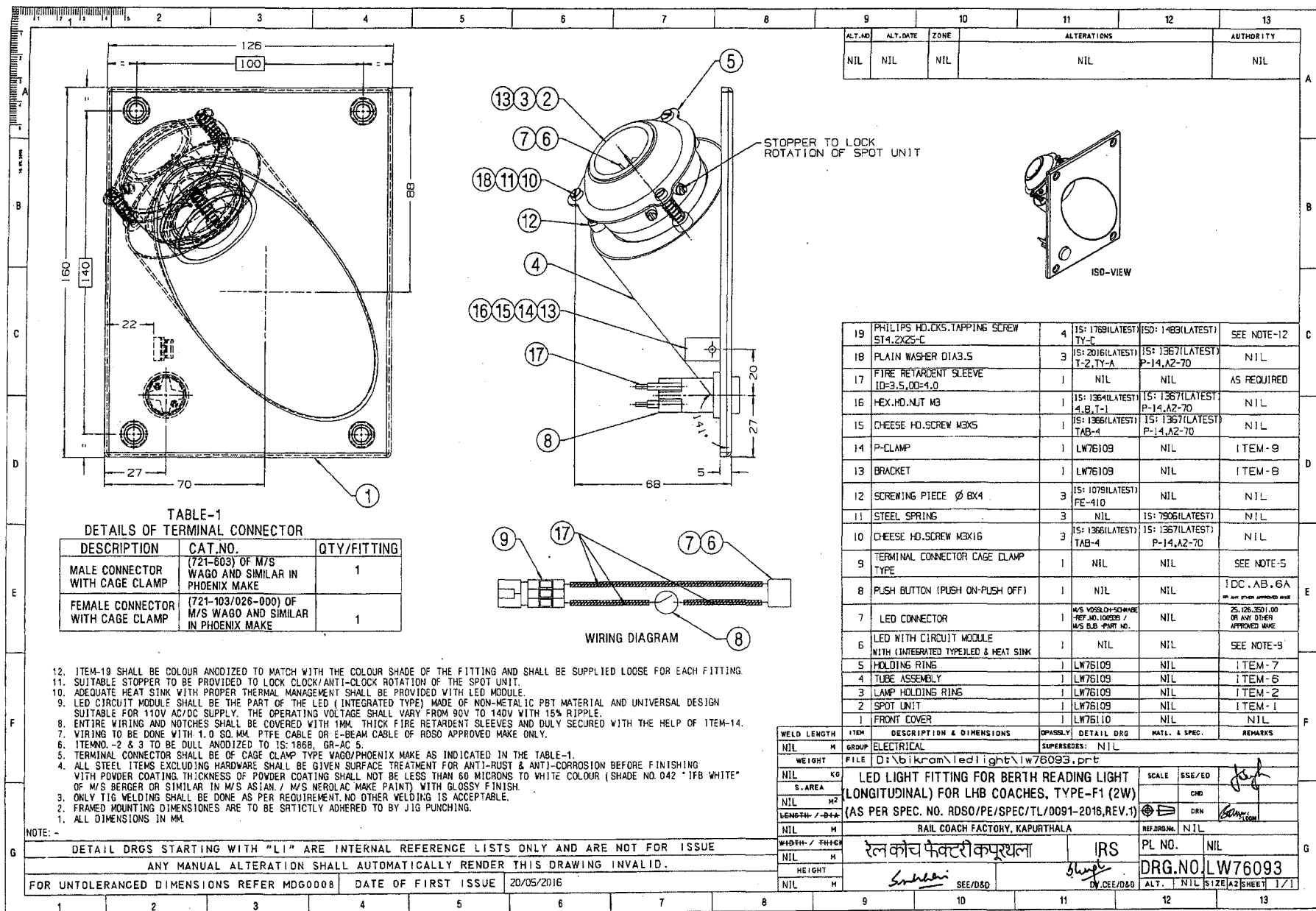
ITEM-7

COL-VI

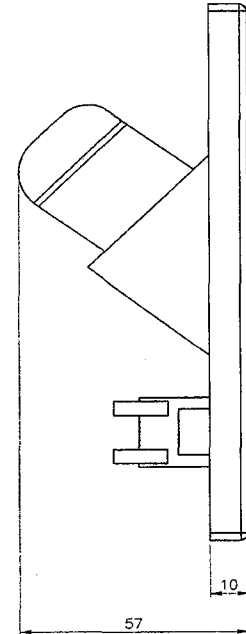
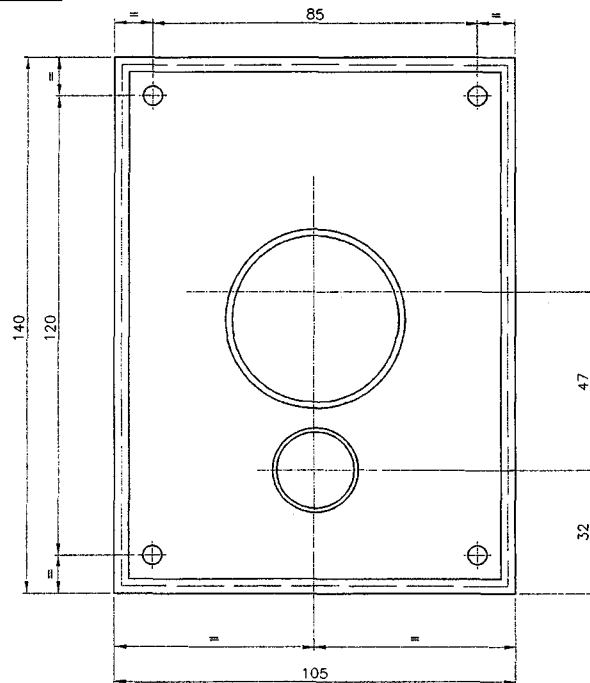
NO. OF ASSY. REQUIRED/COACH

COL	I	II	III	IV	V	VI
WOODWAC	1	1	-	-	-	-
WOODWAC	1	-	1	-	-	-
WOODWAC	1	-	-	1	-	-
SCN	1	-	-	-	1	-
LSCN	1	-	-	-	-	1

NO.	OFF.	DESCRIPTION & DIMENSIONS	ITEM	REF. DES.	MAT. & SPEC.	WEIGHT/LWT	REMARKS
1	1	LED LIGHT FITTING, TYPE-E (1W)	6				COL-VI
2	1	LED LIGHT FITTING, TYPE-E (1W)	5				COL-VI
3	1	LED LIGHT FITTING, TYPE-E (1W)	4				COL-VI
4	1	LED LIGHT FITTING, TYPE-E (1W)	3				COL-VI
5	1	LED LIGHT FITTING, TYPE-E (1W)	2				COL-VI
6	1	LED LIGHT FITTING, TYPE-E (1W)	1				COL-VI
7	1	LED LIGHT FITTING, TYPE-E (1W)	1				COL-VI
8	1	LED LIGHT FITTING, TYPE-E (1W)	1				COL-VI
9	1	LED LIGHT FITTING, TYPE-E (1W)	1				COL-VI
10	1	LED LIGHT FITTING, TYPE-E (1W)	1				COL-VI
11	1	LED LIGHT FITTING, TYPE-E (1W)	1				COL-VI
12	1	LED LIGHT FITTING, TYPE-E (1W)	1				COL-VI
13	1	LED LIGHT FITTING, TYPE-E (1W)	1				COL-VI
14	1	LED LIGHT FITTING, TYPE-E (1W)	1				COL-VI
15	1	LED LIGHT FITTING, TYPE-E (1W)	1				COL-VI
16	1	LED LIGHT FITTING, TYPE-E (1W)	1				COL-VI
17	1	LED LIGHT FITTING, TYPE-E (1W)	1				COL-VI
18	1	LED LIGHT FITTING, TYPE-E (1W)	1				COL-VI
19	1	LED LIGHT FITTING, TYPE-E (1W)	1				COL-VI
20	1	LED LIGHT FITTING, TYPE-E (1W)	1				COL-VI
21	1	LED LIGHT FITTING, TYPE-E (1W)	1				COL-VI
22	1	LED LIGHT FITTING, TYPE-E (1W)	1				COL-VI
23	1	LED LIGHT FITTING, TYPE-E (1W)	1				COL-VI
24	1	LED LIGHT FITTING, TYPE-E (1W)	1				COL-VI
25	1	LED LIGHT FITTING, TYPE-E (1W)	1				COL-VI
26	1	LED LIGHT FITTING, TYPE-E (1W)	1				COL-VI
27	1	LED LIGHT FITTING, TYPE-E (1W)	1				COL-VI
28	1	LED LIGHT FITTING, TYPE-E (1W)	1				COL-VI
29	1	LED LIGHT FITTING, TYPE-E (1W)	1				COL-VI
30	1	LED LIGHT FITTING, TYPE-E (1W)	1				COL-VI
31	1	LED LIGHT FITTING, TYPE-E (1W)	1				COL-VI
32	1	LED LIGHT FITTING, TYPE-E (1W)	1				COL-VI
33	1	LED LIGHT FITTING, TYPE-E (1W)	1				COL-VI
34	1	LED LIGHT FITTING, TYPE-E (1W)	1				COL-VI
35	1	LED LIGHT FITTING, TYPE-E (1W)	1				COL-VI
36	1	LED LIGHT FITTING, TYPE-E (1W)	1				COL-VI
37	1	LED LIGHT FITTING, TYPE-E (1W)	1				COL-VI
38	1	LED LIGHT FITTING, TYPE-E (1W)	1				COL-VI
39	1	LED LIGHT FITTING, TYPE-E (1W)	1				COL-VI
40	1	LED LIGHT FITTING, TYPE-E (1W)	1				COL-VI
41	1	LED LIGHT FITTING, TYPE-E (1W)	1				COL-VI
42	1	LED LIGHT FITTING, TYPE-E (1W)	1				COL-VI
43	1	LED LIGHT FITTING, TYPE-E (1W)	1				COL-VI
44	1	LED LIGHT FITTING, TYPE-E (1W)	1				COL-VI
45	1	LED LIGHT FITTING, TYPE-E (1W)	1				COL-VI
46	1	LED LIGHT FITTING, TYPE-E (1W)	1				COL-VI
47	1	LED LIGHT FITTING, TYPE-E (1W)	1				COL-VI
48	1	LED LIGHT FITTING, TYPE-E (1W)	1				COL-VI
49	1	LED LIGHT FITTING, TYPE-E (1W)	1				COL-VI
50	1	LED LIGHT FITTING, TYPE-E (1W)	1				COL-VI
51	1	LED LIGHT FITTING, TYPE-E (1W)	1				COL-VI
52	1	LED LIGHT FITTING, TYPE-E (1W)	1				COL-VI
53	1	LED LIGHT FITTING, TYPE-E (1W)	1				COL-VI
54	1	LED LIGHT FITTING, TYPE-E (1W)	1				COL-VI
55	1	LED LIGHT FITTING, TYPE-E (1W)	1				COL-VI
56	1	LED LIGHT FITTING, TYPE-E (1W)	1				COL-VI
57	1	LED LIGHT FITTING, TYPE-E (1W)	1				COL-VI
58	1	LED LIGHT FITTING, TYPE-E (1W)	1				COL-VI
59	1	LED LIGHT FITTING, TYPE-E (1W)	1				COL-VI
60	1	LED LIGHT FITTING, TYPE-E (1W)	1				COL-VI
61	1	LED LIGHT FITTING, TYPE-E (1W)	1				COL-VI
62	1	LED LIGHT FITTING, TYPE-E (1W)	1				COL-VI
63	1	LED LIGHT FITTING, TYPE-E (1W)	1				COL-VI
64	1	LED LIGHT FITTING, TYPE-E (1W)	1				COL-VI
65	1	LED LIGHT FITTING, TYPE-E (1W)	1				COL-VI
66	1	LED LIGHT FITTING, TYPE-E (1W)	1				COL-VI
67	1	LED LIGHT FITTING, TYPE-E (1W)	1				COL-VI
68	1	LED LIGHT FITTING, TYPE-E (1W)	1				COL-VI
69	1	LED LIGHT FITTING, TYPE-E (1W)	1				COL-VI
70	1	LED LIGHT FITTING, TYPE-E (1W)	1				COL-VI
71	1	LED LIGHT FITTING, TYPE-E (1W)	1				COL-VI
72	1	LED LIGHT FITTING, TYPE-E (1W)	1				COL-VI



ICF/STD-7-6-051

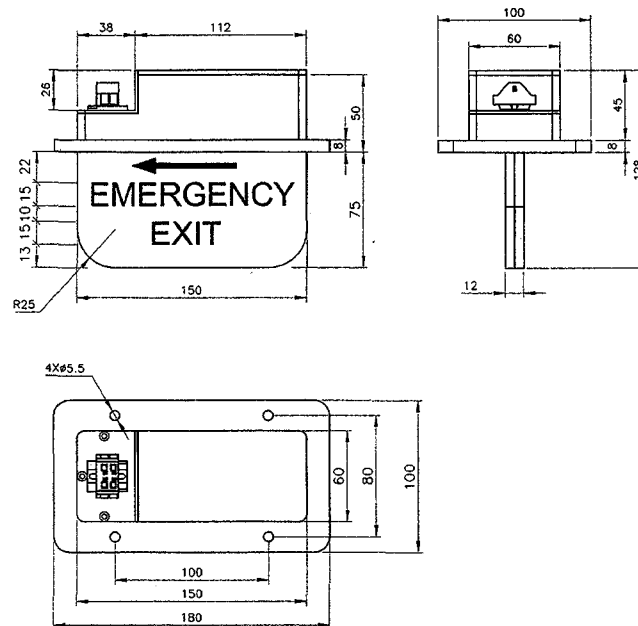


				GROUP: 7-6		SUPERSEDED BY:	
				LED LIGHT FITTING, TYPE-F5 (2W)		SUPERSEDES:	
				FOR BERTH READING LIGHT FOR CONVENTIONAL AC COACH		SCALE 1:2.5	
				(AS PER SPEC. NO. RDSO/PE/SPEC/TL/0091-2016, REV.1)		SSE/D	
						CHD.	
						ALT.	
						DRN	
						RATHARAJA	
						ALT	
				CAD FILE: ED-CAD\140 7-6 051---00.DWG		INTEGRAL COACH FACTORY	
				DATA CODE NO.		CHENNAI - 38	
				140		INDIAN RAILWAY	
				SHEET		ICF/STD-7-6-051	
				1 OF 1			
						FORM IR A3 420x300	

ASSEMBLY DRAWINGS			
20-05-2016			
ALT.	DATE OF LATEST ALT.	DATE OF FIRST ISSUE	DY.CEE/D

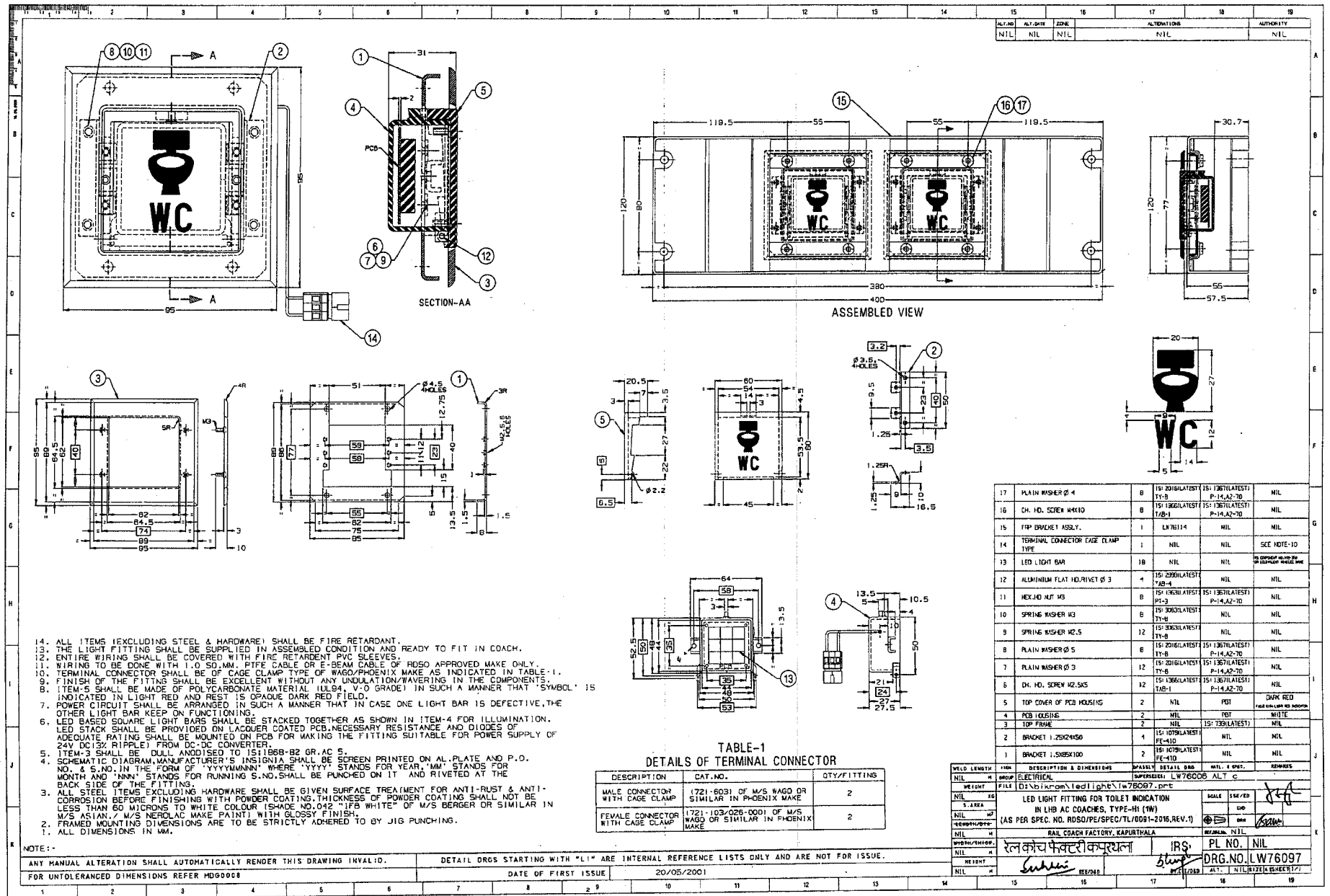
ICF/STD-7-6-049

ALTERATIONS



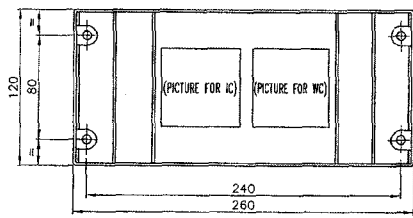
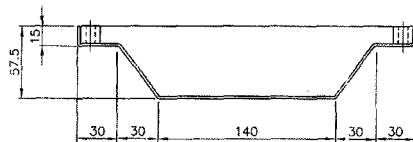
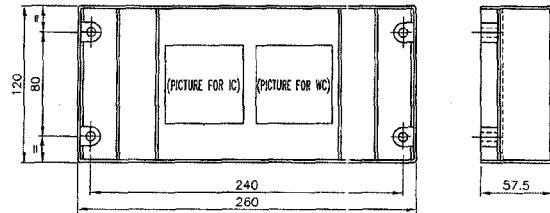
GROUP: 7-6				SUPERSEDED BY:	
LED LIGHT FITTING, TYPE-G (1W)				SUPERSEDES:	
FOR EMERGENCY EXIT INDICATION				SCALE SSE/D	
(AS PER SPEC. NO. RDSO/PE/SPEC/TL/0091-2016, REV.1)				1:2.5 CHD.	
				ALT.	
				DRN RATHARAJA	
CAD FILE: ED-CAD\140 7-6 049---00.DWG				ALT	
DATA CODE NO. 140				INTEGRAL COACH FACTORY CHENNAI - 38	
INDIAN RAILWAY STANDARDS				SHEET 1 OF 1	
ICF/STD-7-6-049					

FORM IR A3 420x300

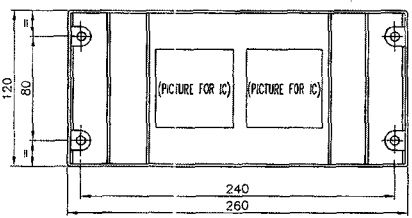


ICF/STD-7-6-052

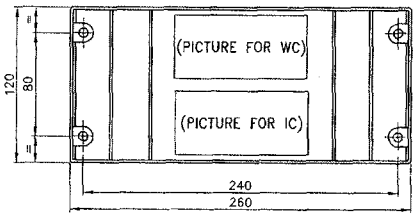
ALTERATIONS
 07/2016
 TOILET INDICATION LIGHT
 FOR WGACCN, WGSCWAC, WGSZAC
 AND WGFSCWAC COACHES
 ADDED.
 SSE/D
 DY.CEE/D



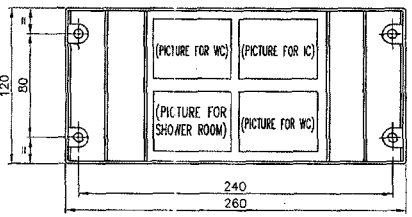
COL-I



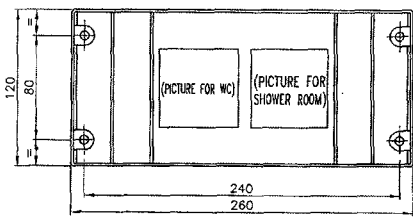
COL-II



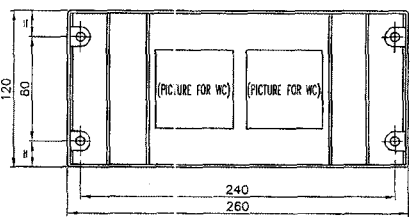
COL-III



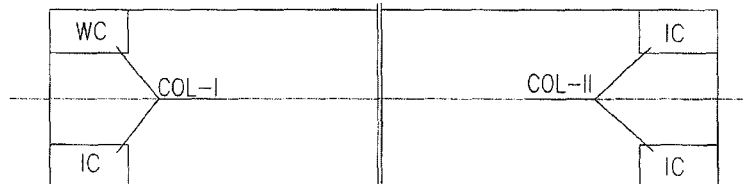
COL-IV



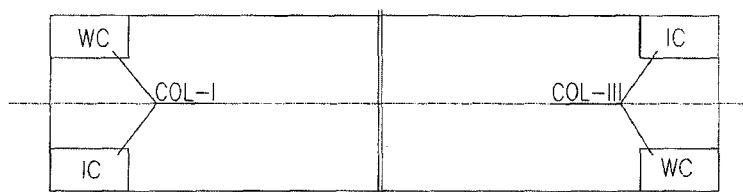
COL-V



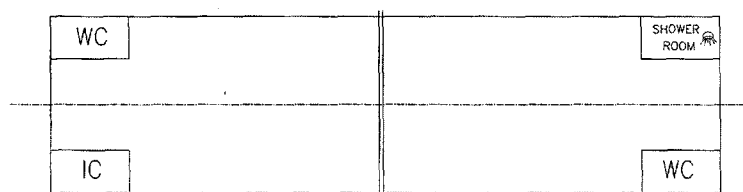
COL-VI



REF. DIAGRAM FOR WGACCN, WGSCWAC, & WGSZAC



REF. DIAGRAM FOR WGFSCWAC



REF. DIAGRAM FOR WGFAC

COL-IV

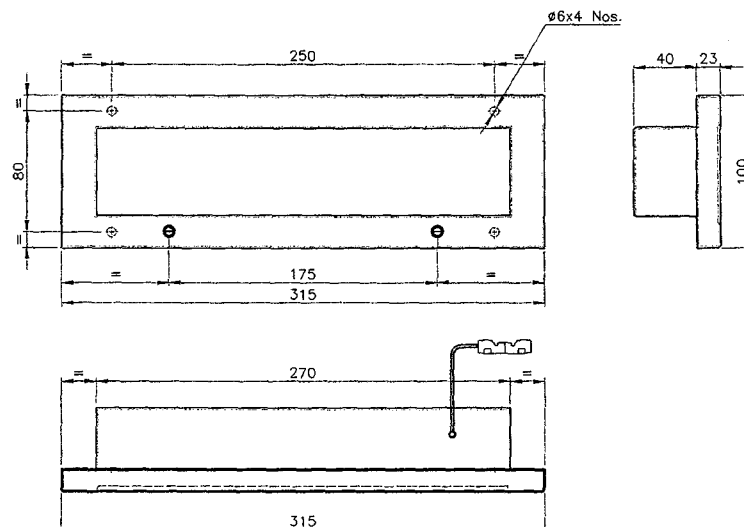
GROUP: 7-6				SUPERSEDED BY:	
LED LIGHT FITTING, TYPE - H2 (1W)				SUPERSEDES: ICF/STD-7-6-052/ALT-1	
FOR TOILET INDICATION IN CONV. AC COACHES				SCALE: 1:2.5	
(AS PER SPEC. NO. RDSO/PE/SPEC/TL/0091-2016, REV.1)				SSE/D: <i>[Signature]</i>	
CAD FILE: ED-CAD\140 7-6 052-SA00.DWG				CHD: N.SASIKUMAR	
DATA CODE NO. 140				ALT: RATHARAJA	
INDIAN RAILWAY STANDARDS				DRN: 0	
SHEET 1 OF 1				INTEGRAL COACH FACTORY CHENNAI - 38	
ICF/STD-7-6-052					

ASSEMBLY DRAWINGS	
07-2016	20-05-2016
ALT.	DATE OF LATEST ALT.
DATE OF FIRST ISSUE	DY.CEE/D

FORM SIZE A2 (600x420)

ICF/STD-7-6-048

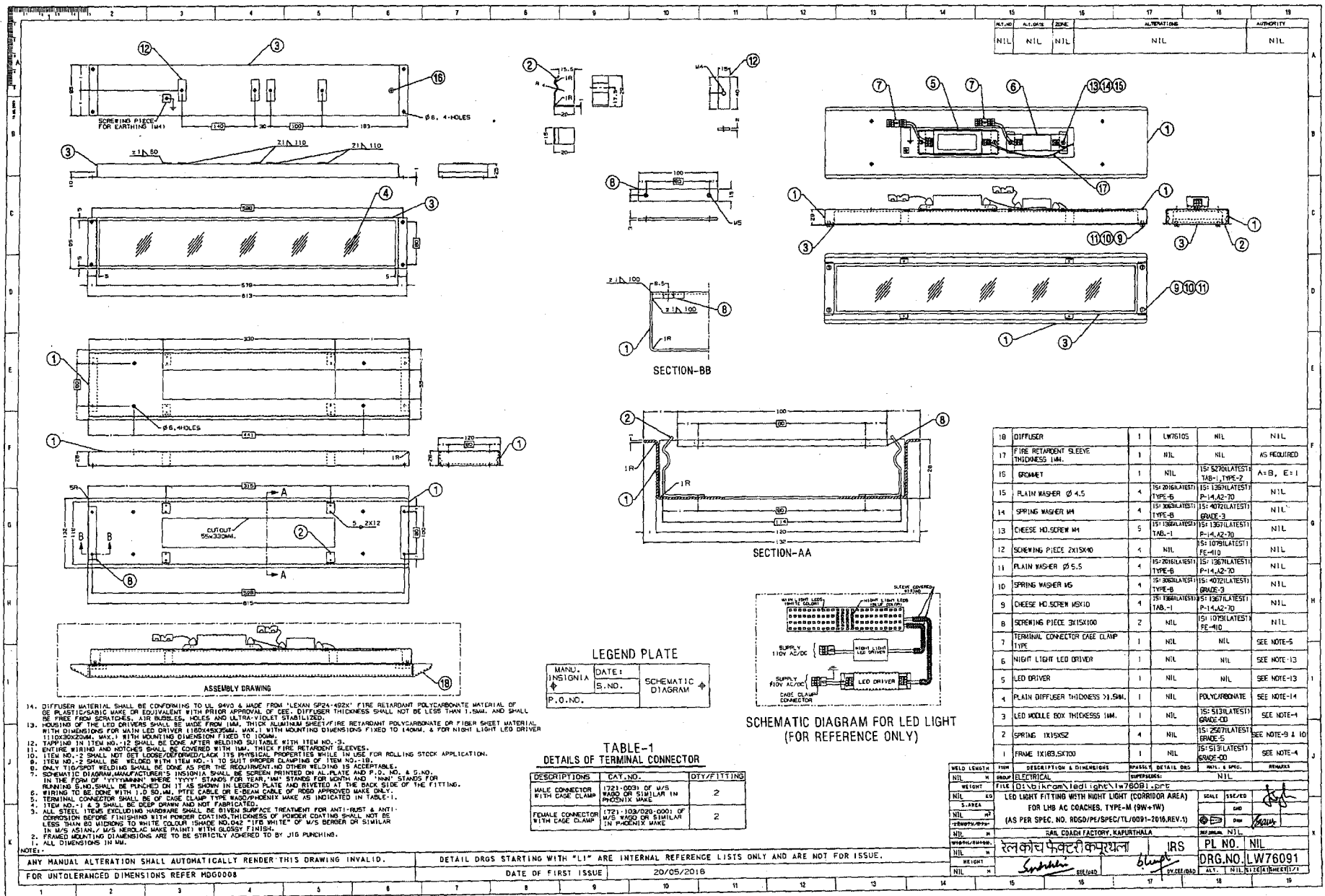
ALTERATIONS

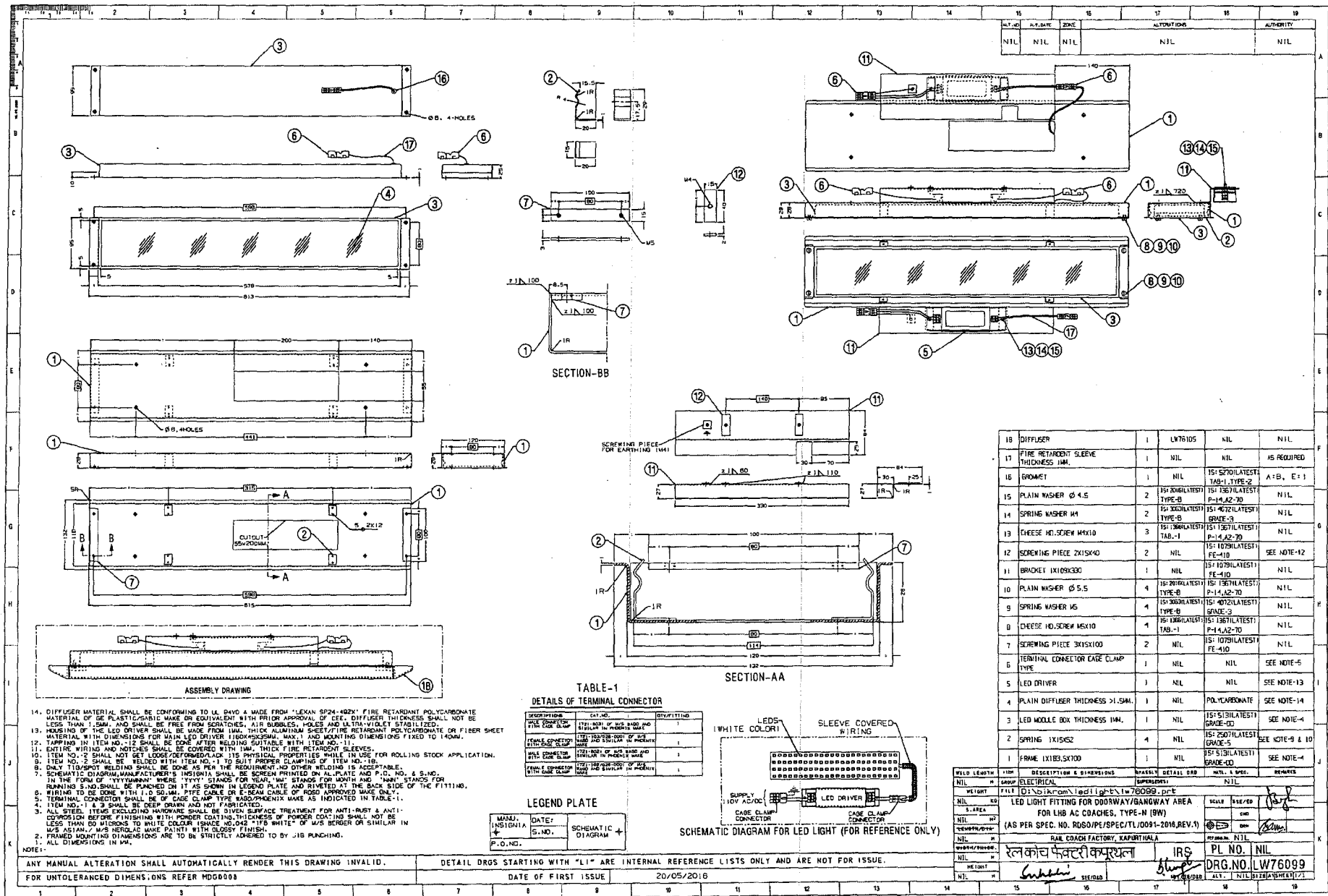


IV III II I				GROUP: 7-6		SUPERSEDED BY:	
				LED LIGHT FITTING, TYPE-K (9W)		SUPERSEDES:	
				FOR ENTRANCE DOORWAY AREA		SCALE: SSE/D	
				(AS PER SPEC. NO. RDSO/PE/SPEC/TL/0091-2016, REV.1)		1:2.5 CHD.	
				CAD FILE: ED-CAD\140 7-6 048---00.DWG		ALT.	
				DATA CODE NO. 140		DRN RATHARAJA	
				INDIAN RAILWAY STANDARDS		INTEGRAL COACH FACTORY CHENNAI - 38	
				SHEET 1 OF 1		ICF/STD-7-6-048	

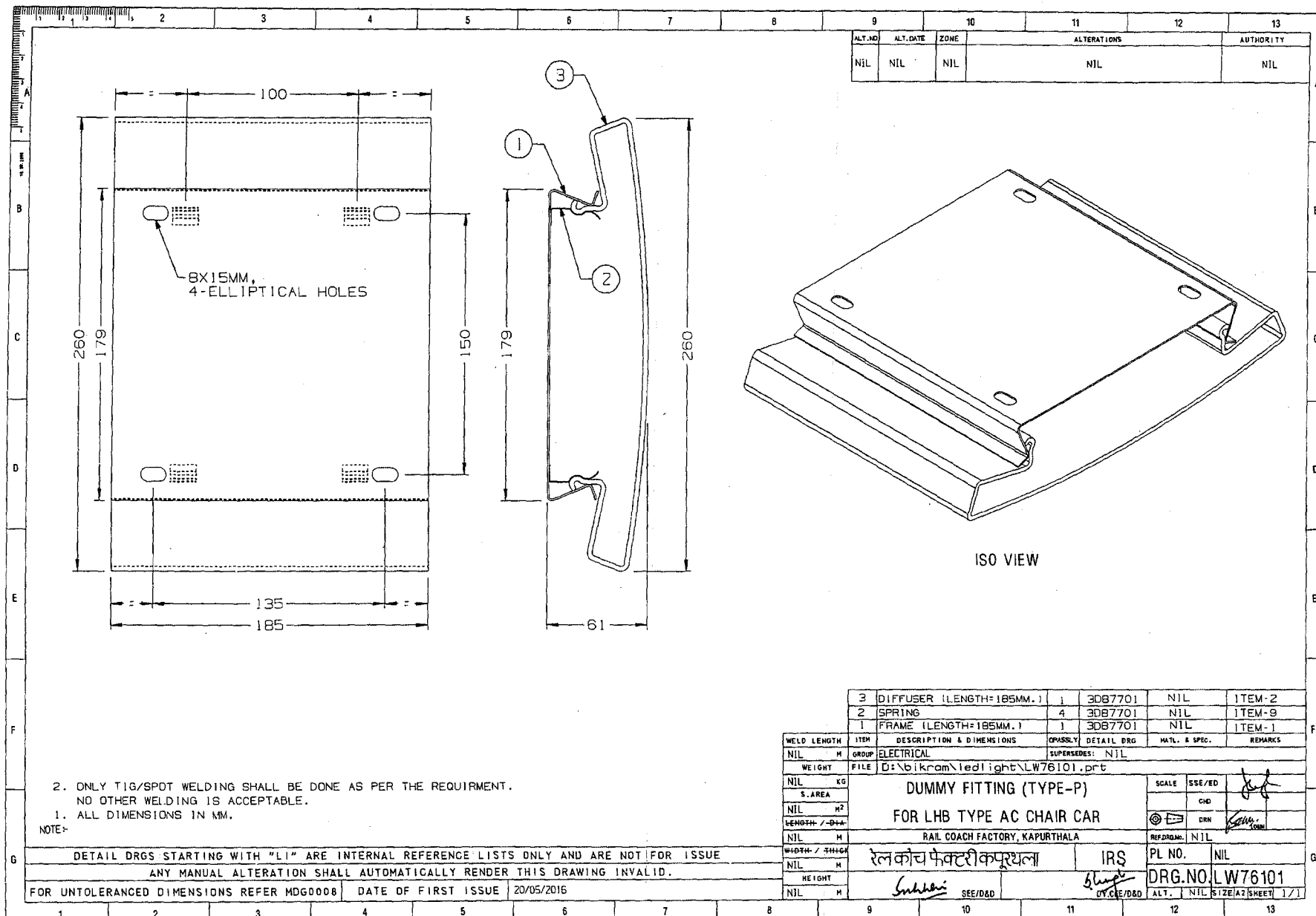
ASSEMBLY DRAWINGS			
20-05-2016	20-05-2016		
ALT.	DATE OF LATEST ALT.	DATE OF FIRST ISSUE	DY.CEE/D

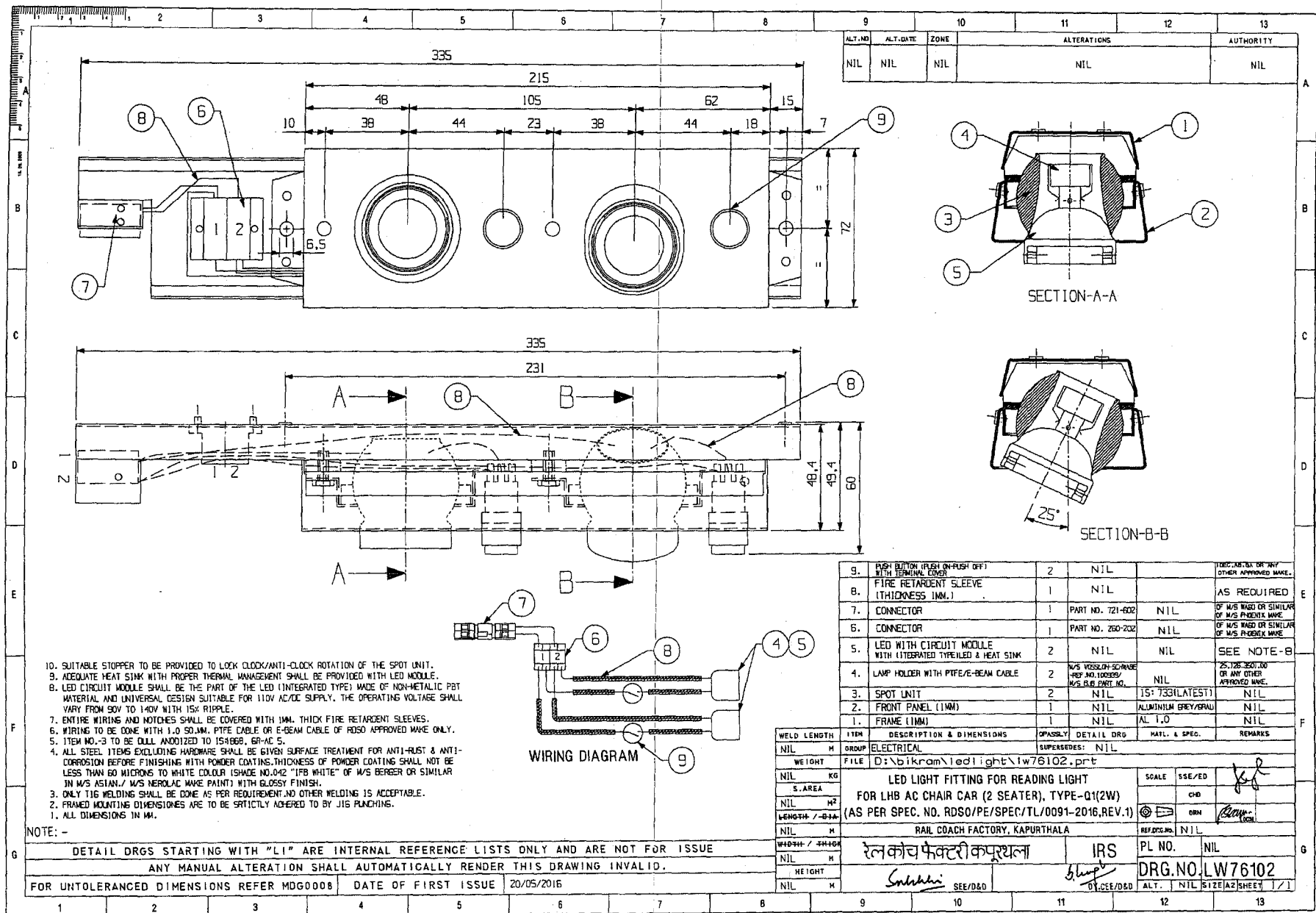
FORM IR A3 420x300

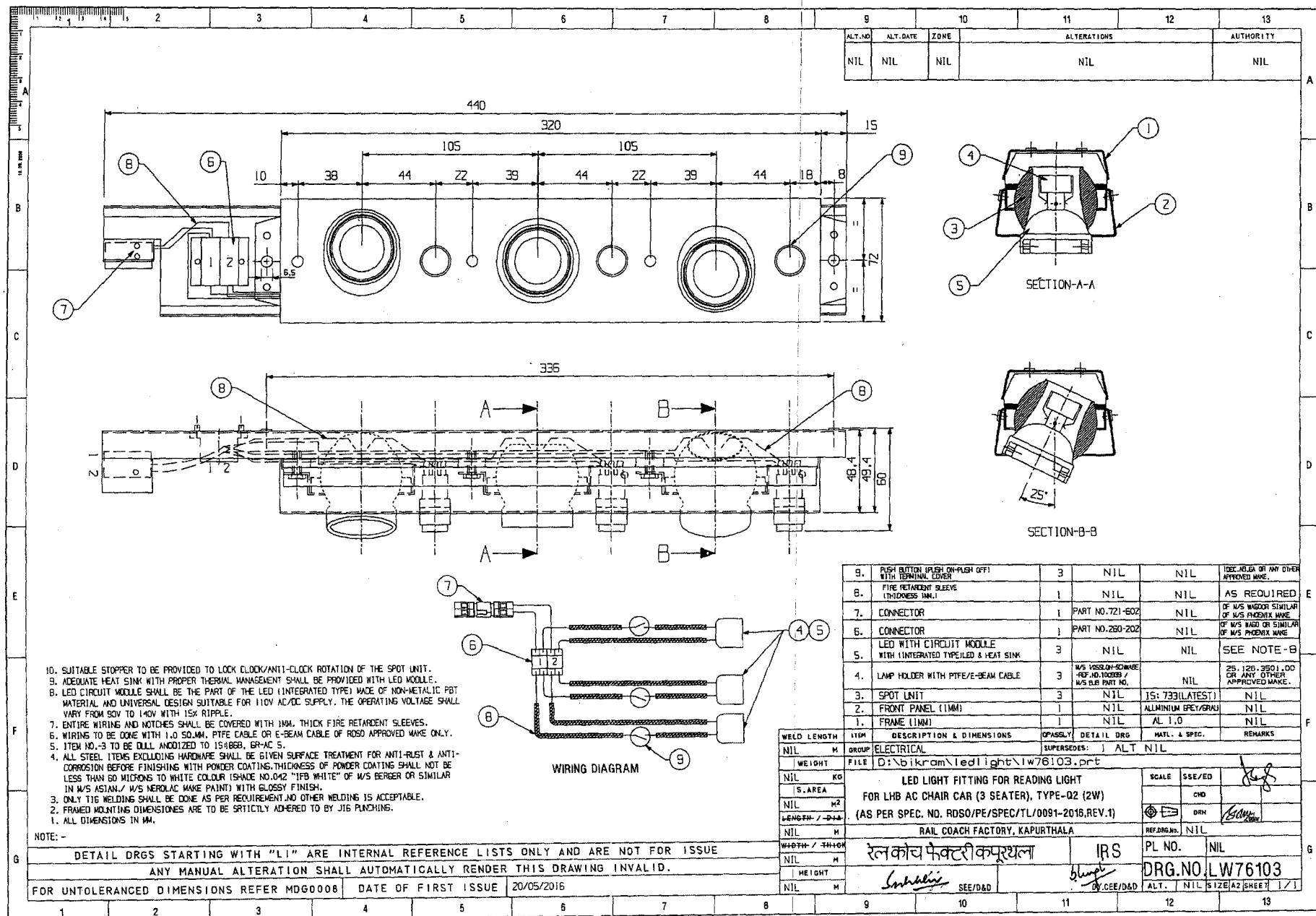




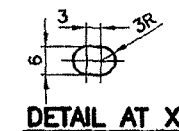
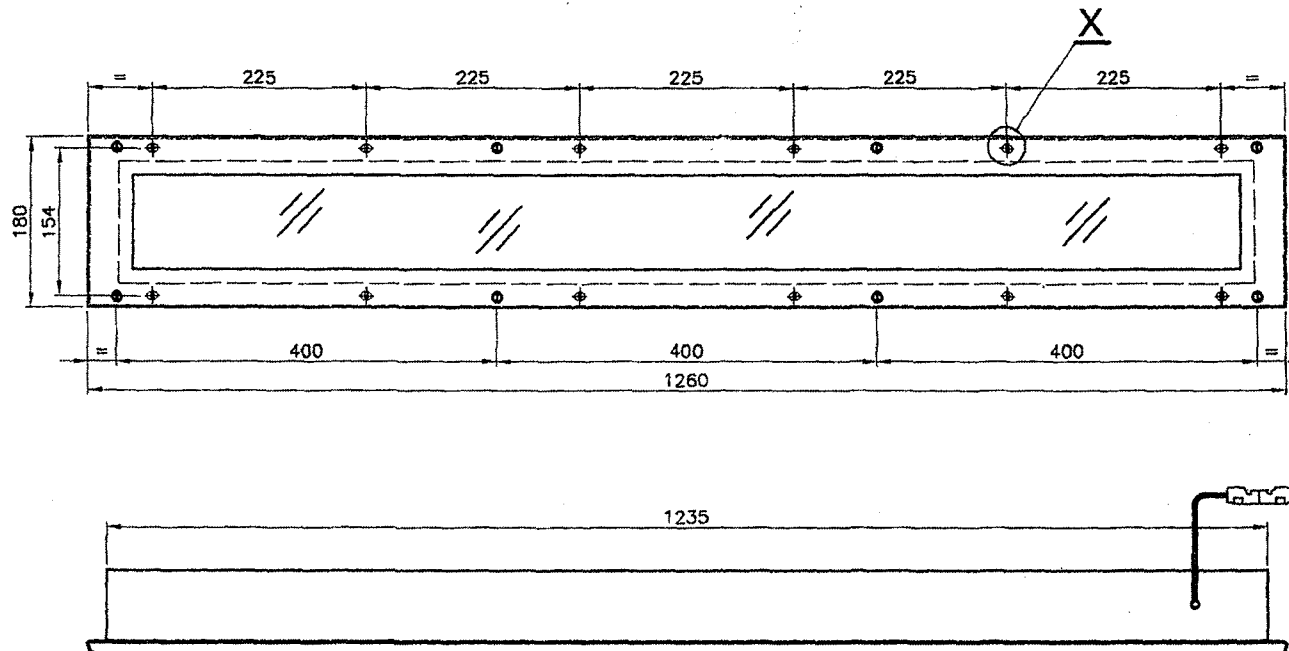
ANNEXURE-20







ICF/STD-7-6-047



				GROUP: 7-6		SUPERSEDED BY:	
				LED LIGHT FITTING, TYPE-S (18W) FOR CONV. AC CHAIR CAR, EMU & DEMU COACHES (AS PER SPEC. NO. RDSO/PE/SPEC/TL/0091-2016, REV.1)		SUPERSEDES:	
						SCALE	SSE/D
						1:5	CHD.
						ALT.	ALT.
				CAD FILE: ED-CAD\140 7-6 047---00.DWG		DRN	
				DATA CODE NO.		RATHARAJA	
				140		ALT	
				INDIAN RAILWAY STANDARDS		INTEGRAL COACH FACTORY CHENNAI - 38	
				SHEET 1 OF 1		ICF/STD-7-6-047	

ASSEMBLY DRAWINGS			
05-07-2016	3		
ALT.	DATE OF LATEST ALT.	DATE OF FIRST ISSUE	DY.CEE/D

