

**TENDER SPECIFICATION  
NO. CLW/ES/3/0124**

Alt.	E	F	G	H	I	J	K	L	M	N	O
Sheet	2			549	6						9

ANNEXURE: 26 Drqs of A<sub>2</sub> Size

TOTAL NO. OF SHEETS - 10 11

**SPECIFICATION**

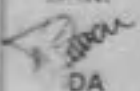
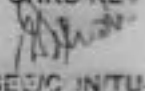
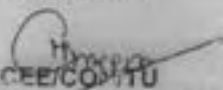





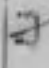
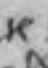
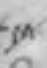
**FOR**

**SET OF CONNECTORS**

(WAG-9 (C<sub>6</sub>-C<sub>6</sub>) ELECTRIC LOCOMOTIVES)

**ISSUED BY:**

BY CHIEF ELECTRICAL ENGINEER/CON/TU-II  
CENTRE FOR DESIGN AND DEVELOPMENT  
CHITTARANJAN LOCOMOTIVE WORKS

SPECIFICATION FOR SET OF CONNECTORS	DRN.  DA	CHKD/REV  SEC/CON/TU-I	C & D CENTRE CHITTARANJAN LOCOMOTIVE WORKS WEST BENGAL, INDIA DATE: 22/9/99 NO: CLW/ES/3/0124								
	APPROVED BY  DY.CEE/CON/TU		ALT								

## ALTERATION RECORD SHEET

पृष्ठ  
Sheet  
2A

Amendment No.	Date of Amendment	Page No.	Alt.	Reason	Authority
12	19.11.07	6	J	ABB No. of item socket 22P/36 PIN 'N' (sl. no. 21) is corrected from HBTB 315/61 R0001 to HBTB 315/61 R0011	L 19.11.07
13	15.5.08	7,8	K	PLUG, 9PD-SUB, 51 PINS against SL. NO. 48 & CONTACT SOCKET SIZE 8/6 MM <sup>2</sup> have been re-introduced for shop requirement- vide letter No. SE/3P/ST-III/ELS-19/07/22 dated 8.5.08	L 15/5/08
14	01.10.09	5,6,7 8,9	L	Quantity/Loco Column & OEM/Gimote Part No. column is deleted from the table in the "Scope of supply" (Clause 4). Qty./Loco will be as Per Category book.	deputy 11/10/09
15	11.11.09	5,6	M	Description changed and ABB identification deleted for item no. 4 in the scope of supply. ABB identification no. of the sl. no. 18 and 20 has been changed for the inclusion of non metallic cable clamp and reduction ring if required with the connector as per shop requirement vide letter of ABE/ELC dated 13.10.09. and description changed.	deputy 11/11/09
16	17-08-2010		N	Cl.No.4 of Scope of supply item Sl.No.92 of page no.9 is re-introduced & one new item of scope of supply sl. no.97 of p-9 is included as per shop requirement, vide lt. of Dy.CEE/EL lt.No.ELC/T/21, dtd.22-07-2010.	deputy 18/8/10
17	13.06.16	9	O	New Clause No.6.5 added as a separate packing for a set of connectors for Panel and a set of connectors for Loco, except Panel as per latest category provision will be provided by the firm.	deputy 16.6.16

SPECIFICATION FOR  
SET OF CONNECTORL  
19.11.07  
उप.मु.वि.ज. (अभि.)  
DY. CEE.(D)वितरजन रेल इंजन कारखाना  
पश्चिम बंगाल, भारत  
CHITTARANJAN LOCOMOTIVE WORKS  
WEST BENGAL, INDIAक्रमांक/NO. CLW/ES/3/0/24/KK  
दिनांक/DATE: 19.11.07

2A

## ALTERATION RECORD SHEET


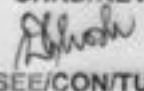
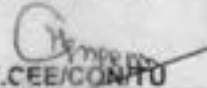
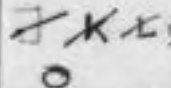
Amendment No.	Date of Amendment	Page No.	Alt.	Reason	Authority
1	20-03-99	2	A	Table of contents added.	
2	20-03-99	5	A	Scope of Supply is updated.	
3	20-03-99	7	A	Approval of Samples, Tests have been included.	
4	5-07-99	3	B	ABB Ident. No: for Sl.No: 8 to 13 changed as per Adtranz MR No: 433 Rev.A dt.25.1.99	
5	9-07-99	3	C	Scope of Supply is updated	
6	29-7-999	3	D	Scope of Supply is updated due to inclusion of SB1&2 connectors.	
7	22/05/2002	3	E	Gimota part number of sl.no.7 has been added (Cable clamp & reduction ring)	<i>Greene</i>
8	08/03/03	10	F	Fire retardant/self extinguishing clause included as note.	<i>Sharma</i> 12/3/00
9	12/11/03	5, 6, 8 and 9	G	Gimota Part no. corrected/ added in sl. no. 2, 3, 5, 6, 7, 11, 21, 22 and 32 in the scope of supply. ABB ID no. corrected in sl. no. 7 Qty./Loco changed in sl. no. 10 and 91 in the scope of supply. Description of item has been changed in sl. no. 22 in the scope of supply. Item sl. no. 86 in the scope of supply has been deleted.	<i>Me</i> 17/11/03
10	25-8-05	5 & 9	H	Qty./Loco corrected as per shop requirement vide Lr. no- ELE/T/16 dt. 28.8.05 & SSE/AJ-19/Connection dt. 10.6.05 and comparative demand sheet of SSE/Panel & SSE/Cable board -feeding section. Qty./Loco of WAG-9 & WAP-5 separately incorporated.	<i>Sharma</i>
11	11-09-06	5 & 7	I	Qty./Loco corrected as per SSE/EL's letter no ELE/T/21 dt. 25.08.06 & shop requirement for item no. ① & ④⑦ of the scope of supply.	<i>Sharma</i>

SPECIFICATION FOR SET OF CONNECTORS	DRN. <i>Sharma</i> SDA	CHKD/REV <i>Sharma</i> SEE/CON/TU-I	D & D CENTRE CHITTARANJAN LOCOMOTIVE WORKS WEST BENGAL, INDIA										
	APPROVED BY <i>Sharma</i> DY.CEE/CON/TU		ALT	E	F	G	H	I	J	K	L	M	N

**SPECIFICATION FOR SET OF CONNECTORS  
FOR  
WAG-9 (CO-CO) & WAP-5, 6000 HP, 3-PHASE, 25 kV, 50 Hz AC LOCOMOTIVE**

**TABLE OF CONTENTS**

1. SCOPE
2. SERVICE CONDITION
3. STANDARDS
4. SCOPE OF SUPPLY
5. SUBMISSION OF TENDER QUOTATION
6. APPROVAL OF SAMPLES
7. TESTS
8. TECHNICAL DOCUMENTS TO BE SUPPLIED BY THE SUPPLIER
9. NAME PLATE
10. QUANTITY/LOCO
11. QUALITY ASSURANCE
12. REFERENCE

<b>SPECIFICATION FOR SET OF CONNECTORS</b>	DRN.  SDA	CHKD/REV  SEE/CON/TU-I	D & D CENTRE CHITTARANJAN LOCOMOTIVE WORKS WEST BENGAL, INDIA							
	DATE: 29/9/99 NO: CLW/ES/3/0124									
	APPROVED BY  DY.CEE/CON/TU			ALT	E	F	G	H	I	

1. SCOPE :-

This specification covers the manufacture and supplies of Set of Connectors of WAG-9 (Co-Co), 6000 HP, 25 KV, 50 Hz, AC locomotive.

2. SERVICE CONDITIONS :-

Climatic and Environmental Condition:

Maximum Atmospheric Temperature : + 70°C (in Sun) & + 50°C (in shade)

Ambient Temperature (operating) : - 20...+70°C

Ambient Temperature (Storage) : -30...+80°C

Normal Humidity : 60%

Maximum Humidity : 100% saturation during rainy season.

Altitude : 160 m.a.s.l

Rail Fall should : Very heavy in certain areas. The equipment

be designed in such a way as to withstand its running at 10 Km/hr. in flood water level of 102 mm above rail level.

Coastal Areas are : Extremely dusty and desert terrain in certain areas.

Vibration : The equipment sub-system and their mounting arrangement will be designed to withstand vibration and shock encountered in service as specified in correspondence unless otherwise prescribed.

3. STANDARDS :

The standard should be as per IEC 60130, 60320, 60309, DIN 41612, MIL C/5015, VG 95234 for Circular Connectors and other relevant India/International Standards as and when applicable.

The tenderer should quote separately for Circular connectors, SUB-D connectors, Contact Pins, Contact sockets. Railways shall have the right to exercise the option to place orders separately for Circular connectors and SUB-D connectors. The tenderer should quote and supply the relevant accessories to each type of Connectors also.

4. SCOPE OF SUPPLY :

SPECIFICATION FOR SET OF CONNECTORS	DRN. <i>[Signature]</i> SDA	CHKD/REV <i>[Signature]</i> SEE/CON/TU-I	D & D CENTRE CHITTARANJAN LOCOMOTIVE WORKS WEST BENGAL, INDIA DATE: 29/9/99 NO: CLW/ES/3/0124					
	APPROVED BY <i>[Signature]</i> DY.SEE/CON/TU		ALT	E	F	G	H	I



SL. NO.	DESCRIPTION	ABB IDENTIFICATION NO	OEM/Gimota Part No: <i>Deleted</i>	CLV Ass. DRG No.	REQ. QTY/ LOCO <i>Deleted</i>
CIRCULAR CONNECTORS					WAG-9 MAPS
1	PLUG, INSULATED 0.5X2.8	3EHN424077P0001	504366		<del>4</del> 1
2	Plug size 22/19 pole LITTON	3EHP 431611 R0001	<del>8060-22-14SN-203</del> <del>SCB06C-22-14SN-203</del>		<del>NIL-2</del> NIL
3	Plug size 28/37 pole LITTON	3EHP 431611 R0002	<del>8060-28-21SN-283</del> <del>SCB06C-28-21SN-283</del>		<del>NIL-2</del> NIL
4	PLUG SIZE 32/31 POLES <i>With non metallic cable clamp</i>	3EHP330325R0001 <i>As per old Gimota Part no except Surface Plating</i>	SCB06-32-31SNC-LIC		<del>2</del> 2
5	PLUG, SIZE 22/19POLE/ LITTON	3EHP431609R0001	<del>506-22-14-PNG-LIC-110</del> <del>350349KRED-RING</del> <del>GR32/22/10-350349K-323</del>	51	<del>4</del> 4
6	PLUG, SIZE 28/37POLE/ LITTON	3EHP431609R0002	<del>506-28-21-PNG-LIC-110</del> <del>350349KRED-RING</del> <del>GR32/28/10-350349K-323</del>		<del>1</del> 1
7	SOCKET 1P/24 PIN 'N'	3EHW470072P0001 <i>3EHW470071P0001</i>	<del>GIMCVB02-24-4P-LIC</del> <del>10350349KRED-RING-110</del> <del>GR-24/32/10-350349K-323</del>	2	<del>8</del> 8
8	PLUG 4P BU 'N' IR CA / CONNECTOR	3EHW470084R0001	<del>GIMCV306-24-49-LIC-110</del> <del>350349KREDRING</del> <del>GR24/32/10-350349K-323</del>	53	<del>8</del> 8
9	SET OF COMPLETE SOCKET / SOCKET 5P / 318 PIN 'N'	HBT315075R0011	SCB00C-1E-11PN	40	<del>NIL-25</del> NIL
10	SET OF COMPLETE SOCKET / SOCKET 5P / 318 PIN 'N' STR	HBT315075R0031	SCB00C-1E-11PN-183		<del>2</del> 2
11	SET OF COMPLETE PLUG / PLUG ASSEMBLY (KIT)	HBT315075R0011	<del>SCB00C-1E-11PN-183</del> <del>SCB00C-1E-11PN-183</del>		<del>10</del> 10
12	1-PLUG 31P/S32 BUSHING	HBT315088R0031	SCB03C-32-31SN-243		<del>NIL-2</del> NIL
13	SET OF COMPLETE PLUG / PLUG P1/24 SOCKET 'N' INDOOR	HBTB315110R0011	<del>SCB06-24-07 SNC-LIC-110</del> <del>350349K-323/10</del> <del>350349KRED-RING</del> <del>GR32/24</del>		<del>4</del> 4
14	SET OF COMPLETE PLUG / PLUG 13P/32 SKT 'N' INDOOR/ with Cable Clamp	HBTB315111R0011	<del>SCB06-32-013-SNC-LIC</del> <del>/40-350349K-323</del>	35	<del>12</del> 12
15	SET OF COMPLETE PLUG / PLUG 22P / 36 SKT 'N' INDOOR	HBTB315112R0011	<del>SCB06-36-22-SNC-LIC-110</del> <del>350349K-403/10</del> <del>350349KRED-RING</del> <del>GR40/36</del>	39	<del>3</del> 3
16	ST.35P/40 BU 'N' IR KABELH/ PLUG 25P/40	HBTB315113R0011	<del>SCB06-40-35-SNC-LIC-110</del> <del>350349K-403</del>	3	<del>31</del> 31

SPECIFICATION FOR  SET OF CONNECTORS	DRN. <i>[Signature]</i> SDA	CHKD/REV <i>[Signature]</i> SEE/CON/TU-I	D & D CENTRE CHITTARANJAN LOCOMOTIVE WORKS WEST BENGAL, INDIA				
	APPROVED BY <i>[Signature]</i> DY.CEE/CON/TU		DATE: 29/9/09 NO: CLW/ES/3/0124				
	ALT	E	F	G	H	I	<i>[Signature]</i>

4972700/2026/O/O DY.CEE/D-II

Column deletes

Column deletes

	SRIT N INDOOR			Drq.No	Qty/Loco	WAG-9 P-5
17	ST.61P/40 BU"N"IR KABELH / PLUG 61P/40 SKT 'N' INDOOR	HBTB315157R0011	SCB06-40-63SNC L/C 10- 350349K-403-	4	9-12	9
(M) 18	SOCKET 7P/24 PIN "N" with cable clamp & ret ring	HBTB315158R0004 HBTB 315158R0011	6CB00C-24-07PN-	1	4-10	4
19	SET OF COMPLETE SOCKET / SOCKET 13P/32 PIN 'N' INDOOR	HBTB315159R0011	SCB00G-32-013PN/10- 350349K-323-	5	8-12	8
(M) 20	SET OF COMPLETE SOCKET / SOCKET 31P/31 PIN 'N' with cable clamp	HBTB315160R0001 HBTB 315160R0011	SCB00G-32-31PN-	6	2	2
(J) 21	SOCKET 22P/36 PIN"N"	HBTB315161R0007 HBTB 315161R0011	SCB00C-36-22PN/10- 350349K-403/10-350349 K-36-22PN-OR 40/26		2-38	3
(G) 22	SOCKET 35P/40 PIN 'N' IND.	HBTB315162R0011	SCB00C-40-36PN/10- 350349K-403	36	20-60	20
23	SET OF COMPLETE SOCKET / SOCKET 61P/40 PIN 'N' INDOOR	HBTB315163R0011	SCB00G-40-63PN/ 10- 350349K-403-	38	10-40	10
24	SET OF COMPLETE PLUG / PLUG 4P/40 SOCKET 'N' INDOOR	HBTB315176R0112	SCBS06-40A-4SNC L/C /10-37267-CG-40SP1/10- 350349-403/4X 10-903- 252G10-	11	4	4
25	SET OF COMPLETE PLUG / PLUG 4P/40 SOCKET 'N' INDOOR	HBTB315176R0113	SCBS06-40A-4SNC L/C /10-37267-CG-40SP1/10- 350349-403/4X 10-903-0- 352G10-	12	2-1	2
26	SET OF COMPLETE PLUG / PLUG 4P/40 SOCKET 'N' INDOOR	HBTB315176R0114	SCBS06-40A-4SNC L/C /10-37267-CG-40SP1/10- 350349-403/4X 10-903-0- 502G10-	13	8	6
27	SET OF COMPLETE PLUG / L-PLUG 4P/40 SOCKET 'N' INDOOR	HBTB315176R0211	SCBS06-40A-4SNC L/C /10-37268-CG-40RG3/10- 350349-403/4X 10-903-0- 162G10	14	1	1
28	SET OF COMPLETE PLUG / L- PLUG 4P/40 SOCKET 'N' INDOOR	HBTB315176R0213	SCBS06-40A-4SNC L/C /10-37268-CG-40RG3/10- 350349-403/4X 10-903-0- 352G10-	15	1	1
29	SOCKET 4P/40 PIN "N"	HBTB315177R0001	SCBS00C-40A-4PN	47	7-8	7
30	SOCKET 4P/40 PIN "N" IND	HBTB315177R0111			1-5	1
31	SOCKET 4P/40 PIN "N" IND	HBTB315177R0113			1-5	1
(D) 32	SET OF COMPLETE PLUG / L-PLUG 13P PIN 'N' OUTDOOR	HBTB315205R0111	SCB06-32-013SNCAL/C /10-37267CG32GG3 /A222001-8-02/2	52	NIL-4	NIL
33	SOCKET 13P PIN "N" OUTDOOR	HBTB315305R0111	SCB00C-32-013PN/ 10- 37267CG32GG3/A222001- 8-02/2		NIL-1	NIL

SPECIFICATION FOR  SET OF CONNECTORS	DRN. <i>[Signature]</i> SDA	CHKD/REV <i>[Signature]</i> SEE/CON/TU-I	D & D CENTRE CHITTARANJAN LOCOMOTIVE WORKS WEST BENGAL, INDIA						
			DATE: 29/9/99 NO: CLW/ES/3/0124						
	APPROVED BY <i>[Signature]</i> DY.CEE/CON/TU		ALT	E	F	G	H	I	<i>[Signature]</i>

34	SET OF COMPLETE SOCKET / SOCKET 13P PIN'N' OUTDOOR	HBTB315305R0311	SCB00C-32-013PN/ 10-37268GG32G3/ BF1G-U437G-1		12	1	(H)
35	CABLE CONNECTION / HP-9P-SG-SG-17S-21-13.0 M	HBTB315385R0172	550340		2	2	
36	SOCKET / PLUG, 5 CRIMP SOCKET S16	HBTB415399P0012	KPSE 120061-23	57	8	8	
37	PLUG 9 POLES SZ 13-13A/AMP/0-182645-1	HETT401293P0001	182645-1		6	6	(H)
38	PROTECTIVE CAP / CABLE CLIP (Accessories to item no 40)	HETT401293P0032			6	6	(H)
39	ANDERSON CONTACTS 120A	X1319	*1319		8	8	
40	ANDERSON PLUG PP 120A	X1321BLAU	*1321BLAU		4	4	
41	ANDERSON PLUG PP 120A	X1321G3ROT	*1321G3ROT		4	4	
<b>SUB D PLUGS / CONNECTORS</b>							
42	SUB-D PLUG SET / CONNECTOR SPEEDOMETER CONNECTOR SUB-SET	3EHP590025R0519	30-005806		1	1	
43	CONNECTOR SPEEDOMETER	3EHP590025R0530	30-007617		NIL 2	NIL	(H)
44	ST. 9P D-SUB GR1 / CONNECTOR	HBTB316240R0009	TRACHSTS09C09S1		55 150	55	(H)
45	CONNECTOR / PLUG, 15P D-SUB, SIZE-2	HBTB316240R0015			26 50	26	(H)
46	CONNECTOR / PLUG, 17P D-SUB, SIZE-3	HBTB316240R0017			4 8	4	(H)
47	Sub D Plug 25P D-SUB,	HBTB316240R0025	TRACHST325C12BL1		NIL 25 7	NIL 7	(H)
48	PLUG, 9P D-SUB, S1 PINS	HBTB316240R0091	TRACHSTP09C09S1		NIL 30 02 NOS	NIL 30 02 NOS	(H)
49	SOCKET 9P D-SUB SIZE 1	HBTB316241R0009	TRACHDOP09C09S	20	10 8	12	(H)
50	PLUG DO 5P/ 14	HBTB415399P0022		55	22 20	22	(H)
<b>CONTACT PINS</b>							
51	CONTACT PIN, SIZE 8/2.5 SQ.MM	3EHW470321P1025	10-40794-22 AU	41	24	24	
52	CONTACT PIN, SIZE 8/6 SQ.MM	3EHW470321P1060	10-40794-38 AU	43	16	16	
53	CONTACT PIN, SIZE 8/10 SQ.MM	3EHW470321P1100	10-40794-50 AU	45	8 50	8	(H)
54	CONTACT PIN 12/0.5	HBT415298P0001	10-40561-11AU	23	113 225	113	(H)
55	CONTACT PIN 12/1.0	HBT415298P0003	10-40561-15AU	24	131 275	131	(H)
56	CONTACT PIN 12/1.5	HBT415298P0005	10-40561-18AU	26	535 000	535	(H)
57	CONTACT PIN 12/2.5	HBT415298P0007	10-40561-22AU	28	230 250	230	(H)
58	CONTACT PIN 12/4.0	HBT415298P0009	10-40561-30AU	30	46 40	46	(H)
59	CONTACT PIN 12/6.0	HBT415298P0011	10-40561-38AU	31	40 60	40	(H)
60	CONTACT PIN GR 16* 0.5	HBT415299P0001	10-40567-05 AU		100 396	100	(H)

**SPECIFICATION  
FOR  
SET OF  
CONNECTORS**

DRN.  
*[Signature]*  
SDA

CHKD/REV  
*[Signature]*  
SEE/CON/TU-I

**D & D CENTRE  
CHITTARANJAN LOCOMOTIVE WORKS  
WEST BENGAL, INDIA**

DATE: 29/9/99  
NO: CLW/ES/3/0124

APPROVED BY

*[Signature]*  
DY.CEE/CON/TU

ALT

E

F

G

H

I

*[Signature]* KKM/XO



				Dry No.	WAG-3	P-5
	MM2					
61	CONTACT PIN 16/1.0	HBT415299P0005	10-40557-AU	17	12-225	12
62	CONTACT PIN 16/1.5	HBT415299P0007	10-40557-20.1 AU	19	430-850	430
63	CONTACT PIN GR 16* 2.0 MM2 (AWG 14)	HBT415299P0009	10-40557-20 AU		185	185
64	CONTACT PIN MALE GR16 0.5-1.0 mm2	HBTB415399P0001	430-8560-004		100	100
65	DUMMY CONTACT MALE GR16 BL/ DUMMY PLUG SIZE 16 BL	HBTB415399P0005	225-1011-00		43	43
66	CONTACT PIN GRO/16 SQ.MM	HBTB416435P0001	10-660-0-162G10	50A	4-18	4
67	CONTACT PIN GRO/25 SQ.MM	HBTB416435P0002	10-660-0-252G10	50A	18	18
68	CONTACT PIN GRO/35 SQ.MM	HBTB416435P0003	10-660-0-352G10	50A	4-18	4
69	CONTACT PIN GRO/50 SQ.MM	HBTB416435P0004	10-660-0-502G10	50B	12	12
70	CONTACT PIN AWG 24-20 Sub-D	HESG455639P1200	5-166053-4	49	NIL	NIL
71	CONT. PIN 0.24-0.62/24-20	X1.8076.005/01	1.8076.005/01		25-2	25
<b>CONTACT SOCKETS</b>						
	CONTACT SOCKET	3EHP430759P0002	10-40556-20-1 AU gesenkt. 90 Grad	56	400	455
73	CONTACT SOCKET SIZE 8/2.5 MM2	3EHW470321P2025	10-40795-22 AU	42	65	65
74	CONTACT SOCKET SIZE 8/ 6 MM2	3EHW470321P2060	10-40795-38 AU	44	NIL	NIL
75	CONTACT SOCKET SIZE 8/10 MM2	3EHW470321P2100	10-40793-50 AU	46	50	NIL
76	CONTACT SOCKET	HBT415176P0003			NIL	NIL
77	CONTACT SOCKET	HBT415176P0004			NIL	NIL
78	CONTACT SOCKET 12/1.0	HBT415298P0004	10-40560-15 AU	25	126-125	126
79	CONTACT SOCKET 12/1.5	HBT415298P0006	10-40560-18 AU	27	20-35	70
80	CONTACT SOCKET 12/2.5	HBT415298P0008	10-40560-22 AU	29	20-8000	200
81	CONTACT SOCKET 12/ 6.0	HBT415298P0012	10-40560-38AU		14-20	14
82	CONTACT SOCKET 16/0.5	HBT415299P0002	10-40556-05 AU	16	60-400	60
83	CONTACT SOCKET 16/1.0	HBT415299P0006	10-40556 AU	18	88-320	88
84	CONTACT SOCKET 16/1.5	HBT415299P0008	10-40556-20-1 AU	20	250	250
85	CONTACT SOCKET 16/2/AWG14	HBT415299P0010	10-40556-20 AU		130-30	430
86	CONTACT SOCKET 16/0.5	HBTB415298P0012	10-40556-05 AU		14	NIL
87	CONTACT FEMALE GR16 / CONTACT SOCKET SIZE 16	HBTB415399P0002	031-8704-000		35	34
88	Contact socket S.O/35mm2	HBTB416434P0003	10-903-0-352G10		20	20
89	Contact socket S.O/50mm2	HBTB416434P0004	10-903-0-502G10		NIL	NIL
90	CONTACT SOCKET 2-3	HESG455509P0021			10-23	10

SPECIFICATION FOR

SET OF CONNECTORS

DRN.

SDA

CHKD/REV

SEE/CON/TU-I

D & D CENTRE  
CHITTARANJAN LOCOMOTIVE WORKS  
WEST BENGAL, INDIADATE: 29/9/99  
NO: CLW/ES/3/0124

APPROVED BY

DY.CEE/CON/TU

ALT

E

F

G

H

I

72700/2026/O/o DY.CEE/D-II				Column deleted	Column deleted (H)	
	MM2			Qty.No.	NAG-9	P-5
(G)	91	CONTACT SOCKET AWG24-20	HESG455638P0120	5-166051-4	48	<del>300</del> <del>600</del> 600
(N)	92	CONTACT SOCKET SUB-D	HESG455638P1200	(N) (Rainhooded)	NIL	NIL
	93	CONNECTOR SKT 0.23, 0.5	SE408197P0013	1-163088-0	48	66
ACCESSORIES						
	94	SOCKET BODY PA	3EHW470001P0001	925324-2	NIL	NIL
	95	ADAPTOR STR. SIZE 18	HBT415278P0001		1	1
	96	ADAPTOR NW17/SIZE18TR. SIZE 18	HBT415393P0437	BFIG-U437.1	8	12
(N)	97	Protection Boot.	HBTB-416397P0012	12/positions is included. (N)		

## 5. SUBMISSION OF TENDER QUOTATION

- 5.1 All tender documents including the quotation shall be submitted in duplicate including any correspondence till the contract is finalised.
- 5.2 The Tenderer shall give sufficient information to prove that his factory has adequate facilities and capacity to manufacture the Set of Connectors to meet fully the technical requirements of the specification and quality of materials and workmanship.
- 5.3 Quotation shall not be considered complete unless all information is furnished and are therefore liable to be rejected.
- 5.4 Detailed drawings of the Set of Connectors should be submitted for approval of purchaser.
- 5.5 Full Technical documents and drawings to be furnished by the Supplier as part of the contract.

## 6. APPROVAL OF SAMPLE :

- 6.1 The supplier shall make available at least two prototypes of the equipment proposed to be supplied by him for inspection and tests at his works and advice the Dy.Chief Electrical Engineer, (D & D), Chittaranjan and Controller of Stores, Calcutta as and when he is ready with the prototype and necessary testing and measuring apparatus and facilities for carrying out the tests.
- 6.2 After the above tests if it is considered necessary by the Dy.CEE/CON/TU's authorised representative to carry out any further tests or trials of the prototype at Chittaranjan, the supplier will arrange for the same by the quickest means.
- 6.3 The supplier shall not offer equipments of series production to the inspector authorized under the contract until the prototype has been finally approved. The supplier shall provide all facilities to the inspecting officer at his works, to inspect and test the equipment.

- 6.4 The Supplier should ensure that the Connectors are packed separately itemwise during delivery with the relevant ABB Identification Number labels.

6.5 Separate packing for "a set of connectors for Panel" and a set of connectors for "a set of connectors for Panel" as per latest category Provision will be provided by the Buyer.

SPECIFICATION FOR SET OF CONNECTORS	DRN. <i>Pran</i> SDA	CHKD/REV <i>Pran</i> SEE/CON/TU-I	D & D CENTRE CHITTARANJAN LOCOMOTIVE WORKS WEST BENGAL, INDIA					DATE: 29/9/99 NO: CLW/ES/3/0124					
	APPROVED BY <i>[Signature]</i> DY.CEE/CON/TU		ALT	E	F	G	H	I	J	K	L	M	N

7. TESTS :

Type test and routine test shall be carried out according to Relevant International/Indian Standards to be specified to the successful tenderer.

8. TECHNICAL DOCUMENTS TO BE SUPPLIED BY THE SUPPLIER :

- i) Type Test Reports : 10 Copies
- ii) Routine Test Reports along with each set : 4 Copies
- iii) Maintenance Manual : 20 Copies
- iv) Detailed drawings : 6 copies

9. NAME PLATE :

The tenderer shall fix name plate on the equipment including -

- i) Manufacturer's Name & Monogram/Brand
- ii) Range of electrical ratings in Watts.
- iii) Maximum Rated Voltage
- iv) Month & Year of Manufacture
- v) S/N of equipment.

10. QUANTITY/LOCO :

Quantity/Loco : As given in the table

11. QUALITY ASSURANCE : As per ISO 9000.12. REFERENCE :

This specification has the reference to the original manufacturer as follows :

M/S. GIMOTA AG  
CH-8954, GEROLDSWIL ZURICH

PH: 004117493010, FAX: 004117493010

The tenderer shall confirm that the equipments are as either used in 3 phase AC etc. locomotive manufactured by ABB for Indian Railways or similar.

13. Note :- The non-metallic part of Connector (Protection boot) must be of Inflammability class FH2-5 mm as defined in the IS: 11731 (Part-1) : 1986-Horizontal Specimen Method of Test for Solid Insulating Materials and class FV0 as per IS: 11731 (Part-2) : 1986-Vertical Test Method

SPECIFICATION FOR SET OF CONNECTORS	DRN. <i>[Signature]</i> SDA	CHKD/REV <i>[Signature]</i> SEE/CON/TU-I	D & D CENTRE CHITTARANJAN LOCOMOTIVE WORKS - WEST BENGAL, INDIA						
	DATE: 29/9/99 NO: CLW/ES/3/0124								
	APPROVED BY <i>[Signature]</i> DY.CEE/CON/TU			ALT	E	F	G	H	I

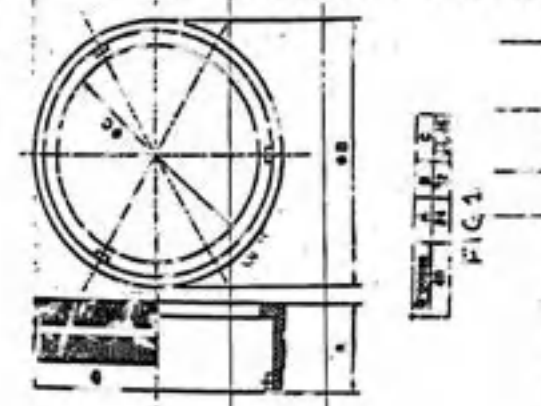
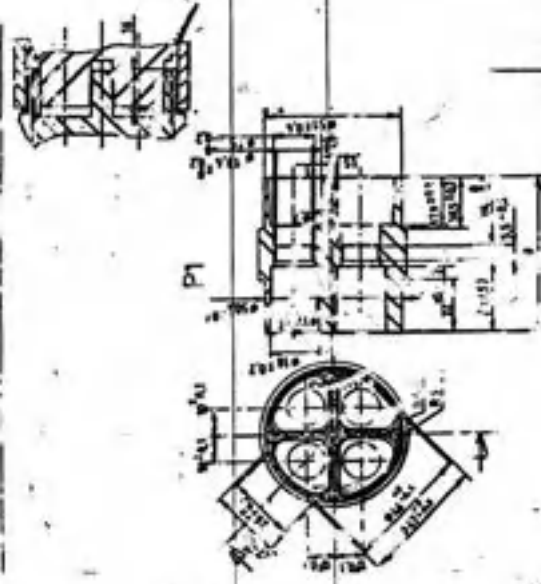
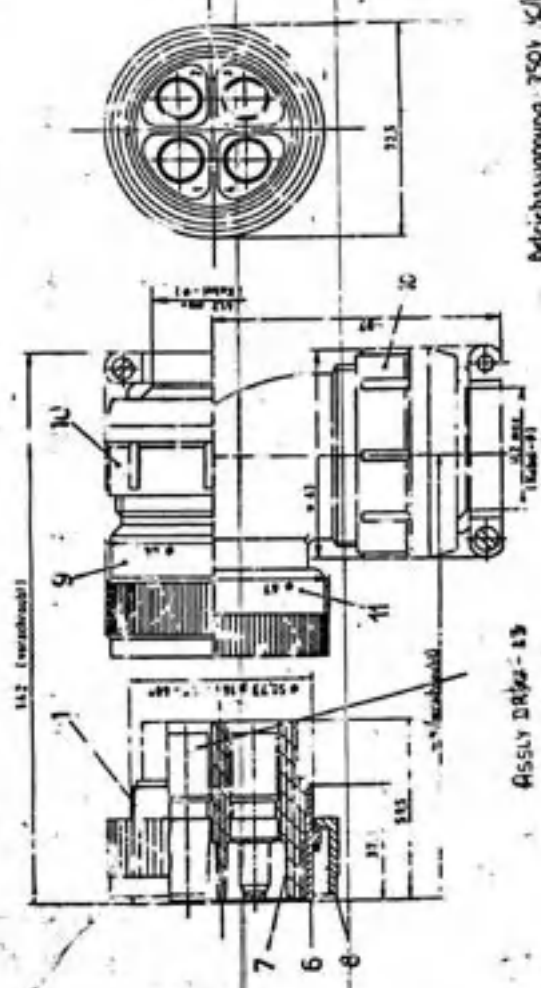


FIG 1

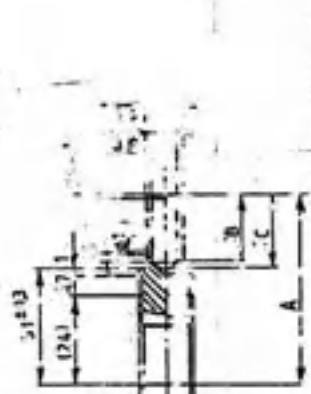


1 Pinze Stecker  
FIG 2



ASSEMBLY DRAWING - 13

Betriebsspannung 750V KIDC



KABEL QUERSCHNITT mm²	A	q	q <sub>02</sub>	q <sub>01</sub>	q <sub>03</sub>	q <sub>04</sub>	q <sub>05</sub>
50	53	20,5	22	11,2	14,6		

FIG 4



FIG 5

Größe	40	41	42	43	44	45	46	47	48	49	50	51	52	53	54	55	56	57	58	59	60	61	62	63	64	65

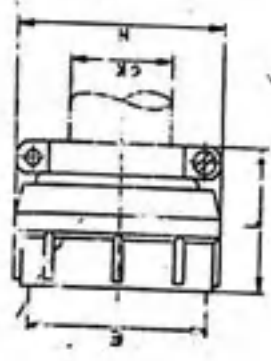
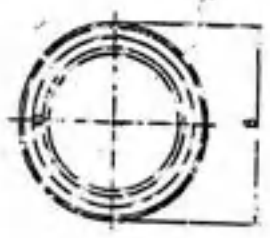


FIG 6

Größe	E	F	K	H	I
40	57,15	58,166	61,2 max.	63,5	64,6

FIG. 5

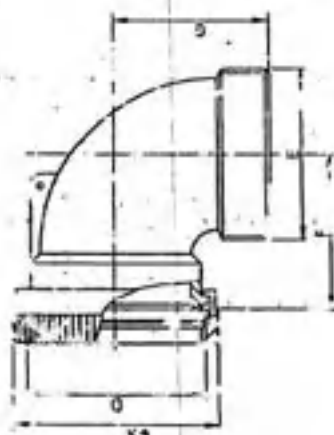


Größe	A	B	C
70	37-38	41-42	43-44

SPEC FOR SET OF CONNECTED

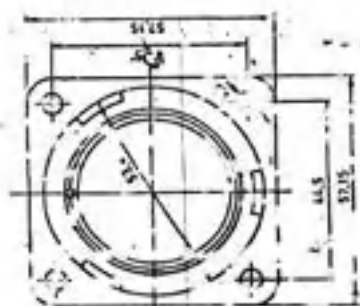
CLW/TE/21-X-101011





Größe	DA	D	E	F
32	56	61,7	62,5	63,5
40	72	77,7	78,5	79,5
50	92	97,7	98,5	99,5
65	118	123,7	124,5	125,5
80	142	147,7	148,5	149,5
100	178	183,7	184,5	185,5
125	212	217,7	218,5	219,5
150	250	255,7	256,5	257,5
200	318	323,7	324,5	325,5
250	392	397,7	398,5	399,5
300	472	477,7	478,5	479,5
350	552	557,7	558,5	559,5
400	632	637,7	638,5	639,5
450	712	717,7	718,5	719,5
500	792	797,7	798,5	799,5
550	872	877,7	878,5	879,5
600	952	957,7	958,5	959,5
650	1032	1037,7	1038,5	1039,5
700	1112	1117,7	1118,5	1119,5
750	1192	1197,7	1198,5	1199,5
800	1272	1277,7	1278,5	1279,5
850	1352	1357,7	1358,5	1359,5
900	1432	1437,7	1438,5	1439,5
950	1512	1517,7	1518,5	1519,5
1000	1592	1597,7	1598,5	1599,5

FIG 1



Größe	DA	D	E	F
32	56	61,7	62,5	63,5
40	72	77,7	78,5	79,5
50	92	97,7	98,5	99,5
65	118	123,7	124,5	125,5
80	142	147,7	148,5	149,5
100	178	183,7	184,5	185,5
125	212	217,7	218,5	219,5
150	250	255,7	256,5	257,5
200	318	323,7	324,5	325,5
250	392	397,7	398,5	399,5
300	472	477,7	478,5	479,5
350	552	557,7	558,5	559,5
400	632	637,7	638,5	639,5
450	712	717,7	718,5	719,5
500	792	797,7	798,5	799,5
550	872	877,7	878,5	879,5
600	952	957,7	958,5	959,5
650	1032	1037,7	1038,5	1039,5
700	1112	1117,7	1118,5	1119,5
750	1192	1197,7	1198,5	1199,5
800	1272	1277,7	1278,5	1279,5
850	1352	1357,7	1358,5	1359,5
900	1432	1437,7	1438,5	1439,5
950	1512	1517,7	1518,5	1519,5
1000	1592	1597,7	1598,5	1599,5

Reson. Disc. 7

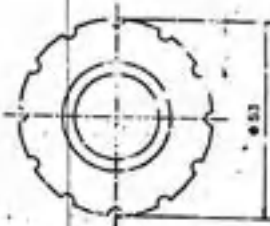
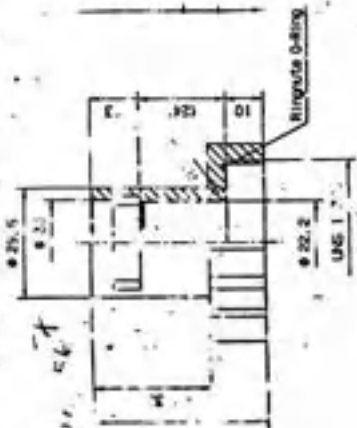
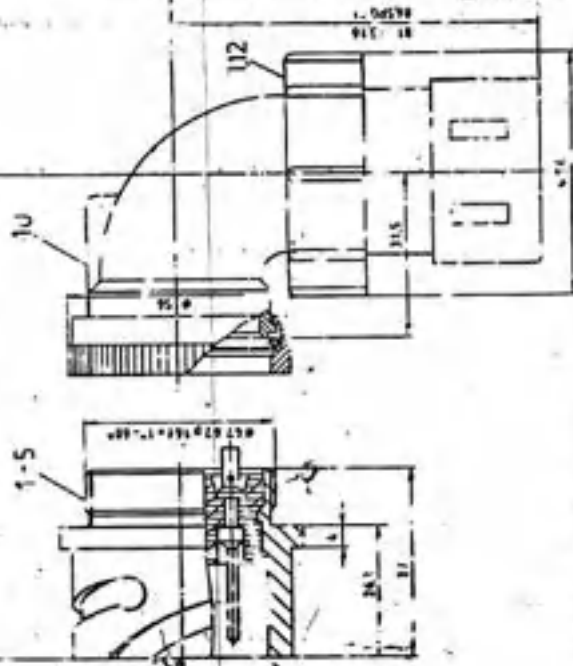


FIG 2

Bohrungen: 20/20-15  
0-40-  
Verarbeitung: Stück mit Bohrungen und Befestigungselementen  
IP 10 10 14

FIG 2

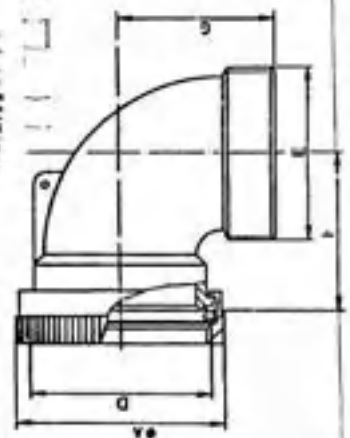




PAGE NO. 12

FORMAT NO. 045004

REVISION 1



Größe	A	B	C	D	E	F	G
50	57.3	61.5	68.8	72.8	146	38	51.5

Fig. 3



Größe	A	B	C
40	37.3	61.5	68.8, 72.8, 146

Fig. 5

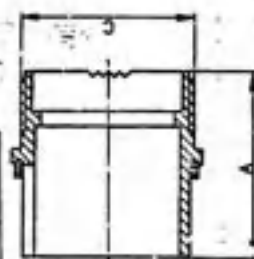
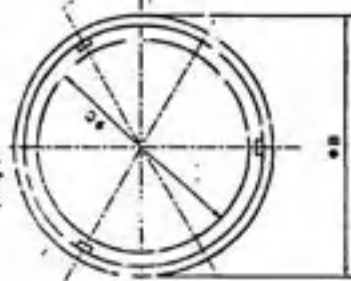
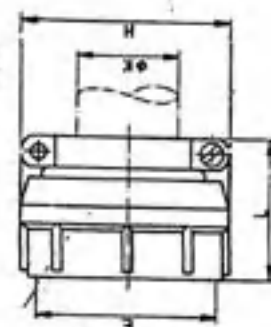


Fig. 2



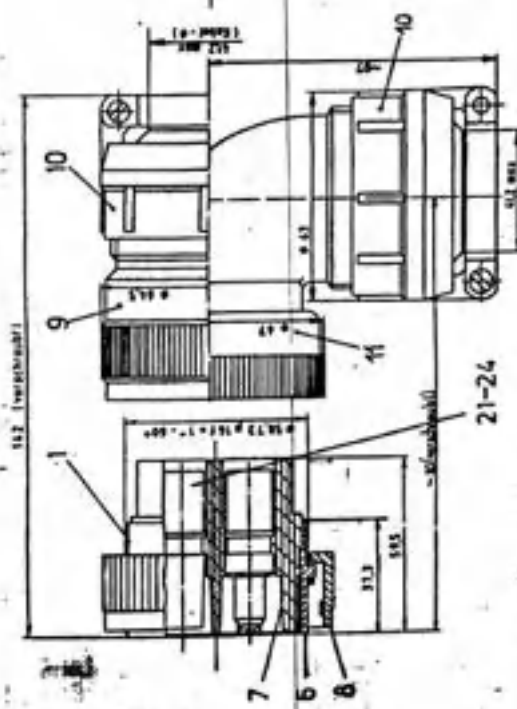
Größe	A	B	C
40	37.3	61.5	68.8, 72.8, 146

Fig. 4

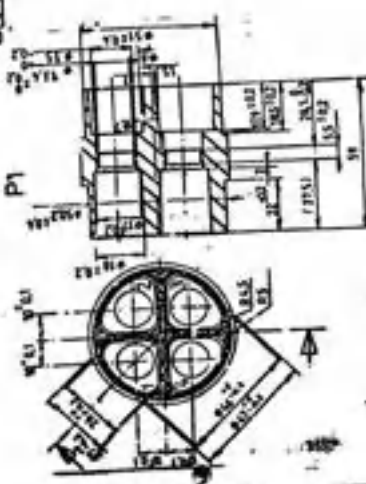
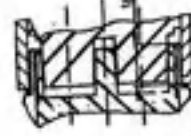


Größe	E	K	H	L
40	57.33	61.5	68.8, 72.8	51.5

Fig. 5



Assy. Des. 15



Matrize Stecker

Fig. 1

KADL	Pos	Querfläch	A	B	C	D	E	F	G
3	35	50	18	19	10	13	13	13	13

Fig. 3

Fig. 2

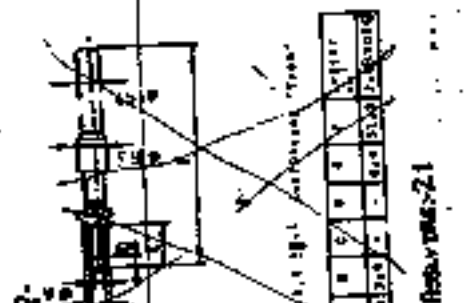
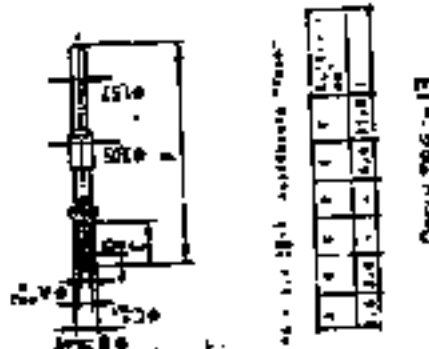
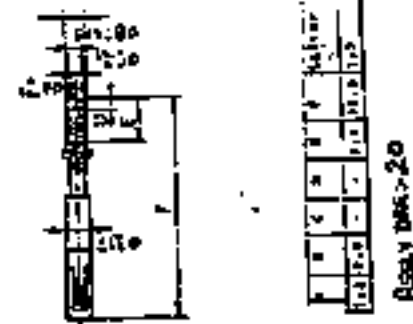
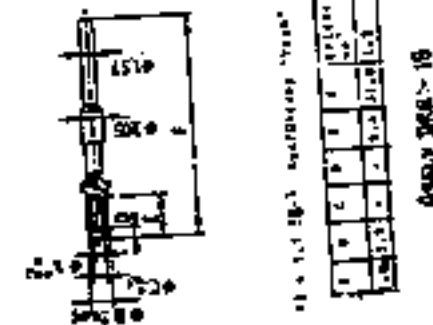
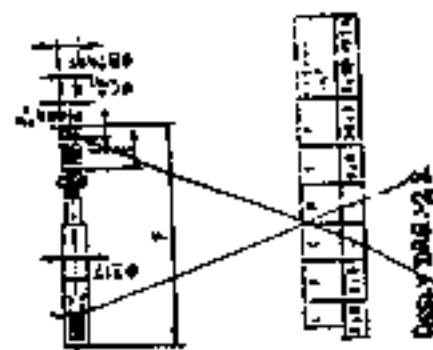
Fig. 5

Fig. 4

Fig. 1

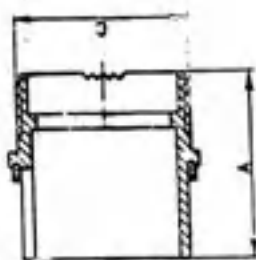
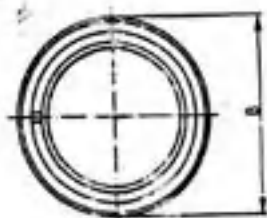
Fig. 5





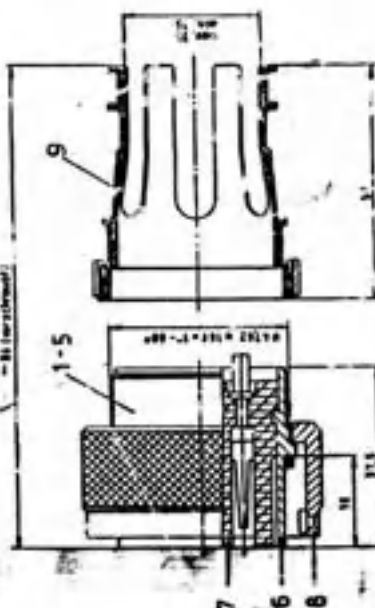
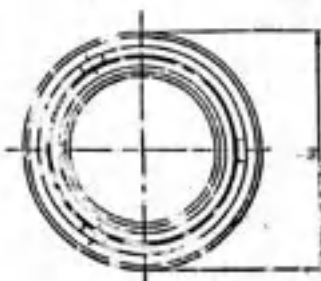
Contract No. 16/18/19/20/21/22/23/24/25/26/27/28/29/30/31/32/33/34/35/36/37/38/39/40/41/42/43/44/45/46/47/48/49/50/51/52/53/54/55/56/57/58/59/60/61/62/63/64/65/66/67/68/69/70/71/72/73/74/75/76/77/78/79/80/81/82/83/84/85/86/87/88/89/90/91/92/93/94/95/96/97/98/99/100/101/102/103/104/105/106/107/108/109/110/111/112/113/114/115/116/117/118/119/120/121/122/123/124/125/126/127/128/129/130/131/132/133/134/135/136/137/138/139/140/141/142/143/144/145/146/147/148/149/150/151/152/153/154/155/156/157/158/159/160/161/162/163/164/165/166/167/168/169/170/171/172/173/174/175/176/177/178/179/180/181/182/183/184/185/186/187/188/189/190/191/192/193/194/195/196/197/198/199/200/201/202/203/204/205/206/207/208/209/210/211/212/213/214/215/216/217/218/219/220/221/222/223/224/225/226/227/228/229/230/231/232/233/234/235/236/237/238/239/240/241/242/243/244/245/246/247/248/249/250/251/252/253/254/255/256/257/258/259/260/261/262/263/264/265/266/267/268/269/270/271/272/273/274/275/276/277/278/279/280/281/282/283/284/285/286/287/288/289/290/291/292/293/294/295/296/297/298/299/300/301/302/303/304/305/306/307/308/309/310/311/312/313/314/315/316/317/318/319/320/321/322/323/324/325/326/327/328/329/330/331/332/333/334/335/336/337/338/339/340/341/342/343/344/345/346/347/348/349/350/351/352/353/354/355/356/357/358/359/360/361/362/363/364/365/366/367/368/369/370/371/372/373/374/375/376/377/378/379/380/381/382/383/384/385/386/387/388/389/390/391/392/393/394/395/396/397/398/399/400/401/402/403/404/405/406/407/408/409/410/411/412/413/414/415/416/417/418/419/420/421/422/423/424/425/426/427/428/429/430/431/432/433/434/435/436/437/438/439/440/441/442/443/444/445/446/447/448/449/450/451/452/453/454/455/456/457/458/459/460/461/462/463/464/465/466/467/468/469/470/471/472/473/474/475/476/477/478/479/480/481/482/483/484/485/486/487/488/489/490/491/492/493/494/495/496/497/498/499/500/501/502/503/504/505/506/507/508/509/510/511/512/513/514/515/516/517/518/519/520/521/522/523/524/525/526/527/528/529/530/531/532/533/534/535/536/537/538/539/540/541/542/543/544/545/546/547/548/549/550/551/552/553/554/555/556/557/558/559/560/561/562/563/564/565/566/567/568/569/570/571/572/573/574/575/576/577/578/579/580/581/582/583/584/585/586/587/588/589/590/591/592/593/594/595/596/597/598/599/600/601/602/603/604/605/606/607/608/609/610/611/612/613/614/615/616/617/618/619/620/621/622/623/624/625/626/627/628/629/630/631/632/633/634/635/636/637/638/639/640/641/642/643/644/645/646/647/648/649/650/651/652/653/654/655/656/657/658/659/660/661/662/663/664/665/666/667/668/669/670/671/672/673/674/675/676/677/678/679/680/681/682/683/684/685/686/687/688/689/690/691/692/693/694/695/696/697/698/699/700/701/702/703/704/705/706/707/708/709/710/711/712/713/714/715/716/717/718/719/720/721/722/723/724/725/726/727/728/729/730/731/732/733/734/735/736/737/738/739/740/741/742/743/744/745/746/747/748/749/750/751/752/753/754/755/756/757/758/759/760/761/762/763/764/765/766/767/768/769/770/771/772/773/774/775/776/777/778/779/780/781/782/783/784/785/786/787/788/789/790/791/792/793/794/795/796/797/798/799/800/801/802/803/804/805/806/807/808/809/810/811/812/813/814/815/816/817/818/819/820/821/822/823/824/825/826/827/828/829/830/831/832/833/834/835/836/837/838/839/840/841/842/843/844/845/846/847/848/849/850/851/852/853/854/855/856/857/858/859/860/861/862/863/864/865/866/867/868/869/870/871/872/873/874/875/876/877/878/879/880/881/882/883/884/885/886/887/888/889/890/891/892/893/894/895/896/897/898/899/900/901/902/903/904/905/906/907/908/909/910/911/912/913/914/915/916/917/918/919/920/921/922/923/924/925/926/927/928/929/930/931/932/933/934/935/936/937/938/939/940/941/942/943/944/945/946/947/948/949/950/951/952/953/954/955/956/957/958/959/960/961/962/963/964/965/966/967/968/969/970/971/972/973/974/975/976/977/978/979/980/981/982/983/984/985/986/987/988/989/990/991/992/993/994/995/996/997/998/999/1000/1001/1002/1003/1004/1005/1006/1007/1008/1009/1010/1011/1012/1013/1014/1015/1016/1017/1018/1019/1020/1021/1022/1023/1024/1025/1026/1027/1028/1029/1030/1031/1032/1033/1034/1035/1036/1037/1038/1039/1040/1041/1042/1043/1044/1045/1046/1047/1048/1049/1050/1051/1052/1053/1054/1055/1056/1057/1058/1059/1060/1061/1062/1063/1064/1065/1066/1067/1068/1069/1070/1071/1072/1073/1074/1075/1076/1077/1078/1079/1080/1081/1082/1083/1084/1085/1086/1087/1088/1089/1090/1091/1092/1093/1094/1095/1096/1097/1098/1099/1100/1101/1102/1103/1104/1105/1106/1107/1108/1109/1110/1111/1112/1113/1114/1115/1116/1117/1118/1119/1120/1121/1122/1123/1124/1125/1126/1127/1128/1129/1130/1131/1132/1133/1134/1135/1136/1137/1138/1139/1140/1141/1142/1143/1144/1145/1146/1147/1148/1149/1150/1151/1152/1153/1154/1155/1156/1157/1158/1159/1160/1161/1162/1163/1164/1165/1166/1167/1168/1169/1170/1171/1172/1173/1174/1175/1176/1177/1178/1179/1180/1181/1182/1183/1184/1185/1186/1187/1188/1189/1190/1191/1192/1193/1194/1195/1196/1197/1198/1199/1200/1201/1202/1203/1204/1205/1206/1207/1208/1209/1210/1211/1212/1213/1214/1215/1216/1217/1218/1219/1220/1221/1222/1223/1224/1225/1226/1227/1228/1229/1230/1231/1232/1233/1234/1235/1236/1237/1238/1239/1240/1241/1242/1243/1244/1245/1246/1247/1248/1249/1250/1251/1252/1253/1254/1255/1256/1257/1258/1259/1260/1261/1262/1263/1264/1265/1266/1267/1268/1269/1270/1271/1272/1273/1274/1275/1276/1277/1278/1279/1280/1281/1282/1283/1284/1285/1286/1287/1288/1289/1290/1291/1292/1293/1294/1295/1296/1297/1298/1299/1300/1301/1302/1303/1304/1305/1306/1307/1308/1309/1310/1311/1312/1313/1314/1315/1316/1317/1318/1319/1320/1321/1322/1323/1324/1325/1326/1327/1328/1329/1330/1331/1332/1333/1334/1335/1336/1337/1338/1339/1340/1341/1342/1343/1344/1345/1346/1347/1348/1349/1350/1351/1352/1353/1354/1355/1356/1357/1358/1359/1360/1361/1362/1363/1364/1365/1366/1367/1368/1369/1370/1371/1372/1373/1374/1375/1376/1377/1378/1379/1380/1381/1382/1383/1384/1385/1386/1387/1388/1389/1390/1391/1392/1393/1394/1395/1396/1397/1398/1399/1400/1401/1402/1403/1404/1405/1406/1407/1408/1409/1410/1411/1412/1413/1414/1415/1416/1417/1418/1419/1420/1421/1422/1423/1424/1425/1426/1427/1428/1429/1430/1431/1432/1433/1434/1435/1436/1437/1438/1439/1440/1441/1442/1443/1444/1445/1446/1447/1448/1449/1450/1451/1452/1453/1454/1455/1456/1457/1458/1459/1460/1461/1462/1463/1464/1465/1466/1467/1468/1469/1470/1471/1472/1473/1474/1475/1476/1477/1478/1479/1480/1481/1482/1483/1484/1485/1486/1487/1488/1489/1490/1491/1492/1493/1494/1495/1496/1497/1498/1499/1500/1501/1502/1503/1504/1505/1506/1507/1508/1509/1510/1511/1512/1513/1514/1515/1516/1517/1518/1519/1520/1521/1522/1523/1524/1525/1526/1527/1528/1529/1530/1531/1532/1533/1534/1535/1536/1537/1538/1539/1540/1541/1542/1543/1544/1545/1546/1547/1548/1549/1550/1551/1552/1553/1554/1555/1556/1557/1558/1559/1560/1561/1562/1563/1564/1565/1566/1567/1568/1569/1570/1571/1572/1573/1574/1575/1576/1577/1578/1579/1580/1581/1582/1583/1584/1585/1586/1587/1588/1589/1590/1591/1592/1593/1594/1595/1596/1597/1598/1599/1600/1601/1602/1603/1604/1605/1606/1607/1608/1609/1610/1611/1612/1613/1614/1615/1616/1617/1618/1619/1620/1621/1622/1623/1624/1625/1626/1627/1628/1629/1630/1631/1632/1633/1634/1635/1636/1637/1638/1639/1640/1641/1642/1643/1644/1645/1646/1647/1648/1649/1650/1651/1652/1653/1654/1655/1656/1657/1658/1659/1660/1661/1662/1663/1664/1665/1666/1667/1668/1669/1670/1671/1672/1673/1674/1675/1676/1677/1678/1679/1680/1681/1682/1683/1684/1685/1686/1687/1688/1689/1690/1691/1692/1693/1694/1695/1696/1697/1698/1699/1700/1701/1702/1703/1704/1705/1706/1707/1708/1709/1710/1711/1712/1713/1714/1715/1716/1717/1718/1719/1720/1721/1722/1723/1724/1725/1726/1727/1728/1729/1730/1731/1732/1733/1734/1735/1736/1737/1738/1739/1740/1741/1742/1743/1744/1745/1746/1747/1748/1749/1750/1751/1752/1753/1754/1755/1756/1757/1758/1759/1760/1761/1762/1763/1764/1765/1766/1767/1768/1769/1770/1771/1772/1773/1774/1775/1776/1777/1778/1779/1780/1781/1782/1783/1784/1785/1786/1787/1788/1789/1790/1791/1792/1793/1794/1795/1796/1797/1798/1799/1800/1801/1802/1803/1804/1805/1806/1807/1808/1809/1810/1811/1812/1813/1814/1815/1816/1817/1818/1819/1820/1821/1822/1823/1824/1825/1826/1827/1828/1829/1830/1831/1832/1833/1834/1835/1836/1837/1838/1839/1840/1841/1842/1843/1844/1845/1846/1847/1848/1849/1850/1851/1852/1853/1854/1855/1856/1857/1858/1859/1860/1861/1862/1863/1864/1865/1866/1867/1868/1869/1870/1871/1872/1873/1874/1875/1876/1877/1878/1879/1880/1881/1882/1883/1884/1885/1886/1887/1888/1889/1890/1891/1892/1893/1894/1895/1896/1897/1898/1899/1900/1901/1902/1903/1904/1905/1906/1907/1908/1909/1910/1911/1912/1913/1914/1915/1916/1917/1918/1919/1920/1921/1922/1923/1924/1925/1926/1927/1928/1929/1930/1931/1932/1933/1934/1935/1936/1937/1938/1939/1940/1941/1942/1943/1944/1945/1946/1947/1948/1949/1950/1951/1952/1953/1954/1955/1956/1957/1958/1959/1960/1961/1962/1963/1964/1965/1966/1967/1968/1969/1970/1971/1972/1973/1974/1975/1976/1977/1978/1979/1980/1981/1982/1983/1984/1985/1986/1987/1988/1989/1990/1991/1992/1993/1994/1995/1996/1997/1998/1999/2000/2001/2002/2003/2004/2005/2006/2007/2008/2009/2010/2011/2012/2013/2014/2015/2016/2017/2018/2019/2020/2021/2022/2023/2024/2025/2026/2027/2028/2029/2030/2031/2032/2033/2034/2035/2036/2037/2038/2039/2040/2041/2042/2043/2044/2045/2046/2047/2048/2049/2050/2051/2052/2053/2054/2055/2056/2057/2058/2059/2060/2061/2062/2063/2064/2065/2066/2067/2068/2069/2070/2071/2072/2073/2074/2075/2076/2077/2078/2079/2080/2081/2082/2083/2084/2085/2086/2087/2088/2089/2090/2091/2092/2093/2094/2095/2096/2097/2098/2099/2100/2101/2102/2103/2104/2105/2106/2107/2108/2109/2110/2111/2112/2113/2114/2115/2116/2117/2118/2119/2120/2121/2122/2123/2124/2125/2126/2127/2128/2129/2130/2131/2132/2133/2134/2135/2136/2137/2138/2139/2140/2141/2142/2143/2144/2145/2146/2147/2148/2149/2150/2151/2152/2153/2154/2155/2156/2157/2158/2159/2160/2161/2162/2163/2164/2165/2166/2167/2168/2169/2170/2171/2172/2173/2174/2175/2176/2177/2178/2179/2180/2181/2182/2183/2184/2185/2186/2187/2188/2189/2190/2191
---

NO.	DATE	DESCRIPTION	BY	CHKD	APPD	REMARKS
1	12/15/50	CONTRACT Pm 12/15/50				
2	12/15/50	ASSLT DES. 31				
3	12/15/50	CONTRACT Pm 12/15/50				
4	12/15/50	ASSLT DES. 30				
5	12/15/50	CONTRACT SECRET 12/15/50				
6	12/15/50	ASSLT DES. 29				
7	12/15/50	CONTRACT Pm 12/15/50				
8	12/15/50	ASSLT DES. 28				
9	12/15/50	CONTRACT SECRET 12/15/50				
10	12/15/50	ASSLT DES. 27				
11	12/15/50	CONTRACT Pm 12/15/50				
12	12/15/50	ASSLT DES. 26				
13	12/15/50	CONTRACT SECRET 12/15/50				
14	12/15/50	ASSLT DES. 25				
15	12/15/50	CONTRACT Pm 12/15/50				
16	12/15/50	ASSLT DES. 24				
17	12/15/50	CONTRACT SECRET 12/15/50				
18	12/15/50	ASSLT DES. 23				
19	12/15/50	CONTRACT Pm 12/15/50				
20	12/15/50	ASSLT DES. 22				
21	12/15/50	CONTRACT SECRET 12/15/50				
22	12/15/50	ASSLT DES. 21				
23	12/15/50	CONTRACT Pm 12/15/50				
24	12/15/50	ASSLT DES. 20				
25	12/15/50	CONTRACT SECRET 12/15/50				
26	12/15/50	ASSLT DES. 19				
27	12/15/50	CONTRACT Pm 12/15/50				
28	12/15/50	ASSLT DES. 18				
29	12/15/50	CONTRACT SECRET 12/15/50				
30	12/15/50	ASSLT DES. 17				
31	12/15/50	CONTRACT Pm 12/15/50				
32	12/15/50	ASSLT DES. 16				
33	12/15/50	CONTRACT SECRET 12/15/50				
34	12/15/50	ASSLT DES. 15				
35	12/15/50	CONTRACT Pm 12/15/50				
36	12/15/50	ASSLT DES. 14				
37	12/15/50	CONTRACT SECRET 12/15/50				
38	12/15/50	ASSLT DES. 13				
39	12/15/50	CONTRACT Pm 12/15/50				
40	12/15/50	ASSLT DES. 12				
41	12/15/50	CONTRACT SECRET 12/15/50				
42	12/15/50	ASSLT DES. 11				
43	12/15/50	CONTRACT Pm 12/15/50				
44	12/15/50	ASSLT DES. 10				
45	12/15/50	CONTRACT SECRET 12/15/50				
46	12/15/50	ASSLT DES. 9				
47	12/15/50	CONTRACT Pm 12/15/50				
48	12/15/50	ASSLT DES. 8				
49	12/15/50	CONTRACT SECRET 12/15/50				
50	12/15/50	ASSLT DES. 7				
51	12/15/50	CONTRACT Pm 12/15/50				
52	12/15/50	ASSLT DES. 6				
53	12/15/50	CONTRACT SECRET 12/15/50				
54	12/15/50	ASSLT DES. 5				
55	12/15/50	CONTRACT Pm 12/15/50				
56	12/15/50	ASSLT DES. 4				
57	12/15/50	CONTRACT SECRET 12/15/50				
58	12/15/50	ASSLT DES. 3				
59	12/15/50	CONTRACT Pm 12/15/50				
60	12/15/50	ASSLT DES. 2				
61	12/15/50	CONTRACT SECRET 12/15/50				
62	12/15/50	ASSLT DES. 1				



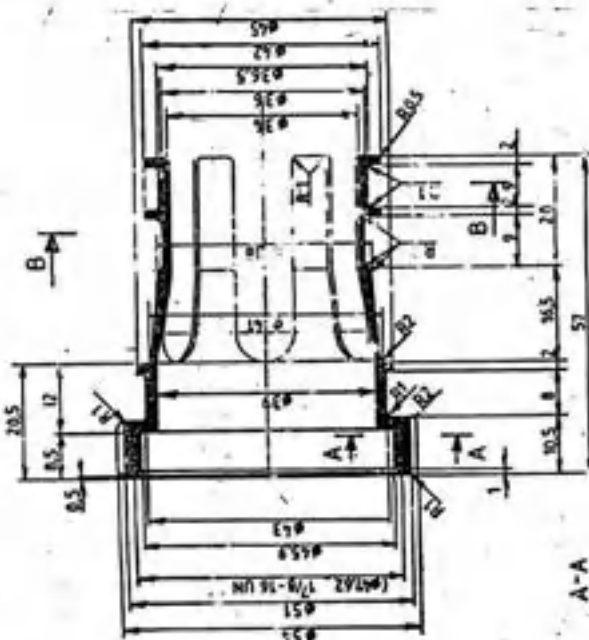
Größe	A	B	C
32	31,2	40,1	417,430,1

FIG 2



Größe	A	B	C
32	31,2	40,1	417,430,1

ASPLY DRG. 33



A-A

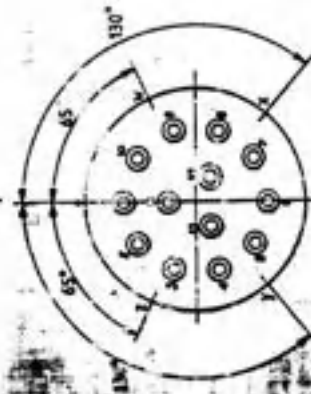


FIG-1

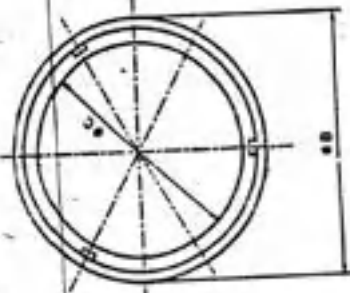


FIG-3

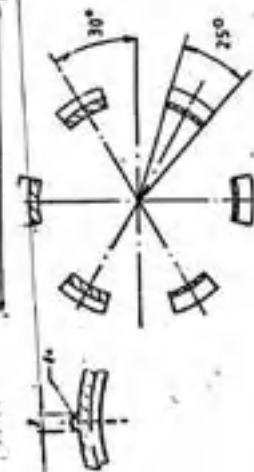


FIG 4

FIG 4: CABLE SLEEVE SIZE 32 MM.  
FIG 3: BUSHING, SIZE 32  
FIG 1: BUSHING TEMPLATE, SIZE 32/13P  
FIG 2: PLUG, BODY SIZE 32\*8"

Größe	A	B	C
32	31,2	40,1	417,430,1

ASPLY DRG. 33

FIG 2

FIG 3

FIG 4

FIG 5

FIG 6

FIG 7

FIG 8

FIG 9

FIG 10

FIG 11

FIG 12

FIG 13

FIG 14

FIG 15

FIG 16

FIG 17

FIG 18

FIG 19

FIG 20

FIG 21

FIG 22

FIG 23

FIG 24

FIG 25

FIG 26

FIG 27

FIG 28

FIG 29

FIG 30

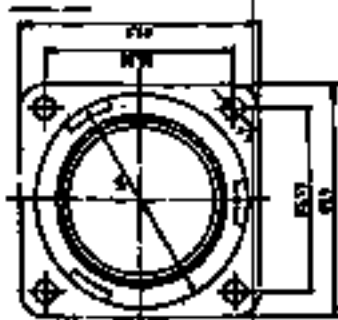
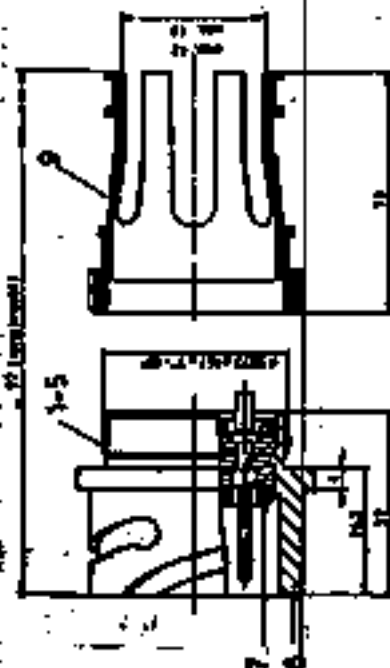
FIG 31

FIG 32

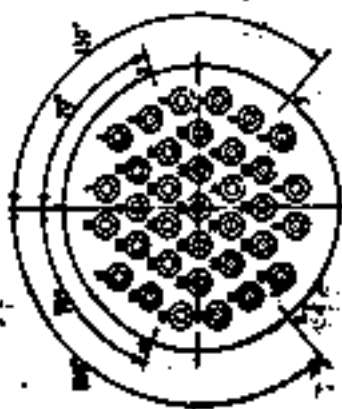
FIG 33

FIG 34

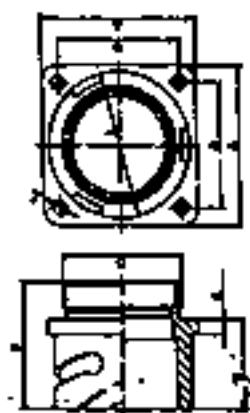
FIG 35

[illegible]

AGSLY.DRG - 35. -



**FIG. - 1.**

[illegible]

**Fig.**

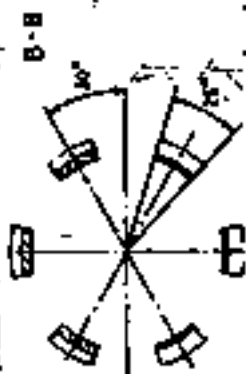
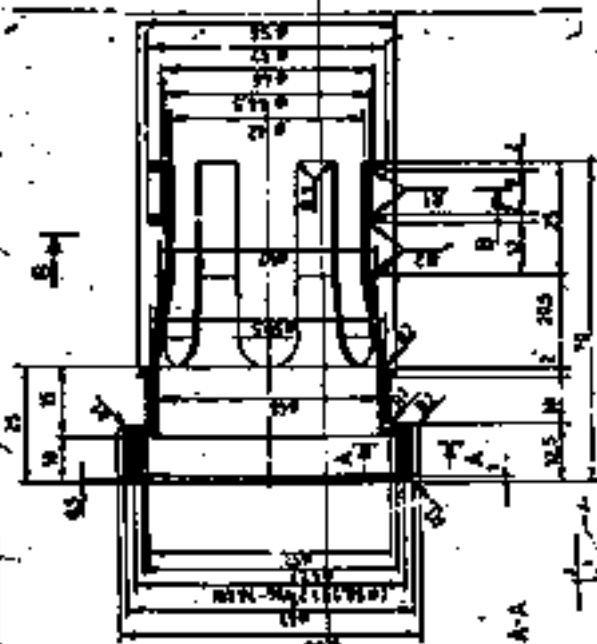
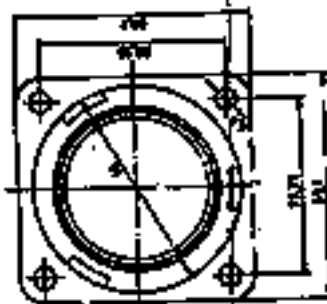
[illegible]

6/12/74, 11:50 AM of  
Computer

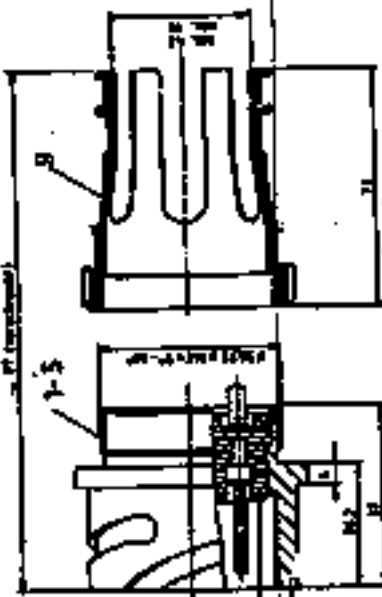
4-75 N 10th - 305 PM/JSJ/2070  
 ON 06/07/00 09:00 AM

**2007**

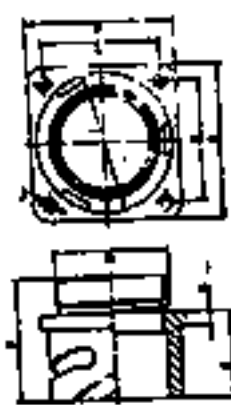
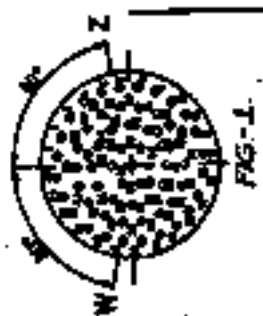


[illegible]

PA 0005	PA 0006	PA 0007	PA 0008	PA 0009	PA 0010	PA 0011	PA 0012	PA 0013	PA 0014	PA 0015	PA 0016	PA 0017	PA 0018	PA 0019	PA 0020	PA 0021	PA 0022	PA 0023	PA 0024	PA 0025	PA 0026	PA 0027	PA 0028	PA 0029	PA 0030	PA 0031	PA 0032	PA 0033	PA 0034	PA 0035	PA 0036	PA 0037	PA 0038	PA 0039	PA 0040	PA 0041	PA 0042	PA 0043	PA 0044	PA 0045	PA 0046	PA 0047	PA 0048	PA 0049	PA 0050	PA 0051	PA 0052	PA 0053	PA 0054	PA 0055	PA 0056	PA 0057	PA 0058	PA 0059	PA 0060	PA 0061	PA 0062	PA 0063	PA 0064	PA 0065	PA 0066	PA 0067	PA 0068	PA 0069	PA 0070	PA 0071	PA 0072	PA 0073	PA 0074	PA 0075	PA 0076	PA 0077	PA 0078	PA 0079	PA 0080	PA 0081	PA 0082	PA 0083	PA 0084	PA 0085	PA 0086	PA 0087	PA 0088	PA 0089	PA 0090	PA 0091	PA 0092	PA 0093	PA 0094	PA 0095	PA 0096	PA 0097	PA 0098	PA 0099	PA 0100	PA 0101	PA 0102	PA 0103	PA 0104	PA 0105	PA 0106	PA 0107	PA 0108	PA 0109	PA 0110	PA 0111	PA 0112	PA 0113	PA 0114	PA 0115	PA 0116	PA 0117	PA 0118	PA 0119	PA 0120	PA 0121	PA 0122	PA 0123	PA 0124	PA 0125	PA 0126	PA 0127	PA 0128	PA 0129	PA 0130	PA 0131	PA 0132	PA 0133	PA 0134	PA 0135	PA 0136	PA 0137	PA 0138	PA 0139	PA 0140	PA 0141	PA 0142	PA 0143	PA 0144	PA 0145	PA 0146	PA 0147	PA 0148	PA 0149	PA 0150	PA 0151	PA 0152	PA 0153	PA 0154	PA 0155	PA 0156	PA 0157	PA 0158	PA 0159	PA 0160	PA 0161	PA 0162	PA 0163	PA 0164	PA 0165	PA 0166	PA 0167	PA 0168	PA 0169	PA 0170	PA 0171	PA 0172	PA 0173	PA 0174	PA 0175	PA 0176	PA 0177	PA 0178	PA 0179	PA 0180	PA 0181	PA 0182	PA 0183	PA 0184	PA 0185	PA 0186	PA 0187	PA 0188	PA 0189	PA 0190	PA 0191	PA 0192	PA 0193	PA 0194	PA 0195	PA 0196	PA 0197	PA 0198	PA 0199	PA 0200	PA 0201	PA 0202	PA 0203	PA 0204	PA 0205	PA 0206	PA 0207	PA 0208	PA 0209	PA 0210	PA 0211	PA 0212	PA 0213	PA 0214	PA 0215	PA 0216	PA 0217	PA 0218	PA 0219	PA 0220	PA 0221	PA 0222	PA 0223	PA 0224	PA 0225	PA 0226	PA 0227	PA 0228	PA 0229	PA 0230	PA 0231	PA 0232	PA 0233	PA 0234	PA 0235	PA 0236	PA 0237	PA 0238	PA 0239	PA 0240	PA 0241	PA 0242	PA 0243	PA 0244	PA 0245	PA 0246	PA 0247	PA 0248	PA 0249	PA 0250	PA 0251	PA 0252	PA 0253	PA 0254	PA 0255	PA 0256	PA 0257	PA 0258	PA 0259	PA 0260	PA 0261	PA 0262	PA 0263	PA 0264	PA 0265	PA 0266	PA 0267	PA 0268	PA 0269	PA 0270	PA 0271	PA 0272	PA 0273	PA 0274	PA 0275	PA 0276	PA 0277	PA 0278	PA 0279	PA 0280	PA 0281	PA 0282	PA 0283	PA 0284	PA 0285	PA 0286	PA 0287	PA 0288	PA 0289	PA 0290	PA 0291	PA 0292	PA 0293	PA 0294	PA 0295	PA 0296	PA 0297	PA 0298	PA 0299	PA 0300	PA 0301	PA 0302	PA 0303	PA 0304	PA 0305	PA 0306	PA 0307	PA 0308	PA 0309	PA 0310	PA 0311	PA 0312	PA 0313	PA 0314	PA 0315	PA 0316	PA 0317	PA 0318	PA 0319	PA 0320	PA 0321	PA 0322	PA 0323	PA 0324	PA 0325	PA 0326	PA 0327	PA 0328	PA 0329	PA 0330	PA 0331	PA 0332	PA 0333	PA 0334	PA 0335	PA 0336	PA 0337	PA 0338	PA 0339	PA 0340	PA 0341	PA 0342	PA 0343	PA 0344	PA 0345	PA 0346	PA 0347	PA 0348	PA 0349	PA 0350	PA 0351	PA 0352	PA 0353	PA 0354	PA 0355	PA 0356	PA 0357	PA 0358	PA 0359	PA 0360	PA 0361	PA 0362	PA 0363	PA 0364	PA 0365	PA 0366	PA 0367	PA 0368	PA 0369	PA 0370	PA 0371	PA 0372	PA 0373	PA 0374	PA 0375	PA 0376	PA 0377	PA 0378	PA 0379	PA 0380	PA 0381	PA 0382	PA 0383	PA 0384	PA 0385	PA 0386	PA 0387	PA 0388	PA 0389	PA 0390	PA 0391	PA 0392	PA 0393	PA 0394	PA 0395	PA 0396	PA 0397	PA 0398	PA 0399	PA 0400	PA 0401	PA 0402	PA 0403	PA 0404	PA 0405	PA 0406	PA 0407	PA 0408	PA 0409	PA 0410	PA 0411	PA 0412	PA 0413	PA 0414	PA 0415	PA 0416	PA 0417	PA 0418	PA 0419	PA 0420	PA 0421	PA 0422	PA 0423	PA 0424	PA 0425	PA 0426	PA 0427	PA 0428	PA 0429	PA 0430	PA 0431	PA 0432	PA 0433	PA 0434	PA 0435	PA 0436	PA 0437	PA 0438	PA 0439	PA 0440	PA 0441	PA 0442	PA 0443	PA 0444	PA 0445	PA 0446	PA 0447	PA 0448	PA 0449	PA 0450	PA 0451	PA 0452	PA 0453	PA 0454	PA 0455	PA 0456	PA 0457	PA 0458	PA 0459	PA 0460	PA 0461	PA 0462	PA 0463	PA 0464	PA 0465	PA 0466	PA 0467	PA 0468	PA 0469	PA 0470	PA 0471	PA 0472	PA 0473	PA 0474	PA 0475	PA 0476	PA 0477	PA 0478	PA 0479	PA 0480	PA 0481	PA 0482	PA 0483	PA 0484	PA 0485	PA 0486	PA 0487	PA 0488	PA 0489	PA 0490	PA 0491	PA 0492	PA 0493	PA 0494	PA 0495	PA 0496	PA 0497	PA 0498	PA 0499	PA 0500	PA 0501	PA 0502	PA 0503	PA 0504	PA 0505	PA 0506	PA 0507	PA 0508	PA 0509	PA 0510	PA 0511	PA 0512	PA 0513	PA 0514	PA 0515	PA 0516	PA 0517	PA 0518	PA 0519	PA 0520	PA 0521	PA 0522	PA 0523	PA 0524	PA 0525	PA 0526	PA 0527	PA 0528	PA 0529	PA 0530	PA 0531	PA 0532	PA 0533	PA 0534	PA 0535	PA 0536	PA 0537	PA 0538	PA 0539	PA 0540	PA 0541	PA 0542	PA 0543	PA 0544	PA 0545	PA 0546	PA 0547	PA 0548	PA 0549	PA 0550	PA 0551	PA 0552	PA 0553	PA 0554	PA 0555	PA 0556	PA 0557	PA 0558	PA 0559	PA 0560	PA 0561	PA 0562	PA 0563	PA 0564	PA 0565	PA 0566	PA 0567	PA 0568	PA 0569	PA 0570	PA 0571	PA 0572	PA 0573	PA 0574	PA 0575	PA 0576	PA 0577	PA 0578	PA 0579	PA 0580	PA 0581	PA 0582	PA 0583	PA 0584	PA 0585	PA 0586	PA 0587	PA 0588	PA 0589	PA 0590	PA 0591	PA 0592	PA 0593	PA 0594	PA 0595	PA 0596	PA 0597	PA 0598	PA 0599	PA 0600	PA 0601	PA 0602	PA 0603	PA 0604	PA 0605	PA 0606	PA 0607	PA 0608	PA 0609	PA 0610	PA 0611	PA 0612	PA 0613	PA 0614	PA 0615	PA 0616	PA 0617	PA 0618	PA 0619	PA 0620	PA 0621	PA 0622	PA 0623	PA 0624	PA 0625	PA 0626	PA 0627	PA 0628	PA 0629	PA 0630	PA 0631	PA 0632	PA 0633	PA 0634	PA 0635	PA 0636	PA 0637	PA 0638	PA 0639	PA 0640	PA 0641	PA 0642	PA 0643	PA 0644	PA 0645	PA 0646	PA 0647	PA 0648	PA 0649	PA 0650	PA 0651	PA 0652	PA 0653	PA 0654	PA 0655	PA 0656	PA 0657	PA 0658	PA 0659	PA 0660	PA 0661	PA 0662	PA 0663	PA 0664	PA 0665	PA 0666	PA 0667	PA 0668	PA 0669	PA 0670	PA 0671	PA 0672	PA 0673	PA 0674	PA 0675	PA 0676	PA 0677	PA 0678	PA 0679	PA 0680	PA 0681	PA 0682	PA 0683	PA 0684	PA 0685	PA 0686	PA 0687	PA 0688	PA 0689	PA 0690	PA 0691	PA 0692	PA 0693	PA 0694	PA 0695	PA 0696	PA 0697	PA 0698	PA 0699	PA 0700	PA 0701	PA 0702	PA 0703	PA 0704	PA 0705	PA 0706	PA 0707	PA 0708	PA 0709	PA 0710	PA 0711	PA 0712	PA 0713	PA 0714	PA 0715	PA 0716	PA 0717	PA 0718	PA 0719	PA 0720	PA 0721	PA 0722	PA 0723	PA 0724	PA 0725	PA 0726	PA 0727	PA 0728	PA 0729	PA 0730	PA 0731	PA 0732	PA 0733	PA 0734	PA 0735	PA 0736	PA 0737	PA 0738	PA 0739	PA 0740	PA 0741	PA 0742	PA 0743	PA 0744	PA 0745	PA 0746	PA 0747	PA 0748	PA 0749	PA 0750	PA 0751	PA 0752	PA 0753	PA 0754	PA 0755	PA 0756	PA 0757	PA 0758	PA 0759	PA 0760	PA 0761	PA 0762	PA 0763	PA 0764	PA 0765	PA 0766	PA 0767	PA 0768	PA 0769	PA 0770	PA 0771	PA 0772	PA 0773	PA 0774	PA 0775	PA 0776	PA 0777	PA 0778	PA 0779	PA 0780	PA 0781	PA 0782	PA 0783	PA 0784	PA 0785	PA 0786	PA 0787	PA 0788	PA 0789	PA 0790	PA 0791	PA 0792	PA 0793	PA 0794	PA 0795	PA 0796	PA 0797	PA 0798	PA 0799	PA 0800	PA 0801	PA 0802	PA 0803	PA 0804	PA 0805	PA 0806	PA 0807	PA 0808	PA 0809	PA 0810	PA 0811	PA 0812	PA 0813	PA 0814	PA 0815	PA 0816	PA 0817	PA 0818	PA 0819	PA 0820	PA 0821	PA 0822	PA 0823	PA 0824	PA 0825	PA 0826	PA 0827	PA 0828	PA 0829	PA 0830	PA 0831	PA 0832	PA 0833	PA 0834	PA 0835	PA 0836	PA 0837	PA 0838	PA 0839	PA 0840	PA 0841	PA 0842	PA 0843	PA 0844	PA 0845	PA 0846	PA 0847	PA 0848	PA 0849	PA 0850	PA 0851	PA 0852	PA 0853	PA 0854	PA 0855	PA 0856	PA 0857	PA 0858	PA 0859	PA 0860	PA 0861	PA 0862	PA 0863	PA 0864	PA 0865	PA 0866	PA 0867	PA 0868	PA 0869	PA 0870	PA 0871	PA 0872	PA 0873	PA 0874	PA 0875	PA 0876	PA 0877	PA 0878	PA 0879	PA 0880	PA 0881	PA 0882	PA 0883	PA 0884	PA 0885	PA 0886	PA 0887	PA 0888	PA 0889	PA 0890	PA 0891	PA 0892	PA 0893	PA 0894	PA 0895	PA 0896	PA 0897	PA 0898	PA 0899	PA 0900	PA 0901	PA 0902	PA 0903	PA 0904	PA 0905	PA 0906	PA 0907	PA 0908	PA 0909	PA 0910	PA 0911	PA 0912	PA 0913	PA 0914	PA 0915	PA 0916	PA 0917	PA 0918	PA 0919	PA 0920	PA 0921	PA 0922	PA 0923	PA 0924	PA 0925	PA 0926	PA 0927	PA 0928	PA 0929	PA 0930	PA 0931	PA 0932	PA 0933	PA 0934	PA 0935	PA 0936	PA 0937	PA 0938	PA 0939	PA 0940	PA 0941	PA 0942	PA 0943	PA 0944	PA 0945	PA 0946	PA 0947	PA 0948	PA 0949	PA 0950	PA 0951	PA 0952	PA 0953	PA 0954	PA 0955	PA 0956	PA 0957	PA 0958	PA 0959	PA 0960	PA 0961	PA 0962	PA 0963	PA 0964	PA 0965	PA 0966	PA 0967	PA 0968	PA 0969	PA 0970	PA 0971	PA 0972	PA 0973	PA 0974	PA 0975	PA 0976	PA 0977	PA 0978	PA 0979	PA 0980	PA 0981	PA 0982	PA 0983	PA 0984	PA 0985	PA 0986	PA 0987	PA 0988	PA 0989	PA 0990	PA 0991	PA 0992	PA 0993	PA 0994	PA 0995	PA 0996	PA 0997	PA 0998	PA 0999	PA 1000	PA 1001	PA 1002	PA 1003	PA 1004	PA 1005	PA 1006	PA 1007	PA 1008	PA 1009	PA 1010	PA 1011	PA 1012	PA 1013	PA 1014	PA 1015	PA 1016	PA 1017	PA 1018	PA 1019	PA 1020	PA 1021	PA 1022	PA 1023	PA 1024	PA 1025	PA 1026	PA 1027	PA 1028	PA 1029	PA 1030	PA 1031	PA 1032	PA 1033	PA 1034	PA 1035	PA 1036	PA 1037	PA 1038	PA 1039	PA 1040	PA 1041	PA 1042	PA 1043	PA 1044	PA 1045	PA 1046	PA 1047	PA 1048	PA 1049	PA 1050	PA 1051	PA 1052	PA 1053	PA 1054	PA 1055	PA 1056	PA 1057	PA 1058	PA 1059	PA 1060	PA 1061	PA 1062	PA 1063	PA 1064	PA 1065	PA 1066	PA 1067	PA 1068	PA 1069	PA 1070	PA 1071	PA 1072	PA 1073	PA 1074	PA 1075	PA 1076	PA 1077	PA 1078	PA 1079	PA 1080	PA 1081	PA 1082	PA 1083	PA 1084	PA 1085	PA 1086	PA 1087	PA 1088	PA 1089	PA 1090	PA 1091	PA 1092	PA 1093	PA 1094	PA 1095	PA 1096	PA 1097	PA 1098	PA 1099	PA 1100	PA 1101	PA 1102	PA 1103	PA 1104	PA 1105	PA 1106	PA 1107	PA 1108	PA 1109	PA 1110	PA 1111	PA 1112	PA 1113	PA 1114	PA 1115	PA 1116	PA 1117	PA 1118	PA 1119	PA 1120	PA 1121	PA 1122	PA 1123	PA 1124	PA 1125	PA 1126	PA 1127	PA 1128	PA 1129	
---------	---------	---------	---------	---------	---------	---------	---------	---------	---------	---------	---------	---------	---------	---------	---------	---------	---------	---------	---------	---------	---------	---------	---------	---------	---------	---------	---------	---------	---------	---------	---------	---------	---------	---------	---------	---------	---------	---------	---------	---------	---------	---------	---------	---------	---------	---------	---------	---------	---------	---------	---------	---------	---------	---------	---------	---------	---------	---------	---------	---------	---------	---------	---------	---------	---------	---------	---------	---------	---------	---------	---------	---------	---------	---------	---------	---------	---------	---------	---------	---------	---------	---------	---------	---------	---------	---------	---------	---------	---------	---------	---------	---------	---------	---------	---------	---------	---------	---------	---------	---------	---------	---------	---------	---------	---------	---------	---------	---------	---------	---------	---------	---------	---------	---------	---------	---------	---------	---------	---------	---------	---------	---------	---------	---------	---------	---------	---------	---------	---------	---------	---------	---------	---------	---------	---------	---------	---------	---------	---------	---------	---------	---------	---------	---------	---------	---------	---------	---------	---------	---------	---------	---------	---------	---------	---------	---------	---------	---------	---------	---------	---------	---------	---------	---------	---------	---------	---------	---------	---------	---------	---------	---------	---------	---------	---------	---------	---------	---------	---------	---------	---------	---------	---------	---------	---------	---------	---------	---------	---------	---------	---------	---------	---------	---------	---------	---------	---------	---------	---------	---------	---------	---------	---------	---------	---------	---------	---------	---------	---------	---------	---------	---------	---------	---------	---------	---------	---------	---------	---------	---------	---------	---------	---------	---------	---------	---------	---------	---------	---------	---------	---------	---------	---------	---------	---------	---------	---------	---------	---------	---------	---------	---------	---------	---------	---------	---------	---------	---------	---------	---------	---------	---------	---------	---------	---------	---------	---------	---------	---------	---------	---------	---------	---------	---------	---------	---------	---------	---------	---------	---------	---------	---------	---------	---------	---------	---------	---------	---------	---------	---------	---------	---------	---------	---------	---------	---------	---------	---------	---------	---------	---------	---------	---------	---------	---------	---------	---------	---------	---------	---------	---------	---------	---------	---------	---------	---------	---------	---------	---------	---------	---------	---------	---------	---------	---------	---------	---------	---------	---------	---------	---------	---------	---------	---------	---------	---------	---------	---------	---------	---------	---------	---------	---------	---------	---------	---------	---------	---------	---------	---------	---------	---------	---------	---------	---------	---------	---------	---------	---------	---------	---------	---------	---------	---------	---------	---------	---------	---------	---------	---------	---------	---------	---------	---------	---------	---------	---------	---------	---------	---------	---------	---------	---------	---------	---------	---------	---------	---------	---------	---------	---------	---------	---------	---------	---------	---------	---------	---------	---------	---------	---------	---------	---------	---------	---------	---------	---------	---------	---------	---------	---------	---------	---------	---------	---------	---------	---------	---------	---------	---------	---------	---------	---------	---------	---------	---------	---------	---------	---------	---------	---------	---------	---------	---------	---------	---------	---------	---------	---------	---------	---------	---------	---------	---------	---------	---------	---------	---------	---------	---------	---------	---------	---------	---------	---------	---------	---------	---------	---------	---------	---------	---------	---------	---------	---------	---------	---------	---------	---------	---------	---------	---------	---------	---------	---------	---------	---------	---------	---------	---------	---------	---------	---------	---------	---------	---------	---------	---------	---------	---------	---------	---------	---------	---------	---------	---------	---------	---------	---------	---------	---------	---------	---------	---------	---------	---------	---------	---------	---------	---------	---------	---------	---------	---------	---------	---------	---------	---------	---------	---------	---------	---------	---------	---------	---------	---------	---------	---------	---------	---------	---------	---------	---------	---------	---------	---------	---------	---------	---------	---------	---------	---------	---------	---------	---------	---------	---------	---------	---------	---------	---------	---------	---------	---------	---------	---------	---------	---------	---------	---------	---------	---------	---------	---------	---------	---------	---------	---------	---------	---------	---------	---------	---------	---------	---------	---------	---------	---------	---------	---------	---------	---------	---------	---------	---------	---------	---------	---------	---------	---------	---------	---------	---------	---------	---------	---------	---------	---------	---------	---------	---------	---------	---------	---------	---------	---------	---------	---------	---------	---------	---------	---------	---------	---------	---------	---------	---------	---------	---------	---------	---------	---------	---------	---------	---------	---------	---------	---------	---------	---------	---------	---------	---------	---------	---------	---------	---------	---------	---------	---------	---------	---------	---------	---------	---------	---------	---------	---------	---------	---------	---------	---------	---------	---------	---------	---------	---------	---------	---------	---------	---------	---------	---------	---------	---------	---------	---------	---------	---------	---------	---------	---------	---------	---------	---------	---------	---------	---------	---------	---------	---------	---------	---------	---------	---------	---------	---------	---------	---------	---------	---------	---------	---------	---------	---------	---------	---------	---------	---------	---------	---------	---------	---------	---------	---------	---------	---------	---------	---------	---------	---------	---------	---------	---------	---------	---------	---------	---------	---------	---------	---------	---------	---------	---------	---------	---------	---------	---------	---------	---------	---------	---------	---------	---------	---------	---------	---------	---------	---------	---------	---------	---------	---------	---------	---------	---------	---------	---------	---------	---------	---------	---------	---------	---------	---------	---------	---------	---------	---------	---------	---------	---------	---------	---------	---------	---------	---------	---------	---------	---------	---------	---------	---------	---------	---------	---------	---------	---------	---------	---------	---------	---------	---------	---------	---------	---------	---------	---------	---------	---------	---------	---------	---------	---------	---------	---------	---------	---------	---------	---------	---------	---------	---------	---------	---------	---------	---------	---------	---------	---------	---------	---------	---------	---------	---------	---------	---------	---------	---------	---------	---------	---------	---------	---------	---------	---------	---------	---------	---------	---------	---------	---------	---------	---------	---------	---------	---------	---------	---------	---------	---------	---------	---------	---------	---------	---------	---------	---------	---------	---------	---------	---------	---------	---------	---------	---------	---------	---------	---------	---------	---------	---------	---------	---------	---------	---------	---------	---------	---------	---------	---------	---------	---------	---------	---------	---------	---------	---------	---------	---------	---------	---------	---------	---------	---------	---------	---------	---------	---------	---------	---------	---------	---------	---------	---------	---------	---------	---------	---------	---------	---------	---------	---------	---------	---------	---------	---------	---------	---------	---------	---------	---------	---------	---------	---------	---------	---------	---------	---------	---------	---------	---------	---------	---------	---------	---------	---------	---------	---------	---------	---------	---------	---------	---------	---------	---------	---------	---------	---------	---------	---------	---------	---------	---------	---------	---------	---------	---------	---------	---------	---------	---------	---------	---------	---------	---------	---------	---------	---------	---------	---------	---------	---------	---------	---------	---------	---------	---------	---------	---------	---------	---------	---------	---------	---------	---------	---------	---------	---------	---------	---------	---------	---------	---------	---------	---------	---------	---------	---------	---------	---------	---------	---------	---------	---------	---------	---------	---------	---------	---------	---------	---------	---------	---------	---------	---------	---------	---------	---------	---------	---------	---------	---------	---------	---------	---------	---------	---------	---------	---------	---------	---------	---------	---------	---------	---------	---------	---------	---------	---------	---------	---------	---------	---------	---------	---------	---------	---------	---------	---------	---------	---------	---------	---------	---------	---------	---------	---------	---------	---------	---------	---------	---------	---------	---------	---------	---------	---------	---------	---------	---------	---------	---------	---------	---------	---------	---------	---------	---------	---------	---------	---------	---------	---------	---------	---------	---------	---------	---------	---------	---------	---------	---------	---------	---------	---------	---------	---------	---------	---------	---------	---------	---------	---------	---------	---------	---------	---------	---------	---------	---------	---------	---------	---------	---------	---------	---------	---------	---------	---------	---------	---------	---------	---------	---------	---------	---------	---------	---------	---------	---------	---------	---------	---------	---------	---------	---------	---------	---------	---------	---------	---------	---------	---------	--



**ASSLY. 2003. 32. 318.**



**AACSB**

**Fig 2**



FIG 4



FIG 5

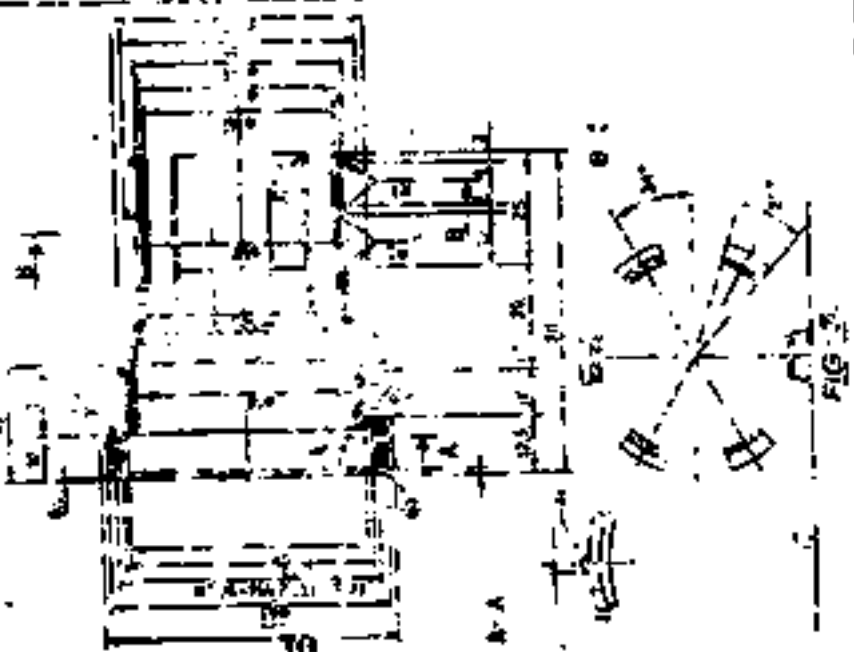
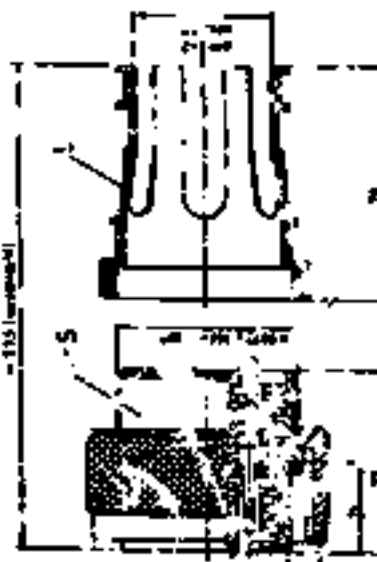


FIG 6



ASSLY DRG 3

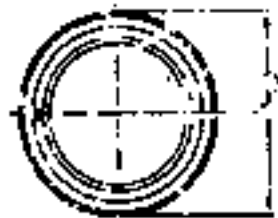


FIG 7

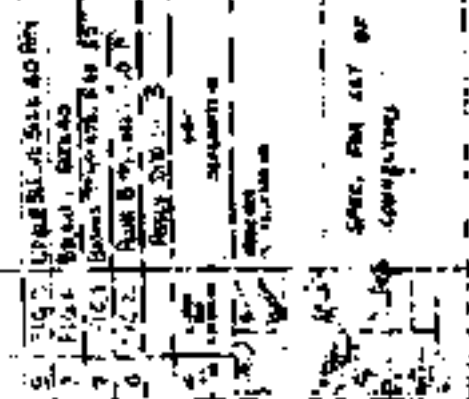


FIG 8

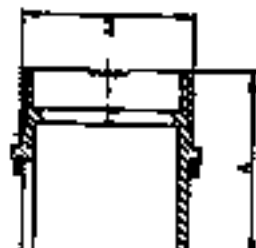
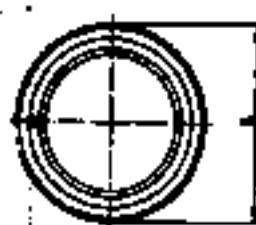


FIG-4

ITEM	QTY	DESCRIPTION
1	1	COVER PLATE
2	1	BASE PLATE
3	1	SPACER
4	1	SCREW

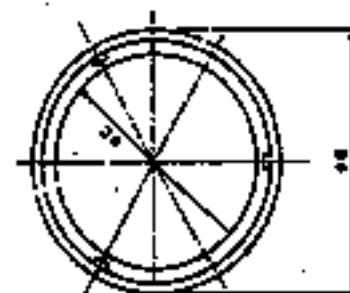
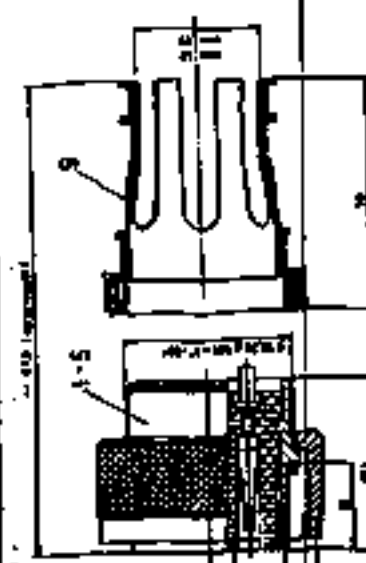


FIG-5

ITEM	QTY	DESCRIPTION
1	1	COVER PLATE
2	1	BASE PLATE
3	1	SPACER
4	1	SCREW



PROPERTY

ITEM	QTY	DESCRIPTION
1	1	COVER PLATE
2	1	BASE PLATE
3	1	SPACER
4	1	SCREW

ASSLY DRG 38

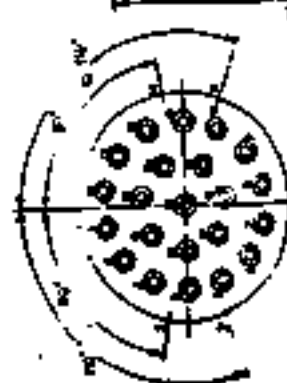
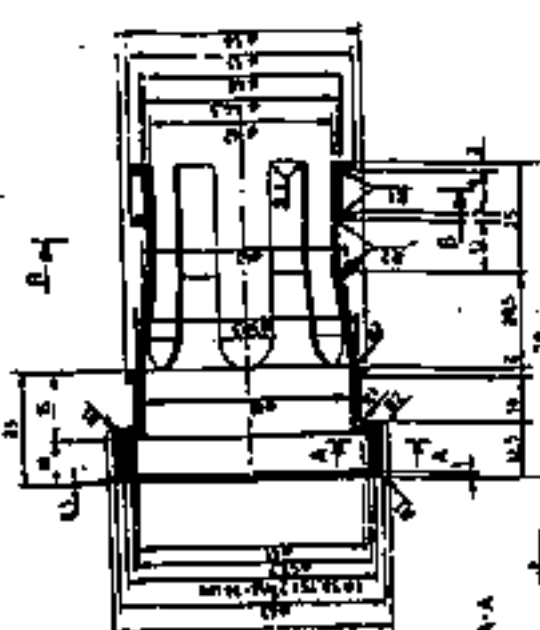
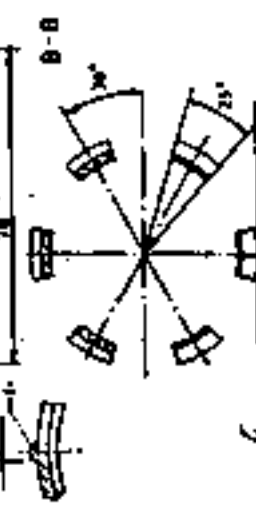


FIG-1



A-A

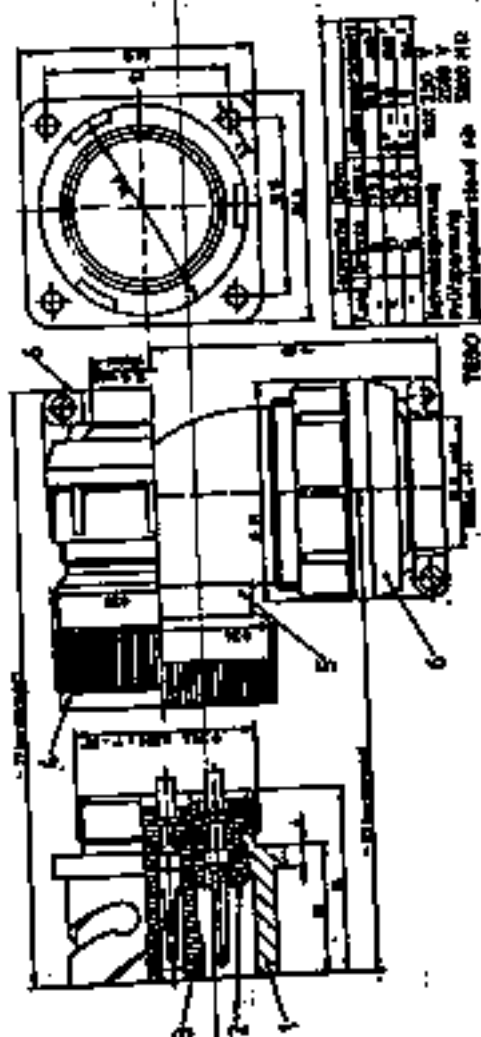


FIG-2

FIG-3

ITEM	QTY	DESCRIPTION
1	1	COVER PLATE
2	1	BASE PLATE
3	1	SPACER
4	1	SCREW
5	1	WASHER
6	1	WASHER
7	1	WASHER
8	1	WASHER
9	1	WASHER
10	1	WASHER
11	1	WASHER
12	1	WASHER
13	1	WASHER
14	1	WASHER
15	1	WASHER
16	1	WASHER
17	1	WASHER
18	1	WASHER
19	1	WASHER
20	1	WASHER
21	1	WASHER
22	1	WASHER
23	1	WASHER
24	1	WASHER
25	1	WASHER
26	1	WASHER
27	1	WASHER
28	1	WASHER
29	1	WASHER
30	1	WASHER
31	1	WASHER
32	1	WASHER
33	1	WASHER
34	1	WASHER
35	1	WASHER
36	1	WASHER
37	1	WASHER
38	1	WASHER
39	1	WASHER
40	1	WASHER
41	1	WASHER
42	1	WASHER
43	1	WASHER
44	1	WASHER
45	1	WASHER
46	1	WASHER
47	1	WASHER
48	1	WASHER
49	1	WASHER
50	1	WASHER
51	1	WASHER
52	1	WASHER
53	1	WASHER
54	1	WASHER
55	1	WASHER
56	1	WASHER
57	1	WASHER
58	1	WASHER
59	1	WASHER
60	1	WASHER
61	1	WASHER
62	1	WASHER
63	1	WASHER
64	1	WASHER
65	1	WASHER
66	1	WASHER
67	1	WASHER
68	1	WASHER
69	1	WASHER
70	1	WASHER
71	1	WASHER
72	1	WASHER
73	1	WASHER
74	1	WASHER
75	1	WASHER
76	1	WASHER
77	1	WASHER
78	1	WASHER
79	1	WASHER
80	1	WASHER
81	1	WASHER
82	1	WASHER
83	1	WASHER
84	1	WASHER
85	1	WASHER
86	1	WASHER
87	1	WASHER
88	1	WASHER
89	1	WASHER
90	1	WASHER
91	1	WASHER
92	1	WASHER
93	1	WASHER
94	1	WASHER
95	1	WASHER
96	1	WASHER
97	1	WASHER
98	1	WASHER
99	1	WASHER
100	1	WASHER

APPROVED BY: [Signature]  
 DATE: [Date]  
 DRAWN BY: [Signature]  
 CHECKED BY: [Signature]  
 TITLE: [Title]  
 PROJECT: [Project]  
 SHEET NO: [Sheet No]  
 TOTAL SHEETS: [Total Sheets]



ASSEMBLY DRAWING NO. 40

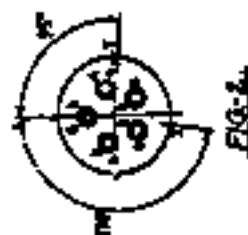


FIG. 2

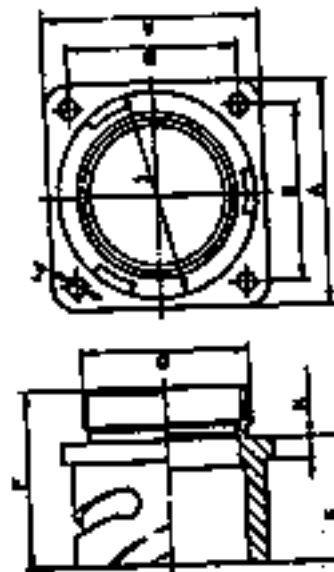


FIG. 3

FIG.	DESCRIPTION	QTY.	UNIT	PRICE
2	FIG. 1	1	FIG. 1	1.00
1	FIG. 2	1	FIG. 2	1.00
1	FIG. 3	1	FIG. 3	1.00
1	FIG. 4	1	FIG. 4	1.00
1	FIG. 5	1	FIG. 5	1.00
1	FIG. 6	1	FIG. 6	1.00
1	FIG. 7	1	FIG. 7	1.00
1	FIG. 8	1	FIG. 8	1.00
1	FIG. 9	1	FIG. 9	1.00
1	FIG. 10	1	FIG. 10	1.00
1	FIG. 11	1	FIG. 11	1.00
1	FIG. 12	1	FIG. 12	1.00
1	FIG. 13	1	FIG. 13	1.00
1	FIG. 14	1	FIG. 14	1.00
1	FIG. 15	1	FIG. 15	1.00
1	FIG. 16	1	FIG. 16	1.00
1	FIG. 17	1	FIG. 17	1.00
1	FIG. 18	1	FIG. 18	1.00
1	FIG. 19	1	FIG. 19	1.00
1	FIG. 20	1	FIG. 20	1.00
1	FIG. 21	1	FIG. 21	1.00
1	FIG. 22	1	FIG. 22	1.00
1	FIG. 23	1	FIG. 23	1.00
1	FIG. 24	1	FIG. 24	1.00
1	FIG. 25	1	FIG. 25	1.00
1	FIG. 26	1	FIG. 26	1.00
1	FIG. 27	1	FIG. 27	1.00
1	FIG. 28	1	FIG. 28	1.00
1	FIG. 29	1	FIG. 29	1.00
1	FIG. 30	1	FIG. 30	1.00
1	FIG. 31	1	FIG. 31	1.00
1	FIG. 32	1	FIG. 32	1.00
1	FIG. 33	1	FIG. 33	1.00
1	FIG. 34	1	FIG. 34	1.00
1	FIG. 35	1	FIG. 35	1.00
1	FIG. 36	1	FIG. 36	1.00
1	FIG. 37	1	FIG. 37	1.00
1	FIG. 38	1	FIG. 38	1.00
1	FIG. 39	1	FIG. 39	1.00
1	FIG. 40	1	FIG. 40	1.00
1	FIG. 41	1	FIG. 41	1.00
1	FIG. 42	1	FIG. 42	1.00
1	FIG. 43	1	FIG. 43	1.00
1	FIG. 44	1	FIG. 44	1.00
1	FIG. 45	1	FIG. 45	1.00
1	FIG. 46	1	FIG. 46	1.00
1	FIG. 47	1	FIG. 47	1.00
1	FIG. 48	1	FIG. 48	1.00
1	FIG. 49	1	FIG. 49	1.00
1	FIG. 50	1	FIG. 50	1.00
1	FIG. 51	1	FIG. 51	1.00
1	FIG. 52	1	FIG. 52	1.00
1	FIG. 53	1	FIG. 53	1.00
1	FIG. 54	1	FIG. 54	1.00
1	FIG. 55	1	FIG. 55	1.00
1	FIG. 56	1	FIG. 56	1.00
1	FIG. 57	1	FIG. 57	1.00
1	FIG. 58	1	FIG. 58	1.00
1	FIG. 59	1	FIG. 59	1.00
1	FIG. 60	1	FIG. 60	1.00
1	FIG. 61	1	FIG. 61	1.00
1	FIG. 62	1	FIG. 62	1.00
1	FIG. 63	1	FIG. 63	1.00
1	FIG. 64	1	FIG. 64	1.00
1	FIG. 65	1	FIG. 65	1.00
1	FIG. 66	1	FIG. 66	1.00
1	FIG. 67	1	FIG. 67	1.00
1	FIG. 68	1	FIG. 68	1.00
1	FIG. 69	1	FIG. 69	1.00
1	FIG. 70	1	FIG. 70	1.00
1	FIG. 71	1	FIG. 71	1.00
1	FIG. 72	1	FIG. 72	1.00
1	FIG. 73	1	FIG. 73	1.00
1	FIG. 74	1	FIG. 74	1.00
1	FIG. 75	1	FIG. 75	1.00
1	FIG. 76	1	FIG. 76	1.00
1	FIG. 77	1	FIG. 77	1.00
1	FIG. 78	1	FIG. 78	1.00
1	FIG. 79	1	FIG. 79	1.00
1	FIG. 80	1	FIG. 80	1.00
1	FIG. 81	1	FIG. 81	1.00
1	FIG. 82	1	FIG. 82	1.00
1	FIG. 83	1	FIG. 83	1.00
1	FIG. 84	1	FIG. 84	1.00
1	FIG. 85	1	FIG. 85	1.00
1	FIG. 86	1	FIG. 86	1.00
1	FIG. 87	1	FIG. 87	1.00
1	FIG. 88	1	FIG. 88	1.00
1	FIG. 89	1	FIG. 89	1.00
1	FIG. 90	1	FIG. 90	1.00
1	FIG. 91	1	FIG. 91	1.00
1	FIG. 92	1	FIG. 92	1.00
1	FIG. 93	1	FIG. 93	1.00
1	FIG. 94	1	FIG. 94	1.00
1	FIG. 95	1	FIG. 95	1.00
1	FIG. 96	1	FIG. 96	1.00
1	FIG. 97	1	FIG. 97	1.00
1	FIG. 98	1	FIG. 98	1.00
1	FIG. 99	1	FIG. 99	1.00
1	FIG. 100	1	FIG. 100	1.00





ASSLY. DRG-44



ASBLY. PRG.-45



ASSLY. DRG.-46



ASSLY. DRG.-41



ASSLY. DRG.-42



ASSLY. DRG.-43

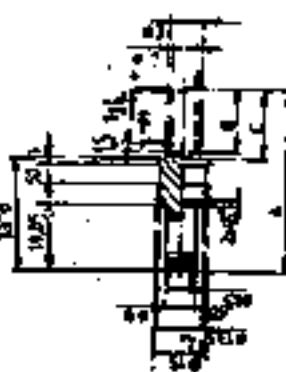
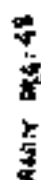
26



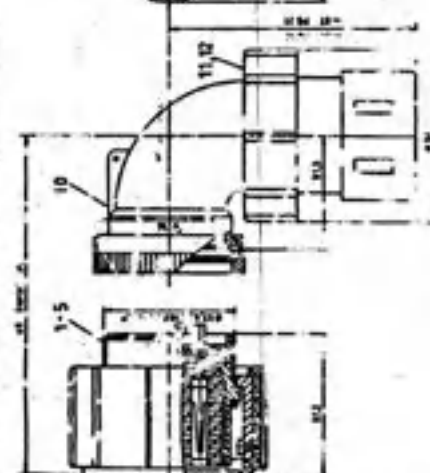
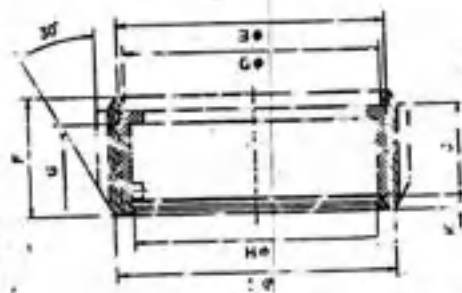
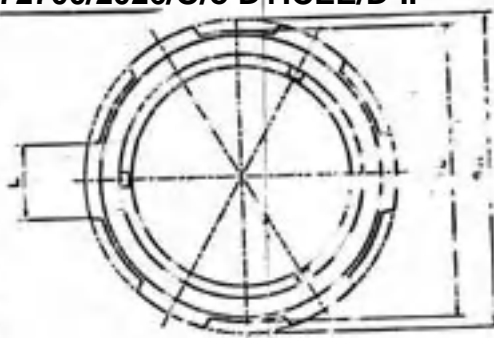
[illegible]

KABEL- GRÖßEN NOM.	A	B	C	$\phi B$	$\phi E$	$\phi L$
0 50	55	20,5	22	11,3		14,6
0 25	51	17	18	8,9		11,7

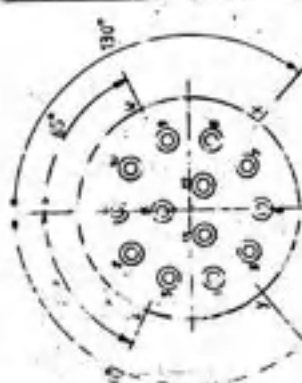
DocId: 34567890



44-38861-49



Part No.	QTY	Part Name
1	1	CONTACT PLATE
2	1	RECEPTOR
3	1	ADAPTER
4	1	CONNECTOR
5	1	WIRE
6	1	WIRE
7	1	WIRE
8	1	WIRE
9	1	WIRE
10	1	WIRE
11	1	WIRE
12	1	WIRE
13	1	WIRE
14	1	WIRE
15	1	WIRE
16	1	WIRE
17	1	WIRE
18	1	WIRE
19	1	WIRE
20	1	WIRE
21	1	WIRE
22	1	WIRE
23	1	WIRE
24	1	WIRE
25	1	WIRE
26	1	WIRE
27	1	WIRE
28	1	WIRE
29	1	WIRE
30	1	WIRE
31	1	WIRE
32	1	WIRE
33	1	WIRE
34	1	WIRE
35	1	WIRE
36	1	WIRE
37	1	WIRE
38	1	WIRE
39	1	WIRE
40	1	WIRE
41	1	WIRE
42	1	WIRE
43	1	WIRE
44	1	WIRE
45	1	WIRE
46	1	WIRE
47	1	WIRE
48	1	WIRE
49	1	WIRE
50	1	WIRE
51	1	WIRE
52	1	WIRE
53	1	WIRE
54	1	WIRE
55	1	WIRE
56	1	WIRE
57	1	WIRE
58	1	WIRE
59	1	WIRE
60	1	WIRE
61	1	WIRE
62	1	WIRE
63	1	WIRE
64	1	WIRE
65	1	WIRE
66	1	WIRE
67	1	WIRE
68	1	WIRE
69	1	WIRE
70	1	WIRE
71	1	WIRE
72	1	WIRE
73	1	WIRE
74	1	WIRE
75	1	WIRE
76	1	WIRE
77	1	WIRE
78	1	WIRE
79	1	WIRE
80	1	WIRE
81	1	WIRE
82	1	WIRE
83	1	WIRE
84	1	WIRE
85	1	WIRE
86	1	WIRE
87	1	WIRE
88	1	WIRE
89	1	WIRE
90	1	WIRE
91	1	WIRE
92	1	WIRE
93	1	WIRE
94	1	WIRE
95	1	WIRE
96	1	WIRE
97	1	WIRE
98	1	WIRE
99	1	WIRE
100	1	WIRE



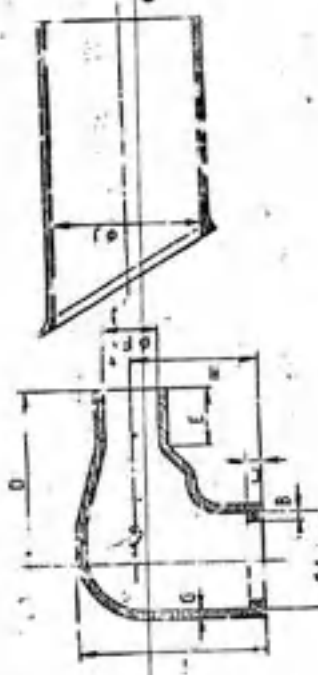
Frontansicht  
Matrize für Buchsen

Kontakt-Größe: 17

Fig. 1

Assembly - 52

Assembly - 52



Typ	A	B	C	D	E	F	G	H
30633	52.2	52.2	4.4	47.0	15.2	3.5	9.5	35

Fig. 2

Fig. 3

Part No.	QTY	Part Name
1	1	CONTACT PLATE
2	1	RECEPTOR
3	1	ADAPTER
4	1	CONNECTOR
5	1	WIRE
6	1	WIRE
7	1	WIRE
8	1	WIRE
9	1	WIRE
10	1	WIRE
11	1	WIRE
12	1	WIRE
13	1	WIRE
14	1	WIRE
15	1	WIRE
16	1	WIRE
17	1	WIRE
18	1	WIRE
19	1	WIRE
20	1	WIRE
21	1	WIRE
22	1	WIRE
23	1	WIRE
24	1	WIRE
25	1	WIRE
26	1	WIRE
27	1	WIRE
28	1	WIRE
29	1	WIRE
30	1	WIRE
31	1	WIRE
32	1	WIRE
33	1	WIRE
34	1	WIRE
35	1	WIRE
36	1	WIRE
37	1	WIRE
38	1	WIRE
39	1	WIRE
40	1	WIRE
41	1	WIRE
42	1	WIRE
43	1	WIRE
44	1	WIRE
45	1	WIRE
46	1	WIRE
47	1	WIRE
48	1	WIRE
49	1	WIRE
50	1	WIRE
51	1	WIRE
52	1	WIRE
53	1	WIRE
54	1	WIRE
55	1	WIRE
56	1	WIRE
57	1	WIRE
58	1	WIRE
59	1	WIRE
60	1	WIRE
61	1	WIRE
62	1	WIRE
63	1	WIRE
64	1	WIRE
65	1	WIRE
66	1	WIRE
67	1	WIRE
68	1	WIRE
69	1	WIRE
70	1	WIRE
71	1	WIRE
72	1	WIRE
73	1	WIRE
74	1	WIRE
75	1	WIRE
76	1	WIRE
77	1	WIRE
78	1	WIRE
79	1	WIRE
80	1	WIRE
81	1	WIRE
82	1	WIRE
83	1	WIRE
84	1	WIRE
85	1	WIRE
86	1	WIRE
87	1	WIRE
88	1	WIRE
89	1	WIRE
90	1	WIRE
91	1	WIRE
92	1	WIRE
93	1	WIRE
94	1	WIRE
95	1	WIRE
96	1	WIRE
97	1	WIRE
98	1	WIRE
99	1	WIRE
100	1	WIRE

Fig. 4

RECEIVER SET OF  
CONNECTOR

RECEIVER SET OF  
CONNECTOR

RECEIVER SET OF  
CONNECTOR

RECEIVER SET OF  
CONNECTOR

RECEIVER SET OF  
CONNECTOR

RECEIVER SET OF  
CONNECTOR

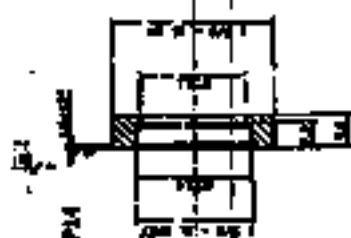
RECEIVER SET OF  
CONNECTOR

RECEIVER SET OF  
CONNECTOR

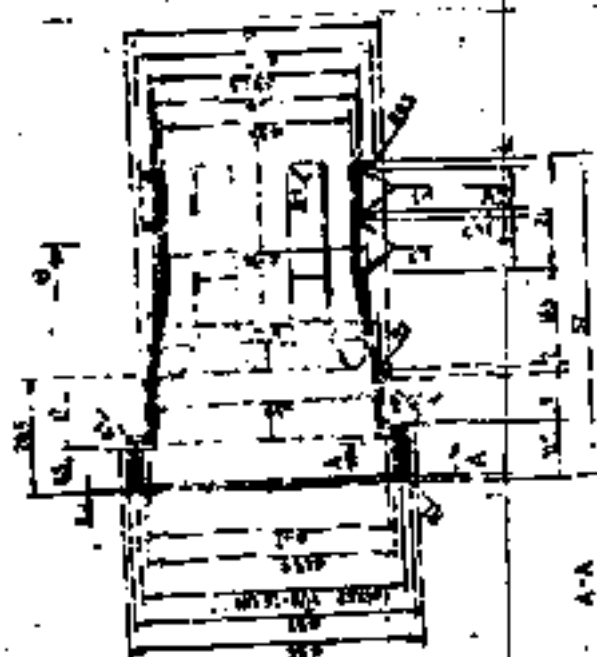
RECEIVER SET OF  
CONNECTOR

RECEIVER SET OF  
CONNECTOR

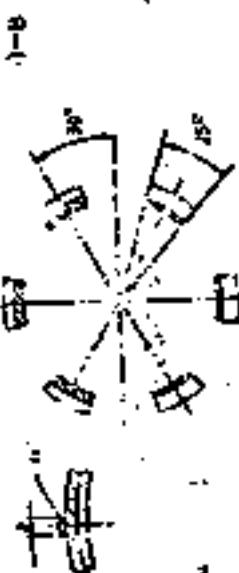
RECEIVER SET OF  
CONNECTOR



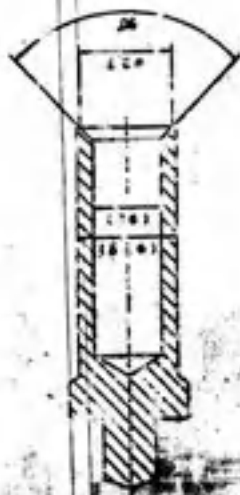
ASSLT. DRG: 53



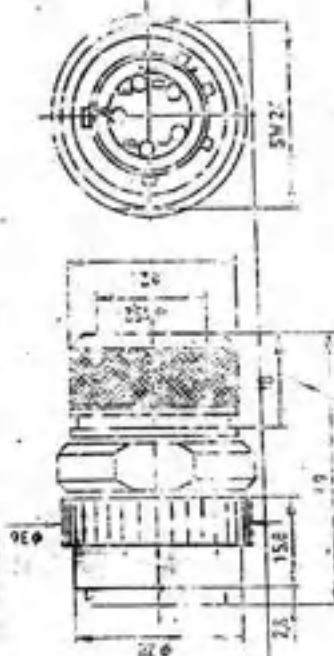
12-11-2: OUT IN C-ONE OF SUPPLY

[illegible]





ASSEMBLY DRG 55



ISSLY. DRG. - 57

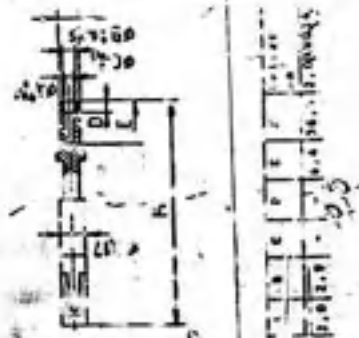


Fig. 2

[illegible]

**WILLIAM H. BROWN**  
 1000 N. 10th St.  
 Minneapolis, MN 55412

[illegible]

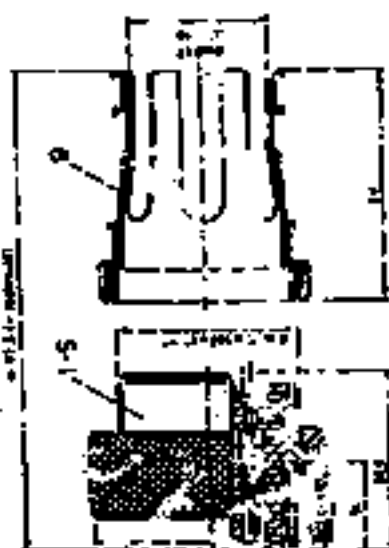


FIG. 4



FIG. 5



FIG. 7

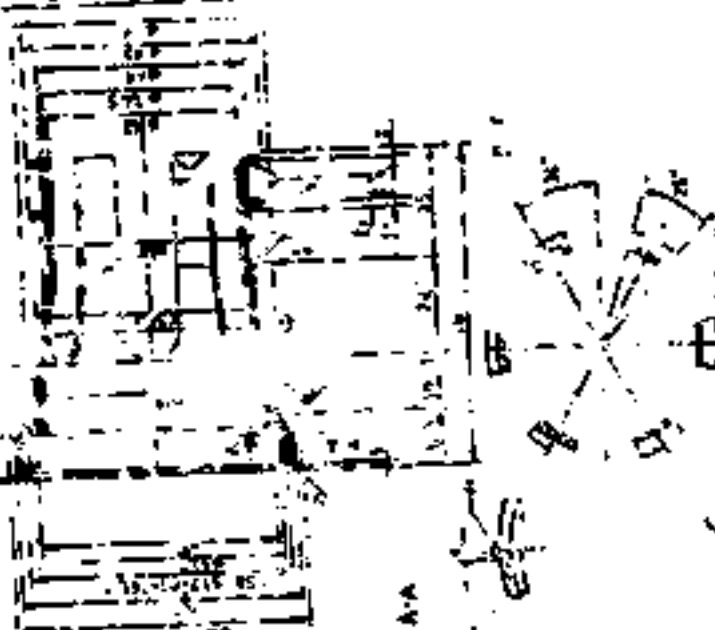


FIG. 8

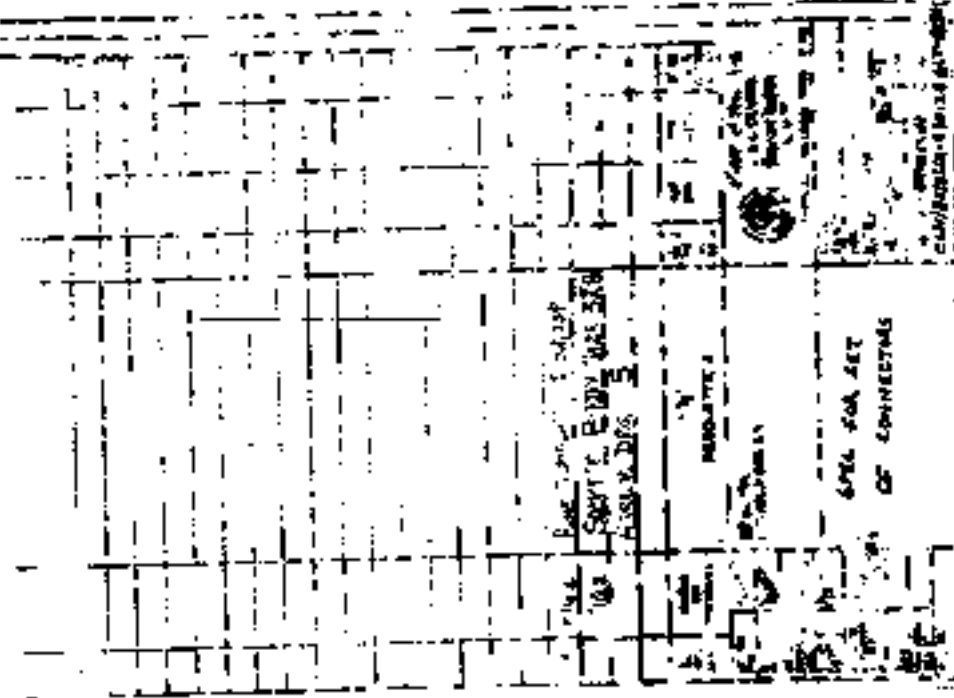
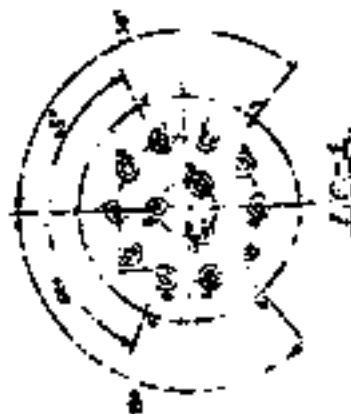
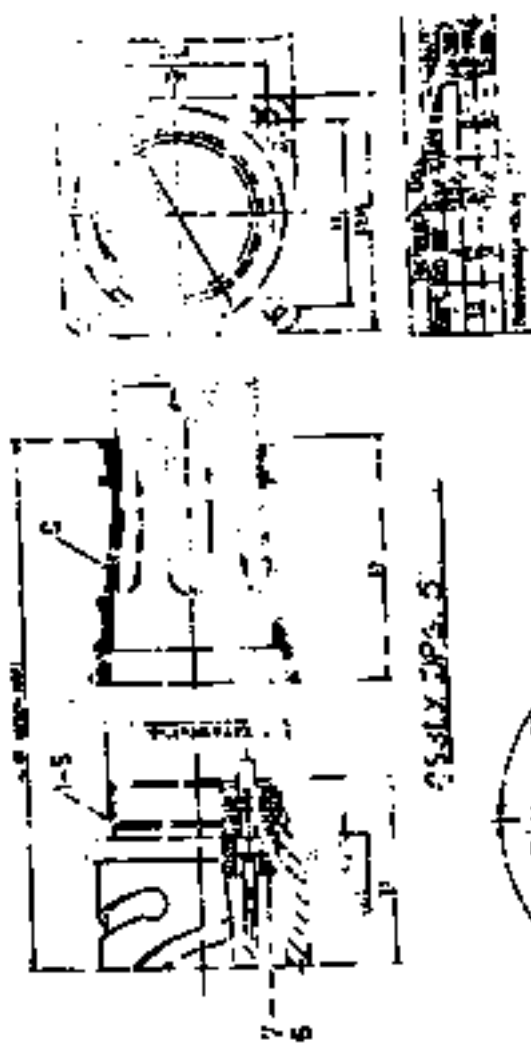


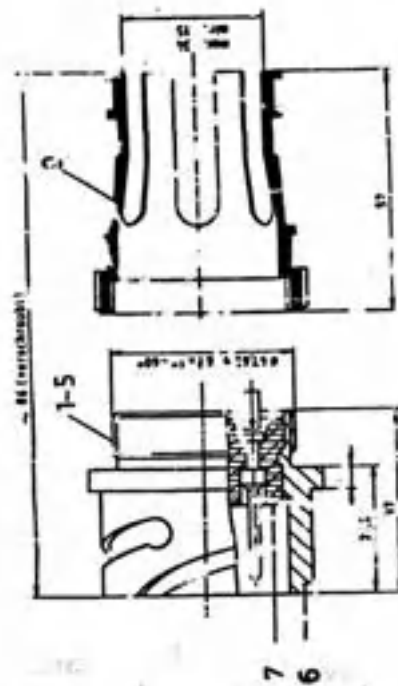
FIG. 9



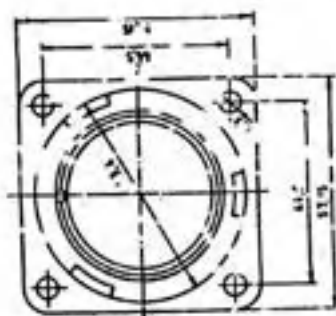
FIG. 10

FIG. 10: A side view diagram of a component, showing a rectangular shape with internal features. It is labeled with 'FIG. 10'.

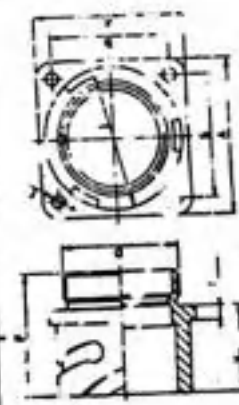
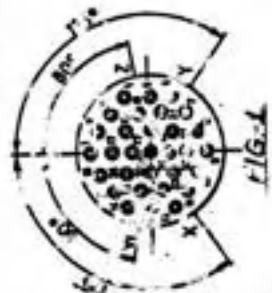




ASSLY DRG. E



ITEM NO.	DESCRIPTION	QTY	UNIT	REMARKS
1	...	...	...	...
2	...	...	...	...
3	...	...	...	...
4	...	...	...	...
5	...	...	...	...
6	...	...	...	...
7	...	...	...	...



ITEM NO.	DESCRIPTION	QTY	UNIT	REMARKS
1	...	...	...	...
2	...	...	...	...
3	...	...	...	...
4	...	...	...	...
5	...	...	...	...
6	...	...	...	...
7	...	...	...	...

FIG. 2

ITEM NO.	DESCRIPTION	QTY	UNIT	REMARKS
1	...	...	...	...
2	...	...	...	...
3	...	...	...	...
4	...	...	...	...
5	...	...	...	...
6	...	...	...	...
7	...	...	...	...

SPEC. FOR SET OF CONNECTOR

DATE: 10/10/2026  
BY: [Signature]  
CHECKED: [Signature]  
APPROVED: [Signature]







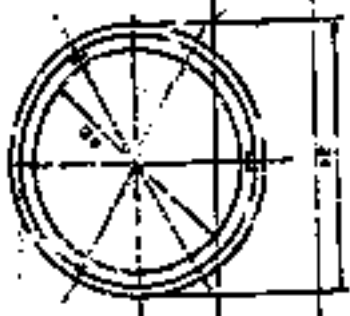


FIG. 2

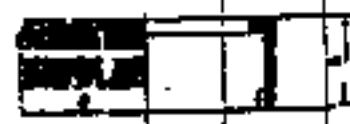


FIG. 4



FIG. 5

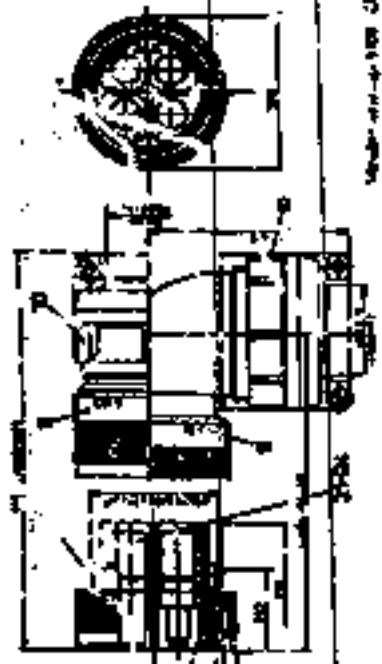


FIG. 6

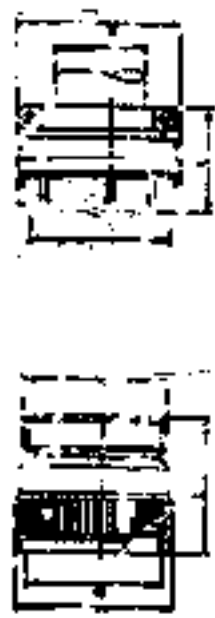


FIG. 7



FIG. 8



FIG. 10

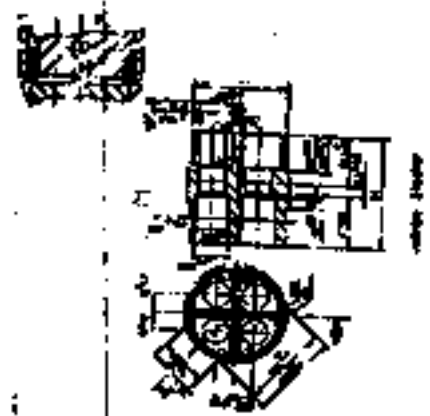


FIG. 11

FIG. NO.	DESCRIPTION	QTY.	UNIT	REMARKS
1	COVER PLATE 5-1/2" DIA.	1	PC	
2	SCREW 1/4" DIA. X 1/2" L.	4	PC	
3	SCREW 1/4" DIA. X 1/2" L.	4	PC	
4	SCREW 1/4" DIA. X 1/2" L.	4	PC	
5	SCREW 1/4" DIA. X 1/2" L.	4	PC	
6	SCREW 1/4" DIA. X 1/2" L.	4	PC	
7	SCREW 1/4" DIA. X 1/2" L.	4	PC	
8	SCREW 1/4" DIA. X 1/2" L.	4	PC	
9	SCREW 1/4" DIA. X 1/2" L.	4	PC	
10	SCREW 1/4" DIA. X 1/2" L.	4	PC	
11	SCREW 1/4" DIA. X 1/2" L.	4	PC	
12	SCREW 1/4" DIA. X 1/2" L.	4	PC	
13	SCREW 1/4" DIA. X 1/2" L.	4	PC	
14	SCREW 1/4" DIA. X 1/2" L.	4	PC	
15	SCREW 1/4" DIA. X 1/2" L.	4	PC	
16	SCREW 1/4" DIA. X 1/2" L.	4	PC	
17	SCREW 1/4" DIA. X 1/2" L.	4	PC	
18	SCREW 1/4" DIA. X 1/2" L.	4	PC	
19	SCREW 1/4" DIA. X 1/2" L.	4	PC	
20	SCREW 1/4" DIA. X 1/2" L.	4	PC	
21	SCREW 1/4" DIA. X 1/2" L.	4	PC	
22	SCREW 1/4" DIA. X 1/2" L.	4	PC	
23	SCREW 1/4" DIA. X 1/2" L.	4	PC	
24	SCREW 1/4" DIA. X 1/2" L.	4	PC	
25	SCREW 1/4" DIA. X 1/2" L.	4	PC	
26	SCREW 1/4" DIA. X 1/2" L.	4	PC	
27	SCREW 1/4" DIA. X 1/2" L.	4	PC	
28	SCREW 1/4" DIA. X 1/2" L.	4	PC	
29	SCREW 1/4" DIA. X 1/2" L.	4	PC	
30	SCREW 1/4" DIA. X 1/2" L.	4	PC	
31	SCREW 1/4" DIA. X 1/2" L.	4	PC	
32	SCREW 1/4" DIA. X 1/2" L.	4	PC	
33	SCREW 1/4" DIA. X 1/2" L.	4	PC	
34	SCREW 1/4" DIA. X 1/2" L.	4	PC	
35	SCREW 1/4" DIA. X 1/2" L.	4	PC	
36	SCREW 1/4" DIA. X 1/2" L.	4	PC	
37	SCREW 1/4" DIA. X 1/2" L.	4	PC	
38	SCREW 1/4" DIA. X 1/2" L.	4	PC	
39	SCREW 1/4" DIA. X 1/2" L.	4	PC	
40	SCREW 1/4" DIA. X 1/2" L.	4	PC	
41	SCREW 1/4" DIA. X 1/2" L.	4	PC	
42	SCREW 1/4" DIA. X 1/2" L.	4	PC	
43	SCREW 1/4" DIA. X 1/2" L.	4	PC	
44	SCREW 1/4" DIA. X 1/2" L.	4	PC	
45	SCREW 1/4" DIA. X 1/2" L.	4	PC	
46	SCREW 1/4" DIA. X 1/2" L.	4	PC	
47	SCREW 1/4" DIA. X 1/2" L.	4	PC	
48	SCREW 1/4" DIA. X 1/2" L.	4	PC	
49	SCREW 1/4" DIA. X 1/2" L.	4	PC	
50	SCREW 1/4" DIA. X 1/2" L.	4	PC	
51	SCREW 1/4" DIA. X 1/2" L.	4	PC	
52	SCREW 1/4" DIA. X 1/2" L.	4	PC	
53	SCREW 1/4" DIA. X 1/2" L.	4	PC	
54	SCREW 1/4" DIA. X 1/2" L.	4	PC	
55	SCREW 1/4" DIA. X 1/2" L.	4	PC	
56	SCREW 1/4" DIA. X 1/2" L.	4	PC	
57	SCREW 1/4" DIA. X 1/2" L.	4	PC	
58	SCREW 1/4" DIA. X 1/2" L.	4	PC	
59	SCREW 1/4" DIA. X 1/2" L.	4	PC	
60	SCREW 1/4" DIA. X 1/2" L.	4	PC	
61	SCREW 1/4" DIA. X 1/2" L.	4	PC	
62	SCREW 1/4" DIA. X 1/2" L.	4	PC	
63	SCREW 1/4" DIA. X 1/2" L.	4	PC	
64	SCREW 1/4" DIA. X 1/2" L.	4	PC	
65	SCREW 1/4" DIA. X 1/2" L.	4	PC	
66	SCREW 1/4" DIA. X 1/2" L.	4	PC	
67	SCREW 1/4" DIA. X 1/2" L.	4	PC	
68	SCREW 1/4" DIA. X 1/2" L.	4	PC	
69	SCREW 1/4" DIA. X 1/2" L.	4	PC	
70	SCREW 1/4" DIA. X 1/2" L.	4	PC	
71	SCREW 1/4" DIA. X 1/2" L.	4	PC	
72	SCREW 1/4" DIA. X 1/2" L.	4	PC	
73	SCREW 1/4" DIA. X 1/2" L.	4	PC	
74	SCREW 1/4" DIA. X 1/2" L.	4	PC	
75	SCREW 1/4" DIA. X 1/2" L.	4	PC	
76	SCREW 1/4" DIA. X 1/2" L.	4	PC	
77	SCREW 1/4" DIA. X 1/2" L.	4	PC	
78	SCREW 1/4" DIA. X 1/2" L.	4	PC	
79	SCREW 1/4" DIA. X 1/2" L.	4	PC	
80	SCREW 1/4" DIA. X 1/2" L.	4	PC	
81	SCREW 1/4" DIA. X 1/2" L.	4	PC	
82	SCREW 1/4" DIA. X 1/2" L.	4	PC	
83	SCREW 1/4" DIA. X 1/2" L.	4	PC	
84	SCREW 1/4" DIA. X 1/2" L.	4	PC	
85	SCREW 1/4" DIA. X 1/2" L.	4	PC	
86	SCREW 1/4" DIA. X 1/2" L.	4	PC	
87	SCREW 1/4" DIA. X 1/2" L.	4	PC	
88	SCREW 1/4" DIA. X 1/2" L.	4	PC	
89	SCREW 1/4" DIA. X 1/2" L.	4	PC	
90	SCREW 1/4" DIA. X 1/2" L.	4	PC	
91	SCREW 1/4" DIA. X 1/2" L.	4	PC	
92	SCREW 1/4" DIA. X 1/2" L.	4	PC	
93	SCREW 1/4" DIA. X 1/2" L.	4	PC	
94	SCREW 1/4" DIA. X 1/2" L.	4	PC	
95	SCREW 1/4" DIA. X 1/2" L.	4	PC	
96	SCREW 1/4" DIA. X 1/2" L.	4	PC	
97	SCREW 1/4" DIA. X 1/2" L.	4	PC	
98	SCREW 1/4" DIA. X 1/2" L.	4	PC	
99	SCREW 1/4" DIA. X 1/2" L.	4	PC	
100	SCREW 1/4" DIA. X 1/2" L.	4	PC	

APPROVED FOR RELEASE

DATE: 10/10/2013

BY: [Signature]

REASON: [Text]

CLASS: [Text]

GROUP: [Text]

EXEMPTED FROM RELEASE

DATE: 10/10/2013

BY: [Signature]

REASON: [Text]

CLASS: [Text]

GROUP: [Text]