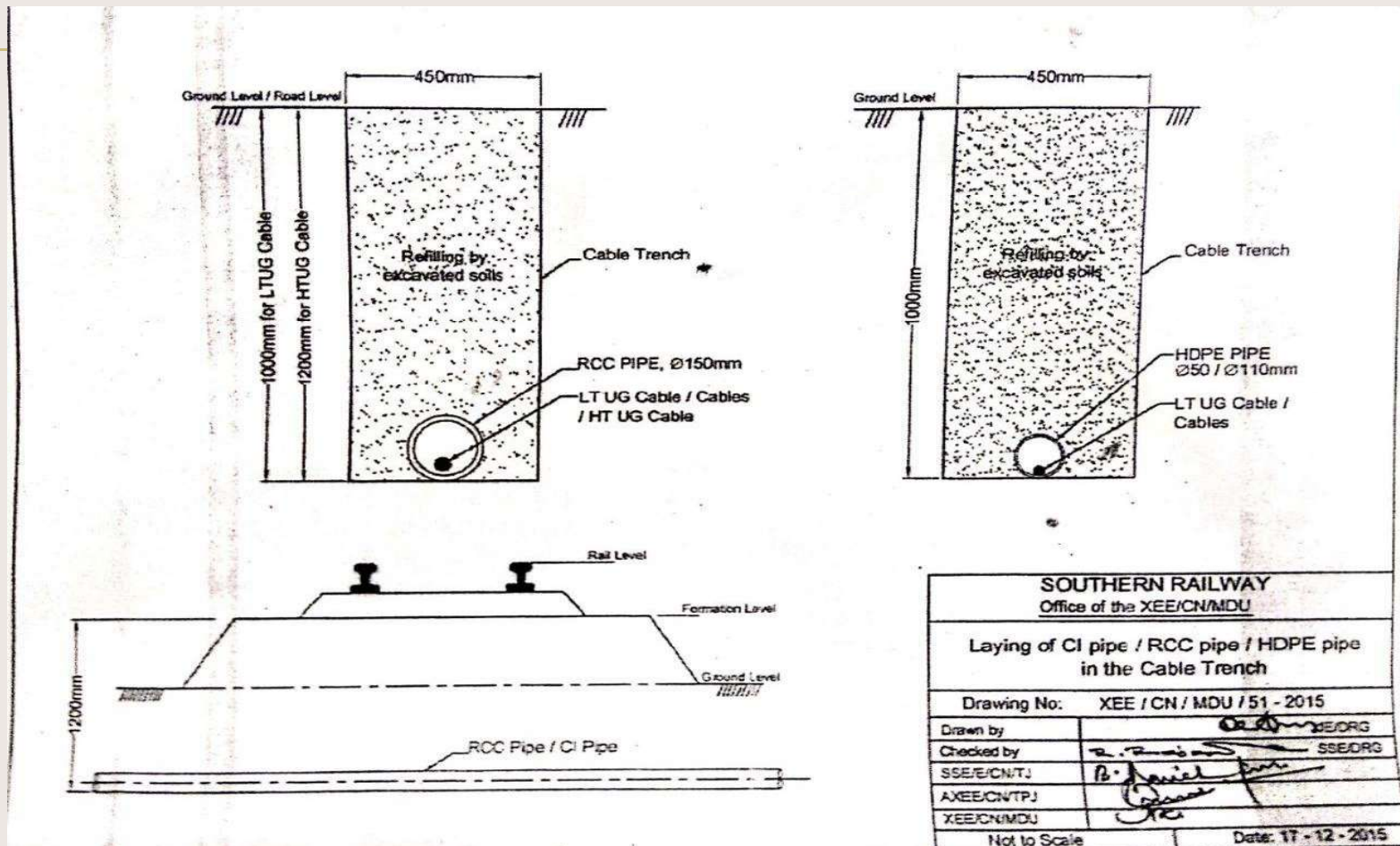
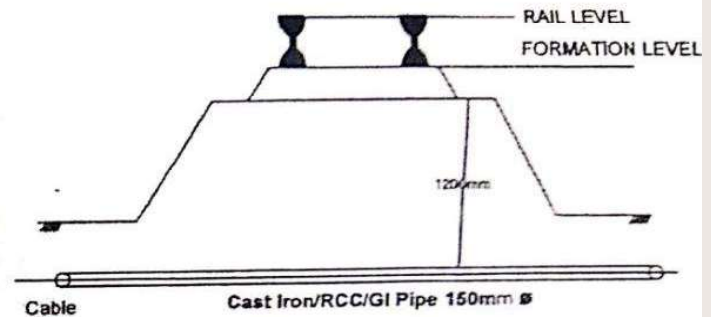
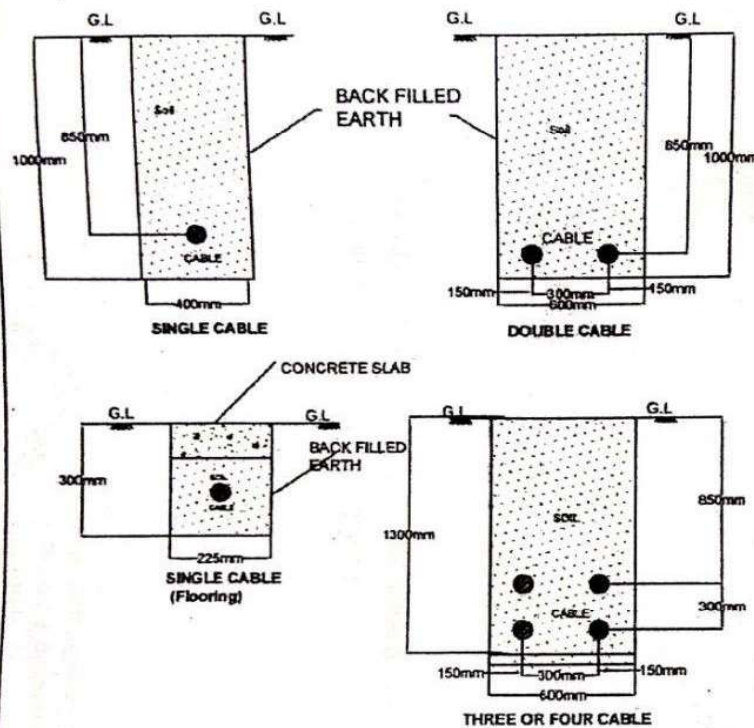


Modified drawing-1



Modified drawing-2

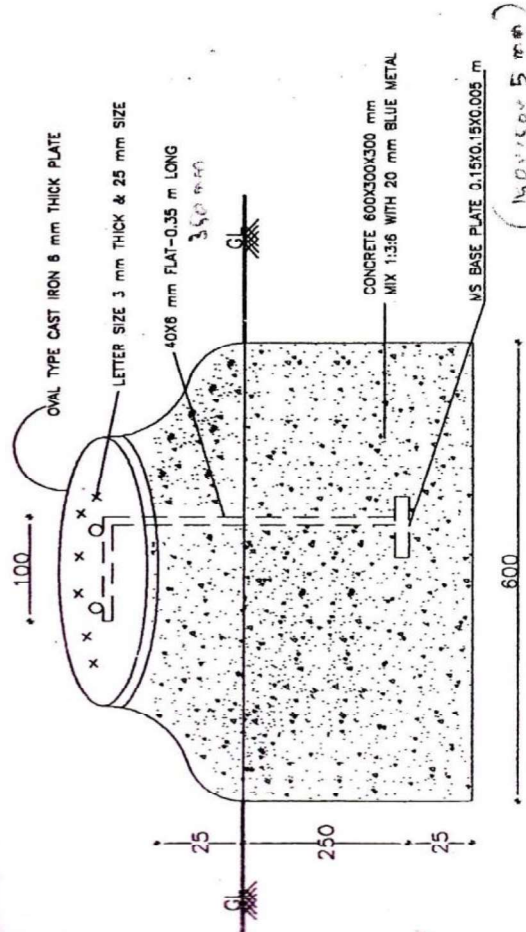


Trench Crossing Across the Railway Track

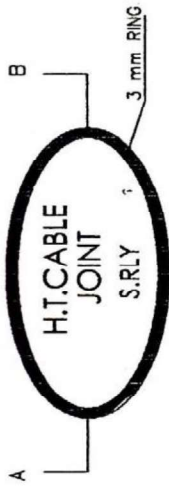
NOTE:

1. Depth of Trench Should be More by 200 mm for HT Cable than that is Indicated in this Drawing
2. For Laying the Cable Refer Drawing No: XEE/CN/MDU/51/2015

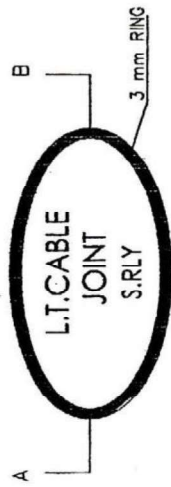
SOUTHERN RAILWAY	
TITLE : EXCAVATION OF TRENCH FOR CABLE LAYING	
Drawing No:	CEE/CN/MS/01-2018
SEE/CN/Drg/MS	<i>[Signature]</i>
SSE/CN/HQ/MS	<i>[Signature]</i> 01/01/18
Dy. CEE/G/CN/MS	<i>[Signature]</i>



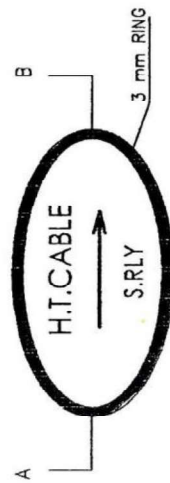
SECTION ON "AB" - ELEVATION



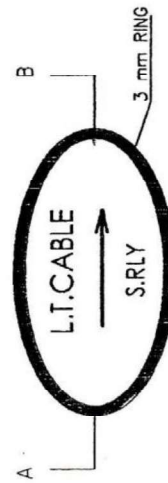
CABLE JOINT INDICATOR (HT)



CABLE JOINT INDICATOR (LT)



CABLE ROUTE INDICATOR (HT)



CABLE ROUTE INDICATOR (LT)

SOUTHERN RAILWAY

TITLE:

HT/LT CABLE ROUTE INDICATOR
WITH CAST IRON PLATE

Dwg. No.

CEE/CN/MS/11-2004

Dr. B. S. S. S.
XEE/CN/MMC

A. N. N. N.
XEE/CN/ERS

XEE/CN/MDU

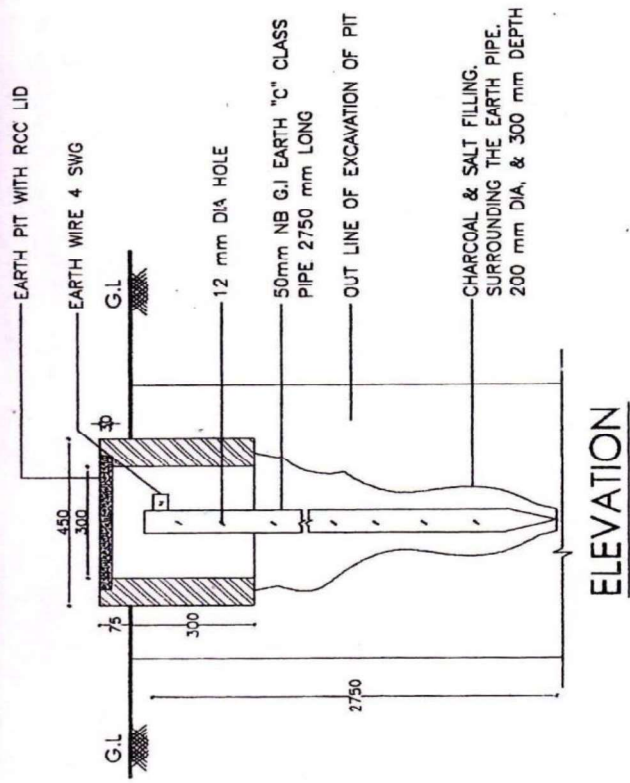
Dy. CEE/G/CN/MS

R. P. S.

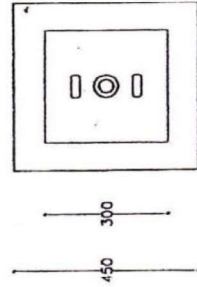
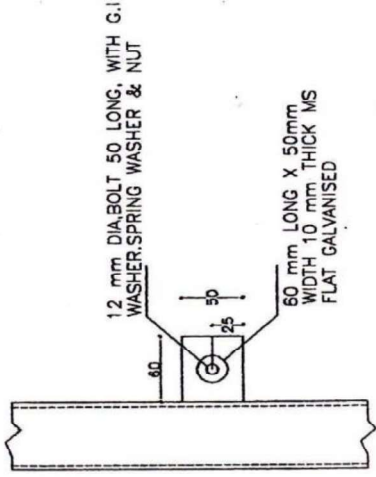
CEE/CN/MS

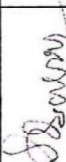


NOTE:-

1. ALL DIMENSIONS ARE IN mm UNLESS STATED OTHERWISE
2. TUBE DIMENSIONS-50 mm NOMINAL BORE "C" CLASS HEAVY DUTY AS PER IS:1239.
3. CHARCOAL & SALT FILLING TO BE IN THE FORM OF A CYLINDER 200 mm DIA. SURROUNDING THE PIPES, 300 mm DEPTH OR THE QUANTITY MENTIONED IN THE SCHEDULE
4. EARTH POT SHALL BE MADE UP OF CEMENT CONCRETE WITH LID/BRICKWORK WALL WITH COVERING RCC SLAB.
5. IF SPECIFIED EARTH RESISTANCE CANNOT BE OBTAINED WITH ONE EARTHING, STATION-EARTHING STATIONS IN MULTIPLE SPACED AT A DISTANCE OF 10M & INTERCONNECTED TOGETHER MAY BE ADOPTED.
6. THIS DWG IS BASED ON RDSO DWG. NO. ET2/OHE/P/7020, ISS CODE FOR EARTHING STATION IS : 3043 AND CEE/MAS DRG.NO : EL/P/TYPE/122
7. ALL MATERIALS INCLUDING CEMENT STEEL, G.I PIPE ETC., SHOULD BE SUPPLIED BY THE CONTRACTOR ONLY.
8. EARTH PIT SIZE IS 0.9X0.9X2.9 m



ELEVATION



SOUTHERN RAILWAY				
TITLE : L.T. EARTHING ARRANGEMENTS				
Dwg. No.	CEE/CN/MS/16-2004			
 XEE/CN/MMC	 XEE/CN/ERS	A. N. Subramanian XEE/CN/MDU		
Dy.CEE/G/CN/MS				
CEE/CN/MS	