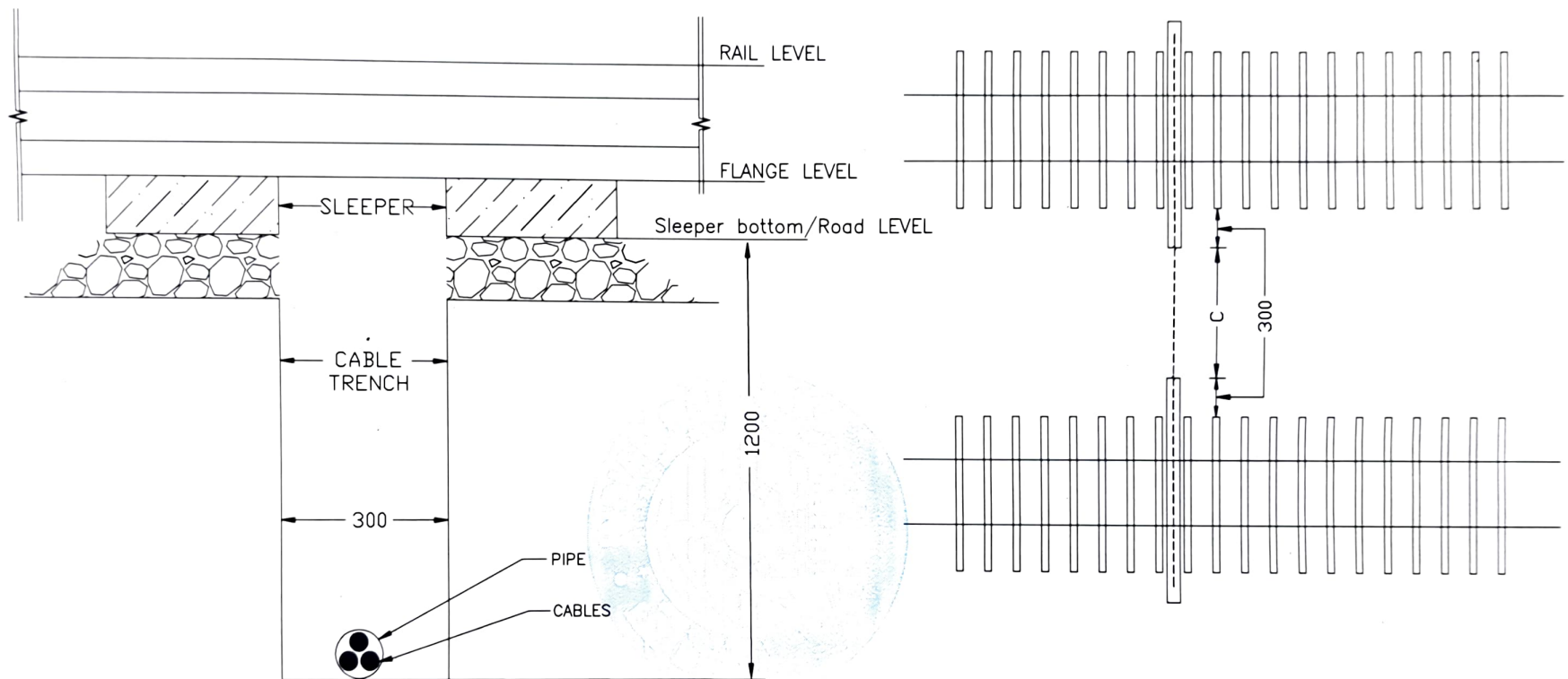


NOTE:

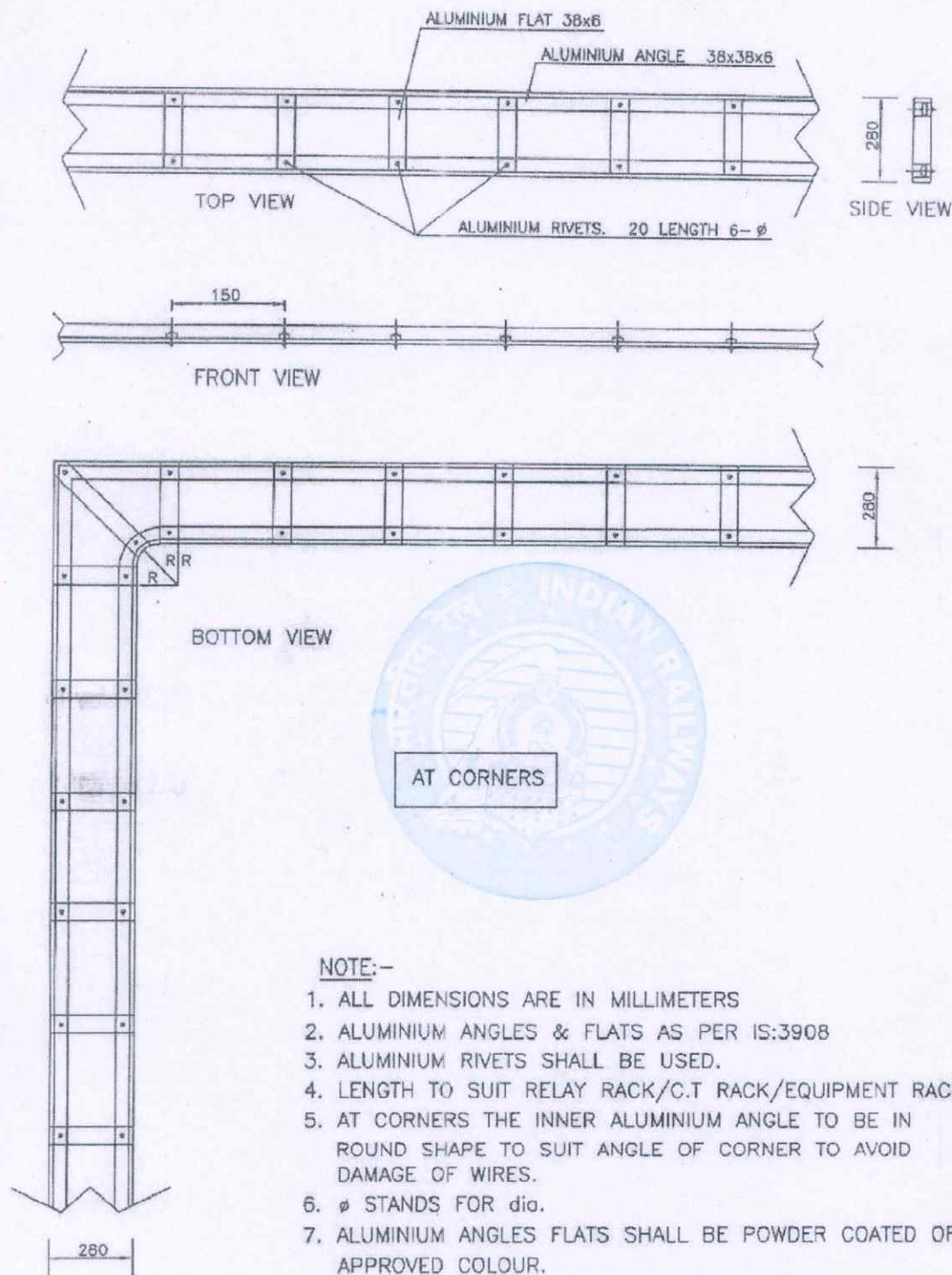
1. THE GAUGE OF THE WIRE MESH SHALL BE 12 SWG.
2. RE PROTECTIVE SCREEN TO BE EARTHED.

REVISION	SIGNAL & TELECOMMUNICATIONS
<div> <div> <div>23-09-22</div> <div>SSE/Drg</div> </div> <div> <div>ASTE</div> </div> </div>	<p>TYPICAL DRAWING FOR RE PROTECTIVE SCREEN</p> <p>(NOT TO SCALE) (ALL DIMENSIONS ARE IN mm)</p>
<div> <div>SSTE/P&P</div> </div>	
<div> <div>Dy.CSTE/PLG</div> </div>	
S.C.RLY Drg No : 5767	

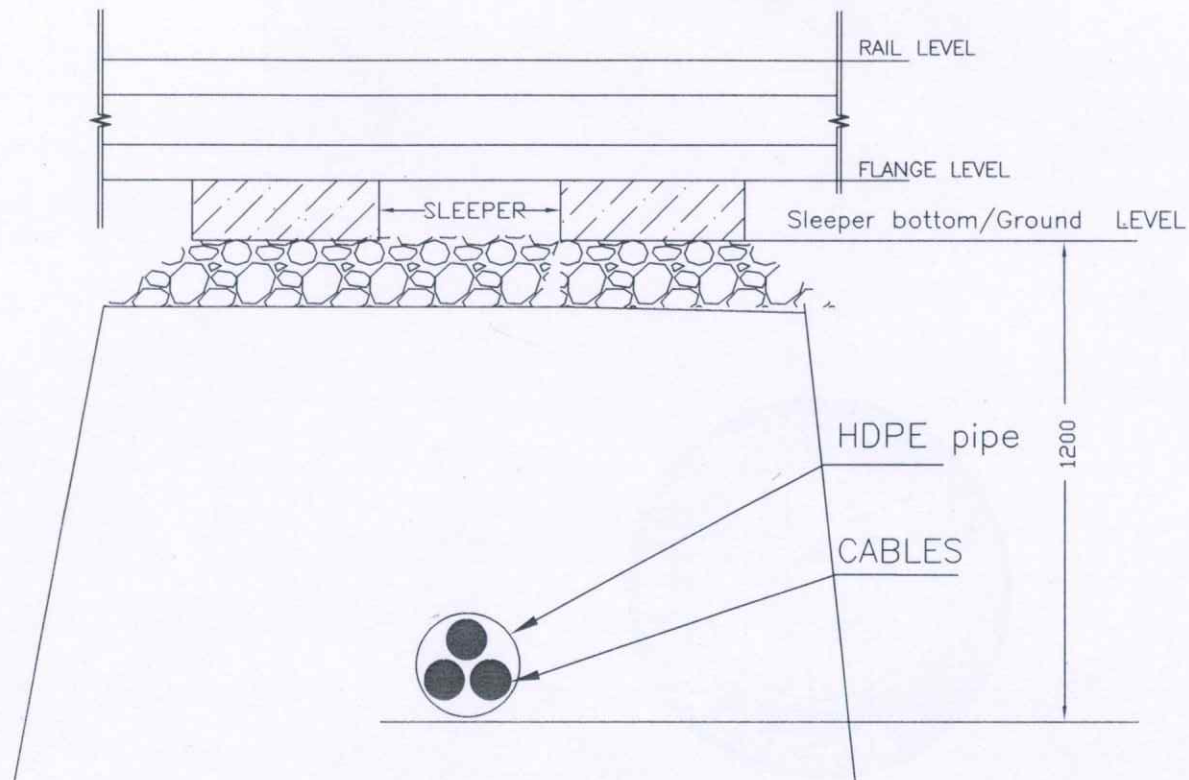


- NOTE: 1. SHOULD CROSS RIGHT ANGLE TO THE TRACK/ROAD
2. THE PIPE USED SHALL BE HDPE/GI/RCC OF SUITABLE SIZE IS SPEC. NOS.
(HDPE PIPE –SPEC NO PE80(IS 4984))
(GI PIPE– MEDIUM CLASS,SPEC NO ISI MARKED 2 IS1239(PART1)/2004 OR LATEST)
(RCC PIPE–SPEC NO IS 458–2003 OR LATEST)
3. THE PIPE SHALL HAVE SUFFICIENT SPACE FOR DRAWING OF TWO MORE CABLES IN FUTURE.
4. SUPERSEDES DRG. No.5768.

—	REVISION	SIGNAL & TELECOMMUNICATIONS
<i>As per 09.12.22</i>	SSE/Drg	TYPICAL DRAWING FOR ARRANGEMENT OF CABLES TRUNKING UNDER ROAD/TRACK CROSSING (NOT TO SCALE) (ALL DIMENSIONS ARE IN mm)
<i>K. N. Adhikari 09.12.22</i>	ASTE	
<i>R. N. 09.12.22</i>	SSTE/P&P	
<i>M. 9.12.22</i>	Dy.CSTE/PLG	S.C.RLY Drg No : 5768A



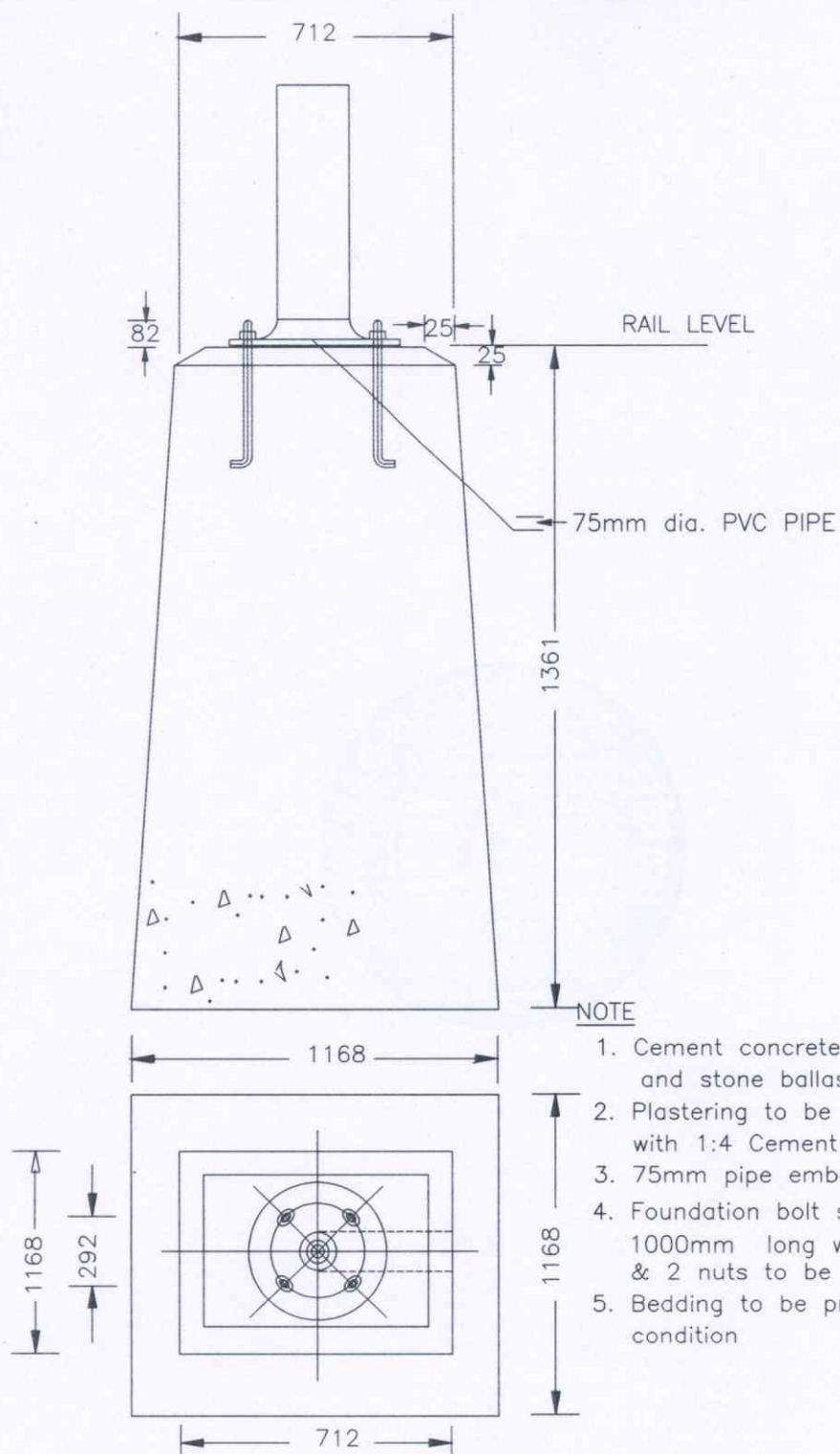
—	REVISION	SIGNAL & TELECOMMUNICATIONS
<i>Aug</i>	SSE/Drg	TYPICAL DRAWING FOR LADDER (NOT TO SCALE) (ALL DIMENSIONS ARE IN mm)
<i>K.N. Singh</i>	ASTE	
<i>RR</i>	SSTE/P&P	
<i>M/</i> <i>23-09-22</i>	Dy.CSTE/PLG	S.C.RLY Drg No : 5769



NOTE:

1. Should cross right angle to the Track/Road..
2. The pipe used shall be HDPE duct of Dia 110mm, PE 80 (IS 4984).
3. Depth of HDPE pipe shall not be less than 1200mm from ground level.

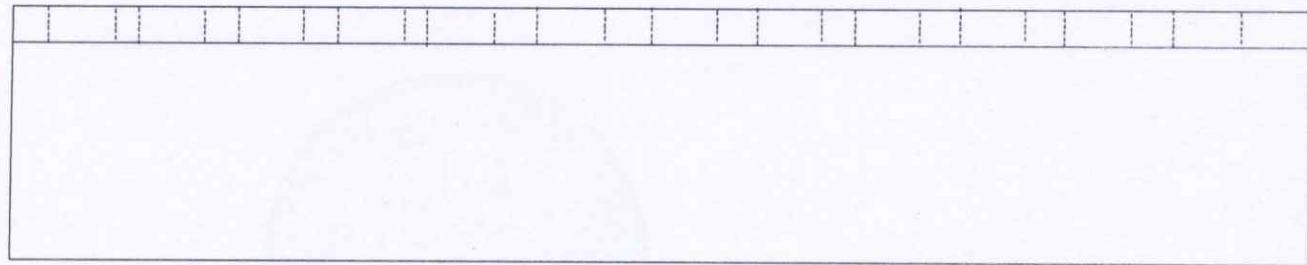
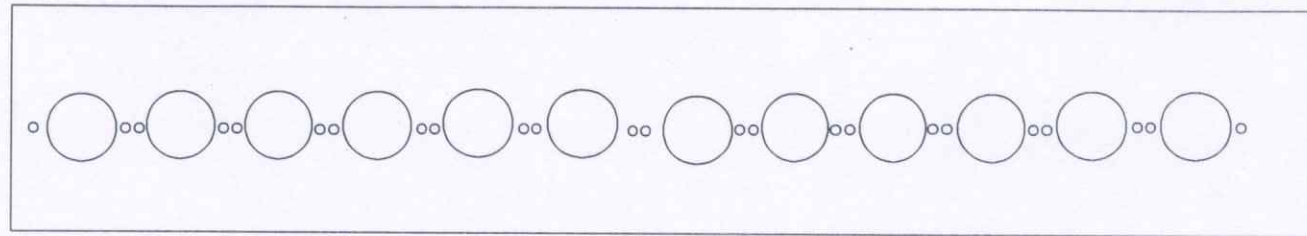
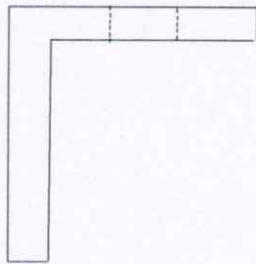
REVISION	SIGNAL & TELECOMMUNICATIONS
<p><i>Done on 15.9.22</i></p> <p><i>RLSS</i></p> <p><i>15.9.22</i></p>	<p>TYPICAL DRAWING FOR HORIZONTAL BORING/ MICRO TUNNELLING</p> <p>(NOT TO SCALE) (ALL DIMENSIONS ARE IN mm)</p>
ASTE	
SSTE/P&P	
Dy.CSTE/PLG	S.C.RLY Drg No : 5770



NOTE

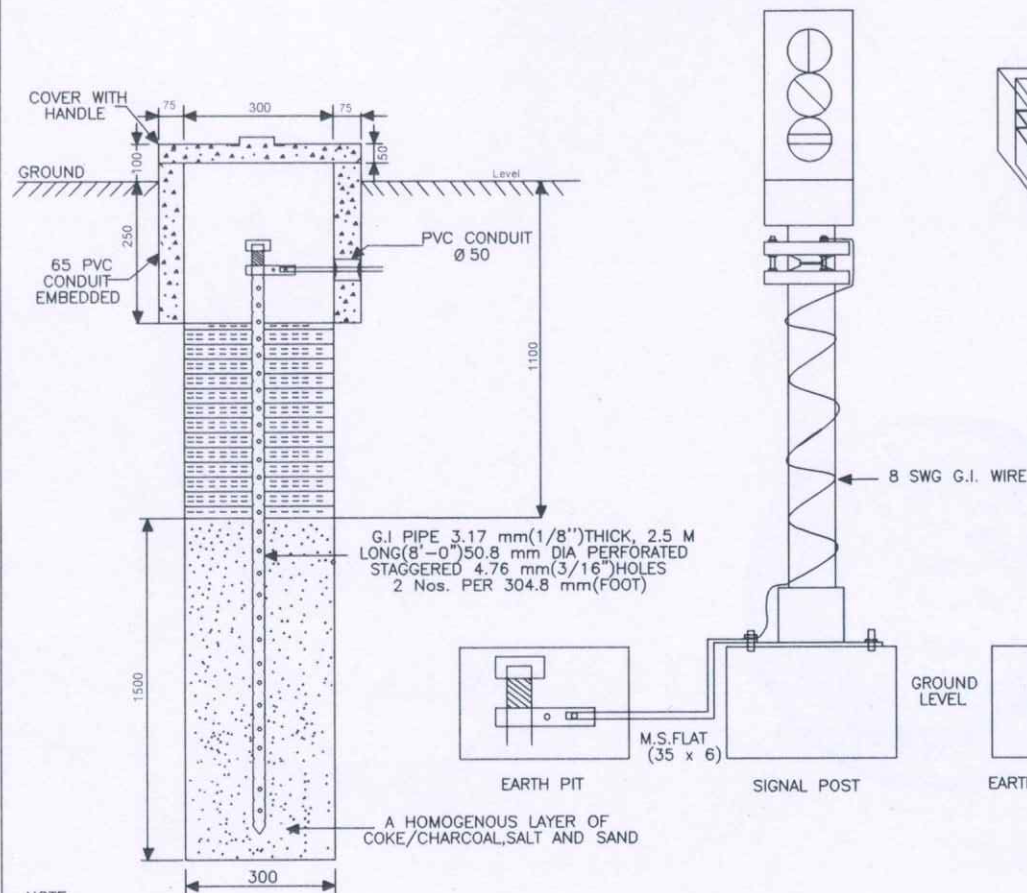
1. Cement concrete in the ratio 1:3:6 and stone ballast of 20x20mm size
2. Plastering to be done to all sides with 1:4 Cement and Sand
3. 75mm pipe embedded during casting
4. Foundation bolt size of 25mm dia 1000mm long with 2 flat washers & 2 nuts to be used.
5. Bedding to be provided based on site condition

REVISION	SIGNAL & TELECOMMUNICATIONS
<div> <div> <div>15/9/22</div> <div>SSE/Drg</div> </div> <div> <div>15.9.22</div> <div>ASTE</div> </div> <div> <div>15.9</div> <div>SSTE/P&P</div> </div> <div> <div>15.9.22</div> <div>Dy.CSTE/PLG</div> </div> </div>	<p>TYPICAL DRAWING FOR MAIN SIGNAL FOUNDATION</p> <p>(NOT TO SCALE) (ALL DIMENSIONS ARE IN mm)</p> <p>S.C.RLY Drg No : 5772</p>

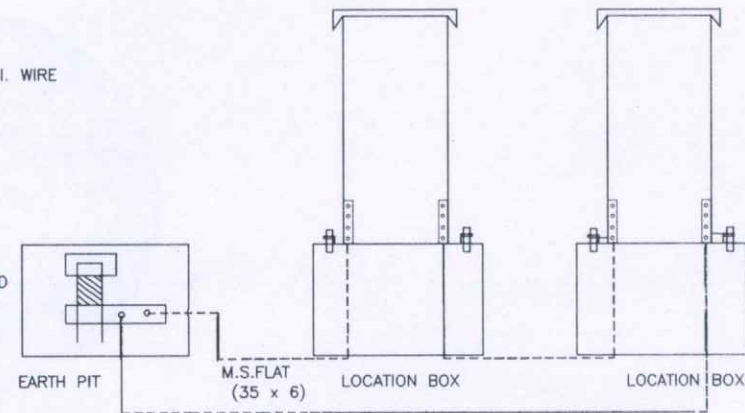
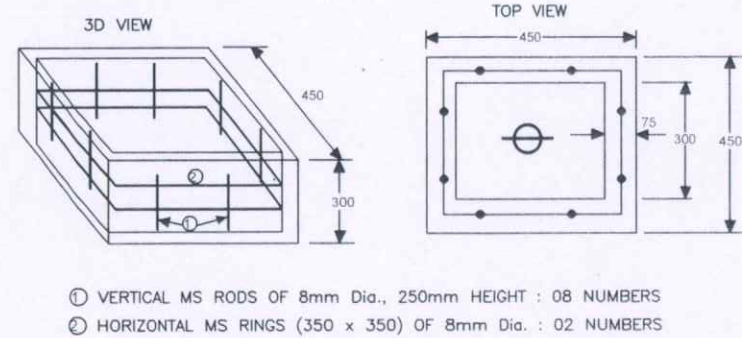


1. The length of Gland plate is 940 mm with 40X40X5 mm angular size.
2. 12 nos of Holes of size 25 mm shall be drilled in the angular.
3. suitable sized holes to fix washer shall be drilled on both sides of cable entry hole
4. The gland plate shall be supplied with washer with suitable holes,screw&bolt to fix cable armours
5. The gland plate shall be of M.S

—	REVISION	SIGNAL & TELECOMMUNICATIONS
<i>Deen</i> <i>15/9/22</i>	SSE/Drg	TYPICAL DRAWING FOR GLAND PLATE FOR FULL LOCATION BOX (NOT TO SCALE) (ALL DIMENSIONS ARE IN mm)
<i>Kumar</i> <i>15.9.22</i>	ASTE	
<i>RL</i> <i>15.9</i>	SSTE/P&P	
<i>M/</i> <i>15.9.22</i>	Dy.CSTE/PLG	S.C.RLY Drg No : 5774



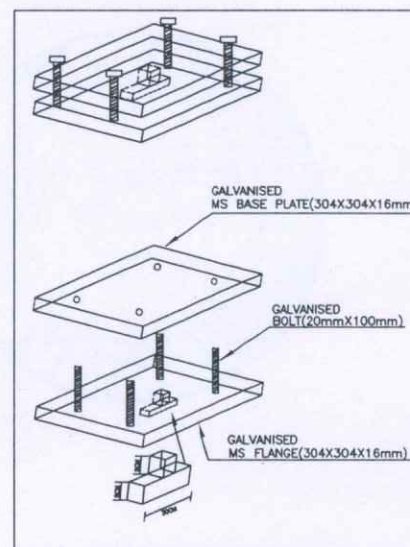
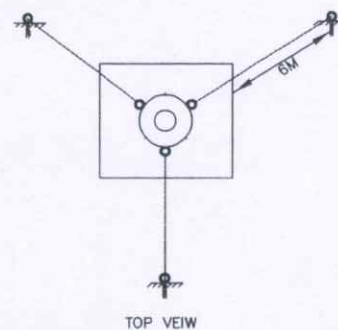
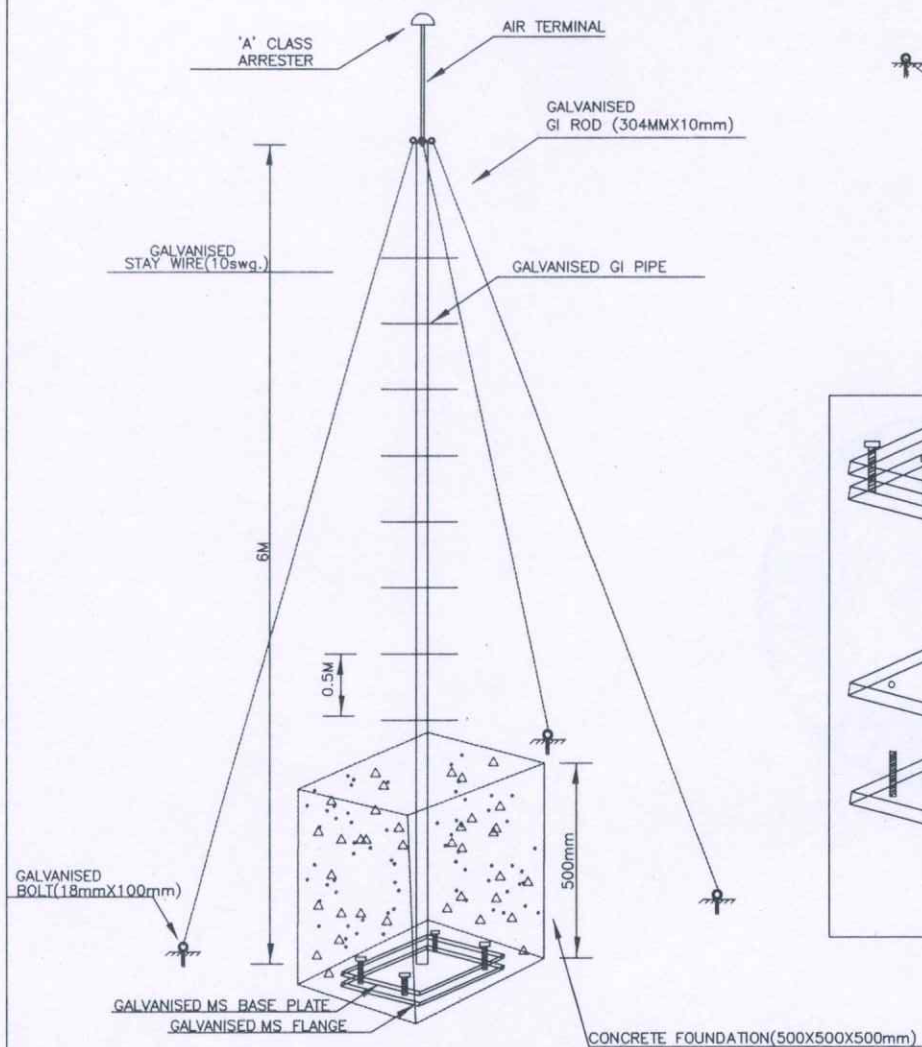
REINFORCEMENT DETAILS FOR CONCRETE CHAMBER



NOTE:

1. ALL MULTIPLE UNITS,CALLING-ON, SHUNT,ROUTE & SCREENS SHALL BE LOOPED TOGETHER.
2. CODE OF PRACTICE FOR EARTHING AS PER IS:3043
3. CONCRETE OF M25 GRADE 1:2:4 WITH MAXIMUM SIZE OF STONE CHIPS OF 10mm.
4. M.S. STRIP, WITH HOLES OF SUITABLE SIZE, SHALL BE FIXED INSIDE OF LOCATION BOX FOR EARTHING CONNECTIONS.

REVISION	SIGNAL & TELECOMMUNICATIONS
SSE/Drg	TYPICAL DRAWING FOR EARTHING ARRANGEMENT FOR SIGNALS AND LOCATION BOXES (NOT TO SCALE) (ALL DIMENSIONS ARE IN mm)
ASTE	
SSTE/P&P	
Dy.CSTE/PLG	S.C.RLY Drg No : 5775

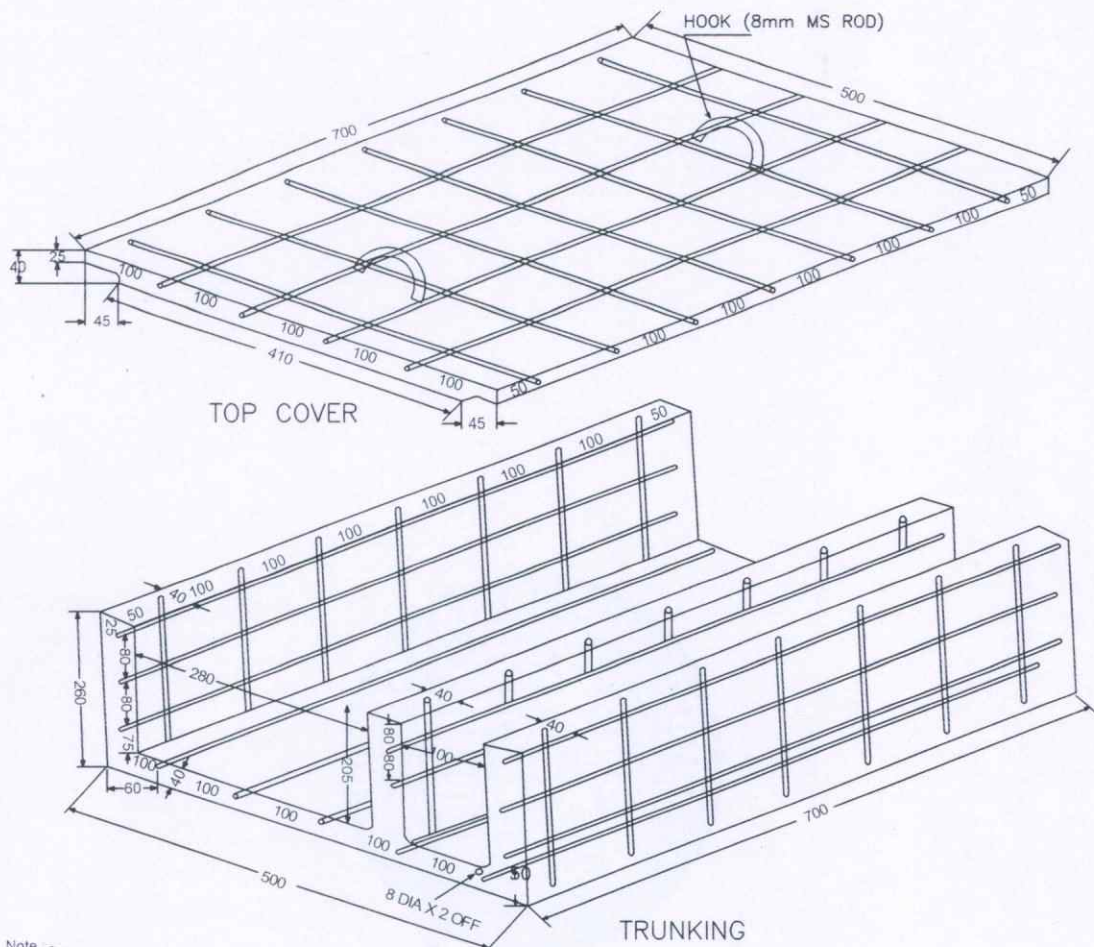


NOTE:

- 1) HEAVY DUTY 50mm G.I. PIPE AS PER IS SPECIFICATION IS:12399 (PART-1) 1990 SHALL BE USED
- 2) GALVANISED MS BASE PLATE OF 304X304mm AND THICKNESS 16mm SHALL BE USED
- 3) CONCRETE FOUNDATION :- 500X500X500mm (CONCRETE IN RATIO OF 1:3:6)
- 4) STAY WIRE OF GALVANISED STEEL AS PER SPECIFICATION (IS:2141:2002) SHALL BE USED
- 5) GALVANISED MS FLANGE TO BE FIXED WHILE CASTING SLAB.

REVISION	SIGNAL & TELECOMMUNICATIONS
<div>15/9/22</div> <div>15.9.22</div> <div>15.9.22</div> <div>15.9.22</div>	TYPICAL DRAWING FOR CLASS 'A' LIGHTNING PROTECTION (NOT TO SCALE) (ALL DIMENSIONS ARE IN mm)
Dy.CSTE/PLG	S.C.RLY Drg No : 5777

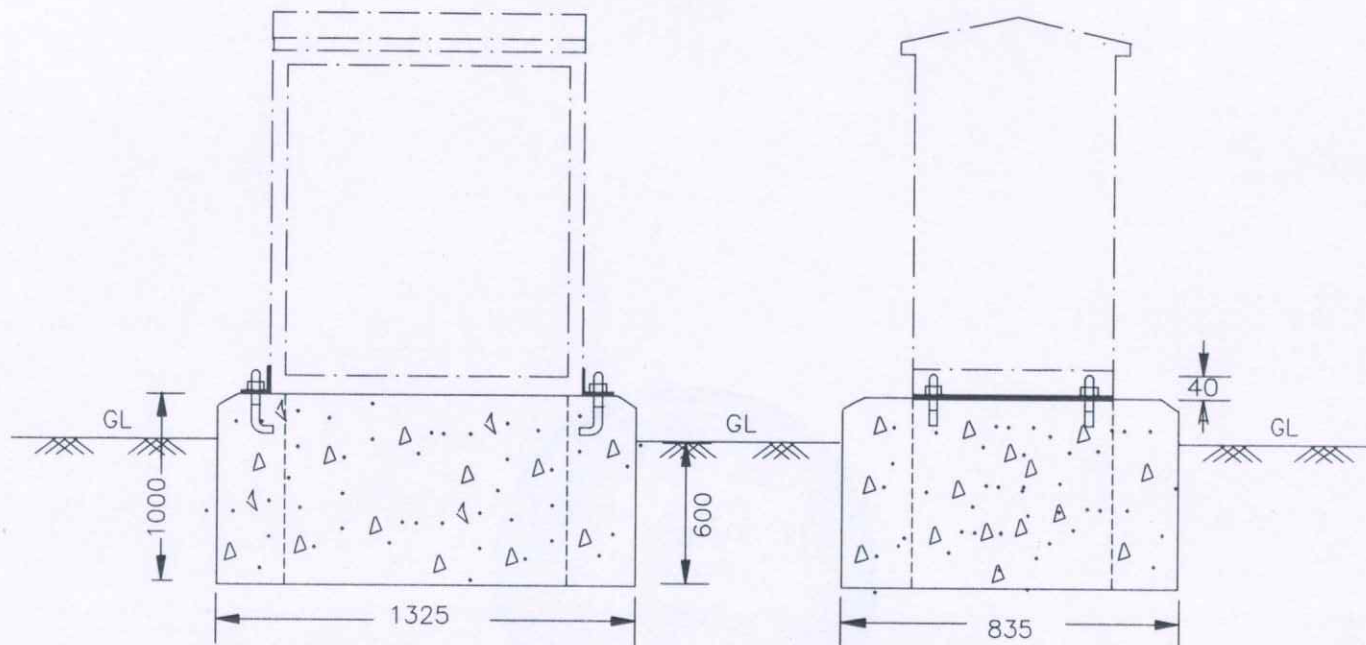
DRAWING FOR RCC DUCT 500 mm



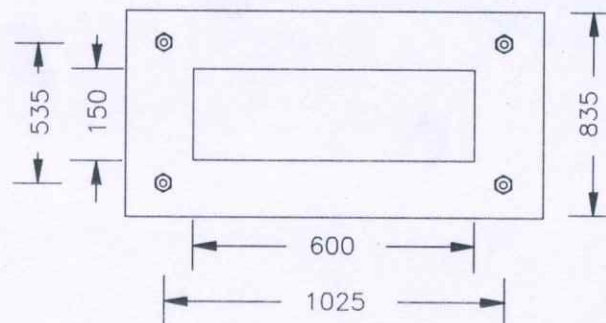
Note :-

1. TRUNKING AND CAPPING ARE SUITABLE FOR BURYING ADJACENT TO THE TRACKS IN TRENCHES WITH MINIMUM DEPTH OF 600mm.
2. THE TRUNKING TO BE ALLIGNED BY PUTTING AN MS ROD OF 8mm DIA. x 100mm. LONG AS PER IS : 432 PART (1) -1982 IN THE TWO HOLES PROVIDED.
3. 6.0 mm DIA. HIGH STRENGTH DEFORMED STEEL BARS CONFORMING TO IS : 11786 TO BE USED FOR REINFORCEMENT.
4. M-25 GRADE OF CONCRETE TO BE USED CONFORMING TO IS :10262 -1982 AND IS : 456 - 2000 - 10 mm SIZE COARSE AGGREGATE TO BE USED .
5. OPC OF 43 GRADE TO BE USED CONFORMING TO IS : 8112 - 1989.
6. THE ACCEPTANCE TEST SHALL BE CONDUCTED IN A RECOGNISED LABORATORY AND THE COST OF THE TEST AS CHARGED BY THE LABORATORY SHALL BE BORNE BY THE CONTRACTOR.
7. CURING SHALL BE DONE AS PER THE IS : 456 - 2000.
8. DUCT MAY BE IN SITU OR FACTORY MADE.
9. ALL DIMENSIONS ARE IN MILLIMETER.
10. ONE HOLE EACH OF 8mm DIA & 50mm DEPTH SHALL BE PROVIDED ON ALL FOUR SIDES AT A DISTANCE OF 150mm FROM THE EDGE IN THE BASE.

	REVISION	SIGNAL & TELECOMMUNICATIONS
<i>[Signature]</i>	SSE/Drg	<p>TYPICAL DRAWING FOR RCC CABLE DUCT</p> <p>(NOT TO SCALE) (ALL DIMENSIONS ARE IN mm)</p>
<i>[Signature]</i>	ASTE	
<i>[Signature]</i>	SSTE/P&P	
<i>[Signature]</i>	Dy.CSTE/PLG	
		S.C.RLY Drg No : 5778



FRONT ELEVATION

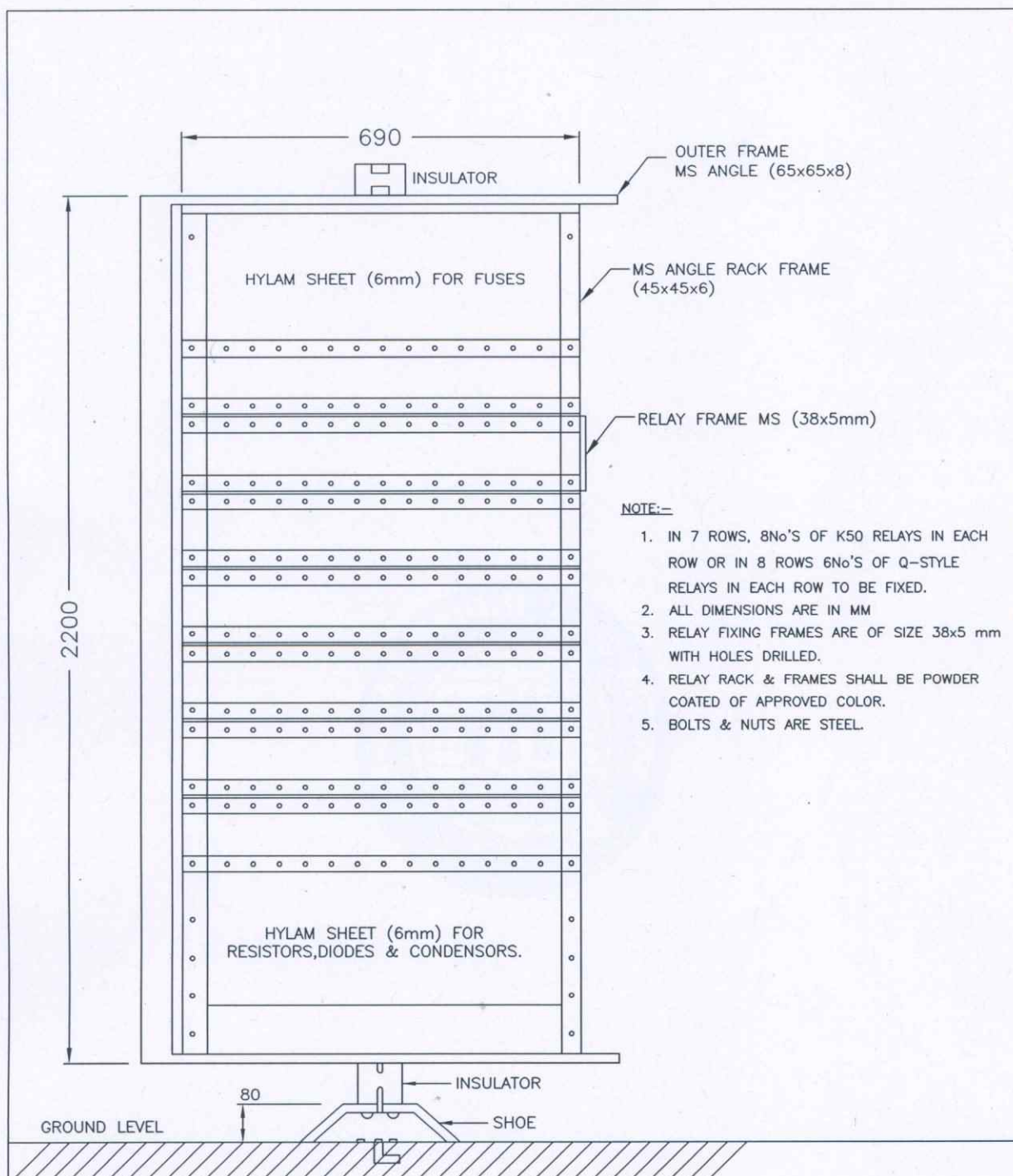


PLAN

NOTE

- 1 . The Cement ,Sand, Ballast shall be in the proportion of 1:3:6
- 2 . Curing shall be not less than 7 days
- 3 . Ballast size 20x20 mm
- 4 . On uneven surface pitching shall be done as per engg. at site

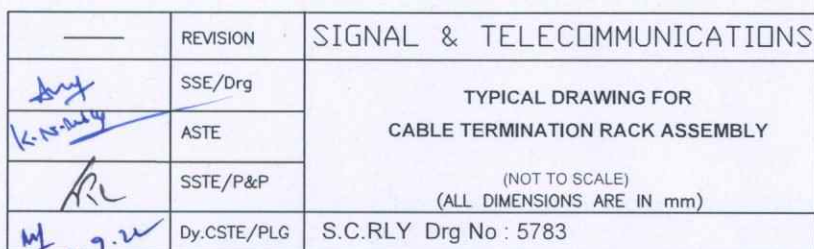
REVISION	SIGNAL & TELECOMMUNICATIONS
SSE/Drg	<p>TYPICAL DRAWING FOR FOUNDATION FOR LOCATION BOX (FULL BOX)</p> <p>(NOT TO SCALE) (ALL DIMENSIONS ARE IN mm)</p>
ASTE	
SSTE/P&P	
Dy.CSTE/PLG	S.C.RLY Drg No :5781



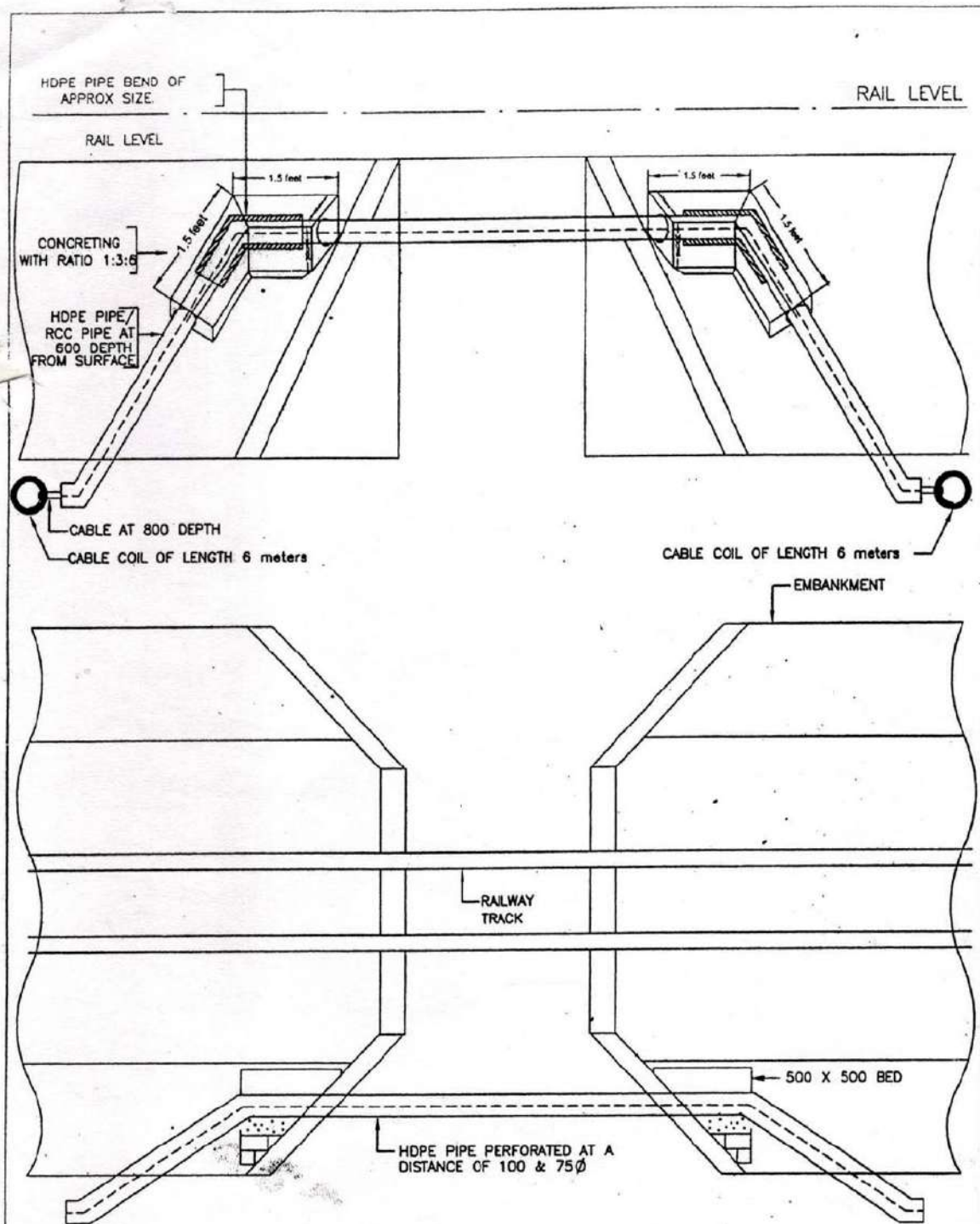
NOTE:-

1. IN 7 ROWS, 8No'S OF K50 RELAYS IN EACH ROW OR IN 8 ROWS 6No'S OF Q-STYLE RELAYS IN EACH ROW TO BE FIXED.
2. ALL DIMENSIONS ARE IN MM
3. RELAY FIXING FRAMES ARE OF SIZE 38x5 mm WITH HOLES DRILLED.
4. RELAY RACK & FRAMES SHALL BE POWDER COATED OF APPROVED COLOR.
5. BOLTS & NUTS ARE STEEL.

—	REVISION	SIGNAL & TELECOMMUNICATIONS
<i>Any</i>	SSE/Drg	TYPICAL DRAWING FOR RELAY RACK ASSEMBLY (NOT TO SCALE) (ALL DIMENSIONS ARE IN mm)
<i>Kund</i>	ASTE	
<i>RL</i>	SSTE/P&P	
<i>MP</i>	Dy.CSTE/PLG	
23-9-24		S.C.RLY Drg No : 5782



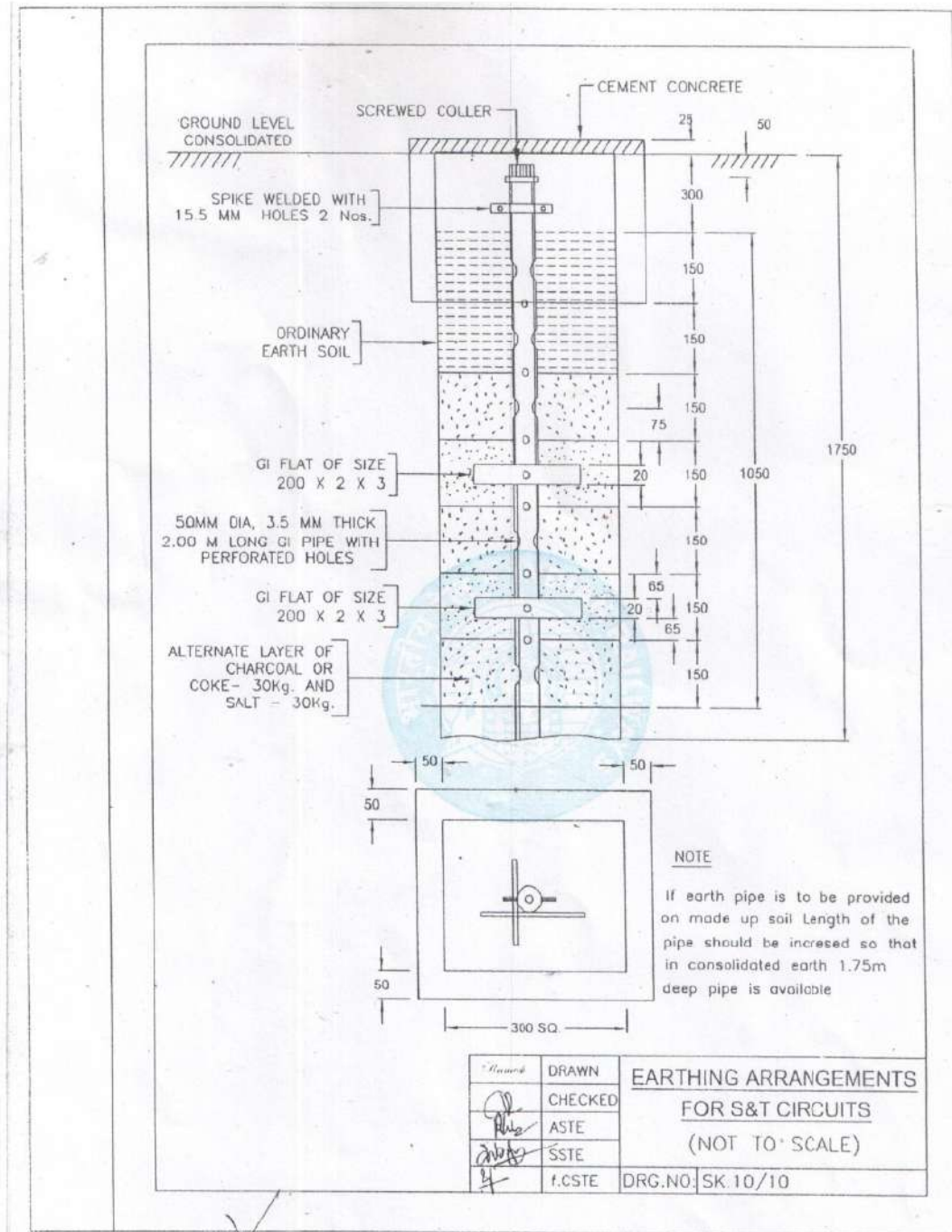
249

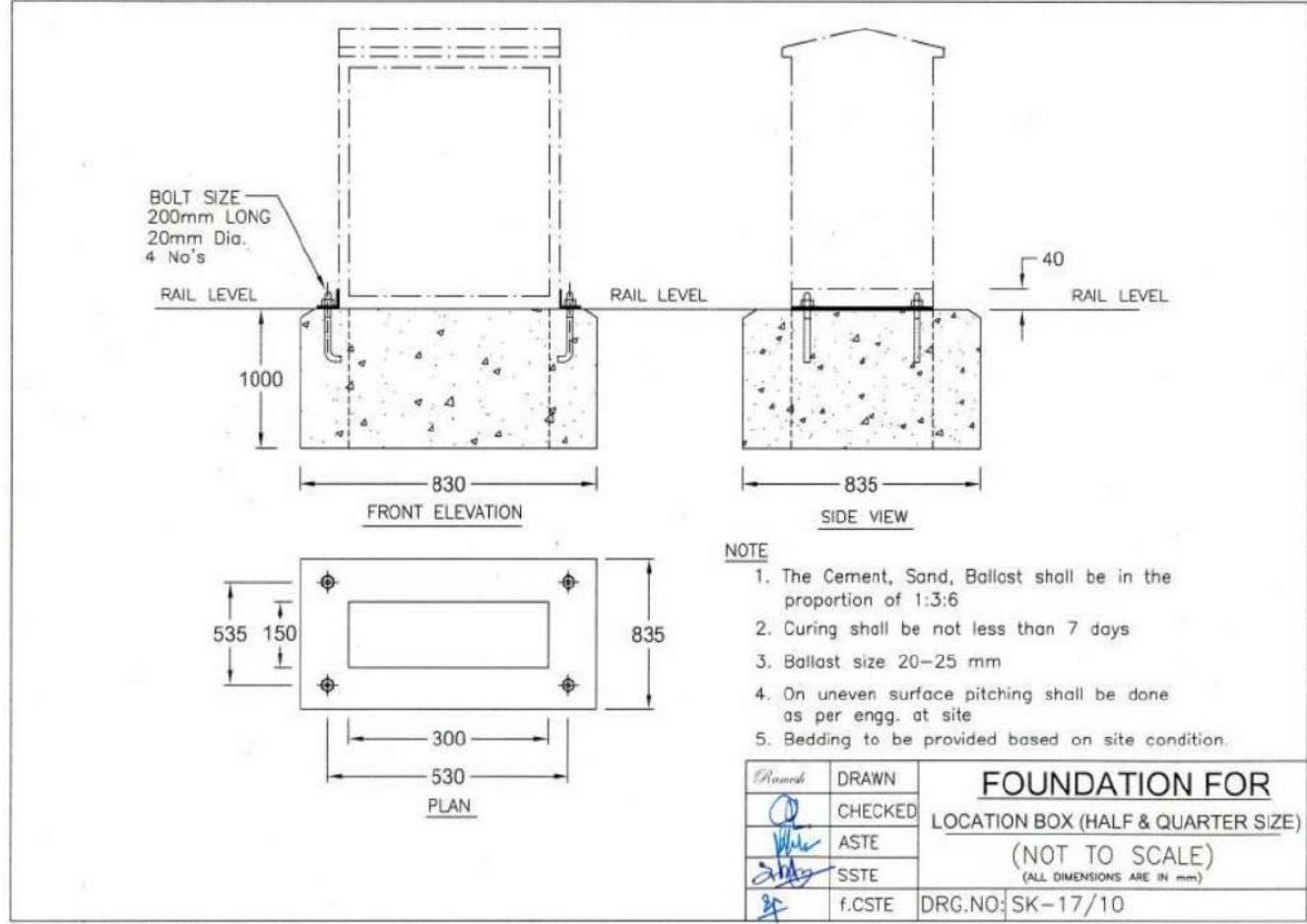


(ALL DIMENSIONS ARE IN mm).

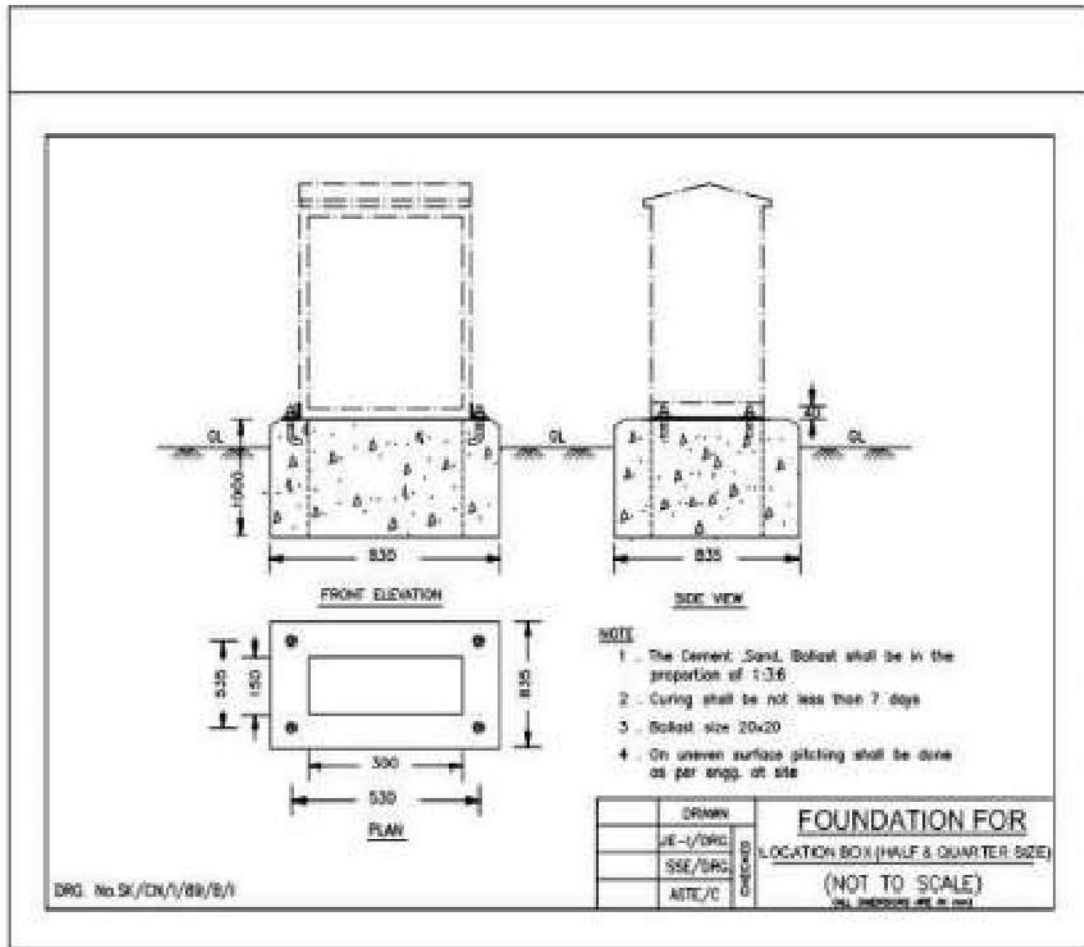
	<i>Ramoh</i>	DRAWN	G.I.PIPES ON CULVERTS (NOT TO SCALE)
	<i>[Signature]</i>	CHECKED	
	<i>[Signature]</i>	ASTE	
	<i>[Signature]</i>	SSTE	
	<i>[Signature]</i>	f.CSTE	
DRG.NO			SK.15/11

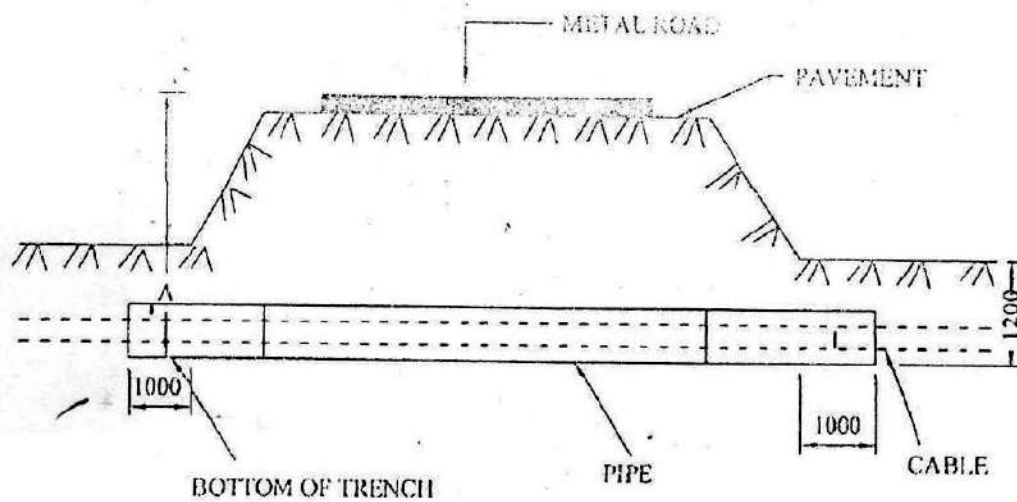
ANNEXURE-7





ANNEXURE-7



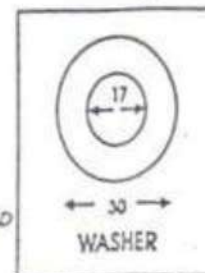
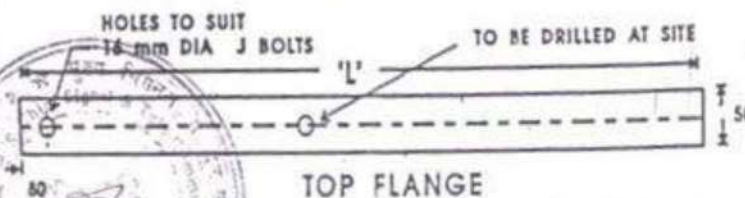
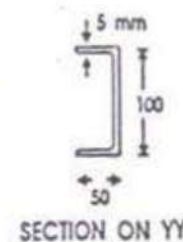
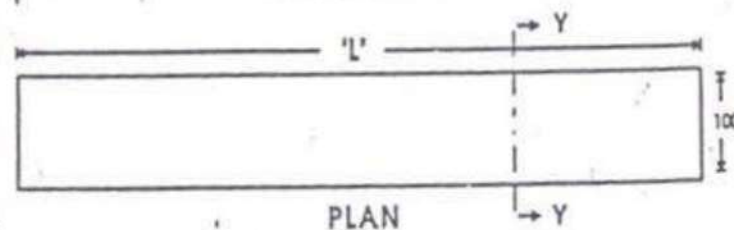
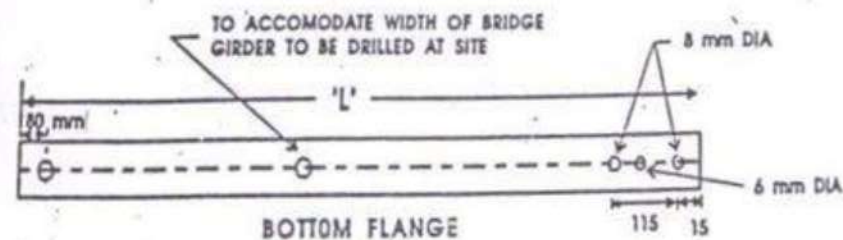


NOTE:-

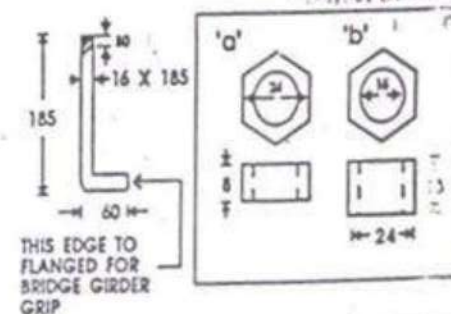
ALL DIMENSIONS ARE IN MILLIMETER.

CHECKED BY	JE/SE/SSE	ROAD CROSSINGS	SDO/CABLE LAYING/010
APPROVED BY	ADE	R. D. S. O.	DATE :- 31-10-2011
NOT TO SCALE			

4



SI	NAME	SIZE	QTY
1	CHANNEL	L X 100 X 50	1
2	J BOLTS	16 X 185	2
3	a - NUTS	16 mm DIA.	2
	b - NUTS	16 mm DIA.	2
4	SPRING WASHER	17 mm DIA.	2



LENGTH OF CHANNEL WILL BE DECIDED
ACCORDING TO WIDTH BG. GIRDER BY
ENGINEER IN CHARGE.

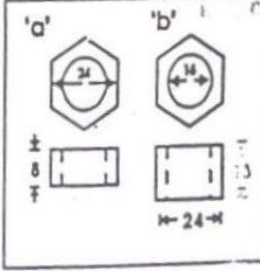
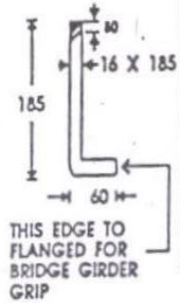
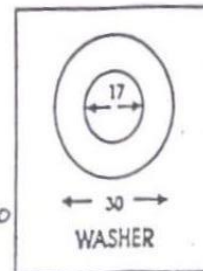
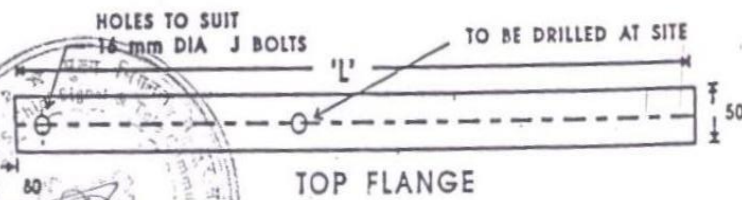
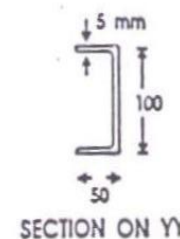
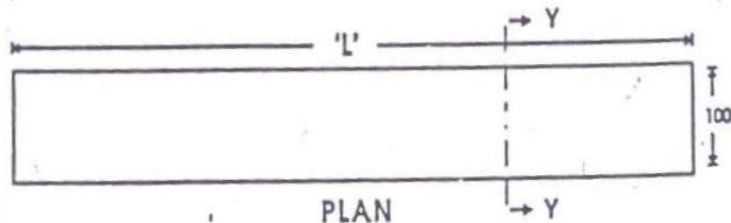
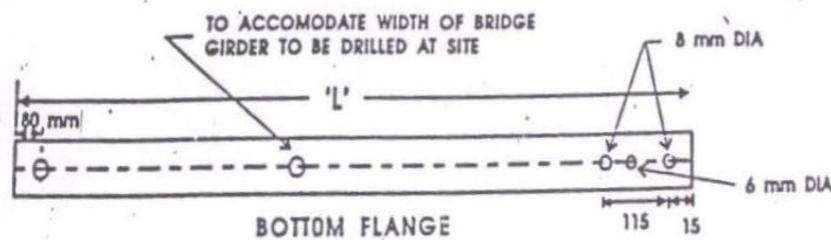
WEIGHT OF CHANNEL 9.2 Kg./ PER METER
APPROX.

CHANNEL TO BE SUPPLIED WITH 2 COATS
OF PRIMER REDOXIDE.

AN ARROW TO BE PUNCHED ON THE TOP OF
'J' BOLT TO INDICATE DIRECTION OF BEND.

TRUE COPY
SSTE/PE/D/CORE/ALD

	DY. CSTE	DRN	MILD STEEL CHANNEL FOR TROUGH FIXING	DRG. NO. S&T / RE / 78 / 2 / 76
	DSTE	TCD		PG. 1 of 2
42/12/1	CTI	CHD	RAILWAY ELECTRIFICATION	DL 20-5-82
			ALL DIMENTIONS IN MILIMETER	NOT TO SCALE



SI	NAME	SIZE	QTY
1	CHANNEL	L X 100 X 50	1
2	J BOLTS	16 X 185	2
3	a - NUTS	16 mm DIA.	2
	b - NUTS	16 mm DIA.	2
4	SPRING WASHER	17 mm DIA.	2

LENGTH OF CHANNEL WILL BE DECIDED ACCORDING TO WIDTH BG. GIRDER BY ENGINEER-IN-CHARGE.

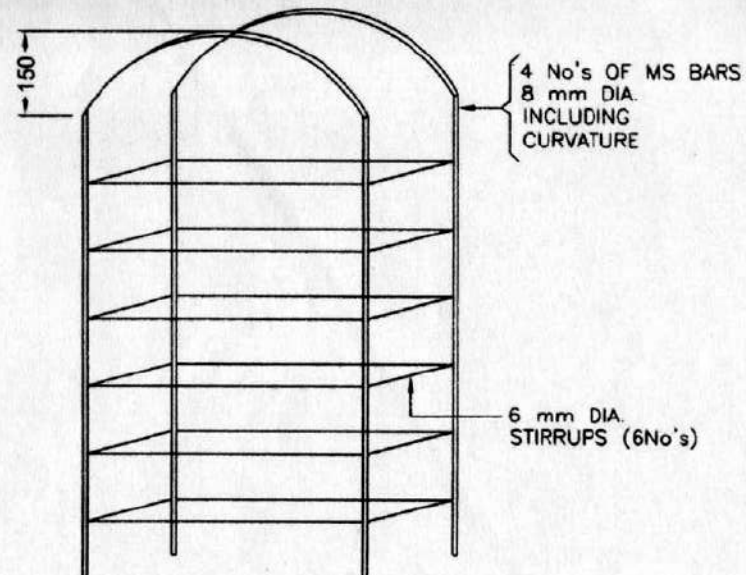
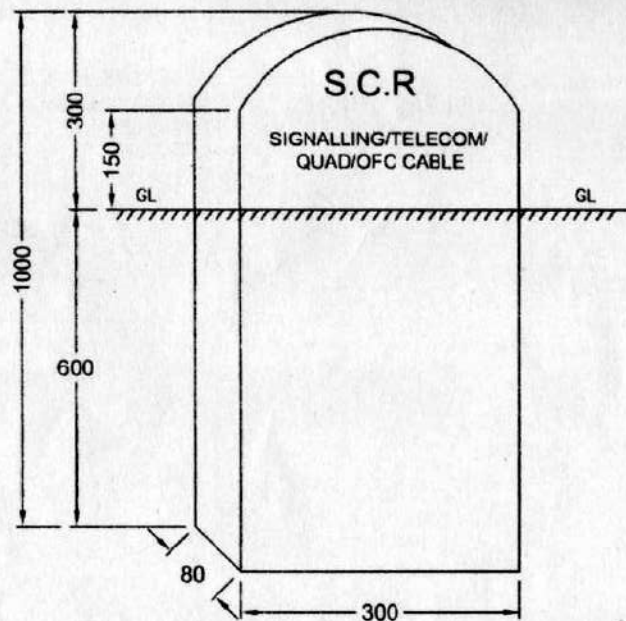
WEIGHT OF CHANNEL 9.2 Kg./ PER METER APPROX.

CHANNEL TO BE SUPPLIED WITH 2 COATS OF PRIMER REDOXIDE.

AN ARROW TO BE PUNCHED ON THE TOP OF 'J' BOLT TO INDICATE DIRECTION OF BEND.

TRUE COPY
SSTE/PE/D/CORE/ALD

	DY. CSTE	DRN	MILD STEEL CHANNEL FOR TROUGH FIXING	DRG. NO. S&T / RE / 78 / 2 / 76
	DSTE	TCD		PG. 1 of 2
20/21	CTI	CHD	RAILWAY ELECTRIFICATION	DT. 20-5-82
ALL DIMENTIONS IN MILIMETER				NOT TO SCALE



REINFORCEMENT DETAILS

NOTE:-

1. CONCRETE MIX SHOULD BE 1 CEMENT 2 SAND AND 4 HARD STONE AGGREGATE 20 mm NORMAL SIZE i.e.1:2:4
2. FINISHING SHOULD BE SMOOTH FOR A DISTANCE OF 450 mm FROM TOP.

(ALL DIMENSIONS ARE IN MM)

NEW SHEET

Branch	DRAWN	FOUNDATION FOR SIGNAL CABLE MARKER (NOT TO SCALE)
	CHECKED	
	ASTE	
	SSTE	
	f.CSTE	DRG.NO SK.12/10

16

ANNEXURE-1

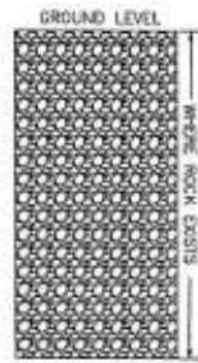


FIG:1.1 SOIL STRATA

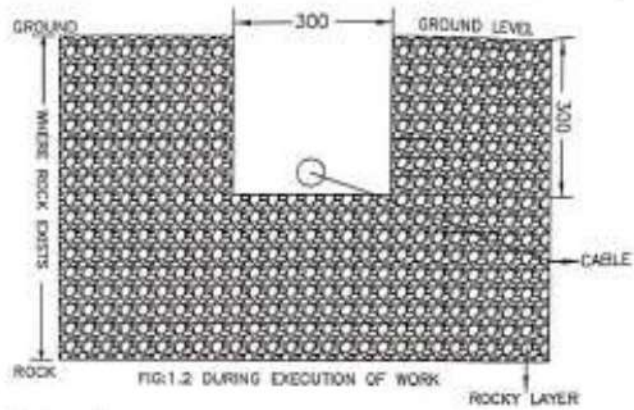


FIG:1.2 DURING EXECUTION OF WORK

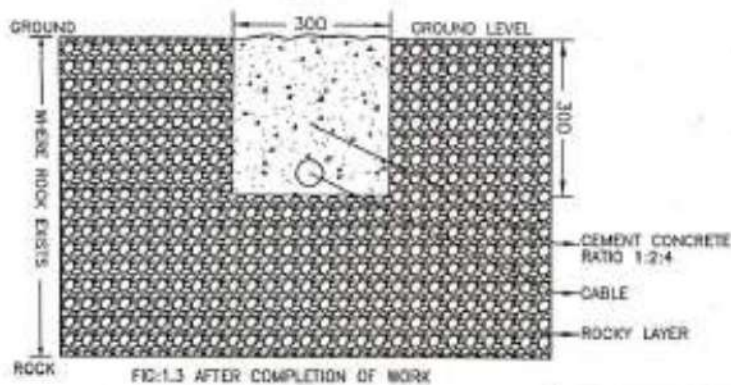


FIG:1.3 AFTER COMPLETION OF WORK

NOTE:

1. ALL DIMENSIONS ARE IN MILLIMETRES.

DRG NO: SK/CN/HQ/01/2022		
DESIGNED BY	SK/CN/HQ/01/2022	SKETCH SHOWING THE PROCEDURE FOR EXCAVATION OF CABLE TRENCH IF ROCK EXISTS FROM SURFACE OF GROUND TO 300MM.
CHECKED BY	SSE/DRG	
APPROVED BY	ASTE/C/HQ	
DATE	01.05.2022	

ANNEXURE-2

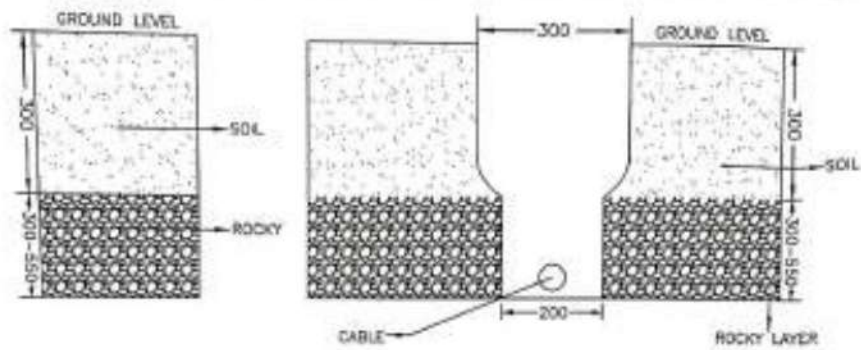


FIG-3.1 SOIL STRATA

FIG-3.2 DURING EXECUTION OF WORK

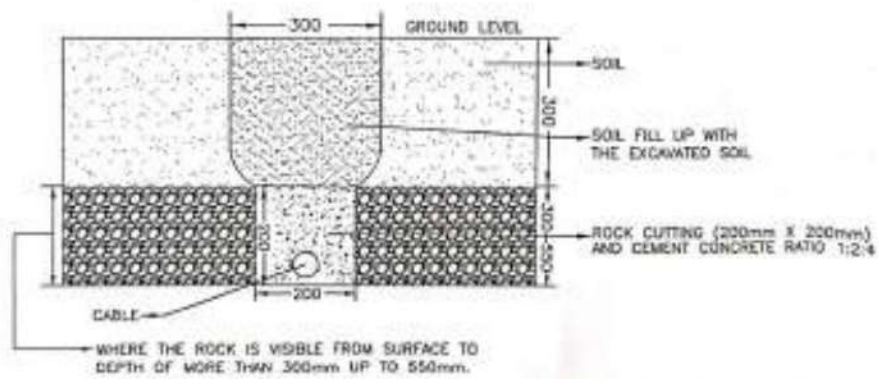
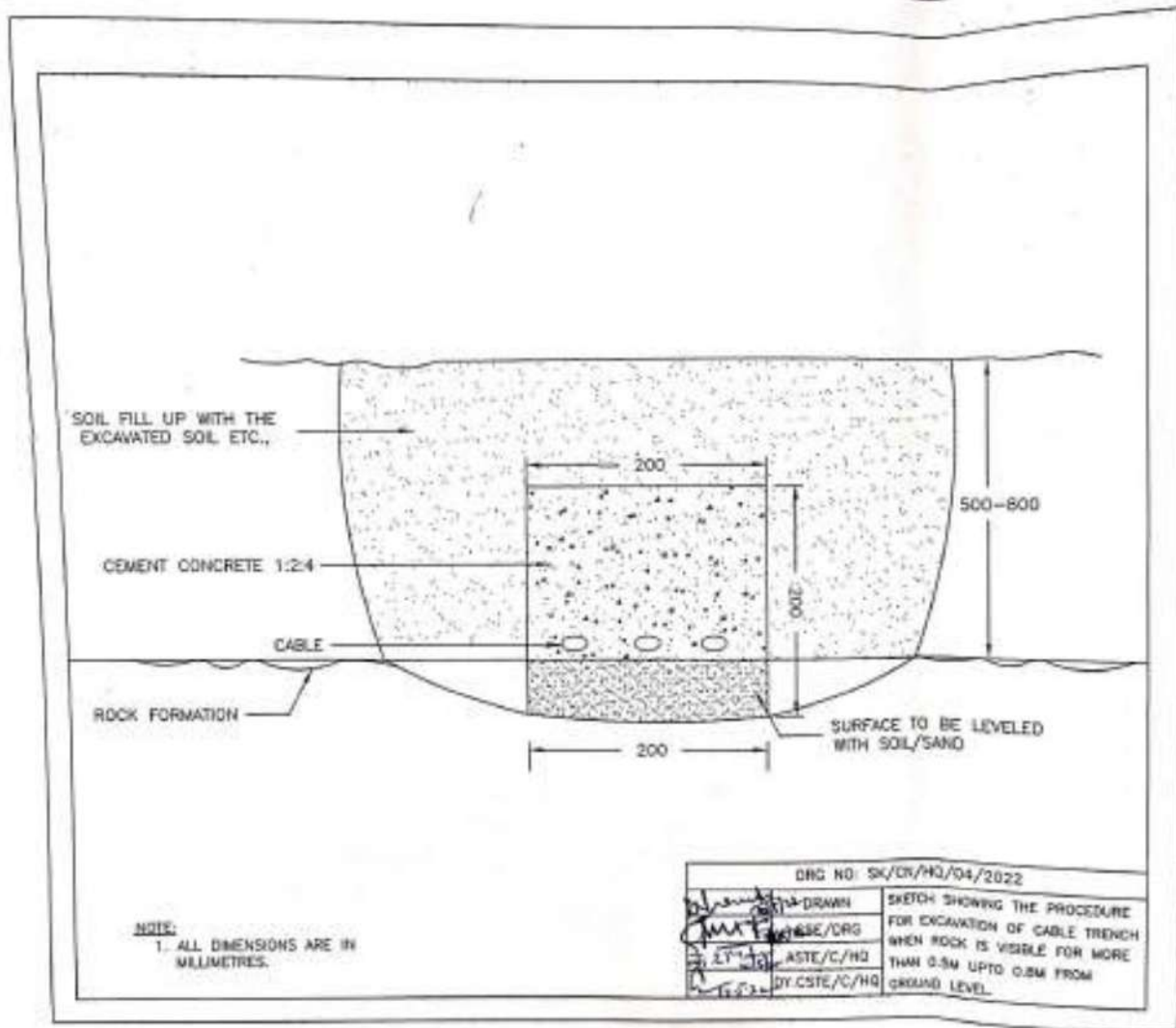


FIG-3.3 AFTER COMPLETION OF WORK

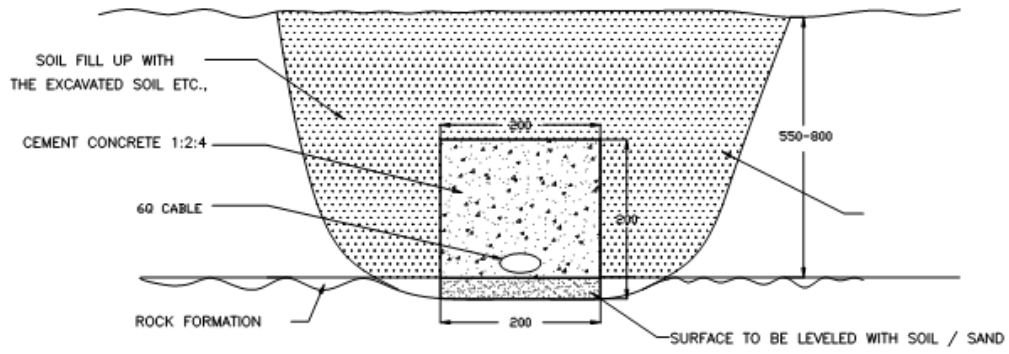
NOTE:
1. ALL DIMENSIONS ARE IN MILLIMETRES.

DRG NO: SK/CN/HQ/03/2022		
APPROVED	DESIGNED	SKETCH SHOWING THE PROCEDURE FOR EXCAVATION OF CABLE TRENCH IF ROCK EXPOSED FROM SURFACE TO A DEPTH MORE THAN 300MM UP TO 550MM.
CHECKED	DRAWN	
REVIEWED	SSE/DRG	
APPROVED	ASTE/C/HQ	
APPROVED	DR.CSTE/C/HQ	

ANNEXURE-3



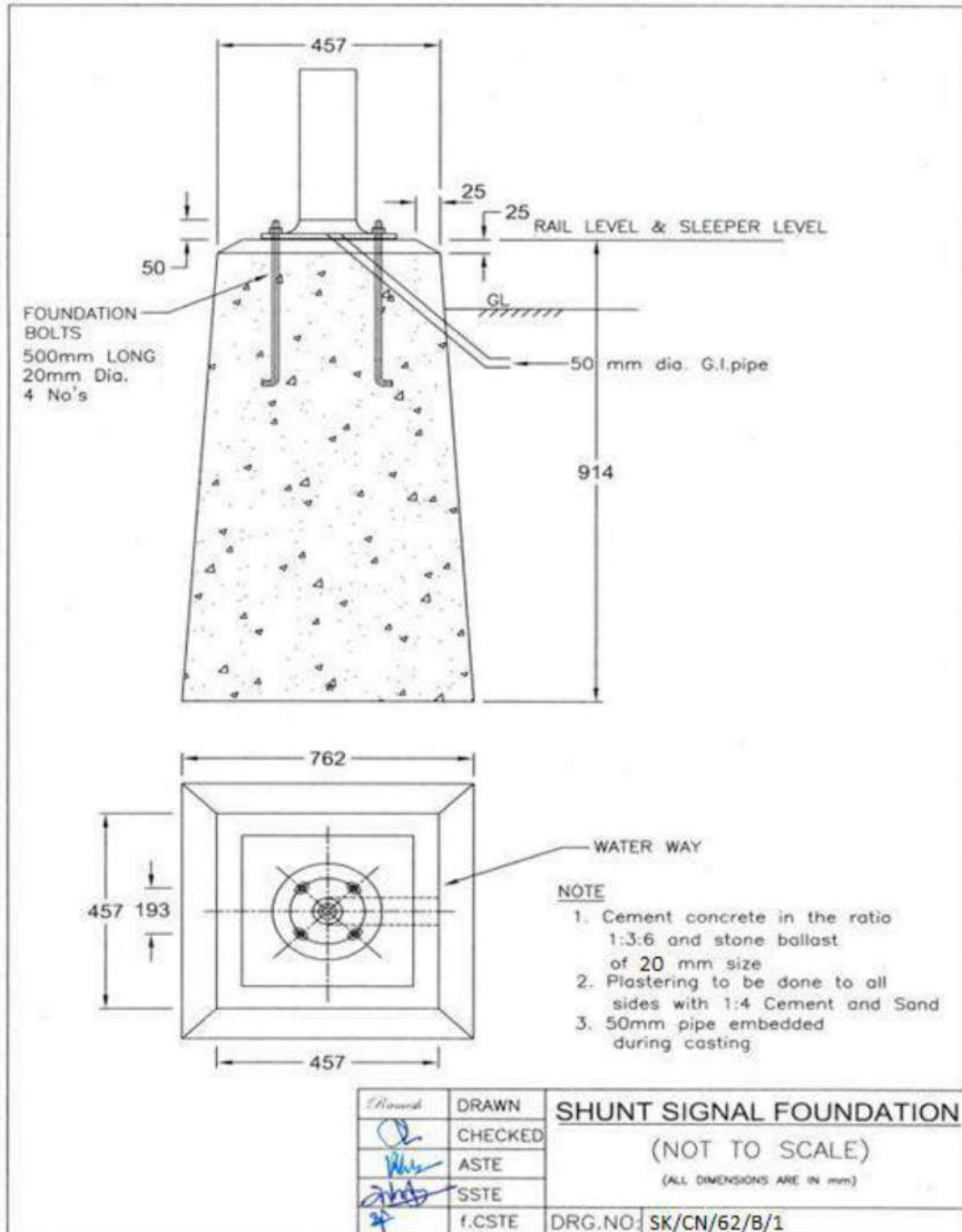
Rock faced at about 550-800 mm depth

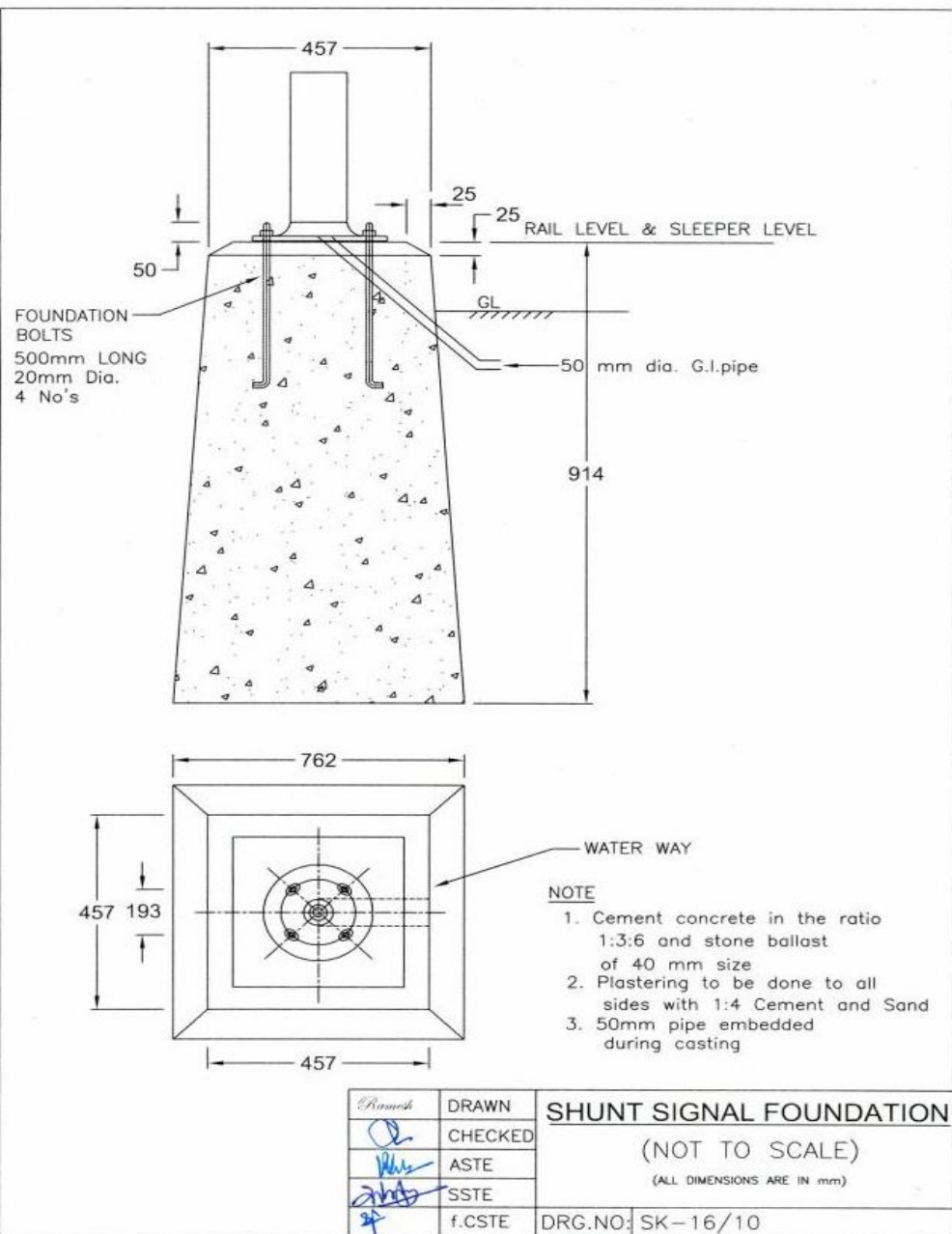


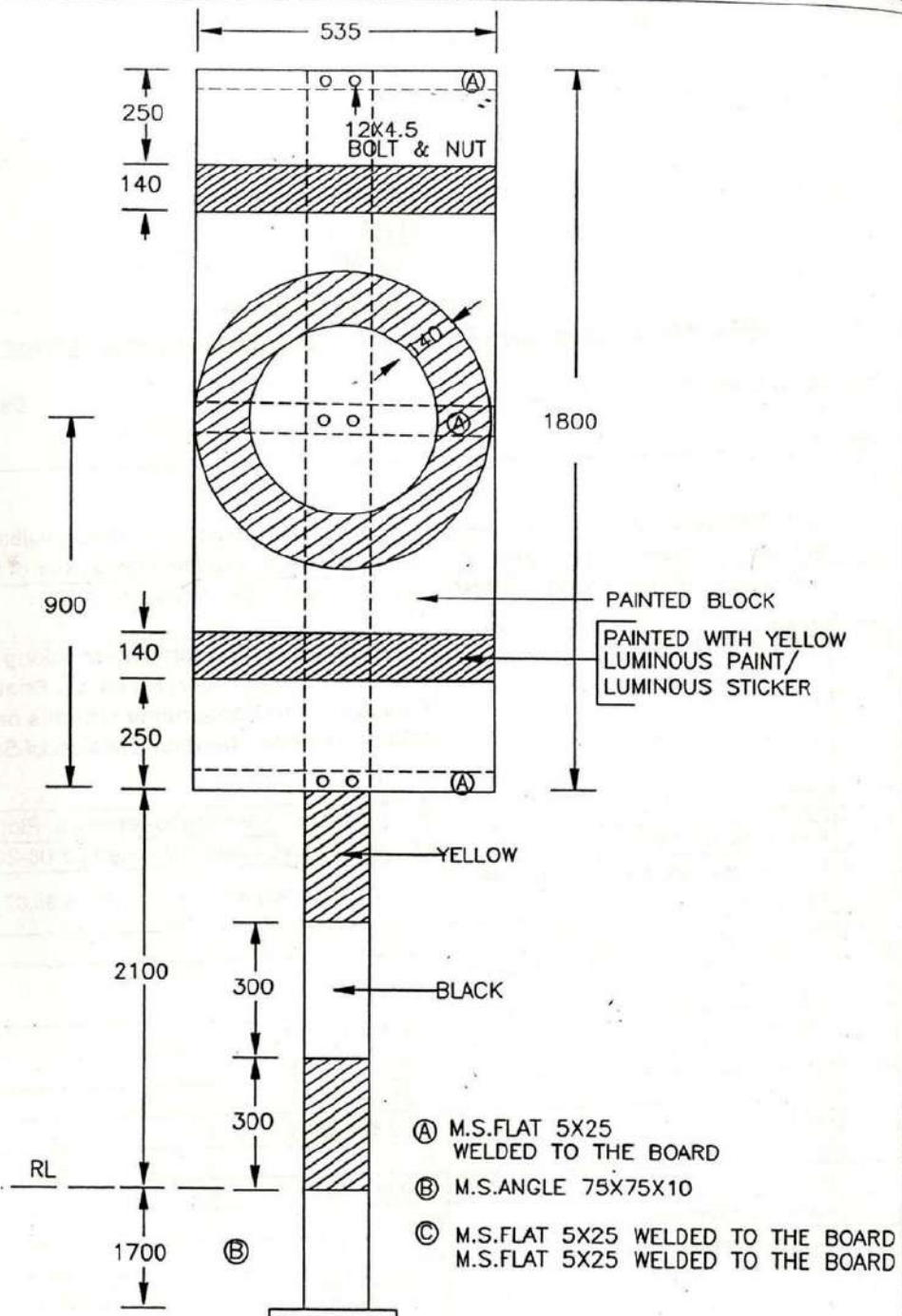
NOTE: All dimensions are in mm

	DRAWN	CHECKED	ROCK FACED AT ABOUT 550-800 MM DEPTH (NOT TO SCALE) DRG. No. SK/SQ/CN/New-4
	JE-1/DRG.		
	SSE/DRG.		
	ASTE/C		

ANNEXURE-9







NOTE

1. CHASE IN ROCK BELOW THE GI SHADED PORTION TO BE FILLED WITH CEMENT MORTAR

RAVI	DRAWN	CHECKED
<i>[Signature]</i>	JE-I/DRG.	
<i>[Signature]</i>	SSE/DRG.	
<i>[Signature]</i>	ASTE/C	

SIGHTING BOARD (FOR GOODS TRAIN)

(NOT TO SCALE)
(ALL DIMENSIONS ARE IN mm)