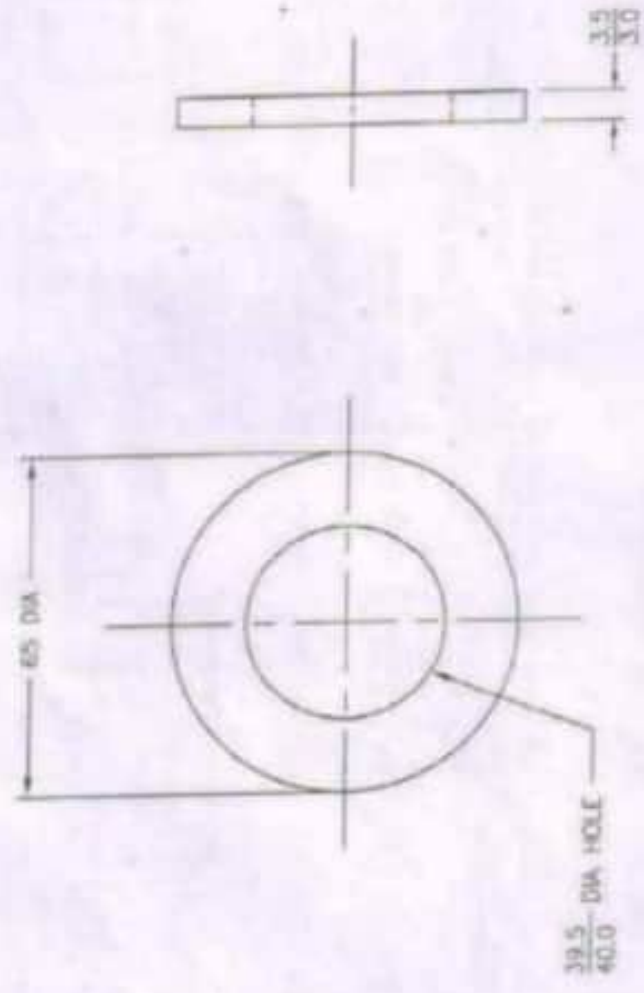


57



MATL & SPEC	THERMOPLASTIC POLY URETHANE MOULDED INSULATION RDSO/SPN/S/168/02 IRS : S 23
SCALE	MILLIMETRES 10 0 20 40 DO NOT SCALE

1. ALL DIMENSIONS IN MILLIMETRES.

NOTE

6	LAYOUT FACING POINT 1 IN 12 TURNOUT B.G. ON P.S.C. SLEEPERS FITTED WITH IRS ELECTRIC PL M/C (60 Kg & 52 Kg)	RDSO/S 3261-62
6	LAYOUT FACING POINT B.G. FITTED WITH HIGH THRUST ROTARY LOCK TYPE POINT M/C (WITH PIN JOINT) (52 Kg & 90 R)	RDSO/S 3262-63
8	LAYOUT FACING POINT 1 IN 12 TURNOUT B.G. WITH THICK WEB TONGUE RAIL ON PSC SLEEPERS FITTED WITH IRS POINT MACHINE 220 mm STROKE (60 Kg & 52 Kg)	RDSO/S 3465-66
2	LAYOUT 1 IN 12 TURNOUT B.G. 60 Kg. (WITH ZUI-60 THICK WEB TONGUE RAIL) ON PSC SLEEPERS FITTED WITH IRS PL M/C (220 mm STROKE) FOR INDEPENDENT SWITCH LOCKING & CLAMP POINT LOCK (150 mm) THROW OF POINT)	RDSO/S 3454
8	B.G. 53 Kg (WITH ZU 2-49 THICK WEB TONGUE RAIL)	RDSO/S 3455
NO. OFF.	DESCRIPTION	NO.
FOR ASSEMBLY.		
R. D. S. O.		
INSULATING WASHER		
STAND CANDID. REV.		
8640/2		

ALT. DESCRIPTION | DATE

THIS FIGURE IS FOR PRELIMINARY INFORMATION

DESCRIPTION: WELDED STEEL ASSEMBLY FOR TEST JARING

1. MATERIAL: STEEL
2. SIZE: 1/2" x 1/2" x 1/2"
3. WEIGHT: APPROX. 1.5 LBS.
4. FINISH: POLISHED
5. TOLERANCES: SEE DRAWING
6. DIMENSIONS: SEE DRAWING
7. WEIGHT: APPROX. 1.5 LBS.
8. FINISH: POLISHED
9. TOLERANCES: SEE DRAWING
10. DIMENSIONS: SEE DRAWING

NOTES:

1. THIS DRAWING IS FOR PRELIMINARY INFORMATION ONLY. IT IS NOT TO BE USED FOR FABRICATION OR ASSEMBLY.

2. ALL DIMENSIONS ARE IN INCHES, UNLESS OTHERWISE SPECIFIED.

3. ALL SURFACES ARE TO BE FINISHED BY THE FABRICATOR.

4. THE FABRICATOR IS TO BE RESPONSIBLE FOR THE PROTECTION OF THE SURFACES.

5. THE FABRICATOR IS TO BE RESPONSIBLE FOR THE PROTECTION OF THE SURFACES.

6. THE FABRICATOR IS TO BE RESPONSIBLE FOR THE PROTECTION OF THE SURFACES.

7. THE FABRICATOR IS TO BE RESPONSIBLE FOR THE PROTECTION OF THE SURFACES.

8. THE FABRICATOR IS TO BE RESPONSIBLE FOR THE PROTECTION OF THE SURFACES.

9. THE FABRICATOR IS TO BE RESPONSIBLE FOR THE PROTECTION OF THE SURFACES.

10. THE FABRICATOR IS TO BE RESPONSIBLE FOR THE PROTECTION OF THE SURFACES.



NO. 1011
DESCRIPTION FOR ASSEMBLY
R. D. S. O.
CRANK-BUSH 'A'

NOTE:
1. MATERIAL: STEEL
2. SIZE: 1/2" x 1/2" x 1/2"
3. WEIGHT: APPROX. 1.5 LBS.
4. FINISH: POLISHED
5. TOLERANCES: SEE DRAWING
6. DIMENSIONS: SEE DRAWING
7. WEIGHT: APPROX. 1.5 LBS.
8. FINISH: POLISHED
9. TOLERANCES: SEE DRAWING
10. DIMENSIONS: SEE DRAWING

NOTES:

1. THIS DRAWING IS FOR PRELIMINARY INFORMATION ONLY. IT IS NOT TO BE USED FOR FABRICATION OR ASSEMBLY.

2. ALL DIMENSIONS ARE IN INCHES, UNLESS OTHERWISE SPECIFIED.

3. ALL SURFACES ARE TO BE FINISHED BY THE FABRICATOR.

4. THE FABRICATOR IS TO BE RESPONSIBLE FOR THE PROTECTION OF THE SURFACES.

5. THE FABRICATOR IS TO BE RESPONSIBLE FOR THE PROTECTION OF THE SURFACES.

6. THE FABRICATOR IS TO BE RESPONSIBLE FOR THE PROTECTION OF THE SURFACES.

7. THE FABRICATOR IS TO BE RESPONSIBLE FOR THE PROTECTION OF THE SURFACES.

8. THE FABRICATOR IS TO BE RESPONSIBLE FOR THE PROTECTION OF THE SURFACES.

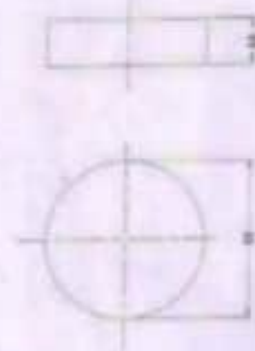
9. THE FABRICATOR IS TO BE RESPONSIBLE FOR THE PROTECTION OF THE SURFACES.

10. THE FABRICATOR IS TO BE RESPONSIBLE FOR THE PROTECTION OF THE SURFACES.

1. TOTAL LENGTH: 1.5 INCHES
2. TOTAL WIDTH: 1.5 INCHES
3. TOTAL HEIGHT: 1.5 INCHES
4. TOTAL WEIGHT: 1.5 LBS.
5. TOTAL FINISH: POLISHED
6. TOTAL TOLERANCES: SEE DRAWING
7. TOTAL DIMENSIONS: SEE DRAWING

ALL DIMENSIONS IN INCHES

S 8911



NO. 1012
DESCRIPTION FOR ASSEMBLY
R. D. S. O.
CRANK-BUSH

NOTE:
1. MATERIAL: STEEL
2. SIZE: 1/2" x 1/2" x 1/2"
3. WEIGHT: APPROX. 1.5 LBS.
4. FINISH: POLISHED
5. TOLERANCES: SEE DRAWING
6. DIMENSIONS: SEE DRAWING
7. WEIGHT: APPROX. 1.5 LBS.
8. FINISH: POLISHED
9. TOLERANCES: SEE DRAWING
10. DIMENSIONS: SEE DRAWING

NOTES:

1. THIS DRAWING IS FOR PRELIMINARY INFORMATION ONLY. IT IS NOT TO BE USED FOR FABRICATION OR ASSEMBLY.

2. ALL DIMENSIONS ARE IN INCHES, UNLESS OTHERWISE SPECIFIED.

3. ALL SURFACES ARE TO BE FINISHED BY THE FABRICATOR.

4. THE FABRICATOR IS TO BE RESPONSIBLE FOR THE PROTECTION OF THE SURFACES.

5. THE FABRICATOR IS TO BE RESPONSIBLE FOR THE PROTECTION OF THE SURFACES.

6. THE FABRICATOR IS TO BE RESPONSIBLE FOR THE PROTECTION OF THE SURFACES.

7. THE FABRICATOR IS TO BE RESPONSIBLE FOR THE PROTECTION OF THE SURFACES.

8. THE FABRICATOR IS TO BE RESPONSIBLE FOR THE PROTECTION OF THE SURFACES.

9. THE FABRICATOR IS TO BE RESPONSIBLE FOR THE PROTECTION OF THE SURFACES.

10. THE FABRICATOR IS TO BE RESPONSIBLE FOR THE PROTECTION OF THE SURFACES.

1. TOTAL LENGTH: 1.5 INCHES
2. TOTAL WIDTH: 1.5 INCHES
3. TOTAL HEIGHT: 1.5 INCHES
4. TOTAL WEIGHT: 1.5 LBS.
5. TOTAL FINISH: POLISHED
6. TOTAL TOLERANCES: SEE DRAWING
7. TOTAL DIMENSIONS: SEE DRAWING

ALL DIMENSIONS IN INCHES

S 8913

NO. 1013
DESCRIPTION FOR ASSEMBLY
R. D. S. O.
CRANK-BUSH 'B'

NOTE:
1. MATERIAL: STEEL
2. SIZE: 1/2" x 1/2" x 1/2"
3. WEIGHT: APPROX. 1.5 LBS.
4. FINISH: POLISHED
5. TOLERANCES: SEE DRAWING
6. DIMENSIONS: SEE DRAWING
7. WEIGHT: APPROX. 1.5 LBS.
8. FINISH: POLISHED
9. TOLERANCES: SEE DRAWING
10. DIMENSIONS: SEE DRAWING

NOTES:

1. THIS DRAWING IS FOR PRELIMINARY INFORMATION ONLY. IT IS NOT TO BE USED FOR FABRICATION OR ASSEMBLY.

2. ALL DIMENSIONS ARE IN INCHES, UNLESS OTHERWISE SPECIFIED.

3. ALL SURFACES ARE TO BE FINISHED BY THE FABRICATOR.

4. THE FABRICATOR IS TO BE RESPONSIBLE FOR THE PROTECTION OF THE SURFACES.

5. THE FABRICATOR IS TO BE RESPONSIBLE FOR THE PROTECTION OF THE SURFACES.

6. THE FABRICATOR IS TO BE RESPONSIBLE FOR THE PROTECTION OF THE SURFACES.

7. THE FABRICATOR IS TO BE RESPONSIBLE FOR THE PROTECTION OF THE SURFACES.

8. THE FABRICATOR IS TO BE RESPONSIBLE FOR THE PROTECTION OF THE SURFACES.

9. THE FABRICATOR IS TO BE RESPONSIBLE FOR THE PROTECTION OF THE SURFACES.

10. THE FABRICATOR IS TO BE RESPONSIBLE FOR THE PROTECTION OF THE SURFACES.

1. TOTAL LENGTH: 1.5 INCHES
2. TOTAL WIDTH: 1.5 INCHES
3. TOTAL HEIGHT: 1.5 INCHES
4. TOTAL WEIGHT: 1.5 LBS.
5. TOTAL FINISH: POLISHED
6. TOTAL TOLERANCES: SEE DRAWING
7. TOTAL DIMENSIONS: SEE DRAWING

ALL DIMENSIONS IN INCHES

S 8912



NO	DESCRIPTION	DATE	BY	CHK	APPROVED
1	REGULATION PLATE FOR LEADING STRETCHER BAR	5 8304			
2	LOCK & DETECTOR ROD - BUSH (FOR THICK WEB SWITCHES)	5 22179			
3	SWITCH DETENTION BRACKET - REGULATION BUSH	5 23199			
4	LOCK & DETECTOR ROD - BUSH (FOR THICK WEB SWITCHES)	5 22179			
5	SWITCH DETENTION BRACKET - REGULATION BUSH	5 23199			

100mm

50mm

10mm

20mm

10mm

100mm

10mm

5mm

1. ALL DIMENSIONS IN MILLIMETRES

NOTE

✓

1. ALL DIMENSIONS IN MILLIMETRES

NOTE

✓

1. ALL DIMENSIONS IN MILLIMETRES

NOTE

✓

1. ALL DIMENSIONS IN MILLIMETRES

NOTE

✓

NO	DESCRIPTION	DATE	BY	CHK	APPROVED
1	REGULATION PLATE FOR LEADING STRETCHER BAR	5 8304			
2	LOCK & DETECTOR ROD - BUSH (FOR THICK WEB SWITCHES)	5 22179			
3	SWITCH DETENTION BRACKET - REGULATION BUSH	5 23199			
4	LOCK & DETECTOR ROD - BUSH (FOR THICK WEB SWITCHES)	5 22179			
5	SWITCH DETENTION BRACKET - REGULATION BUSH	5 23199			

S&T Drawing

Chapter - 7

Track Circuit equipments.



2. FINISHED FINE ALL OVER.
2. ALL DIMENSIONS SHALL BE WITHIN \pm 1/8" UNLESS OTHERWISE SPECIFIED.
1. ALL DIMENSIONS IN MILLIMETRES.

100 200 300 400 500 600 700 800 900 1000 1100 1200 1300 1400 1500 1600 1700 1800 1900 2000 2100 2200 2300 2400 2500 2600 2700 2800 2900 3000 3100 3200 3300 3400 3500 3600 3700 3800 3900 4000 4100 4200 4300 4400 4500 4600 4700 4800 4900 5000 5100 5200 5300 5400 5500 5600 5700 5800 5900 6000 6100 6200 6300 6400 6500 6600 6700 6800 6900 7000 7100 7200 7300 7400 7500 7600 7700 7800 7900 8000 8100 8200 8300 8400 8500 8600 8700 8800 8900 9000 9100 9200 9300 9400 9500 9600 9700 9800 9900 10000 10100 10200 10300 10400 10500 10600 10700 10800 10900 11000 11100 11200 11300 11400 11500 11600 11700 11800 11900 12000 12100 12200 12300 12400 12500 12600 12700 12800 12900 13000 13100 13200 13300 13400 13500 13600 13700 13800 13900 14000 14100 14200 14300 14400 14500 14600 14700 14800 14900 15000 15100 15200 15300 15400 15500 15600 15700 15800 15900 16000 16100 16200 16300 16400 16500 16600 16700 16800 16900 17000 17100 17200 17300 17400 17500 17600 17700 17800 17900 18000 18100 18200 18300 18400 18500 18600 18700 18800 18900 19000 19100 19200 19300 19400 19500 19600 19700 19800 19900 20000 20100 20200 20300 20400 20500 20600 20700 20800 20900 21000 21100 21200 21300 21400 21500 21600 21700 21800 21900 22000 22100 22200 22300 22400 22500 22600 22700 22800 22900 23000 23100 23200 23300 23400 23500 23600 23700 23800 23900 24000 24100 24200 24300 24400 24500 24600 24700 24800 24900 25000 25100 25200 25300 25400 25500 25600 25700 25800 25900 26000 26100 26200 26300 26400 26500 26600 26700 26800 26900 27000 27100 27200 27300 27400 27500 27600 27700 27800 27900 28000 28100 28200 28300 28400 28500 28600 28700 28800 28900 29000 29100 29200 29300 29400 29500 29600 29700 29800 29900 30000 30100 30200 30300 30400 30500 30600 30700 30800 30900 31000 31100 31200 31300 31400 31500 31600 31700 31800 31900 32000 32100 32200 32300 32400 32500 32600 32700 32800 32900 33000 33100 33200 33300 33400 33500 33600 33700 33800 33900 34000 34100 34200 34300 34400 34500 34600 34700 34800 34900 35000 35100 35200 35300 35400 35500 35600 35700 35800 35900 36000 36100 36200 36300 36400 36500 36600 36700 36800 36900 37000 37100 37200 37300 37400 37500 37600 37700 37800 37900 38000 38100 38200 38300 38400 38500 38600 38700 38800 38900 39000 39100 39200 39300 39400 39500 39600 39700 39800 39900 40000 40100 40200 40300 40400 40500 40600 40700 40800 40900 41000 41100 41200 41300 41400 41500 41600 41700 41800 41900

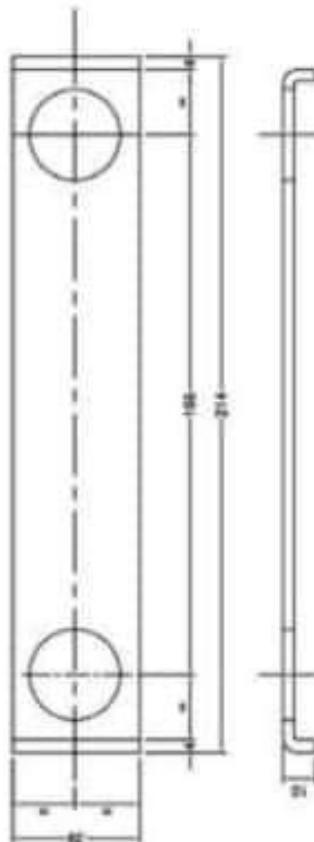
NOTE

[illegible]

R. D. S. O.

INSULATED RAIL JOINT-
INSULATING PLATE

Trade Account No.	121874 (ADVANCE)
S 22176 (ADV.)	



2. All dimensions shall be within ± 1.0 , unless otherwise specified.

[illegible]

NOTTE

INSULATED RAIL JOINT- BACKING PLATE	QTY 10.8.74	DATE (ADVANCE)
R. D. S. O.		
FOR ASSEMBLY		
DESCRIPTION	QTY	NO.
INSULATED RAIL JOINT- BACKING PLATE	10.8.74	QTY
S 22177 (ADV.)		

R. D. S. O.

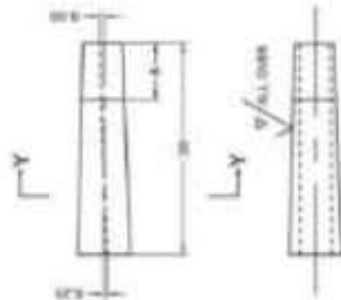
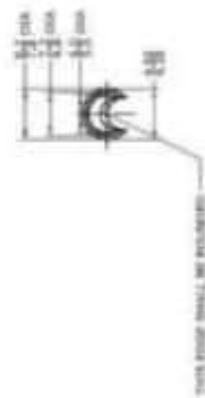
INSULATED RAIL JOINT-
BACKING PLATE

DATE	11.18.74
TIME	
BY	
(ADV.)	

S 22177 (ADV.)

1. **NAME** _____

[illegible]



No.	DESCRIPTION	No.
OFF	FOR ASSIGNMENT	
R. D. S. O.		
CHANNEL PIN		
SINGLE GROOVE, 7mm DIA. (FOR 4mm DIA. BOND WIRE)		
		IRS (S)
		S 69/M

MATERIAL	SPEC.	FINISH	PROCESS	COATING	TREATMENT	TESTS	NOTES
STEEL PLATE A 10' x 6' 1/8" THICK ASTM A-36 JAN. 1977		FLAT	ROLLING	POLYESTER	UV RAY	10' x 6'	10' x 6'

* ROUGHNESS NUMBER IN MICROINCHES

NOTE

3. PINS ARE TO BE COPPER OR TIN PLATED OR GALVANIZED.
4. DIMENSIONS AS SHOWN ARE WITH PLATING OR GALVANIZATION.
5. SPACES OF PINS TO BE AT RIGHT ANGLES TO THE AXIS.
6. ALL DIMENSIONS SHALL BE WITHIN ± 0.5 , UNLESS OTHER WISE SPECIFIED DEPENDING UPON RELATED DIMENSIONS.
7. ALL DIMENSIONS IN MILLIMETERS.

[illegible]

PARTS & SPEC	QUANTITY	UNIT	PRICE	TOTAL	DATE
PAVED JOE BROWN GROUND # 80	10	SQ YD	\$1.50	\$15.00	
MACHINE FINISH (MACHINE)	10	SQ YD	\$1.50	\$15.00	
MACHINE FINISH (MACHINE)	10	SQ YD	\$1.50	\$15.00	
HARD SET GRAVEL GROUND	10	SQ YD	\$1.50	\$15.00	
TOTAL				\$60.00	

* ROUGHNESS NUMBER IN FEETONS

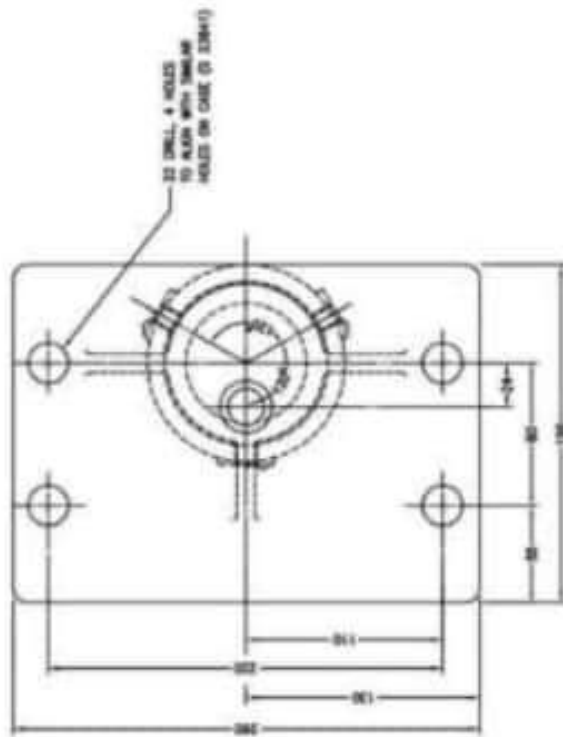
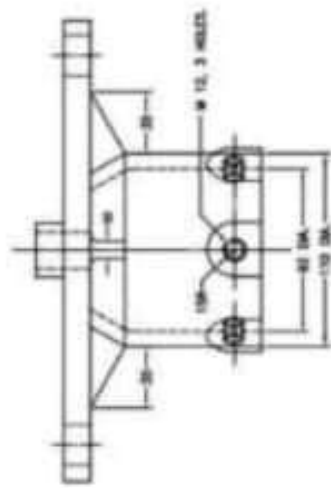
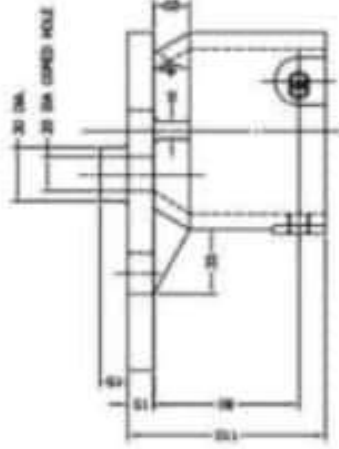
NOTES

1. ALL DIMENSIONS IN MILLIMETERS.

S&T Drawing

Chapter -8

**LED Main & Subsidiary
signals, CLS units, Route
Indicators &
foundation etc.**



7. EXCEPT ON THE WORKING SURFACES, PAINTED ALL OVER WITH TWO PRIMING COATS, ONE COAT OF ZINC CHROME TO IS : 104, FOLLOWED BY ONE COAT OF RED OXIDE - ZINC CHROME TO IS : 207A, AND A FINISHING COAT WITH DEAD BLACK PAINT TO IS : 154.
8. EDGES AND CORNERS ROUNDED OFF UNLESS OTHERWISE REQUIRED.
9. SMOOTH SMOOTH ALL OVER.
10. HOLE CENTRES SHALL NOT DEVIATE BY MORE THAN 0.5.
11. HOLE DIMENSIONS SHALL BE WITHIN ± 0.1 .
12. ALL DIMENSIONS SHALL BE WITHIN ± 0.5 UNLESS OTHERWISE SPECIFIED, DEPENDING UPON RELATED DIMENSIONS.
13. ALL DIMENSIONS IN MILLIMETRES.

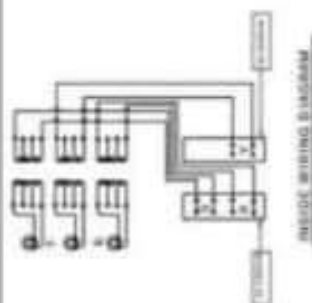
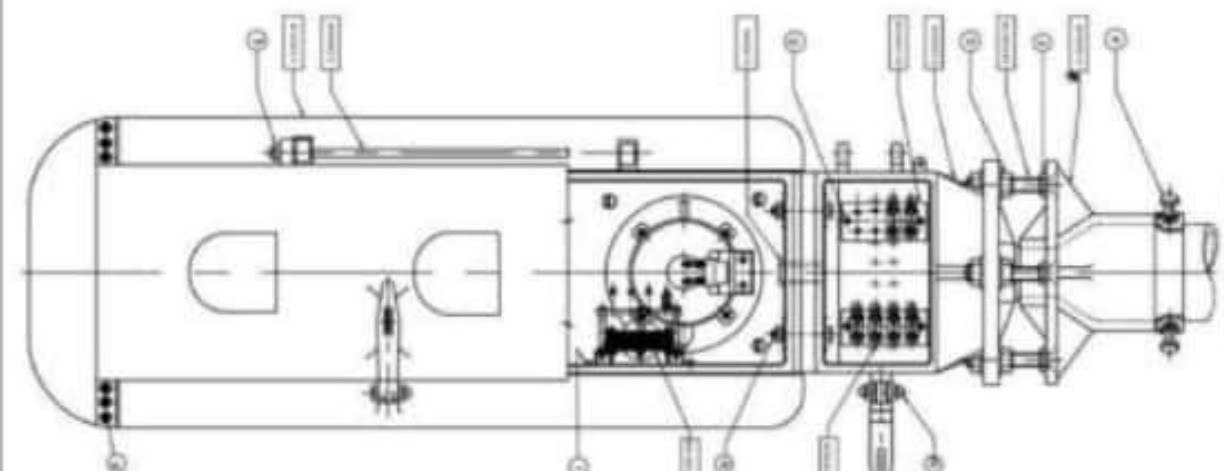
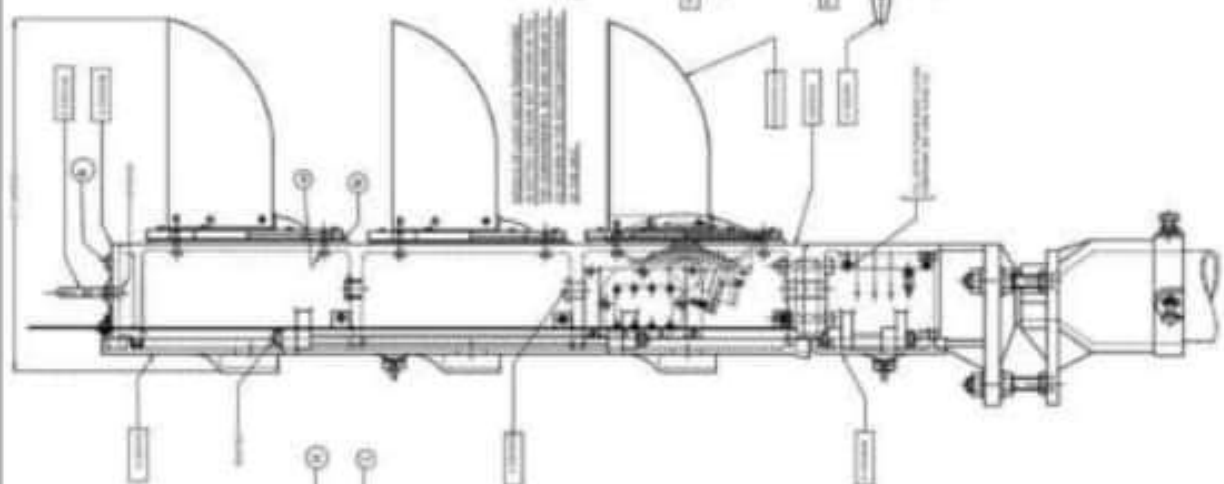
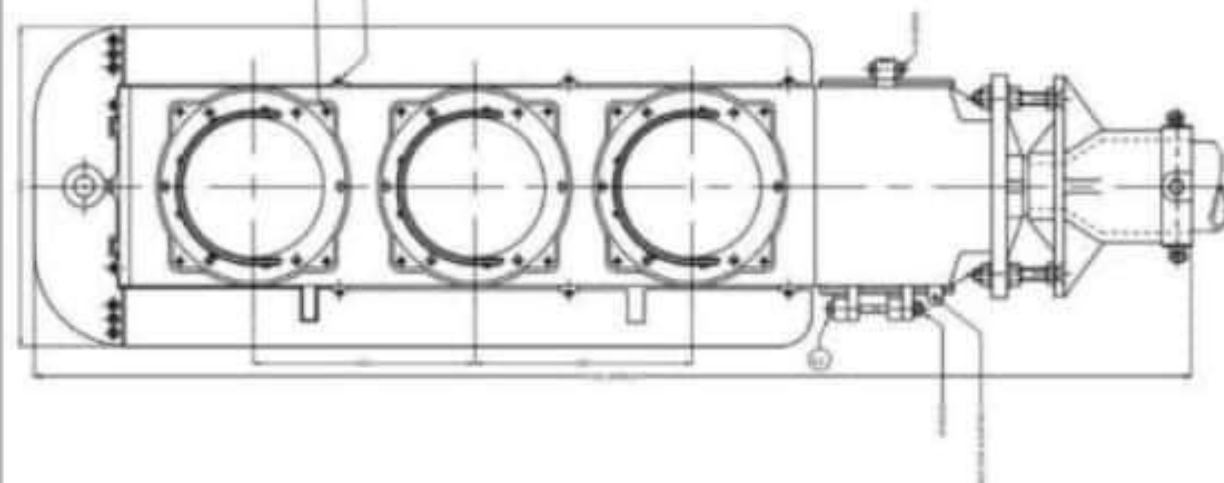
NOTE

WEL.	COAT IRON	GRADE TO	IS : 104	IS : 207A	IS : 154
SPC.	IN	GRADE TO	IS : 104	IS : 207A	IS : 154
SCALE	IN	GRADE TO	IS : 104	IS : 207A	IS : 154
100	100	100	100	100	100
200	200	200	200	200	200
300	300	300	300	300	300
400	400	400	400	400	400
500	500	500	500	500	500
600	600	600	600	600	600
700	700	700	700	700	700
800	800	800	800	800	800
900	900	900	900	900	900
1000	1000	1000	1000	1000	1000

1	SHUNT SIGNAL MOUNTING SOCKET	IS : 23845
NO.	DESCRIPTION	NO.
OFF	FOR ASSEMBLY	
R. D. S. O.		
SHUNT SIGNAL - MOUNTING SOCKET (90.0, DIA)		
TIME	DATE	DATE
100	100	100
200	200	200
300	300	300
400	400	400
500	500	500
600	600	600
700	700	700
800	800	800
900	900	900
1000	1000	1000

SI ADD 4/779 MICRO FILMED 4/78

CALCULATION REGISTER NO.	DRN	BSM	REVISION	TRC	CASE No.	ST/DM/25/35	NOTIFICATION NO.
1	1	1	1	1	1	1	1
2	2	2	2	2	2	2	2
3	3	3	3	3	3	3	3
4	4	4	4	4	4	4	4
5	5	5	5	5	5	5	5
6	6	6	6	6	6	6	6
7	7	7	7	7	7	7	7
8	8	8	8	8	8	8	8
9	9	9	9	9	9	9	9
10	10	10	10	10	10	10	10

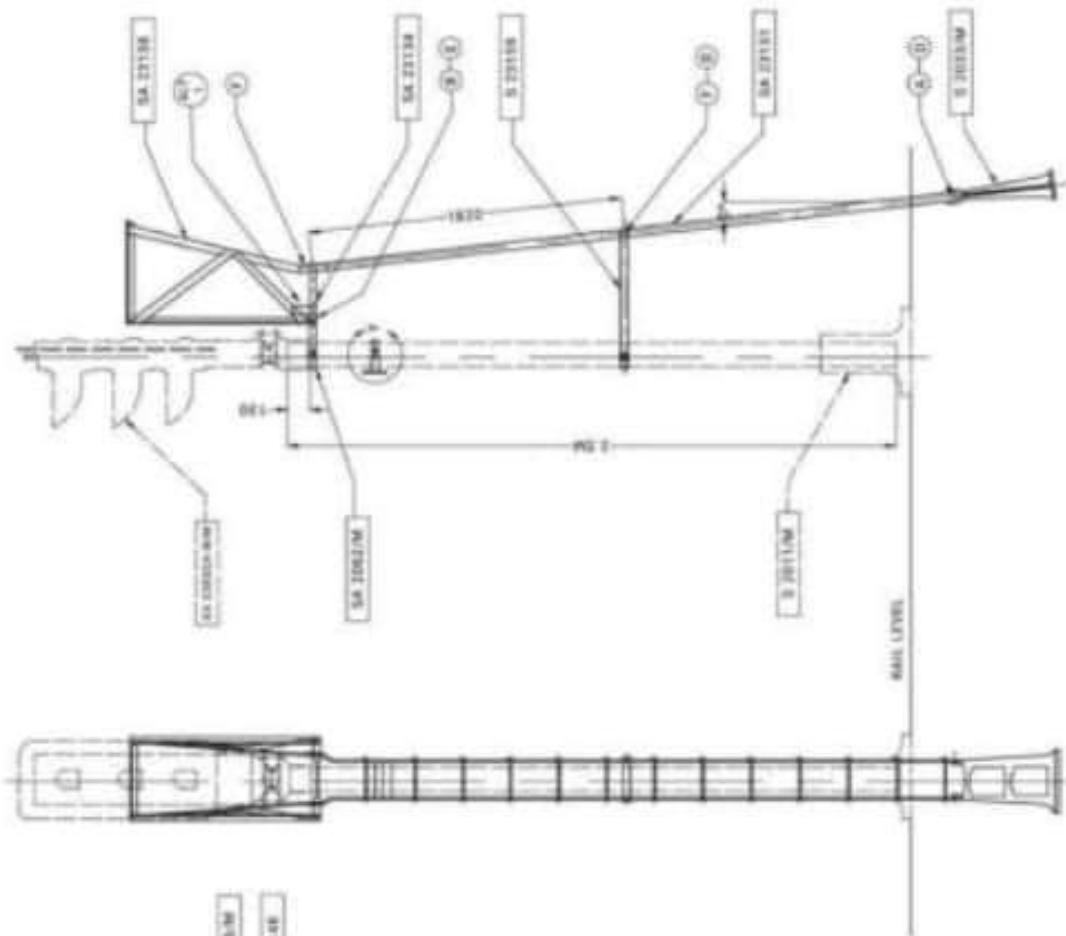
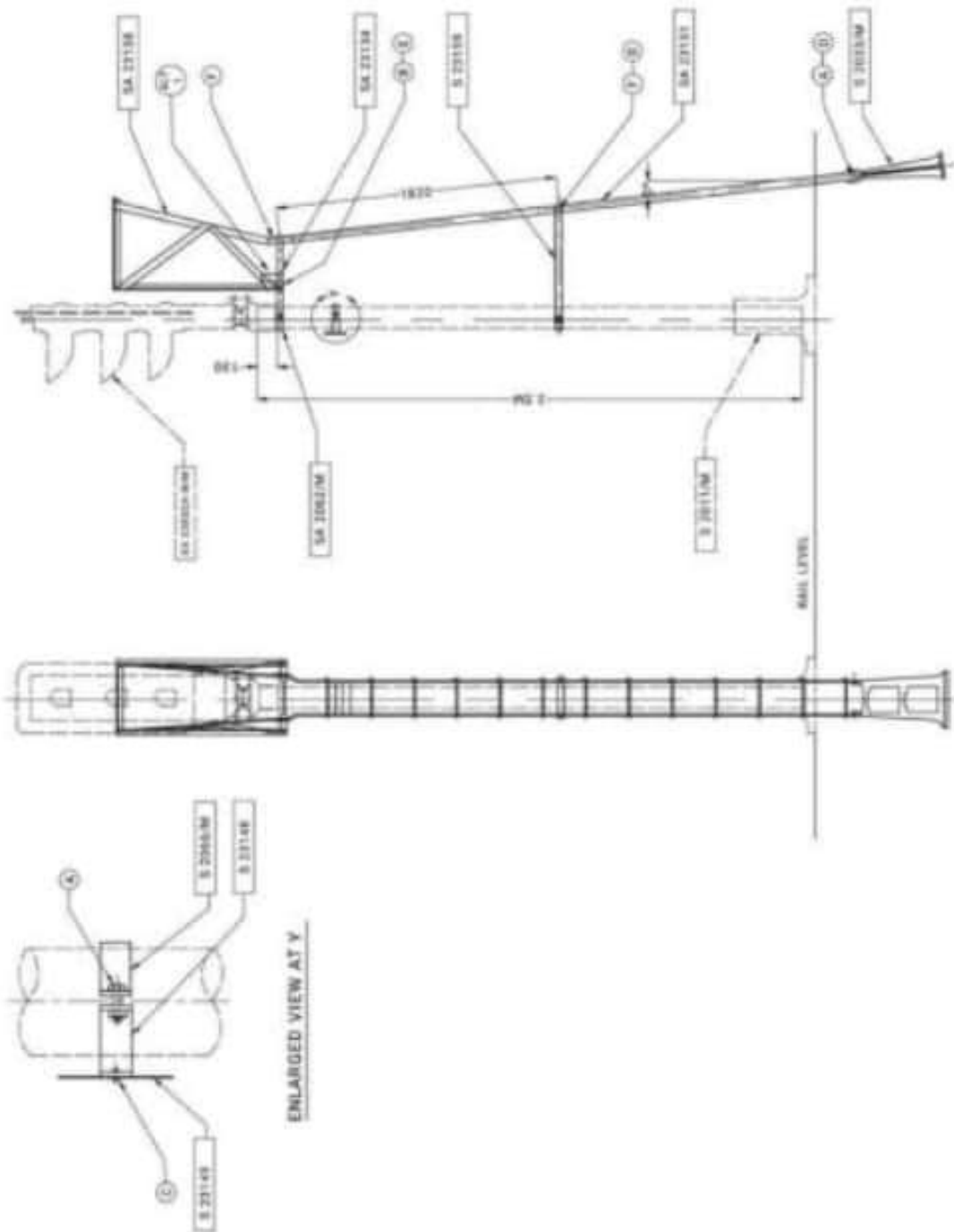
[illegible]

R.	D.	S.	O.
----	----	----	----

SIGNAL, COLOUR LIGHT,
MULTI UNIT TYPE
(3 ASPECTS)

SA 23002A/M	10/10	10/10
-------------	-------	-------

© 2000 by The McGraw-Hill Companies, Inc. All rights reserved. This publication is protected by copyright. No part of this publication may be reproduced, stored in a retrieval system, or transmitted, in any form or by any means, electronic, mechanical, photocopying, recording, or by any information storage and retrieval system, without prior written permission from The McGraw-Hill Companies, Inc. This publication may be used for educational or promotional purposes only. For more information, contact The McGraw-Hill Companies, Inc. at 1221 Avenue of the Americas, New York, NY 10020-1095.

[illegible]

R. D. S. O.

LABOR 35 M

FOR COLOUR LIGHT SIGNAL

- MULTI-UNIT TYPE)

SA 23150

01234567891011121314151617181920212223242526272829303132333435363738394041424344454647484950515253545556575859606162636465666768697071727374757677787980818283848586878889909192939495969798991001011021031041051061071081091101111121131141151161171181191201211221231241251261271281291301311321331341351361371381391401411421431441451461471481491501511521531541551561571581591601611621631641651661671681691701711721731741751761771781791801811821831841851861871881891901911921931941951961971981992002012022032042052062072082092102112122132142152162172182192202212222232242252262272282292302312322332342352362372382392402412422432442452462472482492502512522532542552562572582592602612622632642652662672682692702712722732742752762772782792802812822832842852862872882892902912922932942952962972982993003013023033043053063073083093103113123133143153163173183193203213223233243253263273283293303313323333343353363373383393403413423433443453463473483493503513523533543553563573583593603613623633643653663673683693703713723733743753763773783793803813823833843853863873883893903913923933943953963973983994004014024034044054064074084094104114124134144154164174184194204214224234244254264274284294304314324334344354364374384394404414424434444454464474484494504514524534544554564574584594604614624634644654664674684694704714724734744754764774784794804814824834844854864874884894904914924934944954964974984995005015025035045055065075085095105115125135145155165175185195205215225235245255265275285295305315325335345355365375385395405415425435445455465475485495505515525535545555565575585595605615625635645655665675685695705715725735745755765775785795805815825835845855865875885895905915925935945955965975985996006016026036046056066076086096106116126136146156166176186196206216226236246256266276286296306316326336346356366376386396406416426436446456466476486496506516526536546556566576586596606616626636646656666676686696706716726736746756766776786796806816826836846856866876886896906916926936946956966976986997007017027037047057067077087097107117127137147157167177187197207217227237247257267277287297307317327337347357367377387397407417427437447457467477487497507517527537547557567577587597607617627637647657667677687697707717727737747757767777787797807817827837847857867877887897907917927937947957967977987998008018028038048058068078088098108118128138148158168178188198208218228238248258268278288298308318328338348358368378388398408418428438448458468478488498508518528538548558568578588598608618628638648658668678688698708718728738748758768778788798808818828838848858868878888898908918928938948958968978988999009019029039049059069079089099109119129139149159169179189199209219229239249259269279289299309319329339349359369379389399409419429439449459469479489499509519529539549559569579589599609619629639649659669679689699709719729739749759769779789799809819829839849859869879889899909919929939949959969979989991000100110021003100410051006100710081009101010111012101310141015101610171018101910201021102210231024102510261027102810291030103110321033103410351036103710381039104010411042104310441045104610471048104910501051105210531054105510561057105810591060106110621063106410651066106710681069107010711072107310741075107610771078107910801081108210831084108510861087108810891090109110921093109410951096109710981099110011011102110311041105110611071108110911101111111211131114111511161117111811191120112111221123112411251126112711281129113011311132113311341135113611371138113911401141114211431144114511461147114811491150115111521153115411551156115711581159116011611162116311641165116611671168116911701171117211731174117511761177117811791180118111821183118411851186118711881189119011911192119311941195119611971198119912001201120212031204120512061207120812091210121112121213121412151216121712181219122012211222122312241225122612271228122912301231123212331234123512361237123812391240124112421243124412451246124712481249125012511252125312541255125612571258125912601261126212631264126512661267126812691270127112721273127412751276127712781279128012811282128312841285128612871288128912901291129212931294129512961297129812991300

WPC	100-510	PRINT DATE, TIME & MONTH	DATE
WILLIAMS	100-1-200-400	3-AMERICAN AND 5-ENGLISH	
100-1-200-400	100-1-200-400	DESCRIPTION	
100-1-200-400	100-1-200-400	DATE	

--	--

[illegible]

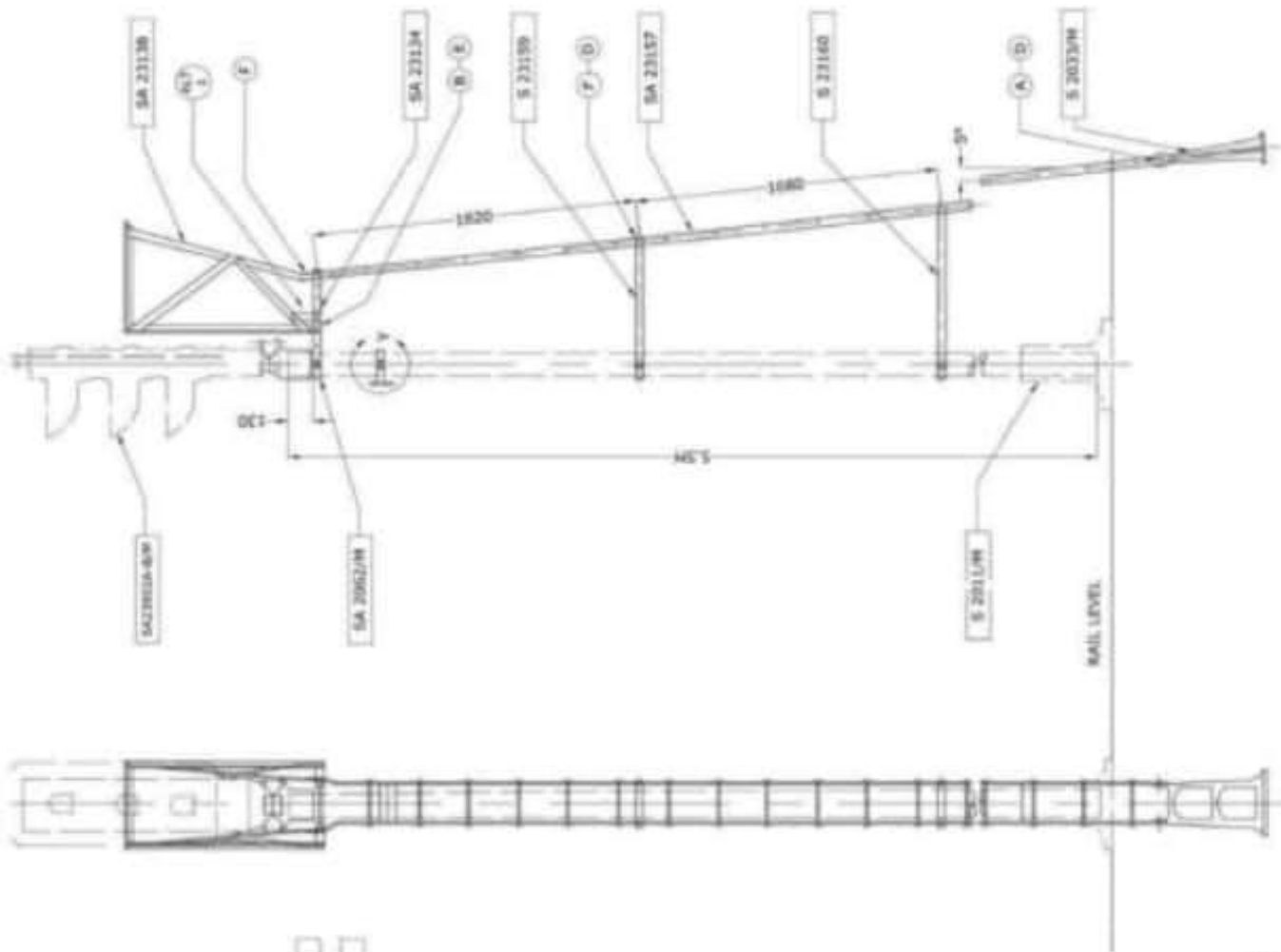
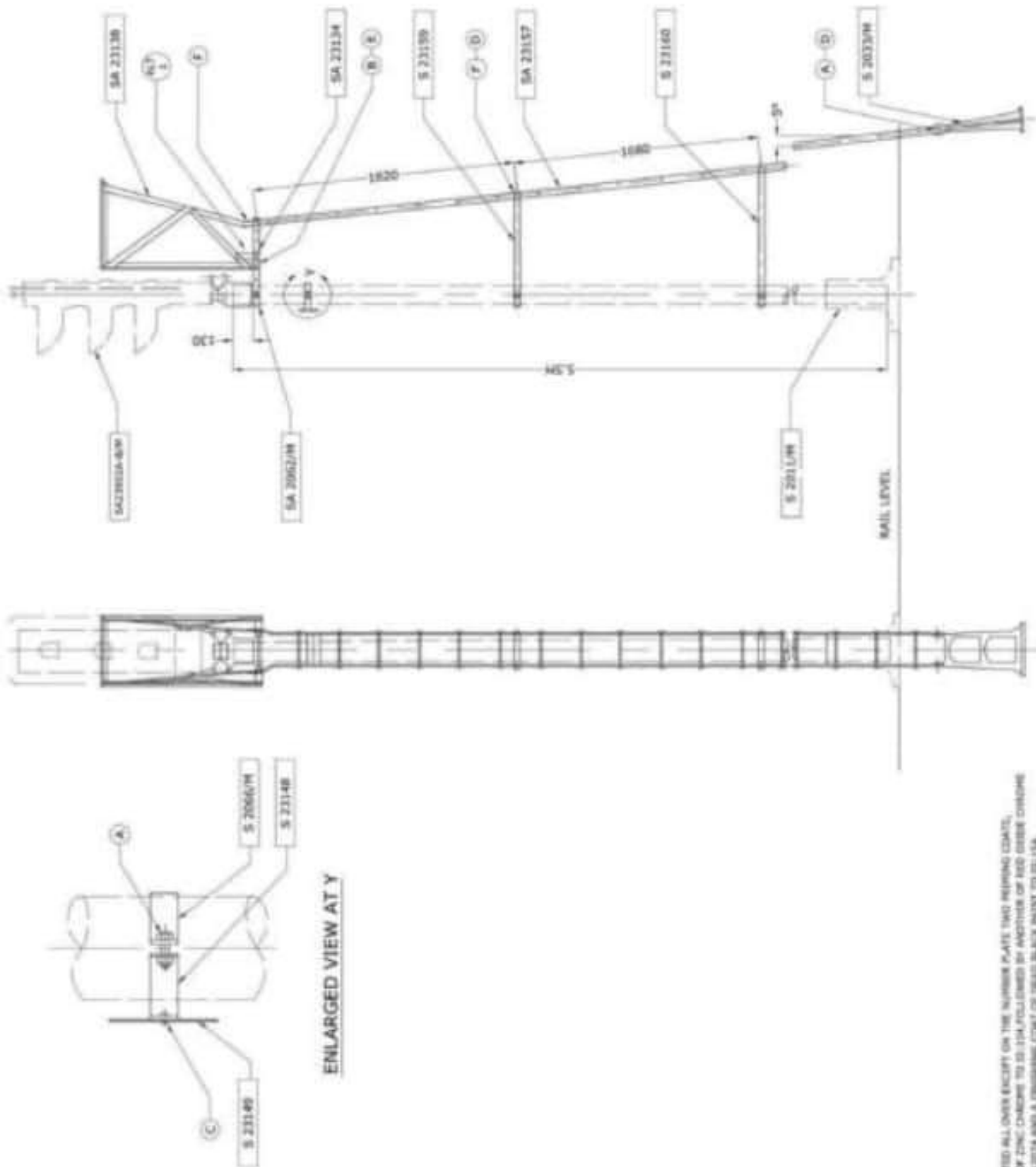
ALL INFORMATION CONTAINED HEREIN IS UNCLASSIFIED

NOTES

10

	COPYING REGISTER NO.	SHEET NO.	EFFECTIVE DATE	APPROVED BY	DATED FROM TO AND TIME OF DAY
	NO. OF COPIES ISSUED	RECEIVED BY	RECEIVED BY		

Address: 10000 University Blvd., Suite 100, Dallas, TX 75218



(F)	(G)	(H)	(I)	(J)	(K)	(L)	(M)	(N)	(O)	(P)	(Q)	(R)	(S)	(T)	(U)	(V)	(W)	(X)	(Y)	(Z)	(AA)	(AB)	(AC)	(AD)	(AE)	(AF)	(AG)	(AH)	(AI)	(AJ)	(AK)	(AL)	(AM)	(AN)	(AO)	(AP)	(AQ)	(AR)	(AS)	(AT)	(AU)	(AV)	(AW)	(AX)	(AY)	(AZ)	(BA)	(BB)	(BC)	(BD)	(BE)	(BF)	(BG)	(BH)	(BI)	(BJ)	(BK)	(BL)	(BM)	(BN)	(BO)	(BP)	(BQ)	(BR)	(BS)	(BT)	(BU)	(BV)	(BW)	(BX)	(BY)	(BZ)	(CA)	(CB)	(CC)	(CD)	(CE)	(CF)	(CG)	(CH)	(CI)	(CJ)	(CK)	(CL)	(CM)	(CN)	(CO)	(CP)	(CQ)	(CR)	(CS)	(CT)	(CU)	(CV)	(CW)	(CX)	(CY)	(CZ)	(DA)	(DB)	(DC)	(DD)	(DE)	(DF)	(DG)	(DH)	(DI)	(DJ)	(DK)	(DL)	(DM)	(DN)	(DO)	(DP)	(DQ)	(DR)	(DS)	(DT)	(DU)	(DV)	(DW)	(DX)	(DY)	(DZ)	(EA)	(EB)	(EC)	(ED)	(EE)	(EF)	(EG)	(EH)	(EI)	(EJ)	(EK)	(EL)	(EM)	(EN)	(EO)	(EP)	(EQ)	(ER)	(ES)	(ET)	(EU)	(EV)	(EW)	(EX)	(EY)	(EZ)	(FA)	(FB)	(FC)	(FD)	(FE)	(FF)	(FG)	(FH)	(FI)	(FJ)	(FK)	(FL)	(FM)	(FN)	(FO)	(FP)	(FQ)	(FR)	(FS)	(FT)	(FU)	(FV)	(FW)	(FX)	(FY)	(FZ)	(GA)	(GB)	(GC)	(GD)	(GE)	(GF)	(GG)	(GH)	(GI)	(GJ)	(GK)	(GL)	(GM)	(GN)	(GO)	(GP)	(GQ)	(GR)	(GS)	(GT)	(GU)	(GV)	(GW)	(GX)	(GY)	(GZ)	(HA)	(HB)	(HC)	(HD)	(HE)	(HF)	(HG)	(HH)	(HI)	(HJ)	(HK)	(HL)	(HM)	(HN)	(HO)	(HP)	(HQ)	(HR)	(HS)	(HT)	(HU)	(HV)	(HW)	(HX)	(HY)	(HZ)	(IA)	(IB)	(IC)	(ID)	(IE)	(IF)	(IG)	(IH)	(II)	(IJ)	(IK)	(IL)	(IM)	(IN)	(IO)	(IP)	(IQ)	(IR)	(IS)	(IT)	(IU)	(IV)	(IW)	(IX)	(IY)	(IZ)	(JA)	(JB)	(JC)	(JD)	(JE)	(JF)	(JG)	(JH)	(JI)	(JJ)	(JK)	(JL)	(JM)	(JN)	(JO)	(JP)	(JQ)	(JR)	(JS)	(JT)	(JU)	(JV)	(JW)	(JX)	(JY)	(JZ)	(KA)	(KB)	(KC)	(KD)	(KE)	(KF)	(KG)	(KH)	(KI)	(KJ)	(KK)	(KL)	(KM)	(KN)	(KO)	(KP)	(KQ)	(KR)	(KS)	(KT)	(KU)	(KV)	(KW)	(KX)	(KY)	(KZ)	(LA)	(LB)	(LC)	(LD)	(LE)	(LF)	(LG)	(LH)	(LI)	(LJ)	(LK)	(LL)	(LM)	(LN)	(LO)	(LP)	(LQ)	(LR)	(LS)	(LT)	(LU)	(LV)	(LW)	(LX)	(LY)	(LZ)	(MA)	(MB)	(MC)	(MD)	(ME)	(MF)	(MG)	(MH)	(MI)	(MJ)	(MK)	(ML)	(MN)	(MO)	(MP)	(MQ)	(MR)	(MS)	(MT)	(MU)	(MV)	(MW)	(MX)	(MY)	(MZ)	(NA)	(NB)	(NC)	(ND)	(NE)	(NF)	(NG)	(NH)	(NI)	(NJ)	(NK)	(NL)	(NM)	(NN)	(NO)	(NP)	(NQ)	(NR)	(NS)	(NT)	(NU)	(NV)	(NW)	(NX)	(NY)	(NZ)	(OA)	(OB)	(OC)	(OD)	(OE)	(OF)	(OG)	(OH)	(OI)	(OJ)	(OK)	(OL)	(OM)	(ON)	(OO)	(OP)	(OQ)	(OR)	(OS)	(OT)	(OU)	(OV)	(OW)	(OX)	(OY)	(OZ)	(PA)	(PB)	(PC)	(PD)	(PE)	(PF)	(PG)	(PH)	(PI)	(PJ)	(PK)	(PL)	(PM)	(PN)	(PO)	(PP)	(PQ)	(PR)	(PS)	(PT)	(PU)	(PV)	(PW)	(PX)	(PY)	(PZ)	(QA)	(QB)	(QC)	(QD)	(QE)	(QF)	(QG)	(QH)	(QI)	(QJ)	(QK)	(QL)	(QM)	(QN)	(QO)	(QP)	(QQ)	(QR)	(QS)	(QT)	(QU)	(QV)	(QW)	(QX)	(QY)	(QZ)	(RA)	(RB)	(RC)	(RD)	(RE)	(RF)	(RG)	(RH)	(RI)	(RJ)	(RK)	(RL)	(RM)	(RN)	(RO)	(RP)	(RQ)	(RR)	(RS)	(RT)	(RU)	(RV)	(RW)	(RX)	(RY)	(RZ)	(SA)	(SB)	(SC)	(SD)	(SE)	(SF)	(SG)	(SH)	(SI)	(SJ)	(SK)	(SL)	(SM)	(SN)	(SO)	(SP)	(SQ)	(SR)	(SS)	(ST)	(SU)	(SV)	(SW)	(SX)	(SY)	(SZ)	(TA)	(TB)	(TC)	(TD)	(TE)	(TF)	(TG)	(TH)	(TI)	(TJ)	(TK)	(TL)	(TM)	(TN)	(TO)	(TP)	(TQ)	(TR)	(TS)	(TT)	(TU)	(TV)	(TW)	(TX)	(TY)	(TZ)	(UA)	(UB)	(UC)	(UD)	(UE)	(UF)	(UG)	(UH)	(UI)	(UJ)	(UK)	(UL)	(UM)	(UN)	(UO)	(UP)	(UQ)	(UR)	(US)	(UT)	(UU)	(UV)	(UW)	(UX)	(UY)	(UZ)	(VA)	(VB)	(VC)	(VD)	(VE)	(VF)	(VG)	(VH)
-----	-----	-----	-----	-----	-----	-----	-----	-----	-----	-----	-----	-----	-----	-----	-----	-----	-----	-----	-----	-----	------	------	------	------	------	------	------	------	------	------	------	------	------	------	------	------	------	------	------	------	------	------	------	------	------	------	------	------	------	------	------	------	------	------	------	------	------	------	------	------	------	------	------	------	------	------	------	------	------	------	------	------	------	------	------	------	------	------	------	------	------	------	------	------	------	------	------	------	------	------	------	------	------	------	------	------	------	------	------	------	------	------	------	------	------	------	------	------	------	------	------	------	------	------	------	------	------	------	------	------	------	------	------	------	------	------	------	------	------	------	------	------	------	------	------	------	------	------	------	------	------	------	------	------	------	------	------	------	------	------	------	------	------	------	------	------	------	------	------	------	------	------	------	------	------	------	------	------	------	------	------	------	------	------	------	------	------	------	------	------	------	------	------	------	------	------	------	------	------	------	------	------	------	------	------	------	------	------	------	------	------	------	------	------	------	------	------	------	------	------	------	------	------	------	------	------	------	------	------	------	------	------	------	------	------	------	------	------	------	------	------	------	------	------	------	------	------	------	------	------	------	------	------	------	------	------	------	------	------	------	------	------	------	------	------	------	------	------	------	------	------	------	------	------	------	------	------	------	------	------	------	------	------	------	------	------	------	------	------	------	------	------	------	------	------	------	------	------	------	------	------	------	------	------	------	------	------	------	------	------	------	------	------	------	------	------	------	------	------	------	------	------	------	------	------	------	------	------	------	------	------	------	------	------	------	------	------	------	------	------	------	------	------	------	------	------	------	------	------	------	------	------	------	------	------	------	------	------	------	------	------	------	------	------	------	------	------	------	------	------	------	------	------	------	------	------	------	------	------	------	------	------	------	------	------	------	------	------	------	------	------	------	------	------	------	------	------	------	------	------	------	------	------	------	------	------	------	------	------	------	------	------	------	------	------	------	------	------	------	------	------	------	------	------	------	------	------	------	------	------	------	------	------	------	------	------	------	------	------	------	------	------	------	------	------	------	------	------	------	------	------	------	------	------	------	------	------	------	------	------	------	------	------	------	------	------	------	------	------	------	------	------	------	------	------	------	------	------	------	------	------	------	------	------	------	------	------	------	------	------	------	------	------	------	------	------	------	------	------	------	------	------	------	------	------	------	------	------	------	------	------	------	------	------	------	------	------	------	------	------	------	------	------	------	------	------	------	------	------	------	------	------	------	------	------	------	------	------	------	------	------	------	------	------	------	------	------	------	------	------	------	------	------	------	------	------	------	------	------	------	------	------	------	------	------	------	------	------	------	------	------	------	------	------	------	------	------	------	------	------	------	------	------

R. D. S. O.

LADDER 5.5 M

(FOR COLOUR LIGHT SIGNAL)

- MULTI UNIT TYPE)

STAN 1	-	-	-	-
CANC 2	-	-	-	-
REV 3	-	-	-	-
SA 23156				
				(ADVANCE)
8.2.65				ADVANCE

SPEC	IRIS-110		
SCALE	WILLYMETRES 100 200 300 400 1 2 3 4		
		1. FIRST LIST VIEW & NOTE	PLA 19
		2. 2 ANGLES AND NOTE	
		3. 3 DELETED.	
		ACT	DESCRIPTION
			DATE



3. ALL DIMENSIONS IN MILLIMETERS.

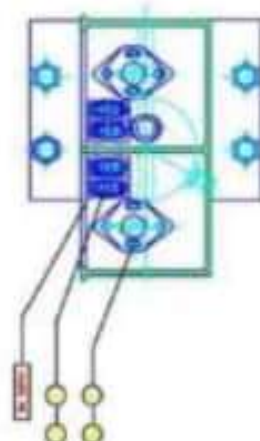
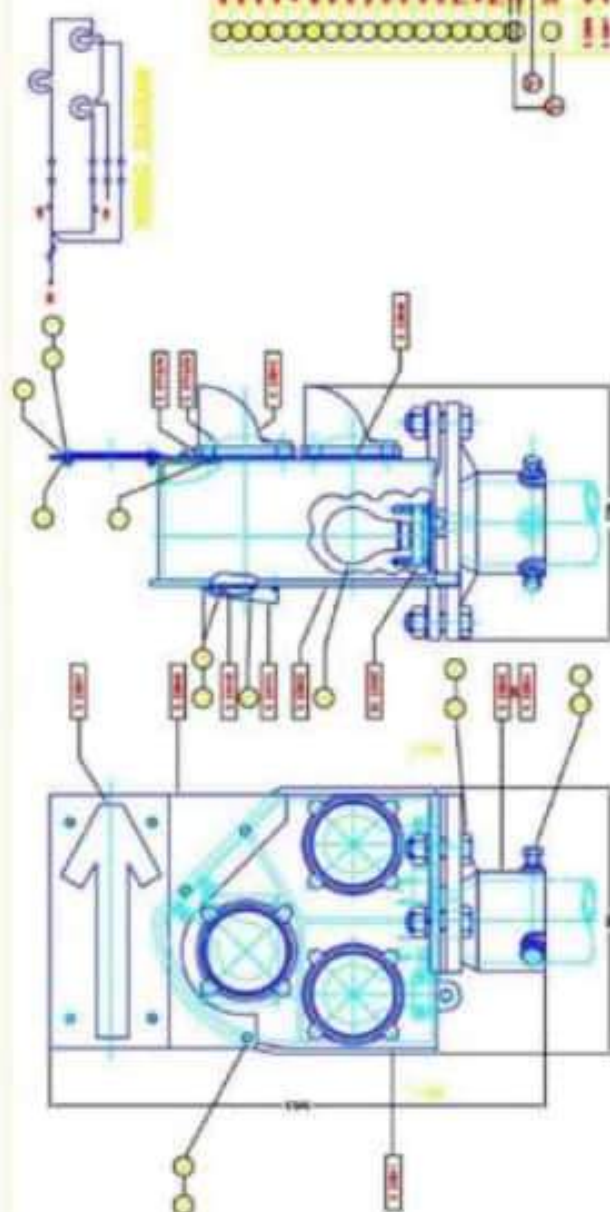
2. PAINTED ALL OVER EXCEPT ON THE NUMBER PLATE TWO REPAIR COATS,
ONE OF ZINC CHARGE TO TO 174, FOLLOWED BY ANOTHER OF RED OXIDE CHARGE
TO 16,2254 AND A FINISHING COAT OF BLACK BLACK PAINT TO 02,12.

—A good example of this is the fact that the number of people who have been killed in the last 10 years in the United States is less than the number of people who have been killed in the last 10 years in the United Kingdom.

© 1997 by The McGraw-Hill Companies, Inc. All rights reserved. Printed in the United States of America. This publication is protected by copyright. Any unauthorized distribution or reproduction of this work is prohibited. For more information, contact The McGraw-Hill Companies, Inc., 1221 Avenue of the Americas, New York, NY 10020-1346.

3. All respondents are well informed.

11

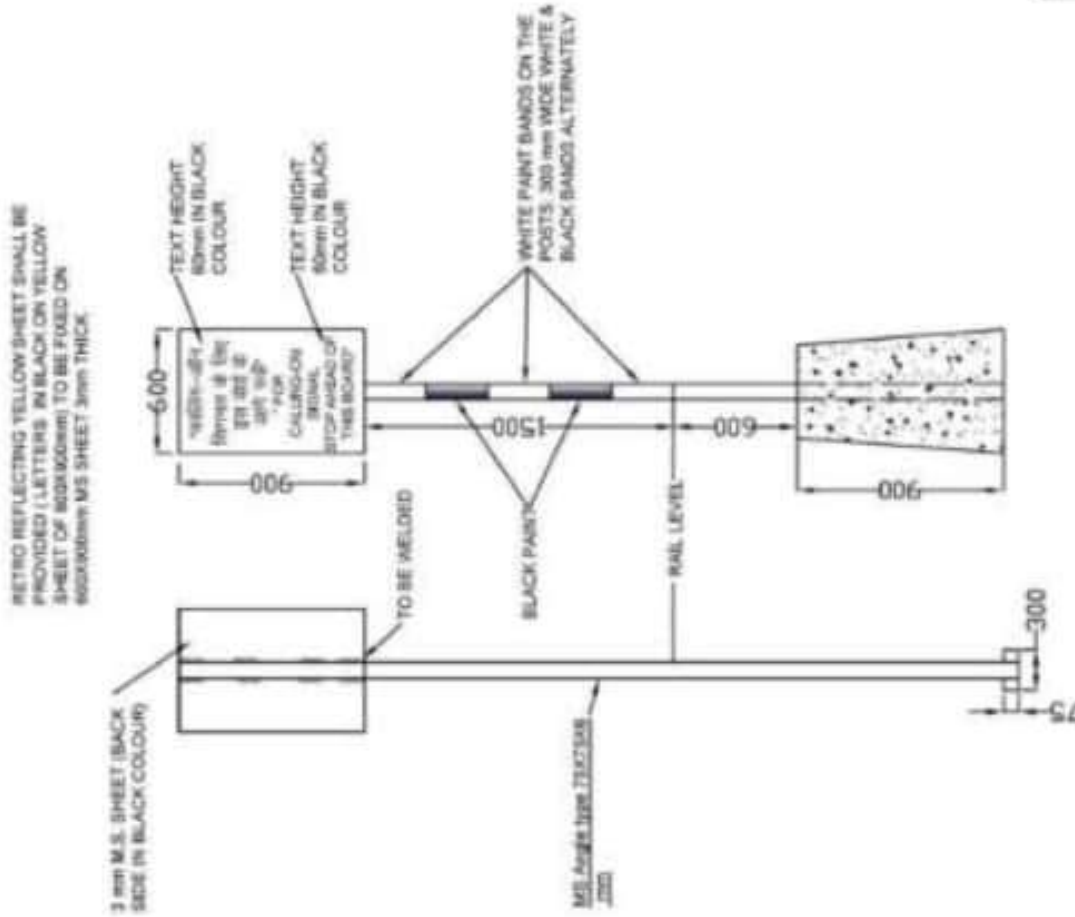




NOTE :-

1. In case Channel Post is used the dimensions of 'A' will be 300 and if Nail Post is used the dimension of 'A' will be 400
2. Foundation with mixture of cement, sand and stone chips, Size: 20 (1:3:6)
3. All Dimensions in mm

E.R.	CHECKED		APPROVED	FOUNDATION FOR BLOCK SECTION LIMIT BOARD / SHUNTING LIMIT BOARD / SIGHTING BOARD.	DRG. No. SMT/C-34 (1978)
		<i>Sanjay</i>			
		<i>15.4.78</i>			



1. ALL DIMENSIONS ARE IN MILLIMETRES.

2. CALLING ON SIGNAL BOARD IS TO BE ERRECTED AT THE START OF THE CALLING OF THE TRACK CIRCUIT JOINT IN REAR OF HOME SIGNAL.

THIS DRAWING IS THE PROPERTY OF RDSO AND IS NOT TO BE REPRODUCED OR USED FOR ANY OTHER PURPOSE WITHOUT THE WRITTEN PERMISSION OF RDSO. ANY VIOLATION OF THIS CONDITION IS SUBJECT TO LEGAL ACTION.

R. D. S. O.

कालिंग-ऑन बोर्ड

CALLING-ON BOARD

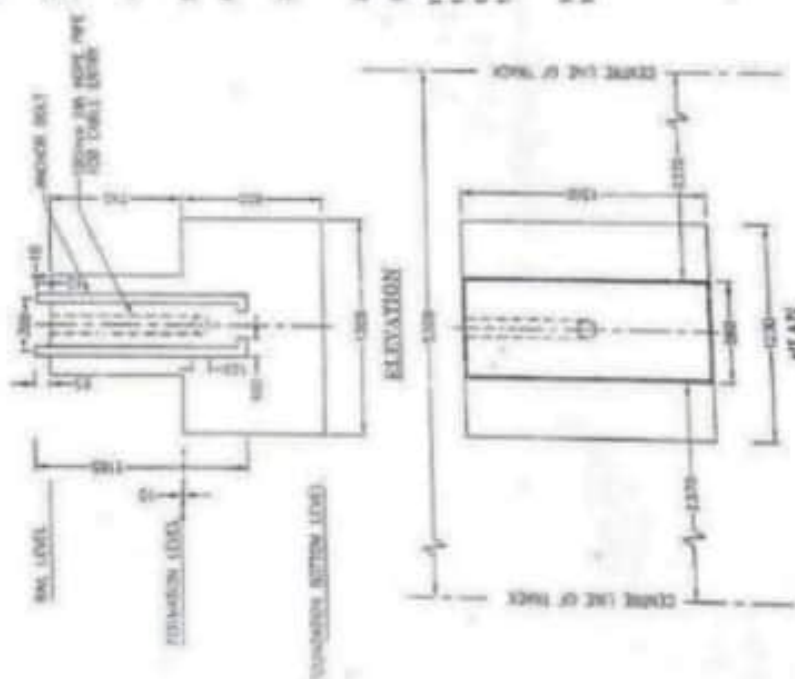
SDO/S&T/CALLING-ON BOARD /1020

PREPARED BY	REVIEWED BY	CHECKED BY	ISSUED BY	DATE	DESCRIPTION	SCALE	ALT
				23.07.25		NOT TO SCALE	

NOTE

NOTES:

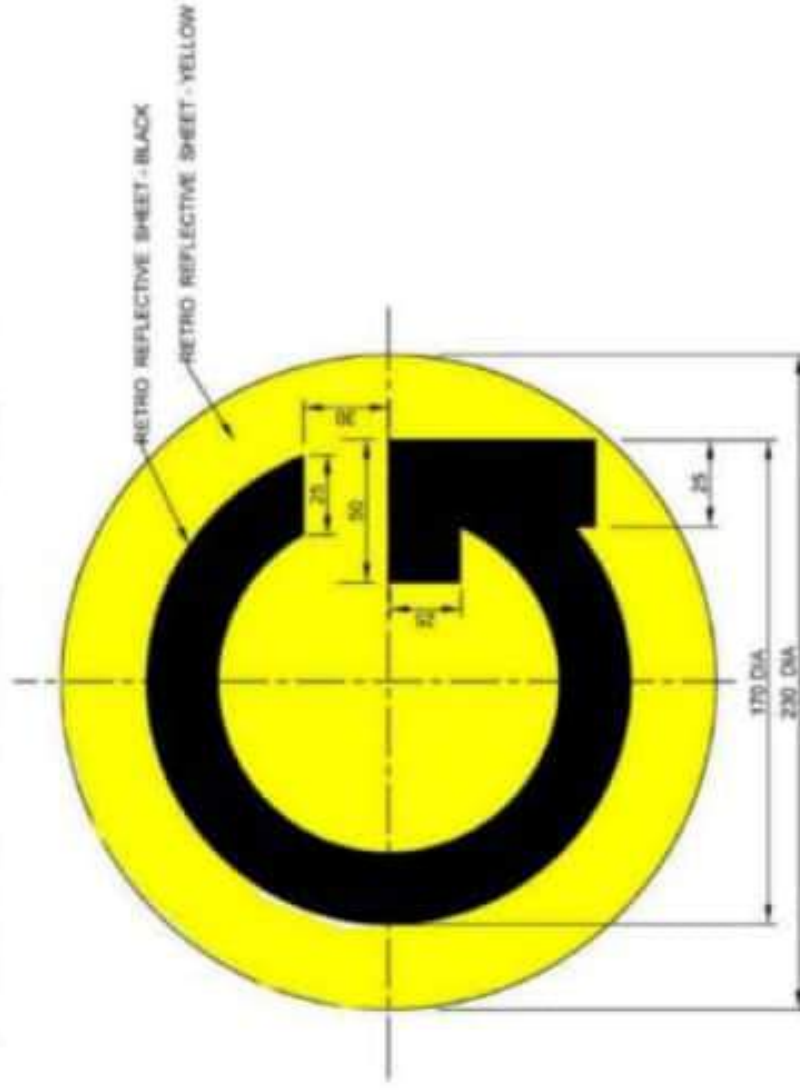
1. CORING OF PILES TO BE DONE IN THE CONCRETE WITH CARE USING THE MEASUREMENTS OF THE SURFACE AND CIRCLES AND RECORD THE RESULTS OF THE SURFACE AND CIRCLES WITH EACH LOCATION OF THE PILE.
2. THE PILE SHALL BE 18" DIAMETER WITH 18" DIA. CORE.
3. AFTER CORING OF PILE AND CIRCLES OF THE PILE IS DONE, THE PILE SHALL BE CURED FOR 28 DAYS. ALL THE PILES SHALL BE CURED FOR 28 DAYS.
4. THE PILES SHALL BE CURED FOR 28 DAYS.
5. THE PILES SHALL BE CURED FOR 28 DAYS.
6. THE PILES SHALL BE CURED FOR 28 DAYS.
7. THE PILES SHALL BE CURED FOR 28 DAYS.
8. THE PILES SHALL BE CURED FOR 28 DAYS.
9. THE PILES SHALL BE CURED FOR 28 DAYS.
10. THE PILES SHALL BE CURED FOR 28 DAYS.
11. THE PILES SHALL BE CURED FOR 28 DAYS.
12. THE PILES SHALL BE CURED FOR 28 DAYS.
13. THE PILES SHALL BE CURED FOR 28 DAYS.
14. THE PILES SHALL BE CURED FOR 28 DAYS.
15. THE PILES SHALL BE CURED FOR 28 DAYS.



PROJECT NO.	RD50/M-00011/24
DATE	12-11-2014
DESIGNED BY	H. D. S. O.
CHECKED BY	H. D. S. O.
APPROVED BY	H. D. S. O.

PROJECT NO.	RD50/M-00011/24
DATE	12-11-2014
DESIGNED BY	H. D. S. O.
CHECKED BY	H. D. S. O.
APPROVED BY	H. D. S. O.

"G" MARKER RETRO REFLECTIVE SHEET



MATERIAL >

RETRO REFLECTIVE SHEET HIGH INTENSITY GRADE YELLOW WITH

IMPRINTED 'G' IN BLACK

WITH FILM THICKNESS 0.3 mm

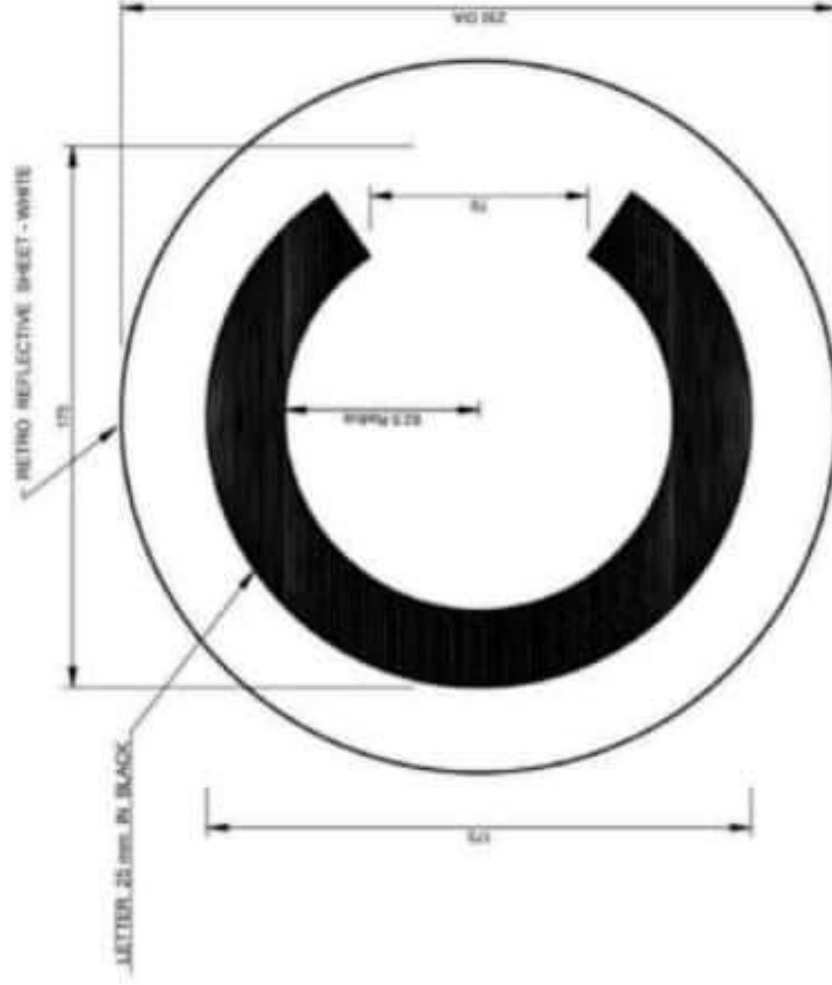
TOLERANCE AS PER APPLICABLE

NOTE :- ALL DIMENSIONS ARE IN mm

PRINT IN COLOUR

FOR GUIDANCE

"C" MARKER RETRO REFLECTIVE SHEET

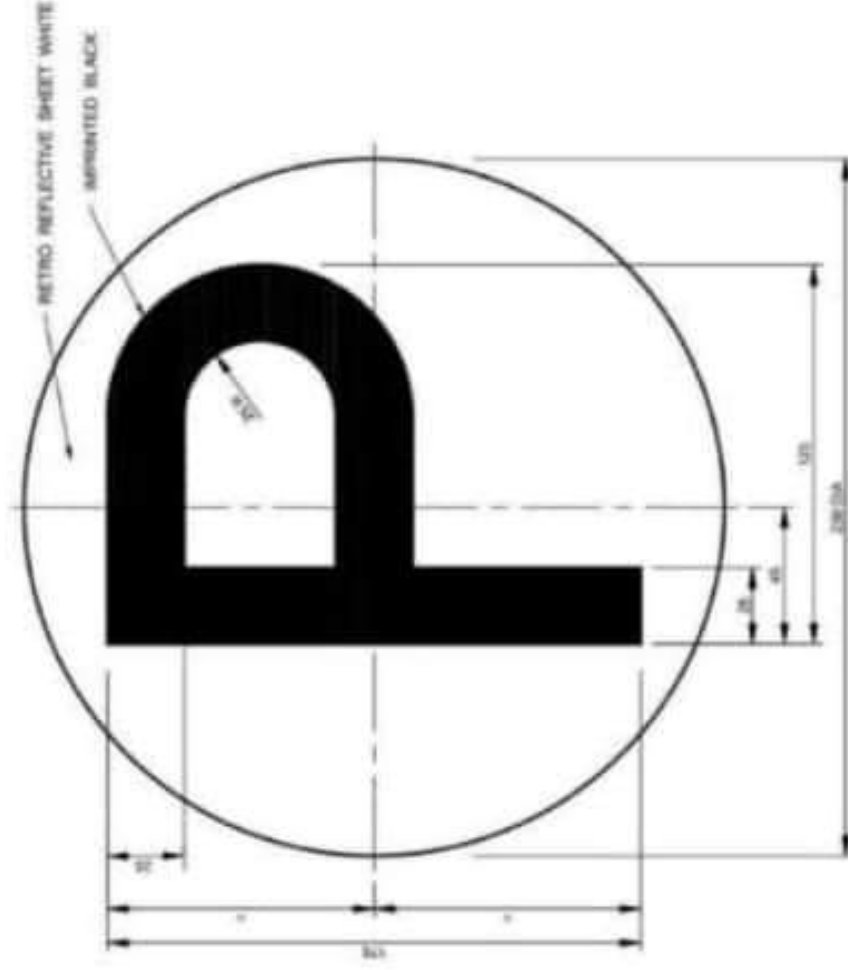


MATERIAL :-

RETRO REFLECTIVE SHEET HIGH INTENSITY GRADE WHITE WITH
 IMPRINTED 'C' IN BLACK
 WITH FILM THICKNESS 0.3 mm
 TOLERANCE AS PER APPLICABLE
 NOTE :- ALL DIMENSIONS ARE IN mm

FOR GUIDANCE

"P" MARKER RETRO REFLECTIVE SHEET



MATERIAL :-

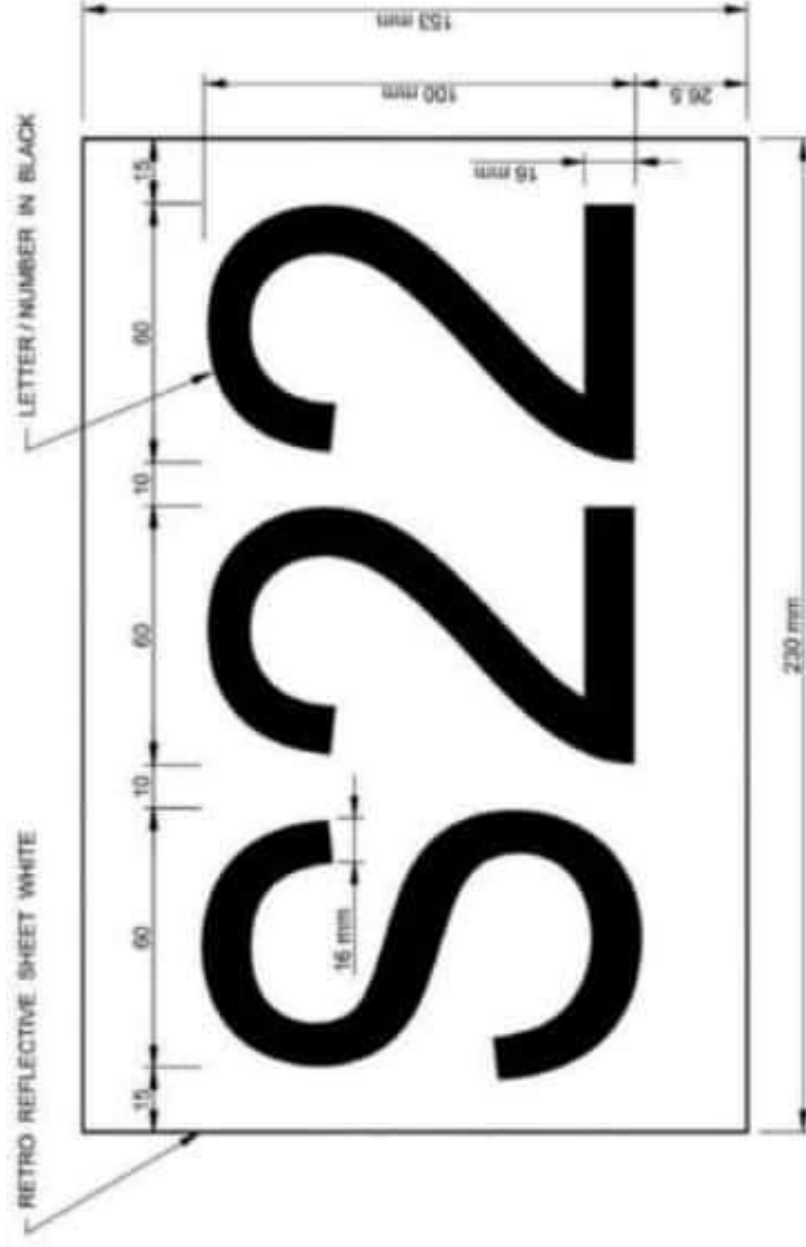
RETRO REFLECTIVE SHEET HIGH INTENSITY GRADE WHITE WITH
IMPRINTED 'P' IN BLACK
WITH FILM THICKNESS 0.3 mm

TOLERANCE AS PER APPLICABLE

NOTE :- ALL DIMENSIONS ARE IN mm

FOR GUIDANCE

SIGNAL NUMBER PLATE (DOUBLE DIGIT) RETRO REFLECTIVE SHEET



MATERIALS

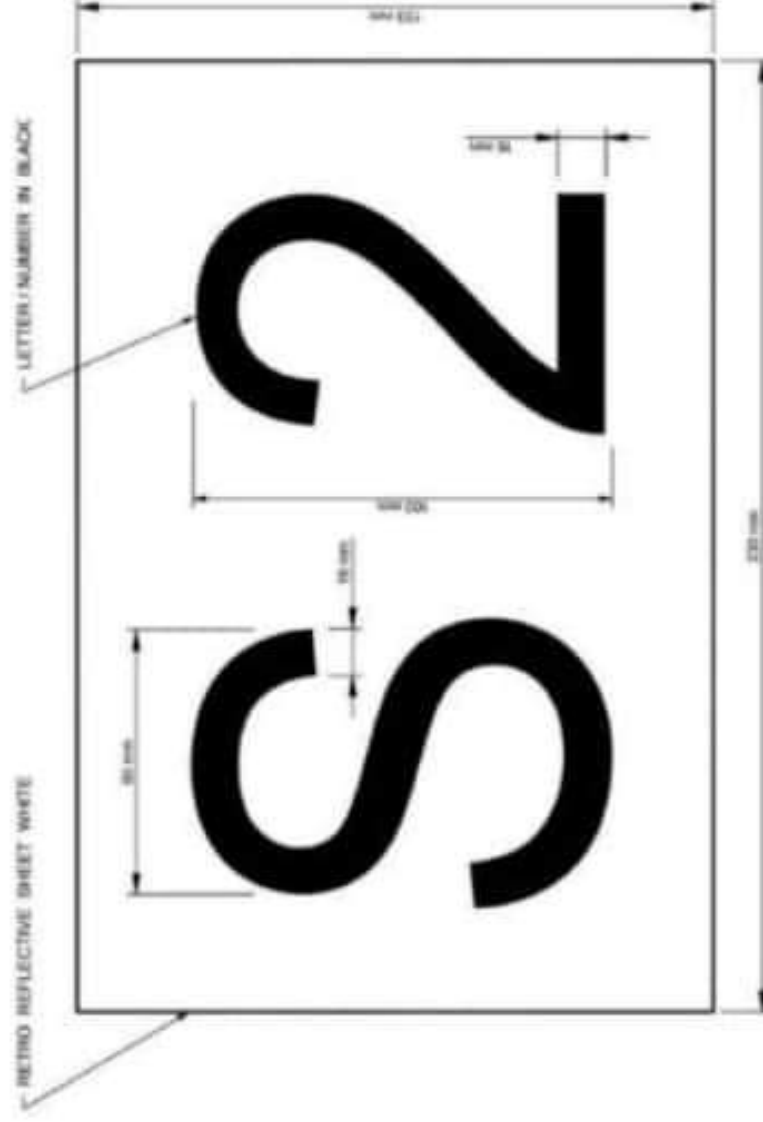
PRESSURE SENSITIVE TYPE RETRO REFLECTIVE SHEET HIGH INTENSITY
GRADE WHITE WITH IMPRINTED NUMBER / ALPHABET IN BLACK
WITH FILM THICKNESS 0.3 mm

TOLERANCE AS PER APPLICABLE

NOTE: ALL DIMENSIONS ARE IN mm

FOR GUIDANCE

SIGNAL NUMBER PLATE RETRO REFLECTIVE SHEET

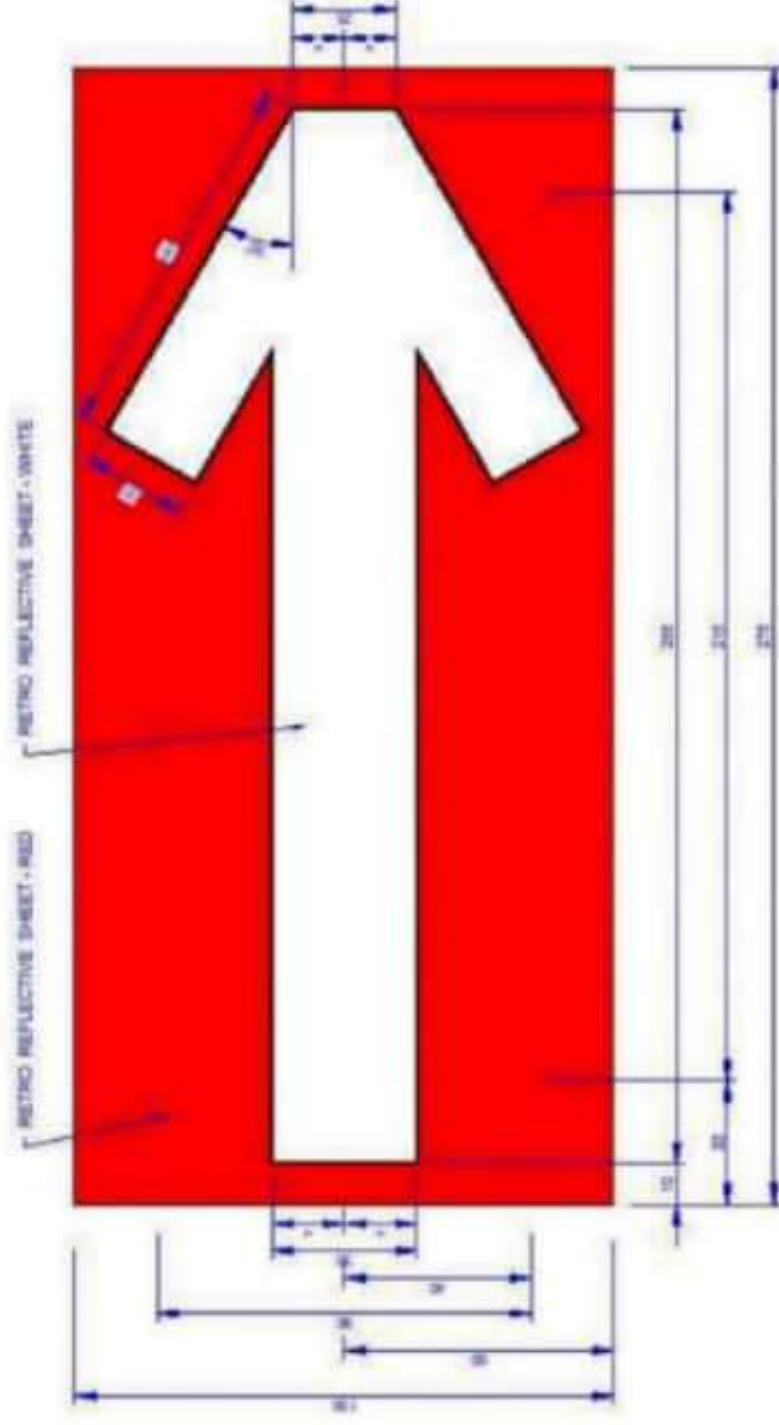


MATERIAL >

PRESSURE SENSITIVE TYPE RETRO REFLECTIVE SHEET HIGH INTENSITY
GRADE WHITE WITH IMPRINTED NUMBER / ALPHABET IN BLACK
WITH FILM THICKNESS 0.3 mm
TOLERANCE AS PER APPLICABLE
NOTE > ALL DIMENSIONS ARE IN mm

FOR GUIDANCE

ARROW MARKER RETRO REFLECTIVE SHEET



MATERIALS

RETRO REFLECTIVE SHEET HIGH INTENSITY GRADE RED WITH
IMPRINTED "ARROW" IN WHITE
WITH FILM THICKNESS 0.3 mm

WITH FILM THICKNESS 0.3 mm
TOLERANCE AS PER APPLICABLE

NOTE: ALL DIMENSIONS ARE IN mm

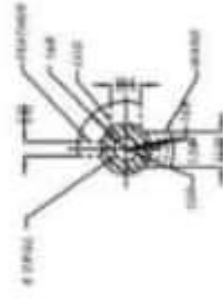
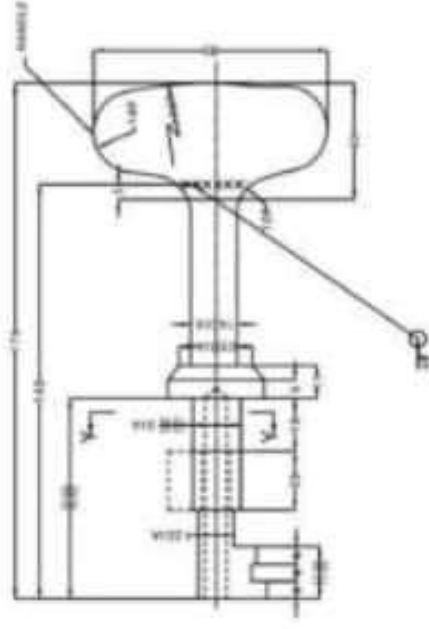
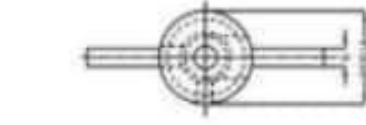
PRINT IN COLOUR

FOR GUIDANCE

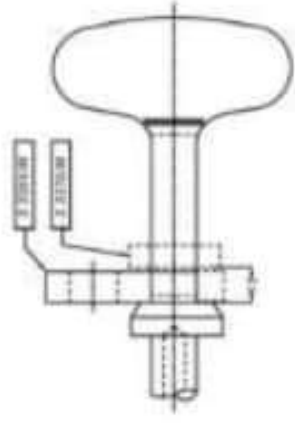
S&T Drawing

Chapter - 9

Level Crossing Gates & accessories etc.



SECTION YY



SKETCH 'A'

1. HANDLE SHALL BE WELDED SEPARATELY & KEYS OF THE KEY SHALL BE TURNED OUT FROM HOLDING BAR & THE KEY IS TO BE TURNED WITH THE LOCK KEY IN THE LOCKING POSITION. THE KEY SHALL BE WELDED INTO THE LOCKING POSITION AS SHOWN IN SECTION 'X' IN LINE WITH THE KEY HANDLE & KEYS.
2. THE TYPE OF BAR ON THE KEY SHALL ALSO BE AS SPECIFIED BY THE DRAWING NO. 21041-01.
3. ALL DIMENSIONS SHALL BE WITHIN ± 0.5 UNLESS OTHERWISE SPECIFIED.
4. THE KEY SHALL BE TURNED OUT FROM THE LOCKING POSITION BY THE KEY HANDLE & KEYS.
5. THE KEY SHALL BE TURNED OUT FROM THE LOCKING POSITION BY THE KEY HANDLE & KEYS.
6. THE KEY SHALL BE TURNED OUT FROM THE LOCKING POSITION BY THE KEY HANDLE & KEYS.
7. THE KEY SHALL BE TURNED OUT FROM THE LOCKING POSITION BY THE KEY HANDLE & KEYS.
8. THE KEY SHALL BE TURNED OUT FROM THE LOCKING POSITION BY THE KEY HANDLE & KEYS.
9. THE KEY SHALL BE TURNED OUT FROM THE LOCKING POSITION BY THE KEY HANDLE & KEYS.
10. THE KEY SHALL BE TURNED OUT FROM THE LOCKING POSITION BY THE KEY HANDLE & KEYS.

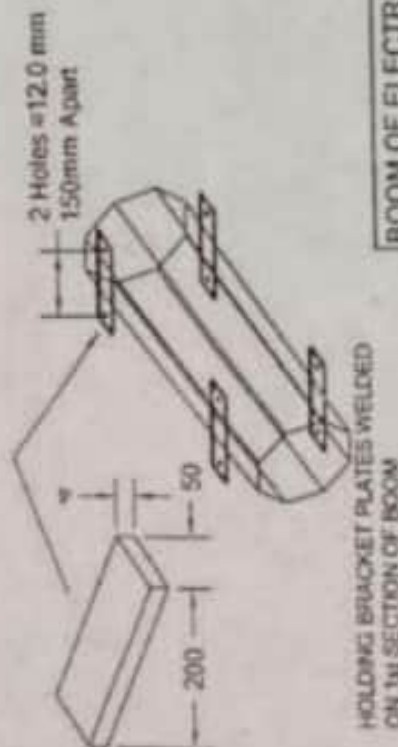
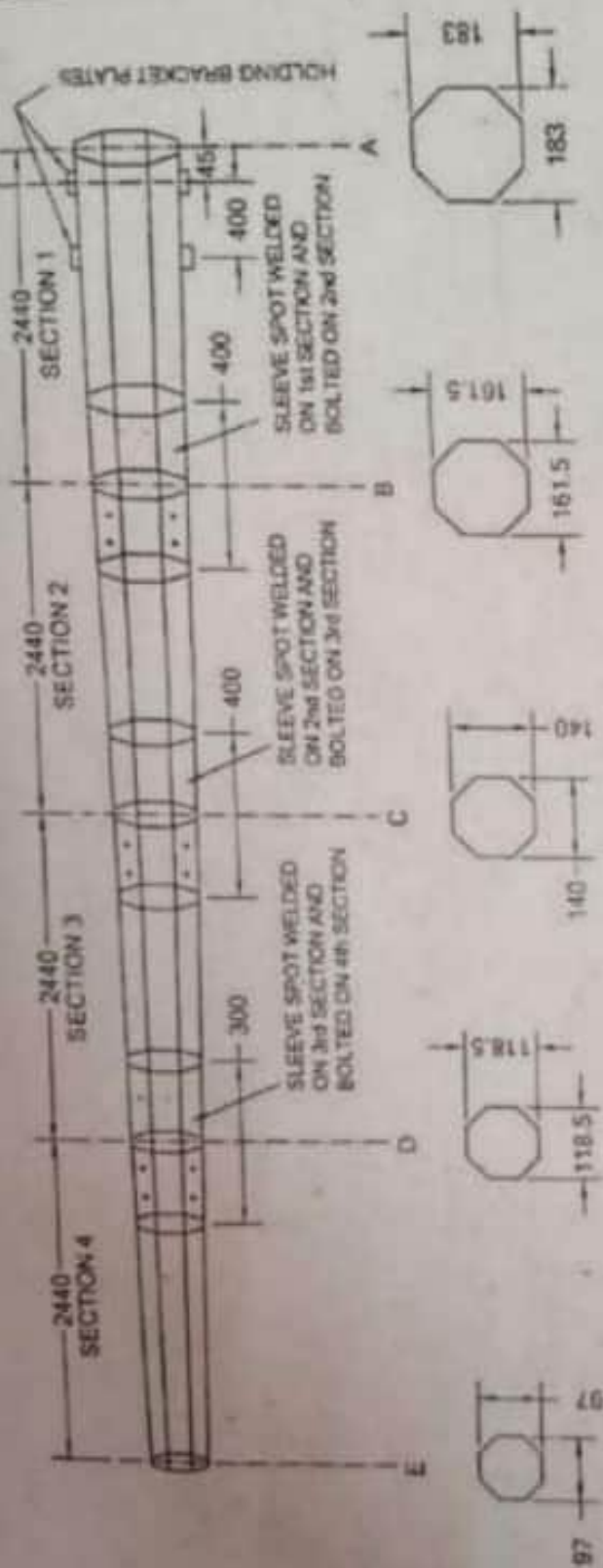
REV	DESCRIPTION	DATE
1	KEY LOCK (E-TYPE) KEY	
2	R. D. S. O.	
3	KEY LOCK (E-TYPE) KEY	
4	R. D. S. O.	
5	KEY LOCK (E-TYPE) KEY	
6	R. D. S. O.	
7	KEY LOCK (E-TYPE) KEY	
8	R. D. S. O.	
9	KEY LOCK (E-TYPE) KEY	
10	R. D. S. O.	

REV	DESCRIPTION	DATE
1	KEY LOCK (E-TYPE) KEY	
2	R. D. S. O.	
3	KEY LOCK (E-TYPE) KEY	
4	R. D. S. O.	
5	KEY LOCK (E-TYPE) KEY	
6	R. D. S. O.	
7	KEY LOCK (E-TYPE) KEY	
8	R. D. S. O.	
9	KEY LOCK (E-TYPE) KEY	
10	R. D. S. O.	

REV	DESCRIPTION	DATE
1	KEY LOCK (E-TYPE) KEY	
2	R. D. S. O.	
3	KEY LOCK (E-TYPE) KEY	
4	R. D. S. O.	
5	KEY LOCK (E-TYPE) KEY	
6	R. D. S. O.	
7	KEY LOCK (E-TYPE) KEY	
8	R. D. S. O.	
9	KEY LOCK (E-TYPE) KEY	
10	R. D. S. O.	

NOTE

SECTION X-X (REFER TO SHEET 2 OF 2)



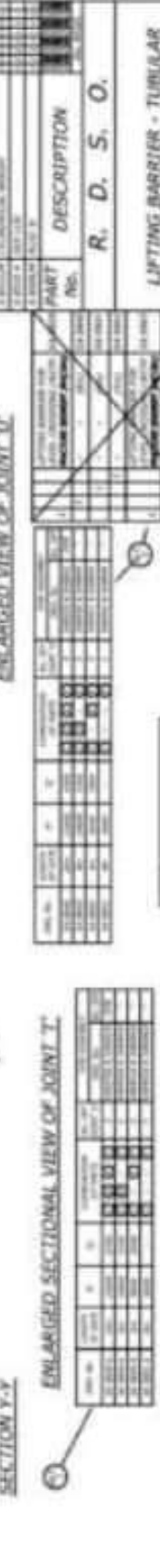
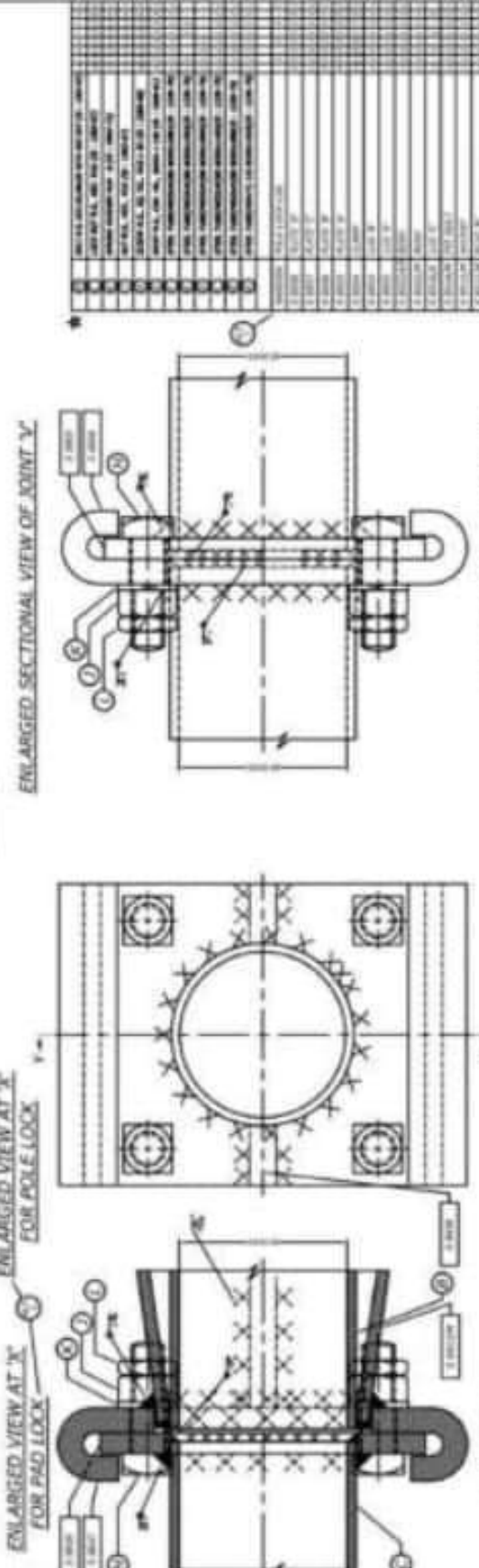
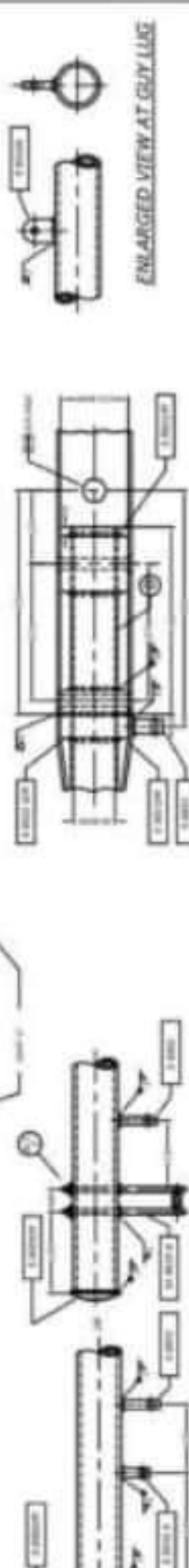
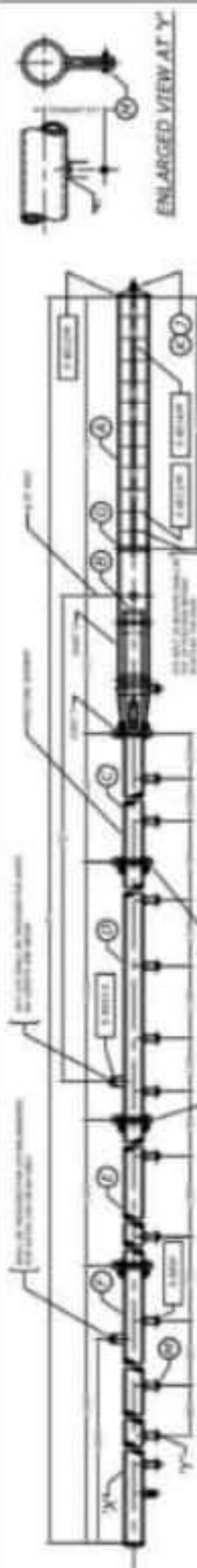
PAINTING	
Golden Yellow Powder Coating followed by Black 300 mm Bands with Brush Painting Yellow Reflective Tape to be fixed on all front & back faces of Yellow Bands of boom	
HOLDING BRACKET PLATES	
Total	4 Nos.
Material	IS-2062
BOLTS & NUTS	
Total	24 Nos.
Material	SS-302
Size	M16 x 12mm
SHEET THICKNESS	
1st Section	20 Gauge
2nd Section	22 Gauge
3rd Section	22 Gauge
4th Section	22 Gauge

BOOM OF ELECTRIC LIFTING BARRIER		
DATE: 11/11/11	DESIGN: 11500 SH 1 OF 2	
DRAWING NO.		

DRN BY: *Shy K* 2.10.11

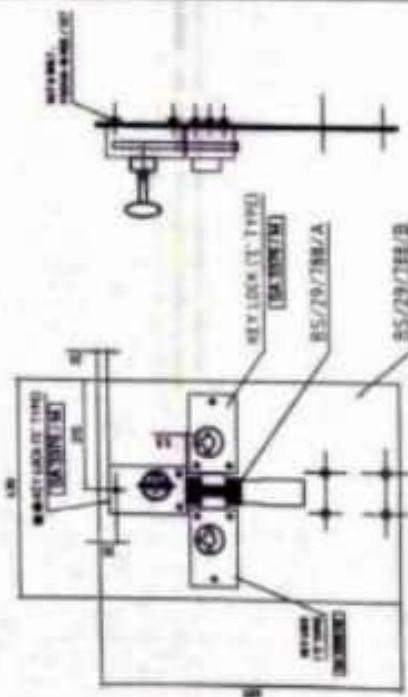
CHK BY: *Shy K*

DATE: 2.10.11



REV.	DATE	DESCRIPTION	BY	CHKD.
1	10/1/78	ISSUED FOR FABRICATION	J. D. S. O.	
2	10/1/78	REVISION	J. D. S. O.	
3	10/1/78	REVISION	J. D. S. O.	
4	10/1/78	REVISION	J. D. S. O.	
5	10/1/78	REVISION	J. D. S. O.	
6	10/1/78	REVISION	J. D. S. O.	
7	10/1/78	REVISION	J. D. S. O.	
8	10/1/78	REVISION	J. D. S. O.	
9	10/1/78	REVISION	J. D. S. O.	
10	10/1/78	REVISION	J. D. S. O.	
11	10/1/78	REVISION	J. D. S. O.	
12	10/1/78	REVISION	J. D. S. O.	
13	10/1/78	REVISION	J. D. S. O.	
14	10/1/78	REVISION	J. D. S. O.	
15	10/1/78	REVISION	J. D. S. O.	
16	10/1/78	REVISION	J. D. S. O.	
17	10/1/78	REVISION	J. D. S. O.	
18	10/1/78	REVISION	J. D. S. O.	
19	10/1/78	REVISION	J. D. S. O.	
20	10/1/78	REVISION	J. D. S. O.	
21	10/1/78	REVISION	J. D. S. O.	
22	10/1/78	REVISION	J. D. S. O.	
23	10/1/78	REVISION	J. D. S. O.	
24	10/1/78	REVISION	J. D. S. O.	
25	10/1/78	REVISION	J. D. S. O.	
26	10/1/78	REVISION	J. D. S. O.	
27	10/1/78	REVISION	J. D. S. O.	
28	10/1/78	REVISION	J. D. S. O.	
29	10/1/78	REVISION	J. D. S. O.	
30	10/1/78	REVISION	J. D. S. O.	
31	10/1/78	REVISION	J. D. S. O.	
32	10/1/78	REVISION	J. D. S. O.	
33	10/1/78	REVISION	J. D. S. O.	
34	10/1/78	REVISION	J. D. S. O.	
35	10/1/78	REVISION	J. D. S. O.	
36	10/1/78	REVISION	J. D. S. O.	
37	10/1/78	REVISION	J. D. S. O.	
38	10/1/78	REVISION	J. D. S. O.	
39	10/1/78	REVISION	J. D. S. O.	
40	10/1/78	REVISION	J. D. S. O.	
41	10/1/78	REVISION	J. D. S. O.	
42	10/1/78	REVISION	J. D. S. O.	
43	10/1/78	REVISION	J. D. S. O.	
44	10/1/78	REVISION	J. D. S. O.	
45	10/1/78	REVISION	J. D. S. O.	
46	10/1/78	REVISION	J. D. S. O.	
47	10/1/78	REVISION	J. D. S. O.	
48	10/1/78	REVISION	J. D. S. O.	
49	10/1/78	REVISION	J. D. S. O.	
50	10/1/78	REVISION	J. D. S. O.	
51	10/1/78	REVISION	J. D. S. O.	
52	10/1/78	REVISION	J. D. S. O.	
53	10/1/78	REVISION	J. D. S. O.	
54	10/1/78	REVISION	J. D. S. O.	
55	10/1/78	REVISION	J. D. S. O.	
56	10/1/78	REVISION	J. D. S. O.	
57	10/1/78	REVISION	J. D. S. O.	
58	10/1/78	REVISION	J. D. S. O.	
59	10/1/78	REVISION	J. D. S. O.	
60	10/1/78	REVISION	J. D. S. O.	
61	10/1/78	REVISION	J. D. S. O.	
62	10/1/78	REVISION	J. D. S. O.	
63	10/1/78	REVISION	J. D. S. O.	
64	10/1/78	REVISION	J. D. S. O.	
65	10/1/78	REVISION	J. D. S. O.	
66	10/1/78	REVISION	J. D. S. O.	
67	10/1/78	REVISION	J. D. S. O.	
68	10/1/78	REVISION	J. D. S. O.	
69	10/1/78	REVISION	J. D. S. O.	
70	10/1/78	REVISION	J. D. S. O.	
71	10/1/78	REVISION	J. D. S. O.	
72	10/1/78	REVISION	J. D. S. O.	
73	10/1/78	REVISION	J. D. S. O.	
74	10/1/78	REVISION	J. D. S. O.	
75	10/1/78	REVISION	J. D. S. O.	
76	10/1/78	REVISION	J. D. S. O.	
77	10/1/78	REVISION	J. D. S. O.	
78	10/1/78	REVISION	J. D. S. O.	
79	10/1/78	REVISION	J. D. S. O.	
80	10/1/78	REVISION	J. D. S. O.	
81	10/1/78	REVISION	J. D. S. O.	
82	10/1/78	REVISION	J. D. S. O.	
83	10/1/78	REVISION	J. D. S. O.	
84	10/1/78	REVISION	J. D. S. O.	
85	10/1/78	REVISION	J. D. S. O.	
86	10/1/78	REVISION	J. D. S. O.	
87	10/1/78	REVISION	J. D. S. O.	
88	10/1/78	REVISION	J. D. S. O.	
89	10/1/78	REVISION	J. D. S. O.	
90	10/1/78	REVISION	J. D. S. O.	
91	10/1/78	REVISION	J. D. S. O.	
92	10/1/78	REVISION	J. D. S. O.	
93	10/1/78	REVISION	J. D. S. O.	
94	10/1/78	REVISION	J. D. S. O.	
95	10/1/78	REVISION	J. D. S. O.	
96	10/1/78	REVISION	J. D. S. O.	
97	10/1/78	REVISION	J. D. S. O.	
98	10/1/78	REVISION	J. D. S. O.	
99	10/1/78	REVISION	J. D. S. O.	
100	10/1/78	REVISION	J. D. S. O.	

SA 6848-51 & SA 6848A-51A



ELEVATION VIEW



TOP VIEW

BOOM LOCKING ARRANGEMENT

NOTE:

1. ALL DIMENSIONS ARE IN MILLIMETRES.
2. SURFACE FINISH (FINE) ALL OVER.
3. LIMITS OF DIMENSIONS SHALL BE AS PER IS 10-79 (A1987).

ITEM NO.	DESCRIPTION	QTY	UNIT
1	BOOM LOCKING PLATE	1	PC
2	LOCK MOUNTING PLATE	1	PC
3	LOCK MOUNTING PLATE	1	PC
4	LOCK MOUNTING PLATE	1	PC
5	LOCK MOUNTING PLATE	1	PC
6	LOCK MOUNTING PLATE	1	PC
7	LOCK MOUNTING PLATE	1	PC
8	LOCK MOUNTING PLATE	1	PC
9	LOCK MOUNTING PLATE	1	PC
10	LOCK MOUNTING PLATE	1	PC

FOR ASSEMBLY

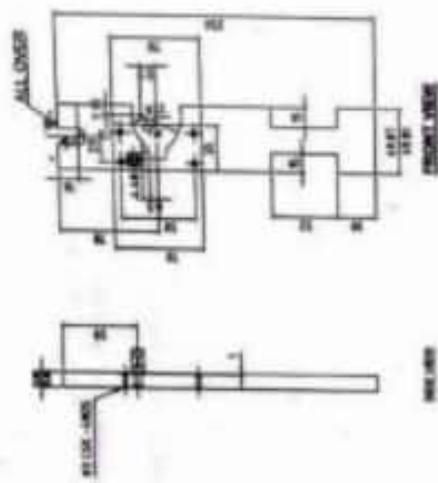
DRG. NO. SW / SA / 29 / 706

SIGNAL WORKSHOP / ER / HOWRAH.

SLIDING BOOM (RECTANGULAR SECTION) - LC GATE

DRG. NO. SW / SA / 29 / 706

SHEET: 21 OF 21



ELEVATION VIEW



TOP VIEW

NOTE:

1. ALL DIMENSIONS ARE IN MILLIMETRES.
2. SURFACE FINISH (FINE) ALL OVER.
3. LIMITS OF DIMENSIONS SHALL BE AS PER IS 10-79 (A1987).

ITEM NO.	DESCRIPTION	QTY	UNIT
1	BOOM LOCKING PLATE	1	PC
2	LOCK MOUNTING PLATE	1	PC
3	LOCK MOUNTING PLATE	1	PC
4	LOCK MOUNTING PLATE	1	PC
5	LOCK MOUNTING PLATE	1	PC
6	LOCK MOUNTING PLATE	1	PC
7	LOCK MOUNTING PLATE	1	PC
8	LOCK MOUNTING PLATE	1	PC
9	LOCK MOUNTING PLATE	1	PC
10	LOCK MOUNTING PLATE	1	PC

FOR ASSEMBLY

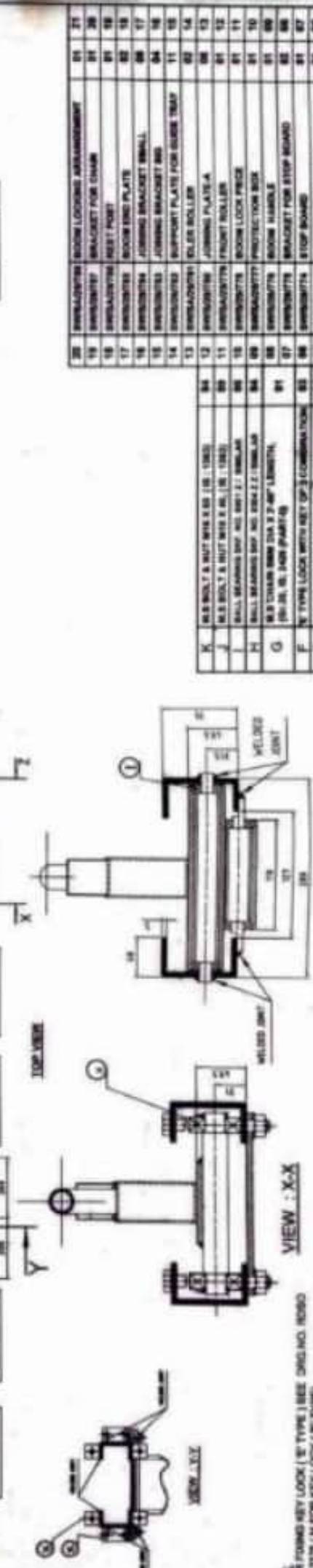
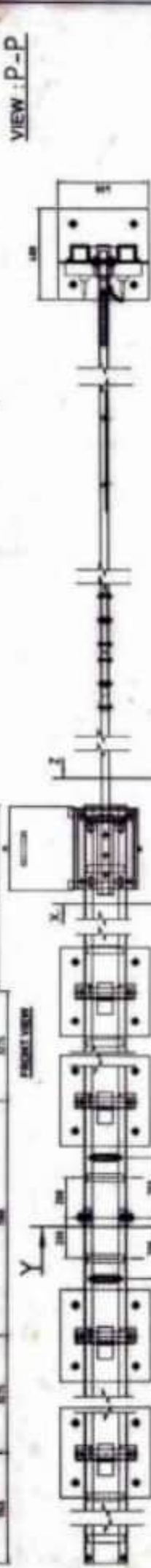
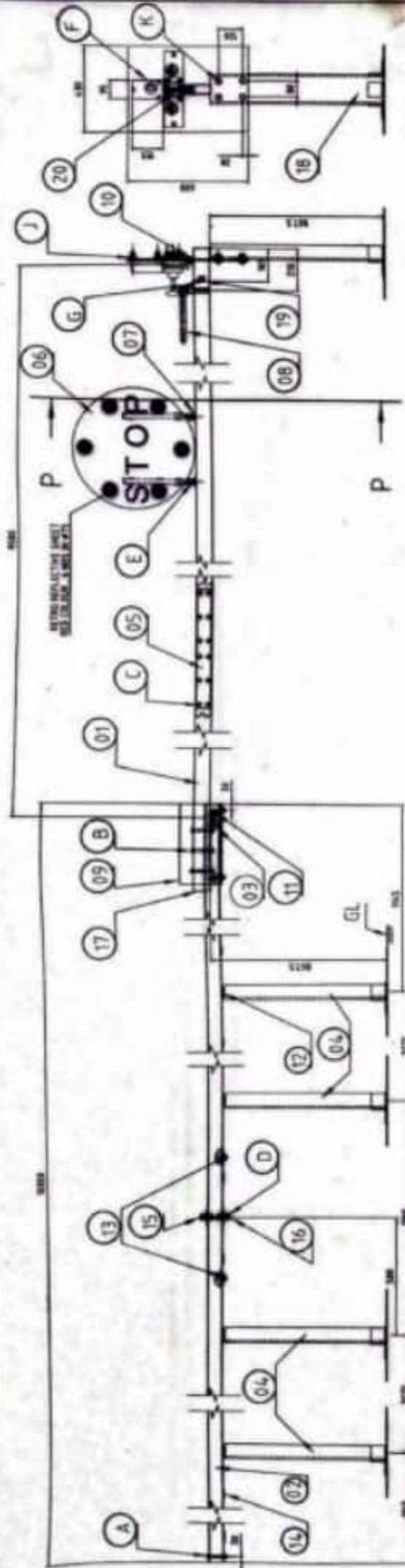
DRG. NO. SW / SA / 29 / 706 / A

SIGNAL WORKSHOP / ER / HOWRAH.

SLIDING BOOM (RECTANGULAR SECTION) - LC GATE

DRG. NO. SW / SA / 29 / 706

SHEET: 21 OF 21



APPROVED	VERIFIED	CHECKED	DRAWN	SPEC :	IRS : S10	SCALE :	DO NOT SCALE
DATE / FILE / TYPE	DATE / FILE / TYPE	DATE / FILE / TYPE	DATE / FILE / TYPE				

SIGNAL WORKSHOP / ER / HOWRAH.

SLIDING BOOM (RECTANGULAR SECTION) - LC GATE

DRG. NO. SW / SA / 29/768

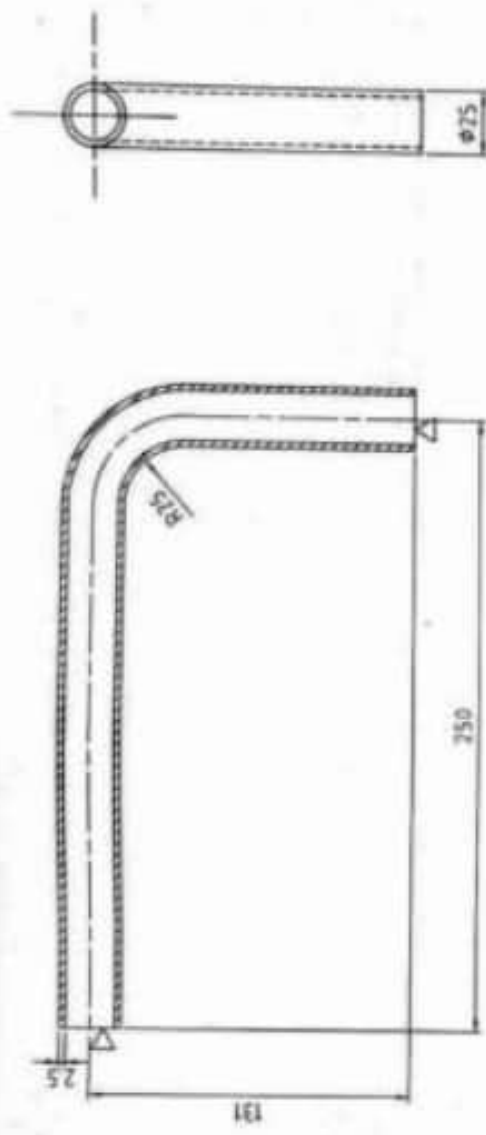
SHEET:1 OF 21

- NOTE:
- FOR USING KEY LOCK ('E' TYPE) SEE DRG NO. 20500
 - SA 2238 / M FOR KEY LOCK ('E' TYPE)
 - METALLIC ARC WELDING SHALL BE USED WHEREVER REQUIRED.
 - PAINTING SHALL BE DONE AS FOLLOWS :
 - BOOM SHALL BE PAINTED ALTERNATELY WITH REDDISH BROWN & BLACK
 - STOP BOARD SHALL BE PAINTED FRONT SIDE RED & BACK SIDE BLACK
 - LETTER 'STOP' SHALL BE PAINTED WHITE METAL REFLECTIVE SHEET.
 - ALL OTHER PARTS PAINTED BLACK.
 - LIMITS OF DIMENSION SHALL BE AS PER IRS 3: 10-78 (LATEST).
 - ALL DIMENSIONS ARE IN MILLIMETRES.

ITEM NO.	DESCRIPTION	QTY	UNIT
01	SWELDING	1	DAY
02	SWELDING	1	DAY
03	SWELDING	1	DAY
04	SWELDING	1	DAY
05	SWELDING	1	DAY
06	SWELDING	1	DAY
07	SWELDING	1	DAY
08	SWELDING	1	DAY
09	SWELDING	1	DAY
10	SWELDING	1	DAY
11	SWELDING	1	DAY
12	SWELDING	1	DAY
13	SWELDING	1	DAY
14	SWELDING	1	DAY
15	SWELDING	1	DAY
16	SWELDING	1	DAY
17	SWELDING	1	DAY
18	SWELDING	1	DAY
19	SWELDING	1	DAY
20	SWELDING	1	DAY
21	SWELDING	1	DAY
22	SWELDING	1	DAY
23	SWELDING	1	DAY
24	SWELDING	1	DAY
25	SWELDING	1	DAY
26	SWELDING	1	DAY
27	SWELDING	1	DAY
28	SWELDING	1	DAY
29	SWELDING	1	DAY
30	SWELDING	1	DAY
31	SWELDING	1	DAY
32	SWELDING	1	DAY
33	SWELDING	1	DAY
34	SWELDING	1	DAY
35	SWELDING	1	DAY
36	SWELDING	1	DAY
37	SWELDING	1	DAY
38	SWELDING	1	DAY
39	SWELDING	1	DAY
40	SWELDING	1	DAY
41	SWELDING	1	DAY
42	SWELDING	1	DAY
43	SWELDING	1	DAY
44	SWELDING	1	DAY
45	SWELDING	1	DAY
46	SWELDING	1	DAY
47	SWELDING	1	DAY
48	SWELDING	1	DAY
49	SWELDING	1	DAY
50	SWELDING	1	DAY
51	SWELDING	1	DAY
52	SWELDING	1	DAY
53	SWELDING	1	DAY
54	SWELDING	1	DAY
55	SWELDING	1	DAY
56	SWELDING	1	DAY
57	SWELDING	1	DAY
58	SWELDING	1	DAY
59	SWELDING	1	DAY
60	SWELDING	1	DAY
61	SWELDING	1	DAY
62	SWELDING	1	DAY
63	SWELDING	1	DAY
64	SWELDING	1	DAY
65	SWELDING	1	DAY
66	SWELDING	1	DAY
67	SWELDING	1	DAY
68	SWELDING	1	DAY
69	SWELDING	1	DAY
70	SWELDING	1	DAY
71	SWELDING	1	DAY
72	SWELDING	1	DAY
73	SWELDING	1	DAY
74	SWELDING	1	DAY
75	SWELDING	1	DAY
76	SWELDING	1	DAY
77	SWELDING	1	DAY
78	SWELDING	1	DAY
79	SWELDING	1	DAY
80	SWELDING	1	DAY
81	SWELDING	1	DAY
82	SWELDING	1	DAY
83	SWELDING	1	DAY
84	SWELDING	1	DAY
85	SWELDING	1	DAY
86	SWELDING	1	DAY
87	SWELDING	1	DAY
88	SWELDING	1	DAY
89	SWELDING	1	DAY
90	SWELDING	1	DAY
91	SWELDING	1	DAY
92	SWELDING	1	DAY
93	SWELDING	1	DAY
94	SWELDING	1	DAY
95	SWELDING	1	DAY
96	SWELDING	1	DAY
97	SWELDING	1	DAY
98	SWELDING	1	DAY
99	SWELDING	1	DAY
100	SWELDING	1	DAY

	FILE OR ROUGH GROUND R.A. > 80
	MACHINE FINISH (ROUGH) R.A. 40 TO 80
	MACHINE FINISH (MEDIUM) R.A. 16 TO 40
	MACHINE FINISH (FINE) R.A. UP TO 16
	GROUND
	HARDENED GROUND

ROUGHNESS NUMBER IN MICRONS



FRONT VIEW

SIDE VIEW

08 BOOM HANDLE

NOTE:
4. HOT DIP ZINC COATING ON M.S. PIPE AS PER IS: 4736-1985.
3. BOOM HANDLE SHALL BE WELDED AROUND TO FIX ON RECTANGULAR BOOM.
2. LIMITS OF DIMENSION SHALL BE AS PER IRS S : 10 - 78 (LATEST).
1. ALL DIMENSIONS ARE IN MILLIMETRES.

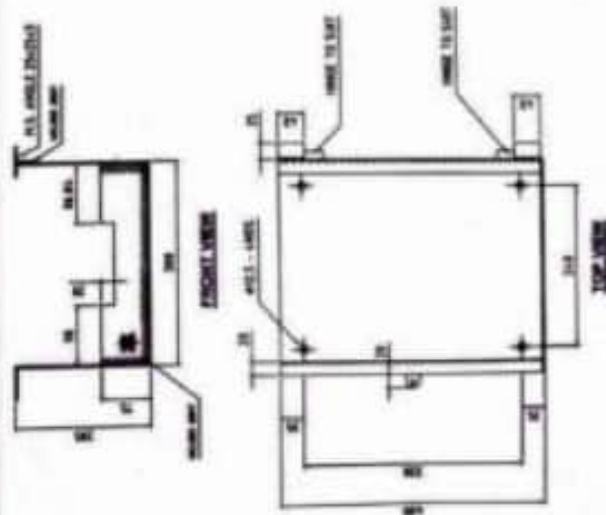
01	SLIDING BOOM (RECTANGULAR SECTION) - LC GATE	SW/SA/29/768
	DESCRIPTION	NO
FOR ASSEMBLY		
NO.OFF		
SIGNAL WORKSHOP / ER / HOWRAH.		
SLIDING BOOM (RECTANGULAR SECTION) - LC GATE - BOOM HANDLE		
DRG. NO. SW / S / 29 / 776		
SIGNAL WORKSHOP / ER / HOWRAH.		
SLIDING BOOM (RECTANGULAR SECTION) - LC GATE		
DRG. NO. SW / SA / 29 / 768		
SHEET: 9 OF 21		

MATL & SPEC.	M.S. LIGHT TUBE IS : 1328 RIS : S 10
MILLIMETRES 10 0 10 20	DO NOT SCALE

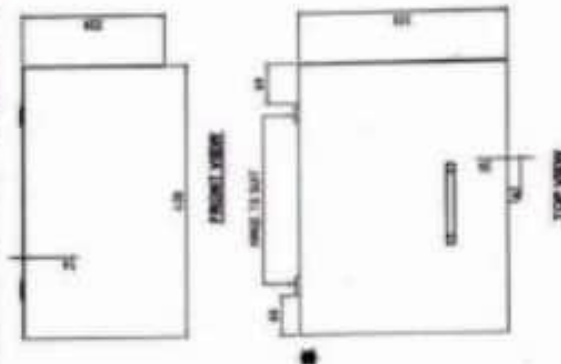
IRS : S10	SPEC :	DRAWN	CHECKED	VERIFIED	APPROVED
MILLIMETRES 10 0 10 20	SCALE :	1/100	1/100	1/100	1/100
DO NOT SCALE	DO NOT SCALE	DO NOT SCALE	DO NOT SCALE	DO NOT SCALE	DO NOT SCALE



NOTE:
1. LISTS OF CHAIRPERSONS SHALL BE AS PER §§ 8, 10, 16 & 18(B)
2. ALL CHAIRPERSONS ARE IN MEETINGS.



NOTE:
1. LETTERS OF CANCELLATION SHOULD BE AD. FOR WHO IS IN 70 (AUGUST).
2. ALL INFORMATION ALSO IN THE LETTERS.



NOTE:
1. LETTERS OF CANCELLATION SHALL BE ALIQUOTED 10 - 10 - 10 (10% OF THE VALUE OF THE TRUCK) TO THE CANCELLING PARTY.
2. CANCELLATION FEE SHALL BE \$100.00 PER TRUCK.

		MAKE & SPEC. _____ DATE _____	
APPROVED _____ (Signature)		VERIFIED _____ (Signature)	
PROTECTION BOX SERIAL NO. _____		PROTECTION BOX - CASE SERIAL NO. _____	
FOR ASSEMBLY SERIAL WORKSHOP / ER / HOURS _____		_____	
IN PROTECTION BOX SERIAL NO. _____		_____	

Q	PROTECTIONS	SW / SA / TS / TT
Q	PROTECTION	NO
FOR ASSEMBLY		
BOM, WORKSHOP / ER / HOFMAN		
PROTECTION BOX-COVER		
DRG. NO. SW / SA / TS / TT / B		
BOM, WORKSHOP / ER / HOFMAN		
ING BOOM		
CTANGULAR SECTION)) - LC GATE		
NO. SW / SA / TS / TT / B		

[illegible]

10	0
----	---

SPEC :	SCALE
--------	-------

DRAWN	<i>[Signature]</i> 18.8.2009
-------	---------------------------------



CHNEC

ED	6/1/19	U.S. DEPARTMENT OF JUSTICE
----	--------	----------------------------

VERIFIED	10/10/2020
----------	------------

ED		
----	--	--

APPROVED

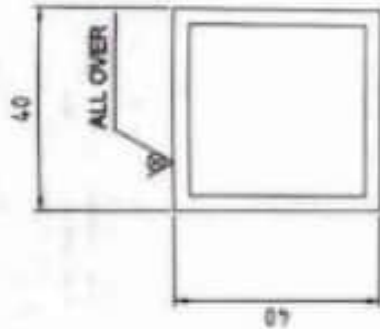
--	--	--

document.

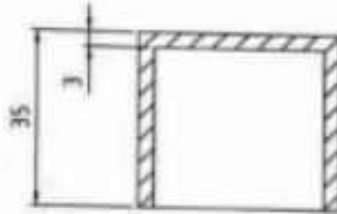
1. *Prunella vulgaris* L. (Blackberry)

© 2000 Blackwell Science Ltd

NOTE:
LAWYERS OF SEVERAL
ALL JURISDICTIONS



FRONT VIEW



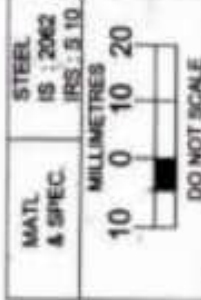
SIDE VIEW



TOP VIEW

10 BOOM LOCK PIECE

NOTE:
3. BOOM LOCK PIECE SHALL BE WELDED AROUND TO FIX ON RECTANGULAR BOOM.
2. LIMITS OF DIMENSION SHALL BE AS PER IRS S:10 - 78 (LATEST).
1. ALL DIMENSIONS ARE IN MILLIMETRES.

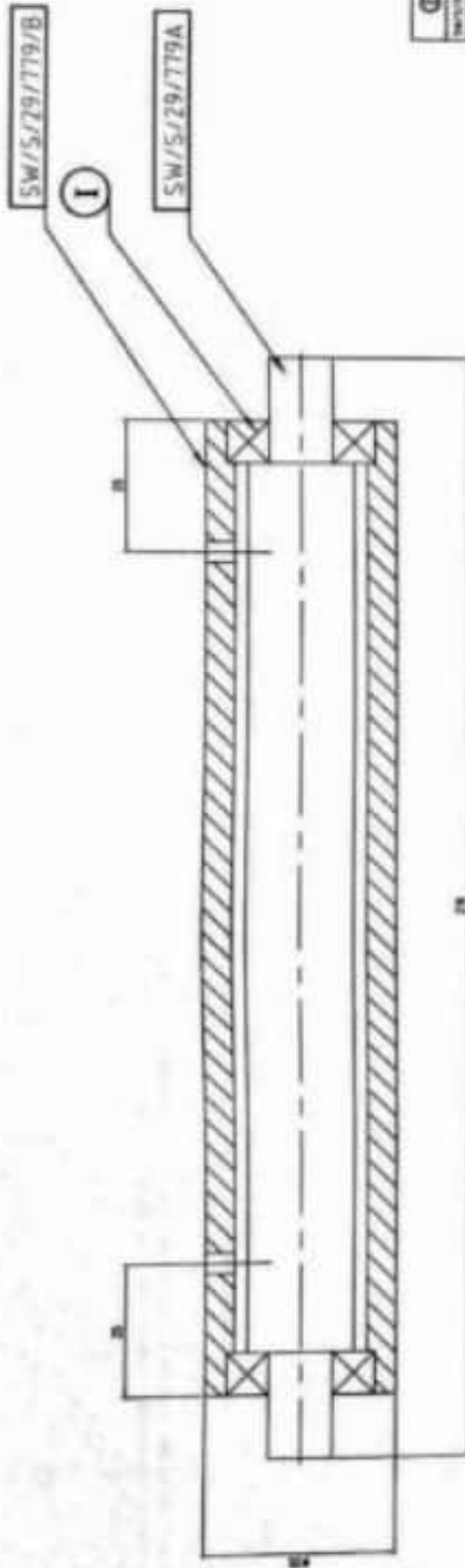


SLIDING BOOM (RECTANGULAR SECTION) - LC GATE	SW/SA/29/768
DESCRIPTION	NO
FOR ASSEMBLY	
SIGNAL WORKSHOP / ER / HOWRAH.	
SLIDING BOOM (RECTANGULAR SECTION) - LC GATE - BOOM LOCK PIECE.	
DRG. NO. SW / S / 29 / 778	

APPROVED	VERIFIED	CHECKED	DRAWN	SPEC :	IRS : S10	SIGNAL WORKSHOP / ER / HOWRAH.
				SCALE :	MILLIMETRES 10 0 10 20 DO NOT SCALE	SLIDING BOOM (RECTANGULAR SECTION) - LC GATE
DATE / P.L.S. / FOR	CHKD / DT / HRS	ADDN / DT / HRS	DES / PLO	DES / MDP	DES / DMS	DRG. NO. SW / SA / 29 / 768
						SHEET: 11 OF 21

ROUGHNESS NUMBER IN MICRONS

--	--	--	--	--	--



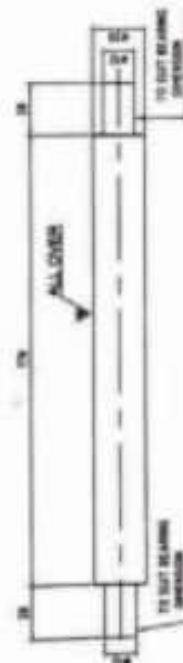
NOTE:
 1. FRONT ROLLER SHALL BE WELDED AROUND TO FIX ON GUIDE TRAY.
 2. SINCE SHIP BALL BEARINGS NO. 801 Z (1 NOS) ARE BEING USED FOR MANUFACTURING PROTOTYPE SLIDING BOOM (RECTANGULAR SECTION) - LC GATE.
 3. LIMITS OF DIMENSIONS SHALL BE AS PER IS 15-79 (LATEST).
 4. ALL DIMENSIONS ARE IN MILLIMETRES.

SECTIONAL FRONT VIEW

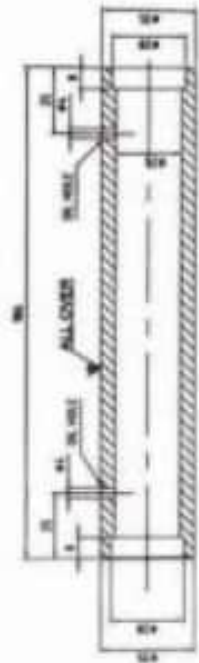
⊙ FRONT ROLLER

REV	DESCRIPTION	DATE	BY	CHKD
1	ISSUED FOR MANUFACTURE	15/01/2019
2
3
4
5
6
7
8
9
10
11
12
13
14
15
16
17
18
19
20
21
22
23
24
25
26
27
28
29
30
31
32
33
34
35
36
37
38
39
40
41
42
43
44
45
46
47
48
49
50
51
52
53
54
55
56
57
58
59
60
61
62
63
64
65
66
67
68
69
70
71
72
73
74
75
76
77
78
79
80
81
82
83
84
85
86
87
88
89
90
91
92
93
94
95
96
97
98
99
100

DRG. NO. SW/S/29/779



FRONT VIEW



SECTIONAL FRONT VIEW



TOP VIEW



BOTTOM VIEW

NOTE:
 1. LIMITS OF DIMENSIONS SHALL BE AS PER IS 15-79 (LATEST).
 2. ALL DIMENSIONS ARE IN MILLIMETRES.

REV	DESCRIPTION	DATE	BY	CHKD
1	ISSUED FOR MANUFACTURE	15/01/2019
2
3
4
5
6
7
8
9
10
11
12
13
14
15
16
17
18
19
20
21
22
23
24
25
26
27
28
29
30
31
32
33
34
35
36
37
38
39
40
41
42
43
44
45
46
47
48
49
50
51
52
53
54
55
56
57
58
59
60
61
62
63
64
65
66
67
68
69
70
71
72
73
74
75
76
77
78
79
80
81
82
83
84
85
86
87
88
89
90
91
92
93
94
95
96
97
98
99
100

DRG. NO. SW/S/29/779 / A

NOTE:
 1. LIMITS OF DIMENSIONS SHALL BE AS PER IS 15-79 (LATEST).
 2. ALL DIMENSIONS ARE IN MILLIMETRES.

REV	DESCRIPTION	DATE	BY	CHKD
1	ISSUED FOR MANUFACTURE	15/01/2019
2
3
4
5
6
7
8
9
10
11
12
13
14
15
16
17
18
19
20
21
22
23
24
25
26
27
28
29
30
31
32
33
34
35
36
37
38
39
40
41
42
43
44
45
46
47
48
49
50
51
52
53
54
55
56
57
58
59
60
61
62
63
64
65
66
67
68
69
70
71
72
73
74
75
76
77
78
79
80
81
82
83
84
85
86
87
88
89
90
91
92
93
94
95
96
97
98
99
100

DRG. NO. SW/S/29/779 / B

CHECKED		DRAWN	SPEC :	IRS : S10

1



NOTE:

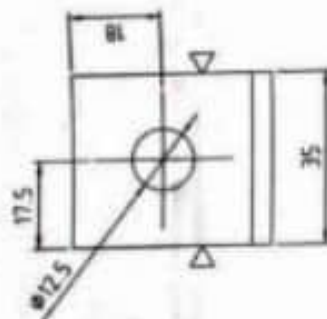
3. JOINING PLATE - 'A' SHALL BE WELDED AROUND TO FIX ON GUIDE TRAY.
2. LIMITS OF DIMENSION SHALL BE AS PER IRS S : 10 - 78 (LATEST).
1. ALL DIMENSIONS ARE IN MILLIMETRES.

[illegible]

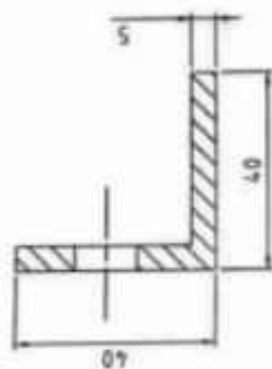
					
FILE OR ROUGH GROUND Rz > 80	MACHINE FINISH (ROUGH) Rz 40 TO 80	MACHINE FINISH (MEDIUM) Rz 16 TO 40	MACHINE FINISH (FINE) Rz UP TO 16	GROUND	HARDENED GROUND

ROUGHNESS NUMBER IN MICRONS

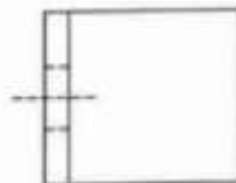
ROUGHNESS NUMBER IN MICRONS



FRONT VIEW



SIDE VIEW



TOP VIEW

16 JOINING BRACKET SMALL

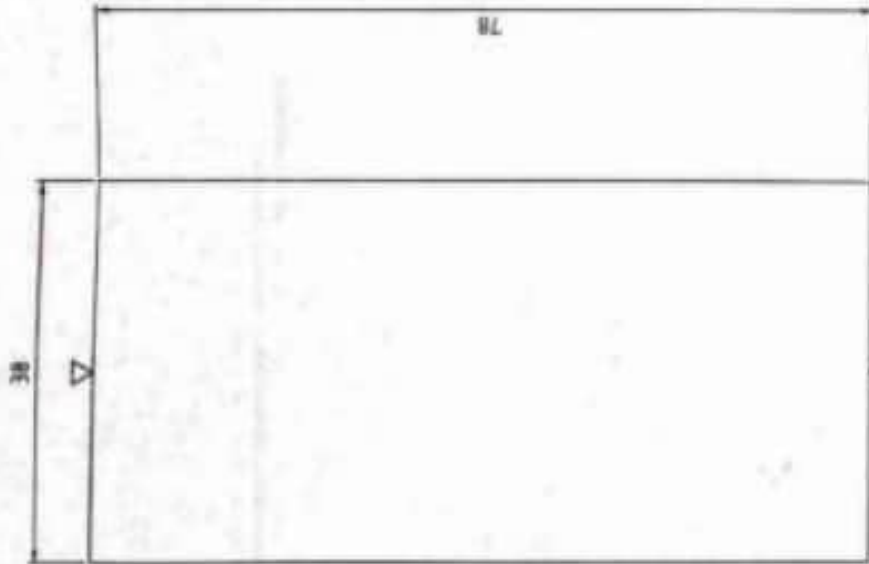
NOTE:

- JOINING BRACKET SHALL BE WELDED AROUND TO FIX ON GUIDE TRAY.
- LIMITS OF DIMENSION SHALL BE AS PER IRS S:10 - 78 (LATEST).
- ALL DIMENSIONS ARE IN MILLIMETRES.

06	SLIDING BOOM (RECTANGULAR SECTION) - LC GATE	SW/SA/29/768
NO OFF	DESCRIPTION	NO
FOR ASSEMBLY		
SIGNAL WORKSHOP / ER / HOWRAH.		

NOTE:										
3. JOINING BRACKET SHALL BE WELDED AROUND TO FIX ON GUIDE TRAY.										
2. LIMITS OF DIMENSION SHALL BE AS PER IRS S : 10 - 78 (LATEST).										
1. ALL DIMENSIONS ARE IN MILLIMETRES.										
APPROVED		VERIFIED		CHECKED		DRAWN	SPEC :	MATERIAL & SPEC.		
		 P. S. K. DEY (S.S. / KDS)		 P. S. K. DEY (S.S. / KDS)		 P. S. K. DEY (S.S. / KDS)	IRS : S 10	STEEL IS : 2002 IRS : S 10		
CETE / P.L.S. / KDS		CDE / S.S. / KDS		CDE / S.S. / KDS		SCALE : 1 : 1	SCALE :		DO NOT SCALE	
CETE / P.L.S. / KDS		CDE / S.S. / KDS		CDE / S.S. / KDS		SCALE : 1 : 1	SCALE :		DO NOT SCALE	

FILE OR ROUGH GROUND # > 80	MACHINE FINISH (ROUGH) UP TO 40 TO 80	MACHINE FINISH (MEDIUM) UP TO 16 TO 40	MACHINE FINISH (FINE) UP TO 16	GROUND	HARDEND GROUND
--------------------------------------	--	---	---	--------	-------------------



FRONT VIEW



TOP VIEW

(17) BOOM END PLATE

NOTE:

3. BOM END PLATE SHALL BE WELDED AROUND TO FIX ON RECTANGULAR BOOM.
2. LIMITS OF DIMENSION SHALL BE AS PER IRS S : 10 - 78 (LATEST).
1. ALL DIMENSIONS ARE IN MILLIMETRES.

02	SLIDING BOOM (RECTANGULAR SECTION) - LC GATE	SW/SA/29/768
NO. OFF	DESCRIPTION	NO
	FOR ASSEMBLY	
	SIGNAL WORKSHOP / ER / HOWRAH.	
	SLIDING BOOM (RECTANGULAR SECTION) - LC GATE - BOOM END PLATE	
	DRG. NO. SW / S / 29 / 785	
	SIGNAL WORKSHOP / ER / HOWRAH.	
	SLIDING BOOM (RECTANGULAR SECTION) - LC GATE	
	DRG. NO. SW / SA / 29 / 768	SHEET: 18 OF 21

MATERIAL & SPEC.	STEEL IS : 2062 IRS : S 10
MILLIMETRES 10 0 10 20	DO NOT SCALE

IRS : S 10	MILLIMETRES 10 0 10 20
DO NOT SCALE	

SPEC :	SCALE :
--------	---------

DRAWN	DO NOT SCALE
-------	--------------

CHECKED	DO NOT SCALE
---------	--------------

VERIFIED	DO NOT SCALE
----------	--------------

APPROVED	DO NOT SCALE
----------	--------------

ROUGHNESS NUMBER IN MICRONS

FILE OR
ROUGH
GROUND
Ra > 80

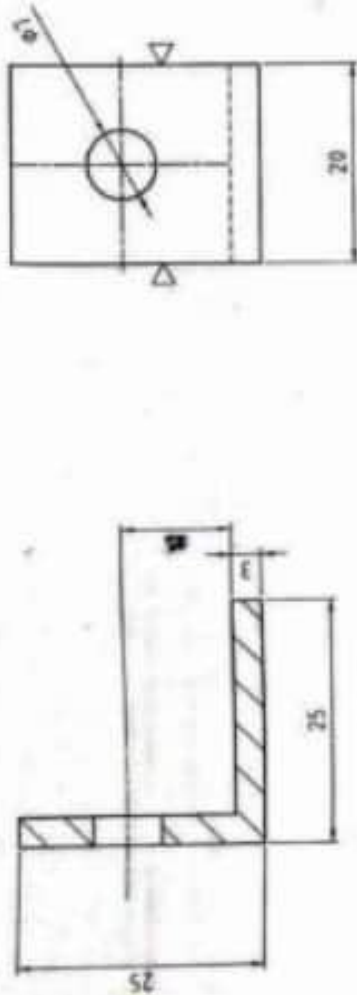
MACHINE
FINISH
(ROUGH)
Ra 40 TO 80

MACHINE
FINISH
(MEDIUM)
Ra 16 TO 40

MACHINE
FINISH
(FINE)
Ra 8 TO 16

GROUND

HARDEND
GROUND



FRONT VIEW

SIDE VIEW



TOP VIEW

19 BRACKET FOR CHAIN

NOTE:

3. BRACKET FOR CHAIN SHALL BE WELDED AROUND TO FIX ON RECTANGULAR BOOM.

2. LIMITS OF DIMENSION SHALL BE AS PER IRS S:10 - 78 (LATEST).

1. ALL DIMENSIONS ARE IN MILLIMETRES.

B1	SLIDING BOOM (RECTANGULAR SECTION) - LC GATE	SWISA/29/768
NO. OFF	DESCRIPTION	NO
FOR ASSEMBLY		

MATL & SPEC.	STEEL IS : 2062 IRS : S 10	SIGNAL WORKSHOP / ER / HOWRAH.
MILLIMETRES 10 0 10 20	MILLIMETRES 10 0 10 20	SLIDING BOOM (RECTANGULAR SECTION) - LC GATE - BRACKET FOR CHAIN
DO NOT SCALE		DRG. NO. SW / S / 29 / 767

APPROVED	VERIFIED	CHECKED	DRAWN	SPEC :	SCALE :	DO NOT SCALE	DRG. NO. SW/SA/29/768	SHEET 20 OF 21
				IRS : S10	10 0 10 20	DO NOT SCALE	SLIDING BOOM (RECTANGULAR SECTION) - LC GATE	
DATE / P.L.S. / NAME	CHKD / REV / NAME	APPD / PCD / NAME	DES / DES / NAME				SIGNAL WORKSHOP / ER / HOWRAH.	

--	--	--	--	--	--

ROUGHNESS NUMBER IN MICRONS

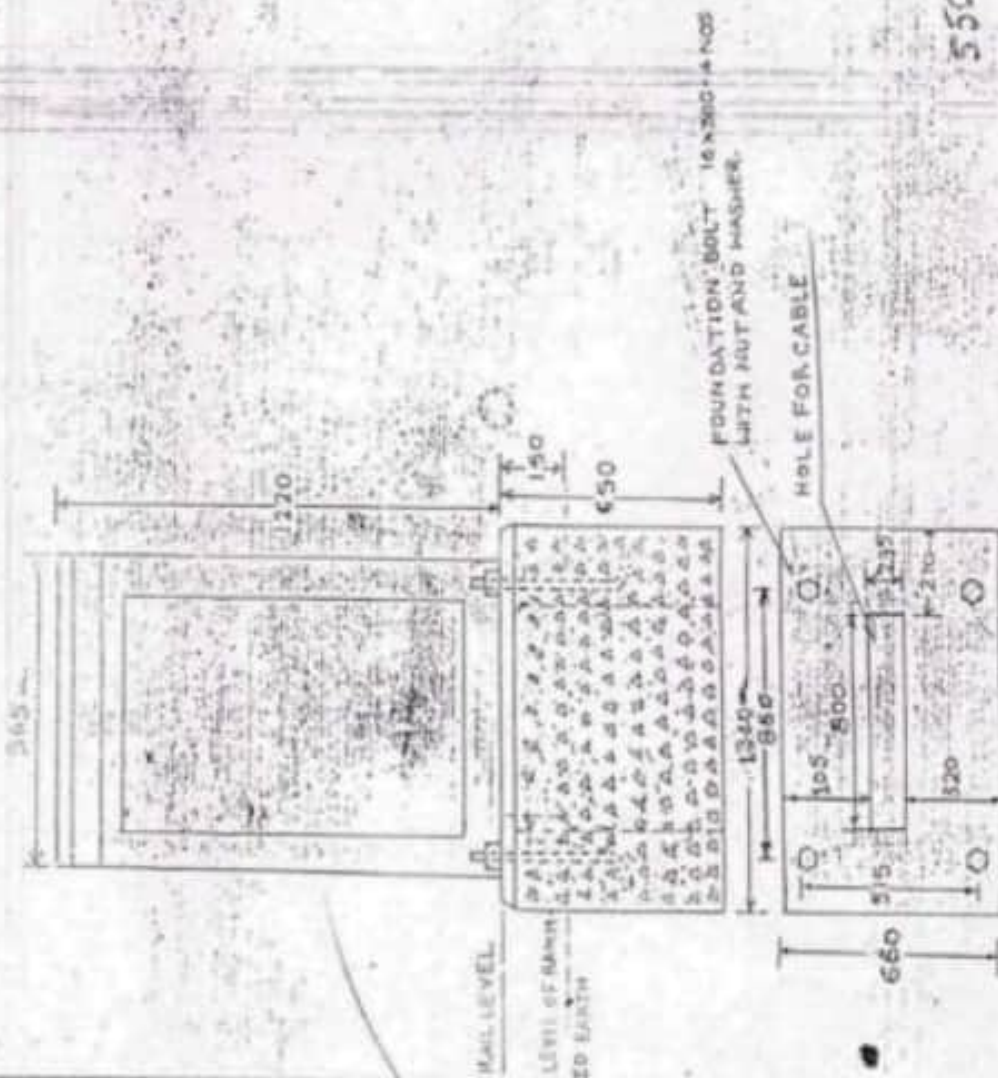
S&T Drawing

Chapter - 11

**Apparatus case, Outdoor
installation, Fuses, ARA
Terminal, Hylam Sheet,
Phenolic Laminated sheets
etc.**

NOTE-

1. ALL DIMENSIONS IN MM.
2. FOUNDATION SHOULD BE CAST, PREPARING TEMPLATE FOR THE FOUNDATION BOLTS.
3. OUTER SURFACE SHOULD BE PLASTERED WITH 1:4 CEMENT SAND UP TO 300 FROM THE TOP OF THE SURFACE.
4. ON ALL SIDES EARTH SHOULD BE RAMMED UP TO THE LEVEL SHOWN IN THE SKETCH.
5. FOUNDATION WITH MIXTURE OF CEMENT, SAND AND STONE CHIPS. SIZE 200(1:3:6)



SUPERSEDES DRG No. S & T C-33 (HXG)

550-60

APPROVED	CHECKED	DRAWN	FOUNDATION FOR APPARATUS CASE (SINGLE)	S.K. NO.
<i>[Signature]</i>	<i>[Signature]</i>	<i>[Signature]</i>		S & T
				6-4/98
				(NKG)

THIS DRG. SHOULD BE USED ONLY IN TENDER

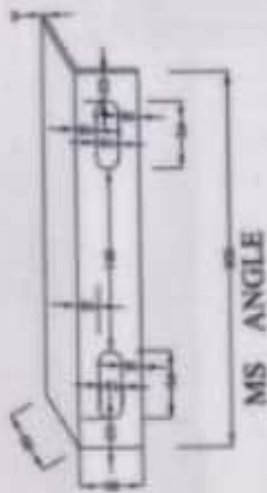
CASE NO. CSTE/CON/347 CSTE/CON/101

CSTE/CON/103 & CSTE/CON/28

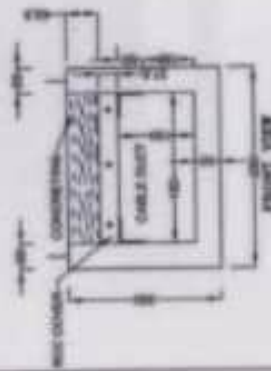
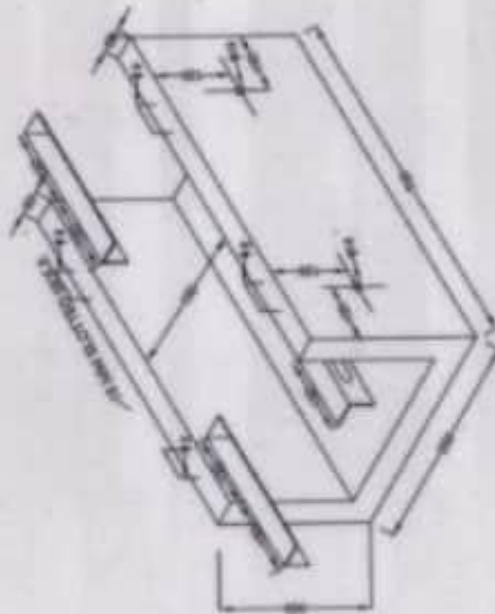
S&T Drawing

Chapter - 12

**Cable laying material,
cable protection, cable
execution, Jointing Kits
items etc.**



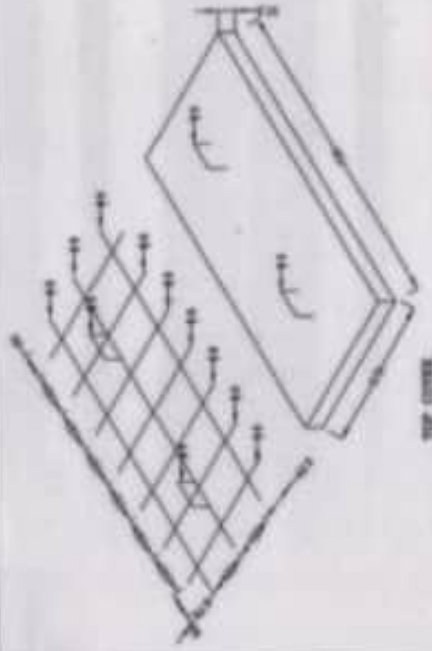
© 2001 Blackwell Science Ltd



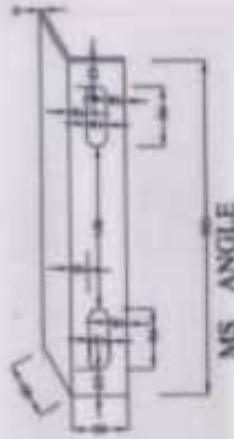
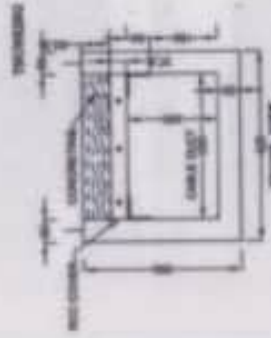
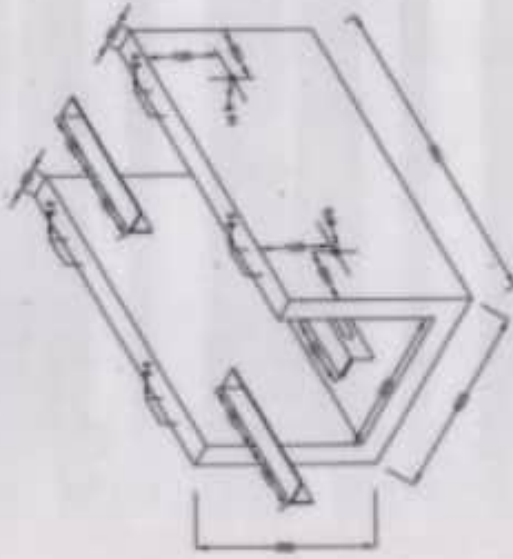
1. THRESHING AND CAPPING ARE SUITABLE FOR BORING ADJACENT TO THE TRACK TRENCH.
2. THE THRESHING TO BE ALIGNED BY PUTTING M.S. ANGLE SIZE 50 X 50 X 3 MM. LENGTH 300MM
3. 6.0/8.0 MM. DIAMETER HIGH STRENGTH DEFORMED STEEL BARS CONFORMING TO IS : 11790 TO BE USED FOR REINFORCEMENT.
4. OR AS AN ALTERNATIVE REINFORCEMENT TO 51.1009 1962 MADE WITH 10MM, 6MM DIAMETER AS PER DRAWINGS (NOT TMT) IN REQUIRED SPACING WITH MINIMUM YIELD STRENGTH OF 550Mpa AND MINIMUM PERCENTAGE ELONGATION OF 16% AS PER MTC WEIGHT TOLERANCE IN 80/SQUARE METER SHOULD BEAR PER IS 1798 2008. LAPPING IF REQUIRED TO BE PROVIDED AS PER IS 456-2000 USING BENDING WHEEL(MTC FROM NAH) LAB IS MUST. (LAB IS MCTM 500)
5. M-25 GRADE OF CONCRETE TO BE USED CONFORMING TO IS : 10262-1982 AND IS : 456-2000-10mm SIZE COARSE AGGREGATE TO BE USED
6. OPC OF 43 GRADE TO BE USED CONFORMING TO IS : 8112-1989.
7. THE ACCEPTANCE TEST SHALL BE CONDUCTED IN A RECOGNIZED LABORATORY AND THE COST OF THE TEST AS CHARGED BY THE LABORATORY SHALL BE BORNE BY THE CONTRACTOR.
8. CURING SHALL BE DONE AS PER THE IS 456-2000.
9. CURED SHOULD BE FACTORY MADE.
10. ALL DIMENSIONS ARE IN MILLIMETER.
11. 10. 16 MM DIAMETER SLOTTED HOLE SHALL BE PROVIDED IN M.S. ANGLE
12. TWO SETS OF SUT/BOLT TWO WASHERS SHALL BE SUPPLIED WITH EACH DUCT M 16 X 60 MM HALF THREADED CONFORMING TO SPECIFICATION IS : 1364(PART-1:2003).
13. SPECIFICATION TO BE DONE ABOVE THE COVER FOR WHICH SEPARATE ITEM SHOULD BE PROVIDED IN TENDER SCHEDULE.

TYPE V - FOR CABLES UPTO 8.

DATE OF REVISION BY	APPROVED	CHECKED	DRAWN	SCALE	TYPICAL BRACKET FOR RCC BAL. CABLE DUCT TYPE 'V'	HEET NO. 1/7
ER	DATE 27/05/2019 BY [Signature]	DATE 27/05/2019 BY [Signature]	DATE 27/05/2019 BY [Signature]	1:10		



TOP COVER



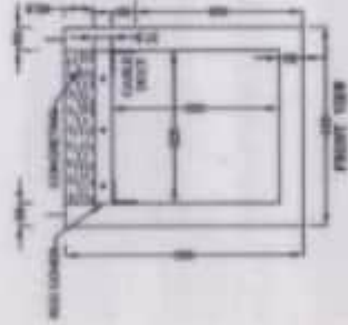
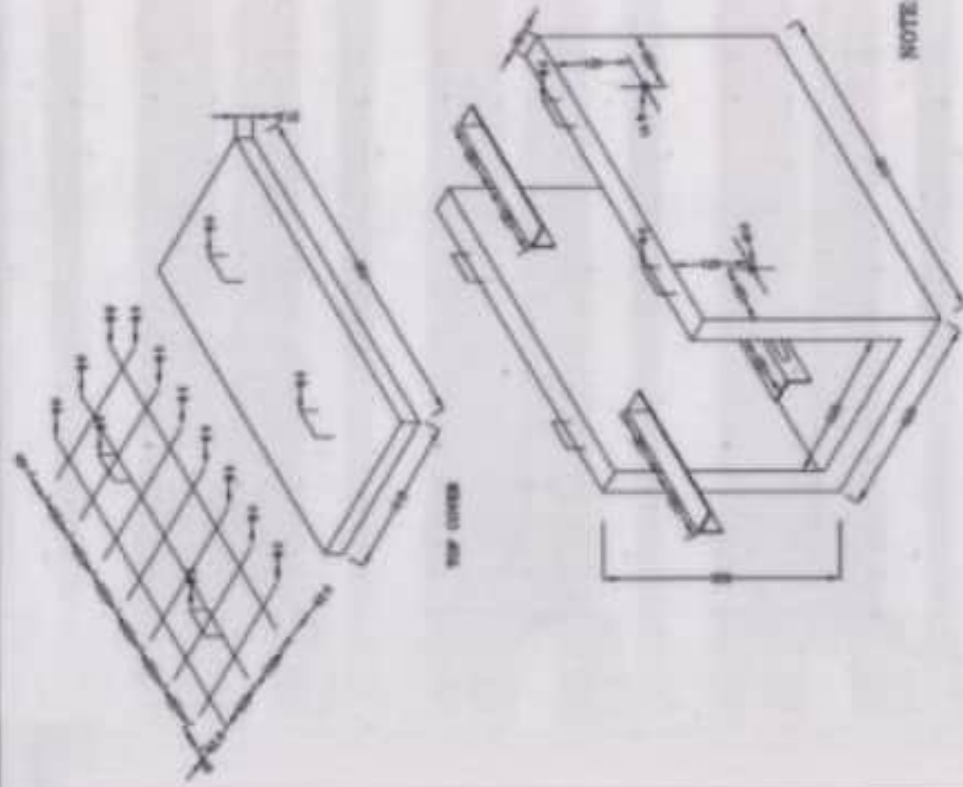
END COVER

NOTE:-

1. THICKNESS AND CAPPING ARE SUITABLE FOR BENDING ADJACENT TO THE TRACK THICKNESS.
2. THE THICKNESS TO BE ALLOWED BY PUTTING M.S. ANGLE SIZE 50 X 50 X 3 MM LENGTH 100MM.
3. 6.3/6.0 MM DIAMETER HIGH STRENGTH DEFORMED STEEL BARS CONFORMING TO IS : 11798 TO BE USED FOR REINFORCEMENT OR AS AN ALTERNATIVE. REINFORCEMENT CAN ALSO BE PROVIDED AS WELDED MESH OF APPROVED MAKE (DATA STEEL, SAIL, JSC, etc.) CONFORMING TO IS: 1590-1962 MADE WITH 10MM, 12MM DIAMETER AS PER DRAWINGS (NOT TMT) IN REQUIRED SPACING WITH MINIMUM YIELD STRENGTH OF 500MPa AND MINIMUM PERCENTAGE ELONGATION OF 16% AS PER MTC WEIGHT TOLERANCE IN KG/SQUARE METER SHOULD BEAS PER IS: 11798-2008. LAPPING IF REQUIRED TO BE PROVIDED AS PER IS: 456-2000 USING BENDING WIRE (MTC FROM NAME, LAB IN MOUNT) LAD 1.5% (YH 500)
4. M-25 GRADE OF CONCRETE TO BE USED CONFORMING TO IS : 10262-1982 AND IS : 456-2000-15mm SIZE COARSE AGGREGATE TO BE USED.
5. OPC OF 43 GRADE TO BE USED CONFORMING TO IS : 8112-1969.
6. THE ACCEPTANCE TEST SHALL BE CONDUCTED IN A RECOGNIZED LABORATORY AND THE COST OF THE TEST AS CHARGED BY THE LABORATORY SHALL BE BORNE BY THE CONTRACTOR.
7. CURING SHALL BE DONE AS PER THE IS : 456-2000.
8. JOINT SHOULD BE FACTORY MADE.
9. ALL DIMENSIONS ARE IN MILLIMETER.
10. 18 MM DIAMETER SLOTTED HOLE SHALL BE PROVIDED IN M.S. ANGLE.
11. TWO SETS OF NOT BOLT TWO WASHERS SHALL BE SUPPLIED WITH EACH JOINT M 18 X 80 MM HALF THREADED CONFORMING TO SPECIFICATION IS: 1384(PART-1, 2022).
12. CONCRETING TO BE DONE ABOVE THE COVER FOR WHICH SEPARATE ITEM SHOULD BE PROVIDED IN TENDER SCHEDULE.

SUPERSEDES TYPICAL DRAWING No. S.I./SMT/1/24 UP TO ALTL

DESIGN NO.	ER	APPROVED	CHECKED	SCALE	DATE	TYPICAL DRAWING FOR NOT CABLE DUCT TYPE IV	REVISION
100/200							



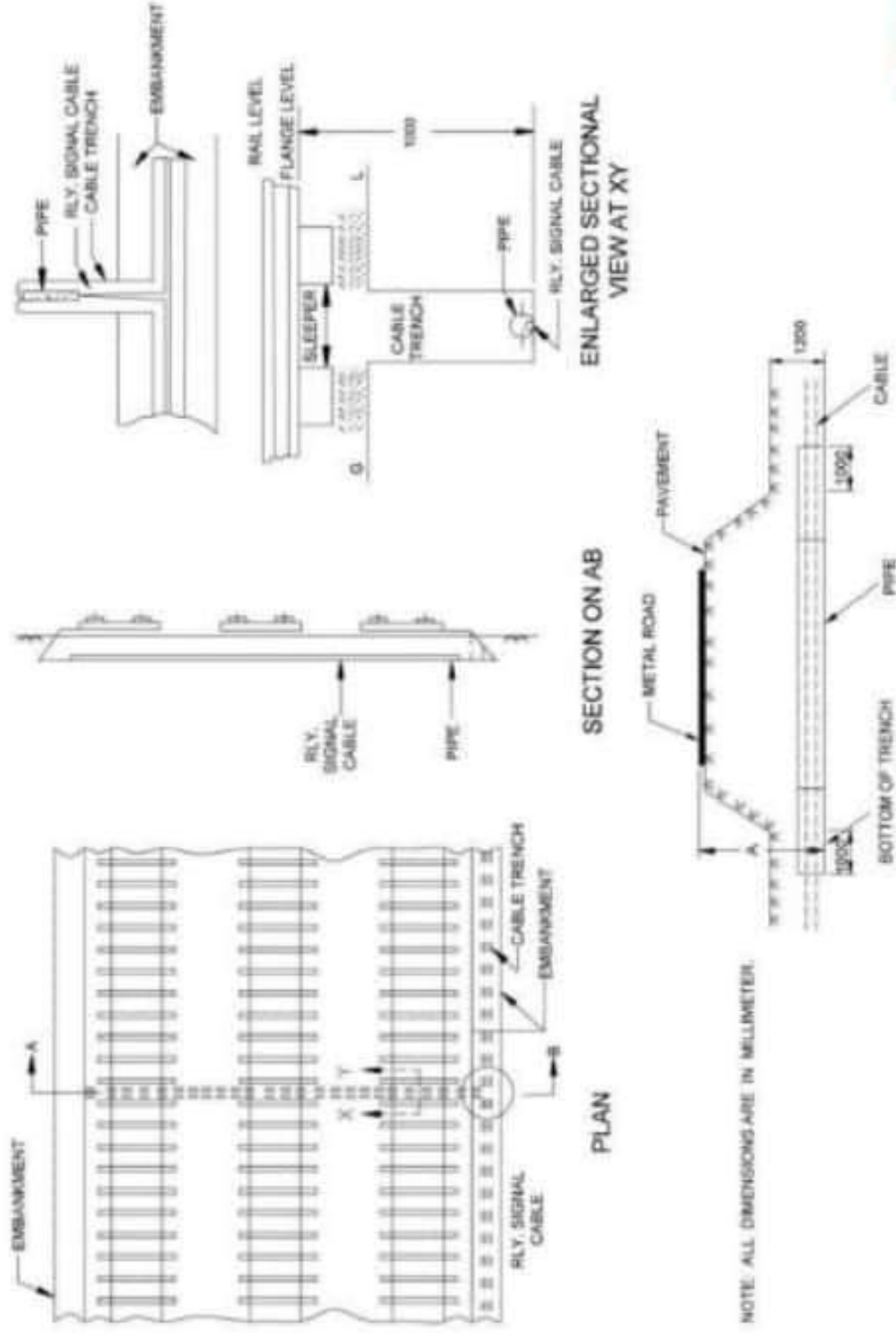
NOTE:-

1. TRENCHING AND CAPPING ARE SUITABLE FOR BURYING ADJACENT TO THE TRACHE TRENCHES.
2. THE TRENCHING TO BE ALIGNED BY PUTTING M.S. ANGLE SIZE 40 X 40 X 3 MM LENGTH 300MM.
3. 6.0/8.0 MM DIAMETER HIGH STRENGTH REINFORCED STEEL BARS CONFORMING TO IS : 1176 TO BE USED FOR REINFORCEMENT. OR AS AN ALTERNATIVE, REINFORCEMENT CAN ALSO BE PROVIDED AS WELDED MESH OF APPROVED MAKE (DATA STEEL, SAIL, JSP, JIW, BHEL) CONFORMING TO IS 1566-1962 MADE WITH 8MM, 6MM DIAMETER AS PER DRAWINGS (NOT TWT) IN REQUIRED SPACING WITH MINIMUM YIELD STRENGTH OF 550MPA AND MINIMUM PERCENTAGE ELONGATION OF 10% AS PER MTC WEIGHT TOLERANCE IN 10/100MM NETTER SHOULD BEAS PER IS 1786-2008. LAPPING IF REQUIRED TO BE PROVIDED AS PER IS 456-2000 USING BENDING WIRE (MTC FROM MAKE, LAB IS MUST). LAP LENGTH 500D.
4. M-25 GRADE OF CONCRETE TO BE USED CONFORMING TO IS : 10262-1982 AND IS : 456-2000-10mm SIZE COARSE AGGREGATE TO BE USED.
5. OPC OF 43 GRADE TO BE USED CONFORMING TO IS : 8112-1988.
6. THE ACCEPTANCE TEST SHALL BE CONDUCTED IN A RECOGNIZED LABORATORY AND THE COST OF THE TEST AS CHARGED BY THE LABORATORY SHALL BE BORNE BY THE CONTRACTOR.
7. CURING SHALL BE DONE AS PER THE IS 456-2000.
8. JOINT SHOULD BE FACTORY MADE.
9. ALL DIMENSIONS ARE IN MILLIMETER.
10. 16 MM DIAMETER SLOTTED HOLE SHALL BE PROVIDED IN M.S. ANGLE.
11. TWO SETS OF NOT-BOLT TWO WASHERS SHALL BE SUPPLIED WITH EACH JOINT M 16 X 40 MM HALF THREADED CONFORMING TO SPECIFICATION IS 1564(PART-1,2002).
12. CONCRETING TO BE DONE ABOVE THE COVER FOR WHICH SEPARATE ITEM SHOULD BE PROVIDED IN TENDER SCHEDULE.

SUPPLIES TYPICAL DRAWING No.51/2AT/1/24 UPTO ALT.1.

NO. OF SHEET	E.R	APPROVED	CHECKED	DRAWN	SCALE	TYPICAL DRAWING FOR BCC CABLE DUCT	DATE	SHEET NO. 1/7

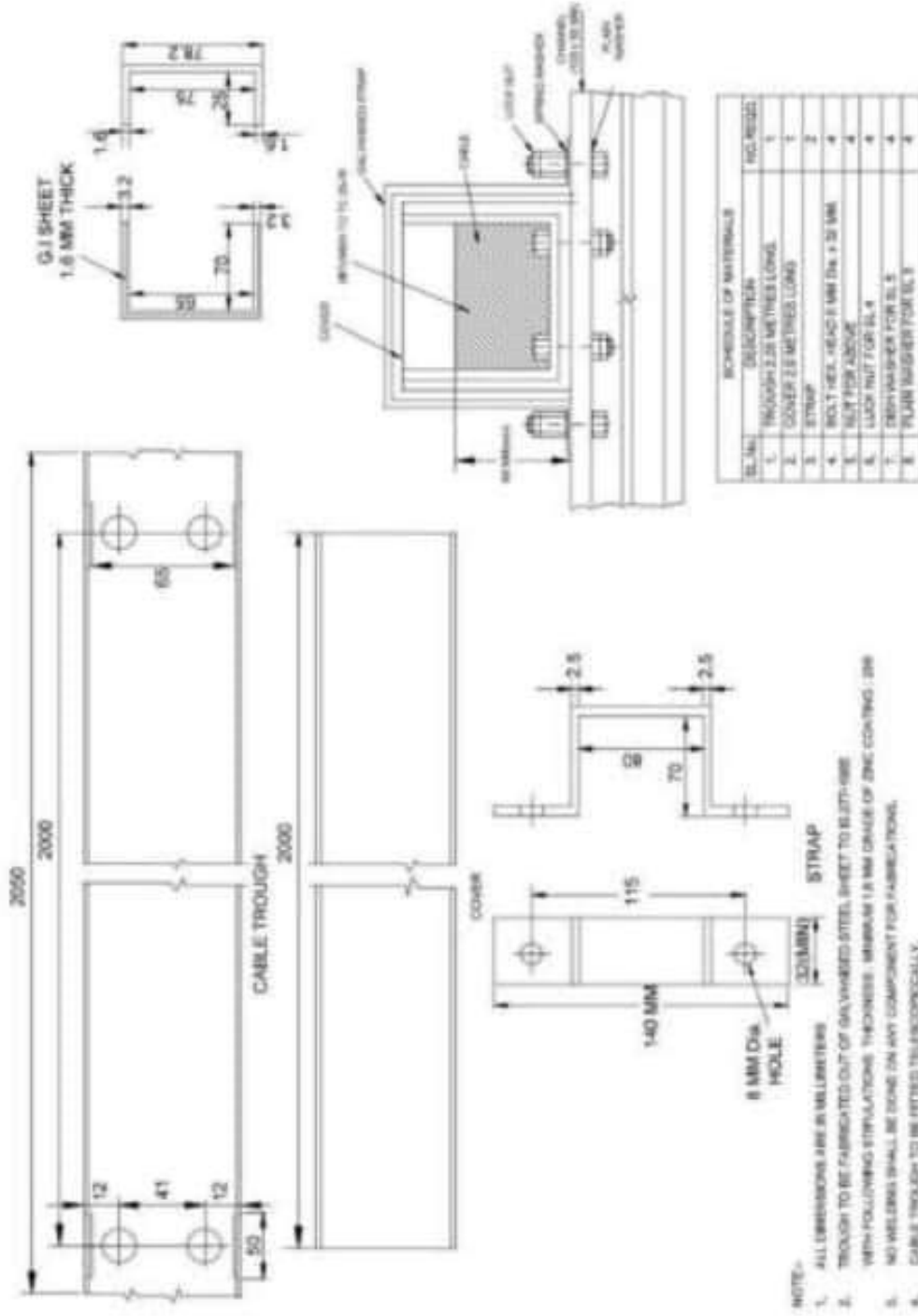
DRAWING FOR ROAD / TRACK CROSSING



NOTE: ALL DIMENSIONS ARE IN MILLIMETER.

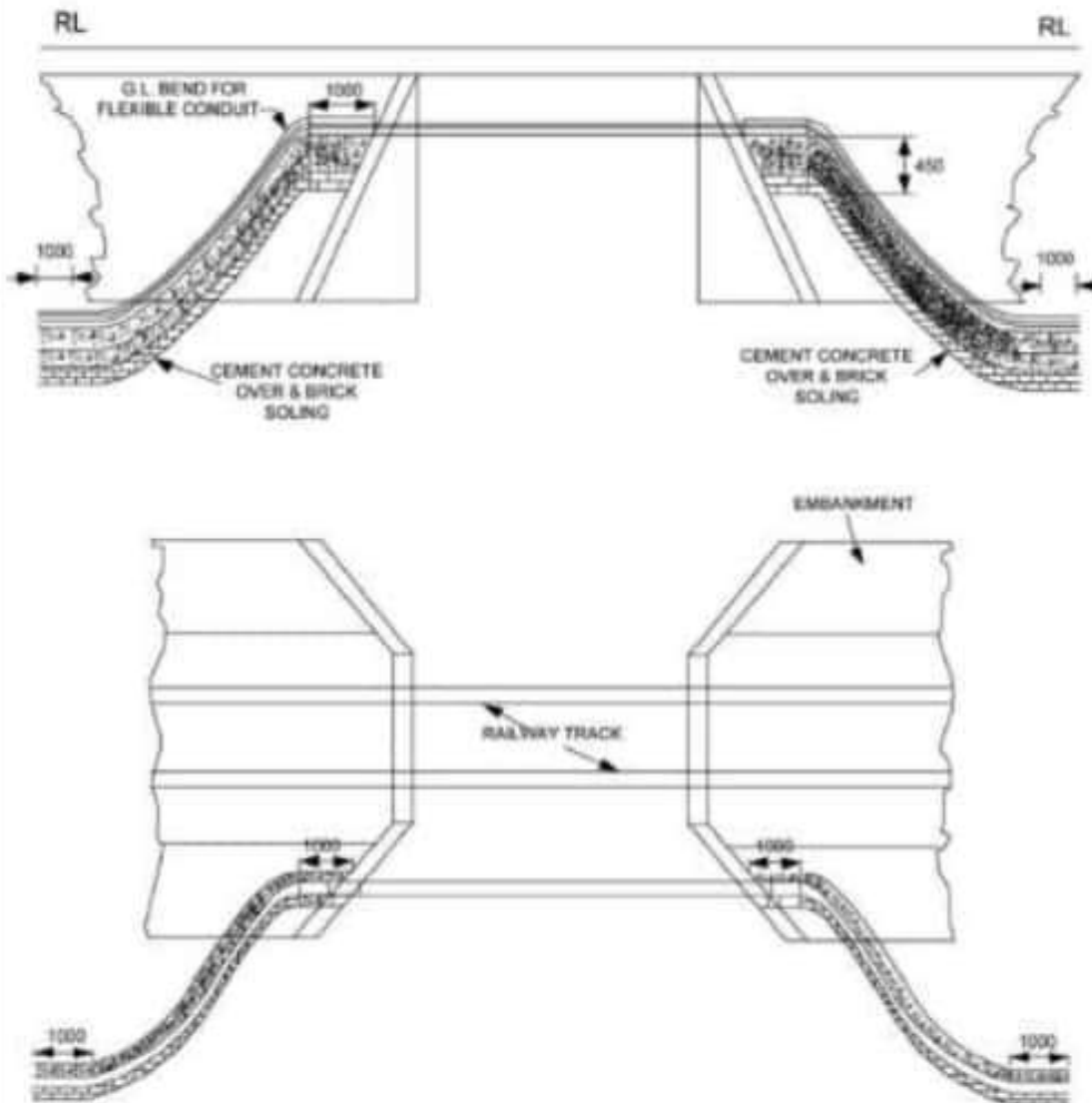
FOR GUIDANCE

DRAWING FOR CABLE TROUGH FOR METALLIC BRIDGE



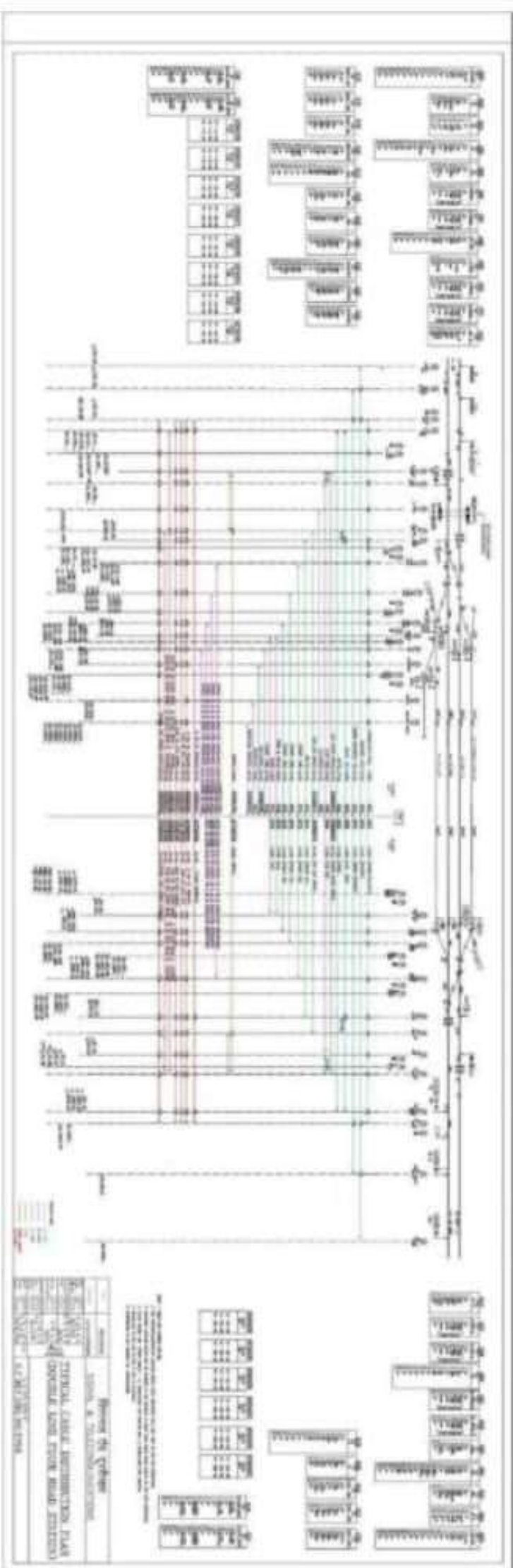
FOR GUIDANCE

DRAWING FOR CABLE LAYING ON CULVERTS WITH HIGH FLOOD LEVEL



NOTE:-
1. ALL DIMENSIONS ARE IN MILLIMETER.

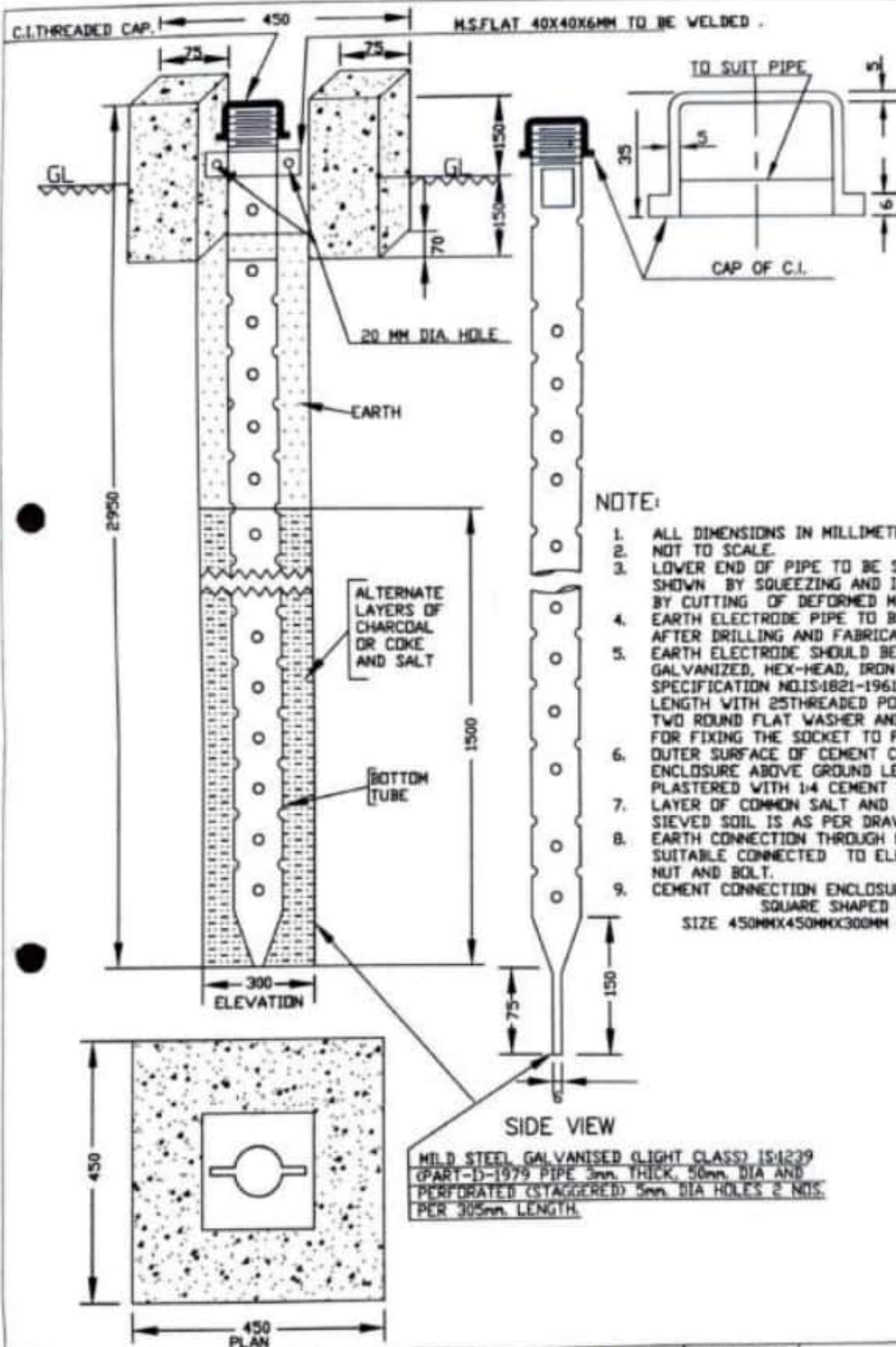
FOR GUIDANCE



S&T Drawing

Chapter - 13

**ELD, Earthing and Bonding
etc.**



HP-88 OF FILE No. 82.48/78 (PT.-2)	APPROVED	CHECKED	DRAWN & CHECKED	TYPICAL DRAWING FOR EARTH ELECTRODE (G.I. PIPE)	DRG. NO. 51/TYP/0097
E.R.	<i>[Signature]</i> (K. AGRAWAL)	<i>[Signature]</i> (N. SINGH)	<i>[Signature]</i> (N. K. UPPADHYAY)	<i>[Signature]</i> (A. DATTA)	
	PCSTE/ER/CSE/II/CR/DY.CSTE/V/D&D/HQ	ASTE/D&D/HQ	ASTE/HVH/HQ	SSE/V/D	