

GENERAL NOTE ON THE DESIGN

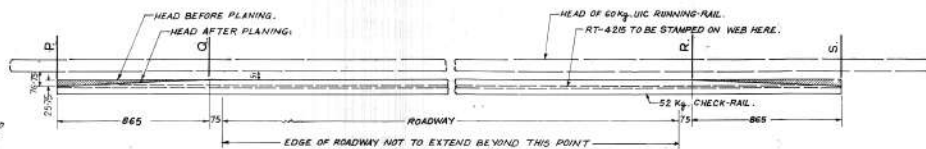
PLANING

(i). INSIDE HEAD:-

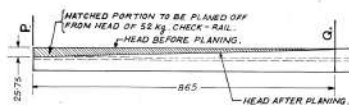
HEAD OF THE RAIL IS PLANED FROM 'Q' TO 'P' AND 'Q' TO 'S' SO THAT PLANED HEAD IS 7-75 mm FROM THE CENTRE LINE OF THE RAIL AT POINTS 'P' AND 'S' AS SHOWN IN THE SECTION.

(ii). OUTSIDE HEAD:-

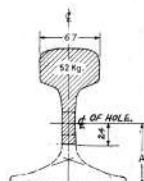
NO PLANING IS REQUIRED.



PLAN



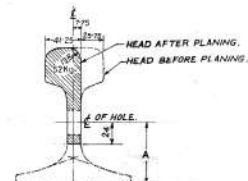
DETAIL OF PLANING



SECTION AT Q & R

ELEVATION

TABLE OF DIMENSION	
RUNNING RAIL.	mm
60 Kg (UIC)	66
52 Kg.	82



SECTION AT P & S

1. LENGTH OF CHECK-RAIL SHALL DEPEND ON ROADWAY. NO SLEEPER SHALL HAVE ITS END WITHIN 150 mm FROM THE END.
2. ELONGATED HOLES FOR FIXING CHECK-RAIL WITH GRACKET ON EACH SLEEPER SHALL BE DRILLED/PUNCHED IN CHECK-RAIL AT A SPACING OF 650 mm ON EXISTING SLEEPER SPACING.
3. FOR DETAIL OF ELONGATED HOLE IN CHECK-RAIL REFER TO DRG. NO. RDSO/T-4148.
4. ALL DIMENSIONS ARE IN MILLIMETRES.

NOTE

IRS: T-10

MILLIMETRES

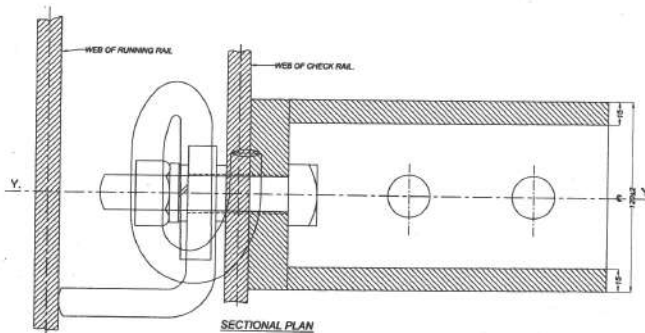
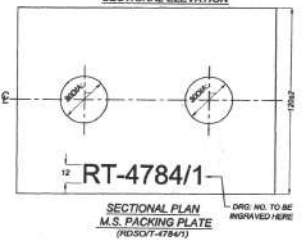
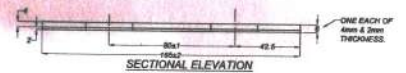
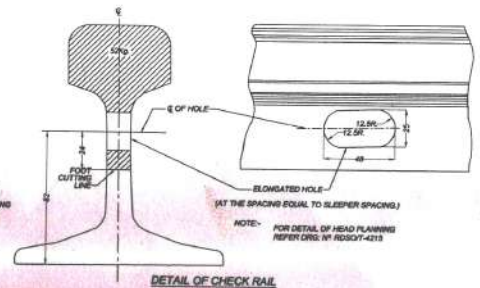
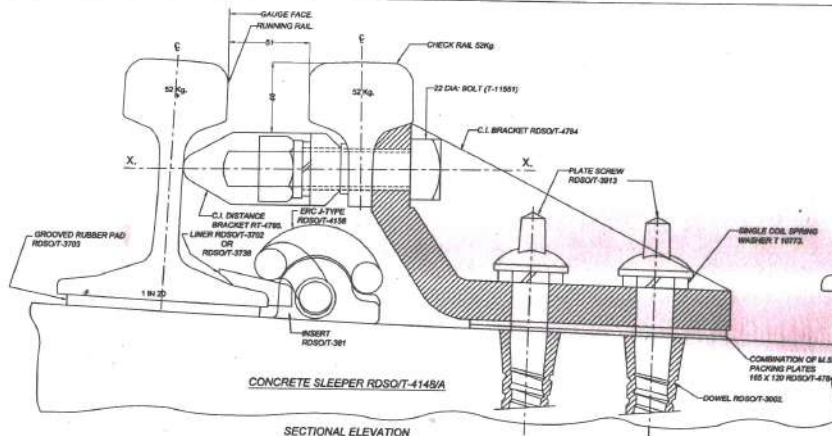


MS/2/161/1744/103

THIS DRAWING IS THE PROPERTY OF
RESEARCH DESIGN AND STANDARDS ORGANISATION
(MINISTRY OF RAILWAYS)
LUCKNOW-226011-INDIA
IT SHALL NOT BE USED, COPIED OR REPRODUCED IN
PART OR WHOLE WITHOUT PRIOR CONSENT IN WRITING.

R. D. S. O.
52 Kg SPECIAL CHECK-RAIL FOR
USE WITH PRESTRESSED
CONCRETE SLEEPER PCS-S1
TO DRG. NO. RDSO/T-4148.

DATE: _____ ADVANCE (T)
RDSO/T-4215



2. TO MAINTAIN HEIGHT OF CHECK RAIL IN LEVEL WITH RUNNING RAIL M.S. PACKING PLATES RDSOT-4784/1 SHALL BE USED WITH SUITABLE COMBINATION OF 4mm & 3mm THICK M.S. PLATES.
1. ALL DIMENSIONS ARE IN MILLIMETRES.
4. ENGAGE A WORK 5 kg. RAIL IS USED FOR CHECK RAIL. SUITABLE COMBINATION OF 4mm & 3mm M.S. PLATES DEPENDS ON WEAR RAIL. SHOULD BE USED UNDER C.I. BRACKET.
3. TO AVOID INFREINGEMENT OF ERIC WITH C.I. DISTANCE BLOCK J-TYPE ERIC TO DRG. RDSOT-4156 SHALL BE USED IN LIVING PORTION OF A TRACK ONLY.

NOTE

REFER PART DRG.	SCALE	ALT.	DESCRIPTION	DATE

THIS DRAWING IS THE PROPERTY OF
RESEARCH DESIGNS AND STANDARDS ORGANISATION
(MINISTRY OF RAILWAYS)
LUCKNOW-226011, INDIA
AND SHALL NOT BE USED, COPIED, REPRODUCED IN
PART OR WHOLE WITHOUT PRIOR CONSENT IN WRITING.

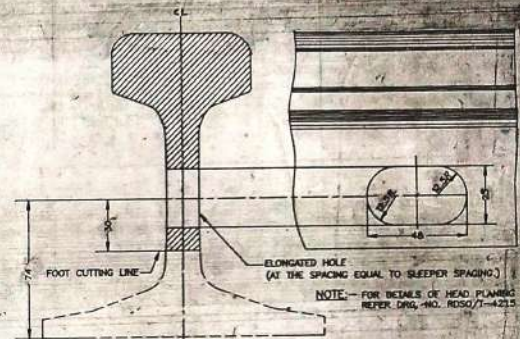
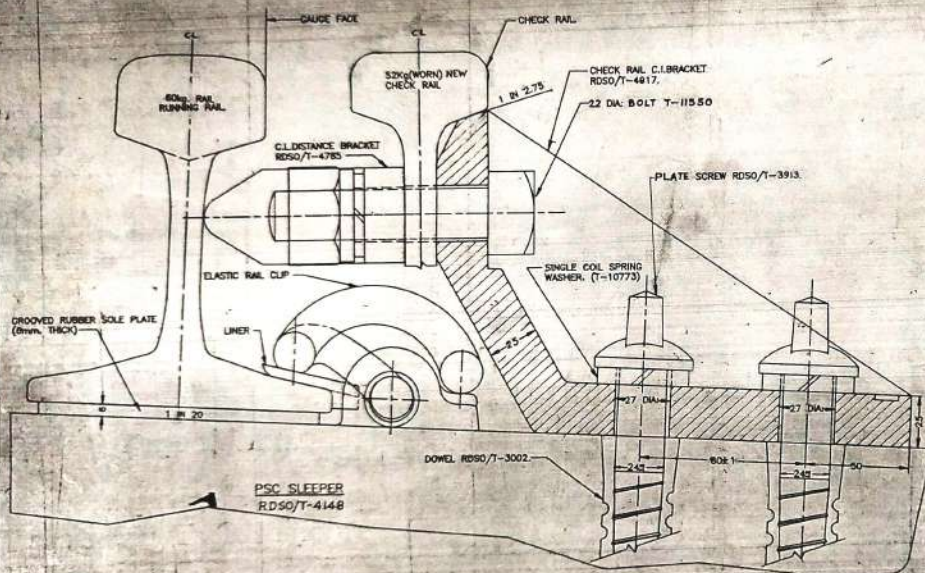
R. D. S. O.

RAIL SEAT ASSEMBLY FOR 52 Kg. CHECK
RAIL ARRANGEMENT ON PSC SLEEPER
B. G. 52 Kg. L-CROSSING.

STAR 5
CHECK
REV. 15-5-83

ADVANCE
15-5-83

R.D. S. O./T - 4783



DETAIL OF CHECK RAIL

1. IN THE CASE OF 52 kg (WORN) CHECK RAIL A SUITABLE PACKING PLATE MAY BE PROVIDED IN BETWEEN C.I. BRACKET & SLEEPER TOP TO MAINTAIN DESIRED HEIGHT OF CHECK RAIL.
2. SUITABLE PACKING MAY BE USED BETWEEN C.I. DISTANCE BRACKET & CHECK RAIL TO ENSURE CONTACT BETWEEN RUNNING RAIL & C.I. DISTANCE BRACKET.
3. THE LATEST VERSION OF DRAWING TO BE CONFIRMED FROM RDSO BEFORE TENDERING.
4. CHECK RAIL MUST BE CHECKED BY UNTO FOR ANY UNDERSIABLE DEFECTS BEFORE CUTTING TO REQUIRED SIZE.
5. ALL DIMENSIONS ARE IN MILLIMETRES.

NOTE

REFER PART DRAWINGS

MILLIMETRES

10 0 10 20 30 40

3. REVISED & REDRAWN ON AUTO CAD.

SPECIFICATION

SCALE

ALT. DESCRIPTION

DATE

RDSO/T-4916

THIS DRAWING IS THE PROPERTY OF
RESEARCH DESIGN STANDARDS ORGANISATION
(MINISTRY OF RAILWAYS), NEW DELHI
LICENCE-228011 INDIA
AND SHALL NOT BE USED/COPIED, REPRODUCED OR
PART OF SAME WITHOUT PRIOR CONSENT OF RDSO
R. D. S. O.
RAIL SEAT ASSEMBLY FOR
52 KG CHECK RAIL ARRANGEMENT
ON PSC SLEEPER B.G. 60KG
LEVEL CROSSING
NO. 10-82 (T)