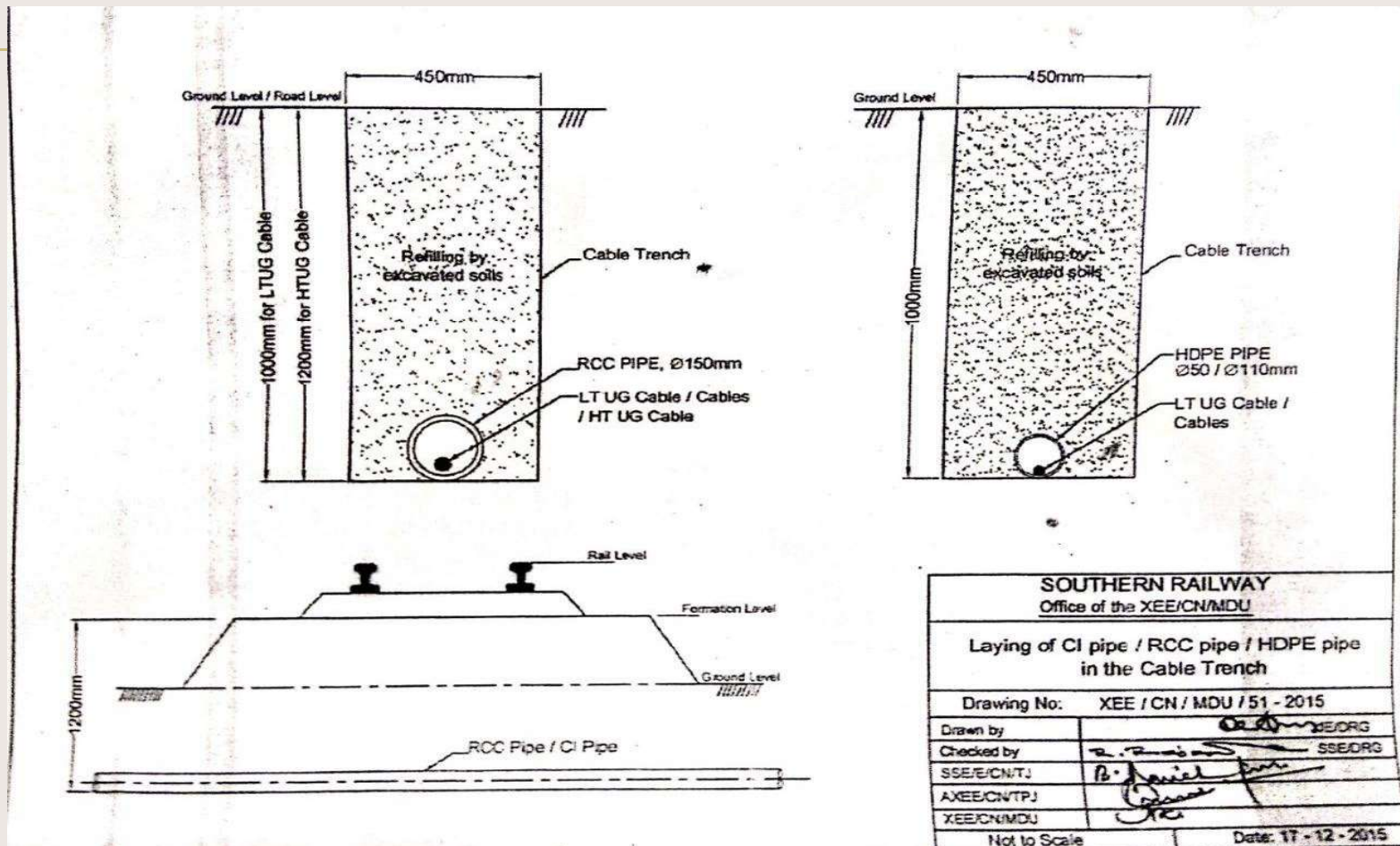
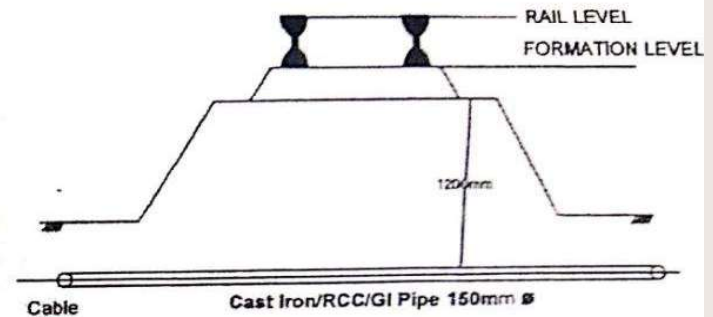
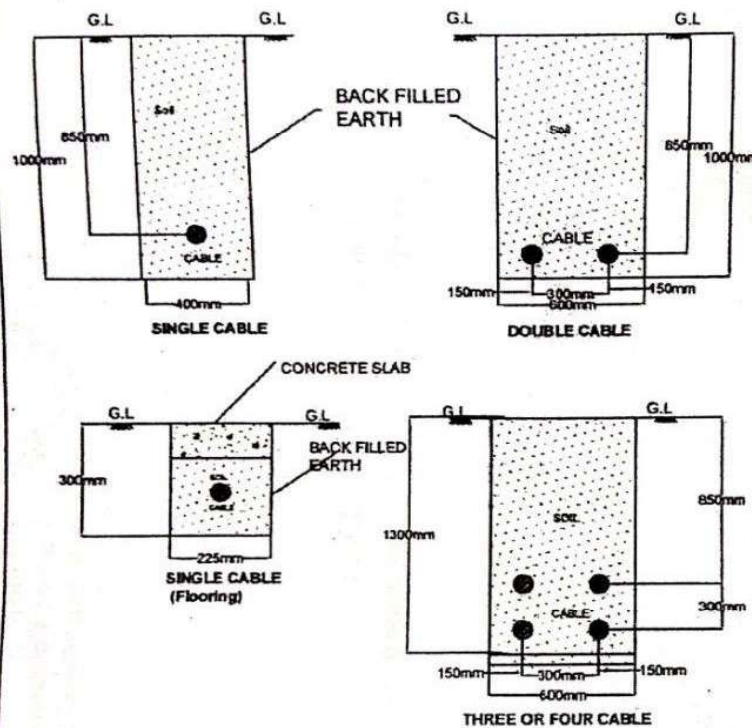


# Modified drawing-1



# Modified drawing-2

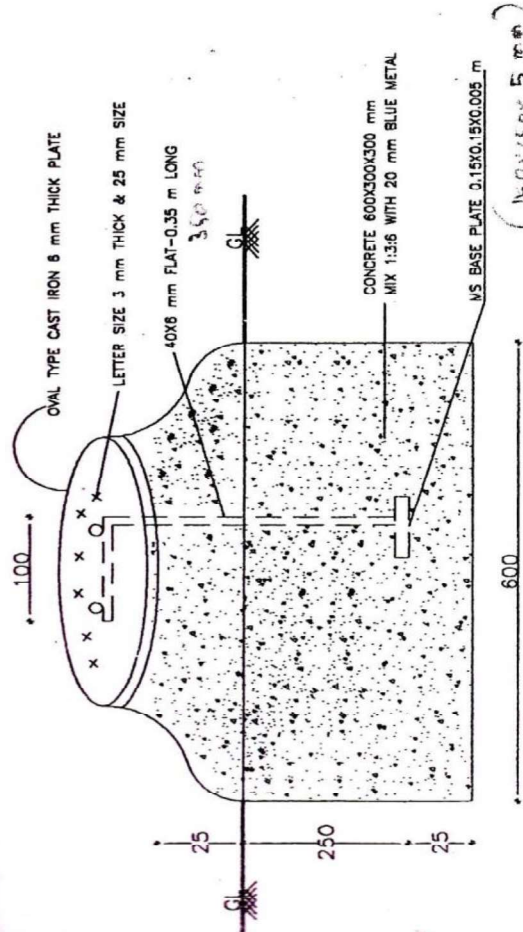


## Trench Crossing Across the Railway Track

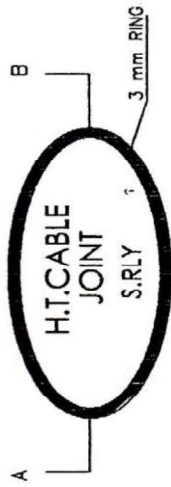
### NOTE:

1. Depth of Trench Should be More by 200 mm for HT Cable than that is Indicated in this Drawing
2. For Laying the Cable Refer Drawing No: XEE/CN/MDU/51/2015

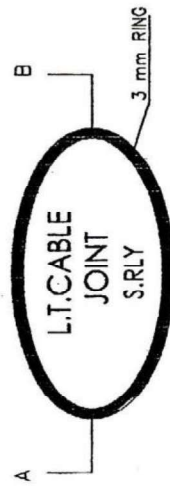
| SOUTHERN RAILWAY                              |                             |
|---|-----------------------------|
| TITLE : EXCAVATION OF TRENCH FOR CABLE LAYING |                             |
| :Drawing No:                                  | CEE/CN/MS/01-2018           |
| SEE/CN/Drg/MS                                 | <i>[Signature]</i>          |
| SSE/CN/HQ/MS                                  | <i>[Signature]</i> 01/01/18 |
| Dy. CEE/G/CN/MS                               | <i>[Signature]</i>          |



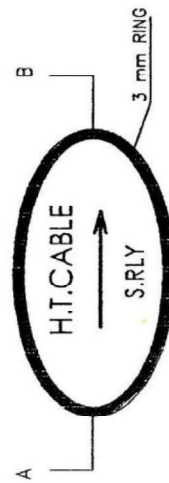
SECTION ON "AB" - ELEVATION



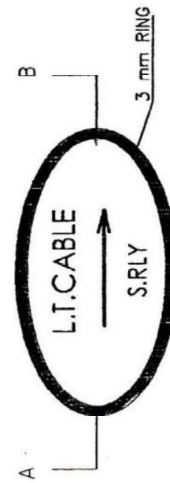
CABLE JOINT INDICATOR (HT)



CABLE JOINT INDICATOR (LT)



CABLE ROUTE INDICATOR (HT)



CABLE ROUTE INDICATOR (LT)

SOUTHERN RAILWAY

TITLE:

HT/LT CABLE ROUTE INDICATOR  
WITH CAST IRON PLATE

Dwg. No.

CEE/CN/MS/11-2004

*Dr. S. S. S.*  
XEE/CN/MMC

*ve*  
XEE/CN/ERS

*A. N. N.*  
XEE/CN/MDU

Dy. CEE/G/CN/MS

*S. S. S.*

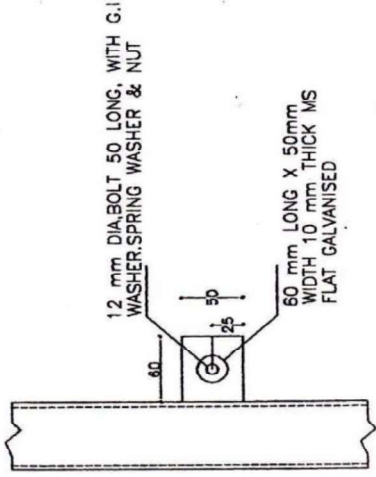
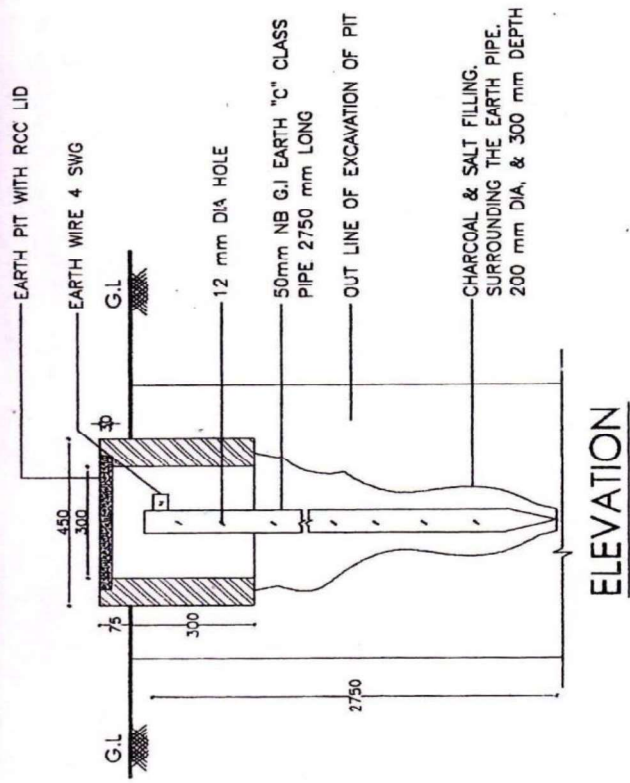
CEE/CN/MS

*R. P. S.*



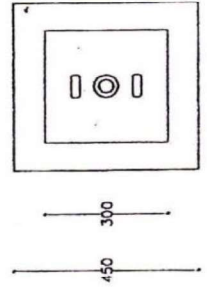
NOTE:-

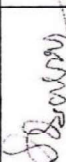



1. ALL DIMENSIONS ARE IN mm UNLESS STATED OTHERWISE
2. TUBE DIMENSIONS-50 mm NOMINAL BORE "C" CLASS HEAVY DUTY AS PER IS:1239.
3. CHARCOAL & SALT FILLING TO BE IN THE FORM OF A CYLINDER 200 mm DIA. SURROUNDING THE PIPES, 300 mm DEPTH OR THE QUANTITY MENTIONED IN THE SCHEDULE
4. EARTH POT SHALL BE MADE UP OF CEMENT CONCRETE WITH LID/BRICKWORK WALL WITH COVERING RCC SLAB.
5. IF SPECIFIED EARTH RESISTANCE CANNOT BE OBTAINED WITH ONE EARTHING. STATION-EARTHING STATIONS IN MULTIPLE SPACED AT A DISTANCE OF 10M & INTERCONNECTED TOGETHER MAY BE ADOPTED.
6. THIS DWG IS BASED ON RDSO DWG. NO. ET2/OHE/P/7020, ISS CODE FOR EARTHING STATION IS : 3043 AND CEE/MAS DRG.NO : EL/P/TYPE/122
7. ALL MATERIALS INCLUDING CEMENT STEEL, G.I PIPE ETC., SHOULD BE SUPPLIED BY THE CONTRACTOR ONLY.
8. EARTH PIT SIZE IS 0.9X0.9X2.9 m



12 mm DIA.BOLT 50 LONG, WITH G.I. WASHER,SPRING WASHER & NUT

60 mm LONG X 50mm WIDTH 10 mm THICK MS FLAT GALVANISED



|   |   |                                 |  |  |
|---|---|---------------------------------|--|--|
| SOUTHERN RAILWAY  |   |                                 |  |  |
| TITLE : L.T. EARTHING ARRANGEMENTS  |   |                                 |  |  |
| Dwg. No.  | CEE/CN/MS/16-2004   |                                 |  |  |
| <br>XEE/CN/MMC | <br>XEE/CN/ERS | A. N. Subramanian<br>XEE/CN/MDU |  |  |
| Dy.CEE/G/CN/MS  |                |                                 |  |  |
| CEE/CN/MS   |                |                                 |  |  |