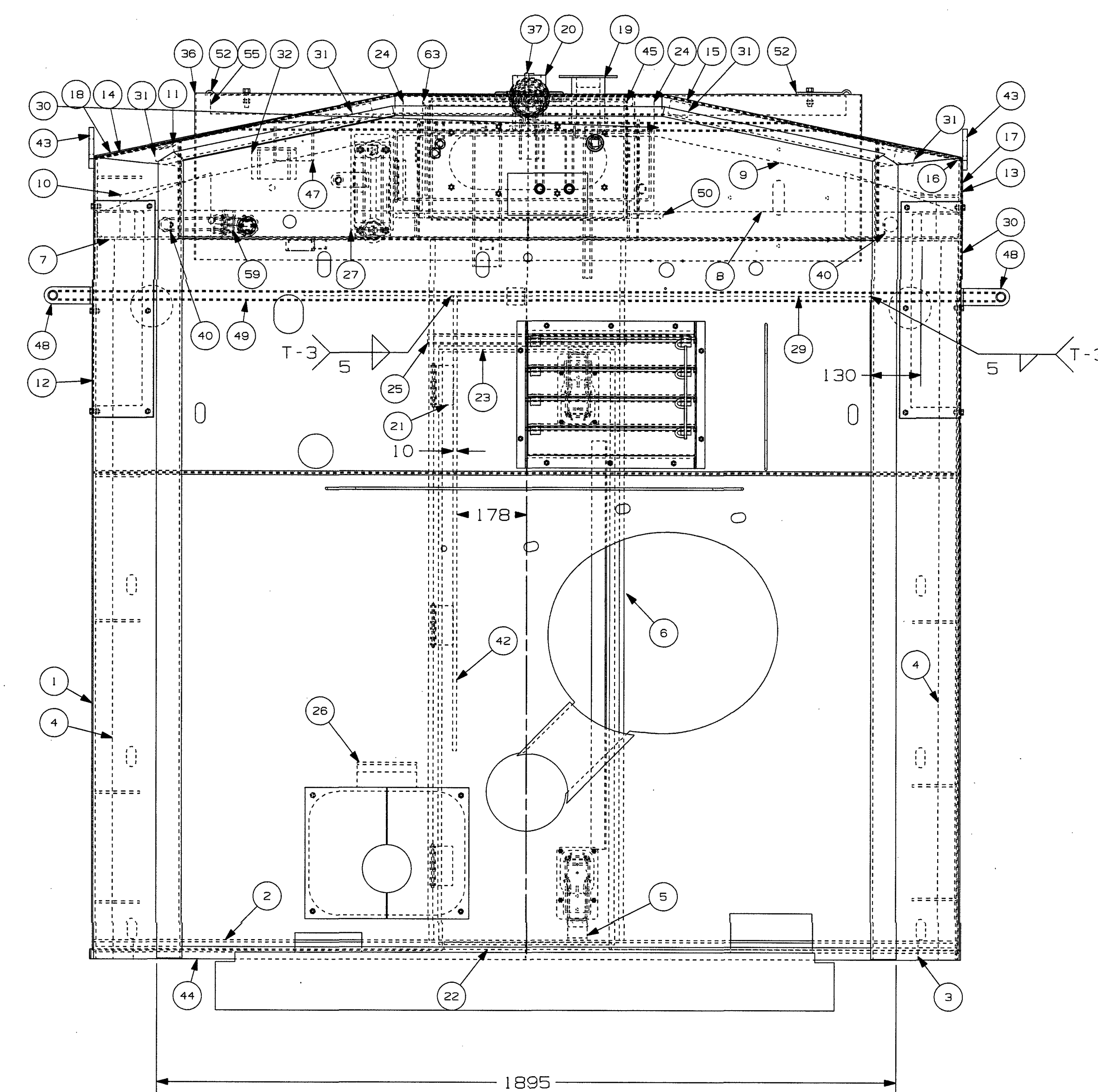
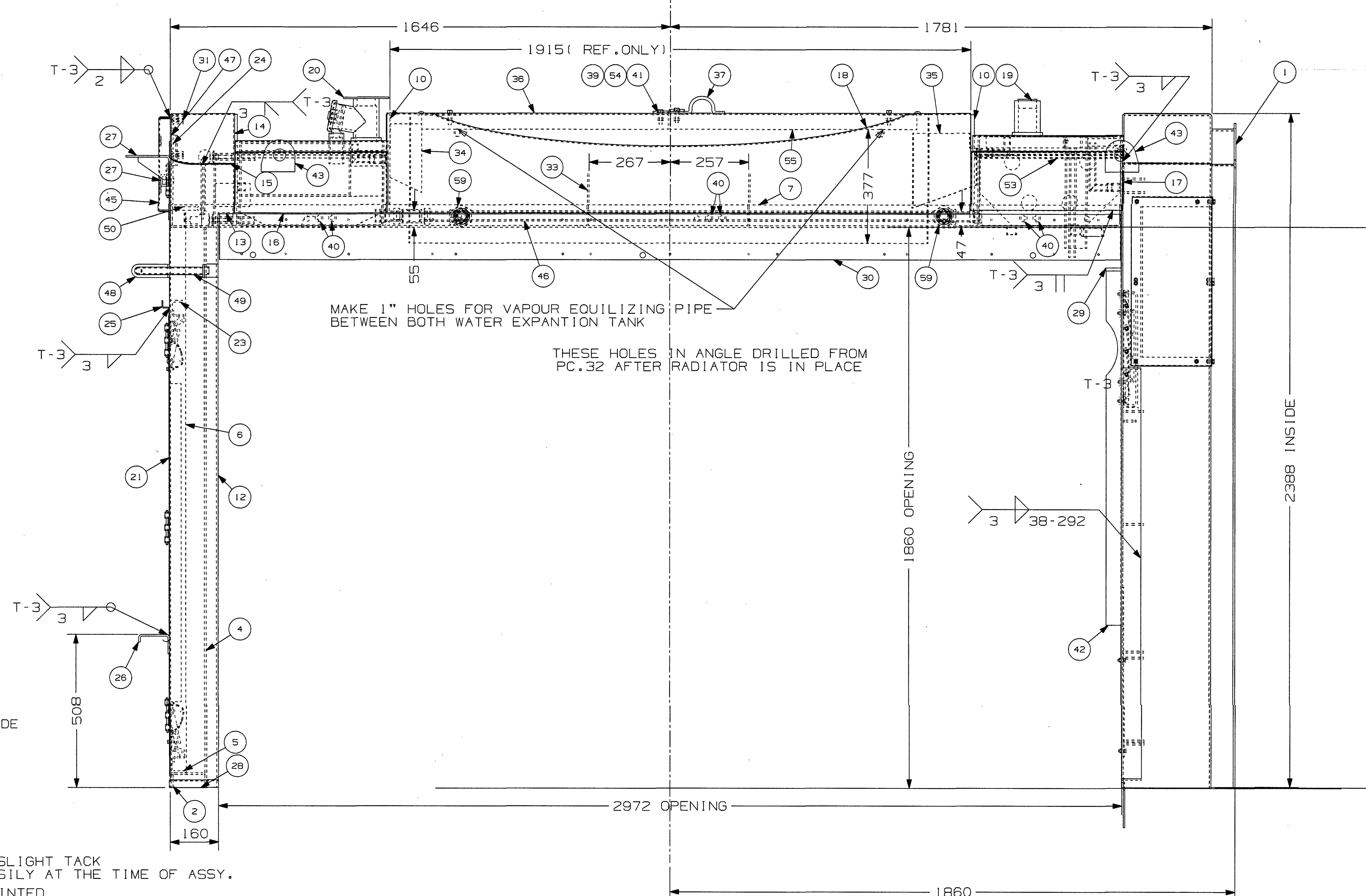
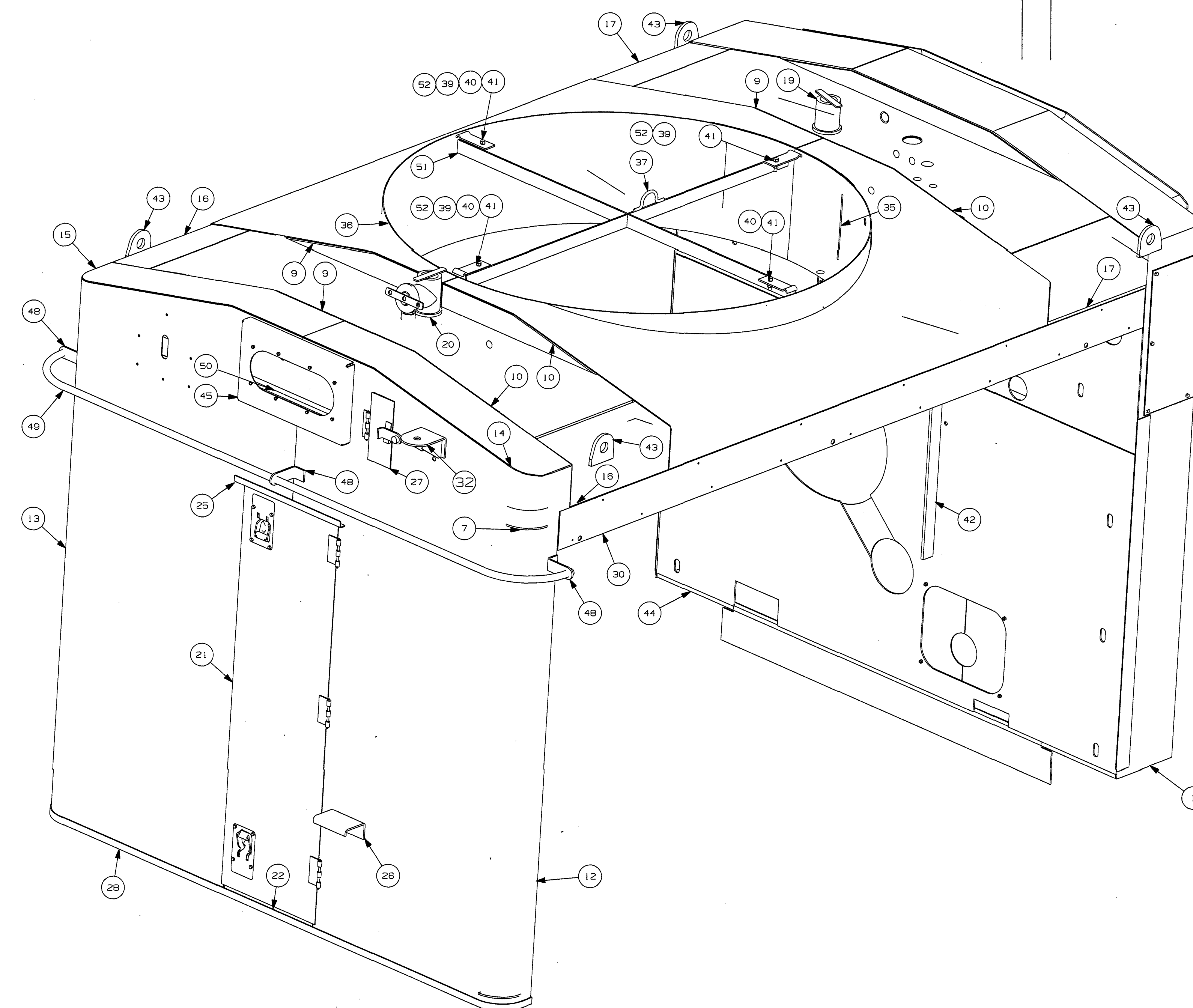
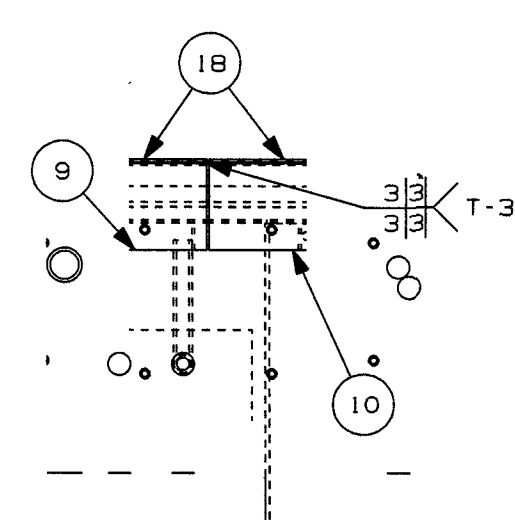


This technical drawing shows a top-down view of a circular machine component, likely a pump or motor housing. The central circular feature has a diameter of 1708 O.D. (Outside Diameter). The component is surrounded by a rectangular frame with various mounting points and structural details. Key dimensions include a central diameter of 1708 O.D., a vertical offset of 255, and horizontal offsets of 263 and 261. Numerous numbered callouts (1-61) identify specific parts, features, and fasteners. Section lines (T-3) indicate where the component is cut for cross-sectional views. The drawing is a detailed engineering specification for manufacturing.



THIS DRAWING IS A PROPERTY OF B&W/INDIAN RAILWAYS AND ANY UNAUTHORISED USE OF THE DRAWING WILL BE CONSIDERED ILLIGAL AND B&W/INDIAN RAILWAYS WILL HAVE RIGHT TO INITIATE LEGAL PROCEEDINGS AGAINST THE DEFAULTERS.

ISSUING AUTHORITY : SSE/RECORDS	TOLERANCES ON UNTOLERANCED
ALL DIMS ARE IN mm	DIMENSION TO