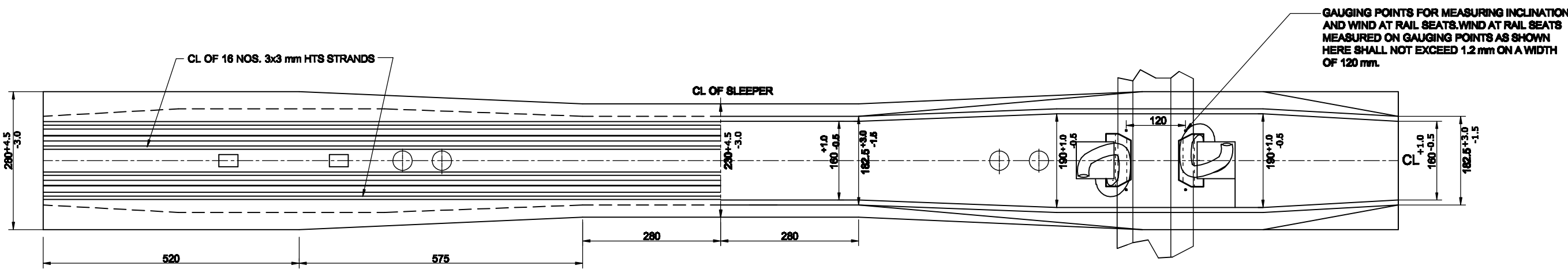
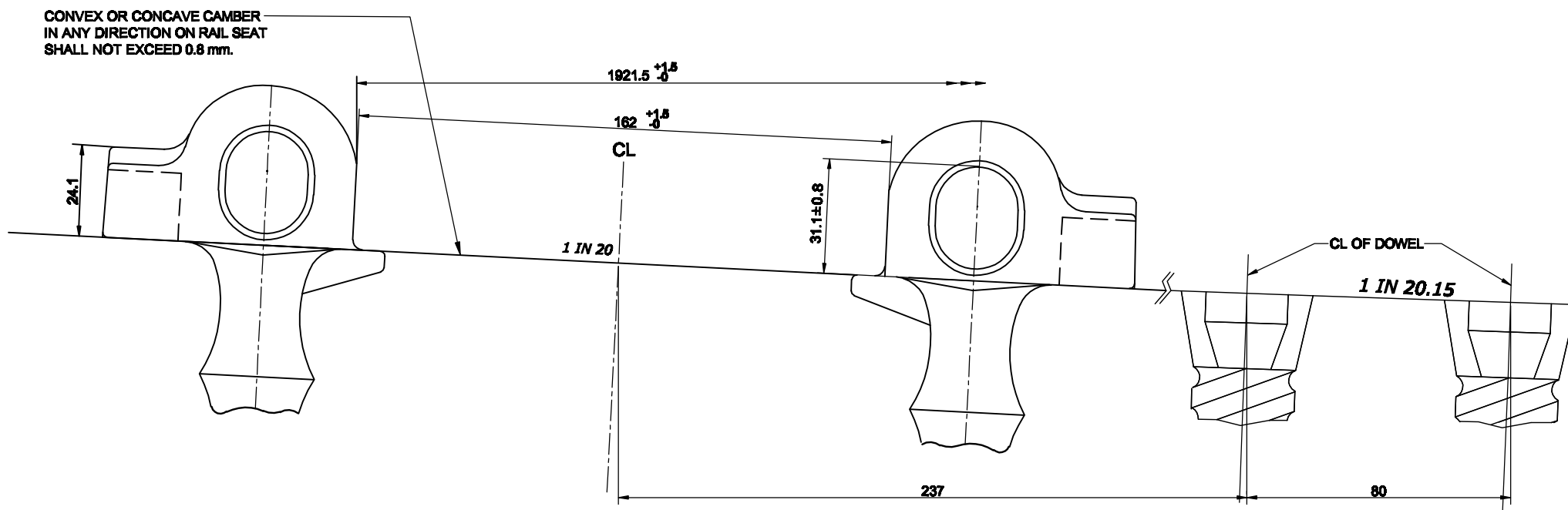


HALF SECTIONAL ELEVATION

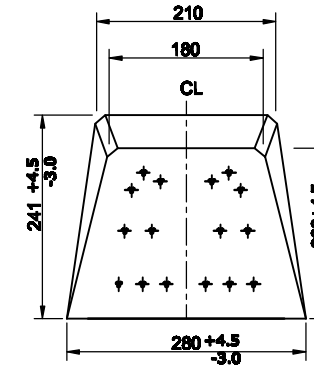


HALF SECTIONAL PLAN

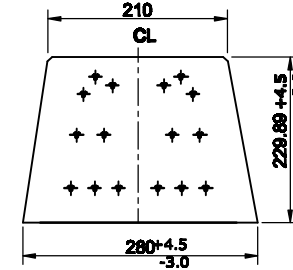


DETAIL OF FIXING INSERT AT RAIL SEAT

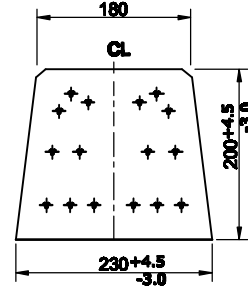
17. VALUES FOR STATIC BEND TEST & MF TEST FOR THIS SLEEPER SHALL BE AS PER WIDER SLEEPER TO DRG. NO. RDSO/T-8746 (LATEST ALTERATION).
18. THIS SLEEPER IS TO BE USED UPTO 25 t AXLE LOAD (FACTOR OF SAFETY-2.24) AT MAXIMUM SPEED OF 100 kmph AND FOR PASSENGER TRAFFIC UPTO FULL SECTIONAL SPEED.
15. LINERS ARE TO BE CHANGED FOR CHANGE IN RAIL SECTION AS PER TABLE OF QUANTITY SCHEDULE.
14. DOWEL HOLE SHALL BE AS PER DRAWING No. RDSO/T-5352.
13. CHECK RAIL ASSEMBLY TO DRG. NO. RDSO/T-8883 FOR 60 kg (UIC) / 60E1 RUNNING RAIL & RDSO/T-8884 FOR 52 kg RUNNING RAILS WITH 52 Kg CHECK RAIL MAY BE REFERRED FOR DETAILS.
12. LATEST ALTERATION NUMBER SHALL BE CHECKED BEFORE PLACING ORDERS.
11. BEFORE FIXING CHECK RAIL IN POSITION, ENSURE THAT ELASTIC RAIL CLIPS ARE OF GOOD QUALITY AND IN PROPER POSITION AND LUBRICATED.
10. C.I. BRACKETS, C.I. DISTANCE BRACKETS AND CHECK RAIL SHALL BE ASSEMBLED ON CESS BEFORE FIXING IT TO THE SLEEPER.
9. ADDITIONAL WASHERS MAY BE USED WITH C.I. DISTANCE BRACKET, IF REQUIRED, TO ENSURE ITS CONTACT WITH THE RUNNING RAIL WEB.
8. PART SHOWN IN QUANTITY SCHEDULE SHALL BE TO LATEST SPECIFICATION & DRAWING.
7. THE LATEST VERSION OF DRAWING TO BE CONFIRMED FROM RDSO BEFORE TENDERING.
6. FOR USE OF 60 kg (UIC) / 60E1 & 52 kg RAIL ON THIS SLEEPER TO DRG. No. RDSO/T-8969, REFER ASSEMBLY DRG. NO. RDSO/T-8754.
5. MARKINGS ON SLEEPERS SHALL BE TO DRG. NO. RDSO/T-2468.
4. EACH STRAND SHALL BE TENSIONED WITH AN INITIAL FORCE OF 29 kN.
3. CONCRETE SHALL CONFORM TO IRS/T-39 OF GRADE M-60.
2. ALL CORNERS SHALL BE ROUNDED OFF TO A RADIUS OF 5 mm UNLESS OTHERWISE SPECIFIED.
1. ALL DIMENSIONS ARE IN MILLIMETRES.



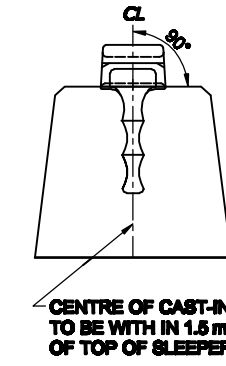
END ELEVATION



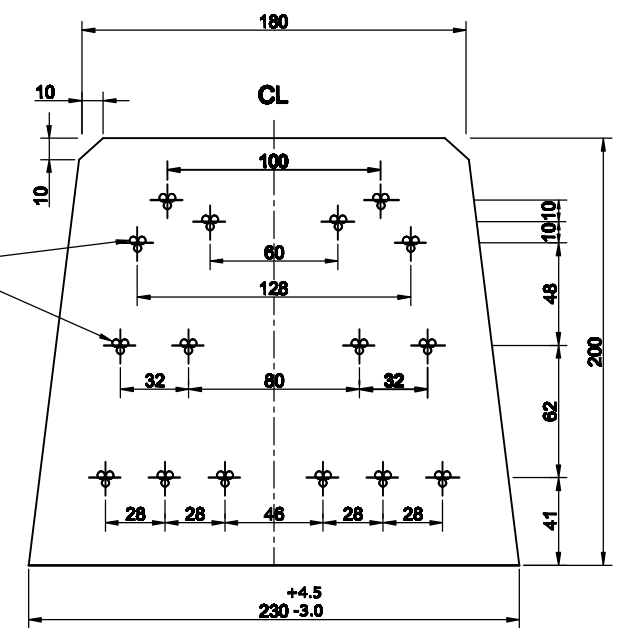
SECTION ON XX
(AT RAIL SEAT)



SECTION ON YY
(AT CENTER)



CENTRE OF CAST-IN INSERT
TO BE WITH IN 1.5 mm OF CL
OF TOP OF SLEEPER.



ENLARGED VIEW OF DISPOSITION
OF H.T.S. STRANDS

QUANTITY SCHEDULE

DESCRIPTION	DRG NO.	MATERIAL	SPECIFICATION	NO. PER SLEEPER	VOLUME PER SLEEPER	APPROX WEIGHT EACH IN kg	TOTAL WEIGHT IN kg
SLEEPER	RDSO/T-8969	CONCRETE	IRS/T-39	1	138237.5	333.78	333.78
REINFORCEMENT	RDSO/T-8969	H.T.S.	IS: 6006	16 NOS. 3X3 mm STRAND	-	0.4685	7.304
INSERTS	RDSO/T-8901	SGCI	IRS/T-46	4	-	1.484	5.836
10 mm THICK COMPOSITE GROOVED RUBBER SOLE PLATES	RDSO/T-8747	COMPOSITE	RDSO/M&C/RP-200/2007	2	-	-	-
LINERS	80 kg (UIC) / 60E1	RDSO/T-8751	GLASS FILLED NYLON-66	4	-	-	-
		RDSO/T-8752 (GF)	GLASS FILLED NYLON-66	2	-	-	-
		RDSO/T-8753 (NGF)	GLASS FILLED NYLON-66	2	-	-	-
	52 kg	RDSO/T-8749 (GF)	METAL LINER	2	-	-	-
		RDSO/T-8750 (NGF)	METAL LINER	2	-	-	-
	80 kg (UIC) / 60E1	RDSO/T-8748	METAL LINER	4	-	-	-
ELASTIC RAIL CLIP MARK- V	RDSO/T-8919	55 81 7	IRS/T-31	4	-	-	-
DOWEL	RDSO/T-3002	POLYETHYLENE	IRS/T-57	4	-	-	-
PLATE SCREW	RDSO/T-3913	MS	IRS:T- 16	4	-	-	-
C.I. BRACKET	80 kg (UIC) / 60E1	RDSO/T-8985	CI	2	-	-	-
	52 kg	RDSO/T-8986	CI	2	-	-	-
C.I. DISTANCE BRACKET	RDSO/T-4785	CI	IS:210 (GRADE-FG-200) IRS:T-7	2	-	-	-
SINGLE COIL SPRING WASHER	T- 10773	STEEL	IRS:T- 42	4	-	-	-
22 DIA BOLT	80 kg (UIC) / 60E1	T- 11550	STEEL	2	-	-	-
	52 kg	T-11551	STEEL	2	-	-	-

Manoj Kumar Singh

Digitally signed by Manoj Kumar Singh
Date: 2021.10.07 16:44:47 +05'30'

THIS DRAWING IS THE PROPERTY OF
RESEARCH DESIGNS AND STANDARDS ORGANISATION
(MINISTRY OF RAILWAYS)
LUCKNOW-226011-INDIA
AND SHALL NOT BE USED, COPIED, REPRODUCED IN
PART OR WHOLE, WITHOUT PRIOR CONSENT IN WRITING

R. D. S. O.

WIDER PRESTRESSED CONCRETE SLEEPER
FOR LEVEL CROSSING FOR 60 kg (UIC) / 60E1
/ 52 kg RUNNING RAIL WITH 52 kg CHECK
RAIL FOR 25 t AXLE LOAD

STAN R
CANG H
REV R

ADVANCE
27-08-2021

(T)

RDSO/T-8969