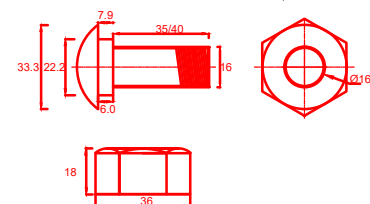
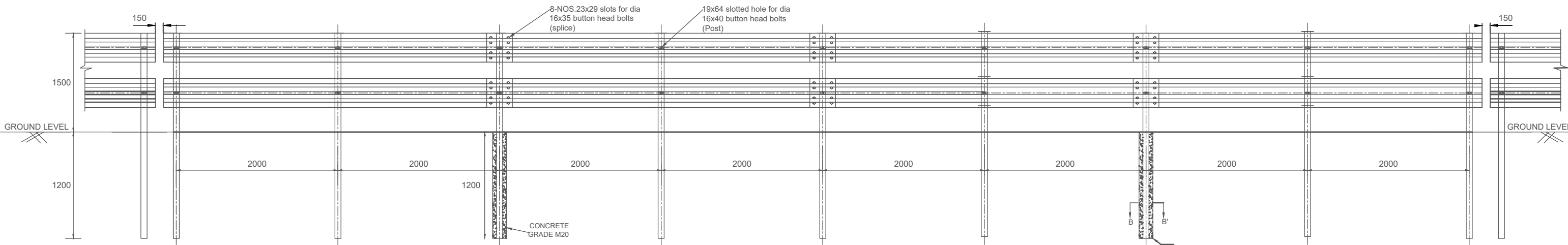


DETAILS OF POST



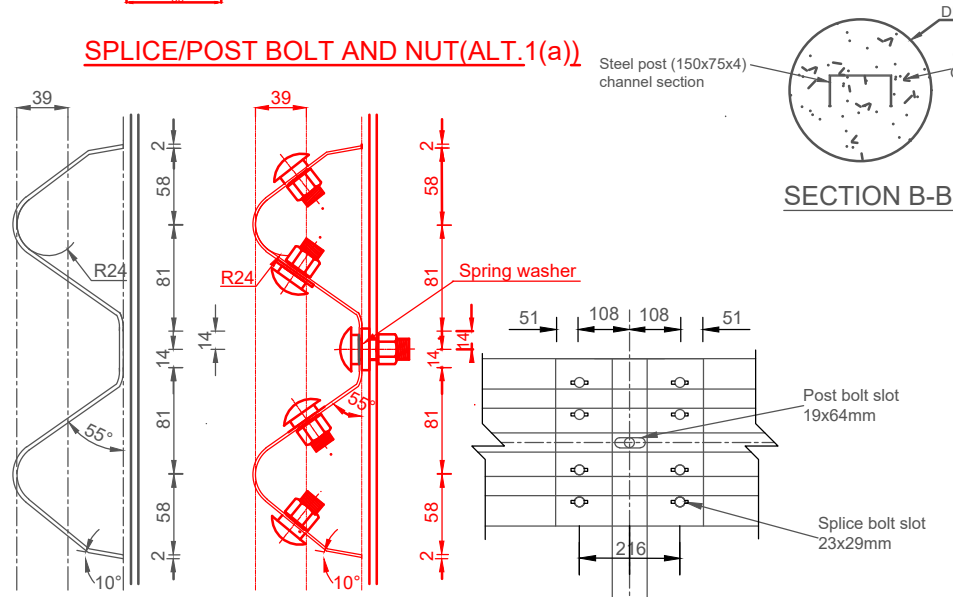
SECTION A-A'
(TYPICAL ARRANGEMENT FOR 16M LENGTH)

Signature block	
ALT.-1(a) TYPICAL DETAIL OF BOLT, NUT & THEIR ARRANGEMENT ALT.-1(b) NOTE NO. 12 ADDED & NOTE NO. 3 DELETED	DYCE-DESIGN-CCG
	XEN-DESIGN-CCG
	SSE-DESIGN-III-CCG
Sr.No.	DESCRIPTION
1	ALTERATION COLUMN

ALT. -1(b)

- GENERAL NOTES:**
- ALL DIMENSIONS ARE IN MM UNLESS NOTED OTHERWISE.
 - ALL PUNCHING DIMENSIONS UNLESS OTHERWISE STATED ± 1 MM.
 - ~~FOR GUARD RAIL BEAMS, POSTS & SPACER MATERIAL SHALL CONFORM TO IS-10740, GRADE II, IS-800, IS-2062 & IS-5986.~~
 - THE OVER LAPPING OF THE GUARD RAIL BEAM SHALL BE ACHIEVED USING SUITABLE SIZE WASHERS.
 - W-BEAM GUARD RAIL ARE TO BE FABRICATED & INSTALLED AS PER SECTION 811 OF MORTH SPECIFICATION FOR METAL BEAM CRASH BARRIER.
 - THE "W" BEAM, THE POST, THE FASTENERS SHALL BE GALVANIZED AS PER IS 4759 BY HOT DIP PROCESS(ZINC COATED WITH 0.55 KG/ PER SQUARE METER, MINIMUM, SINGLE SPOT).
 - THE GALVANIZING ON ALL OTHER STEEL PARTS SHALL CONFORM TO IS: 4759.
 - MINOR VARIATION IN C/C DISTANCE OF POST & DEPTH BELOW GROUND AS PER SITE CONDITION MAY BE APPROVED BY ENGINEER REPRESENTATIVE/ENGINEER-INCHARGE.
 - DRILLING FOR CONCRETING OF TWO PILLAR IN TYPICAL 16 PILLAR ARRANGEMENT AS SHOWN IN SECTION A-A' SHALL BE DONE BY AUGER BORING.
 - ARRANGEMENT OF FIXING OF BEAM & PILLAR SHOULD BE MADE ANTI-THEFT.
 - GAP OF 150MM TO BE PROVIDED AT 16M FOR ELECTRICAL ISOLATION AS SHOWN IN TYPICAL ARRANGEMENT "A".THE LENGTH MAY VARY AS PER SITE CONDITIONS SUBJECT TO MAXIMUM OF 16M.
 - GRADE OF STEEL FOR W- BEAM SHOULD BE OF IS 5986 GRADE -205 OR EQUIVALENT AND GRADE OF STEEL FOR CHANNEL SECTION POSTS SHOULD BE OF IS 5986 GRADE-355 OR EQUIVALENT.

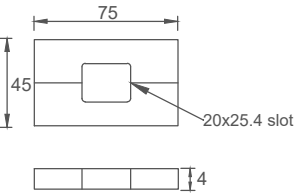
ALT. -1(b)



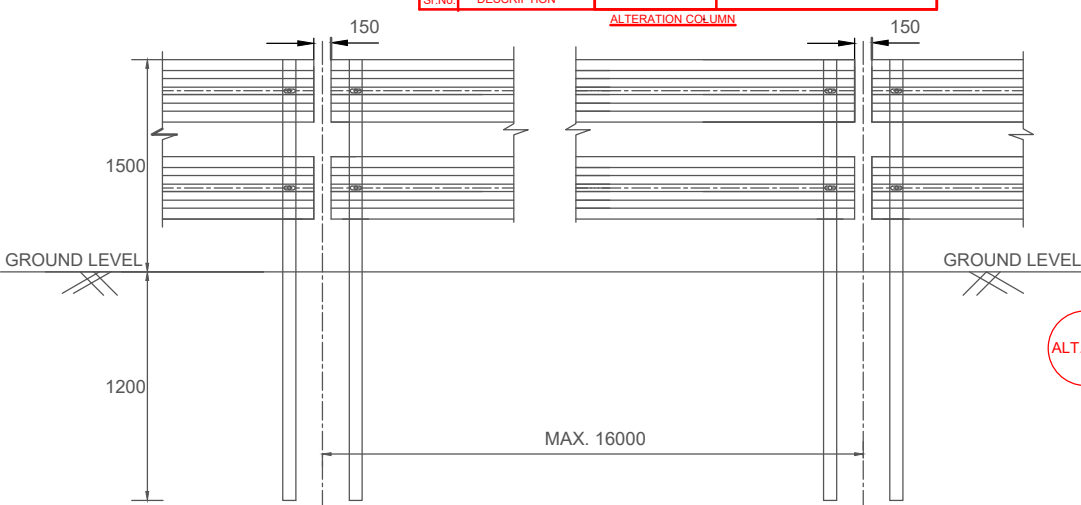
TYPICAL CROSS-SECTION OF GUARD RAIL BEAM

BOLT NUT ASSEMBLY (ALT.-1(a))

BEAM SPLICE



SPLICE WASHER



TYPICAL ARRANGEMENT "A"
ELECTRICAL ISOLATION AT EVERY 16M

TYPICAL DETAIL OF W-BEAM TYPE METAL FENCING	
PED/CE(P) RB	ATUL B K HARG
DIR CE(PLG.) RB	PRADEEP NAGAR
DYCE-DESIGN-CCG WR	HIMANSHU SHARMA
XEN-DESIGN-CCG WR	TANUJ GUPTA
SSE-DESIGN-CCG WR	SHAILESH SHEKHAR SHETTY