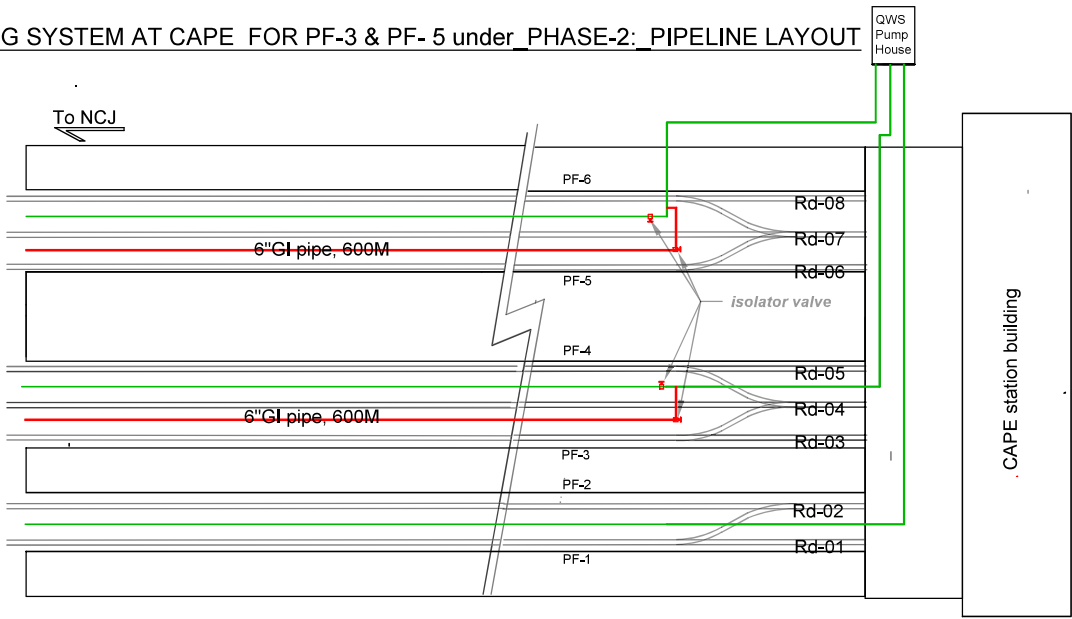


QUICK WATERING SYSTEM AT CAPE FOR PF-3 & PF- 5 under \_PHASE-2\_: PIPELINE LAYOUT

Note:

- 1) Color Coding  
Red: Proposed pipeline routes and isolator valves  
Green: Existing pipeline infrastructure
- 2) Scope of Proposal  
The proposal comprises: (a) Provision of 6" diameter GI quick watering pipelines for PF-3 and PF-5, branching from the existing lines of PF-6 and PF-4 respectively. (b) Installation of isolator valves at strategic junctions (marked in red) to regulate flow and enable selective operation.
- 3) Operational Logic  
The proposed arrangement allows QWS activation for only one platform at a time within each pair:  
i) Either PF-6 or PF-5  
ii) Either PF-3 or PF-4  
This selective operation is achieved by manipulating the isolator valves,



Sanctioned work as per LAW 25-26 sLno. 104/UW2; PROJECT ID 10,06,53,25,3,82,003

RAKESH K  
PRABHU  
Sr.DME/Co./TVC  
RANJITH  
K P  
Sr.DSTE/TVC

Noush  
ad A  
Sr DEE/G/TVC  
MARIAPPAN M  
Sr.DEN/Co/TVC

RENJITH R  
Sr.DEE/TRD/TVC  
JERIN G  
ANAND  
Sr.DOM/TVC

DIVYAKANT  
CHANDRAKAR  
DRM/TVC

Drg. no V M 180/QWS/PH-2\_/ERS/ PF-5/layout

QUICK WATERING SYSTEM AT CAPE FOR  
PF-3 & 5 under \_PHASE-2\_: PIPELINE LAYOUT

Drg not to scale

Drawn: SSE/Drg/Mech/TVC