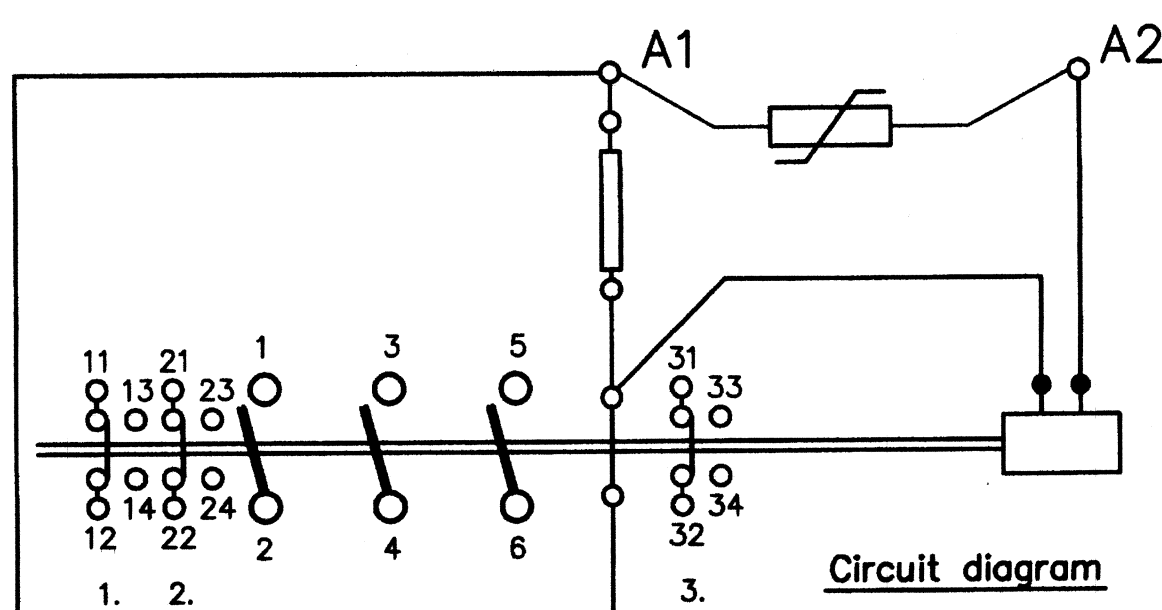
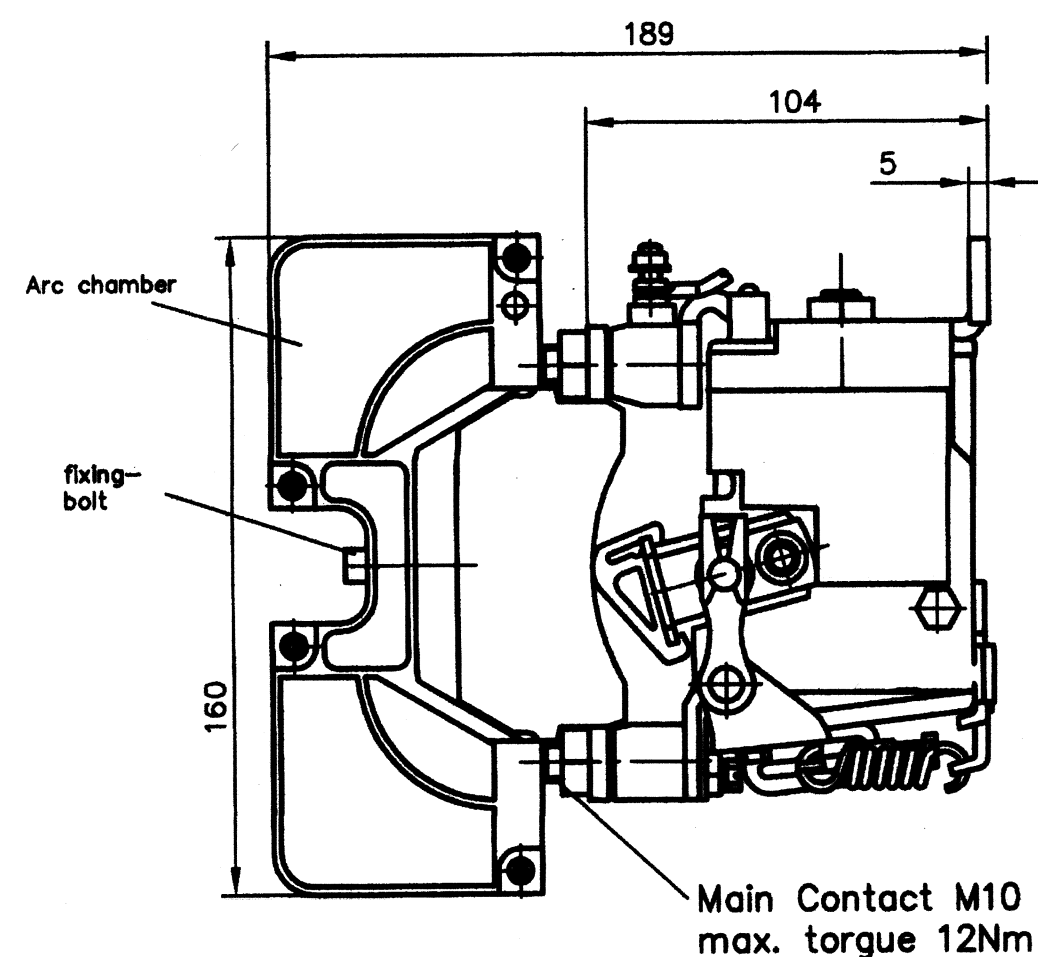
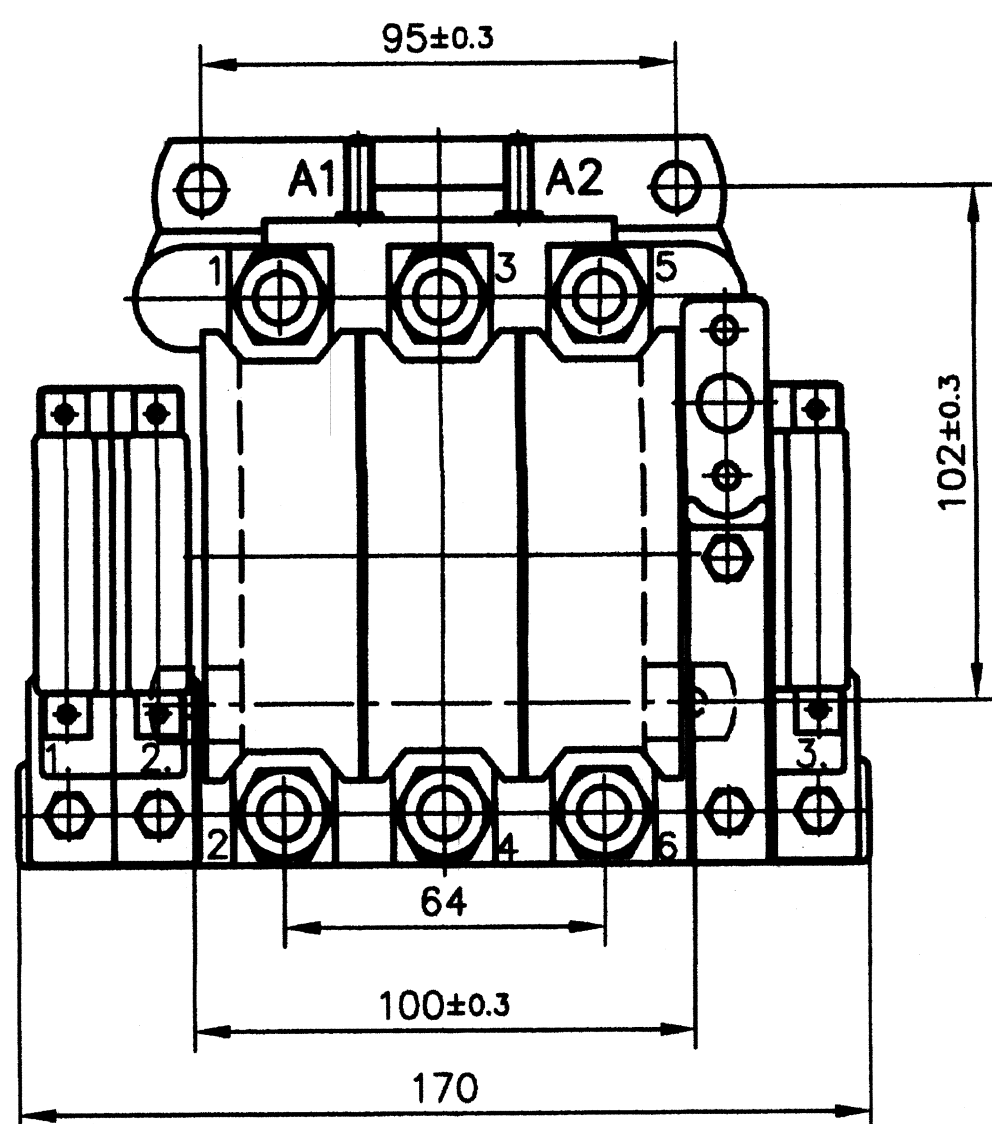


18140117

ALT.	DATE	ALTERATION	VERIFIED BY SSE/D	VERIFIED BY DY.CDE/EM
Ab	08/05/2017	1. ITEM DESCRIPTION MODIFIED.		



Circuit diagram

NOTES:

- MAKE: SCHALTBAU
PART NO:1-1648-301384

OR CUTTLAR HAMMER/EATON MAKE
CONTACTOR TO SUIT ABOVE TECHNICAL
DATA AND MOUNTING DIMENTION.
- PROVISION OF PROPER I-MARKS, SURFACE/ ANTIRUST TREATMENT, PACKING & INSTRUCTIONS TRANSPORTATION/
HANDLING INSTRUCTION ETC, AS PER SPECIFICATION NO. WDG4/EL/PS/09(REV.01/LATEST) SHOULD BE ENSURED.

ISSUEING AUTHORITY: SSE/RECORD
ALL DIMENSIONS ARE IN MM.

THIS DRAWING IS A PROPERTY OF DLW/INDIAN RAILWAYS AND ANY UNAUTHORISED USE OF
THE DRAWING WILL BE CONSIDERED ILLGAL AND DLW/INDIAN RAILWAYS WILL HAVE RIGHT
TO INITIATE LEGAL PROCEEDINGS AGAINST THE DEFAULTERS.

1

Preliminary – Technical data:

GeneralMechanical life : $> 2 \times 10^6$ Cycles

Weight : app. 5,3 Kg

Protection per EN 60529: IP 00

Rated insulation voltage per EN 60947:
PD 3 / OV 3 : 630V

Testing Voltage with 50 Hz, for 1s

Contact to ground : 2.5 kV

Contact to contact : 2.5 kV

Coil to ground : 2 kV

Ambient temperature range : -40°C to $+85^{\circ}\text{C}$ Mounting position : preferably vertical
(coil connection on top)
horizontal
(magnetic drive down)Maincontact3 switching elements S307A – NO
for AC-applicationsContinuous thermal current I_{th} : 250A
with wire cross-section $> 150\text{mm}^2$

preliminary for further technical details see catalogue B40

Magnetic drivee with power saving resistor
(Back EMF: suppression with varistor)Coil voltage U_{nom} : 72V

Voltage range : 50.4V to 90V

Cyclic duration factor : 100 %

Operating times at U_{nom} .Pull in : < 100 msDrop out : < 90 msPull in power : $< 200\text{W}$ at U_{nom} and cold coil
Holding power : $< 38\text{W}$ Auxiliary contacts3 switches S826 a L with clamp-connection
Continuous thermal current $I_{th} = 10\text{A}$
for further technical details see catalogue D26Arc chamber3 times – S307 AC – with fixing bolt
to be attached and hand-screwed

preliminary for further technical details see catalogue B90

QTY.	DESCRIPTION	ITEM NO.	DRG. NO.	PART NO.	MATL./SPEC
GROUP : HHP LOCO			SUPERSEDED BY		
C156 D30-S-72EV-H3-Q050 CONTACTOR 3 POLE, 250 AMP.			SUPERSEDES		
			SCALE	VERIFIED BY S.S.E.	
			PROJECTION 	CHD. DRN.	
			ALT.	Aa	Ab
DIESEL LOCOMOTIVE WORKS VARANASI			DRG.NO. DRG18140117		
			PART NO. 18140117		

DY. CDE/EM
DATE: 08/05/17

