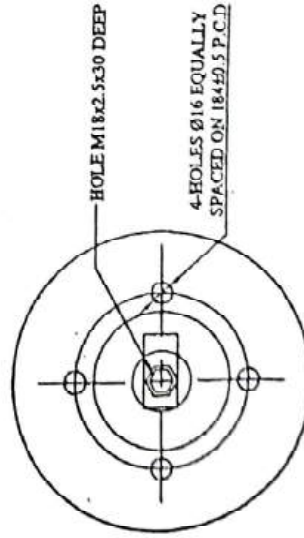
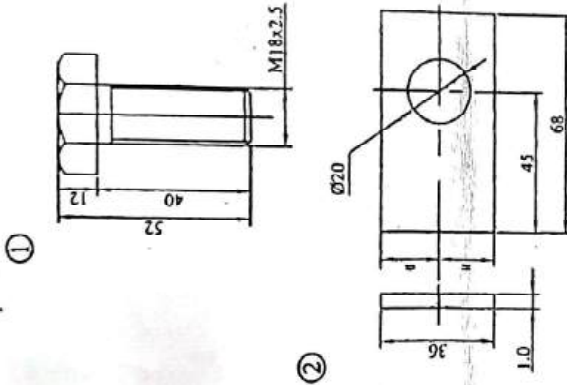
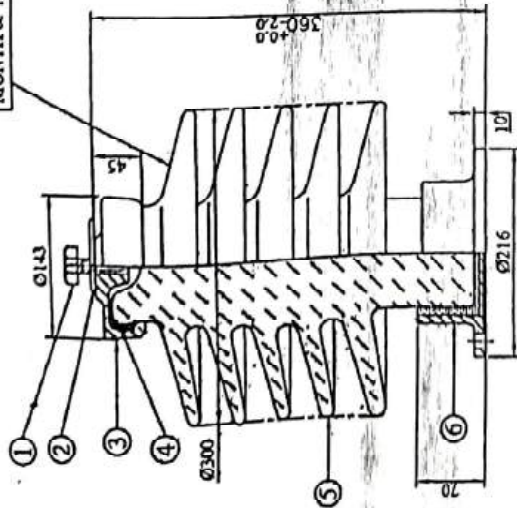


FIRST ANGLE PROJECTION

3 983 05 18400

DRG No.

REV

INDIA
MONTH & YEAR

अंतरकायिनि अनुमोदित
Provisionally Approved
दि. 18.08.23
C.D. 3252/Post

-HOLE M18r2 5x30 DFEF

4-HOLES Ø16 EQUALLY
SPACED ON 184±0.5 P.C.D.

1. MECHANICAL CHARACTERISTICS

- | | 14 ^a | 14 ^b | 14 ^b -m |
|---------------------------|-----------------|-----------------|--------------------|
| a) TENSILE STRENGTH (MPa) | 3500 | 1000 | 3500 |
| b) BENDING STRENGTH (MPa) | 14 ^a | 14 ^b | 14 ^b -m |
| c) TORSION STRENGTH (MPa) | 14 ^a | 14 ^b | 14 ^b -m |

II. ELECTRICAL CHARACTERISTICS

- | | |
|----------------------------------------|----------------|
| a) POWER FREQUENCY FLASHOVER VOLTAGE | |
| i) DRY | $kV(rms)$ 130 |
| ii) WET | $kV(rms)$ 88 |
| b) POWER FREQUENCY WITHSTAND VOLTAGE | |
| i) DRY | $kV(rms)$ 120 |
| ii) WET | $kV(rms)$ 80 |
| c) VISIBLE DISCHARGE INCEPTION VOLTAGE | $kV(rms)$ 35 |
| d) IMPULSE WITHSTAND VOLTAGE | |
| i) POSITIVE POLARITY | $kV(peak)$ 200 |
| ii) NEGATIVE POLARITY | $kV(peak)$ 200 |

III. CREEPAGE DISTANCE = 1050 mm

III. CATERPILLAR DISTANCE = 1000 ft.

1	BASE	S. G. IRON	1
2	SHELL	PORCELAIN	1
3	BINDING MATERIAL	CEMENT	-
4	CAP	S. G. IRON	1
5	LOCK PLATS	STEEL	1
6	HEX HEAD BOLT	Std	1
ITEM No.	DESCRIPTION	MATERIAL	QTY.

ELECTRICALS LTD., 505012	SCALE	WEIGHT (kg)	REF TO ASSY. CARD	ITEM No.	NO. OF ITEMS
	NTS	26			
		(Approx)			
INSULATOR			CARD CODE	DRAWING NO.	REV.
				3 983 05 18400	01
					No. OF SHEETS
NAME		SIGN	DATE		
V B KUMAR		<i>[Signature]</i>	10.08.2023		
END		AVM	10.08.2023		
APPO		P.R.V	10.08.2023		

[illegible]

2
3
4
5
6
7

54T.24 SIZE A3 420 x 297

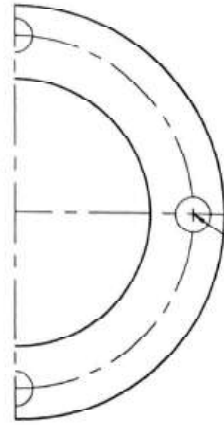
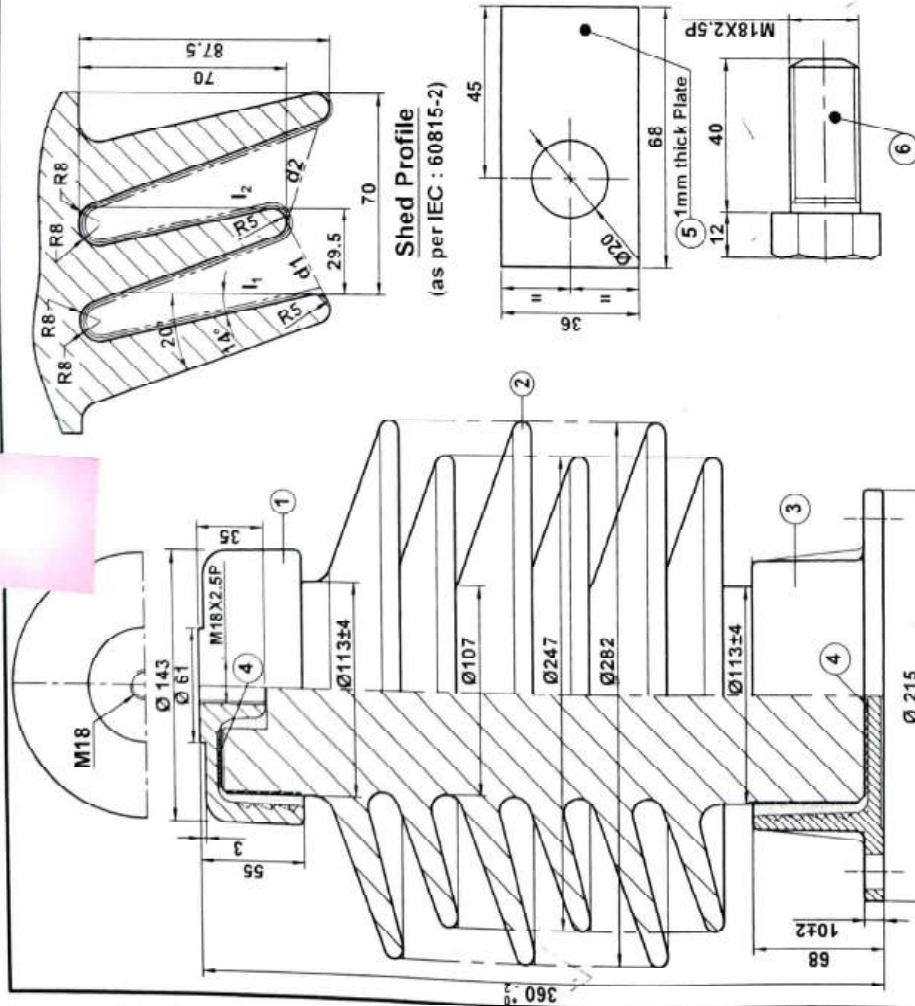
SHED PROFILE CONFORM IEC: 60815-2

PARAMETERS		VALUES AS PER SHEDS
S/P	> 0.65	70/87.5 = 0.80
Id/d	< 6.0	176/32 = 5.5
P.F.	> 0.80	2X87.5 + 2X70*70 / 358 = 1.07
C.F.	< 3.75	1050/340 = 3.05

NOTES :-

- Standard applicable IS:4318 / CLW Spec.No.CLW/ES/AC/H8 & IS:8350 CL-I
- Min. nominal creepage distance mm. 1050 (Design 1090 mm.)
- Protected creepage distance mm. 525
- Arc. over distance mm. 340
- Tensile failing load kgf 3500
- Bending failing load kgf 1000
- Torsional failing load kgfm 550
- Power frequency flashover voltage - Dry kV(rms) 130
- Power frequency flashover voltage - Wet kV(rms) 88
- Power frequency with stand voltage - Dry kV(rms) 120
- Power frequency with stand voltage - Wet kV(rms) 80
- Impulses withstand voltage (1.2/50 μ sec.) +ve kVp 200
- Impulses withstand voltage (1.2/50 μ sec.) -ve kVp 200
- Visible discharge voltage (More then) kV(rms) 35
- Material of Insulator - Porcelain
- Tolerance unless specified a tolerance of \pm (0.03d \pm 0.3) shall be taken on all dimensions 'd' being the dimension in mm for porcelain & \pm 3.0 for casting

Modern monogram, India, month, year & Part No. _____ to be marked at:-X



PANTO MOUNTING

S.No.	DESCRIPTION	MATERIAL	REF.DRG.No.	QTY.	REMARKS	
					Scale	Matl
6	Hex. Head Screw	M.S.	H - 9 - 0174	1	Hot Dip Galvanized	
5	Locking Plate	M.S.	H - 9 - 0174	1	Hot Dip Galvanized	
4	Cushion	Cork		2		
3	Bottom Flange	SGI	SGI-4-024	1	Hot Dip Galvanized	
2	Insulator shell	Porcelain	411-C-065/F	1	Brown Glazed	
1	Top Cap	SGI	SGI-4-023	1	Hot Dip Galvanized	
Title						
Ref.						
All dimensions are in mm.						
MODERN INSULATORS LIMITED						
ABU ROAD						
411 - C - 065						
0						

APPROVED BY
PROVISIONALY APPROVED
29/11/19