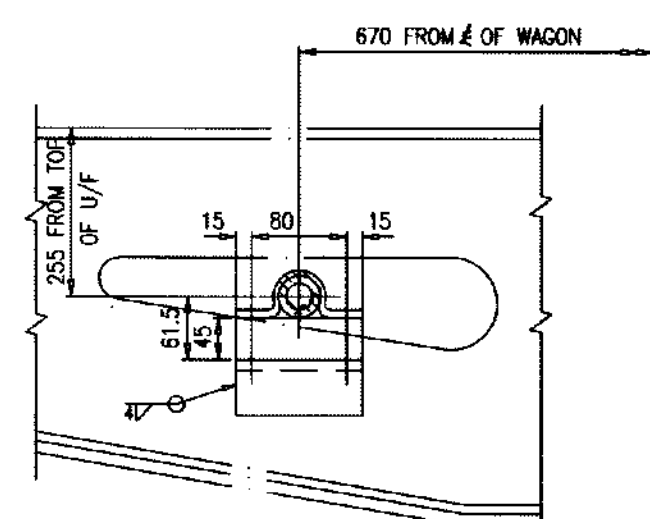
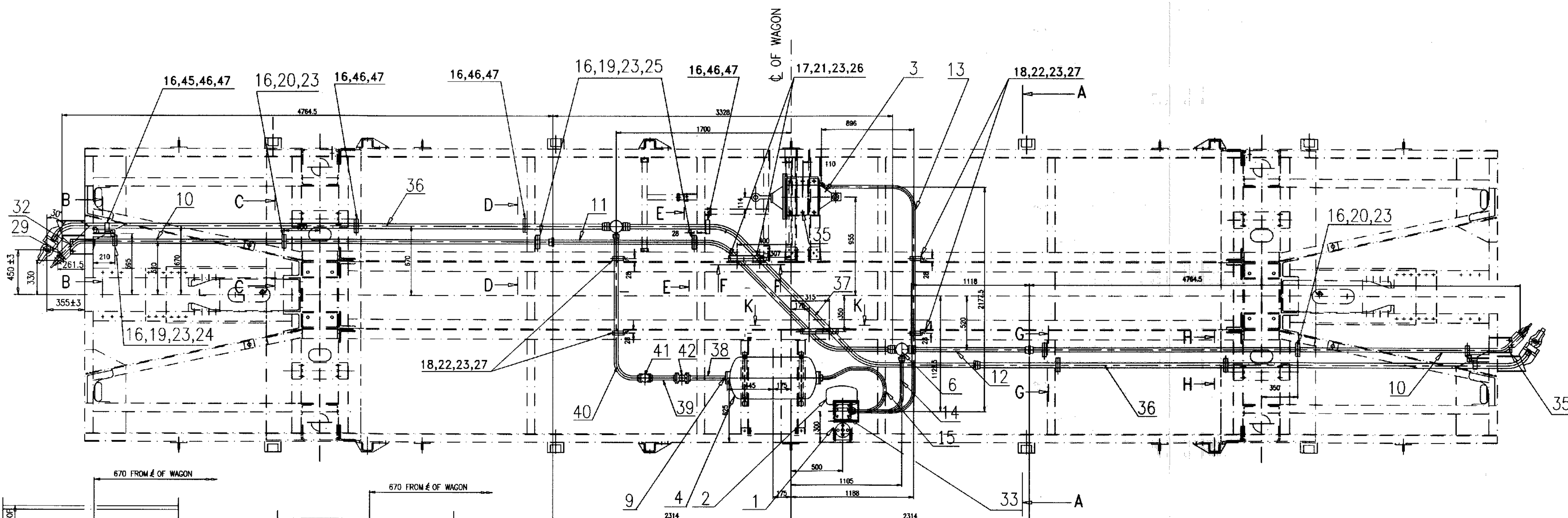
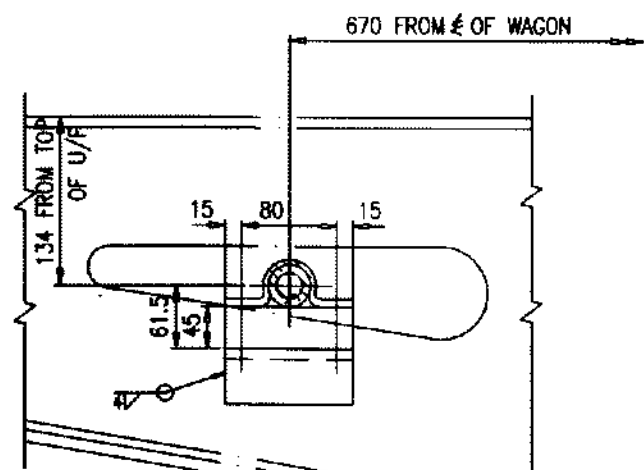


# NOTE:-

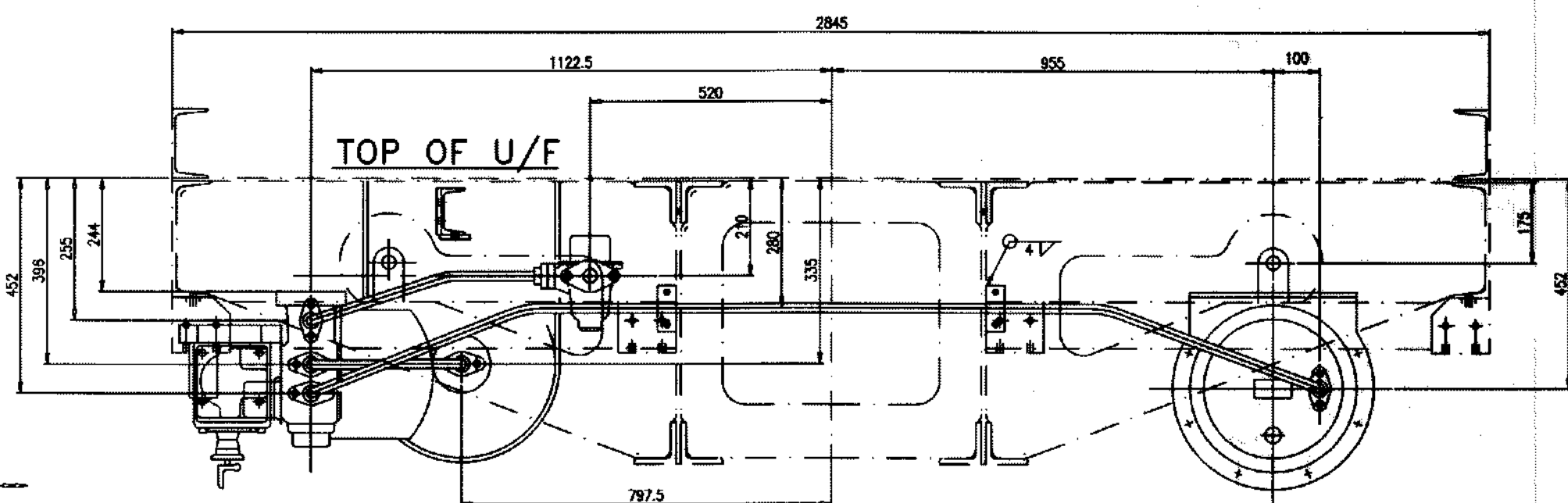
1. THE FITMENT OF AIR BRAKE EQUIPMENT SHOULD BE TRIED FIRST ON PATTERN WAGON. THE LENGTH, ANGLE & PROFILE OF PIPE, LOCATION OF CLAMPS AND BRACKETS TO BE VERIFIED ON FIRST PATTERN/PROTOTYPE WAGON. ANY ALTERATIONS/CHANGES REQUIRED DURING ACTUAL FITMENT SHALL BE ADVISED TO RDSO/LKO FOR REVIEW & INCORPORATE THE CHANGES IN DRAWINGS.
2. ANY ALTERATIONS ARISING OUT OF PARA 1 SHALL BE VERIFIED BY RDSO/INSPECTING AUTHORITY ALL RESULTS INTIMATED TO RDSO/LKO.
3. THIS DRAWING STRICTLY CONFORMS TO LATEST AIR BRAKE SPECIFICATION 02-ABR & 04-ABR WITH LATEST AMENDMENT.
4. PORTION OF FIXED FLANGES HOLES ARE AT 3 O'CLOCK TO 9 O'CLOCK.
5. ALL CLAMPS, NUTS TO BE WELDED TO BOLTS.
6. BOLTS, NUTS AND SPRING WASHER IN FLANGED ENDS OF THE PIPES TO BE SUPPLIED BY THE AIR BRAKE SUPPLIER.
7. MATERIAL :- WOOD-BASED RESIN IMPREGNATED COMPRESSED LAMINATES.



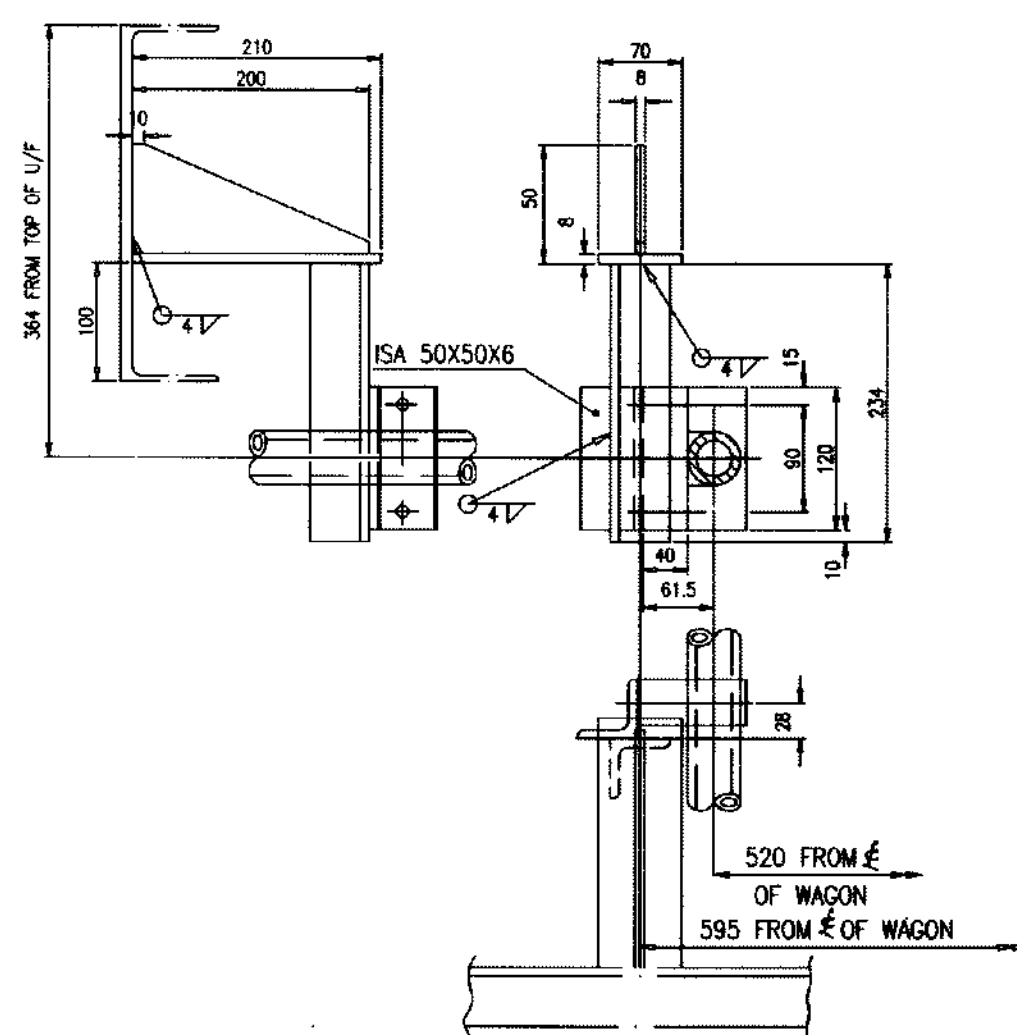
SECTION-GG



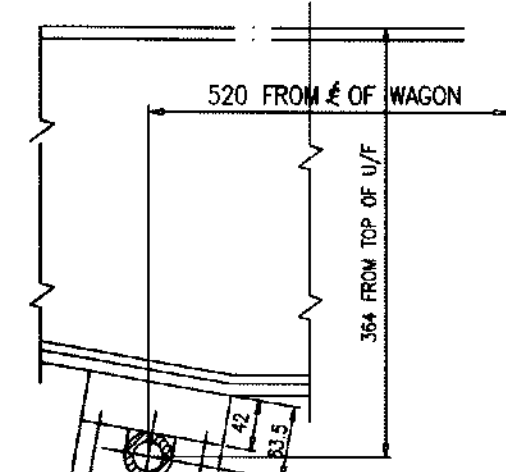
SECTION-HH



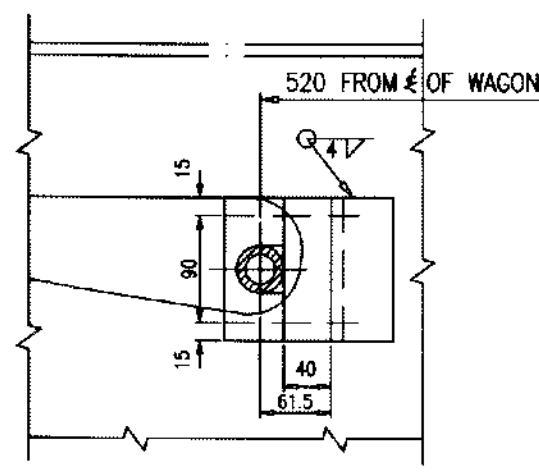
SECTION-AA



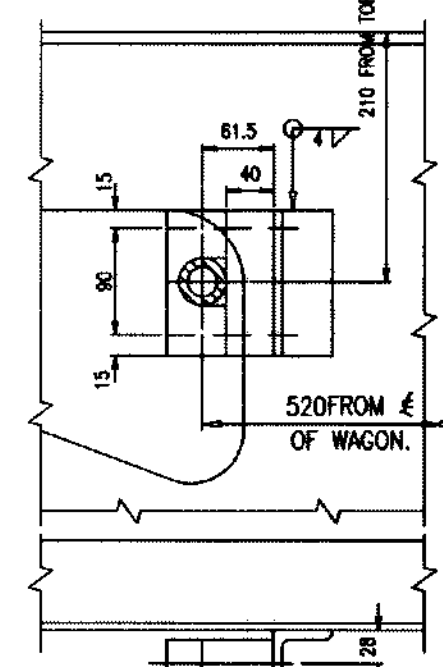
SECTION-BB



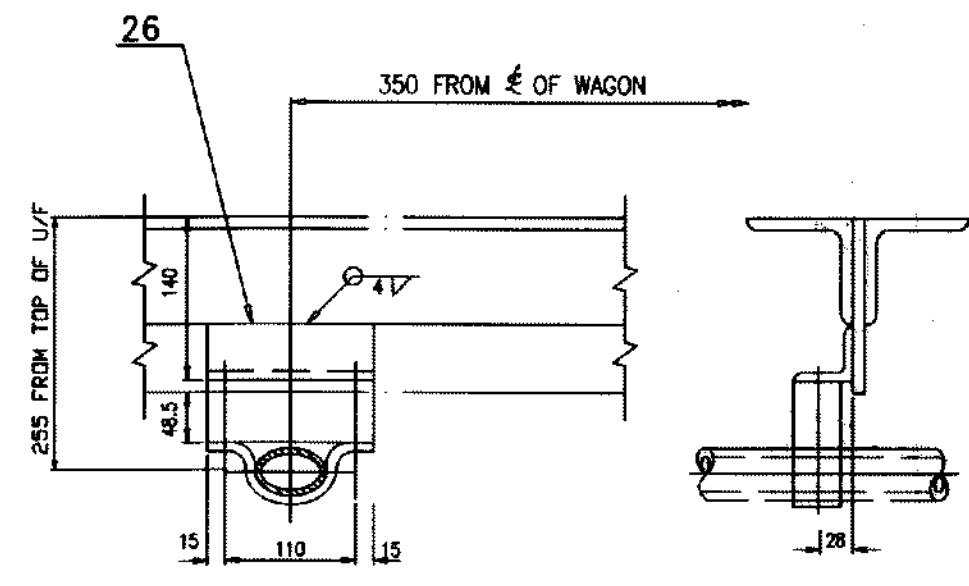
SECTION-CC



SECTION-DD



SECTION-EE



SECTION-KK

ITEM	DESCRIPTION & DIMENSIONS	NO. OFF	REF. DRG.	WT. OF ONE(Kg)	MTL. & SPEC	REMARKS
47	PACKING 120X40X42	7			SEE NOTE 7	
46	BOLT M12X40 LONG WITH NUT AND SPRING WASHER	14		61.363A 61.383		
45	BRACKET	2		61.383A R 48 DIM		
44	AIR BRAKE HOSE COUPLING FOR FEED PIPE	2	WD-81027-S-01 ITEM-5			
43	BRACKET SUPPORTING PLATE (TP)	2	WD-04004-S-43 ITEM-16			
42	CHECK VALVE	1	SK-98112			
41	ISOLATING COCK	1	SK-97002			
40	PIPE 20 NB	1	WD-04004-S-42 ITEM-18			
39	PIPE 20 NB	1	WD-04004-S-42 ITEM-17			
38	PIPE 20 NB	1	WD-04004-S-42 ITEM-16			
37	PIPE 32 NB	1	WD-04004-S-42 ITEM-15			
36	PIPE 32 NB	2	WD-04004-S-42 ITEM-14			

35	BRACKET SUPPORTING PLATE	2	WD-04004-S-43 ITEM-3			
34	BOLT M12X70 LONG WITH NUT AND SPRING WASHER	6		61.383A 61.383		
33	BOLT M12X70 LONG WITH NUT AND SPRING WASHER	4				
32	BOLT M12X40 LONG WITH NUT AND SPRING WASHER	4				
31	COUPLING SUPPORT	4	SK-73552(WOOD)			
30	APD/FOR CUT OFF ANGLE COCK	4	WD-04004-S-43 ITEM-7			
29	LOCKING BRACKET	4	WD-04004-S-43 ITEM-4			
28	AUXILIARY RESERVOIR SUSPENSION STRAP	2	WD-04004-S-43 ITEM-1			
27	ANGLE 50 50X5X100	4		61.383A 61.383		
26	ANGLE 50 50X5X140 LONG	2				
25	ANGLE 50 50X5X120 LONG	3				
24	BRACKET	2				
23	BOLT M12X120 LONG WITH NUT AND SPRING WASHER	26		61.383A 61.383		
22	PACKING 100X40X40	4			SEE NOTE 7	
21	PACKING 140X40X48.5	2				
20	PACKING 120X40X42	2				
19	PACKING 120X40X40	5				
18	CLAMP FOR PIPE 20 NB	4	WD-04004-S-01 ITEM-1			
17	CLAMP FOR PIPE 32 NB	2	WD-04004-S-01 ITEM-4			
16	CLAMP FOR PIPE 32 NB	14	WD-04004-S-01 ITEM-3			
15	PIPE 20 NB	1	WD-04004-S-42 ITEM-5			AIR BRAKE MANUFACTURER SUPPLY
14	PIPE 20 NB	1	WD-04004-S-42 ITEM-6			
13	PIPE 20 NB	1	WD-04004-S-42 ITEM-2			
12	PIPE 32 NB	1	WD-04004-S-42 ITEM-2			
11	PIPE 32 NB	1	WD-04004-S-42 ITEM-3			
10	PIPE 32 NB	2	WD-04004-S-42 ITEM-1			
9	BLANKING FLANGE WITH GASKET	1	WD-82032-S-01			
8	LOCK NUT R <sub>1/4</sub>	2		61.348B		
7	AIR BRAKE HOSE COUPLING FOR BRAKE PIPE	2	SK-72547			
6	DIRT COLLECTOR	2	WD-82051-S-01			
5	CUT-OFF ANGLE COCK	4	WD-88123-S-01			
4	AUXILIARY RESERVOIR 100 LIT.	1	WD-82051-S-01			
3	BRAKE CYLINDER 355mm	1	WD-82051-S-01			
2	PIPE BRACKET WITH CONTROL RESERVOIR	1	WD-7951-S-7/0			
1	DISTRIBUTOR VALVE	1				

PRELIMINARY SKETCH

ONLY FOR PROTOTYPE APPLICATION UNDER GUIDANCE OF R.D.S.O. (WAGON)

BOGIE RAIL WAGON TYPE 'BRHNEHS'

DATE: 03/04

CHECKED: [Signature]

DRAWN: [Signature]

TRACED: [Signature]

COPIED: [Signature]

J.S.NO. WD-04004

B.G. R.D.S.O. [W] GROUP WD-04004-S-61

ITEM	ITEM	AUTHY.	DESCRIPTION	DATE	ASSLY. DRGS.
③	-	WD-17078	REVISED	12/17	
②	-	WD-07025	REVISED	04/07	
①	-	WD-06016	REVISED	03/06	