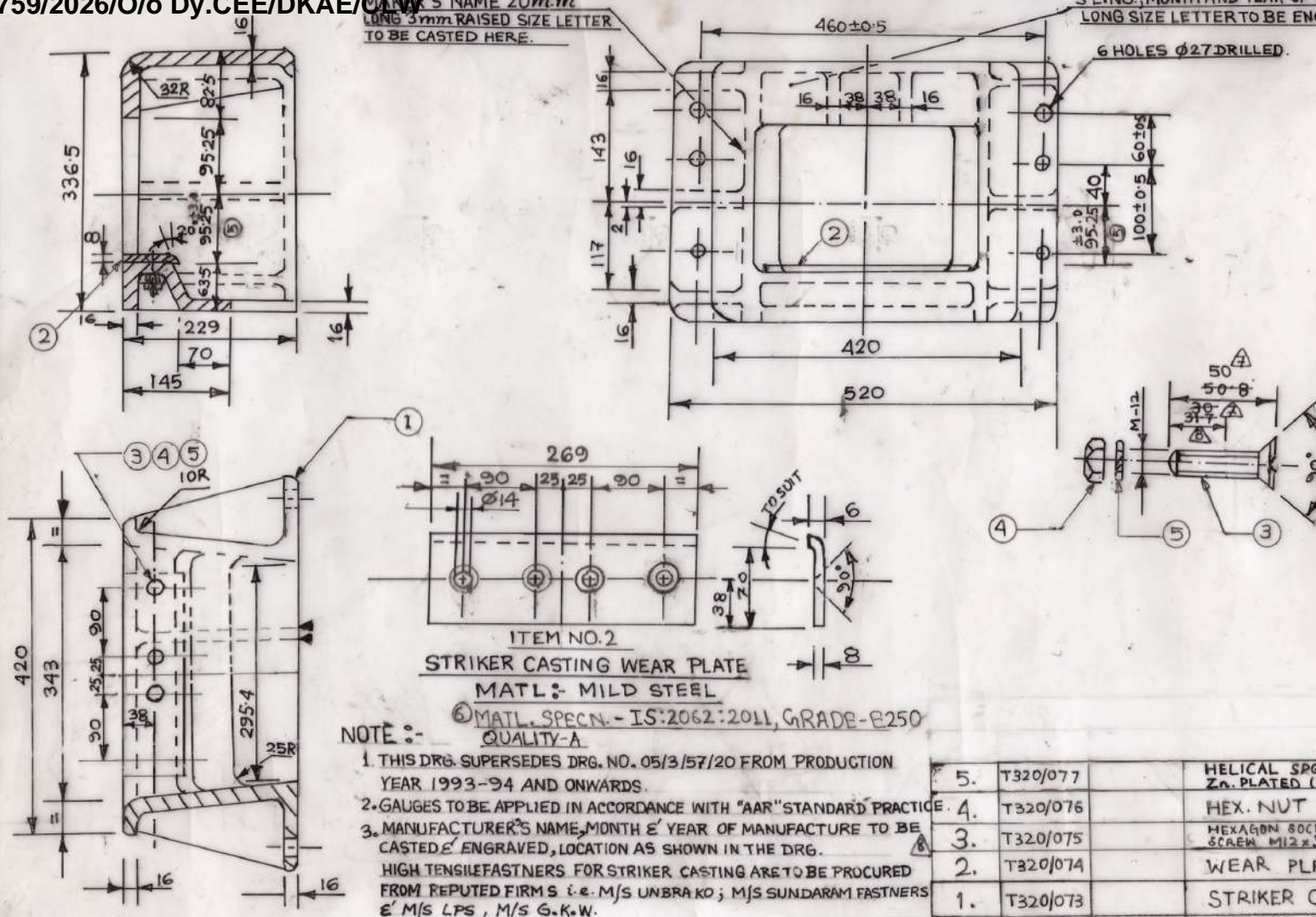


LONG 3mm RAISED SIZE LETTER
TO BE CASTED HERE.S.L.NO., MONTH AND YEAR OF MFG. OF 10mm
LONG SIZE LETTER TO BE ENGRAVED HERE.

6 HOLES Ø27 DRILLED.

T320/035	B320/002
C & D NO. FOR WAG-9	C & D NO. FOR WAP-5



ITEM NO.2
STRIKER CASTING WEAR PLATE
MATL:- MILD STEEL

NOTE :-
⑥ MATL. SPECN. - IS:2062:2011, GRADE-B250
QUALITY-A

- THIS DRG. SUPERSEDES DRG. NO. 05/3/57/20 FROM PRODUCTION YEAR 1993-94 AND ONWARDS.
 - Gauges to be applied in accordance with "AAR" STANDARD PRACTICE.
 - MANUFACTURER'S NAME, MONTH & YEAR OF MANUFACTURE TO BE CASTED & ENGRAVED, LOCATION AS SHOWN IN THE DRG.
- HIGH TENSILE FASTNERS FOR STRIKER CASTING ARE TO BE PROCURED FROM REPUTED FIRMS i.e. M/S UNBRAKO; M/S SUNDARAM FASTNERS & M/S LPS, M/S G.K.W.

5.	T320/077	HELICAL SPG. WASHER M12 Zn. PLATED (PASSIVATED)	8	SPG. STEEL	IS: 3063 TYPE B		
4.	T320/076	HEX. NUT M12- Zn. PLATED (PASSIVATED)	8	STEEL	IS: 1364-98 GR. 10.9		
3.	T320/075	HEXAGON SOCKET CSK HEAD SCREW M12x50 LG. FULL THREADED	8	STEEL	DIN 934 GR. 10.9		
2.	T320/074	WEAR PLATE	2	MILD STEEL	IS: 2062 GR. B250		
1.	T320/073	STRIKER CASTING	2	CAST STEEL	IS: 1030 GR. 230-520H		
A	T320/035	F316/087	STRIKER CASTING ASSLY.	2	P316/ 036		
ITEM NO.	C&D NO. WAG-9HC	C&D NO. WAG-5	वर्णन DESCRIPTION	संख्या/ लि. ई. नं. NO/100	पदार्थ MATL	विशिष्ट SPECN	C&D WAG-7

THIS DRG. SUPERSEDES DRG. NO. 05/3/57/31 ALT-3

RETRACED

धातु वेल्डिंग प्रतीक भा. मा. - 813 के अनुसार WELDING SYMBOLS TO IS: 813

⑧	DY.CEE D-III	DIMENSION 30 OF ITEM NO 3 IS DELETED. DESCRIPTION OF ITEM 3 CHANGED	24/7/23
⑦	DY.CEE/ D/CONV.	DIMN. 50 & 30 WAS 50-8 & 31.7 RESP. PARAMETERS ARE ADDED TO ITEM 445 AT BOM.	13/4/23
⑥	DY.CEE/ D/CONV.	DESCRIPTION OF DRG. IS CHANGED- BOM IS GENERATED MATERIAL SPECIFICATION IS ADDED TO WEAR PLATE.	24/7/23
⑤	DY.CEE/ D/CONV.	TOLERANCE ±3.0 ADDED WITH DIMN. 95.25	24/7/23
④	DY.CEE/DI	GR. OF MATL. SPECN. 280-520 WAS 27-54.	24/7/23
परिवर्तन संख्या ALT.NO.	प्राधिकार AUTHY	वर्णन DESCRIPTION	दिनांक आदेश DATED INITIAL

सतह-रूखता का मान भा. मा. 3073 के अनुसार SURFACE ROUGHNESS VALUE TO IS: 3073	पदार्थ GRADE NUMBER	सं१	सं२	सं३	सं४	सं५	सं६	सं७	सं८	सं९	सं१०	सं११	सं१२
Ra/μm	सं१	सं२	सं३	सं४	सं५	सं६	सं७	सं८	सं९	सं१०	सं११	सं१२	सं१३
0.025	0.05	0.1	0.2	0.4	0.8	1.6	3.2	6.3	12.5	25	50	100	200
चिह्न	SYMBOL												

आरेखित DRAWN	Sd/-	आरेखण संदर्भ REF. ASSLY. DRG. NO.	06/1/57/6 REF.-29	चित्ररजन रेल इंजन कारखाना CHITTARANJAN LOCOMOTIVE WORKS	प्रयोग में WAP-1E3, WCG 3 USED FOR WAG-15, WAG-7, WAP-4 LOCOS - WAG-9, WAP-5, WCMG
जाँचा CHECKED	Sd/-	वर्णन DESCRIPTION	06/1/57/6 REF.-29	चित्ररजन रेल इंजन कारखाना CHITTARANJAN LOCOMOTIVE WORKS	प्रयोग में WAP-1E3, WCG 3 USED FOR WAG-15, WAG-7, WAP-4 LOCOS - WAG-9, WAP-5, WCMG
अनुमोदित APPROVED	Sd/-	वर्णन DESCRIPTION	06/1/57/6 REF.-29	चित्ररजन रेल इंजन कारखाना CHITTARANJAN LOCOMOTIVE WORKS	प्रयोग में WAP-1E3, WCG 3 USED FOR WAG-15, WAG-7, WAP-4 LOCOS - WAG-9, WAP-5, WCMG
मंजूर SCALE	N.T.S.	वर्णन DESCRIPTION	06/1/57/6 REF.-29	चित्ररजन रेल इंजन कारखाना CHITTARANJAN LOCOMOTIVE WORKS	प्रयोग में WAP-1E3, WCG 3 USED FOR WAG-15, WAG-7, WAP-4 LOCOS - WAG-9, WAP-5, WCMG
अनुमोदित संदर्भ APPROVAL REF		वर्णन DESCRIPTION	06/1/57/6 REF.-29	चित्ररजन रेल इंजन कारखाना CHITTARANJAN LOCOMOTIVE WORKS	प्रयोग में WAP-1E3, WCG 3 USED FOR WAG-15, WAG-7, WAP-4 LOCOS - WAG-9, WAP-5, WCMG

MODIFIED
STRIKER CASTING
ASSEMBLY

आरेखण संख्या
DRAWING NO.
05/3/57/31