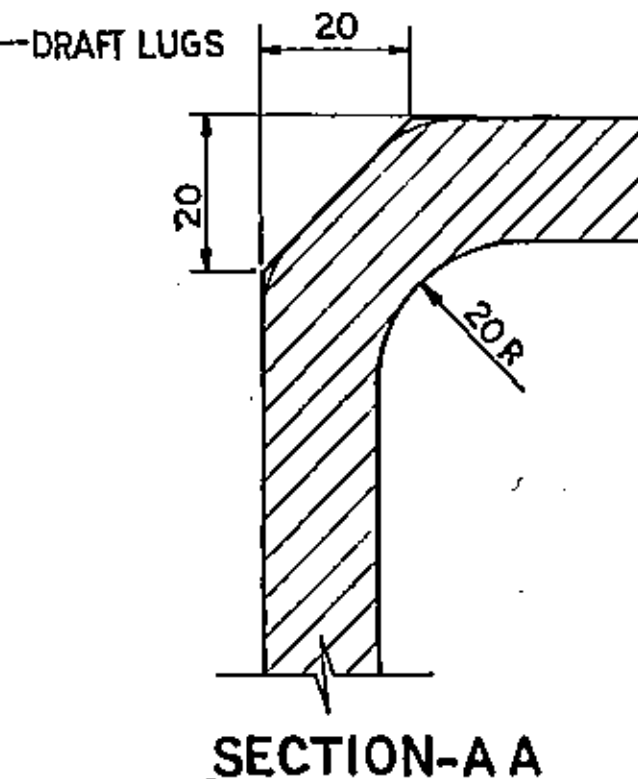


1. MOUTH OPENING GAUGE.
2. FLANGE THICKNESS 'GO' & 'NO GO' GAUGE.
3. FRONT OPENING WITH WEAR PLATE 'GO' & 'NO GO' GAUGE.
4. RIB THICKNESS GAUGE,
5. REAR LUGS LENGTH HEIGHT & SQUARENESS GAUGE.
6. REAR LUGS OUT SIDE WIDTH GAUGE.

- 1 STRIKER CASTING SHALL BE SUPPLIED IN UNDRILLED CONDITION DRILLING SHALL BE DONE BY WAGON BUILDERS.
- 2 LUG FACES MUST BE IN PLANE WITHIN 1.5 mm.
- 3 SURFACES MARKED ⊗ MUST BE FLAT WITHIN 1.2 mm WHEN CHECKED ON A SURFACE PLATE AND PARALLEL OR AT RIGHT ANGLE WITHIN 0° 30'.
- 4 STRIKER CASTING WEAR PLATE TO DRG. NO. WD-87056-S/1 MUST BE CENTRALLY LOCATED.



SECTION-A A

A	BOLT WITH NUT & SPRG WASHER M 12 X 250 LON	3
WO- JCS 5/1	STRIKER CASTING W/HAIR PLATE	1
W/DD 436	STRIKER CASTING	1
PART	DESCRIPTION	NO. OFF
FOR A&P TYPE TRANSFER		
CENTRE BUFFER COUPLER OF		
BROAD GAUGE BOGIE WAGON		

CORRES RLY. NO
WA/BD-4461
I. R. PART NO.

		MTL.	CST STEEL Gr 27-54
		SPEC.NO.	IS. 1030
SIZE		TREAT	
FORM		WEIGHT	117.3 Kg WITHOUT REAR PLATE
RLYPATT.		SCALE	DO NOT SCALE
RAILWAYS CONCERNED TO TPL.		REF DRG	SK. 62725

QTS	ASTM	DESCRIPTION
		STRIKER CASTING (WITH WEAR PLATE)

1005/253 - 6/95