

I/361935/2026

उत्तर पश्चिम रेलवे
NORTH WESTERN RAILWAY

HQ Office, Jaipur
Tel. No. 095-25512 (Rly.)

L. No. NWR/HQ/M/WS/DRG/1/C

Dt.: 30.01.2026

Chief Workshop Manager
Ajmer & Jodhpur

Sub.: RCF's CAI No. CAI/RCF/MECH/LHB/031 for "Reverse mounting ARRGT of cabin-8 saloon sliding door for LWFAC coach".

Ref.: RCF's letter No. MD21561 dt. 24.08.2023.

Vide letter under reference, RCF has issued Coach Alteration Instruction No. CAI/RCF/MECH/LHB/031 for "Reverse mounting ARRGT of cabin-8 saloon sliding door for LWFAC coach".

The RCF's letter copy is enclosed for kind information and necessary action.

DA: As above.

Digitally Signed by Subhash
(Subhash Chandra)
Dy. CME (WS)
Date: 30-01-2026 17:20:59
Reason: Approved
for CWE

RAIL COACH FACTORY, KAPURTHALA
(Coach Alteration Instruction)

CAI/RCF/MECH/LHB/031

MD21561

Dated: 24/08/2023

- 1. Description** : Reverse mounting ARRGT of cabin-8 saloon sliding door for LWFAC coach.
- 2. Drawing No.** : Drg.no.LA56106 Alt "g" of mounting ARRGT of only cabin-8 saloon sliding door for LWFAC coaches shall be replaced with drg.no. MI007760 alt-'a' of reverse opening type saloon sliding cabin door.
- 3. Alteration** : Existing door of cabin-8 may be used as a spare part for other saloon sliding cabin doors and new door as per drawing no. MI007760 should be fitted as points mentioned below, i.e. at S.No.7 with special instructions.
- 4. Reason for Alteration:** To avoid infringement of compartment door with saloon sliding door.
- 5. Coach type affected** : RCF built LHB FAC type Coaches fitted with hinge/pivot compartment doors.
- 6. To be carried out** : As soon as possible.
- 7. Special instructions:**
 - a) Open the doorway ceiling in front of the cabin-8 saloon sliding door move mechanism.
 - b) Remove the door leaf to drg no. LD56250.
 - c) Remove the door move mechanism to drg no. LD56138.
 - d) Remove item-2, 10, 11, 14, and 15 of LA10161 and mount the same items according to DRG no. MI007750 (door rabbet and sealing Arrangement).
 - e) Mount item-2, 10, 11, 14, and 15 of MI007750.
 - f) Mount the door move mechanism to drg MI007743.
 - g) Mount the door leaf to drg no. MI007752.
 - h) Close the doorway ceiling after replacing the sliding door.

ABHEY PRIYA
DOGRA

Digitally signed by ABHEY PRIYA
DOGRA
Date: 2023.08.24 13:17:01 +05'30'

For General Manager(Mech)

Encls:(15drgs)
LA56106 Alt-'g'
MI007750 Alt-'a'
MI007752 Alt-'Nil'
MI007754 Alt-'Nil'
MI007756 Alt-'Nil'
MI007758 Alt-'Nil'

MI007743 Alt-'Nil'
MI007751 Alt-'Nil'
MI007753 Alt-'a'
MI007755 Alt-'Nil'
MI007757 Alt-'Nil'
MI007759 Alt-'Nil'

All Principal Chief Mechanical Engineers:

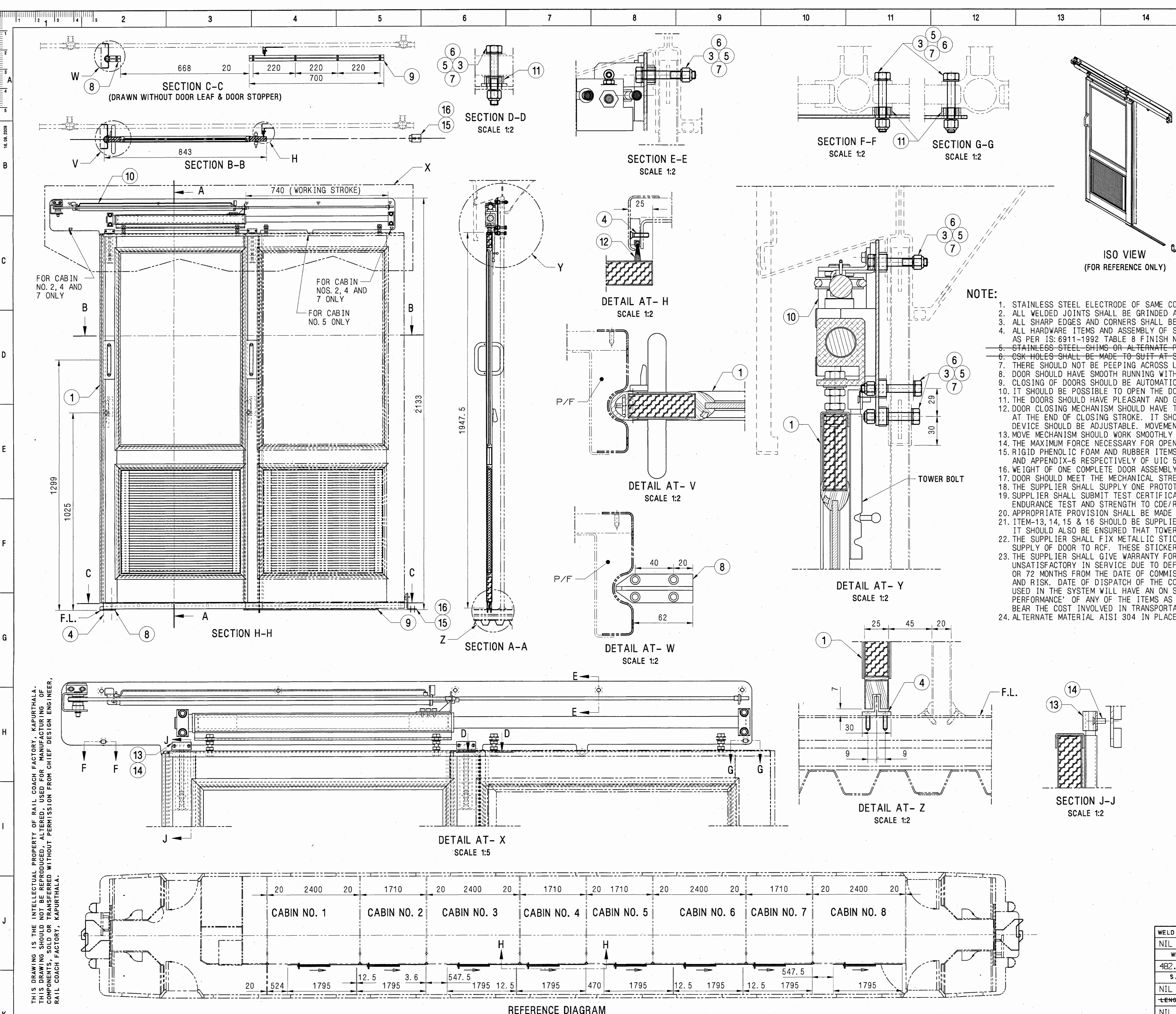
1. Central Railway, Mumbai CST-400 001
2. W. Railway Churchgate, Mumbai - 400 020
3. Northern Railway, Baroda House, New Delhi- 110 001
4. N.E. Railway Gorakhpur. Gorakhpur-273 001
5. N.F. Railway Maligaon, Guwahati- 781 011
6. S. Railway, Park Town, Chennai- 600 003
7. S. C. Railway, Rail Nilayam, Secunderabad- 500 371
8. S. E. Railway, Garden Reach, Kolkata-700 043
9. Eastern Railway, Fairlie Place, Kolkata-700 001
10. E. Coast. Railway, Bhubhaneswar- 751 016
11. North Central Railway, Allahabad — 211 001
12. North West Railway, Jaipur — 302 001
13. S. E. Central Railway, Bilaspur- 495 004
14. S. W. Railway, Hubli 580 023
15. West Central Railway, Jabalpur- 482 001
16. East Central Railway, Hazipur- 844 101
17. ICF, Chennai
18. MCF, Rae Bareli

All Chief Works Engineer:

1. Central Railway, Matunga, Mumbai- 400 019
2. Bhopal, West Central Railway Nishatpura, MP-462 001
3. Lilluah, Eastern Railway, Howrah- 711 204
4. Alambagh, Northern Railway, Lucknow- 226 005
5. Jagadhari, Northern Railway,- 135 003
6. Gorakhpur N. E. Railway- 273 001
7. New Bongaigaon N. East Frontier Railway- 83 381 8, Perambur, Southern Railway, Chennai- 600 023
8. Golden Rock, Southern Railway, Trichy- 620 004
9. Ashokpuram, Southern Railway, Mysore South- 570 008
10. Lallagudda, S. C. Railway Secunderabad- 500 017
11. Hubli, South Western Railway- 580 020
12. Tirupati, S. C. Railway - 517 506
13. Mancheswar, East Coast Railway, Bhubhaneswar- 751 017
14. Kharagpur, S. E. Railway- 721 301
15. Lower Parel, N.M.Joshi Marg, Western Railway, Mumbai- 400 013
16. Western Railway, Ajmer, Rajasthan
17. North East Frontier Railway, Dibrugarh, Assam-786 001

Copy to:

1. DG/Carriage, RDSO, Manak Nagar, Lucknow- 226 011
2. EDME (Coaching), Railway Board, New Delhi-110 001
3. EDME (W), (Coaching), Railway Board New Delhi-110 001



ALT. NO	ALT. DATE	ZONE	ALTERATIONS	AUTHORITY
d	22/09/2014	E12 H15	1. NOTE-15 REVISED. 2. DESCRIPTION OF ITEM-13 WAS ANGLE FOR TOWER BOLT.	DY CME/D1
e	02/08/2016	G12	1. NOTE- 22 & 23 ADDED.	DIC NO. MD160012
f	09/04/2019	G12	1. NOTE - 23 REVISED.	DY. CME/D11
g	17/01/2020	H15, G15 J15 F12 G12	1. ITEM-15 AND 16 ADDED. 2. SIZE OF ITEM-3 WAS M8X55. 3. NOTE-21 REVISED. 4. NOTE-24 ADDED.	DIC NO MD190040 & MD170052

- NOTE:
1. STAINLESS STEEL ELECTRODE OF SAME COMPOSITION AS PER TABLE-3 OF RDSO/SPEC. C-K: 201 TO BE USED FOR WELDING.
 2. ALL WELDED JOINTS SHALL BE GRINDED AND BURNS TO BE REMOVED.
 3. ALL SHARP EDGES AND CORNERS SHALL BE ROUNDED OFF.
 4. ALL HARDWARE ITEMS AND ASSEMBLY OF STAINLESS STEEL ITEMS SHALL HAVE DULL SATIN FINISH AS PER IS: 6911-1992 TABLE 8 FINISH NO. 6.
 5. STAINLESS STEEL SHIMS OR ALTERNATE PACKINGS SHALL BE SUPPLIED AS PER THE GIVEN DIMENSIONS.
 6. CSK HOLES SHALL BE MADE TO SUIT AT SITE IN LOWER DOOR GUIDANCES.
 7. THERE SHOULD NOT BE PEEPING ACROSS LOUVERS.
 8. DOOR SHOULD HAVE SMOOTH RUNNING WITHOUT JERKS AND LOW NOISE FUNCTIONING.
 9. CLOSING OF DOORS SHOULD BE AUTOMATIC WITH A SPEED OF 0.1m/sec. (APPROX.)
 10. IT SHOULD BE POSSIBLE TO OPEN THE DOOR DURING CLOSING STROKE ALSO.
 11. THE DOORS SHOULD HAVE PLEASANT AND GOOD LOOKING APPEARANCE MATCHING WITH THE OUTER COLOUR SCHEME OF THE COACH.
 12. DOOR CLOSING MECHANISM SHOULD HAVE TIME DELAY DEVICE TO INCREASE THE CLOSING TIME OF DOORS AT THE END OF CLOSING STROKE. IT SHOULD TAKE 30sec. TO 120sec. BEFORE CLOSING. THE TIME DELAY DEVICE SHOULD BE ADJUSTABLE. MOVEMENT SHOULD BE SLOWER AT END OF CLOSING OF STROKE FOR LAST 200mm (0.05m/sec).
 13. MOVE MECHANISM SHOULD WORK SMOOTHLY FOR 3,50,000 CYCLES.
 14. THE MAXIMUM FORCE NECESSARY FOR OPENING THE DOOR SHALL BE 5 TO 6 Kg.
 15. RIGID PHENOLIC FOAM AND RUBBER ITEMS SHALL BE TESTED FOR FIRE RETARDANCE AS PER CLASS-B OF APPENDIX-8 AND APPENDIX-6 RESPECTIVELY OF UIC 564-2 OR. THE FIRM SHOULD SUBMIT TEST REPORTS FROM A NABL/REPUTED LABORATORY.
 16. WEIGHT OF ONE COMPLETE DOOR ASSEMBLY MUST NOT EXCEED 60Kg.
 17. DOOR SHOULD MEET THE MECHANICAL STRENGTH REQUIREMENTS AS PER UIC 566.
 18. THE SUPPLIER SHALL SUPPLY ONE PROTOTYPE OF DOOR FOR APPROVAL BY CDE/RCF BEFORE COMMENCING BULK SUPPLY.
 19. SUPPLIER SHALL SUBMIT TEST CERTIFICATES FOR MATERIAL, FIRE CHARACTERISTICS, ENDURANCE TEST AND STRENGTH TO CDE/RCF ALONG WITH PROTOTYPE OF DOOR.
 20. APPROPRIATE PROVISION SHALL BE MADE TO ENSURE SMOOTH OPERATION OF MIDDLE LOCK IN CLOSED POSITION. IT SHOULD ALSO BE ENSURED THAT TOWER BOLT IS LOCKING THE DOOR PROPERLY (BOTH IN OPEN AND CLOSED POSITION).
 21. ITEM-13, 14, 15 & 16 SHOULD BE SUPPLIED LOOSE AND IT SHOULD BE FITTED AFTER FITTING THE DOOR IN COACH.
 22. THE SUPPLIER SHALL FIX METALLIC STICKERS ON EACH DOOR MENTIONING NAME OF THE SUPPLIER AND MONTH OF SUPPLY OF DOOR TO RCF. THESE STICKERS SHALL NOT BE VISIBLE TO THE PASSENGERS EASILY.
 23. THE SUPPLIER SHALL GIVE WARRANTY FOR THE COMPLETE DOOR SYSTEM INCLUDING INDIVIDUAL PARTS AGAINST FAILING OR PROVING UNSATISFACTORY IN SERVICE DUE TO DEFECTIVE DESIGN, MATERIAL OR WORKMANSHIP WITHIN 84 MONTHS FROM THE DATE OF SUPPLY OR 72 MONTHS FROM THE DATE OF COMMISSIONING OF COACH, WHICHEVER IS EARLIER AND SHALL REPLACE THE SAME AT HIS OWN COST AND RISK. DATE OF DISPATCH OF THE COACH FROM RCF SHALL BE TAKEN AS THE DATE OF COMMISSIONING OF THE COACH. HOWEVER ITEMS USED IN THE SYSTEM WILL HAVE AN ON SITE WARRANTY OF 72 MONTHS AGAINST CORROSION. IN THE EVENT OF 'NON-SATISFACTORY PERFORMANCE' OF ANY OF THE ITEMS AS INDICATED ABOVE, SUPPLIER WILL HAVE TO REPLACE THE SAME AT HIS OWN EXPENSE AND ALSO BEAR THE COST INVOLVED IN TRANSPORTATION, HANDLING AND REPLACEMENT OF EACH ITEM.
 24. ALTERNATE MATERIAL AISI 304 IN PLACE OF C-K201 CrNi1810 (304) MAY BE USED FOR COMPONENTS IN THIS ASSLY DRAWING.

16	STAINLESS STEEL SLOTTED PAN HD TAPP SCREW ST4.8X32-C (A2-70 TO IS4367 PT.14-84)	16	NIL	IS: 7173-1989, IS 0-1481	NIL
15	DOOR STOP	8	CC63384	NIL	NIL
14	STAINLESS STEEL SLOTTED CSK HD TAPP SCREW ST4.2X13-C (A2-70 TO IS4367 PT.14-84)	4	NIL	IS: 7170-1989, ISO-1482	NIL
13	SOCKET FOR TOWER BOLT	2	LA56144	NIL	NIL
12	SEALING BRUSH	16	3 10113.0, 21.500.119	NIL	NIL
11	SHIM	80	LD56146	NIL	NIL
10	MOVE MECHANISM COMPLETE	8	LD56138	NIL	NIL
9	GUIDE RAIL MAIN	8	LD56144	NIL	NIL
8	GUIDE RAIL SIDE	8	LD56143	NIL	NIL
7	SPRING WASHER B8	71	LIHW09	IS: 3063-1994	ITEM-20 CONTING TO MOTIS 057
6	STAINLESS STEEL MACHINE WASHER A8.4 (A2 TO IS1367 PT.14-1984)	100	LIHWSS09	IS: 2016-1967 DIN125	ITEM-5
5	STAINLESS STEEL NYLOC NUT M8 (A2-70 TO IS1367 PT.14)	71	LIHWSS08	IS: 7002-1991 DIN982	ITEM-8
4	STAINLESS STEEL SLOTTED CSK HD TAPP SCREW ST4.2X25-C (A2-70 TO IS4367 PT.14-84)	96	NIL	IS: 7170-1989	NIL
3	STAINLESS STEEL HEX HEAD BOLT M8X45 (A2-70 TO IS1367 PT.14-84)	71	NIL	IS: 1364 PT.1-92 CE	NIL
2	BEARING SHEET	8	LA56107	NIL	NIL
1	DOOR LEAF ASSEMBLY	8	LD56205	NIL	NIL

WELD LENGTH	ITEM	DESCRIPTION & DIMENSIONS	QPASSLY	DETAIL DRG	MATL. & SPEC.	REMARKS
NIL	M	GROUP	INTERIOR DOORS & ACCESSORIES COMPLETE	SUPERSEDES: LA56106 ALT F		
WEIGHT	FILE	1a56106g.prt (3D)				
482.00	KG					
S.AREA						
NIL	M2					
LENGTH/DIA						
NIL	M					
WIDTH/THICK.						
NIL	M					
HEIGHT						
NIL	M					

SCALE

SSE/REC

1:10

CHD

DRN

SATS

REF.DRG.No.

NIL

PL NO.

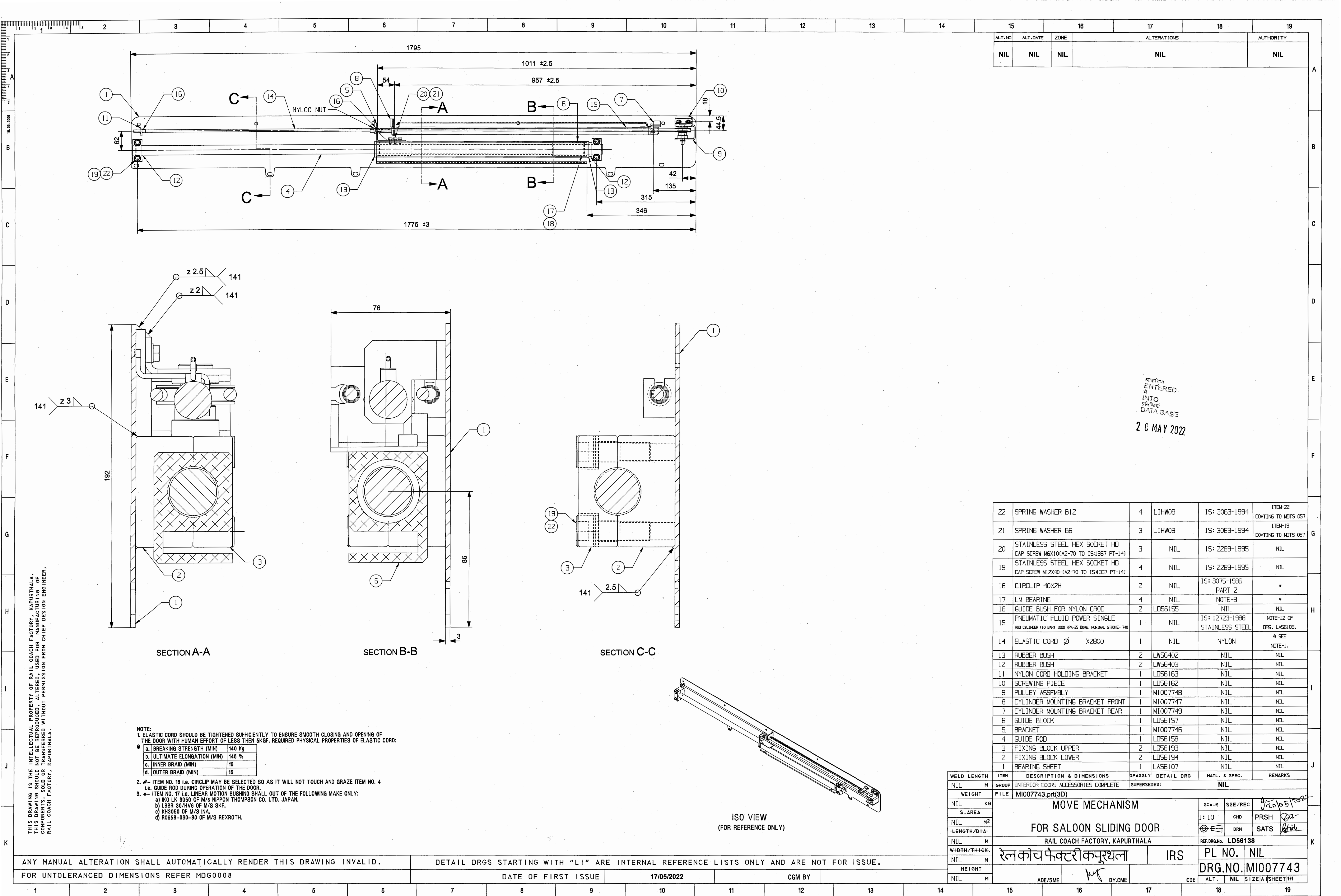
NIL

DRG.NO.

LA56106

SIZE/A1

SHEET/1/1



ALT.NO	ALT.DATE	ZONE	ALTERATIONS	AUTHORITY
NIL	NIL	NIL	NIL	NIL

ENTERED
INTO
DATA BASE
20 MAY 2022

22	SPRING WASHER B12	4	LIHW09	IS: 3063-1994	ITEM-22 COATING TO MTS 057
21	SPRING WASHER B6	3	LIHW09	IS: 3063-1994	ITEM-19 COATING TO MTS 057
20	STAINLESS STEEL HEX SOCKET HD CAP SCREW M6X10(A2-70 TO IS4367 PT-14)	3	NIL	IS: 2269-1995	NIL
19	STAINLESS STEEL HEX SOCKET HD CAP SCREW M12X40(A2-70 TO IS4367 PT-14)	4	NIL	IS: 2269-1995	NIL
18	CIRCLIP 40X2H	2	NIL	IS: 3075-1986 PART 2	*
17	LM BEARING	4	NIL	NOTE-3	*
16	GUIDE BUSH FOR NYLON CORD	2	LD56155	NIL	NIL
15	PNEUMATIC FLUID POWER SINGLE ROD CYLINDER (10 BAR) 1000 RPM-25 BORE, NOMINAL STROKE- 740	1	NIL	IS: 12723-1988 STAINLESS STEEL	NOTE-12 OF DRS. LAS6106.
14	ELASTIC CORD Ø X2800	1	NIL	NYLON	SEE NOTE-1.
13	RUBBER BUSH	2	LWS6402	NIL	NIL
12	RUBBER BUSH	2	LWS6403	NIL	NIL
11	NYLON CORD HOLDING BRACKET	1	LD56163	NIL	NIL
10	SCREWING PIECE	1	LD56162	NIL	NIL
9	PULLEY ASSEMBLY	1	MI007748	NIL	NIL
8	CYLINDER MOUNTING BRACKET FRONT	1	MI007747	NIL	NIL
7	CYLINDER MOUNTING BRACKET REAR	1	MI007749	NIL	NIL
6	GUIDE BLOCK	1	LD56157	NIL	NIL
5	BRACKET	1	MI007746	NIL	NIL
4	GUIDE ROD	1	LD56158	NIL	NIL
3	FIXING BLOCK UPPER	2	LD56193	NIL	NIL
2	FIXING BLOCK LOWER	2	LD56194	NIL	NIL
1	BEARING SHEET	1	LA56107	NIL	NIL

WELD LENGTH	ITEM	DESCRIPTION & DIMENSIONS	GROUP	DETAIL DRG	MATL. & SPEC.	REMARKS
NIL	M	INTERIOR DOORS ACCESSORIES COMPLETE	FILE	SUPERSEDES:	NIL	
WEIGHT	FILE	MI007743.prt(3D)				
NIL	KG					
S.AREA						
NIL	M ²					
LENGTH/B+A						
NIL	M					
WIDTH/THICK.						
NIL	M					
HEIGHT						
NIL	M					
ADE/SME						
DY.CME						
CDE						
ALT.						
NIL						
SIZE/A						
SHEET/1						

NOTE:
1. ELASTIC CORD SHOULD BE TIGHTENED SUFFICIENTLY TO ENSURE SMOOTH CLOSING AND OPENING OF THE DOOR WITH HUMAN EFFORT OF LESS THEN 5KGF. REQUIRED PHYSICAL PROPERTIES OF ELASTIC CORD:

a. BREAKING STRENGTH (MIN)	140 Kg
b. ULTIMATE ELONGATION (MIN)	145 %
c. INNER BRAID (MIN)	16
d. OUTER BRAID (MIN)	16

2. # - ITEM NO. 18 I.e. CIRCLIP MAY BE SELECTED SO AS IT WILL NOT TOUCH AND GRAZE ITEM NO. 4 I.e. GUIDE ROD DURING OPERATION OF THE DOOR.

3. * - ITEM NO. 17 I.e. LINEAR MOTION BUSHING SHALL OUT OF THE FOLLOWING MAKE ONLY:

- a) IKO LK 3050 OF M/S NIPPON THOMPSON CO. LTD. JAPAN,
- b) LBBR 30/HV6 OF M/S SKF,
- c) KH3050 OF M/S INA,
- d) R0658-030-30 OF M/S REXROTH.

THIS DRAWING IS THE INTELLECTUAL PROPERTY OF RAIL COACH FACTORY, KAPURTHALA. THIS DRAWING SHOULD NOT BE REPRODUCED, ALTERED, USED FOR MANUFACTURING OF COMPONENTS OR SUBASSEMBLY OR TRANSFERRED WITHOUT PERMISSION FROM CHIEF DESIGN ENGINEER, RAIL COACH FACTORY, KAPURTHALA.

ANY MANUAL ALTERATION SHALL AUTOMATICALLY RENDER THIS DRAWING INVALID.

DETAIL DRGS STARTING WITH "LI" ARE INTERNAL REFERENCE LISTS ONLY AND ARE NOT FOR ISSUE.

FOR UNTOLERANCED DIMENSIONS REFER MDG0008

DATE OF FIRST ISSUE

17/05/2022

CGM BY

MOVE MECHANISM
FOR SALOON SLIDING DOOR

RAIL COACH FACTORY, KAPURTHALA

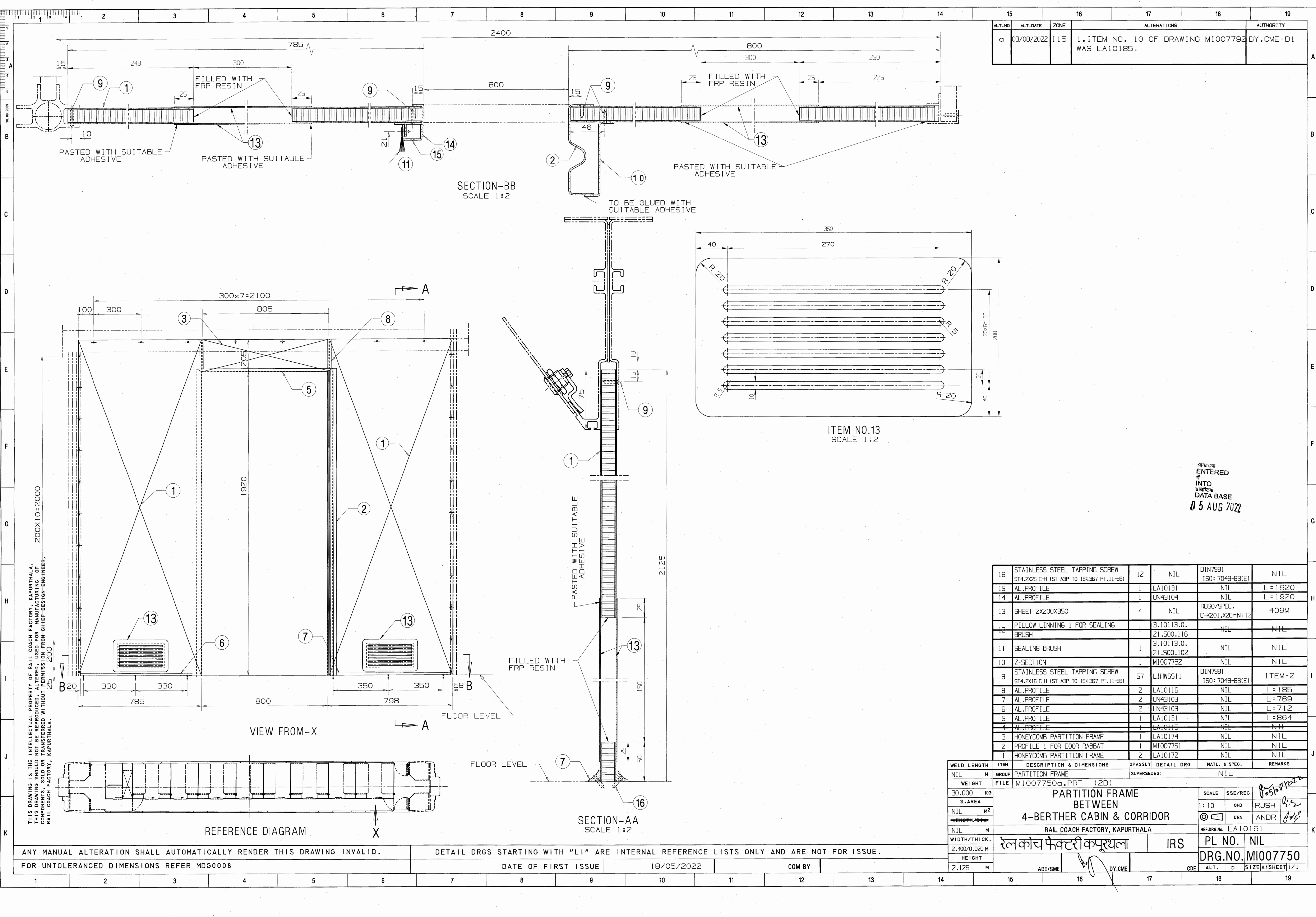
REF.DRG.No. LD56138

रेलकोच फैक्टरी कपूरथला

IRS

PL NO. NIL

DRG.NO. MI007743

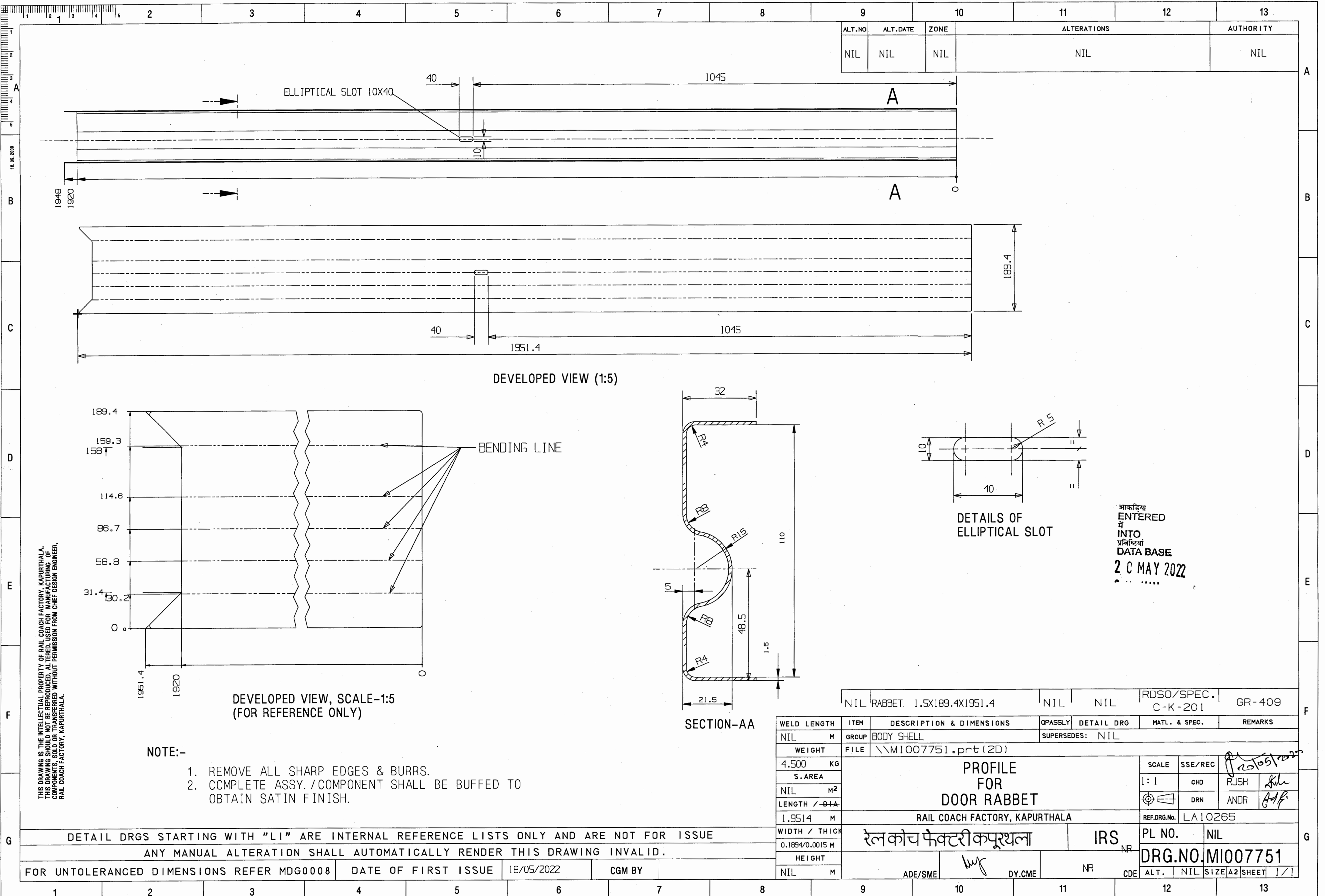


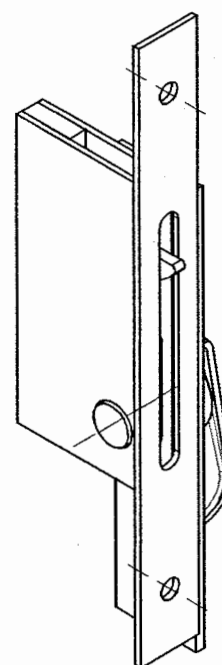
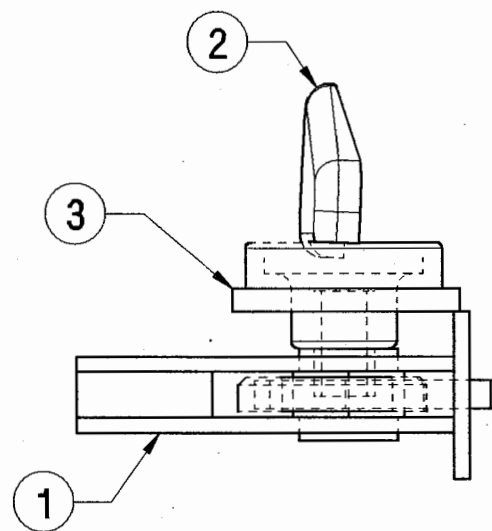
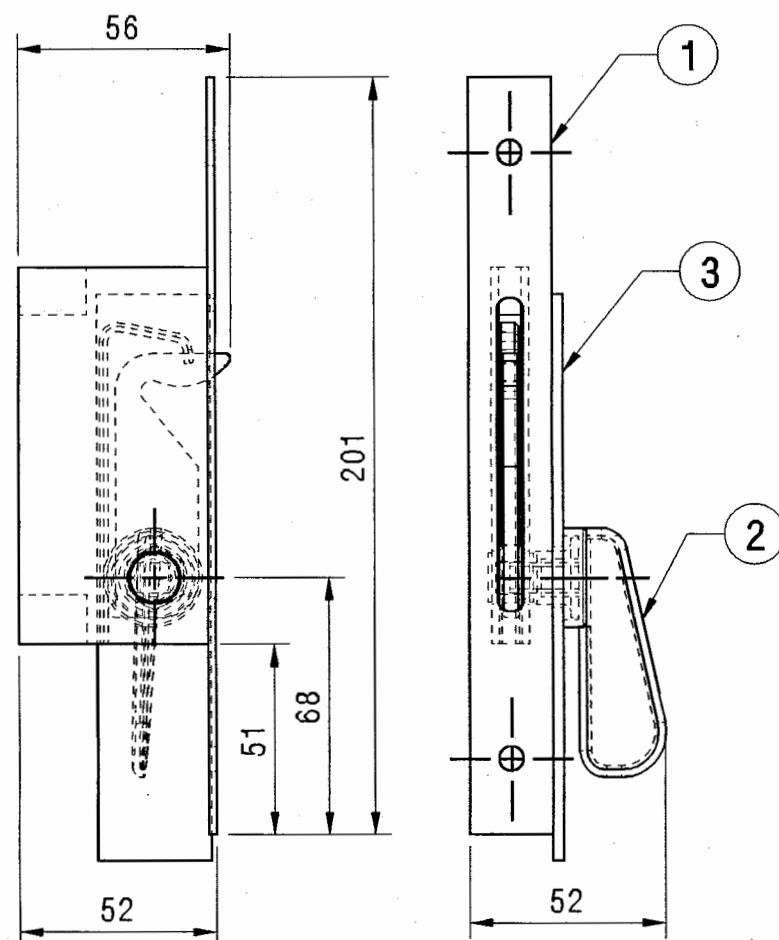
ALT.NO	ALT.DATE	ZONE	ALTERATIONS	AUTHORITY
03/08/2022	115	1. ITEM NO. 10 OF DRAWING M1007792 WAS LA10185.	DY.CME-D1	

16	STAINLESS STEEL TAPPING SCREW ST4.2X25-C-H (ST A3P TO IS4367 PT.11-96)	12	NIL	DIN7981 ISO: 7049-83(E)	NIL
15	AL.PROFILE	1	LA10131	NIL	L=1920
14	AL.PROFILE	1	UN43104	NIL	L=1920
13	SHEET 2X200X350	4	NIL	ROSO/SPEC. C-K201.X2C-N112	409M
12	PILLOW LINING 1 FOR SEALING BRUSH	1	3.10113.0. 21.500.116	NIL	NIL
11	SEALING BRUSH	1	3.10113.0. 21.500.102	NIL	NIL
10	Z-SECTION	1	M1007792	NIL	NIL
9	STAINLESS STEEL TAPPING SCREW ST4.2X16-C-H (ST A3P TO IS4367 PT.11-96)	57	LIHWSS11	DIN7981 ISO: 7049-83(E)	ITEM-2
8	AL.PROFILE	2	LA10116	NIL	L=185
7	AL.PROFILE	2	UN43103	NIL	L=769
6	AL.PROFILE	2	UN43103	NIL	L=712
5	AL.PROFILE	1	LA10131	NIL	L=864
4	AL.PROFILE	1	LA10116	NIL	NIL
3	HONEYCOMB PARTITION FRAME	1	LA10174	NIL	NIL
2	PROFILE 1 FOR DOOR RABBAT	1	M1007751	NIL	NIL
1	HONEYCOMB PARTITION FRAME	2	LA10172	NIL	NIL

WELD LENGTH	ITEM	DESCRIPTION & DIMENSIONS	QPASSLY	DETAIL DRG	MATL. & SPEC.	REMARKS
NIL	M	GROUP	PARTITION FRAME	SUPERSEDES:	NIL	
30.000	KG	WEIGHT	FILE	M1007750a.PRT (2D)		
S.AREA						
NIL	M ²					
LENGTH/STL						
NIL	M					
WIDTH/THICK.						
2.400/0.020	M					
HEIGHT						
2.125	M					

SCALE	SSE/REC	1:10	CHD	RJSH
DRN	ANDR			
REF.DRG.No.	LA10161			
PL NO.	NIL			
DRG.NO.	M1007750			
ADP/SME	DY.CME			
CDE	ALT.			
SIZE	A1	SHEET	1/1	





ISO VIEW
(FOR REFERENCE ONLY)

NOTE:
1. REMOVE ALL SHARP EDGES & BURRS.

THIS DRAWING IS THE INTELLECTUAL PROPERTY OF RAIL COACH FACTORY, KAPURTHALA.
THIS DRAWING SHOULD NOT BE REPRODUCED, ALTERED, USED FOR MANUFACTURING OF
COMPONENTS, SOLD OR TRANSFERRED WITHOUT PERMISSION FROM CHIEF DESIGN ENGINEER,
RAIL COACH FACTORY, KAPURTHALA.

ALT. NO.	ALT. DATE	ZONE	ALTERATIONS	AUTHORITY
a	16/09/2022	F11	1. DRG NO. WAS LD56174 FOR ITEM-1.	DY. CME/D-II

भारत
ENTERED
में
INTO
प्रक्रिया
DATA BASE
23 SEP 2022

		3	LOCK COVER PLATE	1	LD56176	NIL	NIL			
		2	LOCK HANDLE ASSEMBLY	1	MI007754	NIL	NIL			
		1	LOCK PLATE ASSEMBLY	1	MI007794	NIL	NIL			
WELD LENGTH	ITEM	DESCRIPTION & DIMENSIONS			QPASSLY	DETAIL DRG	MATL. & SPEC.	REMARKS		
NIL	M	GROUP	INTERIOR DOORS & ACCESSORIES COMPLETE			SUPERSEDES: MI007753		ALT NIL		
WEIGHT	FILE	MI007753a. pr t (3D)								
0.500	KG	LOCK ASSEMBLY					SCALE	SSE/REC	RHS-097	
S. AREA								CHD		RJSH
NIL	M ²							DRN		SATS
LENGTH / DIA										
NIL	M	RAIL COACH FACTORY, KAPURTHALA					REF. DRG. NO.	LD56151		
WIDTH / THICK		रेल कोच फैक्टरी कपूरथला			IRS		PL NO.	NIL		
NIL	M						DRG.NO.	MI007753		
HEIGHT							ALT.	a	SIZE A3 SHEET 1/1	
NIL	M	ADE/SME			DY.CME	CDE				

LOCK ASSEMBLY

RAIL COACH FACTORY, KAPURTHALA

रेलकोच फैक्टरी कपूरथला

IRS

REF. DRG. NO. LD56151

PL NO. NIL

DRG. NO. MI007753

ALT. a SIZE A3 SHEET 1/1

DETAIL DRGS STARTING WITH "LI" ARE INTERNAL REFERENCE LISTS ONLY AND ARE NOT FOR ISSUE.

THIS IS A COMPUTER GENERATED DRAWING. ANY MANUAL ALTERATION SHALL AUTOMATICALLY RENDER IT INVALID.

FOR UNTOLERANCED DIMENSIONS REFER MDG0008 DATE OF FIRST ISSUE 24/05/2022 CGM BY

1

2

3

4

5

6

7

8

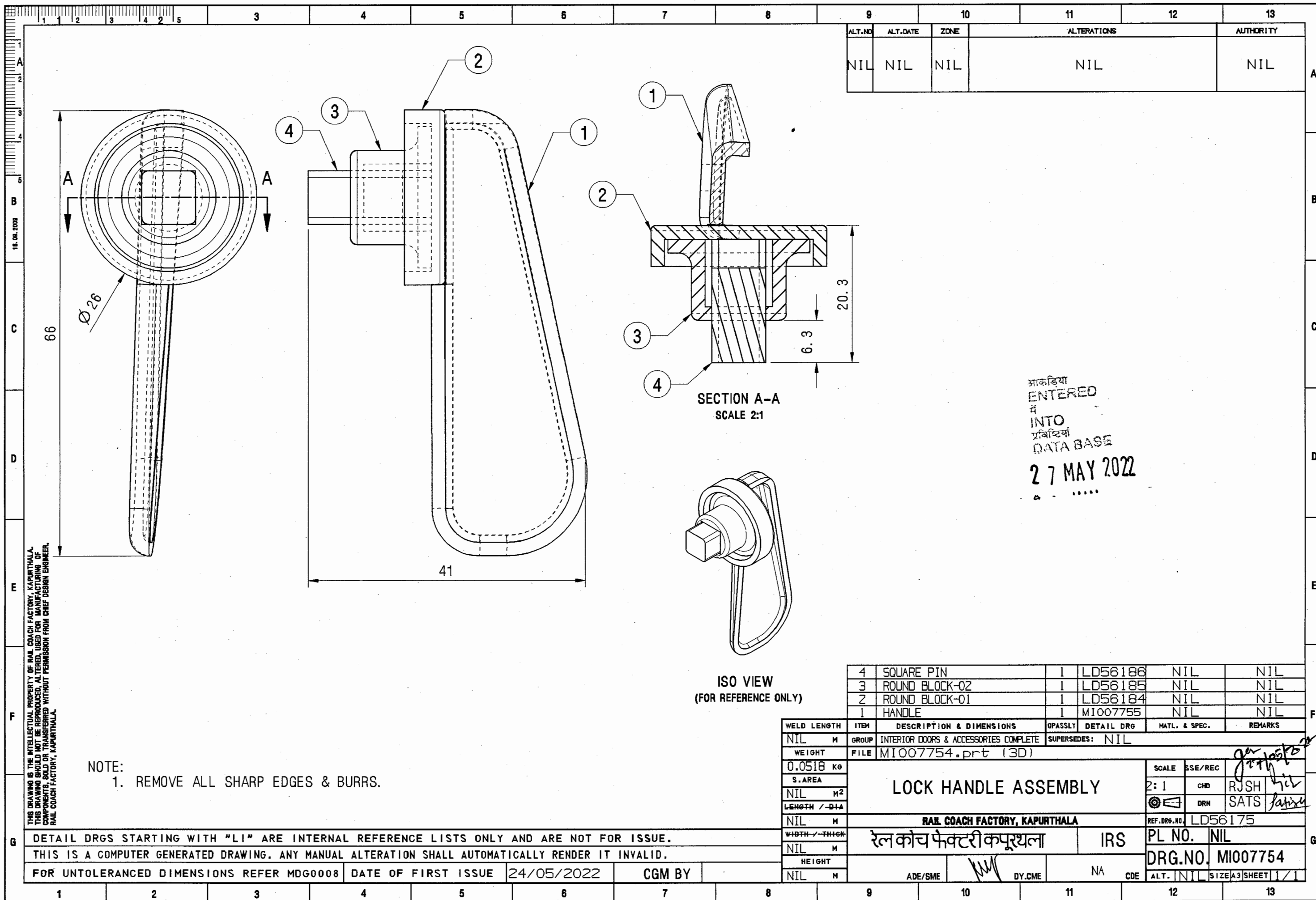
9

10

11

12

13



ALT. NO.	ALT. DATE	ZONE	ALTERATIONS	AUTHORITY
NIL	NIL	NIL	NIL	NIL

आकडिया
ENTERED
म
INTO
प्रविष्टिया
DATA BASE
27 MAY 2022
A -

THIS DRAWING IS THE INTELLECTUAL PROPERTY OF RAIL COACH FACTORY, KAPURTHALA. THIS DRAWING SHOULD NOT BE REPRODUCED, ALTERED, USED FOR MANUFACTURING OF COMPONENTS, SOLD OR TRANSFERRED WITHOUT PERMISSION FROM CHIEF DESIGN ENGINEER, RAIL COACH FACTORY, KAPURTHALA.

NOTE:
1. REMOVE ALL SHARP EDGES & BURRS.

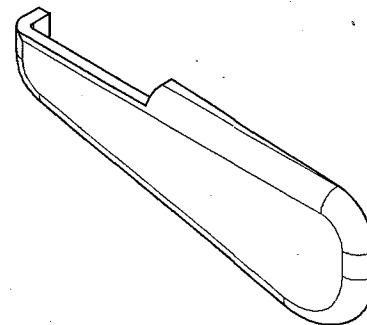
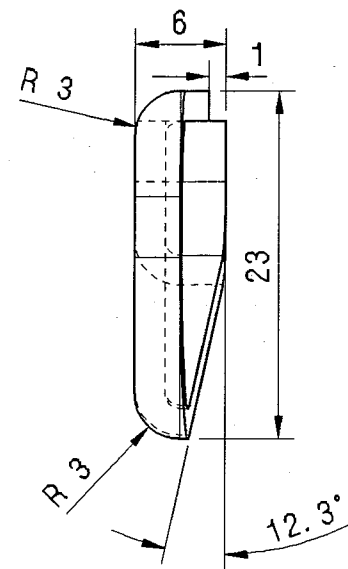
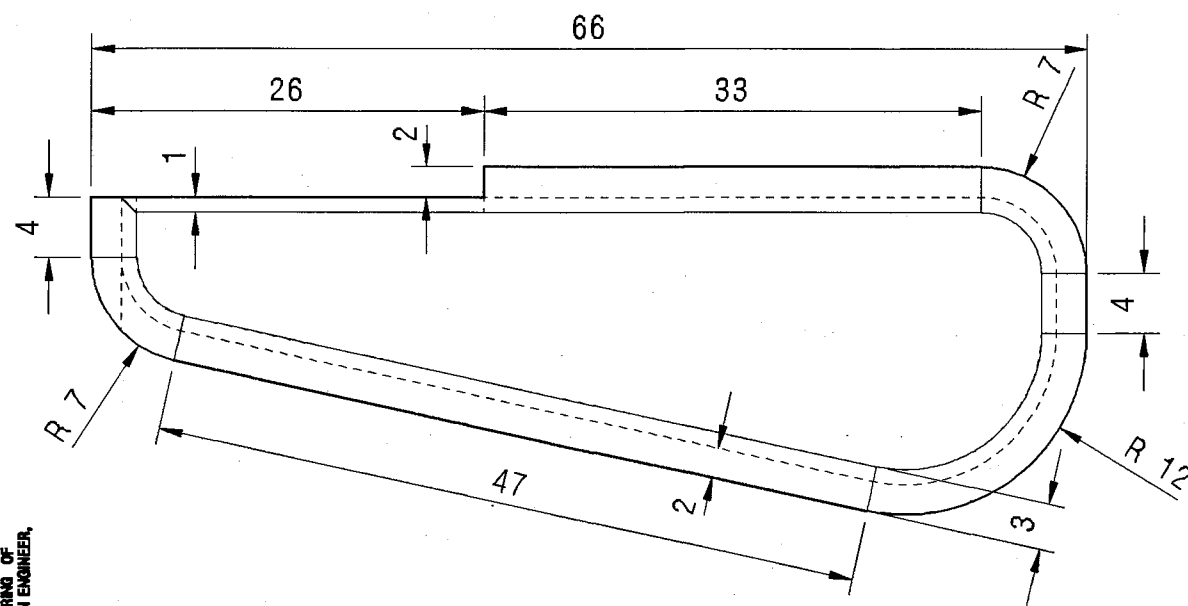
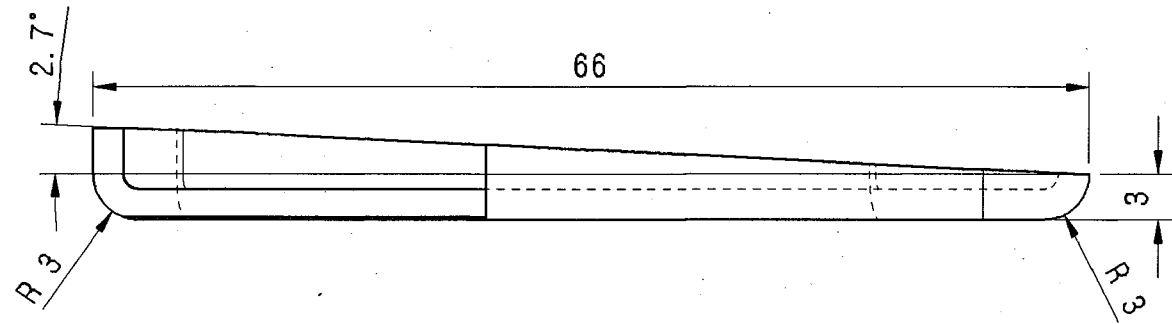
ISO VIEW
(FOR REFERENCE ONLY)

WELD LENGTH	ITEM	DESCRIPTION & DIMENSIONS	QPASSLY	DETAIL DRG	MATL. & SPEC.	REMARKS
NIL	M	GROUP	INTERIOR DOORS & ACCESSORIES COMPLETE	SUPERSEDES:	NIL	
WEIGHT	FILE	MI007754.prt (3D)				
0.0518	KG					
S. AREA						
NIL	M ²					
LENGTH / DIA						
NIL	M					
WIDTH / THICK						
NIL	M					
HEIGHT						
NIL	M					

4	SQUARE PIN	1	LD56186	NIL	NIL
3	ROUND BLOCK-02	1	LD56185	NIL	NIL
2	ROUND BLOCK-01	1	LD56184	NIL	NIL
1	HANDLE	1	MI007755	NIL	NIL

SCALE	SSE/REC	CHD	RJSH	SATS
2:1				
REF. DRG. NO.	LD56175	PL NO.	NIL	DRG. NO.
MI007754		IRS		NA
ADP/SME	DY.CME	NA	CDE	ALT. [] SIZE A3 SHEET 1/1

DETAIL DRGS STARTING WITH "LI" ARE INTERNAL REFERENCE LISTS ONLY AND ARE NOT FOR ISSUE.
THIS IS A COMPUTER GENERATED DRAWING. ANY MANUAL ALTERATION SHALL AUTOMATICALLY RENDER IT INVALID.
FOR UNTOLERANCED DIMENSIONS REFER MDG0008 DATE OF FIRST ISSUE 24/05/2022 CGM BY



NOTE: -
1. REMOVE ALL SHARP EDGES & BURRS.

ISO VIEW
(FOR REFERENCE ONLY)

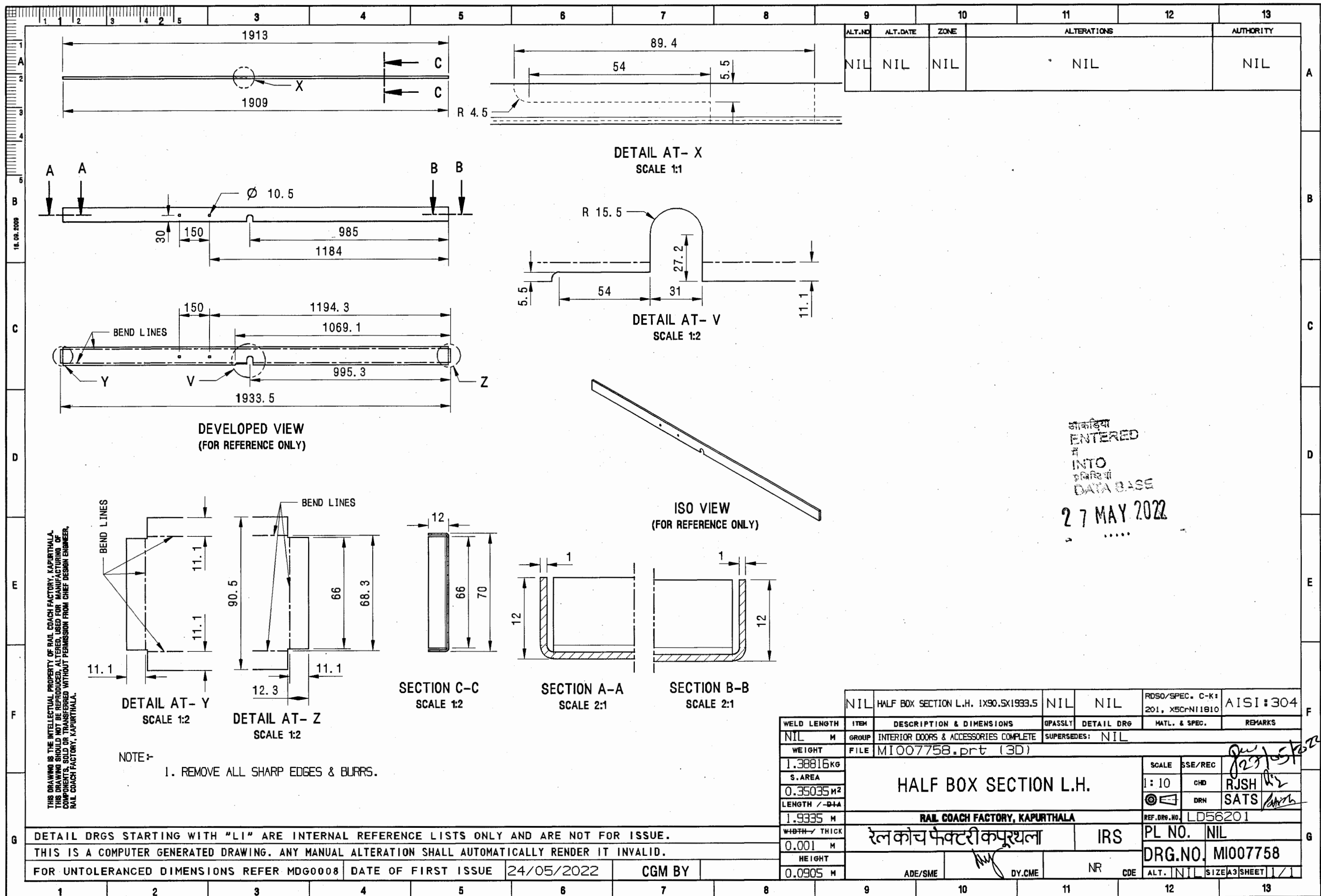
THIS DRAWING IS THE INTELLECTUAL PROPERTY OF RAIL COACH FACTORY, KAPURTHALA. THIS DRAWING SHOULD NOT BE REPRODUCED, ALTERED, USED FOR MANUFACTURING OF COMPONENTS, SOLD OR TRANSFERRED WITHOUT PERMISSION FROM CHIEF DESIGN ENGINEER, RAIL COACH FACTORY, KAPURTHALA.

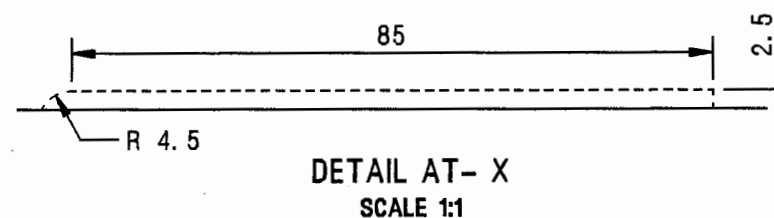
DETAIL DRGS STARTING WITH "LI" ARE INTERNAL REFERENCE LISTS ONLY AND ARE NOT FOR ISSUE.
THIS IS A COMPUTER GENERATED DRAWING. ANY MANUAL ALTERATION SHALL AUTOMATICALLY RENDER IT INVALID.
FOR UNTOLERANCED DIMENSIONS REFER MDG0008 DATE OF FIRST ISSUE 24/05/2022 CGM BY

ALT.NO	ALT.DATE	ZONE	ALTERATIONS	AUTHORITY
NIL	NIL	NIL	NIL	NIL

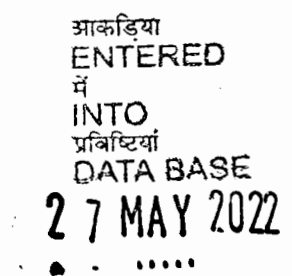
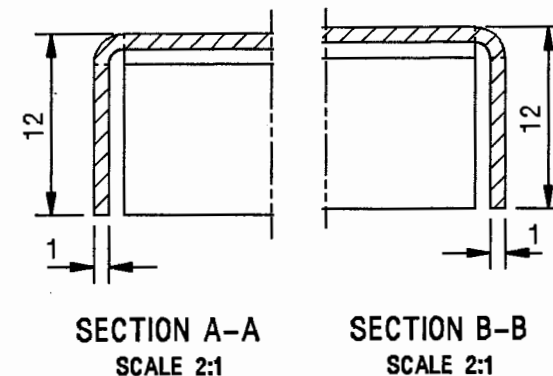
आकड़िया
में
ENTERED
INTO
प्रविष्टिया
DATA BASE
27 MAY 2022

NIL HANDLE 6X23X66		NIL	NIL	S. STEEL SHEET	NIL
				DRAW GRADE	
WELD LENGTH	ITEM	DESCRIPTION & DIMENSIONS	QPASSLY	DETAIL DRG	REMARKS
NIL	M	GROUP	INTERIOR DOORS & ACCESSORIES COMPLETE	SUPERSEDES: NIL	
WEIGHT	FILE	MI007755.prt (3D)			
0.02078 KG		HANDLE			
S. AREA				SCALE	SSE/REC
0.00291 M ²				2:1	CHD RUSH
LENGTH / DIA				DRN	SATS
0.066 M		RAIL COACH FACTORY, KAPURTHALA		REF. DRG. NO.	LD56183
WIDTH / THICK		रेल कोच फैक्टरी कपूरथला	IRS	PL NO.	NIL
0.006 M				DRG. NO.	MI007755
HEIGHT				ALT.	NIL
0.023 M		ADE/SME	DY.CME	NR	CDE
				SIZE	A3 SHEET 1/1

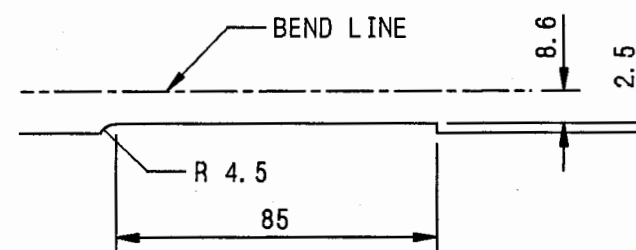
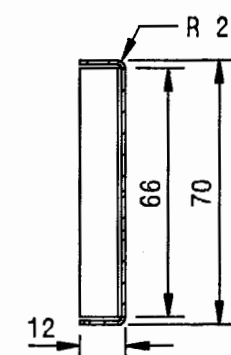
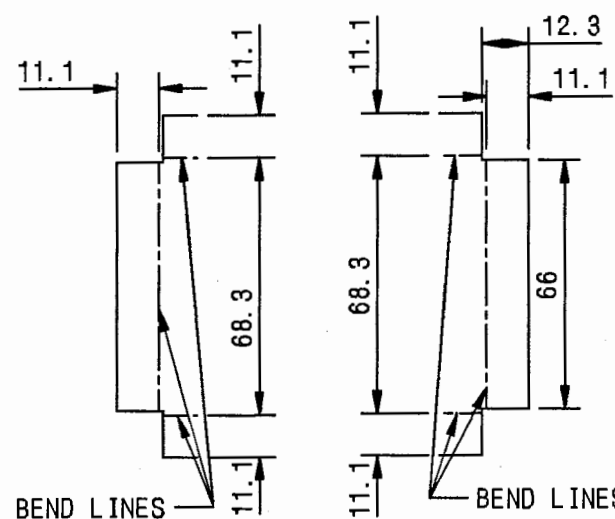




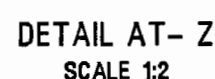
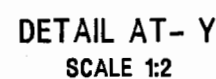
ALT.NO	ALT.DATE	ZONE	ALTERATIONS	AUTHORITY
NIL	NIL	NIL	NIL	NIL



DEVELOPED VIEW
(FOR REFERENCE ONLY)

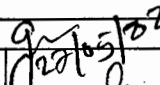
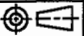


ISO VIEW
(FOR REFERENCE ONLY)



SECTION C-C
SCALE 1:2

DETAIL AT- P
SCALE 1:2

NIL		HALF BOX SECTION R.H. 1X90.5X1933.5		NIL		NIL		RD50/SPEC. C-K-1 201. X5CrNi1810		AISI:304							
WELD LENGTH		ITEM		DESCRIPTION & DIMENSIONS		OPASSLY		DETAIL DRG		MATL. & SPEC.		REMARKS					
NIL		M		GROUP		INTERIOR DOORS & ACCESSORIES COMPLETE		SUPERSEDES:		NIL							
WEIGHT		FILE		MI007759.prt (3D)													
1.3987 KG		HALF BOX SECTION R.H.								SCALE		SSE/REC					
S.AREA										1: 10		CHD				RJSH	
0.35293 M ²												DRN				SATS	
LENGTH /-B+A										REF.DRG.NO.		LD56168					
1.9335 M		RAIL COACH FACTORY, KAPURTHALA								PL NO.		NIL					
WIDTH / THICK		रेल कोच फैक्टरी कपूरथला						IRS		DRG.NO. MI007759							
0.001 M		ADE/SME		DY.CME		NR		CDE		ALT. NIL		SIZE A3 SHEET 1/1					
0.0905 M																	

THIS DRAWING IS THE INTELLECTUAL PROPERTY OF RAIL COACH FACTORY, KAPURTHALA. THIS DRAWING SHOULD NOT BE REPRODUCED, ALTERED, USED FOR MANUFACTURING OF COMPONENTS, SOLD OR TRANSFERRED WITHOUT PERMISSION FROM CHIEF DESIGN ENGINEER, RAIL COACH FACTORY, KAPURTHALA.

NOTE:
1. REMOVE ALL SHARP EDGES & BURRS.

DETAIL DRGS STARTING WITH "LI" ARE INTERNAL REFERENCE LISTS ONLY AND ARE NOT FOR ISSUE.

THIS IS A COMPUTER GENERATED DRAWING. ANY MANUAL ALTERATION SHALL AUTOMATICALLY RENDER IT INVALID.

FOR UNTOLERANCED DIMENSIONS REFER MDG0008

DATE OF FIRST ISSUE	24/05/2022
---------------------	------------

CGM BY

HALF BOX SECTION R.H.


RAIL COACH FACTORY, KAPURTHALA

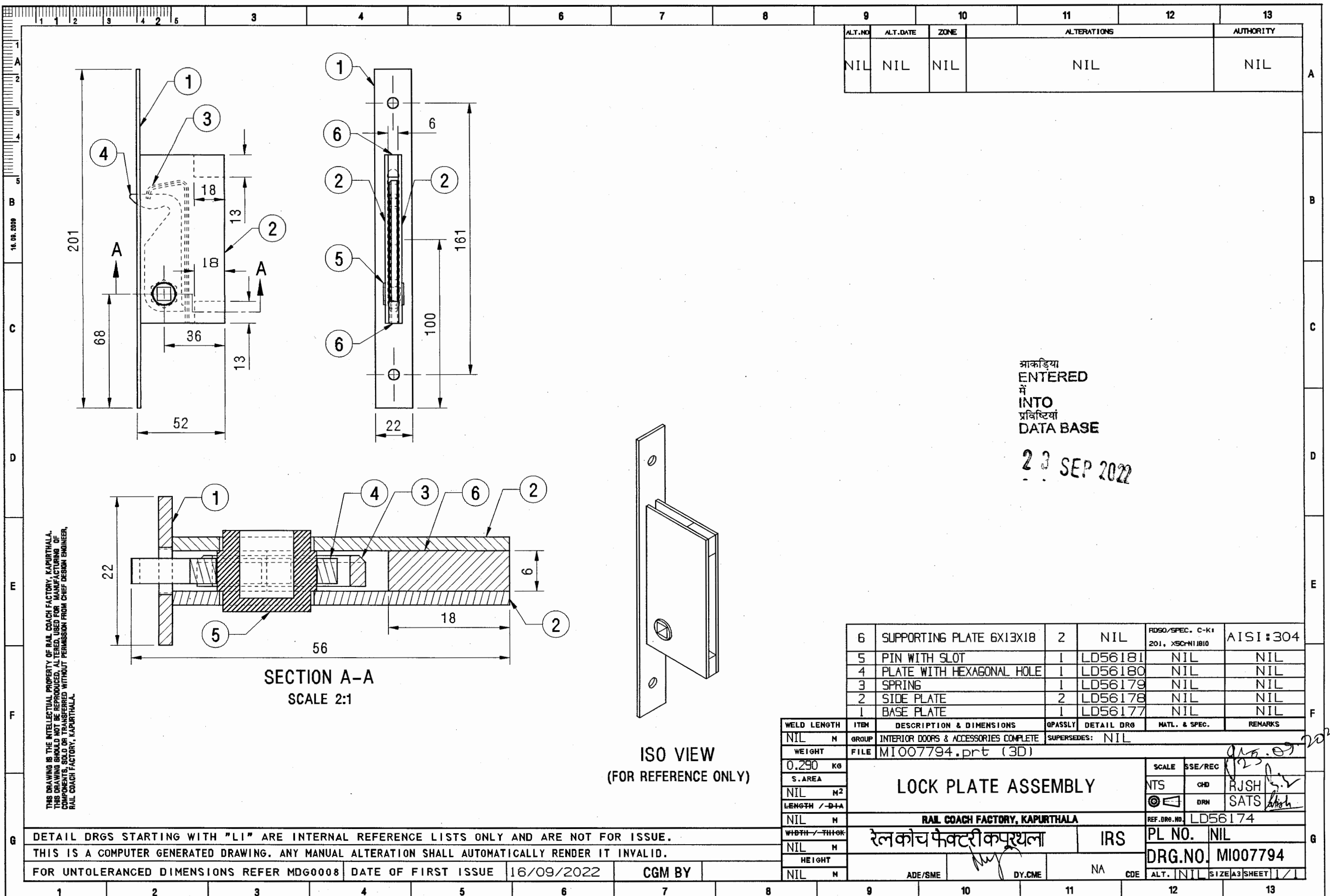
रेल कोच फैक्टरी कपुरथला

IRS

NR

CDE

SCALE	SSE/REC	J27021	
1:10	CHD	RJSH	13
	DRN	SATS	
REF. DRG. NO.		LD56168	
PL NO.		NIL	
DRG. NO.		MI007759	
ALT.	NIL	SIZE A3	SHEET 1/1



ALT. NO.	ALT. DATE	ZONE	ALTERATIONS	AUTHORITY
NIL	NIL	NIL	NIL	NIL

भ्रकडिया
ENTERED
में
INTO
प्रविष्टियां
DATA BASE

23 SEP 2022

THIS DRAWING IS THE INTELLECTUAL PROPERTY OF RAIL COACH FACTORY, KAPURTHALA. THIS DRAWING SHOULD NOT BE REPRODUCED, ALTERED, USED FOR MANUFACTURING OF COMPONENTS, SOLD OR TRANSFERRED WITHOUT PERMISSION FROM CHIEF DESIGN ENGINEER, RAIL COACH FACTORY, KAPURTHALA.

DETAIL DRGS STARTING WITH "LI" ARE INTERNAL REFERENCE LISTS ONLY AND ARE NOT FOR ISSUE.
THIS IS A COMPUTER GENERATED DRAWING. ANY MANUAL ALTERATION SHALL AUTOMATICALLY RENDER IT INVALID.

