



NOTE:-

1. BACKGROUND : SIGNAL YELLOW RAL 1003.
2. LETTERING : TRAFFIC RED RAL 3020.
3. STICKER SHALL BE PASTED ON THE SMALL RED HANDLE PASTED ON THE WINDOW GLASS.
4. PILOT SAMPLE TO BE GOT APPROVED BY DESIGN OFFICE BEFORE BULK SUPPLY IS MADE.
5. BACKGROUND AND LETTERING COLOR SHADE CAN ALSO BE ADVISED ALTERNATIVELY BY PURCHASER WITH APPROVAL OF DESIGN OFFICE.

THIS DRAWING IS THE INTELLECTUAL PROPERTY OF RAIL COACH FACTORY, KAPURTHALA. NO PART OF THIS DRAWING SHALL BE REPRODUCED, STORED IN A RETRIEVAL SYSTEM OR TRANSMITTED IN ANY FORM OR BY ANY MEANS, ELECTRONIC OR MECHANICAL, WITHOUT PERMISSION FROM COEP DESIGN ENGINEER.

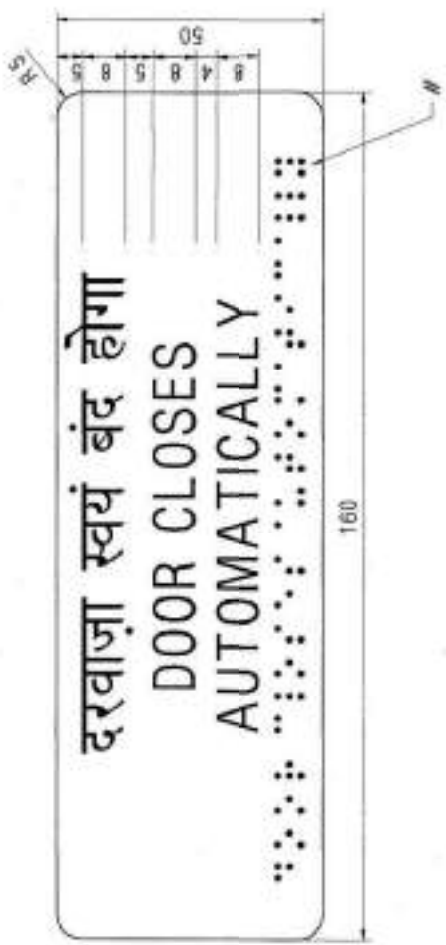
DETAIL DROS STARTING WITH "L1" ARE INTERNAL REFERENCE LISTS ONLY AND ARE NOT FOR ISSUE. THIS IS A COMPUTER GENERATED DRAWING. ANY MANUAL ALTERATION SHALL AUTOMATICALLY RENDER IT INVALID. FOR UNTOLERANCED DIMENSIONS REFER MDG0004 DATE OF FIRST ISSUE 26/10/2013 CGM BY

अवलीपन
ENTERED

INTO
सॉफ्टवेयर
DATA BASE
12 JUN 2015

NILL PULL WINDOW GLASS INSIDE		NILL	NILL	MDTS-156	NILL
ITEM	DESCRIPTION & DIMENSIONS	QUANTITY	DETAIL DRO	MTL. & SPEC.	REMARKS
1	INTENTION EQUIPMENT & ACCESSORIES		MDTS-152	ALT. 3	
FILE	NILL D641525.DWG (20)				
PULL WINDOW GLASS INSIDE (WITHOUT BRAILLE SCRIPT)					
RAL COACH FACTORY, KAPURTHALA					
SCALE	2:1	DATE	01.03.13	BY	MDL
PL NO.	NILL	PL NO.	LD64152	ALT. 15	SIZE (PORT) 11/1
रल कोच फैक्ट्री कपूरथला					
N.R.					

ALT. NO.	ALT. DATE	ZONE	ALTERNATION	AUTHORITY
a	26/06/2014	F-2	1. NOTE 1.2 MODIFIED AND NOTE 5 ADDED.	DIC NO. MD140022
b	11/06/2015	F-12	1. MATL. & SPEC. WAS ICF/MD/SPEC-253.	DIC NO. MD140022



NOTE:-

- 1. BACKGROUND : SIGNAL YELLOW RAL 1003.
- 2. LETTERING : JET BLACK RAL 9005.
- 3. ONLY FOR THE FIRST SUPPLY OF FIRM PILOT SAMPLE TO BE GOT APPROVED BY DESIGN OFFICE BEFORE BULK SUPPLY IS MADE.
- 4. BACKGROUND AND LETTERING COLOR SHADE CAN ALSO BE ADVISED ALTERNATIVELY BY PURCHASER WITH APPROVAL OF DESIGN OFFICE.
- 5. STICKER SHALL BE DIE CUT INCLUDING THE ROUND CORNERS.
- 6. SUPPLIER NAME/LOGO INDICATING THE MONTH & YEAR OF MANUFACTURE TO BE PRINTED IN THE INDICATED SPACE

प्रविष्ट
ENTERED
र
INTO
श्रवित
DATA BASE

16 MAR 2021

NOTE:-

1. BACKGROUND : SIGNAL YELLOW RAL 1003.
2. LETTERING : JET BLACK RAL 9005.
3. ONLY FOR THE FIRST SUPPLY OF FIRM PILOT SAMPLE TO BE GOT APPROVED BY DESIGN OFFICE BEFORE BULK SUPPLY IS MADE.
4. BACKGROUND AND LETTERING COLOR SHADE CAN ALSO BE ADVISED ALTERNATIVELY BY PURCHASER WITH APPROVAL OF DESIGN OFFICE.
5. STICKER SHALL BE DIE CUT INCLUDING THE ROUND CORNERS.
6. SUPPLIER NAME/LOGO INDICATING THE MONTH & YEAR OF MANUFACTURE TO BE PRINTED IN THE INDICATED SPACE

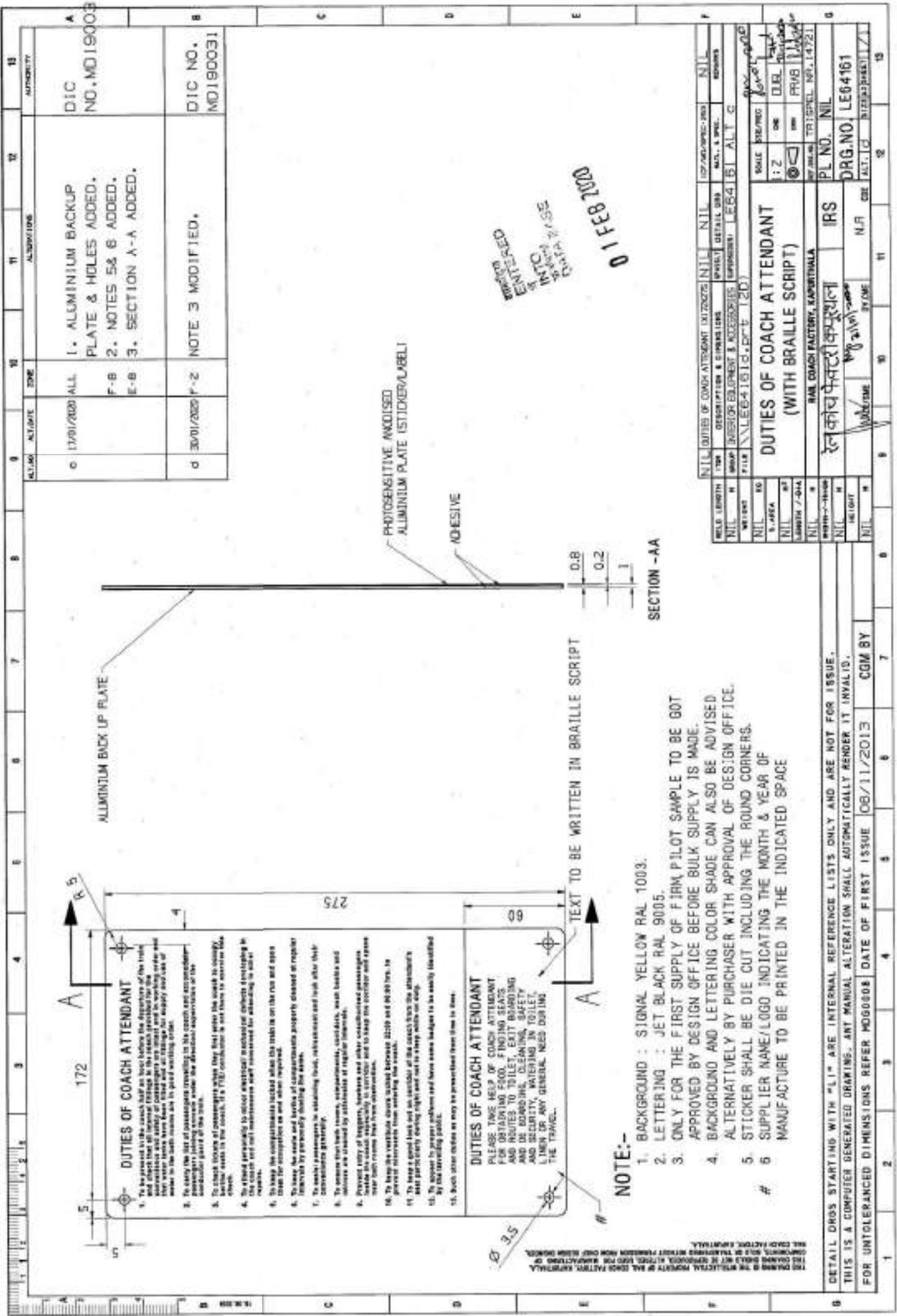
अनुमोदित
ENTERED
INTO
DATA BASE

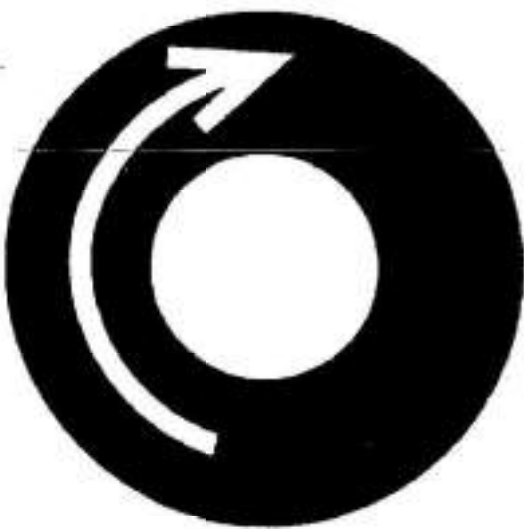
16 MAR 2021

REV.	DATE	BY	REASON	APPROVED	REMARKS
0	30/01/2020	E-3	NOTE 3 MODIFIED		DIC NO. MD190031
0	24/02/2021	ALL	1. ALUMINIUM BACKUP PLATE, HOLES & SECTION - AA DELETED. 2. TITLE UPDATED.		DIC NO. MD200052

WELD LENGTH		DOOR CLOSES AUTOMATICALLY (STICKER)		NIL		NIL		NIL		NIL		NIL	
ITEM	NO.	DESCRIPTION & DIMENSIONS	QUANTITY	DETAIL	DATE	APPROVED	REMARKS	ITEM	NO.	DESCRIPTION & DIMENSIONS	QUANTITY	DETAIL	DATE
WELD	1	1.1	1	1.1	1	1.1	1	WELD	1	1.1	1	1.1	1
WELD	2	2.1	1	2.1	1	2.1	1	WELD	2	2.1	1	2.1	1
WELD	3	3.1	1	3.1	1	3.1	1	WELD	3	3.1	1	3.1	1
WELD	4	4.1	1	4.1	1	4.1	1	WELD	4	4.1	1	4.1	1
WELD	5	5.1	1	5.1	1	5.1	1	WELD	5	5.1	1	5.1	1
WELD	6	6.1	1	6.1	1	6.1	1	WELD	6	6.1	1	6.1	1
WELD	7	7.1	1	7.1	1	7.1	1	WELD	7	7.1	1	7.1	1
WELD	8	8.1	1	8.1	1	8.1	1	WELD	8	8.1	1	8.1	1
WELD	9	9.1	1	9.1	1	9.1	1	WELD	9	9.1	1	9.1	1
WELD	10	10.1	1	10.1	1	10.1	1	WELD	10	10.1	1	10.1	1
WELD	11	11.1	1	11.1	1	11.1	1	WELD	11	11.1	1	11.1	1
WELD	12	12.1	1	12.1	1	12.1	1	WELD	12	12.1	1	12.1	1
WELD	13	13.1	1	13.1	1	13.1	1	WELD	13	13.1	1	13.1	1
WELD	14	14.1	1	14.1	1	14.1	1	WELD	14	14.1	1	14.1	1
WELD	15	15.1	1	15.1	1	15.1	1	WELD	15	15.1	1	15.1	1
WELD	16	16.1	1	16.1	1	16.1	1	WELD	16	16.1	1	16.1	1
WELD	17	17.1	1	17.1	1	17.1	1	WELD	17	17.1	1	17.1	1
WELD	18	18.1	1	18.1	1	18.1	1	WELD	18	18.1	1	18.1	1
WELD	19	19.1	1	19.1	1	19.1	1	WELD	19	19.1	1	19.1	1
WELD	20	20.1	1	20.1	1	20.1	1	WELD	20	20.1	1	20.1	1
WELD	21	21.1	1	21.1	1	21.1	1	WELD	21	21.1	1	21.1	1
WELD	22	22.1	1	22.1	1	22.1	1	WELD	22	22.1	1	22.1	1
WELD	23	23.1	1	23.1	1	23.1	1	WELD	23	23.1	1	23.1	1
WELD	24	24.1	1	24.1	1	24.1	1	WELD	24	24.1	1	24.1	1
WELD	25	25.1	1	25.1	1	25.1	1	WELD	25	25.1	1	25.1	1
WELD	26	26.1	1	26.1	1	26.1	1	WELD	26	26.1	1	26.1	1
WELD	27	27.1	1	27.1	1	27.1	1	WELD	27	27.1	1	27.1	1
WELD	28	28.1	1	28.1	1	28.1	1	WELD	28	28.1	1	28.1	1
WELD	29	29.1	1	29.1	1	29.1	1	WELD	29	29.1	1	29.1	1
WELD	30	30.1	1	30.1	1	30.1	1	WELD	30	30.1	1	30.1	1
WELD	31	31.1	1	31.1	1	31.1	1	WELD	31	31.1	1	31.1	1
WELD	32	32.1	1	32.1	1	32.1	1	WELD	32	32.1	1	32.1	1
WELD	33	33.1	1	33.1	1	33.1	1	WELD	33	33.1	1	33.1	1
WELD	34	34.1	1	34.1	1	34.1	1	WELD	34	34.1	1	34.1	1
WELD	35	35.1	1	35.1	1	35.1	1	WELD	35	35.1	1	35.1	1
WELD	36	36.1	1	36.1	1	36.1	1	WELD	36	36.1	1	36.1	1
WELD	37	37.1	1	37.1	1	37.1	1	WELD	37	37.1	1	37.1	1
WELD	38	38.1	1	38.1	1	38.1	1	WELD	38	38.1	1	38.1	1
WELD	39	39.1	1	39.1	1	39.1	1	WELD	39	39.1	1	39.1	1
WELD	40	40.1	1	40.1	1	40.1	1	WELD	40	40.1	1	40.1	1
WELD	41	41.1	1	41.1	1	41.1	1	WELD	41	41.1	1	41.1	1
WELD	42	42.1	1	42.1	1	42.1	1	WELD	42	42.1	1	42.1	1
WELD	43	43.1	1	43.1	1	43.1	1	WELD	43	43.1	1	43.1	1
WELD	44	44.1	1	44.1	1	44.1	1	WELD	44	44.1	1	44.1	1
WELD	45	45.1	1	45.1	1	45.1	1	WELD	45	45.1	1	45.1	1
WELD	46	46.1	1	46.1	1	46.1	1	WELD	46	46.1	1	46.1	1
WELD	47	47.1	1	47.1	1	47.1	1	WELD	47	47.1	1	47.1	1
WELD	48	48.1	1	48.1	1	48.1	1	WELD	48	48.1	1	48.1	1
WELD	49	49.1	1	49.1	1	49.1	1	WELD	49	49.1	1	49.1	1
WELD	50	50.1	1	50.1	1	50.1	1	WELD	50	50.1	1	50.1	1
WELD	51	51.1	1	51.1	1	51.1	1	WELD	51	51.1	1	51.1	1
WELD	52	52.1	1	52.1	1	52.1	1	WELD	52	52.1	1	52.1	1
WELD	53	53.1	1	53.1	1	53.1	1	WELD	53	53.1	1	53.1	1
WELD	54	54.1	1	54.1	1	54.1	1	WELD	54	54.1	1	54.1	1
WELD	55	55.1	1	55.1	1	55.1	1	WELD	55	55.1	1	55.1	1
WELD	56	56.1	1	56.1	1	56.1	1	WELD	56	56.1	1	56.1	1
WELD	57	57.1	1	57.1	1	57.1	1	WELD	57	57.1	1	57.1	1
WELD	58	58.1	1	58.1	1	58.1	1	WELD	58	58.1	1	58.1	1
WELD	59	59.1	1	59.1	1	59.1	1	WELD	59	59.1	1	59.1	1
WELD	60	60.1	1	60.1	1	60.1	1	WELD	60	60.1	1	60.1	1
WELD	61	61.1	1	61.1	1	61.1	1	WELD	61	61.1	1	61.1	1
WELD	62	62.1	1	62.1	1	62.1	1	WELD	62	62.1	1	62.1	1
WELD	63	63.1	1	63.1	1	63.1	1	WELD	63	63.1	1	63.1	1
WELD	64	64.1	1	64.1	1	64.1	1	WELD	64	64.1	1	64.1	1
WELD	65	65.1	1	65.1	1	65.1	1	WELD	65	65.1	1	65.1	1
WELD	66	66.1	1	66.1	1	66.1	1	WELD	66	66.1	1	66.1	1
WELD	67	67.1	1	67.1	1	67.1	1	WELD	67	67.1	1	67.1	1
WELD	68	68.1	1	68.1	1	68.1	1	WELD	68	68.1	1	68.1	1
WELD	69	69.1	1	69.1	1	69.1	1	WELD	69	69.1	1	69.1	1
WELD	70	70.1	1	70.1	1	70.1	1	WELD	70	70.1	1	70.1	1
WELD	71	71.1	1	71.1	1	71.1	1	WELD	71	71.1	1	71.1	1
WELD	72	72.1	1	72.1	1	72.1	1	WELD	72	72.1	1	72.1	1
WELD	73	73.1	1	73.1	1	73.1	1	WELD	73	73.1	1	73.1	1
WELD	74	74.1	1	74.1	1	74.1	1	WELD	74	74.1	1	74.1	1
WELD	75	75.1	1	75.1	1	75.1	1	WELD	75	75.1	1	75.1	1
WELD	76	76.1	1	76.1	1	76.1	1	WELD	76	76.1	1	76.1	1
WELD	77	77.1	1	77.1	1	77.1	1	WELD	77	77.1	1	77.1	1
WELD	78	78.1	1	78.1	1	78.1	1	WELD	78	78.1	1	78.1	1
WELD	79	79.1	1	79.1	1	79.1	1	WELD	79	79.1	1	79.1	1
WELD	80	80.1	1	80.1	1	80.1	1	WELD	80	80.1	1	80.1	1
WELD	81	81.1	1	81.1	1	81.1	1	WELD	81	81.1	1	81.1	1
WELD	82	82.1	1	82.1	1	82.1	1	WELD	82	82.1	1	82.1	1
WELD	83	83.1	1	83.1	1	83.1	1	WELD	83	83.1	1	83.1	1
WELD	84	84.1	1	84.1	1	84.1	1	WELD	84	84.1	1	84.1	1
WELD	85	85.1	1	85.1	1	85.1	1	WELD	85	85.1	1	85.1	1
WELD	86	86.1	1	86.1	1	86.1	1	WELD	86	86.1	1	86.1	1
WELD	87	87.1	1	87.1	1	87.1	1	WELD	87	87.1	1	87.1	1
WELD	88	88.1	1	88.1	1	88.1	1	WELD	88	88.1	1	88.1	1
WELD	89	89.1	1	89.1	1	89.1	1	WELD	89	89.1	1	89.1	1
WELD	90	90.1	1	90.1	1	90.1	1	WELD	90	90.1	1	90.1	1
WELD	91	91.1	1	91.1	1	91.1	1	WELD	91	91.1	1	91.1	1
WELD	92	92.1	1	92.1	1	92.1	1	WELD	92	92.1	1	92.1	1
WELD	93	93.1	1	93.1	1	93.1	1	WELD	93	93.1	1	93.1	1
WELD	94	94.1	1	94.1	1	94.1	1	WELD	94	94.1	1	94.1	1
WELD	95	95.1	1	95.1	1	95.1	1	WELD	95	95.1	1	95.1	1
WELD	96	96.1	1	96.1	1	96.1	1	WELD	96	96.1	1	96.1	1
WELD	97	97.1	1	97.1	1	97.1	1	WELD	97	97.1	1	97.1	1
WELD	98	98.1	1	98.1	1	98.1	1	WELD	98	98.1	1	98.1	1
WELD	99	99.1	1	99.1	1	99.1	1	WELD	99	99.1	1	99.1	1
WELD	100	100.1	1	100.1	1	100.1	1	WELD	100	100.1	1	100.1	1

DETAIL DRS STARTING WITH "L1" ARE INTERNAL REFERENCE LISTS ONLY AND ARE NOT FOR ISSUE.
THIS IS A COMPUTER GENERATED DRAWING. ANY MANUAL ALTERATION SHALL AUTOMATICALLY RENDER IT INVALID.
FOR UNTOLERANCED DIMENSIONS REFER MD00003 DATE OF FIRST ISSUE 01/11/2013 CGM BY





40 x 43

NOTE:-

1. BACKGROUND : SIGNAL YELLOW RAL 1003.
2. LETTERING : JET BLACK RAL 9005.
3. PILOT SAMPLE TO BE GOT APPROVED BY DESIGN OFFICE BEFORE BULK SUPPLY IS MADE.
4. BACKGROUND AND LETTERING COLOR SHADE CAN ALSO BE ADVISED ALTERNATIVELY BY PURCHASER WITH APPROVAL OF DESIGN OFFICE.

THE BEARING IS THE INTELLECTUAL PROPERTY OF B&B BOOK FACTORY, KAPITALLY.
THIS BEARING SHOULD NOT BE REPRODUCED, AT ANY COST FOR ANY PURPOSES OF
COMMERCIAL OR NON-COMMERCIAL NATURE WITHOUT PERMISSION FROM B&B BOOK FACTORY.

B&B BOOK FACTORY, KAPITALLY

[illegible]

1		2		3		4		5		6		7		8		9		10		11		12		13																													
													ALUMINIUM BACK UP PLATE PHOTOGRAPHIC AND COLOURED ALUMINIUM PLATE (STICKER/LABEL)		ADHESIVE		SECTION-AA 		<p>NOTE:-</p> <ol style="list-style-type: none"> 1. BACKGROUND : SIGNAL YELLOW RAL 1003. 2. LETTERING : TRAFFIC RED RAL 3020. 3. ONLY FOR THE FIRST SUPPLY OF FIRM PILOT SAMPLE TO BE GOT APPROVED BY DESIGN OFFICE BEFORE BULK SUPPLY IS MADE. 4. BACKGROUND AND LETTERING COLOR SHADE CAN ALSO BE ADVISED ALTERNATIVELY BY PURCHASER WITH APPROVAL OF DESIGN OFFICE. 5. STICKER SHALL BE DIE CUT INCLUDING THE ROUND CORNERS. 6. SUPPLIER NAME/LOGO INDICATING THE MONTH & YEAR OF MANUFACTURE TO BE PRINTED IN THE INDICATED SPACE 																																		
<p>DETAILS:</p> <table border="1"> <tr> <td colspan="2">b</td> <td colspan="2">1300/2500 ALL</td> <td colspan="2">1 ALUMINIUM BACKUP PLATE & HOLES ADDED.</td> <td colspan="2">DTC NO. MD190031</td> </tr> <tr> <td colspan="2">c</td> <td colspan="2">3000/2500 F-2</td> <td colspan="2">NOTE 3 MODIFIED</td> <td colspan="2">DTC NO. MD190031</td> </tr> </table>													b		1300/2500 ALL		1 ALUMINIUM BACKUP PLATE & HOLES ADDED.		DTC NO. MD190031		c		3000/2500 F-2		NOTE 3 MODIFIED		DTC NO. MD190031		<p>REVISIONS:</p> <table border="1"> <tr> <th>NO.</th> <th>DESCRIPTION</th> <th>DATE</th> <th>BY</th> <th>CHKD.</th> </tr> <tr> <td>1</td> <td>INITIAL DESIGN</td> <td>11/11/2013</td> <td>CGM BY</td> <td></td> </tr> </table>															NO.	DESCRIPTION	DATE	BY	CHKD.	1	INITIAL DESIGN	11/11/2013	CGM BY	
b		1300/2500 ALL		1 ALUMINIUM BACKUP PLATE & HOLES ADDED.		DTC NO. MD190031																																															
c		3000/2500 F-2		NOTE 3 MODIFIED		DTC NO. MD190031																																															
NO.	DESCRIPTION	DATE	BY	CHKD.																																																	
1	INITIAL DESIGN	11/11/2013	CGM BY																																																		
<p>GENERAL NOTES:</p> <ol style="list-style-type: none"> 1. THE DRAWING IS THE PROPERTY OF THE DESIGN OFFICE. IT IS TO BE USED ONLY FOR THE PURPOSES SPECIFIED AND NOT TO BE REPRODUCED OR TRANSMITTED IN ANY FORM OR BY ANY MEANS, ELECTRONIC OR MECHANICAL, INCLUDING PHOTOCOPYING, RECORDING, OR BY ANY INFORMATION STORAGE AND RETRIEVAL SYSTEM. 2. THE DRAWING IS TO BE USED ONLY FOR THE PURPOSES SPECIFIED AND NOT TO BE REPRODUCED OR TRANSMITTED IN ANY FORM OR BY ANY MEANS, ELECTRONIC OR MECHANICAL, INCLUDING PHOTOCOPYING, RECORDING, OR BY ANY INFORMATION STORAGE AND RETRIEVAL SYSTEM. 													<p>PROJECT INFORMATION:</p> <table border="1"> <tr> <td colspan="2">PROJECT NO.</td> <td colspan="2">MD190031</td> </tr> <tr> <td colspan="2">PROJECT NAME</td> <td colspan="2">WESTERN STYLE (WITH BRAILLE SCRIPT)</td> </tr> <tr> <td colspan="2">PROJECT LOCATION</td> <td colspan="2">RAIL CROSSING, RAIPUR, JHARKHAND</td> </tr> <tr> <td colspan="2">PROJECT DATE</td> <td colspan="2">11/11/2013</td> </tr> <tr> <td colspan="2">PROJECT BY</td> <td colspan="2">CGM BY</td> </tr> </table>															PROJECT NO.		MD190031		PROJECT NAME		WESTERN STYLE (WITH BRAILLE SCRIPT)		PROJECT LOCATION		RAIL CROSSING, RAIPUR, JHARKHAND		PROJECT DATE		11/11/2013		PROJECT BY		CGM BY							
PROJECT NO.		MD190031																																																			
PROJECT NAME		WESTERN STYLE (WITH BRAILLE SCRIPT)																																																			
PROJECT LOCATION		RAIL CROSSING, RAIPUR, JHARKHAND																																																			
PROJECT DATE		11/11/2013																																																			
PROJECT BY		CGM BY																																																			

1	2	3	4	5	6	7	8	9	10	11	12	13
ITEM NO.	DESCRIPTION	SIZE	SPECIFICATION	COATINGS								
1	CHOBERT RIVET WITH PIN	ØR-220-19 ØM ØR-220-17 PD	FOR CHOBERT RIVET WITH PIN	AC25 TO IS:1868-1982								
2	CSK HEAD RIVET	3X12	IS:2907-1984, ALUMINIUM	AC25 TO IS:1868-1982								
3	CSK HEAD RIVET	3X15	IS:2907-1984, ALUMINIUM	AC25 TO IS:1868-1982								
4	CSK HEAD RIVET	3X20	IS:2907-1984, ALUMINIUM	AC25 TO IS:1868-1982								
5	CSK HEAD RIVET	4X8	IS:2907-1984, ALUMINIUM	AC25 TO IS:1868-1982								
6	CSK HEAD RIVET	4X10	IS:2907-1984, ALUMINIUM	AC25 TO IS:1868-1982								
7	CSK HEAD RIVET	5X20	IS:2907-1984, ALUMINIUM	AC25 TO IS:1868-1982								
8	CSK HEAD RIVET	5X26	IS:2907-1984, ALUMINIUM	AC25 TO IS:1868-1982								
9	CSK HEAD RIVET	5X32	IS:2907-1984, ALUMINIUM	AC25 TO IS:1868-1982								
10	CSK HEAD RIVET	5X40	IS:2907-1984, ALUMINIUM	AC25 TO IS:1868-1982								
11	SNAIP HEAD RIVET	2X8	IS:2907-1984, ALUMINIUM	AC25 TO IS:1868-1982								
12	SNAIP HEAD RIVET	3X8	IS:2907-1984, ALUMINIUM	AC25 TO IS:1868-1982								
13	SNAIP HEAD RIVET	3X12	IS:2907-1984, ALUMINIUM	AC25 TO IS:1868-1982								
14	SNAIP HEAD RIVET	3X15	IS:2907-1984, ALUMINIUM	AC25 TO IS:1868-1982								
15	SNAIP HEAD RIVET	3X22	IS:2907-1984, ALUMINIUM	AC25 TO IS:1868-1982								
16	SNAIP HEAD RIVET	4X8	IS:2907-1984, ALUMINIUM	AC25 TO IS:1868-1982								
17	SNAIP HEAD RIVET	4X12	IS:2907-1984, ALUMINIUM	AC25 TO IS:1868-1982								
18	SNAIP HEAD RIVET	5X12	IS:2907-1984, ALUMINIUM	AC25 TO IS:1868-1982								
19	SNAIP HEAD RIVET	5X40	IS:2907-1984, ALUMINIUM	AC25 TO IS:1868-1982								
20	SNAIP HEAD RIVET	5X50	IS:2907-1984, ALUMINIUM	AC25 TO IS:1868-1982								
21	SNAIP HEAD RIVET	6X26	IS:2907-1984, ALUMINIUM	AC25 TO IS:1868-1982								
22	CSK HEAD RIVET	6X22	IS:2155-1982, STEEL	MOIS 057								
23	SNAIP HEAD RIVET	6X50	IS:2155-1982, STEEL	MOIS 057								
24	SNAIP HEAD RIVET	5X20	IS:2907-1984, ALUMINIUM	AC25 TO IS:1868-1982								
25	SNAIP HEAD RIVET	6X26	IS:2155-1982, STEEL	MOIS 057								
26	CSK HEAD RIVET	3X8	IS:2907-1984, ALUMINIUM	AC25 TO IS:1868-1982								
27	SNAIP HEAD RIVET	16X50	IS:1928-1982, STEEL	MOIS 057								
28	CSK HEAD RIVET	5X30	IS:2907-1982, ALUMINIUM	AC25 TO IS:1868-1982								
29	CSK HEAD RIVET	3X16	IS:2907-1982, ALUMINIUM	AC25 TO IS:1868-1982								
30	SNAIP HEAD RIVET	3X16	IS:2907-1982, ALUMINIUM	AC25 TO IS:1868-1982								
31	SNAIP HEAD RIVET	4X30	IS:2907-1982, ALUMINIUM	AC25 TO IS:1868-1982								
32	SNAIP HEAD RIVET	6X35	IS:2155-1982, STEEL	MOIS 057								
33	SNAIP HEAD RIVET	10X60	IS:2907-1982, ALUMINIUM	AC25 TO IS:1868-1982								
34	CSK HEAD RIVET	5X12	IS:2907-1982, ALUMINIUM	AC25 TO IS:1868-1982								
35	CSK HEAD RIVET	6X12	IS:2155-1982, STEEL	MOIS 057								
36	BLIND RIVET	4X10	DIN7337									

ITEM NO. 22 TO 30 ADDED.
NOTE 1 ADDED.

ITEM NO. 31 TO 36 ADDED.

DTIC NO. MO 990233
SME/DEV

26 SEP 2001

26 SEP 2001

NOTE:-

1. NS STANDS FOR NON STANDARD HARDWARES. THESE SHOULD BE DISCOURAGED FOR FUTURE USE.

STANDARDISED LIST OF RIVETS

INDIAN RAILWAYS STANDARD

PL NO. 04029616

THIS IS A COMPUTER GENERATED DRAWING. ANY MANUAL ALTERATION SHALL AUTOMATICALLY RENDER IT INVALID.

DATE OF FIRST ISSUE 21/12/93

1	2	3	4	5	6	7	8	9	10	11	12	13																																																																																																																												
<table border="1"><thead><tr><th>ITEM DESCRIPTION</th><th>SIZE</th><th>SPECIFICATION</th><th>COATING</th></tr></thead><tbody><tr><td>NS 1 PLAIN WASHER</td><td>A3.5</td><td>IS:2016-1967, ALUMINIUM</td><td>AC25 TO IS:1988-82</td></tr><tr><td>2 PLAIN WASHER</td><td>A4.5</td><td>IS:2016-1967, ALUMINIUM</td><td>AC25 TO IS:1988-82</td></tr><tr><td>3 PLAIN WASHER</td><td>A5.5</td><td>IS:2016-1967, ALUMINIUM</td><td>AC25 TO IS:1988-82</td></tr><tr><td>4 PLAIN WASHER</td><td>A8</td><td>IS:2016-1967, STEEL</td><td>MOTS 057</td></tr><tr><td>5 PLAIN WASHER</td><td>B6</td><td>IS:2016-1967, STEEL</td><td>MOTS 057</td></tr><tr><td>6 PLAIN WASHER</td><td>B6.6</td><td>IS:2016-1967, STEEL</td><td>MOTS 057</td></tr><tr><td>7 PUNCHED WASHER</td><td>A11</td><td>IS:2016-1967, STEEL</td><td>MOTS 057</td></tr><tr><td>8 PUNCHED WASHER</td><td>A12</td><td>IS:2016-1967, STEEL</td><td>MOTS 057</td></tr><tr><td>9 PUNCHED WASHER</td><td>A14</td><td>IS:2016-1967, STEEL</td><td>MOTS 057</td></tr><tr><td>10 PUNCHED WASHER</td><td>A16</td><td>IS:2016-1967, STEEL</td><td>MOTS 057</td></tr><tr><td>11 PUNCHED WASHER</td><td>A18</td><td>IS:2016-1967, STEEL</td><td>MOTS 057</td></tr><tr><td>12 PUNCHED WASHER</td><td>A20</td><td>IS:2016-1967, STEEL</td><td>MOTS 057</td></tr><tr><td>13 PUNCHED WASHER</td><td>A22</td><td>IS:2016-1967, STEEL</td><td>MOTS 057</td></tr><tr><td>14 PUNCHED WASHER</td><td>A24</td><td>IS:2016-1967, STEEL</td><td>MOTS 057</td></tr><tr><td>15 PUNCHED WASHER</td><td>A26</td><td>IS:2016-1967, STEEL</td><td>MOTS 057</td></tr><tr><td>16 PUNCHED WASHER</td><td>A30</td><td>IS:2016-1967, STEEL</td><td>MOTS 057</td></tr><tr><td>17 PUNCHED WASHER</td><td>A42</td><td>IS:2016-1967, STEEL</td><td>MOTS 057</td></tr><tr><td>18 SPRING WASHER</td><td>B5</td><td>IS:3063-1994</td><td>MOTS 057</td></tr><tr><td>19 SPRING WASHER</td><td>B6</td><td>IS:3063-1994</td><td>MOTS 057</td></tr><tr><td>20 SPRING WASHER</td><td>B8</td><td>IS:3063-1994</td><td>MOTS 057</td></tr><tr><td>21 SPRING WASHER</td><td>B10</td><td>IS:3063-1994</td><td>MOTS 057</td></tr><tr><td>22 SPRING WASHER</td><td>B12</td><td>IS:3063-1994</td><td>MOTS 057</td></tr><tr><td>23 SPRING WASHER</td><td>B16</td><td>IS:3063-1994</td><td>MOTS 057</td></tr><tr><td>24 SPRING WASHER</td><td>B18</td><td>IS:3063-1994</td><td>MOTS 057</td></tr><tr><td>25 SPRING WASHER</td><td>B20</td><td>IS:3063-1994</td><td>MOTS 057</td></tr><tr><td>26 SPRING WASHER</td><td>B22</td><td>IS:3063-1994</td><td>MOTS 057</td></tr><tr><td>27 SPRING WASHER</td><td>B24</td><td>IS:3063-1994</td><td>MOTS 057</td></tr><tr><td>28 PLAIN WASHER</td><td>A33</td><td>IS:2016-1967, STEEL</td><td>MOTS 057</td></tr><tr><td>29 PLAIN WASHER</td><td>A3.4</td><td>IS:2016-1967, ALUMINIUM</td><td>AC25 TO IS:1988-82</td></tr><tr><td>30 MACHINED WASHER</td><td>A31</td><td>IS:2016-1967</td><td>MOTS 057</td></tr></tbody></table>													ITEM DESCRIPTION	SIZE	SPECIFICATION	COATING	NS 1 PLAIN WASHER	A3.5	IS:2016-1967, ALUMINIUM	AC25 TO IS:1988-82	2 PLAIN WASHER	A4.5	IS:2016-1967, ALUMINIUM	AC25 TO IS:1988-82	3 PLAIN WASHER	A5.5	IS:2016-1967, ALUMINIUM	AC25 TO IS:1988-82	4 PLAIN WASHER	A8	IS:2016-1967, STEEL	MOTS 057	5 PLAIN WASHER	B6	IS:2016-1967, STEEL	MOTS 057	6 PLAIN WASHER	B6.6	IS:2016-1967, STEEL	MOTS 057	7 PUNCHED WASHER	A11	IS:2016-1967, STEEL	MOTS 057	8 PUNCHED WASHER	A12	IS:2016-1967, STEEL	MOTS 057	9 PUNCHED WASHER	A14	IS:2016-1967, STEEL	MOTS 057	10 PUNCHED WASHER	A16	IS:2016-1967, STEEL	MOTS 057	11 PUNCHED WASHER	A18	IS:2016-1967, STEEL	MOTS 057	12 PUNCHED WASHER	A20	IS:2016-1967, STEEL	MOTS 057	13 PUNCHED WASHER	A22	IS:2016-1967, STEEL	MOTS 057	14 PUNCHED WASHER	A24	IS:2016-1967, STEEL	MOTS 057	15 PUNCHED WASHER	A26	IS:2016-1967, STEEL	MOTS 057	16 PUNCHED WASHER	A30	IS:2016-1967, STEEL	MOTS 057	17 PUNCHED WASHER	A42	IS:2016-1967, STEEL	MOTS 057	18 SPRING WASHER	B5	IS:3063-1994	MOTS 057	19 SPRING WASHER	B6	IS:3063-1994	MOTS 057	20 SPRING WASHER	B8	IS:3063-1994	MOTS 057	21 SPRING WASHER	B10	IS:3063-1994	MOTS 057	22 SPRING WASHER	B12	IS:3063-1994	MOTS 057	23 SPRING WASHER	B16	IS:3063-1994	MOTS 057	24 SPRING WASHER	B18	IS:3063-1994	MOTS 057	25 SPRING WASHER	B20	IS:3063-1994	MOTS 057	26 SPRING WASHER	B22	IS:3063-1994	MOTS 057	27 SPRING WASHER	B24	IS:3063-1994	MOTS 057	28 PLAIN WASHER	A33	IS:2016-1967, STEEL	MOTS 057	29 PLAIN WASHER	A3.4	IS:2016-1967, ALUMINIUM	AC25 TO IS:1988-82	30 MACHINED WASHER	A31	IS:2016-1967	MOTS 057
ITEM DESCRIPTION	SIZE	SPECIFICATION	COATING																																																																																																																																					
NS 1 PLAIN WASHER	A3.5	IS:2016-1967, ALUMINIUM	AC25 TO IS:1988-82																																																																																																																																					
2 PLAIN WASHER	A4.5	IS:2016-1967, ALUMINIUM	AC25 TO IS:1988-82																																																																																																																																					
3 PLAIN WASHER	A5.5	IS:2016-1967, ALUMINIUM	AC25 TO IS:1988-82																																																																																																																																					
4 PLAIN WASHER	A8	IS:2016-1967, STEEL	MOTS 057																																																																																																																																					
5 PLAIN WASHER	B6	IS:2016-1967, STEEL	MOTS 057																																																																																																																																					
6 PLAIN WASHER	B6.6	IS:2016-1967, STEEL	MOTS 057																																																																																																																																					
7 PUNCHED WASHER	A11	IS:2016-1967, STEEL	MOTS 057																																																																																																																																					
8 PUNCHED WASHER	A12	IS:2016-1967, STEEL	MOTS 057																																																																																																																																					
9 PUNCHED WASHER	A14	IS:2016-1967, STEEL	MOTS 057																																																																																																																																					
10 PUNCHED WASHER	A16	IS:2016-1967, STEEL	MOTS 057																																																																																																																																					
11 PUNCHED WASHER	A18	IS:2016-1967, STEEL	MOTS 057																																																																																																																																					
12 PUNCHED WASHER	A20	IS:2016-1967, STEEL	MOTS 057																																																																																																																																					
13 PUNCHED WASHER	A22	IS:2016-1967, STEEL	MOTS 057																																																																																																																																					
14 PUNCHED WASHER	A24	IS:2016-1967, STEEL	MOTS 057																																																																																																																																					
15 PUNCHED WASHER	A26	IS:2016-1967, STEEL	MOTS 057																																																																																																																																					
16 PUNCHED WASHER	A30	IS:2016-1967, STEEL	MOTS 057																																																																																																																																					
17 PUNCHED WASHER	A42	IS:2016-1967, STEEL	MOTS 057																																																																																																																																					
18 SPRING WASHER	B5	IS:3063-1994	MOTS 057																																																																																																																																					
19 SPRING WASHER	B6	IS:3063-1994	MOTS 057																																																																																																																																					
20 SPRING WASHER	B8	IS:3063-1994	MOTS 057																																																																																																																																					
21 SPRING WASHER	B10	IS:3063-1994	MOTS 057																																																																																																																																					
22 SPRING WASHER	B12	IS:3063-1994	MOTS 057																																																																																																																																					
23 SPRING WASHER	B16	IS:3063-1994	MOTS 057																																																																																																																																					
24 SPRING WASHER	B18	IS:3063-1994	MOTS 057																																																																																																																																					
25 SPRING WASHER	B20	IS:3063-1994	MOTS 057																																																																																																																																					
26 SPRING WASHER	B22	IS:3063-1994	MOTS 057																																																																																																																																					
27 SPRING WASHER	B24	IS:3063-1994	MOTS 057																																																																																																																																					
28 PLAIN WASHER	A33	IS:2016-1967, STEEL	MOTS 057																																																																																																																																					
29 PLAIN WASHER	A3.4	IS:2016-1967, ALUMINIUM	AC25 TO IS:1988-82																																																																																																																																					
30 MACHINED WASHER	A31	IS:2016-1967	MOTS 057																																																																																																																																					
<table border="1"><thead><tr><th>ITEM NO.</th><th>DESCRIPTION</th><th>DATE</th><th>BY</th><th>REVISION</th><th>REMARKS</th></tr></thead><tbody><tr><td>1</td><td>ITEM NO. 29 TO 29 ADDED.</td><td>17/02/2000</td><td>1-08</td><td></td><td></td></tr><tr><td>2</td><td>NOTE 1 ADDED.</td><td>29/09/00</td><td>1-08</td><td></td><td></td></tr><tr><td>3</td><td>ITEM NO. 30 ADDED.</td><td></td><td></td><td></td><td></td></tr></tbody></table>													ITEM NO.	DESCRIPTION	DATE	BY	REVISION	REMARKS	1	ITEM NO. 29 TO 29 ADDED.	17/02/2000	1-08			2	NOTE 1 ADDED.	29/09/00	1-08			3	ITEM NO. 30 ADDED.																																																																																																								
ITEM NO.	DESCRIPTION	DATE	BY	REVISION	REMARKS																																																																																																																																			
1	ITEM NO. 29 TO 29 ADDED.	17/02/2000	1-08																																																																																																																																					
2	NOTE 1 ADDED.	29/09/00	1-08																																																																																																																																					
3	ITEM NO. 30 ADDED.																																																																																																																																							
<p>ENTERED</p> <p>Info</p> <p>26 SEP 2001</p> <p>SCANNED</p>																																																																																																																																								
<p>NOTE:-</p> <p>1. NS STANDS FOR NON-STANDARD HARDWARES. THESE SHOULD BE DISCOURAGED FOR FUTURE USE.</p>																																																																																																																																								
<table border="1"><thead><tr><th>ITEM NO.</th><th>DESCRIPTION</th><th>DATE</th><th>BY</th><th>REVISION</th><th>REMARKS</th></tr></thead><tbody><tr><td>1</td><td>STANDARDISED LIST OF WASHERS</td><td>17/02/2000</td><td>1-08</td><td></td><td></td></tr><tr><td>2</td><td>INDIAN RAILWAYS STANDARD</td><td>21/12/99</td><td></td><td></td><td></td></tr></tbody></table>													ITEM NO.	DESCRIPTION	DATE	BY	REVISION	REMARKS	1	STANDARDISED LIST OF WASHERS	17/02/2000	1-08			2	INDIAN RAILWAYS STANDARD	21/12/99																																																																																																													
ITEM NO.	DESCRIPTION	DATE	BY	REVISION	REMARKS																																																																																																																																			
1	STANDARDISED LIST OF WASHERS	17/02/2000	1-08																																																																																																																																					
2	INDIAN RAILWAYS STANDARD	21/12/99																																																																																																																																						

THIS IS A COMPUTER GENERATED DRAWING. ANY MANUAL ALTERATION SHALL AUTOMATICALLY RENDER IT INVALID.

FOR UNTOUCHED DIMENSIONS REFER M200008

DATE OF FIRST ISSUE 21/12/99

NOTE:-

1. Background : yellow green colour.
2. Lettering : Traffic red RAL 3020.
3. 3M LUMINOUS FILM 6900 OR EQUIVALENT.
4. 3M'S ADHESION PROMOTER 88A SHALL BE USED PRIOR TO PASTING OF GLOW TYPE STICKERS.
5. MINIMUM ADHESION FORCE SHALL BE 25 NEWTON ON THE BASE MATERIAL PASTED ON FRP/HPL SHEETS WITH GRAINY TEXTURE. TESTING SHALL BE DONE AS PER PARA 3.3.1 OF TL-91820.

[illegible]