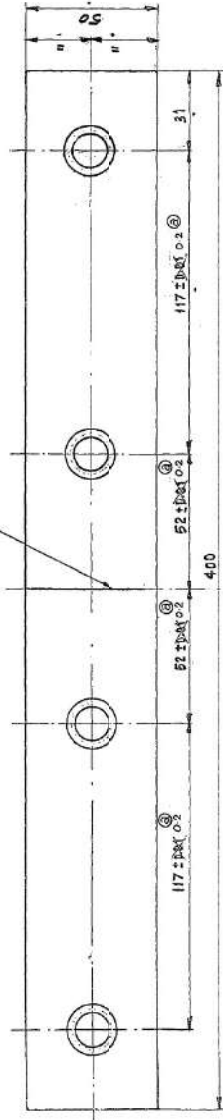
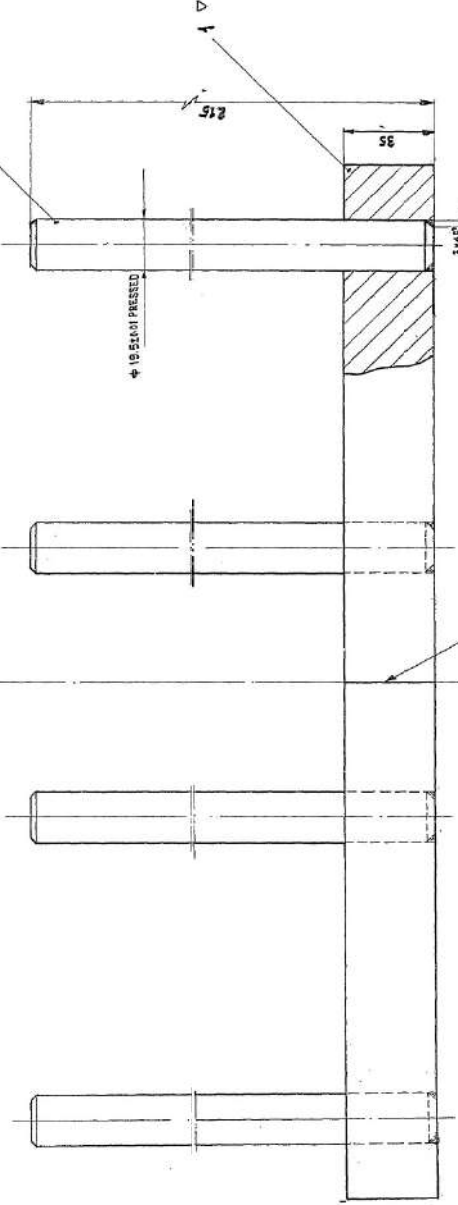


J&T/W-0712/05

CENTRE LINE TO BE MARKED



2



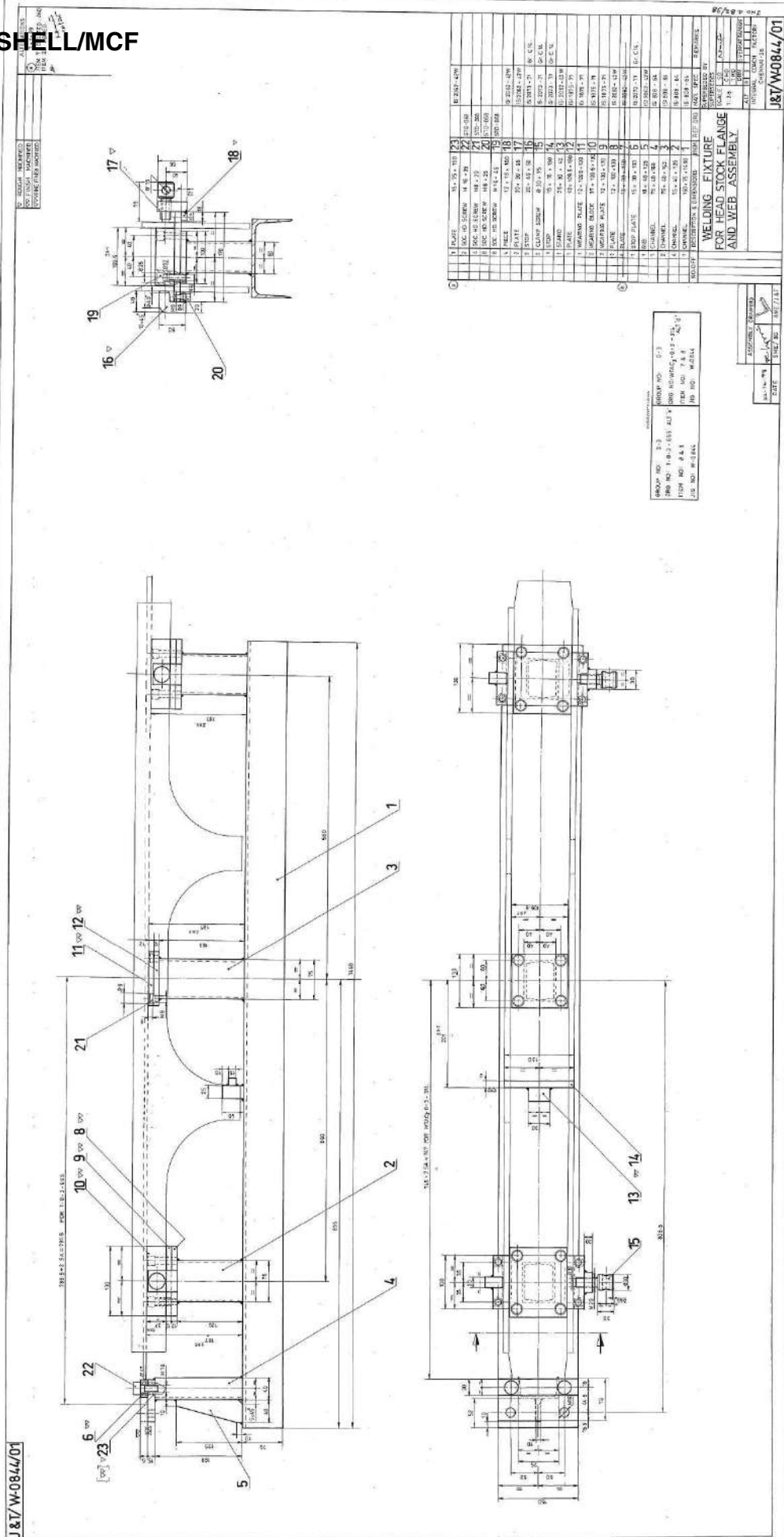
CENTRE LINE TO BE MARKED

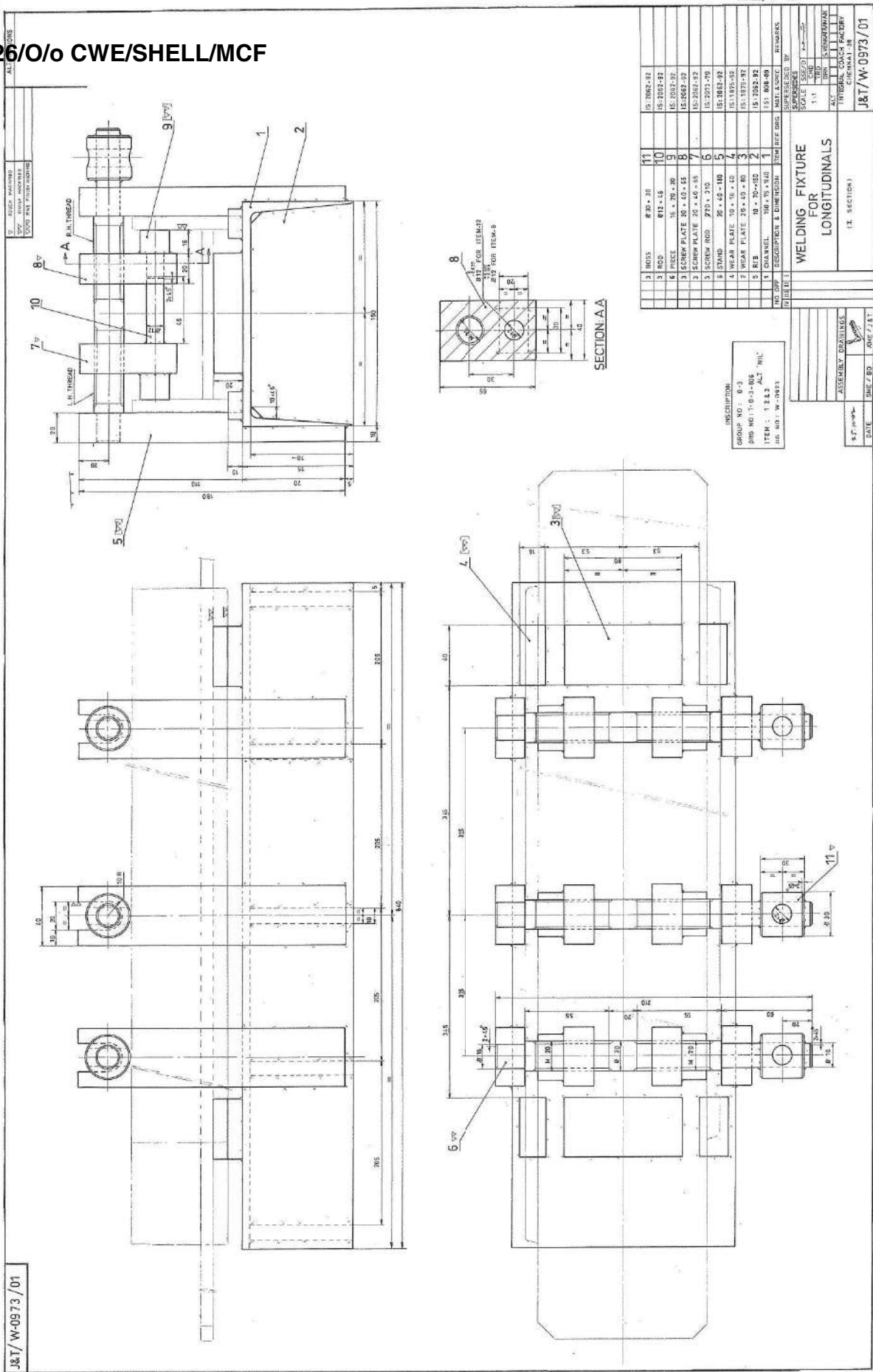
1	ROUGH MACHINED	2	CASE HARDENED
3	FINISH MACHINED	4	TOLEKAL
5	POUR FINE FINISH MACHINED	6	IN THE

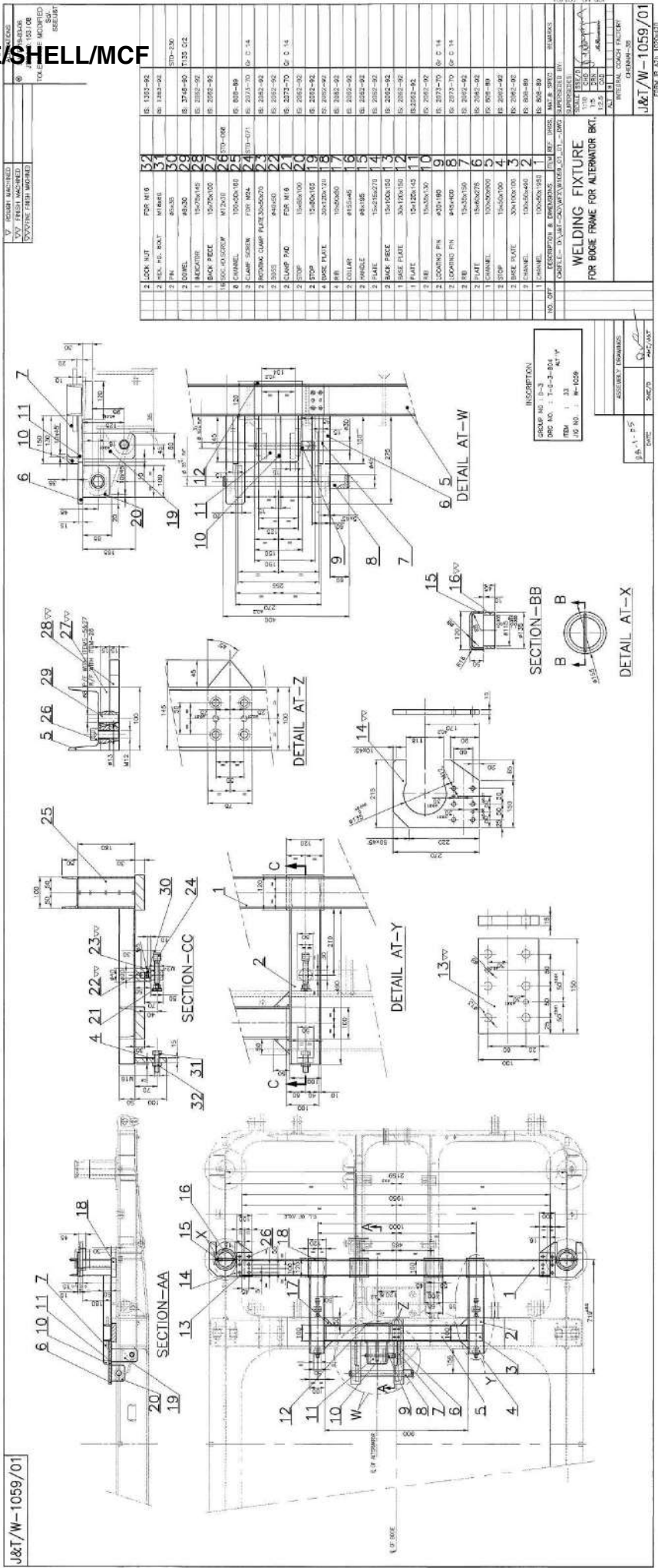
NOTE: TOLERANCE FOR ALL OTHER DIMENSIONS ± 0.15

1	LOCATING PIN	2	1512075-77	67.0/12
3	BLOCK	4	1512075-77	67.0/12
5	DESCRIPTIONS AND DIMENSIONS	6	1512075-77	67.0/12
7	WELDING JIG	8	FOR BOGIE SIDE FRAME	
9	WELDING JIG	10	FOR BOGIE SIDE FRAME	
11	WELDING JIG	12	FOR BOGIE SIDE FRAME	
13	WELDING JIG	14	FOR BOGIE SIDE FRAME	
15	WELDING JIG	16	FOR BOGIE SIDE FRAME	
17	WELDING JIG	18	FOR BOGIE SIDE FRAME	
19	WELDING JIG	20	FOR BOGIE SIDE FRAME	
21	WELDING JIG	22	FOR BOGIE SIDE FRAME	
23	WELDING JIG	24	FOR BOGIE SIDE FRAME	
25	WELDING JIG	26	FOR BOGIE SIDE FRAME	
27	WELDING JIG	28	FOR BOGIE SIDE FRAME	
29	WELDING JIG	30	FOR BOGIE SIDE FRAME	
31	WELDING JIG	32	FOR BOGIE SIDE FRAME	
33	WELDING JIG	34	FOR BOGIE SIDE FRAME	
35	WELDING JIG	36	FOR BOGIE SIDE FRAME	
37	WELDING JIG	38	FOR BOGIE SIDE FRAME	
39	WELDING JIG	40	FOR BOGIE SIDE FRAME	
41	WELDING JIG	42	FOR BOGIE SIDE FRAME	
43	WELDING JIG	44	FOR BOGIE SIDE FRAME	
45	WELDING JIG	46	FOR BOGIE SIDE FRAME	
47	WELDING JIG	48	FOR BOGIE SIDE FRAME	
49	WELDING JIG	50	FOR BOGIE SIDE FRAME	
51	WELDING JIG	52	FOR BOGIE SIDE FRAME	
53	WELDING JIG	54	FOR BOGIE SIDE FRAME	
55	WELDING JIG	56	FOR BOGIE SIDE FRAME	
57	WELDING JIG	58	FOR BOGIE SIDE FRAME	
59	WELDING JIG	60	FOR BOGIE SIDE FRAME	
61	WELDING JIG	62	FOR BOGIE SIDE FRAME	
63	WELDING JIG	64	FOR BOGIE SIDE FRAME	
65	WELDING JIG	66	FOR BOGIE SIDE FRAME	
67	WELDING JIG	68	FOR BOGIE SIDE FRAME	
69	WELDING JIG	70	FOR BOGIE SIDE FRAME	
71	WELDING JIG	72	FOR BOGIE SIDE FRAME	
73	WELDING JIG	74	FOR BOGIE SIDE FRAME	
75	WELDING JIG	76	FOR BOGIE SIDE FRAME	
77	WELDING JIG	78	FOR BOGIE SIDE FRAME	
79	WELDING JIG	80	FOR BOGIE SIDE FRAME	
81	WELDING JIG	82	FOR BOGIE SIDE FRAME	
83	WELDING JIG	84	FOR BOGIE SIDE FRAME	
85	WELDING JIG	86	FOR BOGIE SIDE FRAME	
87	WELDING JIG	88	FOR BOGIE SIDE FRAME	
89	WELDING JIG	90	FOR BOGIE SIDE FRAME	
91	WELDING JIG	92	FOR BOGIE SIDE FRAME	
93	WELDING JIG	94	FOR BOGIE SIDE FRAME	
95	WELDING JIG	96	FOR BOGIE SIDE FRAME	
97	WELDING JIG	98	FOR BOGIE SIDE FRAME	
99	WELDING JIG	100	FOR BOGIE SIDE FRAME	

J&T/W-0712/01	ASSEMBLY DRAWING
DATE	DATE

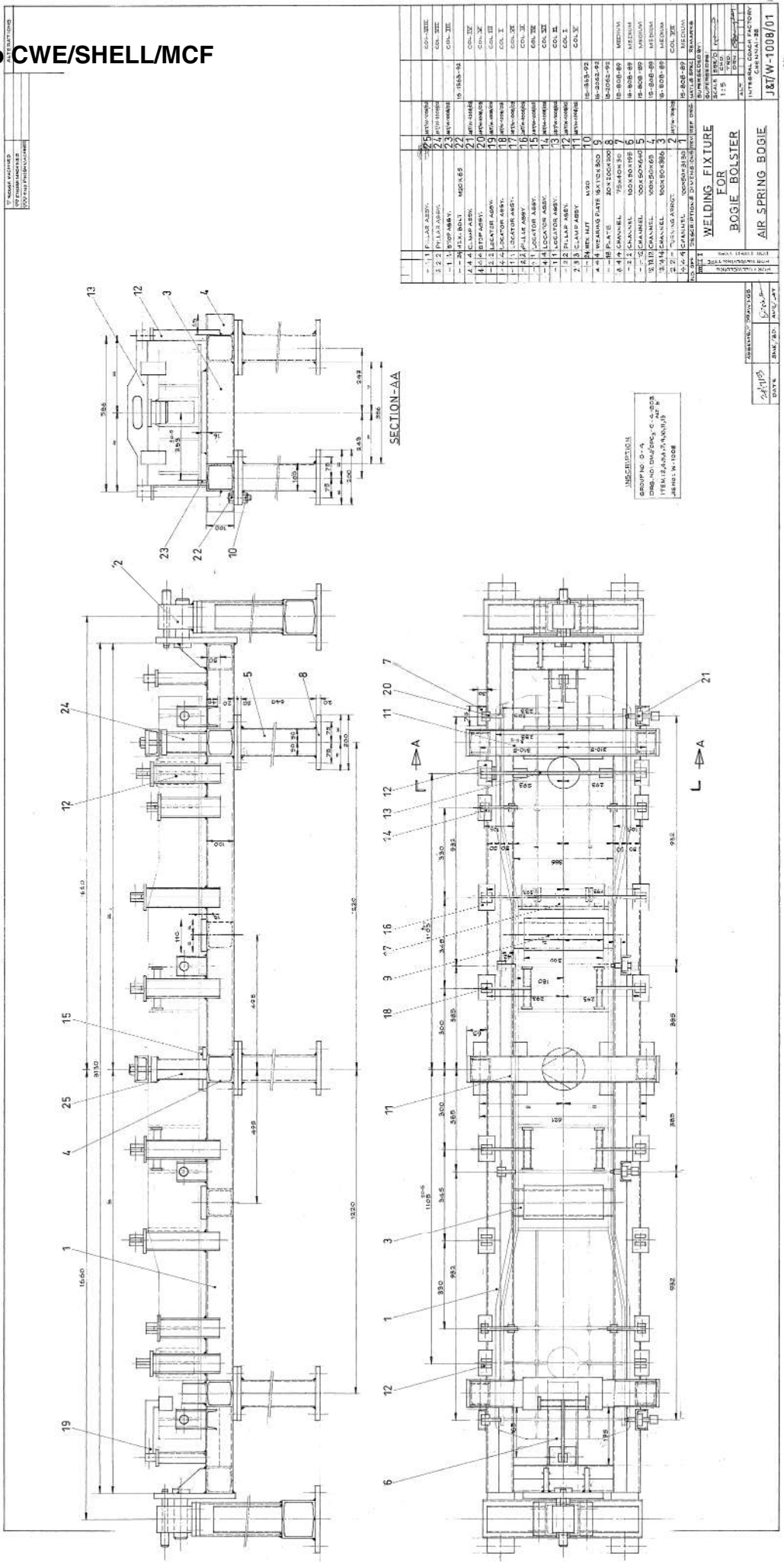




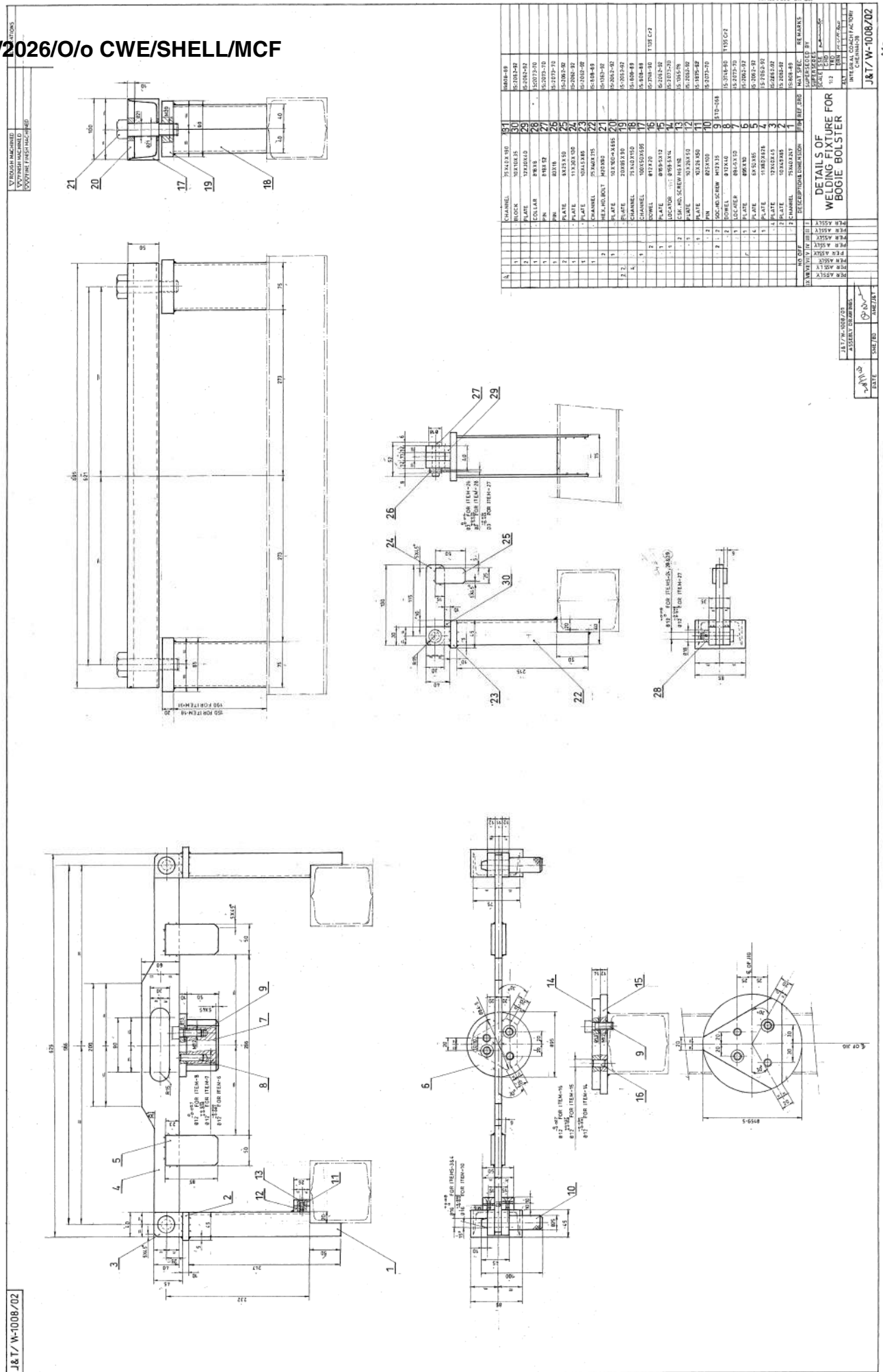




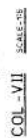




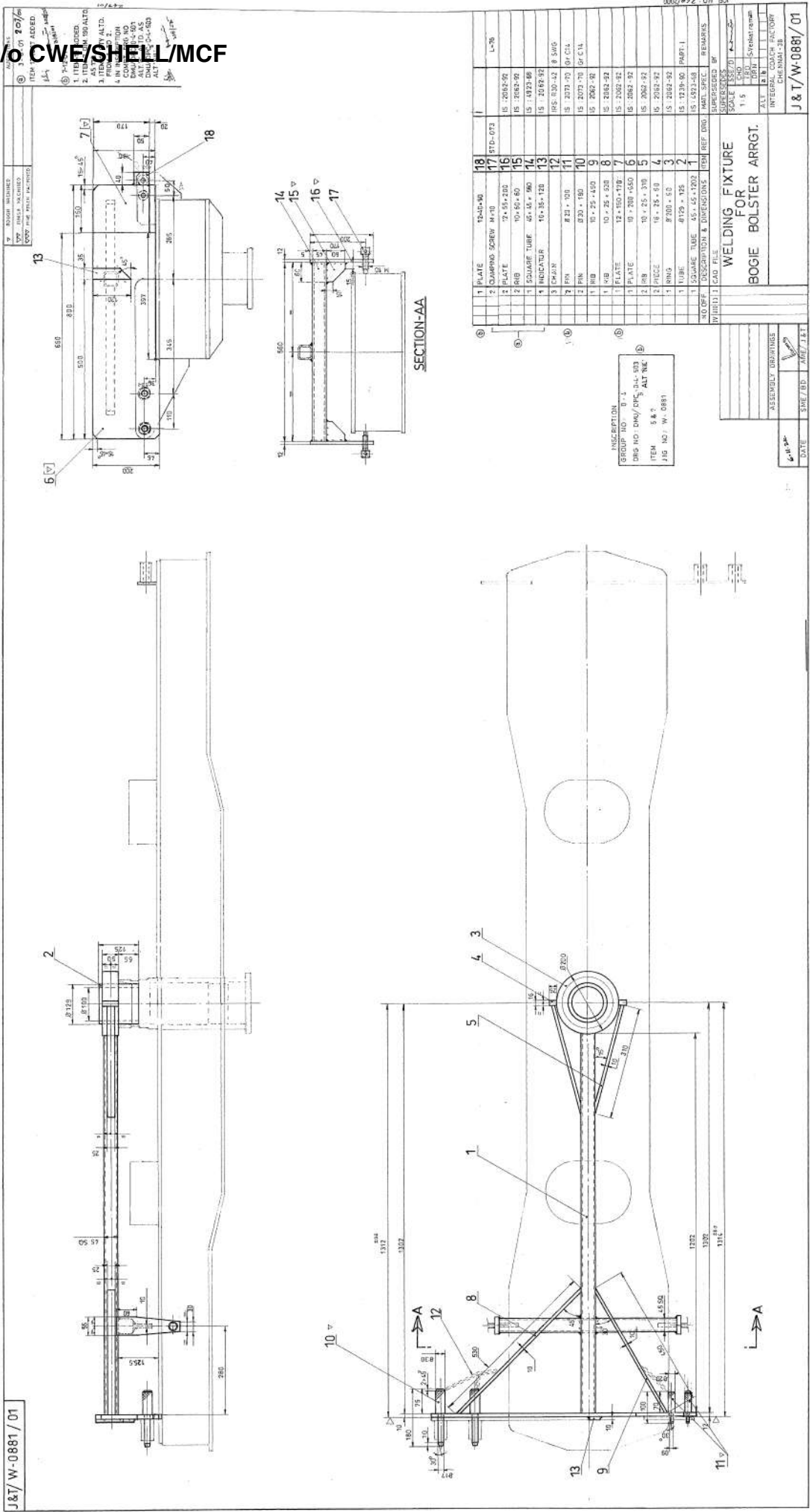




A1a

[illegible][illegible]





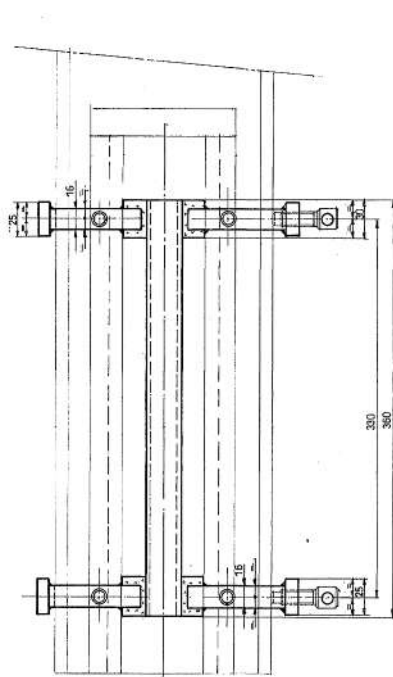
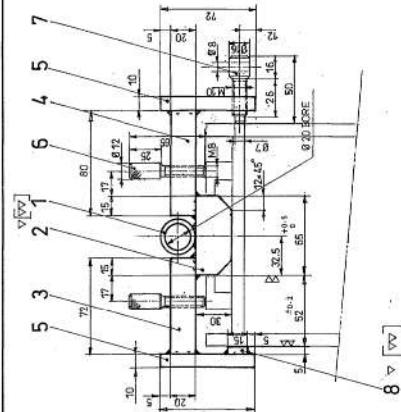
ATB



J&T/W-0972/01

TO: ROUGH MACHINED  
TO: FINISH MACHINED  
TO: FIRE PROOF MACHINE

ALTERATIONS



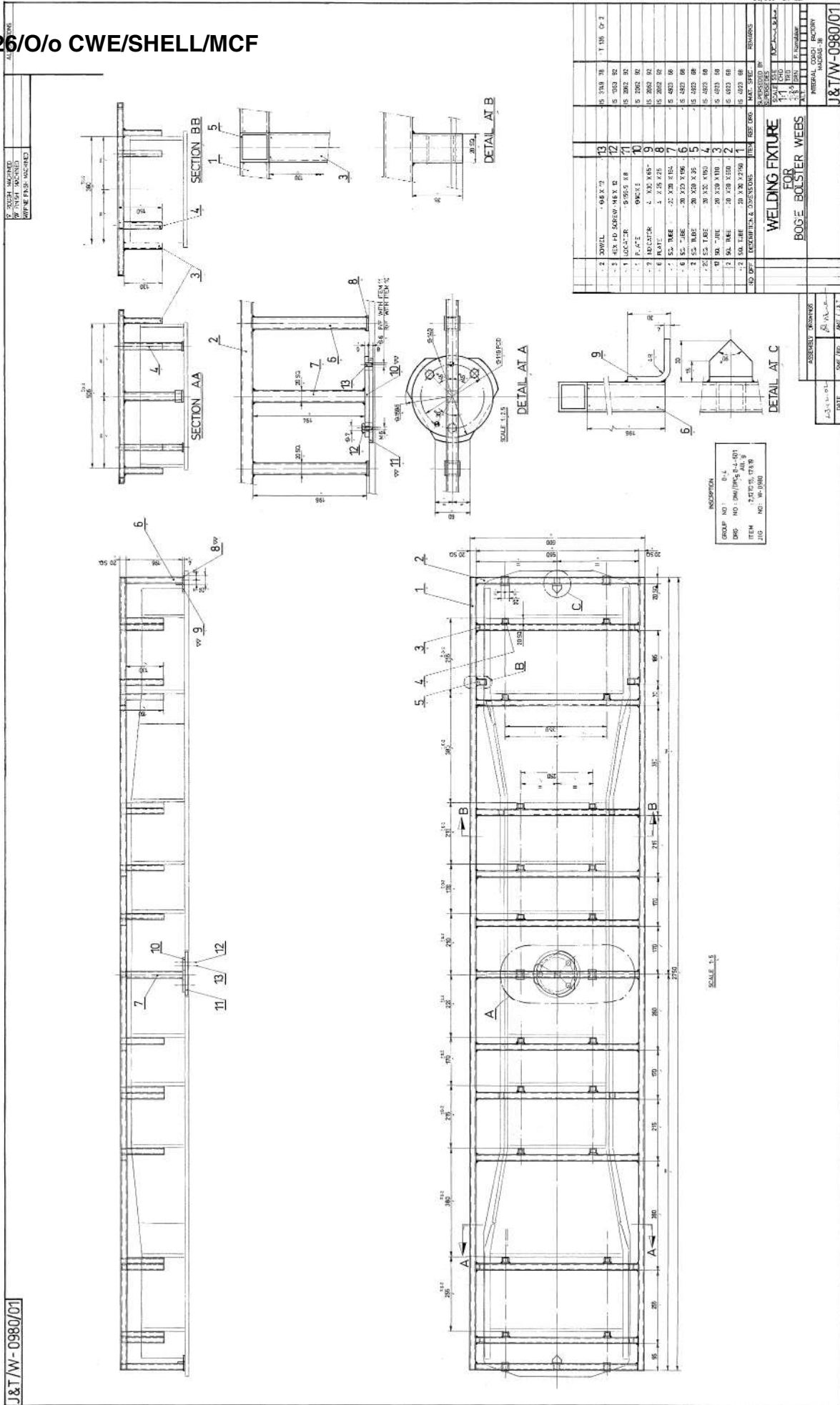
GROUP NO. : 0 - 4  
DRG NO. : DMJ/DPC-0-4-502  
ITEM : 1 & 2  
JIG NO. : W-0972

NO. OF.	DESCRIPTION & DIMENSION	ITEM	REF. DRG.	MAT. & SPEC.	REMARKS
2	STOP PLATE 5 x 15 x 75	8		IS: 2062-92	
2	CLAMP SCREW 8 x 16 x 50	7		IS: 2073-70 Gr. C 15	
4	CLAMP SCREW 8 x 12 x 65	6		IS: 2073-70 Gr. C 15	
4	PLATE 10 x 25 x 72	5		IS: 2062-92	
2	PLATE 16 x 20 x 60	4		IS: 2062-92	
2	PLATE 16 x 20 x 72	3		IS: 2062-92	
2	LOCATOR 30 x 30 x 65	2		IS: 2062-92	
1	PIPE 80mm 360	1		IS: 1298-90	

WELDING FIXTURE FOR  
GUIDE RAIL FOR BOGIE BOLSTER

DATE: 24/10/2026  
SHEET NO: 01  
J&T

J&T/W-0972/01



J&T/W-0980/01

GROUP NO: 01-4  
DWG NO: 1961/19-01-4-001  
ITEM: 1, 2, 3, 4, 5, 6, 7, 8, 9, 10, 11, 12, 13  
J&T/W-0980

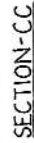
SCALE: 1:1

WELDING FIXTURE FOR BOGIE BOLSTER WEBS

DATE: 10/10/2019  
DWG NO: 1961/19-01-4-001  
J&T/W-0980

J&T/W-0980/01



[illegible]

WELDING FIXTURE FOR  
RIB ARRGT  
(FOR BOGIE BOLSTER ARRGT)

8/10/03		ASSEMBLY DRAWINGS
DATE	DATE/BD	NAME/IST

21