

J&T/W-0084/01

SECTION-AA

SECTION-BB

SECTION-CC

WELDING JIG
FOR BOGIE FRAME ASSEMBLY
1ST OPERATION

WELDING JIG
FOR BOGIE FRAME ASSEMBLY
1ST OPERATION

WELDING JIG
FOR BOGIE FRAME ASSEMBLY
1ST OPERATION

WELDING JIG
FOR BOGIE FRAME ASSEMBLY
1ST OPERATION

WELDING JIG
FOR BOGIE FRAME ASSEMBLY
1ST OPERATION

WELDING JIG
FOR BOGIE FRAME ASSEMBLY
1ST OPERATION

WELDING JIG
FOR BOGIE FRAME ASSEMBLY
1ST OPERATION

| | |
|----|-----------------|
| 77 | ROUGH MACHINED |
| 78 | FINISH MACHINED |
| 79 | FINISH MACHINED |

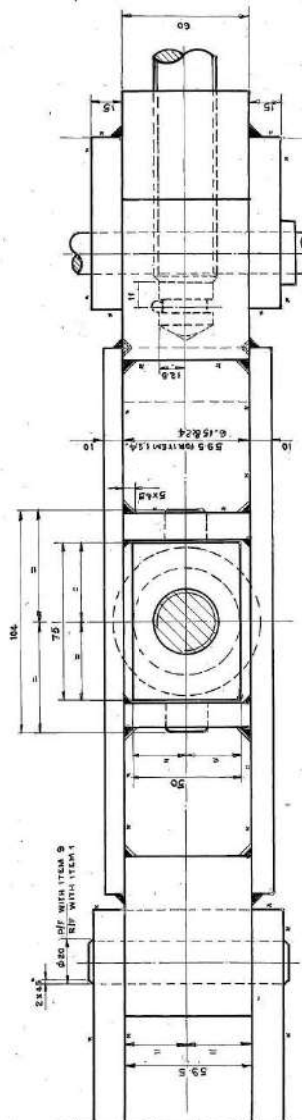
④ -05-34



| | | | | | |
|-----|-----|-----------|---------------|----|------------|
| 1 | 1 | 9-LATE | 12.189.50(12) | 24 | 15.104.41M |
| 2 | 2 | SUPPORT | 10.100.22(2) | 22 | 15.106.42M |
| 3 | 3 | CLAMP-PAD | 10.100.22(2) | 20 | 15.106.43M |
| 4 | 4 | SUPPORT | 18.000.50(5) | 18 | 15.106.44M |
| 5 | 5 | CLAMP-PAD | 18.000.50(5) | 16 | 15.106.45M |
| 6 | 6 | CLAMP-PAD | 15.000.50(5) | 14 | 15.106.46M |
| 7 | 7 | CLAMP-PAD | 15.000.50(5) | 12 | 15.106.47M |
| 8 | 8 | CLAMP-PAD | 15.000.50(5) | 10 | 15.106.48M |
| 9 | 9 | CLAMP-PAD | 15.000.50(5) | 8 | 15.106.49M |
| 10 | 10 | CLAMP-PAD | 15.000.50(5) | 6 | 15.106.50M |
| 11 | 11 | CLAMP-PAD | 15.000.50(5) | 4 | 15.106.51M |
| 12 | 12 | CLAMP-PAD | 15.000.50(5) | 2 | 15.106.52M |
| 13 | 13 | CLAMP-PAD | 15.000.50(5) | 1 | 15.106.53M |
| 14 | 14 | CLAMP-PAD | 15.000.50(5) | 1 | 15.106.54M |
| 15 | 15 | CLAMP-PAD | 15.000.50(5) | 1 | 15.106.55M |
| 16 | 16 | CLAMP-PAD | 15.000.50(5) | 1 | 15.106.56M |
| 17 | 17 | CLAMP-PAD | 15.000.50(5) | 1 | 15.106.57M |
| 18 | 18 | CLAMP-PAD | 15.000.50(5) | 1 | 15.106.58M |
| 19 | 19 | CLAMP-PAD | 15.000.50(5) | 1 | 15.106.59M |
| 20 | 20 | CLAMP-PAD | 15.000.50(5) | 1 | 15.106.60M |
| 21 | 21 | CLAMP-PAD | 15.000.50(5) | 1 | 15.106.61M |
| 22 | 22 | CLAMP-PAD | 15.000.50(5) | 1 | 15.106.62M |
| 23 | 23 | CLAMP-PAD | 15.000.50(5) | 1 | 15.106.63M |
| 24 | 24 | CLAMP-PAD | 15.000.50(5) | 1 | 15.106.64M |
| 25 | 25 | CLAMP-PAD | 15.000.50(5) | 1 | 15.106.65M |
| 26 | 26 | CLAMP-PAD | 15.000.50(5) | 1 | 15.106.66M |
| 27 | 27 | CLAMP-PAD | 15.000.50(5) | 1 | 15.106.67M |
| 28 | 28 | CLAMP-PAD | 15.000.50(5) | 1 | 15.106.68M |
| 29 | 29 | CLAMP-PAD | 15.000.50(5) | 1 | 15.106.69M |
| 30 | 30 | CLAMP-PAD | 15.000.50(5) | 1 | 15.106.70M |
| 31 | 31 | CLAMP-PAD | 15.000.50(5) | 1 | 15.106.71M |
| 32 | 32 | CLAMP-PAD | 15.000.50(5) | 1 | 15.106.72M |
| 33 | 33 | CLAMP-PAD | 15.000.50(5) | 1 | 15.106.73M |
| 34 | 34 | CLAMP-PAD | 15.000.50(5) | 1 | 15.106.74M |
| 35 | 35 | CLAMP-PAD | 15.000.50(5) | 1 | 15.106.75M |
| 36 | 36 | CLAMP-PAD | 15.000.50(5) | 1 | 15.106.76M |
| 37 | 37 | CLAMP-PAD | 15.000.50(5) | 1 | 15.106.77M |
| 38 | 38 | CLAMP-PAD | 15.000.50(5) | 1 | 15.106.78M |
| 39 | 39 | CLAMP-PAD | 15.000.50(5) | 1 | 15.106.79M |
| 40 | 40 | CLAMP-PAD | 15.000.50(5) | 1 | 15.106.80M |
| 41 | 41 | CLAMP-PAD | 15.000.50(5) | 1 | 15.106.81M |
| 42 | 42 | CLAMP-PAD | 15.000.50(5) | 1 | 15.106.82M |
| 43 | 43 | CLAMP-PAD | 15.000.50(5) | 1 | 15.106.83M |
| 44 | 44 | CLAMP-PAD | 15.000.50(5) | 1 | 15.106.84M |
| 45 | 45 | CLAMP-PAD | 15.000.50(5) | 1 | 15.106.85M |
| 46 | 46 | CLAMP-PAD | 15.000.50(5) | 1 | 15.106.86M |
| 47 | 47 | CLAMP-PAD | 15.000.50(5) | 1 | 15.106.87M |
| 48 | 48 | CLAMP-PAD | 15.000.50(5) | 1 | 15.106.88M |
| 49 | 49 | CLAMP-PAD | 15.000.50(5) | 1 | 15.106.89M |
| 50 | 50 | CLAMP-PAD | 15.000.50(5) | 1 | 15.106.90M |
| 51 | 51 | CLAMP-PAD | 15.000.50(5) | 1 | 15.106.91M |
| 52 | 52 | CLAMP-PAD | 15.000.50(5) | 1 | 15.106.92M |
| 53 | 53 | CLAMP-PAD | 15.000.50(5) | 1 | 15.106.93M |
| 54 | 54 | CLAMP-PAD | 15.000.50(5) | 1 | 15.106.94M |
| 55 | 55 | CLAMP-PAD | 15.000.50(5) | 1 | 15.106.95M |
| 56 | 56 | CLAMP-PAD | 15.000.50(5) | 1 | 15.106.96M |
| 57 | 57 | CLAMP-PAD | 15.000.50(5) | 1 | 15.106.97M |
| 58 | 58 | CLAMP-PAD | 15.000.50(5) | 1 | 15.106.98M |
| 59 | 59 | CLAMP-PAD | 15.000.50(5) | 1 | 15.106.99M |
| 60 | 60 | CLAMP-PAD | 15.000.50(5) | 1 | 15.107.00M |
| 61 | 61 | CLAMP-PAD | 15.000.50(5) | 1 | 15.107.01M |
| 62 | 62 | CLAMP-PAD | 15.000.50(5) | 1 | 15.107.02M |
| 63 | 63 | CLAMP-PAD | 15.000.50(5) | 1 | 15.107.03M |
| 64 | 64 | CLAMP-PAD | 15.000.50(5) | 1 | 15.107.04M |
| 65 | 65 | CLAMP-PAD | 15.000.50(5) | 1 | 15.107.05M |
| 66 | 66 | CLAMP-PAD | 15.000.50(5) | 1 | 15.107.06M |
| 67 | 67 | CLAMP-PAD | 15.000.50(5) | 1 | 15.107.07M |
| 68 | 68 | CLAMP-PAD | 15.000.50(5) | 1 | 15.107.08M |
| 69 | 69 | CLAMP-PAD | 15.000.50(5) | 1 | 15.107.09M |
| 70 | 70 | CLAMP-PAD | 15.000.50(5) | 1 | 15.107.10M |
| 71 | 71 | CLAMP-PAD | 15.000.50(5) | 1 | 15.107.11M |
| 72 | 72 | CLAMP-PAD | 15.000.50(5) | 1 | 15.107.12M |
| 73 | 73 | CLAMP-PAD | 15.000.50(5) | 1 | 15.107.13M |
| 74 | 74 | CLAMP-PAD | 15.000.50(5) | 1 | 15.107.14M |
| 75 | 75 | CLAMP-PAD | 15.000.50(5) | 1 | 15.107.15M |
| 76 | 76 | CLAMP-PAD | 15.000.50(5) | 1 | 15.107.16M |
| 77 | 77 | CLAMP-PAD | 15.000.50(5) | 1 | 15.107.17M |
| 78 | 78 | CLAMP-PAD | 15.000.50(5) | 1 | 15.107.18M |
| 79 | 79 | CLAMP-PAD | 15.000.50(5) | 1 | 15.107.19M |
| 80 | 80 | CLAMP-PAD | 15.000.50(5) | 1 | 15.107.20M |
| 81 | 81 | CLAMP-PAD | 15.000.50(5) | 1 | 15.107.21M |
| 82 | 82 | CLAMP-PAD | 15.000.50(5) | 1 | 15.107.22M |
| 83 | 83 | CLAMP-PAD | 15.000.50(5) | 1 | 15.107.23M |
| 84 | 84 | CLAMP-PAD | 15.000.50(5) | 1 | 15.107.24M |
| 85 | 85 | CLAMP-PAD | 15.000.50(5) | 1 | 15.107.25M |
| 86 | 86 | CLAMP-PAD | 15.000.50(5) | 1 | 15.107.26M |
| 87 | 87 | CLAMP-PAD | 15.000.50(5) | 1 | 15.107.27M |
| 88 | 88 | CLAMP-PAD | 15.000.50(5) | 1 | 15.107.28M |
| 89 | 89 | CLAMP-PAD | 15.000.50(5) | 1 | 15.107.29M |
| 90 | 90 | CLAMP-PAD | 15.000.50(5) | 1 | 15.107.30M |
| 91 | 91 | CLAMP-PAD | 15.000.50(5) | 1 | 15.107.31M |
| 92 | 92 | CLAMP-PAD | 15.000.50(5) | 1 | 15.107.32M |
| 93 | 93 | CLAMP-PAD | 15.000.50(5) | 1 | 15.107.33M |
| 94 | 94 | CLAMP-PAD | 15.000.50(5) | 1 | 15.107.34M |
| 95 | 95 | CLAMP-PAD | 15.000.50(5) | 1 | 15.107.35M |
| 96 | 96 | CLAMP-PAD | 15.000.50(5) | 1 | 15.107.36M |
| 97 | 97 | CLAMP-PAD | 15.000.50(5) | 1 | 15.107.37M |
| 98 | 98 | CLAMP-PAD | 15.000.50(5) | 1 | 15.107.38M |
| 99 | 99 | CLAMP-PAD | 15.000.50(5) | 1 | 15.107.39M |
| 100 | 100 | CLAMP-PAD | 15.000.50(5) | 1 | 15.107.40M |
| 101 | 101 | CLAMP-PAD | 15.000.50(5) | 1 | 15.107.41M |
| 102 | 102 | CLAMP-PAD | 15.000.50(5) | 1 | 15.107.42M |
| 103 | 103 | CLAMP-PAD | 15.000.50(5) | 1 | 15.107.43M |
| 104 | 104 | CLAMP-PAD | 15.000.50(5) | 1 | 15.107.44M |
| 105 | 105 | CLAMP-PAD | 15.000.50(5) | 1 | 15.107.45M |
| 106 | 106 | CLAMP-PAD | 15.000.50(5) | 1 | 15.107.46M |
| 107 | 107 | CLAMP-PAD | 15.000.50(5) | 1 | 15.107.47M |
| 108 | 108 | CLAMP-PAD | 15.000.50(5) | 1 | 15.107.48M |
| 109 | 109 | CLAMP-PAD | 15.000.50(5) | 1 | 15.107.49M |
| 110 | 110 | CLAMP-PAD | 15.000.50(5) | 1 | 15.107.50M |
| 111 | 111 | CLAMP-PAD | 15.000.50(5) | 1 | 15.107.51M |
| 112 | 112 | CLAMP-PAD | 15.000.50(5) | 1 | 15.107.52M |
| 113 | 113 | CLAMP-PAD | 15.000.50(5) | 1 | 15.107.53M |
| 114 | 114 | CLAMP-PAD | 15.000.50(5) | 1 | 15.107.54M |
| 115 | 115 | CLAMP-PAD | 15.000.50(5) | 1 | 15.107.55M |
| 116 | 116 | CLAMP-PAD | 15.000.50(5) | 1 | 15.107.56M |
| 117 | 117 | CLAMP-PAD | 15.000.50(5) | 1 | 15.107.57M |
| 118 | 118 | CLAMP-PAD | 15.000.50(5) | 1 | 15.107.58M |
| 119 | 119 | CLAMP-PAD | 15.000.50(5) | 1 | 15.107.59M |
| 120 | 120 | CLAMP-PAD | 15.000.50(5) | 1 | 15.107.60M |
| 121 | 121 | CLAMP-PAD | 15.000.50(5) | 1 | 15.107.61M |
| 122 | 122 | CLAMP-PAD | 15.000.50(5) | 1 | 15.107.62M |
| 123 | 123 | CLAMP-PAD | 15.000.50(5) | 1 | 15.107.63M |
| 124 | 124 | CLAMP-PAD | 15.000.50(5) | 1 | 15.107.64M |
| 125 | 125 | CLAMP-PAD | 15.000.50(5) | 1 | 15.107.65M |
| 126 | 126 | CLAMP-PAD | 15.000.50(5) | 1 | 15.107.66M |
| 127 | 127 | CLAMP-PAD | 15.000.50(5) | 1 | 15.107.67M |
| 128 | 128 | CLAMP-PAD | 15.000.50(5) | 1 | 15.107.68M |
| 129 | 129 | CLAMP-PAD | 15.000.50(5) | 1 | 15.107.69M |
| 130 | 130 | CLAMP-PAD | 15.000.50(5) | 1 | 15.107.70M |
| 131 | 131 | CLAMP-PAD | 15.000.50(5) | 1 | 15.107.71M |
| 132 | 132 | CLAMP-PAD | 15.000.50(5) | 1 | 15.107.72M |
| 133 | 133 | CLAMP-PAD | 15.000.50(5) | 1 | 15.107.73M |
| 134 | 134 | CLAMP-PAD | 15.000.50(5) | 1 | 15.107.74M |
| 135 | 135 | CLAMP-PAD | 15.000.50(5) | 1 | 15.107.75M |
| 136 | 136 | CLAMP-PAD | 15.000.50(5) | 1 | 15.107.76M |
| 137 | 137 | CLAMP-PAD | 15.000.50(5) | 1 | 15.107.77M |
| 138 | 138 | CLAMP-PAD | 15.000.50(5) | 1 | 15.107.78M |
| 139 | 139 | CLAMP-PAD | 15.000.50(5) | 1 | 15.107.79M |
| 140 | 140 | CLAMP-PAD | 15.000.50(5) | 1 | 15.107.80M |
| 141 | 141 | CLAMP-PAD | 15.000.50(5) | 1 | 15.107.81M |
| 142 | 142 | CLAMP-PAD | 15.000.50(5) | 1 | 15.107.82M |
| 143 | 143 | CLAMP-PAD | 15.000.50(5) | 1 | 15.107.83M |
| 144 | 144 | CLAMP-PAD | 15.000.50(5) | 1 | 15.107.84M |
| 145 | 145 | CLAMP-PAD | 15.000.50(5) | 1 | 15.107.85M |
| 146 | 146 | CLAMP-PAD | 15.000.50(5) | 1 | 15.107.86M |
| 147 | 147 | CLAMP-PAD | 15.000.50(5) | 1 | 15.107.87M |
| 148 | 148 | CLAMP-PAD | 15.000.50(5) | 1 | 15.107.88M |
| 149 | 149 | CLAMP-PAD | 15.000.50(5) | 1 | 15.107.89M |
| 150 | 150 | CLAMP-PAD | 15.000.50(5) | 1 | 15.107.90M |
| 151 | 151 | CLAMP-PAD | 15.000.50(5) | 1 | 15.107.91M |
| 152 | 152 | CLAMP-PAD | 15.000.50(5) | 1 | 15.107.92M |
| 153 | 153 | CLAMP-PAD | 15.000.50(5) | 1 | 15.107.93M |
| 154 | 154 | CLAMP-PAD | 15.000.50(5) | 1 | 15.107.94M |
| 155 | 155 | CLAMP-PAD | 15.000.50(5) | 1 | 15.107.95M |
| 156 | 156 | CLAMP-PAD | 15.000.50(5) | 1 | 15.107.96M |
| 157 | 157 | CLAMP-PAD | 15.000.50(5) | 1 | 15.107.97M |
| 158 | 158 | CLAMP-PAD | 15.000.50(5) | 1 | 15.107.98M |
| 159 | 159 | CLAMP-PAD | 15.000.50(5) | 1 | 15.107.99M |
| 160 | 160 | CLAMP-PAD | 15.000.50(5) | 1 | 15.108.00M |
| 161 | 161 | CLAMP-PAD | 15.000.50(5) | 1 | 15.108.01M |
| 162 | 162 | CLAMP-PAD | 15.000.50(5) | 1 | 15.108.02M |
| 163 | 163 | CLAMP-PAD | 15.000.50(5) | 1 | 15.108.03M |
| 164 | 164 | CLAMP-PAD | 15.000.50(5) | 1 | 15.108.04M |
| 165 | 165 | CLAMP-PAD | 15.000.50(5) | 1 | 15.108.05M |
| 166 | 166 | CLAMP-PAD | 15.000.50(5) | 1 | 15.108.06M |
| 167 | 167 | CLAMP-PAD | 15.000.50(5) | 1 | 15.108.07M |
| 168 | 168 | CLAMP-PAD | 15.000.50(5) | 1 | 15.108.08M |
| 169 | 169 | CLAMP-PAD | 15.000.50(5) | 1 | 15.108.09M |
| 170 | 170 | CLAMP-PAD | 15.000.50(5) | 1 | 15.108.10M |
| 171 | 171 | CLAMP-PAD | 15.000.50(5) | 1 | 15.108.11M |
| 172 | 172 | CLAMP-PAD | 15.000.50(5) | 1 | 15.108.12M |
| 173 | 173 | CLAMP-PAD | 15.000.50(5) | 1 | 15.108.13M |
| 174 | 174 | CLAMP-PAD | 15.000.50(5) | 1 | 15.108.14M |
| 175 | 175 | CLAMP-PAD | 15.000.50(5) | 1 | 15.108.15M |
| 176 | 176 | CLAMP-PAD | 15.000.50(5) | 1 | 15.108.16M |
| 177 | 177 | CLAMP-PAD | 15.000.50(5) | 1 | 15.108.17M |
| 178 | 178 | CLAMP-PAD | 15.000.50(5) | 1 | 15.108.18M |
| 179 | 179 | CLAMP-PAD | 15.000.50(5) | 1 | 15.108.19M |
| 180 | 180 | CLAMP-PAD | 15.000.50(5) | 1 | 15.108.20M |
| 181 | 181 | CLAMP-PAD | 15.000.50(5) | 1 | 15.108.21M |
| 182 | 182 | CLAMP-PAD | 15.000.50(5) | 1 | 15.108.22M |
| 183 | 183 | CLAMP-PAD | 15.000.50(5) | 1 | 15.108.23M |
| 184 | 184 | CLAMP-PAD | 15.000.50(5) | 1 | 15.108.24M |
| 185 | 185 | CLAMP-PAD | 15.000.50(5) | 1 | 15.108.25M |
| 186 | 186 | CLAMP-PAD | 15.000.50(5) | 1 | 15.108.26M |
| 187 | 187 | CLAMP-PAD | 15.000.50(5) | 1 | 15.108.27M |
| 188 | 188 | CLAMP-PAD | 15.000.50(5) | 1 | 15.108.28M |
| 189 | 189 | CLAMP-PAD | 15.000.50(5) | 1 | 15.108.29M |
| 190 | 190 | CLAMP-PAD | 15.000.50(5) | 1 | 15.108.30M |
| 191 | 191 | CLAMP-PAD | 15.000.50(5) | 1 | 15.10 |

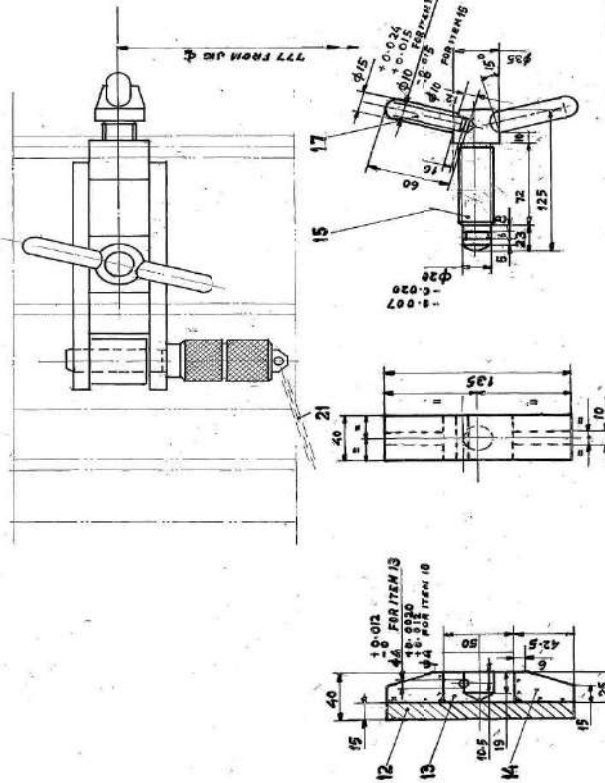
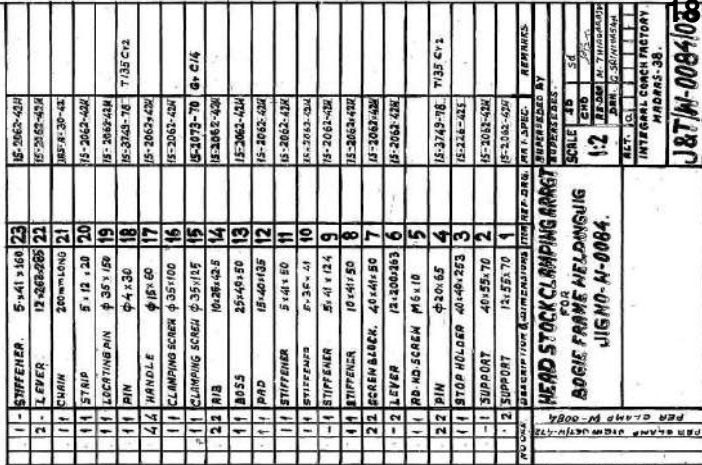
SIDE FRAME CLAMPING
ARRGT.
FOR BOGIE FRAME WELDING JIG

| | |
|-------------------|--------------------|
| J&J/W-0472/01 | |
| J&X/CFM-083/01 | |
| J&T/W-033B/01 | |
| J&T/W-0084/01 | |
| ASSEMBLY DRAWINGS | <i>[Signature]</i> |
| NAME / NO. | DATE / INT. |



| | | | |
|------|----------|---------|-------------|
| DATE | 10/10/10 | TIME | 10:00 |
| NAME | John Doe | ADDRESS | 123 Main St |
| CITY | New York | STATE | NY |
| ZIP | 10001 | COUNTRY | USA |

| | |
|-----|----------------------|
| 7 | ROUGH MACHINED |
| 77 | FINISH MACHINED |
| 777 | FINE FINISH MACHINED |



Technical drawing of a mechanical assembly showing two views: a side elevation and a top view.

Side View Dimensions:

- Total length: 150
- Distance from left face to center of hole: 70
- Hole diameter: $\phi 51.5$
- Flange thickness: 12
- Radius of fillet: R18
- Top surface radius: R5.3
- Bottom surface radius: R2
- Threaded section diameter: $\phi 28$
- Thread specification: M27 x 2-6g/LI

Top View Dimensions:

- Outer diameter: $\phi 76$
- Inner diameter: $\phi 35$
- Central hole diameter: $\phi 5$

Callouts:

- 19 points to the central hole in the top view.
- 20 points to the threaded section in the side view.

Assembly Information:

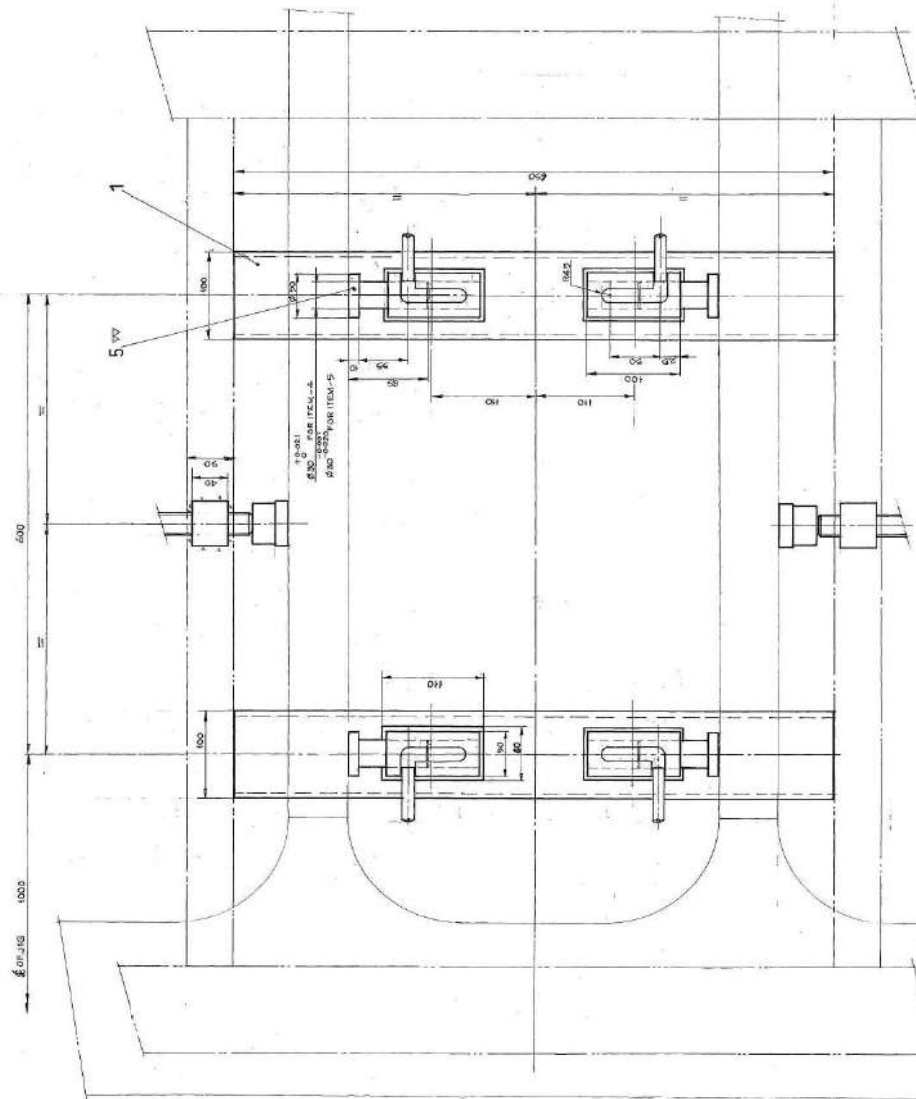
| DATE | SHEET | AME/JAT |
|------|-------|---------|
| | | |
| | | |
| | | |
| | | |
| | | |
| | | |
| | | |
| | | |
| | | |

Part Identification:

| | |
|-------------|--------|
| MATERIAL | 304 SS |
| DRAWN BY | JAT |
| CHECKED BY | AME |
| APPROVED BY | |
| DESIGNED BY | |
| DATE | |

Notes:

- ALL DIMENSIONS ARE IN MM UNLESS OTHERWISE SPECIFIED.
- FINISH ALL SURFACES TO RA 3.2 UNLESS OTHERWISE SPECIFIED.
- THREADS TO BE HANDED TO M27 X 2-6G/LI.
- USE ISO STANDARD TOLERANCES.

[illegible]

LONGITUDINAL STOP
ARRGT.

ARRGT.

**MINOT,
MODIFIED)**

ST/W-0084/01

EDWARD A. SAVANOS

| | |
|------|-------|
| DATE | 08/24 |
| TIME | |

DATE _____

101

1

1

1

1

1

1

1

1

1

1

1

1

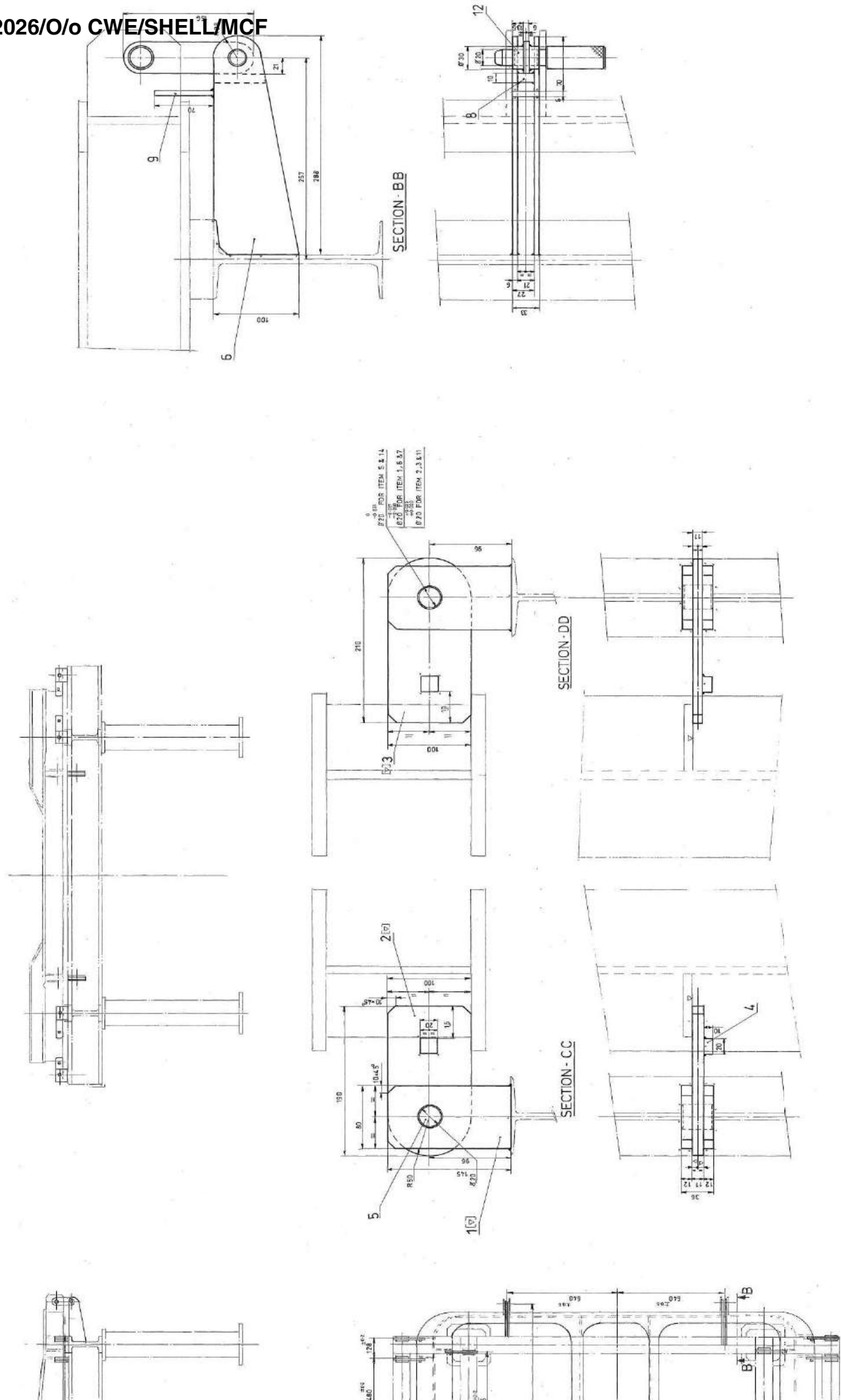
1

1

1

1

1





| | | |
|------|------------------------|--------------------|
| | SAC/PN-0286,011 | |
| | ASSIGNMENT DEDUCTIBLES | |
| | | <i>[Signature]</i> |
| | SAC/D | PME/L&T |
| DATE | 10/1/00 | |

DETAIL
FOR WELDING FIXTURE
FOR BOGIE FRAME ASSY.

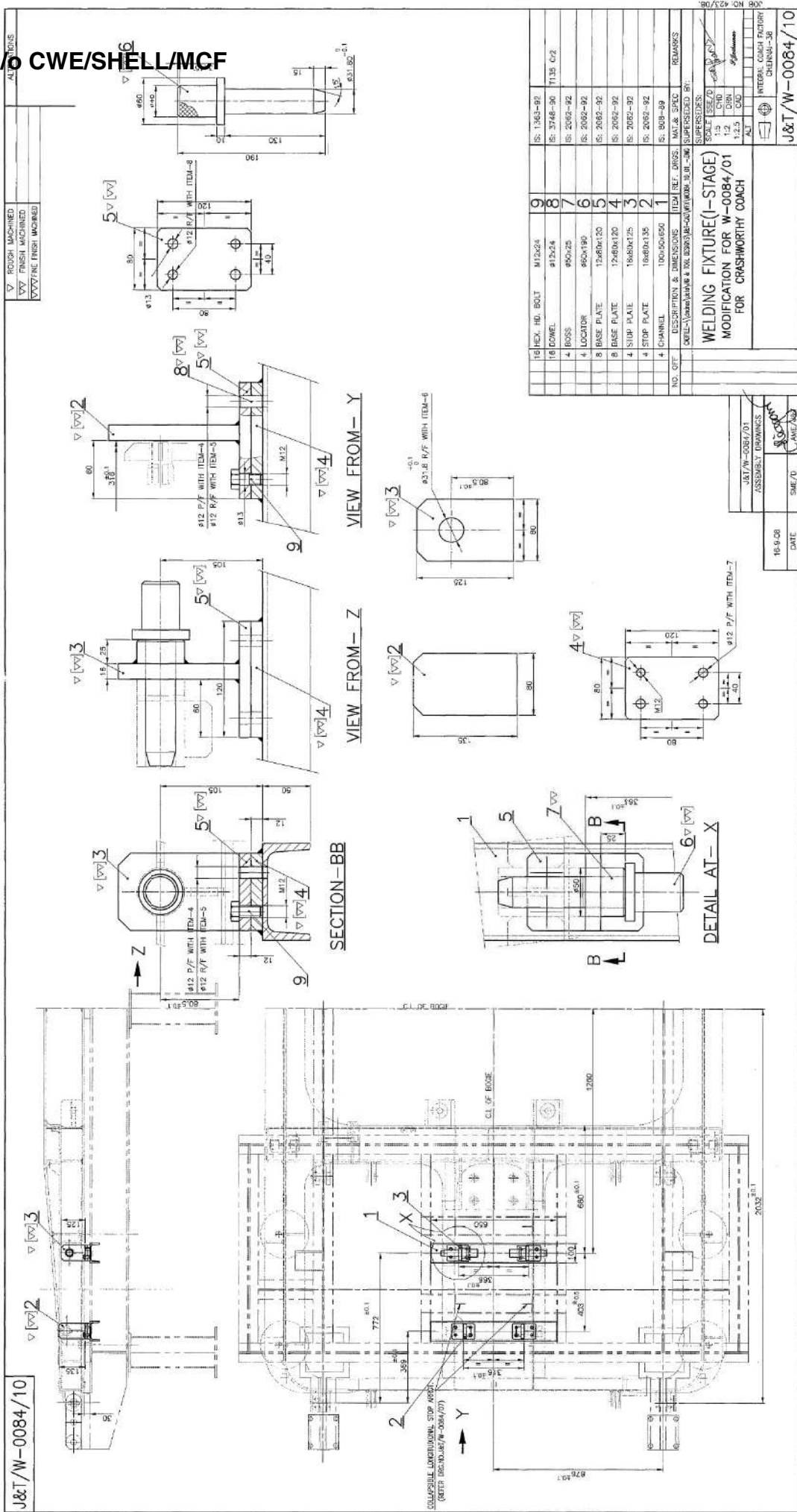
| | | |
|-------------|-------|-------|
| SUPERSIDES: | SCALE | 55E/D |
| | 1:10 | CLAY |

| | |
|-----|------|
| 1:2 | CAD |
| 1:2 | DRAW |
| 1:2 | CAD |

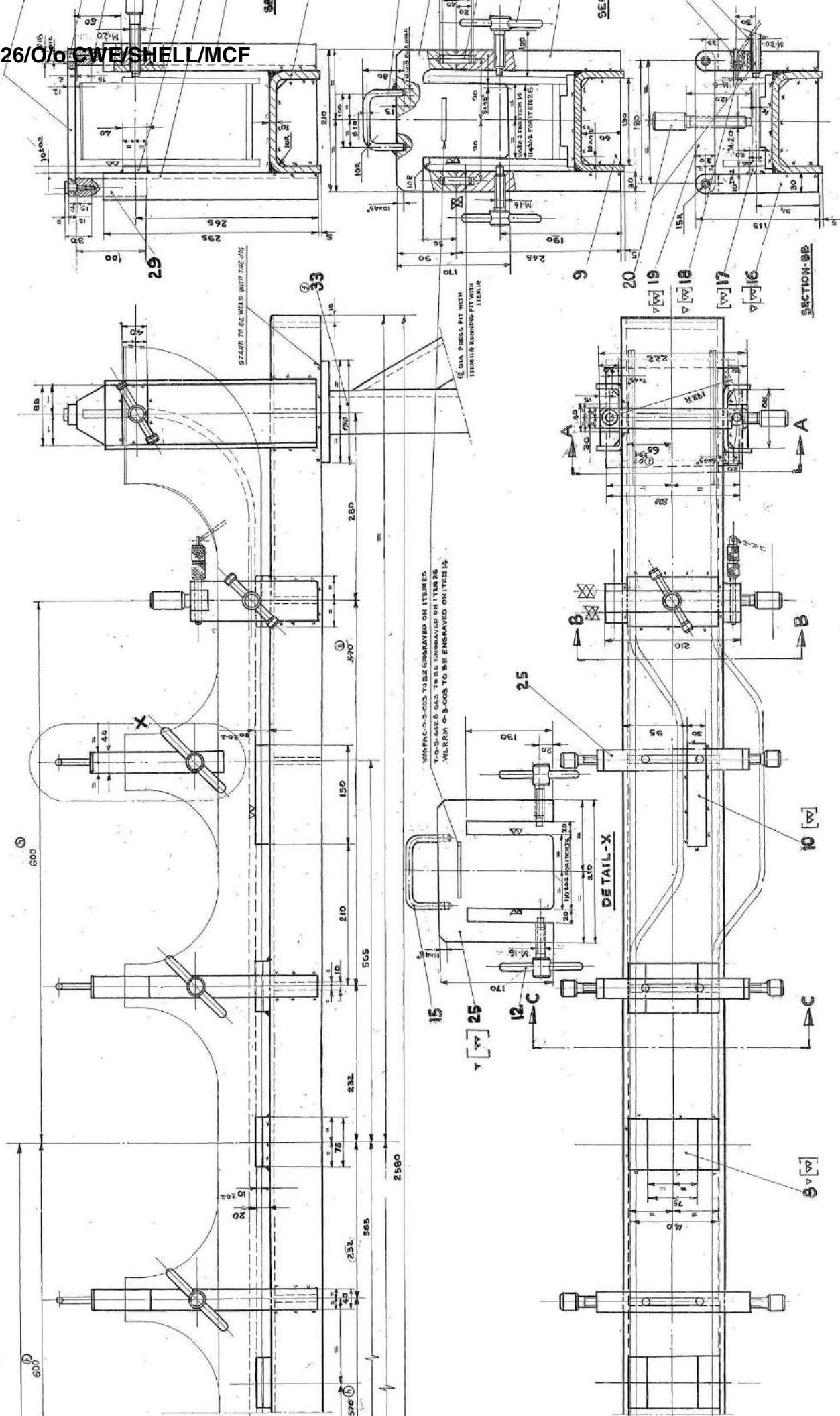
| | | |
|------------|----------|--|
| ΔT | α | |
| INTEGRAL | | |

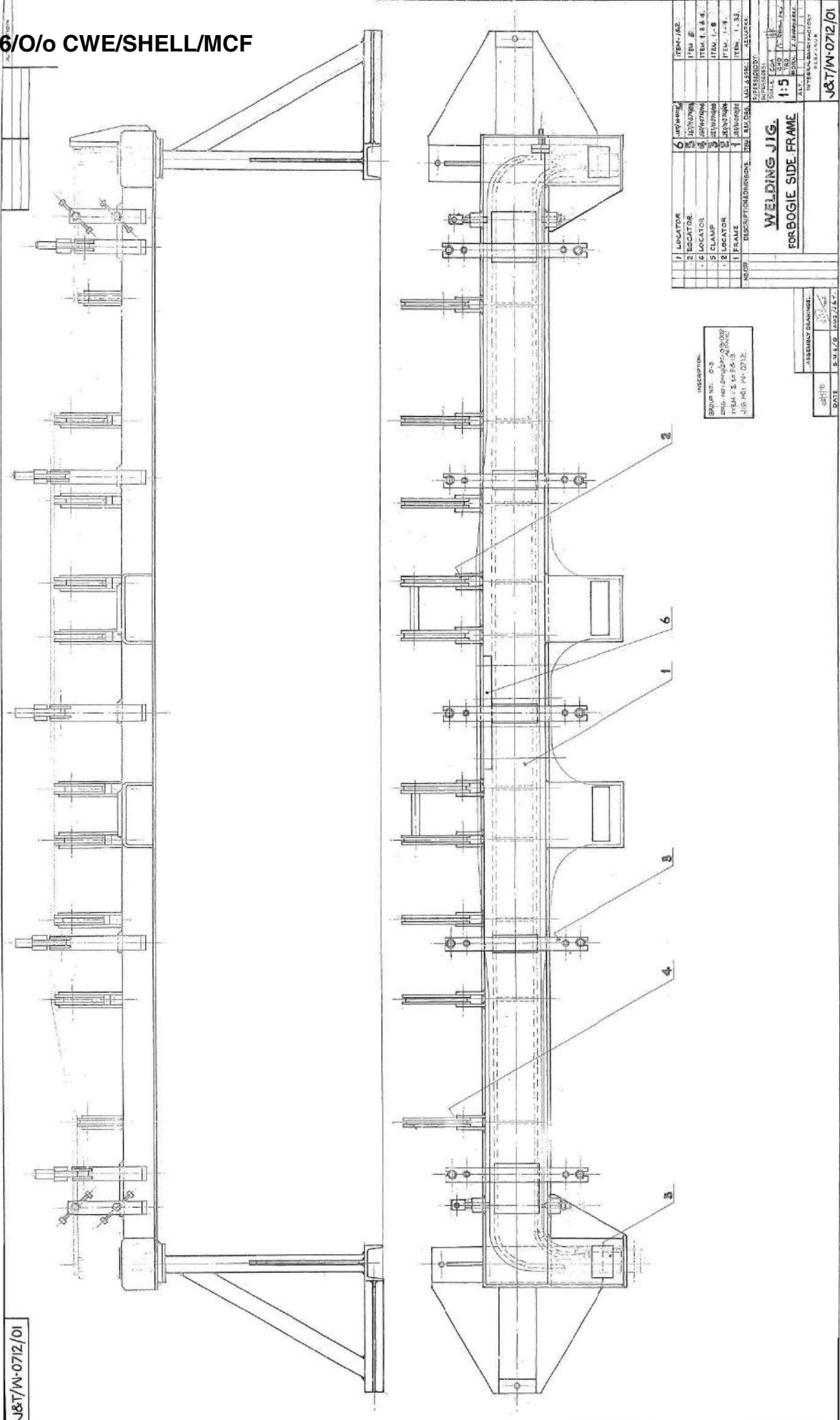
J&T/W-

FORM 1041-10-1



[illegible]





J&T/W-0712/01

| ITEM - I.D. | | ITEM - I.D. | |
|-------------|---------|-------------|---------|
| 1 | LOCATOR | 6 | LOCATOR |
| 2 | LOCATOR | 7 | LOCATOR |
| 3 | LOCATOR | 8 | LOCATOR |
| 4 | LOCATOR | 9 | LOCATOR |
| 5 | CLAMP | 10 | CLAMP |
| 6 | CLAMP | 11 | CLAMP |
| 7 | CLAMP | 12 | CLAMP |
| 8 | CLAMP | 13 | CLAMP |
| 9 | CLAMP | 14 | CLAMP |
| 10 | CLAMP | 15 | CLAMP |
| 11 | CLAMP | 16 | CLAMP |
| 12 | CLAMP | 17 | CLAMP |
| 13 | CLAMP | 18 | CLAMP |
| 14 | CLAMP | 19 | CLAMP |
| 15 | CLAMP | 20 | CLAMP |
| 16 | CLAMP | 21 | CLAMP |
| 17 | CLAMP | 22 | CLAMP |
| 18 | CLAMP | 23 | CLAMP |
| 19 | CLAMP | 24 | CLAMP |
| 20 | CLAMP | 25 | CLAMP |
| 21 | CLAMP | 26 | CLAMP |
| 22 | CLAMP | 27 | CLAMP |
| 23 | CLAMP | 28 | CLAMP |
| 24 | CLAMP | 29 | CLAMP |
| 25 | CLAMP | 30 | CLAMP |
| 26 | CLAMP | 31 | CLAMP |
| 27 | CLAMP | 32 | CLAMP |
| 28 | CLAMP | 33 | CLAMP |
| 29 | CLAMP | 34 | CLAMP |
| 30 | CLAMP | 35 | CLAMP |
| 31 | CLAMP | 36 | CLAMP |
| 32 | CLAMP | 37 | CLAMP |
| 33 | CLAMP | 38 | CLAMP |
| 34 | CLAMP | 39 | CLAMP |
| 35 | CLAMP | 40 | CLAMP |
| 36 | CLAMP | 41 | CLAMP |
| 37 | CLAMP | 42 | CLAMP |
| 38 | CLAMP | 43 | CLAMP |
| 39 | CLAMP | 44 | CLAMP |
| 40 | CLAMP | 45 | CLAMP |
| 41 | CLAMP | 46 | CLAMP |
| 42 | CLAMP | 47 | CLAMP |
| 43 | CLAMP | 48 | CLAMP |
| 44 | CLAMP | 49 | CLAMP |
| 45 | CLAMP | 50 | CLAMP |
| 46 | CLAMP | 51 | CLAMP |
| 47 | CLAMP | 52 | CLAMP |
| 48 | CLAMP | 53 | CLAMP |
| 49 | CLAMP | 54 | CLAMP |
| 50 | CLAMP | 55 | CLAMP |
| 51 | CLAMP | 56 | CLAMP |
| 52 | CLAMP | 57 | CLAMP |
| 53 | CLAMP | 58 | CLAMP |
| 54 | CLAMP | 59 | CLAMP |
| 55 | CLAMP | 60 | CLAMP |
| 56 | CLAMP | 61 | CLAMP |
| 57 | CLAMP | 62 | CLAMP |
| 58 | CLAMP | 63 | CLAMP |
| 59 | CLAMP | 64 | CLAMP |
| 60 | CLAMP | 65 | CLAMP |
| 61 | CLAMP | 66 | CLAMP |
| 62 | CLAMP | 67 | CLAMP |
| 63 | CLAMP | 68 | CLAMP |
| 64 | CLAMP | 69 | CLAMP |
| 65 | CLAMP | 70 | CLAMP |
| 66 | CLAMP | 71 | CLAMP |
| 67 | CLAMP | 72 | CLAMP |
| 68 | CLAMP | 73 | CLAMP |
| 69 | CLAMP | 74 | CLAMP |
| 70 | CLAMP | 75 | CLAMP |
| 71 | CLAMP | 76 | CLAMP |
| 72 | CLAMP | 77 | CLAMP |
| 73 | CLAMP | 78 | CLAMP |
| 74 | CLAMP | 79 | CLAMP |
| 75 | CLAMP | 80 | CLAMP |
| 76 | CLAMP | 81 | CLAMP |
| 77 | CLAMP | 82 | CLAMP |
| 78 | CLAMP | 83 | CLAMP |
| 79 | CLAMP | 84 | CLAMP |
| 80 | CLAMP | 85 | CLAMP |
| 81 | CLAMP | 86 | CLAMP |
| 82 | CLAMP | 87 | CLAMP |
| 83 | CLAMP | 88 | CLAMP |
| 84 | CLAMP | 89 | CLAMP |
| 85 | CLAMP | 90 | CLAMP |
| 86 | CLAMP | 91 | CLAMP |
| 87 | CLAMP | 92 | CLAMP |
| 88 | CLAMP | 93 | CLAMP |
| 89 | CLAMP | 94 | CLAMP |
| 90 | CLAMP | 95 | CLAMP |
| 91 | CLAMP | 96 | CLAMP |
| 92 | CLAMP | 97 | CLAMP |
| 93 | CLAMP | 98 | CLAMP |
| 94 | CLAMP | 99 | CLAMP |
| 95 | CLAMP | 100 | CLAMP |

INSCRIPTION
GROUP NO. 0-3
ITEM 1-2 TO 100
J&T/W-0712

WELDING JIG
FOR BOGIE SIDE FRAME

DATE 2.11.00

ASSEMBLY DRAWING

DATE 2.11.00

DATE 2.11.00

DATE 2.11.00

DATE 2.11.00

