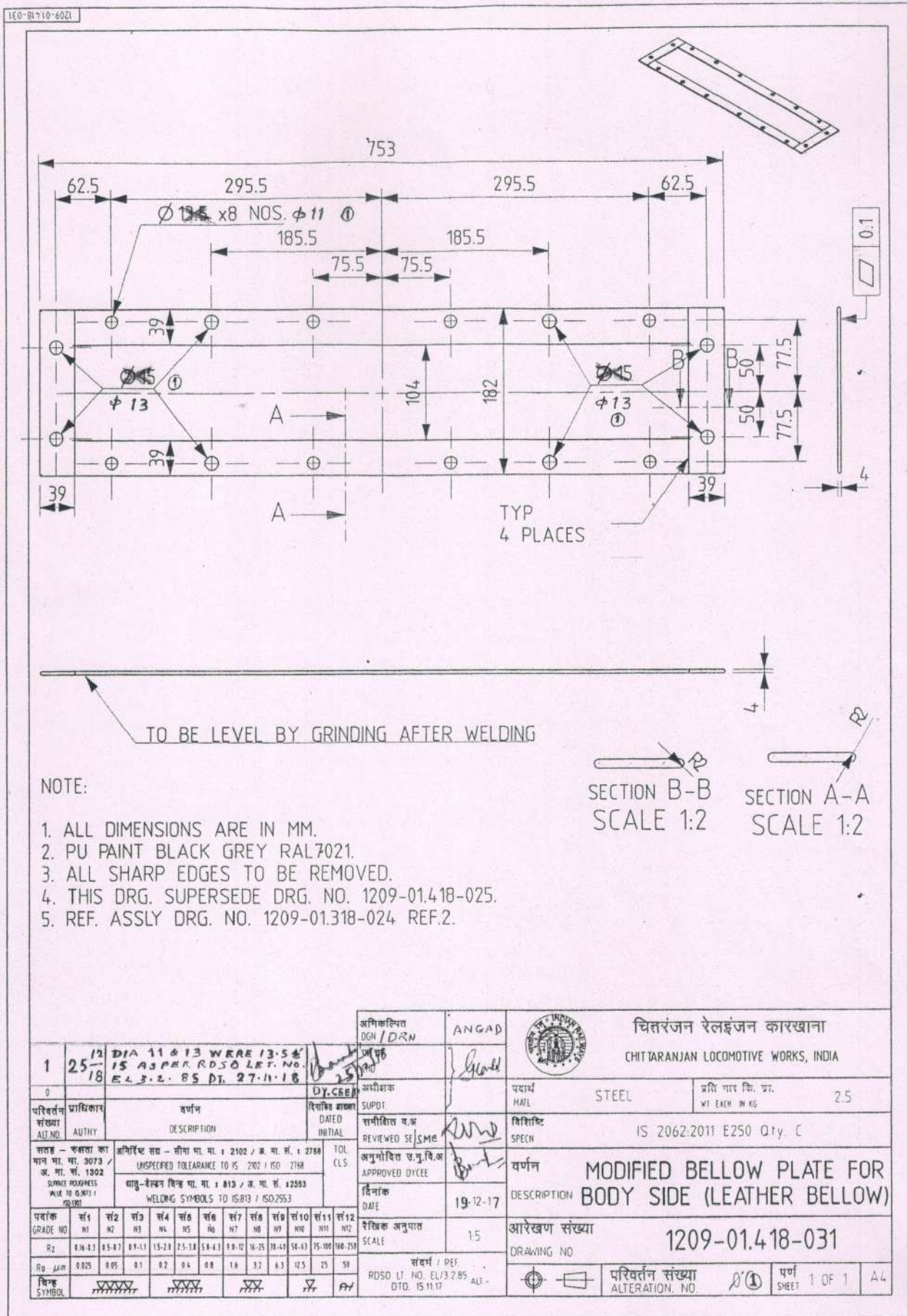
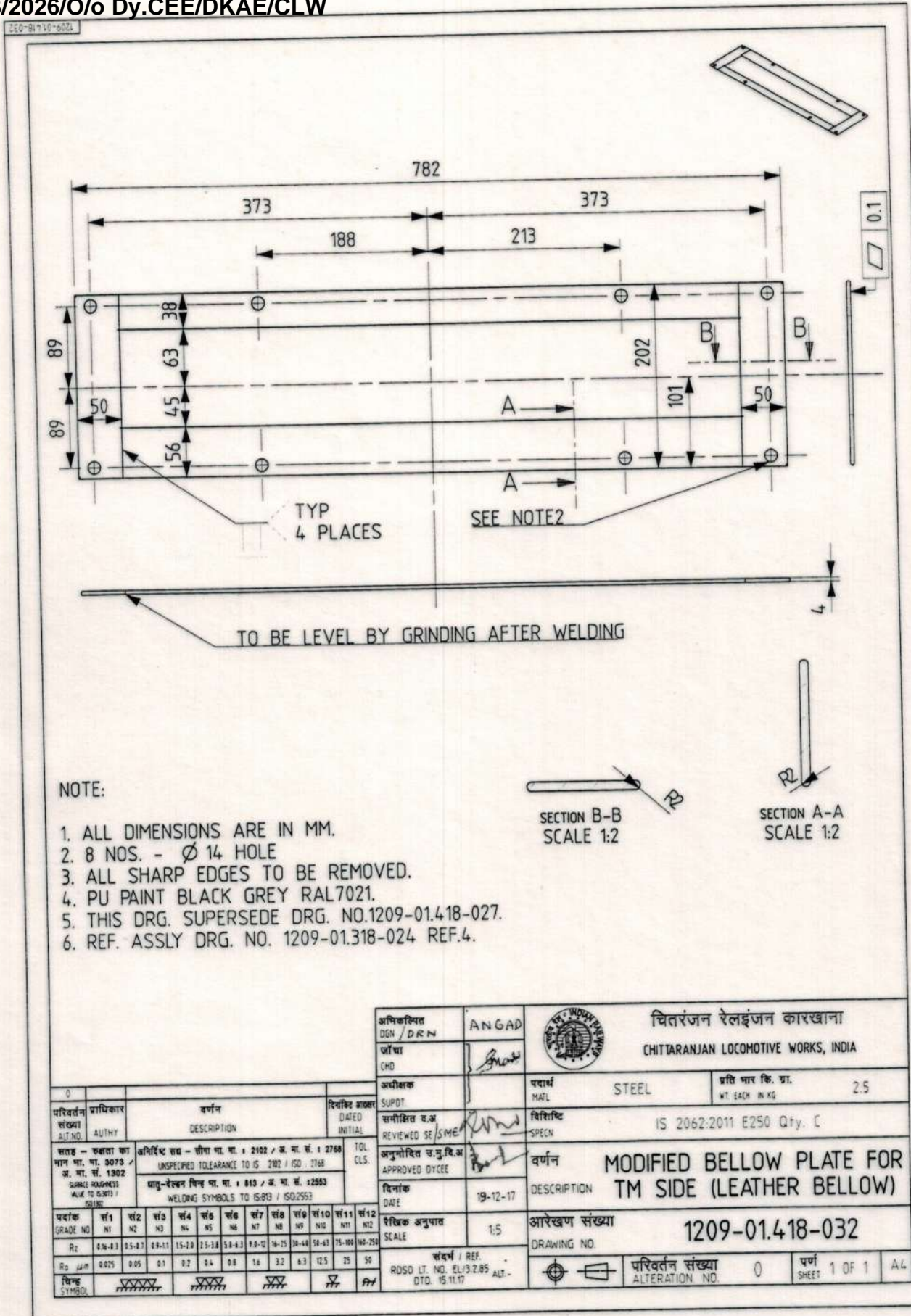
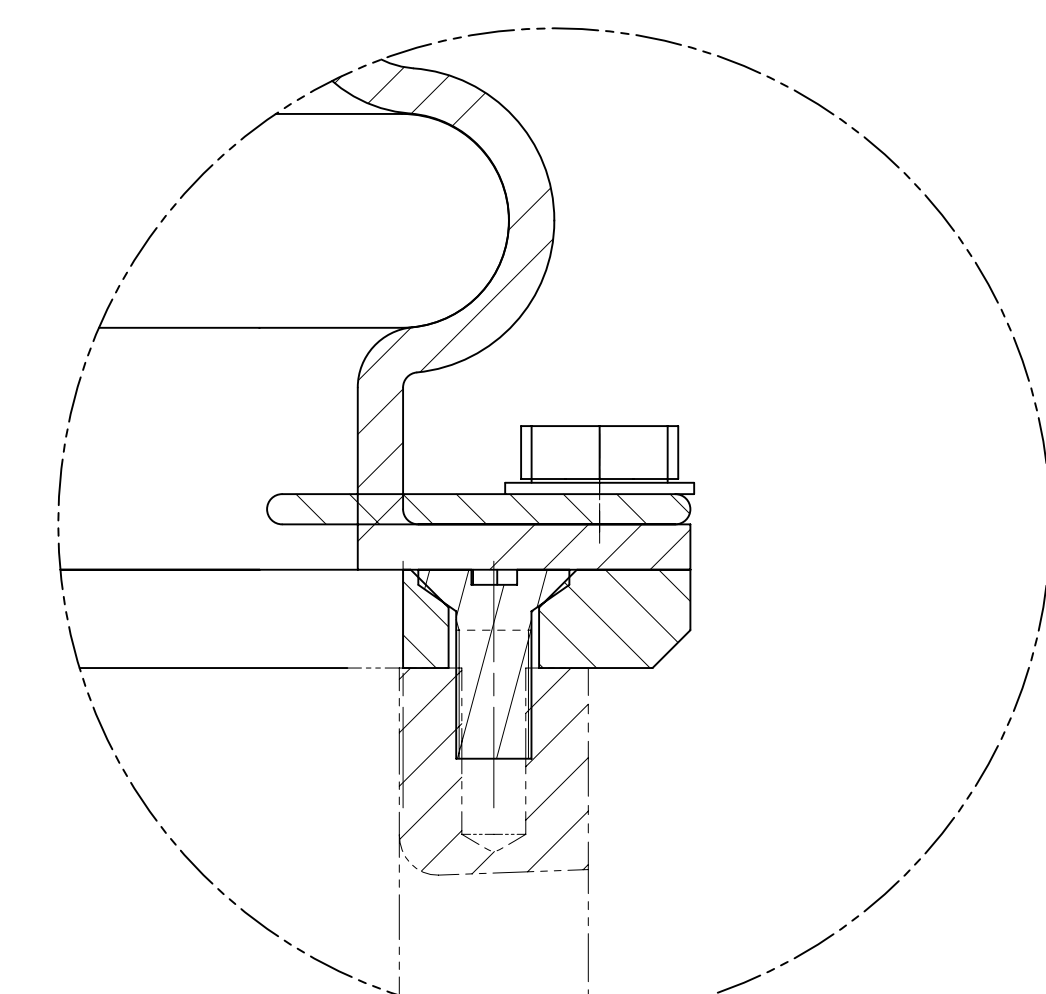


1	T205/044	1209-01.018-024 REF-8	48
Sl. No.	C&D No.	ASSLY. DRG. REF.	Qty./ LOOO

परिवर्तन संख्या ALT. NO.		प्राधिकार AUTHY.	वर्णन DESCRIPTION	दिनांक DATED	अधिकृत INITIAL	अधीक्षक SUPER.	समीक्षित व.अ. REVIEWED BY	पदार्थ MATERIAL	प्रति भार कि. ग्र. WT. EACH IN KG.
संख्या - 3073 / अ. सं. 1302			अनिर्दिष्ट सट - सीमा मा. : 2102 / अ. मा. सं. : 2786 UNSPECIFIED TOLERANCE TO IS : 2101 / ISO : 2786					STAINLESS STEEL	
मातृ-वेल्डिंग चिह्न मा. मा. : 813 / अ. मा. सं. : 2553 WELDING SYMBOLS TO IS 813 / ISO 2553								A2-70 TO DIN7991 / ISO 10642 Gr. 304	
पदार्थ GRADE NO.		सं. 1 N1	सं. 2 N2	सं. 3 N3	सं. 4 N4	सं. 5 N5	सं. 6 N6	सं. 7 N7	सं. 8 N8
0.16-0.3		0.5-0.7	0.9-1.1	1.5-2.0	2.5-3.0	3.0-4.0	4.0-5.0	5.0-6.0	6.0-7.0
0.025		0.05	0.1	0.2	0.4	0.8	1.6	3.2	6.3
0.075		0.15	0.3	0.6	1.2	2.5	5.0	10.0	20.0
चिह्न SYMBOL		XXXX		XXXX		XXXX		XXXX	
संख्या DRAWING NO.		1209-01.418-030							
परिवर्तन संख्या ALTERATION NO.		0							
पृष्ठ SHEET		1 OF 1							
आकार A4									







DETAIL F
SCALE 1:1



12	T205/026	SHAKFLEX 221 GREY 320 ML TUBE	2	STAINLESS STEEL	A.I.S.I.GR.304
11	T205/045	WASHER BELLEVILLE CONCAL SPRING 8.2	12	STAINLESS STEEL	A.I.S.I.GR.304
10	T205/046	WASHER BELLEVILLE CONCAL SPRING 10.2	8	STAINLESS STEEL	A.I.S.I.GR.304
9	T205/047	WASHER BELLEVILLE CONCAL SPRING 12.2	8	STAINLESS STEEL	A.I.S.I.GR.304
8	T205/043	BOLT HEX M8 x 125 - 20 LG.	12	STAINLESS STEEL	(S-184) PT-2, GR. A.I.S.I-304
7	T205/049	BOLT HEX M10X1.5 - 20 LG.	8	STAINLESS STEEL	A.I.S.I.GR.304
6	T205/048	BOLT HEX M12X1.75 - 20 LG.	8	STAINLESS STEEL	A.I.S.I. GR. 304
5	T205/044	1209-01-118-030 H.SK SOCKET CSK HD. S25X6	1	MODIFIED BELLOW PLATE FOR TM SIDE LEATHER BELLOW	
4	T205/042	1209-01-118-032 MODIFIED BELLOW PLATE FOR TM SIDE LEATHER BELLOW	1	MODIFIED PLATE - FLANGE TRACTION MOTOR INLET FOR LEATHER BELLOW	
3	T205/041	1209-01-118-026 MODIFIED BELLOW PLATE FOR BODY SIDE LEATHER BELLOW	1	MODIFIED BELLOW PLATE FOR BODY SIDE LEATHER BELLOW	
2	T205/040	1209-01-118-031	1		
1	T205/039	1209-01-018-029 LEATHER BELLOW (SINGLE SECTION)	1		

डिस्ट्रिब्यूशन
REF. NO. & D. NO.

वर्कशॉप
PART ORG. NO.

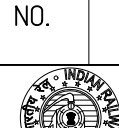
डिस्ट्रिब्यूशन
DESCRIPTION

कॉल
QTY.

मटेरियल
MTRL.

पार्ट्स
SPECN

डिस्ट्रिब्यूशन
WTC IN K



चितरंजण लोकोमोटिव कारखाना
CHITTARANJAN LOCOMOTIVE WORKS, INDIA

डिस्ट्रिब्यूशन दि. वा.
dt. 15.07.2018

LEATHER BELLOW ASSLY FOR T.M.

1209-01.018-024

डिस्ट्रिब्यूशन
REF. NO. & D. NO.

वर्कशॉप
PART ORG. NO.

डिस्ट्रिब्यूशन
DESCRIPTION

कॉल
QTY.

मटेरियल
MTRL.

पार्ट्स
SPECN

डिस्ट्रिब्यूशन
WTC IN K

डिस्ट्रिब्यूशन दि. वा.
dt. 15.07.2018

LEATHER BELLOW ASSLY FOR T.M.

1209-01.018-024

डिस्ट्रिब्यूशन
REF. NO. & D. NO.

वर्कशॉप
PART ORG. NO.

डिस्ट्रिब्यूशन
DESCRIPTION

कॉल
QTY.

मटेरियल
MTRL.

पार्ट्स
SPECN

डिस्ट्रिब्यूशन
WTC IN K

<p>पुन-लेखांकन विवर</p> <p>क्र. सं. : 813 अ सं. सं. : 2583</p> <p>आ. सं. : 1002</p> <p>15/11/2023</p>		<p>अतिरिक्त पद - सी.पी. नं. : 2102 अ सं. सं. : 2788</p> <p>आ. सं. : 1002</p> <p>15/11/2023</p>		<p>10</p> <p>11</p> <p>12</p> <p>13</p> <p>14</p> <p>15</p> <p>16</p> <p>17</p> <p>18</p> <p>19</p> <p>20</p> <p>21</p> <p>22</p> <p>23</p> <p>24</p> <p>25</p> <p>26</p> <p>27</p> <p>28</p> <p>29</p> <p>30</p> <p>31</p> <p>32</p> <p>33</p> <p>34</p> <p>35</p> <p>36</p> <p>37</p> <p>38</p> <p>39</p> <p>40</p> <p>41</p> <p>42</p> <p>43</p> <p>44</p> <p>45</p> <p>46</p> <p>47</p> <p>48</p> <p>49</p> <p>50</p> <p>51</p> <p>52</p> <p>53</p> <p>54</p> <p>55</p> <p>56</p> <p>57</p> <p>58</p> <p>59</p> <p>60</p> <p>61</p> <p>62</p> <p>63</p> <p>64</p> <p>65</p> <p>66</p> <p>67</p> <p>68</p> <p>69</p> <p>70</p> <p>71</p> <p>72</p> <p>73</p> <p>74</p> <p>75</p> <p>76</p> <p>77</p> <p>78</p> <p>79</p> <p>80</p> <p>81</p> <p>82</p> <p>83</p> <p>84</p> <p>85</p> <p>86</p> <p>87</p> <p>88</p> <p>89</p> <p>90</p> <p>91</p> <p>92</p> <p>93</p> <p>94</p> <p>95</p> <p>96</p> <p>97</p> <p>98</p> <p>99</p> <p>100</p>		<p>1</p> <p>2</p> <p>3</p> <p>4</p> <p>5</p> <p>6</p> <p>7</p> <p>8</p> <p>9</p> <p>10</p> <p>11</p> <p>12</p> <p>13</p> <p>14</p> <p>15</p> <p>16</p> <p>17</p> <p>18</p> <p>19</p> <p>20</p> <p>21</p> <p>22</p> <p>23</p> <p>24</p> <p>25</p> <p>26</p> <p>27</p> <p>28</p> <p>29</p> <p>30</p> <p>31</p> <p>32</p> <p>33</p> <p>34</p> <p>35</p> <p>36</p> <p>37</p> <p>38</p> <p>39</p> <p>40</p> <p>41</p> <p>42</p> <p>43</p> <p>44</p> <p>45</p> <p>46</p> <p>47</p> <p>48</p> <p>49</p> <p>50</p> <p>51</p> <p>52</p> <p>53</p> <p>54</p> <p>55</p> <p>56</p> <p>57</p> <p>58</p> <p>59</p> <p>60</p> <p>61</p> <p>62</p> <p>63</p> <p>64</p> <p>65</p> <p>66</p> <p>67</p> <p>68</p> <p>69</p> <p>70</p> <p>71</p> <p>72</p> <p>73</p> <p>74</p> <p>75</p> <p>76</p> <p>77</p> <p>78</p> <p>79</p> <p>80</p> <p>81</p> <p>82</p> <p>83</p> <p>84</p> <p>85</p> <p>86</p> <p>87</p> <p>88</p> <p>89</p> <p>90</p> <p>91</p> <p>92</p> <p>93</p> <p>94</p> <p>95</p> <p>96</p> <p>97</p> <p>98</p> <p>99</p> <p>100</p>		<p>LEATHER BELLOW ASSLY FOR T.M.</p> <p>1209-01.018-024</p>	
---	--	--	--	--	--	---	--	---	--