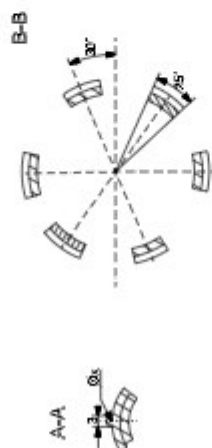
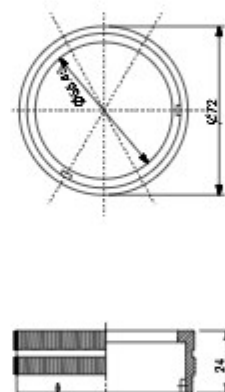


9	HBT41/03B7R0002	CAL/SL INDOOR 538 40/36
5	HBT 415275P004	BAU/LET SIZE 36
7	HBT 410198P002	BUSHES/TEMP. SHRTZP
6	HBT 415273P004	PLUG BODY SIZE 36P
1	HBT631512P000	ASSEMBLY
REF. NO	ABB ID	ITEM DESCRIPTION
		
<p><i>Responsible Engineer</i></p> <p>DET. MANUEL ANTONIO VARELA, BBA</p>		
<p>SET OF COMPLETE PLUG+SLUG 22936 SKT N° INDOOR</p>		
<p>CLWES/35K-15M/24</p>		

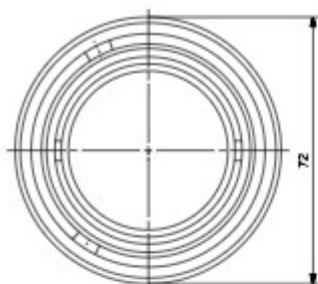
ALL DIMENSIONS ARE IN INCHES



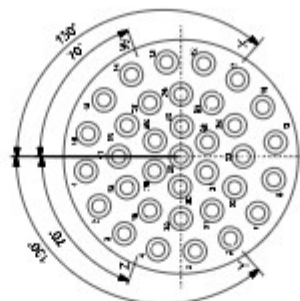
REF-9(HB TB416397P0011)



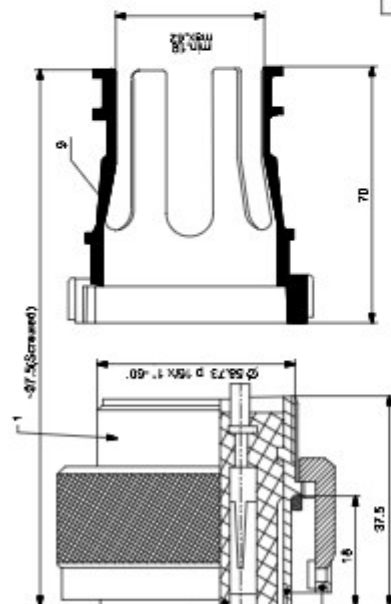
REF-8(HBT415275P0005)



TECHNICAL DATA			
CONV. %	SIZE	MAX	CONDUCTOR CROSS SECTION
-	8	73A	10.0 mm ²
35	12	41A	0.5 - 8.0 mm ²
-	16	22A	0.5 - 1.5 mm ²
TEST VOLTAGE: 2800V			
INSULATION RESISTANCE: MIN. 500MΩ			

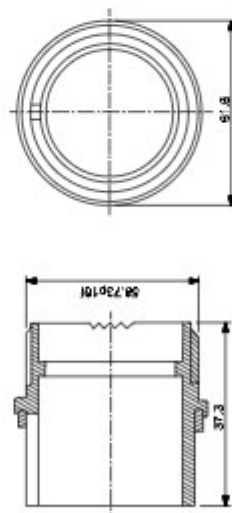


REF-7(HBT415291P0002)



REF-1

ASSEMBLY DRAWING(HBTB315113R0001)



REF-6(HBT415273P0005)

PINS FOR ILLUSTRATION ONLY

9	HBTB1039P007-1	CABLE SLEEVE SIZE 40 POM
7	HBT415273P0005	BAYONET SIZE 40
8	HBT415281P0005	PLUG BODY, SIZE 40B
6	HBT415273P0005	PLUG BODY, SIZE 40B
5	HBTB31513R0001	4558-MBL
1	REF. NO. 488.10	ITEM DESCRIPTION

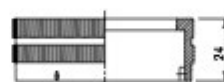
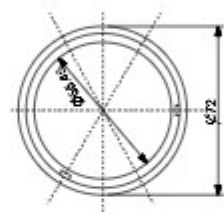
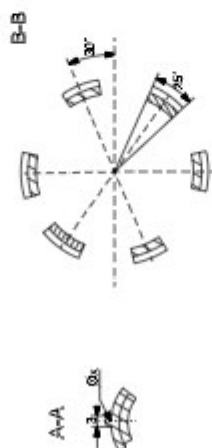
ST 35PM0 BU'NTR KABELLPLUG 35PM0 SKT'N' INDOOR
KBTB 3-15113R00M

Prüfungsausschuss

ALL DINERS ARE IN THE

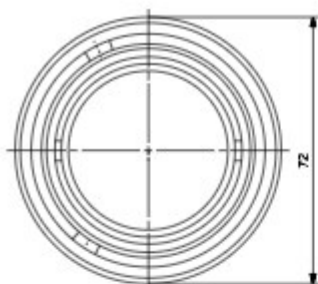
ST35940 BU"R KABEL+PLUG 35R40 SKTN
INDEX

TUES/3RSK-15/0124

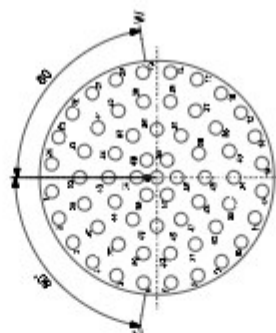


REF-9(HBTB416397P0011)

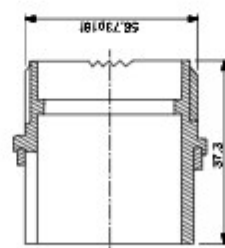
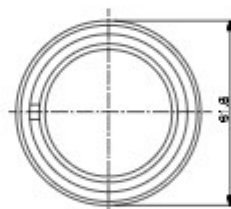
REF-8(HBT415275P0005)



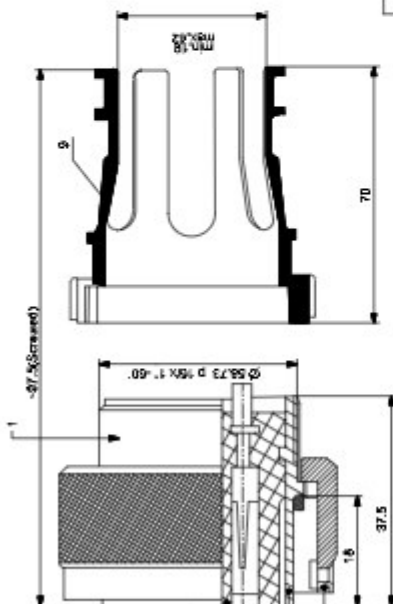
TECHNICAL DATA			
CONV.	SIZE	MAX.	CONDUCTOR CROSS SECTION
8	8	73A	10.0 mm ²
22	12	41A	0.5-8.0 mm ²
-	16	22A	0.5-1.5 mm ²
TEST VOLTAGE: 2800V			
INSULATION RESISTANCE: MIN. 500MΩ			



REF-7(HBT415293P0002)



REF-6(HBT415273P0005)



REF-1

ASSEMBLY DRAWING(HBTB315157R0001)

SOCKET FOR ILLUSTRATION ONLY

9	HBT411339P0001	CABLE SLEEVE SIZE 40 PQM
8	HBT415273P0005	SAFONET SIZE 40
7	HBT415273P0009	BUSHES TEMP. AT 840819
6	HBT415273P0005	PLUS BODY SIZE 40B
5	HBT415273P0001	4-SS-MBL
4	HBT415273P0001	ITEM DESCRIPTION
3	HBT415273P0001	ADD. ID
2	HBT415273P0001	ITEM NO.
1	HBT415273P0001	ITEM NO.

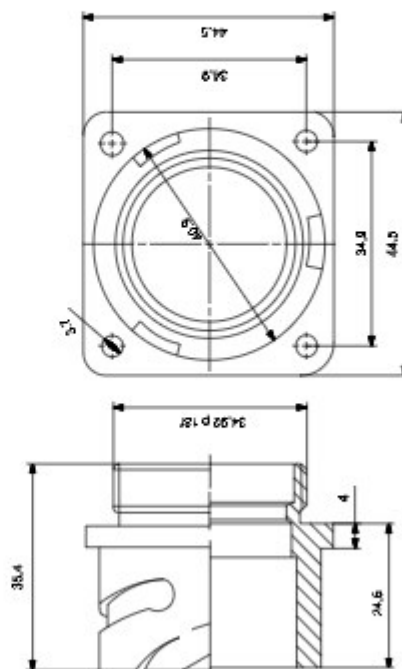
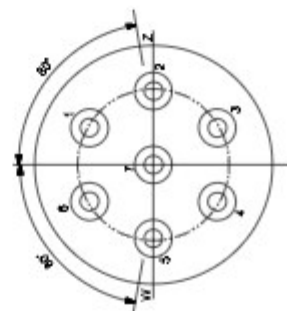
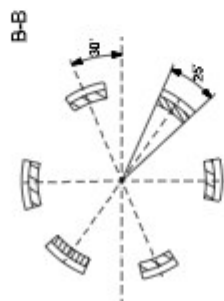
STG1P40 BU" N" IR KABEL PLUG 61P40 SKT W INDOOR
HSTB 315157R011

ALL DIMENSIONS ARE IN mm

[illegible]

Research findings summary

KABEL/PLUG 61940 SKT 14
K00000



CONTACTS FOR ILLUSTRATION ONLY

8	-BT 44 10 397 R0004	CASLV INDOOR S24 (32.24)
7	-BT 41 52 BSR0001	BUB-EE TEMPLATE, 50M/P
6	-BT 41 52 VOP003	SOCKET BODY, SIZE 24 "B"
1	-BT B315158 R0001	ASSEMBLY
PART NO.	QTY REQD.	ITEM DESCRIPTION

[illegible]

DATE	10/10/12	TIME	10:00	BY	WJ
PROJECT	SOCKET 1024 PLYMOUTH cable clamp and Reduction Ring				
DESCRIPTION	CLWES/3/5K-18/0124				

Date	Particulars	Rs.		Paise		Total	Total	Total	Total
		Rs.	Paise	Rs.	Paise				
1997-98
1998-99
1999-00
2000-01
2001-02
2002-03
2003-04
2004-05
2005-06
2006-07
2007-08
2008-09
2009-10
2010-11
2011-12
2012-13
2013-14
2014-15
2015-16
2016-17
2017-18
2018-19
2019-20
2020-21
2021-22
2022-23
2023-24
2024-25
2025-26
2026-27
2027-28
2028-29
2029-30
2030-31
2031-32
2032-33
2033-34
2034-35
2035-36
2036-37
2037-38
2038-39
2039-40
2040-41
2041-42
2042-43
2043-44
2044-45
2045-46
2046-47
2047-48
2048-49
2049-50
2050-51

435

REF-9(HB TB416397R0004)

HBTB416397P0012

REF-7(HBT415286P0001)

Socket 7P/24 Pin "N"(with cable clamp and Reduction Ring)

HBTB315158R0011

All dimensions are in mm

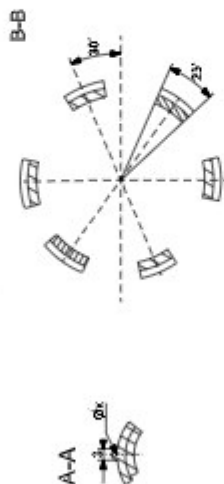
REF-6(HBT415270P0002)

REF-1
ASSEMBLY DRAWING(HBTB315158R0001)

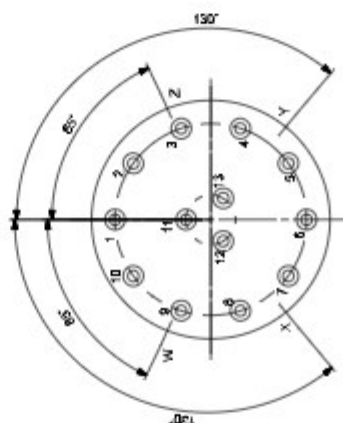
THERMAL DATA		
CON'T.	TEMP.	CHARACTERISTIC
1	270°C	270°C
2	270°C	270°C
3	270°C	270°C
4	270°C	270°C
5	270°C	270°C

04 (continued)

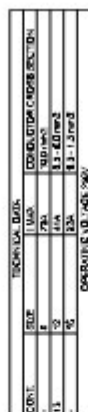
04 (continued)



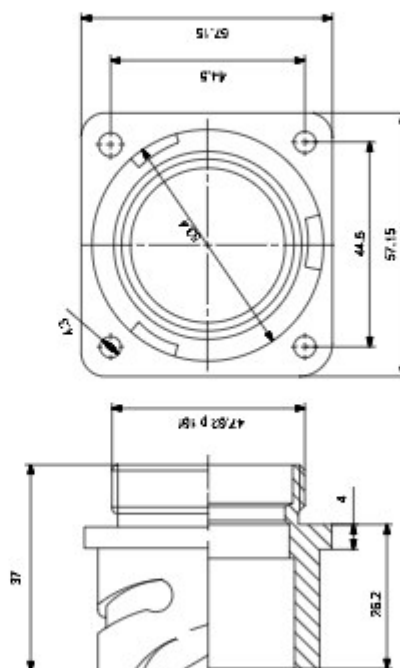
REF-9(HBTB416397P0012)



REF-7(HBT415287P0001)



REF-1
ASSEMBLY DRAWING(HBTB315159R0001)



REF-6(HBT415270P0003)

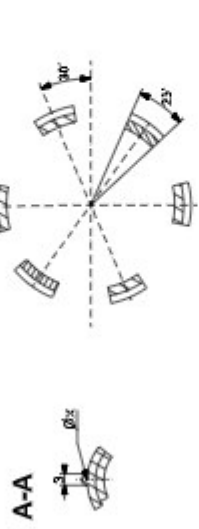
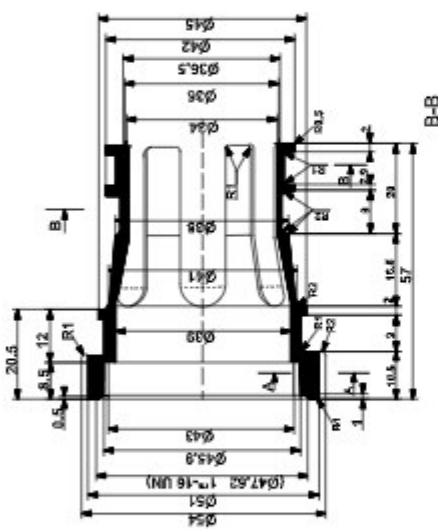
SET OF COMPLETE SOCKET/SOCKET 13P/32 PIN'N' INDOOR

HBTB315159R0011

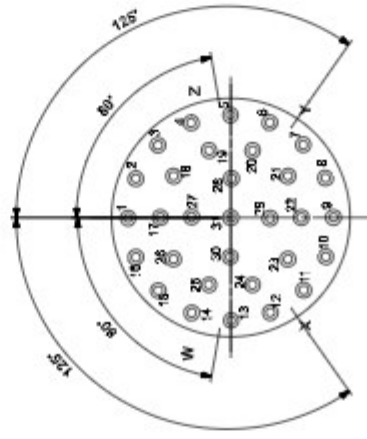
9	-HBT8410397P0012	CABLE SLEEVE 32 PDM
7	-HBT413087P0001	PINS TEMPLATE, 8307 3P
6	-HBT413210P0003	SOCKET BODY, SIZE J2B"
1	-HBT83131508R0001	ASSEMBLY
	REF. NO.	ITEM DESCRIPTION

[illegible]

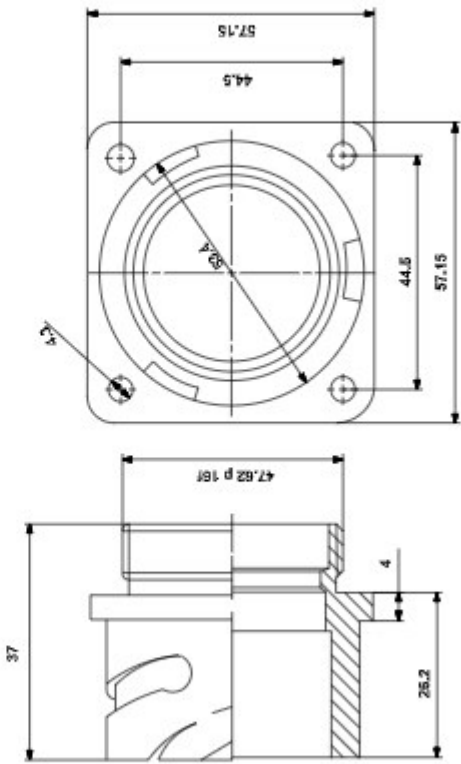
All dimensions are in mm



REF-9(HBTB416397P0012)



REF-7(HBT415288P0001)



REF-6(HBT415270P0003)

SET OF COMPLETE SOCKET/SOCKET 31P/31 PIN"N"
(With cable clamp)

HBTB315160R0011

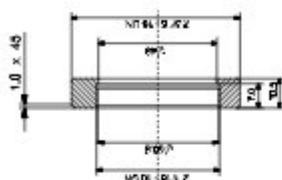
ALL DIMENSIONS ARE IN mm

CONTACTS FOR ILLUSTRATION ONLY

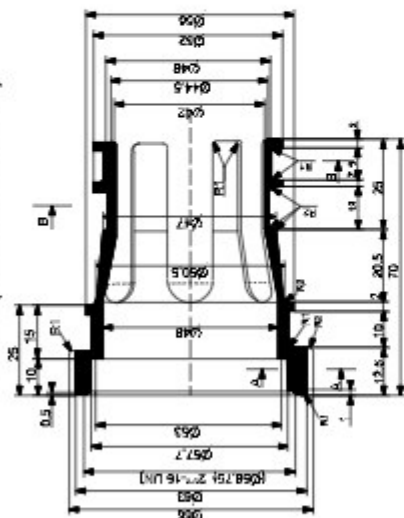
8	HBTB415387P0012	CABLE SLEEVE 32 P0M
7	HBT415288P0001	PINS TEMPLATE 231P
6	HBT415270P0003	SOCKET BODY SIZE 32"8"
1	HBTB315160R0001	ASSEMBLY
REF. NO	ABB ID	ITEM DESCRIPTION

ITEM NO.	ITEM DESCRIPTION	QTY	UNIT	PRICE	TOTAL PRICE
1	HBTB315160R0001	1	PC	100.00	100.00
6	HBT415270P0003	1	PC	50.00	50.00
7	HBT415288P0001	1	PC	50.00	50.00
8	HBTB415387P0012	1	PC	100.00	100.00
TOTAL					300.00

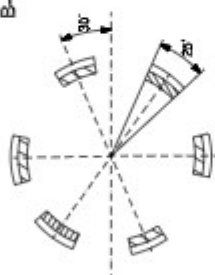
HBTB416397P0013



REF-9. (HBTB416397R0002)



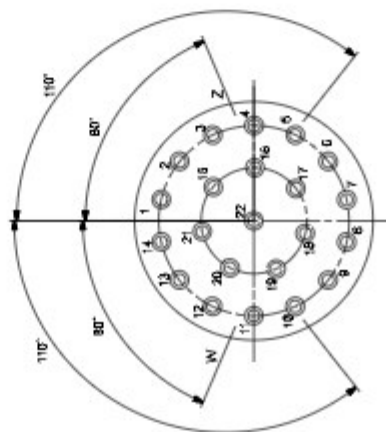
66



A-A



HBTB416397P0011



REF-7. (HBT415289P0001)

CONTACTS FOR ILLUSTRATION ONLY

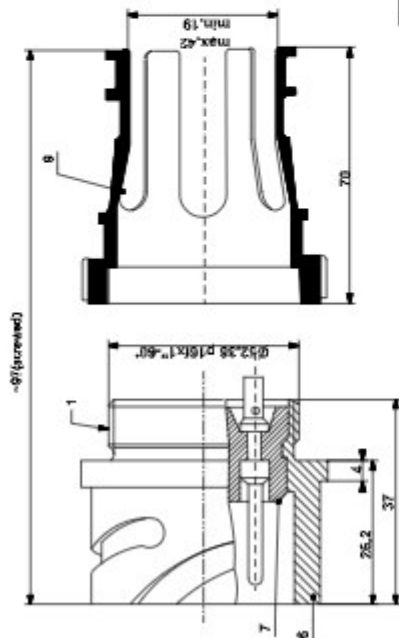
8	-BT B4 10.997 P0002	CA SLV INDOOR S36 (4.33)
7	-BT A1569 P0001	BURHES TAP/PLATE, B36.729
6	-BT A152 P0004	SOCKET BODY SIZE 3/8"
1	-BT B315452 P0001	A3SEMBLY
	PART NO. A3UR 810	ITEM DESCRIPTION

SOCKET 22P/36 PIN"N"

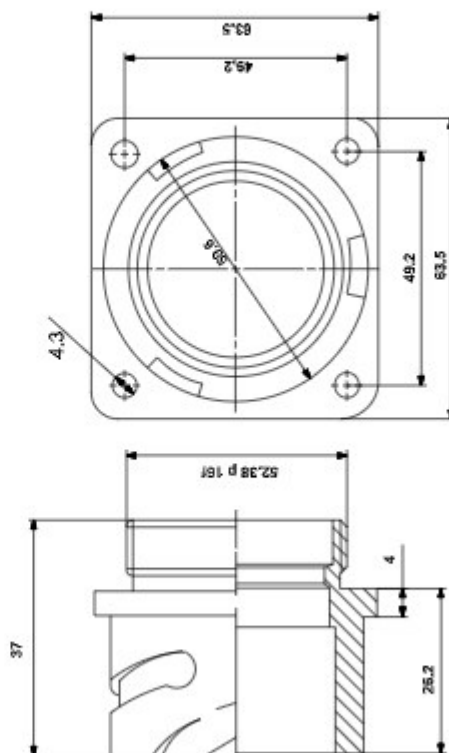
HBTB315161R0011

REF6. (HBT415270P0004)

ALL DIMENSIONS ARE IN mm



REF1. ASSEMBLY(HB7B315161R0001)



TECHNICAL DATA			
CONT.	SIZE	1 Wash	Developer Cont. max/min
1	2 1/2"	2 1/2"	100 mm ²
2	4"	4 1/4"	1.5 - 4.0 mm ²
3	6"	6 3/4"	1.5 - 1.5 mm ²

TESTING INSTRUCTIONS

INSULATION RESISTANCE MIN. 2000 MO

[illegible][illegible]

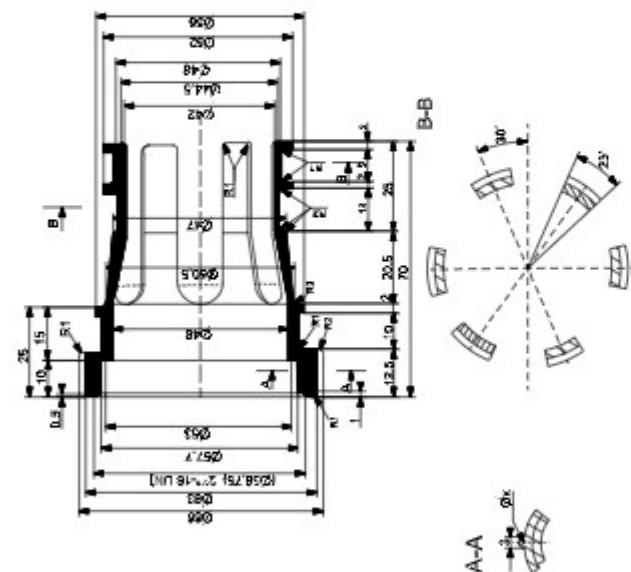


All dimensions are in mm

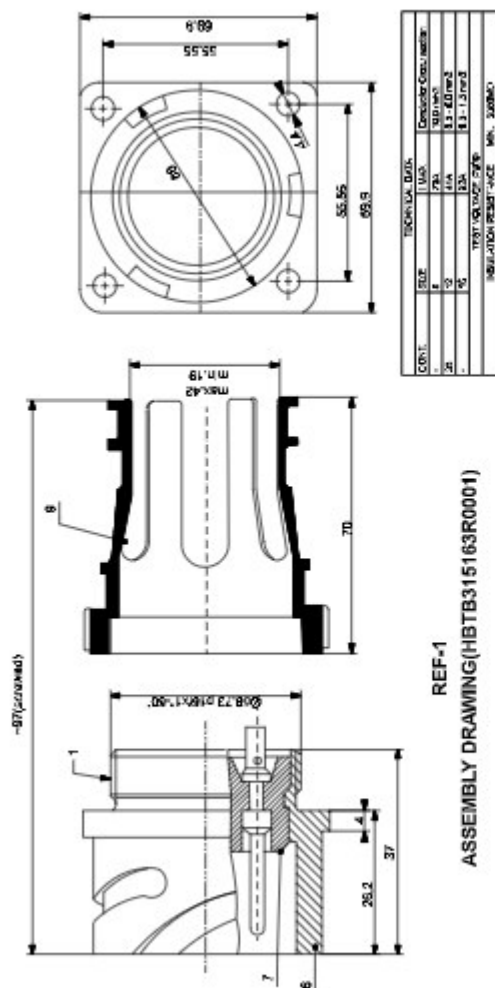
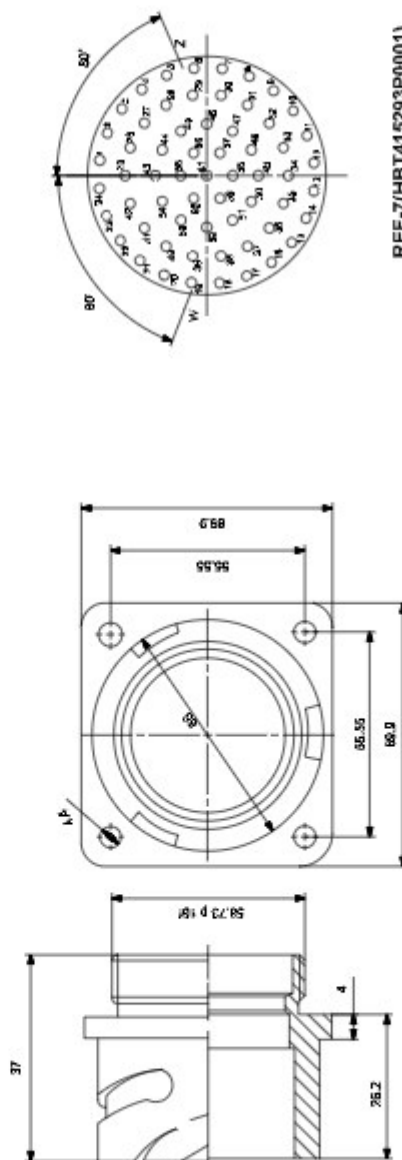
CONTACTS FOR ILLUSTRATION ONLY

8	-BTB41039/P0011	CABLE SLEEVE 40 PDM
7	-BT 41529/P0001	PINS TEMPLATE, 94035P
6	-BT 4152/P0003	SOCKET BODY SIZE 40 3"
1	-BTB315452/P0001	4 ASSEMBLY
	PART NO.	ITEM DESCRIPTION

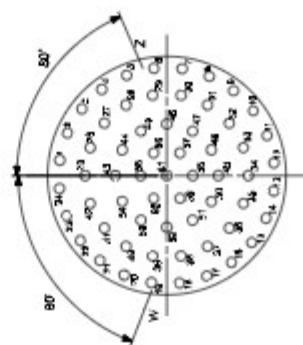
[illegible][illegible]



REF-9(HBTB416397P0011)

REF-1
ASSEMBLY DRAWING(HBTB315163R0001)

REF-6(HBT415270P0005)



REF-7(HBT415293P0001)

CONTACTS FOR ILLUSTRATION ONLY

REF. NO	ITEM DESCRIPTION
6	HBTB415293P0011
7	HBT415293P0001
8	HBT415293P0005
1	HBTB315163R0001

REF. NO	ITEM DESCRIPTION
1	HBTB315163R0001

SET OF COMPLETE SOCKET/ SOCKET 6IP40 PINN INDOOR

HBTB315163R0001

All dimensions are in mm

REF. NO	ITEM DESCRIPTION
1	HBTB315163R0001

REF. NO	ITEM DESCRIPTION
1	HBTB315163R0001

REF. NO	ITEM DESCRIPTION
1	HBTB315163R0001

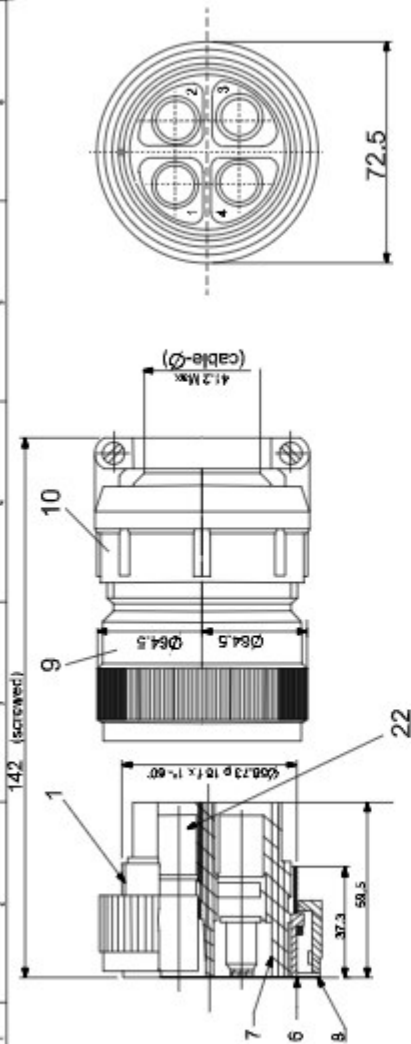
REF. NO	ITEM DESCRIPTION
1	HBTB315163R0001

REF. NO	ITEM DESCRIPTION
1	HBTB315163R0001

REF. NO	ITEM DESCRIPTION
1	HBTB315163R0001

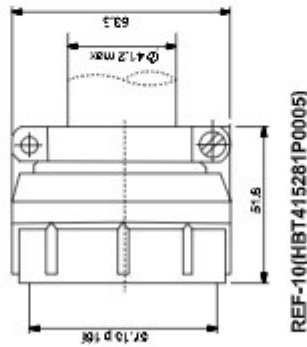
REF. NO	ITEM DESCRIPTION
1	HBTB315163R0001

REF. NO	ITEM DESCRIPTION
1	HBTB315163R0001

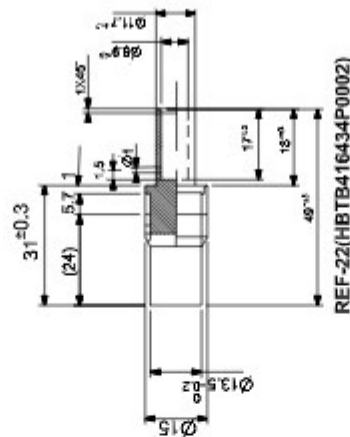


REF-1
ASSEMBLY DRAWING(HBTB315176R0001)

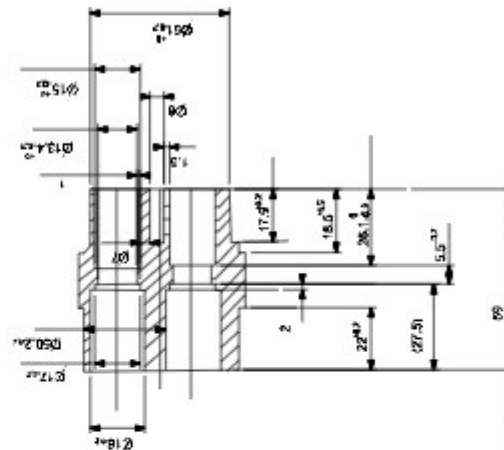
operating voltage : 750V AC/DC



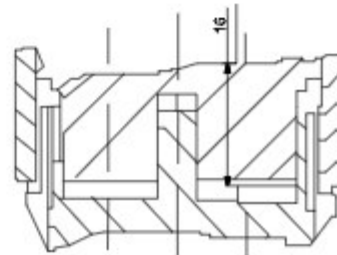
REF-10(HBT415281P0005)



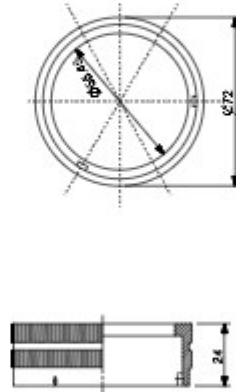
REF-22(HBTB416434P0002)



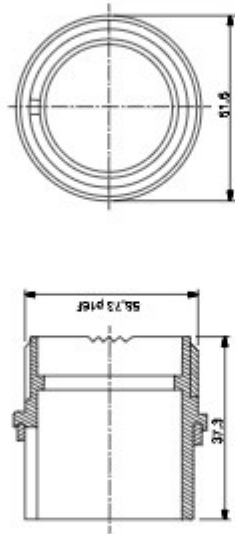
REF-7(HBTB316231P0001)



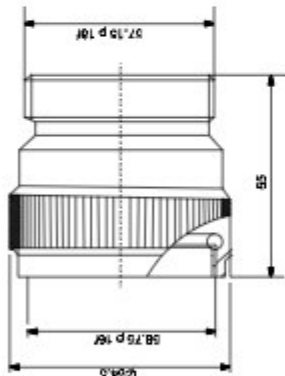
REF-8 (HBT415275P0005)



REF-6(HBT415273P0005)



REF-9(HBT415276P0005)



All dimensions are in mm

ITEM NO	ITEM DESCRIPTION
1	HBTB315176R0001
2	HBTB316231P0001
3	HBTB315176R0001
4	HBTB316231P0001
5	HBTB315176R0001
6	HBTB316231P0001
7	HBTB315176R0001
8	HBTB316231P0001
9	HBTB315176R0001
10	HBTB316231P0001
11	HBTB315176R0001
12	HBTB316231P0001

ITEM NO	ITEM DESCRIPTION
1	HBTB315176R0001
2	HBTB316231P0001
3	HBTB315176R0001
4	HBTB316231P0001
5	HBTB315176R0001
6	HBTB316231P0001
7	HBTB315176R0001
8	HBTB316231P0001
9	HBTB315176R0001
10	HBTB316231P0001
11	HBTB315176R0001
12	HBTB316231P0001

SET OF COMPLETE PLUG/PLUG 4P/40 SOCKET'N' INDOOR
HBTB315176R0112

ITEM NO	ITEM DESCRIPTION
1	HBTB315176R0001
2	HBTB316231P0001
3	HBTB315176R0001
4	HBTB316231P0001
5	HBTB315176R0001
6	HBTB316231P0001
7	HBTB315176R0001
8	HBTB316231P0001
9	HBTB315176R0001
10	HBTB316231P0001
11	HBTB315176R0001
12	HBTB316231P0001

SET OF COMPLETE PLUG/PLUG 4P/40 SOCKET'N' INDOOR
HBTB315176R0112