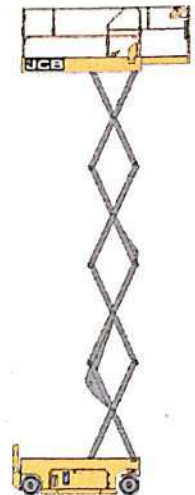
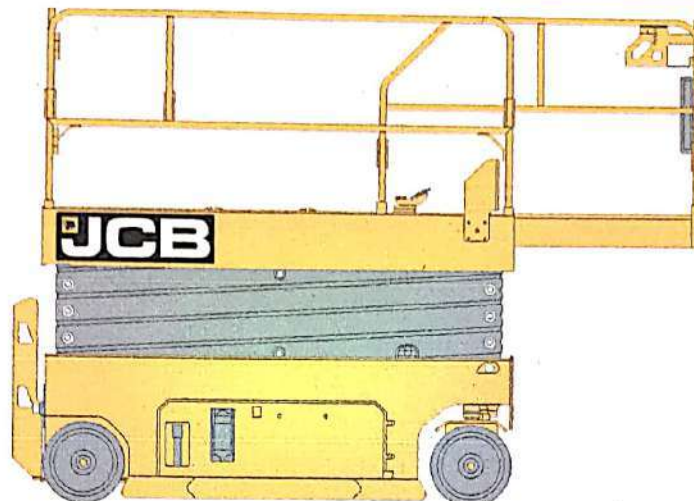
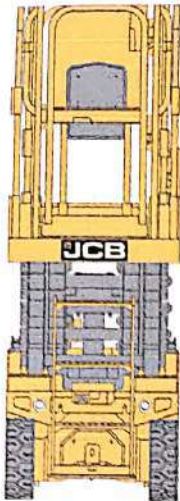


DIMENSIONS



DIMENSIONS – ELECTRIC SCISSORS

Model		S1530E	S1930E	S2032E	S2046E	S2632E	S2646E	S3246E	S4046E	S4550E
Max. platform height	m (ft-in)	4.6 (15-1)	5.8 (19-0)	6.3 (20-8)	6.3 (20-8)	8.1 (26-6)	8.1 (26-6)	10 (32-9)	11.9 (39-0)	13.8 (45-3)
Max. working height	m (ft-in)	6.6 (21-1)	7.8 (25-0)	8.3 (26-8)	8.3 (26-8)	10.1 (32-6)	10.1 (32-6)	12 (38-9)	13.9 (45-0)	15.8 (51-0)
Extension outreach	m (in)	0.9 (35)	0.9 (35)	0.9 (35)	0.9 (35)	0.9 (35)	0.9 (35)	0.9 (35)	0.9 (35)	0.9 (35)
Overall length (stowed)	m (ft-in)	1.78 (5-10)	1.78 (5-10)	2.39 (7-10)	2.39 (7-10)	2.39 (7-10)	2.39 (7-10)	2.39 (7-10)	2.39 (7-10)	2.76 (9-1)
Overall width (stowed)	m (ft-in)	0.76 (2-6)	0.76 (2-6)	0.81 (2-8)	1.15 (3-9)	0.81 (2-8)	1.15 (3-9)	1.15 (3-9)	1.15 (3-9)	1.25 (4-1)
Overall height (stowed, guardrail folded)	m (ft-in)	1.84 (6-0)	1.86 (6-1)	1.83 (6-0)	1.83 (6-0)	1.96 (6-5)	1.96 (6-5)	1.86 (6-1)	1.98 (6-6)	2.20 (7-3)
Overall height (stowed, guardrail unfolded)	m (ft-in)	2.11 (6-11)	2.12 (6-11)	2.22 (7-3)	2.22 (7-3)	2.35 (7-8)	2.35 (7-8)	2.48 (8-2)	2.60 (8-6)	2.60 (8-6)
Overall weight	kg (lb)	1330 (2932)	1526 (3364)	1834 (4044)	2134 (4705)	1972 (4546)	2528 (5574)	2646 (5834)	2996 (6606)	3366 (7422)

KEY SPECIFICATIONS – ELECTRIC SCISSORS

Model		S1530E	S1930E	S2032E	S2046E	S2632E
Platform size (L x W x H)	m	1.64 x 0.76 x 1.1	1.64 x 0.76 x 1.1	2.25 x 0.81 x 1.1	2.25 x 1.15 x 1.1	2.25 x 1.15 x 1.1
	in	65 x 30 x 43	65 x 30 x 43	89 x 32 x 43	89 x 46 x 43	89 x 32 x 43
Load capacity	kg (lb)	280 (615)	230 (505)	380 (840)	550 (1210)	250 (550)
Max. platform occupants (outdoor)	person	1	1	1	2	—
Max. platform occupants (indoor)	person	2	2	2	2	2
Max. allowable side force (indoor)	N (lbf)	400 (90)	400 (90)	400 (90)	400 (90)	400 (90)
Max. allowable side force (outdoor)	N (lbf)	200 (45)	200 (45)	200 (45)	400 (90)	—
Max. allowable wind speed (outdoor)	m/s / mph	12.5 / 28	12.5 / 28	12.5 / 28	12.5 / 28	—
Max. allowable slope (front/back)	degrees	3	3	3	3	3
Max. allowable slope (side/side)	degrees	1.5	1.5	1.5	1.5	1.5
Ground clearance (stowed)	m (in)	0.07 (2.75)	0.07 (2.75)	0.1 (4)	0.1 (4)	0.1 (4)
Wheelbase	m (in)	1.33 (52)	1.33 (52)	1.85 (73)	1.85 (73)	1.85 (73)
Turning radius (outside)	m (ft-in)	1.49 (4-11)	1.49 (4-11)	2.1 (6-11)	2.35 (7-8)	2.1 (6-11)
Turning radius (inside)	m (in)	0.04 (1.5)	0.04 (1.5)	0	0	0
Gradeability	%	30	25	25	25	25
Max driving speed (stowed)	km/h (mph)	3.2 (2)	3.2 (2)	3.2 (2)	3.2 (2)	3.2 (2)
Max driving speed (raised)	km/h (mph)	0.8 (0.5)	0.8 (0.5)	0.8 (0.5)	0.8 (0.5)	0.8 (0.5)
Rising speed (loaded)	s	15–20	15–20	25–30	25–30	30–35
Lowering speed (loaded)	s	28–33	25–30	30–35	30–35	35–40
Solid tyre dimensions	mm (in)	305 x 115 (12 x 4.5)	305 x 115 (12 x 4.5)	380 x 125 (15 x 5)	380 x 125 (15 x 5)	380 x 125 (15 x 5)
Hydraulic oil tank vol.	L (gal)	14 (3.7)	14 (3.7)	14 (3.7)	14 (3.7)	14 (3.7)
Hydraulic system tank vol.	L (gal)	18 (4.75)	18 (4.75)	18 (4.75)	18 (4.75)	18 (4.75)
Hydraulic system pressure	Mpa	24	24	24	24	24
Battery	Ah	6V x 4 (225)	6V x 4 (225)	6V x 4 (225)	6V x 4 (225)	6V x 4 (225)
Power unit	VDC (kW)	24 (3.3)	24 (3.3)	24 (3.3)	24 (3.3)	24 (3.3)
Input voltage of Charger	VAC	100–240	100–240	100–240	100–240	100–240
Output voltage of Charger	A	25	25	25	25	25
Drive and steer model		2, front-wheel	2, front-wheel	2, front-wheel	2, front-wheel	2, front-wheel
Brake		2, rear-wheel	2, rear-wheel	2, rear-wheel	2, rear-wheel	2, rear-wheel

Signature Not Verified
Access jcb.com

Digitally signed by
SHIVA KUMAR
Date: 2026.07.27
04:04:58 PST
Reason: IREPS-CRIS
Location: New Delhi

KEY SPECIFICATIONS – ELECTRIC SCISSORS

Model		S2646E	S3246E	S4046E	S4550E
Platform size (L x W x H)	m	2.25 x 1.15 x 1.1	2.25 x 1.15 x 1.1	2.25 x 1.15 x 1.1	2.64 x 1.25 x 1.1
	in	89 x 46 x 43	89 x 46 x 43	89 x 46 x 43	104 x 50 x 43
Load capacity	kg (lb)	450 (990)	320 (705)	320 (705)	227 (500)
Max. platform occupants (outdoor)	person	2	1	1	–
Max. platform occupants (indoor)	person	2	2	2	2
Max. allowable side force (indoor)	N (lbf)	400 (90)	400 (90)	400 (90)	400 (90)
Max. allowable side force (outdoor)	N (lbf)	400 (90)	200 (45)	200 (45)	–
Max. allowable wind speed (outdoor)	m/s / mph	12.5 / 28	12.5 / 28	12.5 / 28	–
Max. allowable slope (front/back)	degrees	3	3	3	3
Max. allowable slope (side/side)	degrees	1.5	1.5	1.5	1.5
Ground clearance (raised)	m (in)	0.1 (4)	0.1 (4)	0.1 (4)	0.1 (4)
Wheelbase	m (in)	1.85 (73)	1.85 (73)	1.85 (73)	2.22 (87)
Turning radius (outside)	m (ft-in)	2.35 (7-8)	2.35 (7-8)	2.35 (7-8)	2.56 (8-5)
Turning radius (inside)	m (in)	0	0	0	0
Gradeability	%	25	25	25	25
Max driving speed (stowed)	km/h (mph)	3.2 (2)	3.2 (2)	3.2 (2)	3.2 (2)
Max driving speed (raised)	km/h (mph)	0.8 (0.5)	0.8 (0.5)	0.8 (0.5)	0.8 (0.5)
Rising speed (loaded)	Seconds	30–35	53–58	63–68	75–85
Falling speed (loaded)	Seconds	35–40	40–45	45–50	55–63
Solid tyre dimensions	mm (in)	380 x 125 (15 x 5)	380 x 125 (15 x 5)	380 x 125 (15 x 5)	380 x 125 (15 x 5)
Hydraulic oil tank vol.	L (gal)	14 (3.7)	14 (3.7)	16 (4)	16 (4)
Hydraulic system tank vol.	L (gal)	18 (4.75)	22 (5.8)	22 (5.8)	25 (6.6)
Hydraulic system pressure	Mpa	24	24	24	24
Battery	Ah	6V x 4 (240)	6V x 4 (240)	12V x 4 (150)	12V x 4 (150)
Power unit	V DC (kW)	24 (3.3)	24 (3.3)	24 (3.3)	24 (4.5)
Input voltage of Charger	V AC	100–240	100–240	100–240	100–240
Output voltage of Charger	A	25	25	25	25
Drive and steer model		2, front-wheel	2, front-wheel	2, front-wheel	2, front-wheel
Brake		2 rear-wheel	2 rear-wheel	2 rear-wheel	2 rear-wheel

Signature Not
Verified

Digitally signed by
SHIVA KUMAR
Date: 2026.07.27
04:04:58 +05'30
Reason: I am a PS-CRIS
Location: New Delhi

