

—

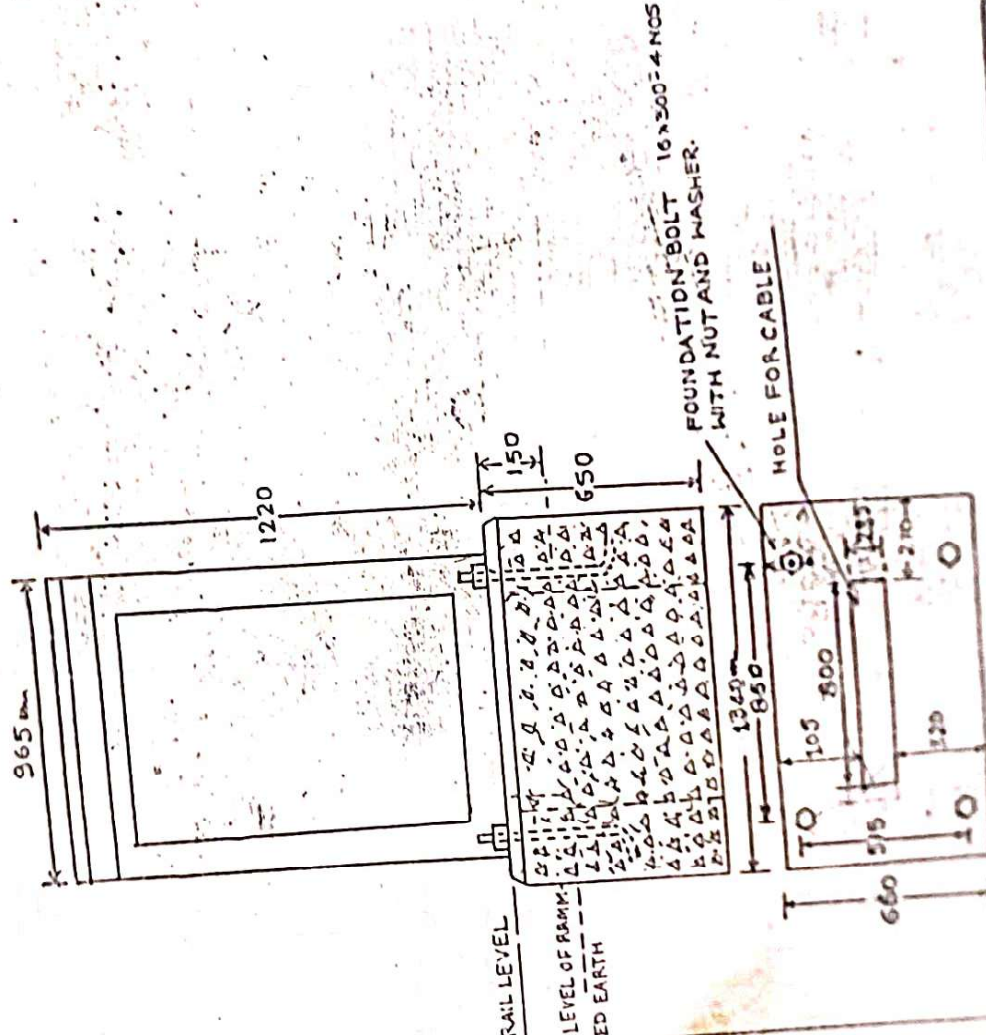
1. ALL DIMENSIONS SHOULD BE CALLED.
2. FOUNDATION BOLTS
THE FOUNDATION SHOULD BE PLASTERED WITH 1:4 CEMENT
THE SURFACE SHOULD BE PLASTERED WITH 1:4 CEMENT.
3. OUTER SURFACE SHOULD BE PLASTERED WITH 1:4 CEMENT
SAND UP TO 300 FROM THE TOP OF THE SURFACE.
SAND UP TO 300 FROM THE TOP OF THE SURFACE.
4. ON ALL SIDES EARTH SHOULD BE RAMMED UP TO THE
LEVEL SHOWN IN THE SKETCH.
SAND UP TO 300 FROM THE TOP OF THE SURFACE.
5. FOUNDATION WITH MIXTURE OF CEMENT SAND AND
STONE CHIPS.
SAND UP TO 300 FROM THE TOP OF THE SURFACE.

This Dog should used for all future
Tenders (also also introduced in
Standard Schedule - 80% code of
ASIE/Can/ccc

8000

1000

COMBESDES DRG No. - S & T - C-33 (115)



THIS TAG SHOULD BE USED ONLY IN TENDER

APPROVED	CHECKED	DRAWN	S-K-NO. 1 S-K-T- C-6/98 (H-F-G)
[Signature] [Signature]	[Signature] [Signature]	[Signature] [Signature]	