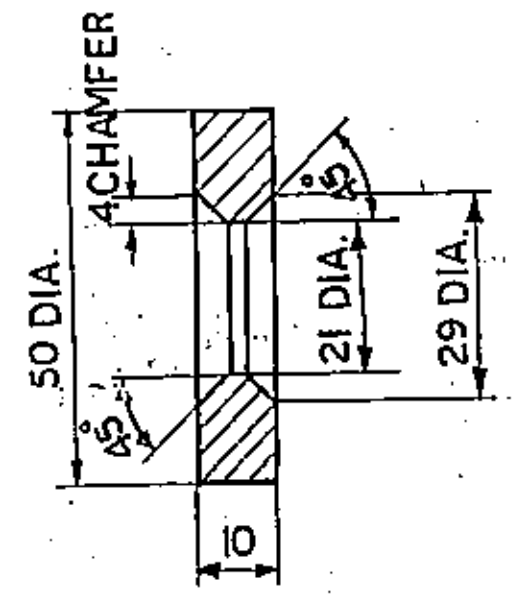
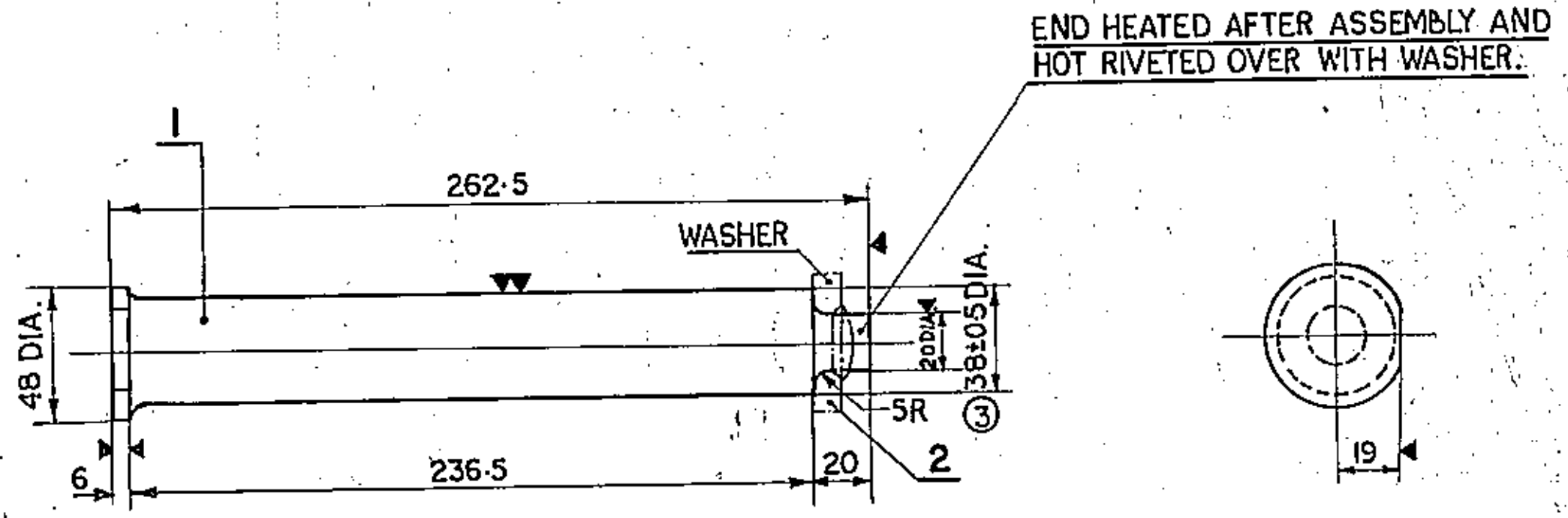


ACCEPTED VIDE LETTER NO. MW/CPL/TG OF 15/16.5.69

\* ROUGHNESS NOS. IN MICRONS.

ROUGH MACHD.  
\* 40 TO 80  
FINISH MACHD.  
\* 16 TO 40



DETAIL OF WASHER

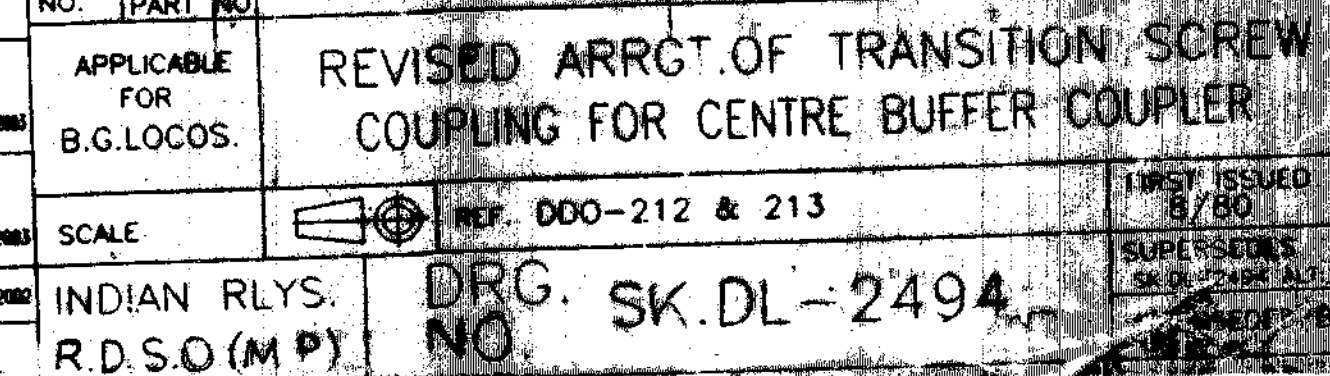
NOTE:-

PIN TO BE FITTED ON TO THE COUPLER FROM TOP & RIVETED OVER AT THE BOTTOM.

F.D.S.W.	S.D.A./COM	TR

④	2	WD-97039	MATERIAL UPDATED.	9/97
③	1	WD-7624	MACHINING & TOLERANCE INDICATED	7/76
ALT.	ITEM	AUTH	DESCRIPTION	DATE

(4)	2	WASHER	1	-	-	IS:2062 F.4.10.VA		
	1	PIN	1	-	-	IS:1875CL.5 OR AAR.M112		
ITEM		DESCRIPTION & DIMENSIONS	NO. OF	REF. DRG.	WT. OF ONE (KGS)	MAT. ASPEC	REMARK	
SUPERSEDED BY:-			CLEVIS PIN WITH WASHER (FOR TRANSITION CBC) 4-2					
SUPERSEDES WGI-00254								
DATE								
SCALE	PASSED	SL. SAKEN						5/69
1:1	CHECKED	-S.d-						5/69
1:2	DRAWN	SACIYVA						5/69
TRACED		R. SAKEN	5/69					
J. SHIM								
9/97	R.D.S.O.		GROUP	SK.69508				
7/76	B.G.	[W]						
DATE								





ITEM NO.-1

ITEM NO.-2

ITEM NO.-3

ITEM NO.-10

88.6  
THREAD

ITEM NO.-5

ITEM NO.-4

ITEM NO.-9

ITEM NO.-6

ITEM NO.-12

DETAILS OF KNUCKLE THREADS(L.H.)

DETAILS OF KNUCKLE THREADS(R.H.)

NOTE:-

1. FOR ARRANGEMENT DRAWING REFER TO DRC NO. SK.DI-2494  
\* 2. STAMP  
a. MONTH & YEAR  
b. TRADE MARK  
c. SK.DI-2495  
d. IS:5517-93  
(11) 3. FOR HEAT-TREATMENT AND OTHER REQUIREMENTS REFER TO SCHEDULE OF TECHNICAL REQUIREMENTS SPEC.NO.MP-0.41.00.01,REV.01 OF APRIL 2003.  
(12)

Received on 24.7.03  
in response to Lett. No.  
E/24/HK dt. 18.7.2003

13	HOOK	1	IS-2082-99 G.B. (KILLED)	
12	CHAIN WIRE 5 DIA X 150 LONG APPROX.	1		
11	EYE HOOK	1	"	
10	WASHER (FOR TRUNNION SCREW)	1	"	
9	STOP WASHER (FOR SCREW)	1	"	
8	WASHER (FOR TRUNNION NUT)	2	"	
7	WASHER FOR [REDACTED]	4	IS-2082-99 G.B. (KILLED)	
6	OPERATING HANDLE COMPLETE	1	IS-5517-93 G. YOUNG (G)	HEAT TREAT
5	TRUNNION NUT	1	"	21
4	SCREW	1	"	22
3	TRUNNION SCREW	1	"	23
2	SHACKLE LONG	1	IS-5517-93 G. YOUNG (G)	24
1	SHACKLE SHORT	1	IS-5517-93 G. YOUNG (G)	25

REF. NO.		IR PART NO.		DESCRIPTION		NO. OF SHEETS		MT. (KG) EACH		MATERIAL & SPEC.		REMARKS	
(12)	3	LETTER SKETCH DRAWING OF SCREW NUT TYPE DELIVERED 14.02.1973 BY 1407/1973 OF INDIAN RLYS. NUT TYPE DELIVERED 14.02.1973 BY 1407/1973 WAS STAMPED IN NOTE 3. APPROVED WAS FEB 14.02.1973 DRAWING OF SCREW NUT TYPE DELIVERED 14.02.1973 BY 1407/1973 WAS STAMPED IN NOTE 3. APPROVED WAS FEB 14.02.1973 DRAWING OF SCREW NUT TYPE DELIVERED 14.02.1973 BY 1407/1973 WAS STAMPED IN NOTE 3. APPROVED WAS FEB 14.02.1973		L2-886	BLANKET SA/-	11.02.2003	APPLICABLE FOR B.G.LOCOS.		DETAILS OF MODIFIED TRANSITION SCREW COUPLING FOR CENTRE BUFFER COUPLER				
(11)	5	LETTER SKETCH DRAWING OF SCREW NUT TYPE DELIVERED 14.02.1973 BY 1407/1973 OF INDIAN RLYS. NUT TYPE DELIVERED 14.02.1973 BY 1407/1973 WAS STAMPED IN NOTE 3. APPROVED WAS FEB 14.02.1973 DRAWING OF SCREW NUT TYPE DELIVERED 14.02.1973 BY 1407/1973 WAS STAMPED IN NOTE 3. APPROVED WAS FEB 14.02.1973 DRAWING OF SCREW NUT TYPE DELIVERED 14.02.1973 BY 1407/1973 WAS STAMPED IN NOTE 3. APPROVED WAS FEB 14.02.1973		L2-882	BLANKET SA/-	11.02.2003	SCALE		REF. DDD-212 & 213				FIRST ISSUED 8/80
(10)	—	DRAWING REVISED & REBORN.		L2-805	BLANKET SA/-	01.02.2000	INDIAN RLYS. R.D.S.O.(M.P)		DRG. SK.DL-2495				SUPERSEDED BY SK.DL-2495
ALT.	NO. OF PLACES	REF. NO.	DESCRIPTION	ALT. NOTE NO.	SIGN.	DATE							SUPERSEDED BY SK.DL-2495





भारत सरकार-रेल मंत्रालय  
अनुसंधान अभिकल्प औरमानक संगठन  
लखनऊ- 226011

E-mail: [dse4group@gmail.com](mailto:dse4group@gmail.com)

Telephone : 2465754 & 42226 (Rly)

Government of India - Ministry of Railways  
Research, Designs & Standards  
Organization, LUCKNOW - 226011



No. EL/3.2.119 (CBC)

Date: As signed

**Principal Chief Electrical Engineer,**

1. Central Railway, Mumbai, CST-400 001.
2. East Central Railway, Hazipur-844101.
3. East Coast Railway, Chandrashekharpur, Bhubaneswar-751016.
4. Eastern Railway, Fairlie Place, Calcutta-700001.
5. North Central Railway, Block-A, Subedarganj, Allahabad- 211033.
6. Northern Railway, Baroda House, New Delhi-110001.
7. North Eastern Railway, Gorakhpur-273001.
8. South Central Railway, Secunderabad-500 071.
9. South East Central Railway, Bilaspur-495004.
10. South Eastern Railway, Garden Reach, Calcutta-700 043.
11. Southern Railway, Park Town, Chennai-600 003.
12. South Western Railway, Hubli-580020.
13. West Central Railway, Jabalpur-482001.
14. Western Railway, Churchgate, Mumbai-400 020
15. North East Frontier Railway, Malegaon, Guwahati-781011
16. North Western Railway, Jaipur- 302 006
17. Chittaranjan Locomotive Works, Chittaranjan - 713 331
18. Banaras Locomotive Works, Varanasi- 221004
19. Patiala locomotive Works, Patiala- 147 003

**Sub.:** Provision of locking arrangement in drawing no. SKDL-4809, Alt-0 for Top Operated CBC.

In reference to subject above, drawing no. SKDL-4809, Alt-0 for Top Operated CBC has been revised in order to enable the locking by means of Lock retraction pin in-line with the locking arrangement provided in Bottom Operated CBC (drawing no. SKDL-3430).

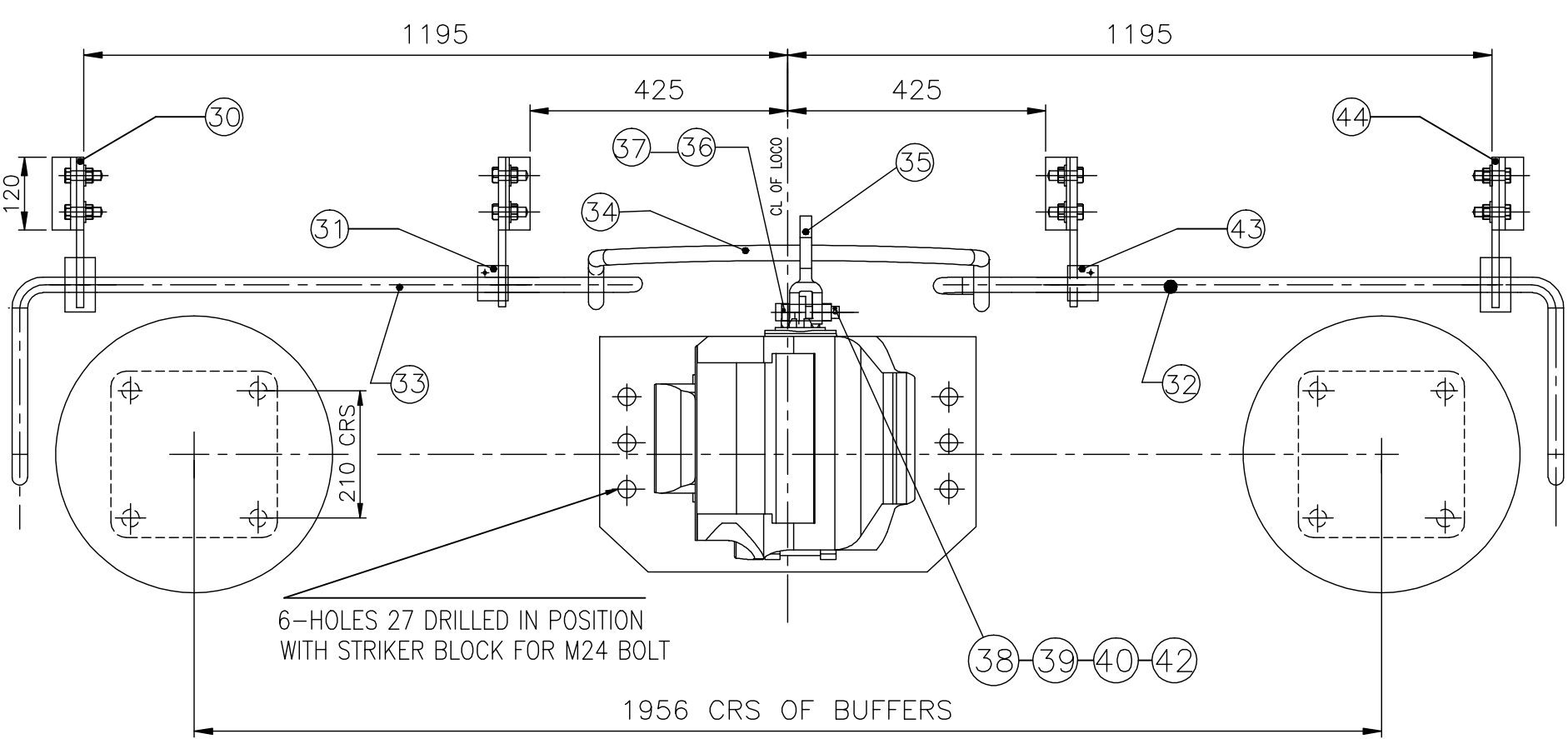
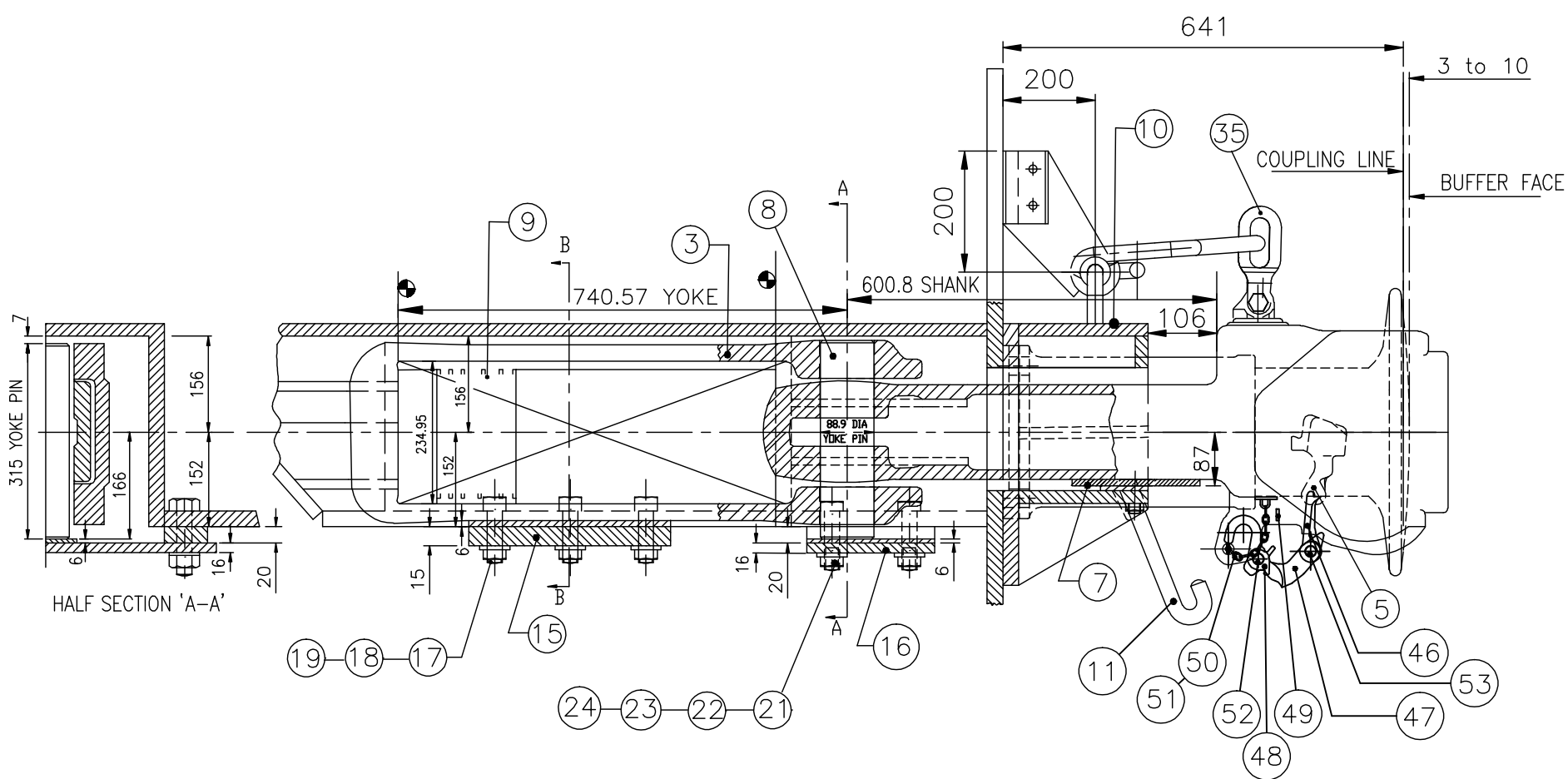
ZRs/PUs are advised to retrofit the item no. 46 to 53 of revised drawing no. SKDL-4809, Alt-1 for Top Operated CBC in the existing Top Operated CBC supplied according to drawing no. SKDL-4809, Alt-0.

The revised drawing is attached herewith for reference please.

**Encl.:** As above


*Wid*  
02.05.2026

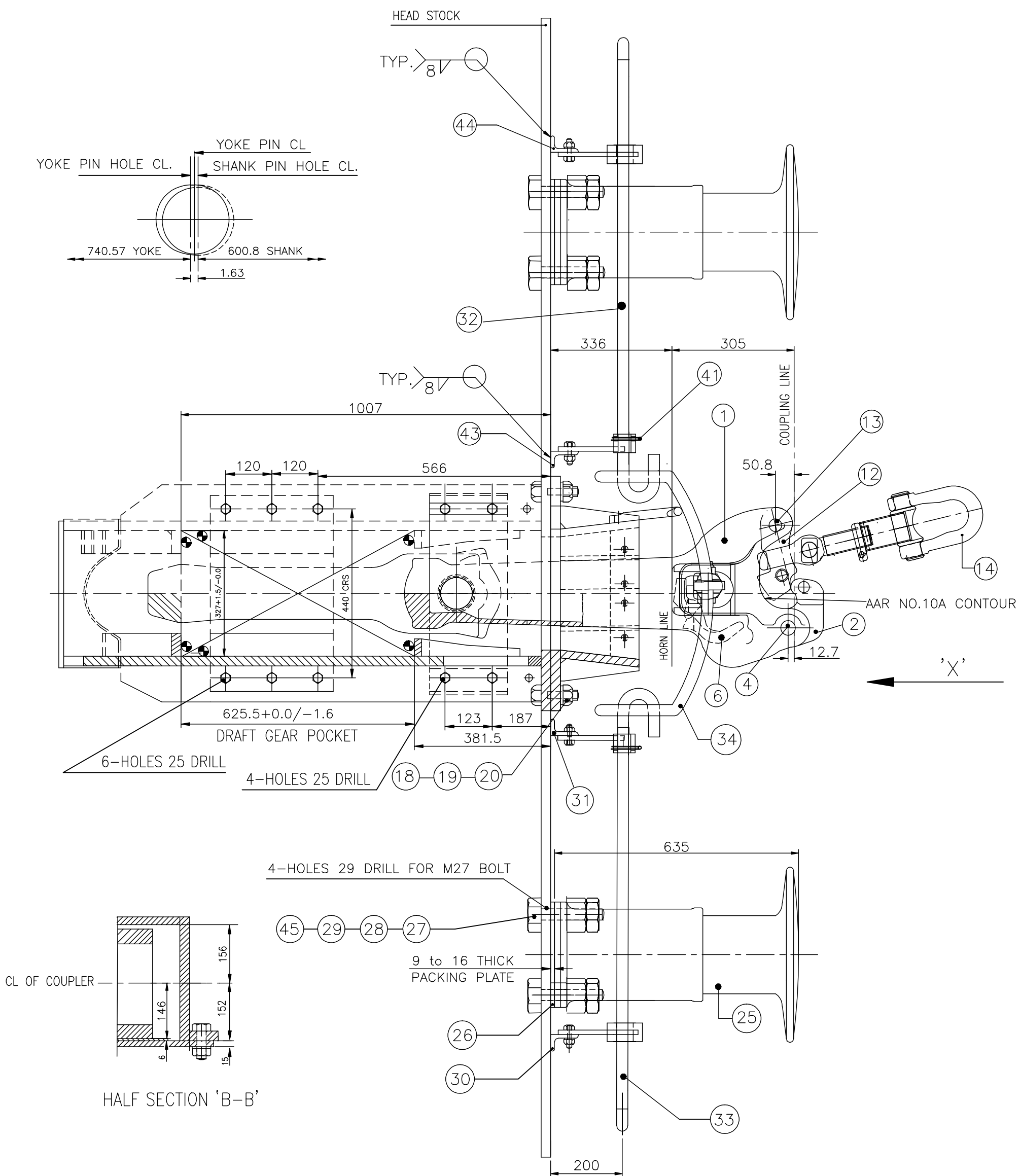
(Nirdosh Kumar Gupta)  
Director Standard Electrical/Mech.



VIEW LOOKING IN THE DIRECTION OF ARROW 'X'

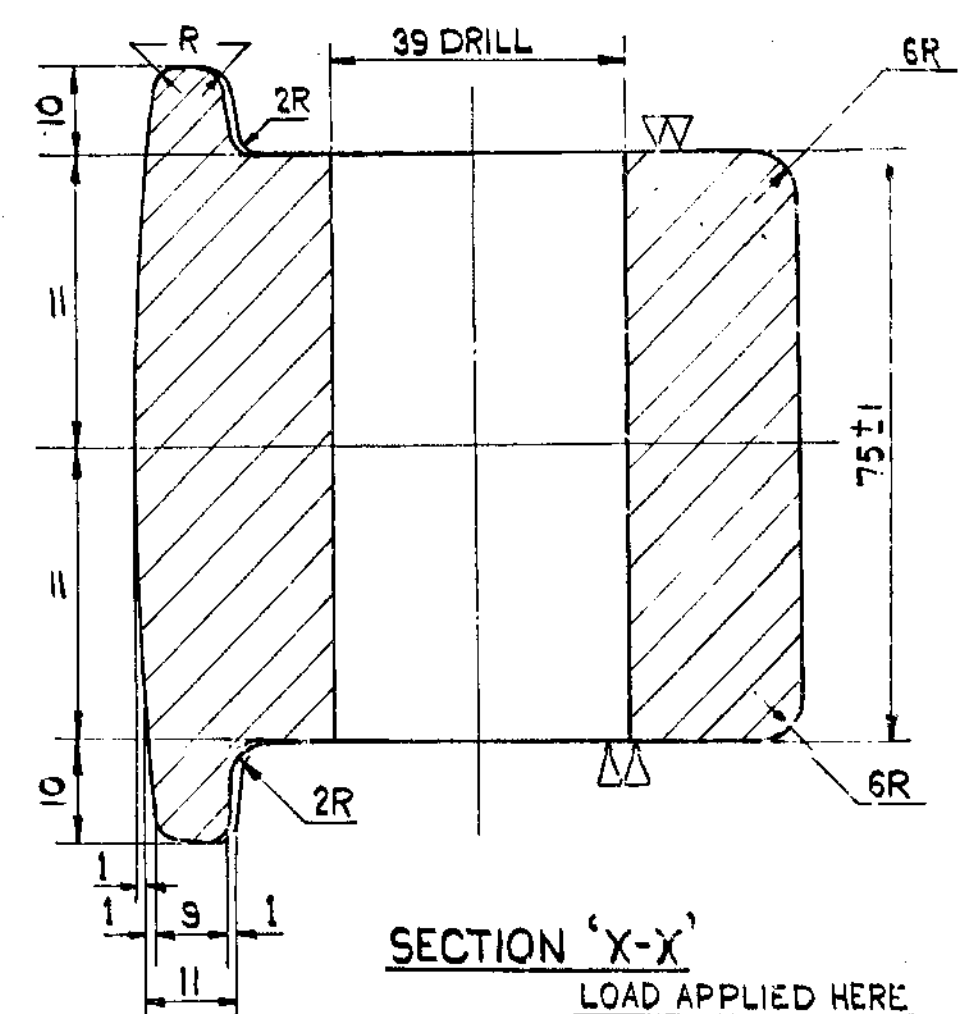
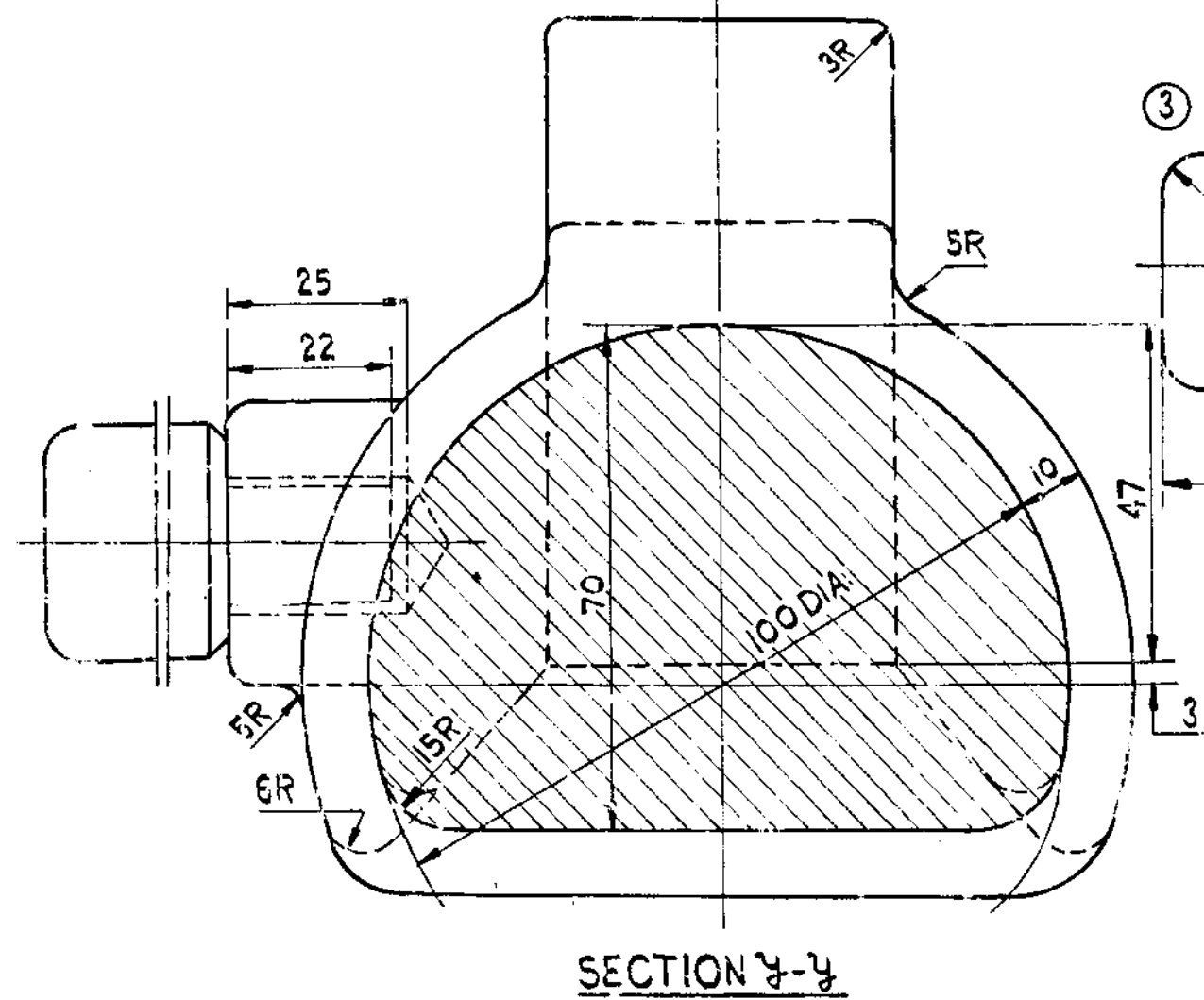
NOTE:-

1. SURFACES MARKED THUS  MUST BE SMOOTH TRUE PARALLEL AND AT RIGHT ANGLES
2. FOR LOCATING DIMENSIONS ON END STRUCTURE FOR THE FITMENT OF TOP OPERATED HANDLES, STRIKER BLOCK & BACK STOPS RELEVANT CONSTRUCTION DRAWINGS OF PARTICULAR LOCO MAY BE REFERRED.
3. MATERIAL & OTHER REQUIREMENTS SHALL BE IN ACCORDANCE WITH THE RDSO STR NO. 56-BD-07 FOR HIGH TENSILE CENTRE BUFFER COUPLER (TRANSITION) FOR B.G. LOCOS.
4. COUPLER BODY & ITS COMPONENTS MARKING DETAILS SHALL BE IN LINE OF STR NO. 56-BD-07 & RDSO DRG NO. SK-62724
5. LATEST ALTERATION OF ALL DRAWINGS AND SPEC/STR (WHICHEVER APPLICABLE)MENTIONED IN THIS ARRANGEMENT DRAWING SHALL BE FOLLOWED.
6. LENGTH OF BOLT ITEM 27 SHALL BE SELECTED DEPENDING ON THICKNESS OF PACKING PLATE & BUFFER BEAM
7. GAUGES TO BE APPLIED TO ALL ITEMS IN ACCORDANCE WITH AAR STANDARD PRACTICE
8. THIS DRAWING IS FOR TOP OPERATED E-TYPE CBC. FOR BOTTOM OPERATED UNCOUPLING ARRANGEMENT PLEASE SEE DRG NO. SKDL-3430
9. FOR FITMENT PROCEDURE OF ITEM 36 & 37, REFER CLW DRG. NO. 1209-02.441-121 & 1209-02.341-124





JS	
D	30.05.2018
T	01.06.2018
C	02.06.2018
TC	03.06.2018



LOAD APPLIED HERE

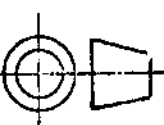
SUPPORT

## SUPPORT

THE CLEVIS SHALL BE ABLE TO WITH STAND A PROOF-  
 (C) LOAD OF 75% WITHOUT ANY DEFORMATION WHEN  
 TESTED IN THE MANNER SHOWN ABOVE.  
 ONE TEST SHALL BE UNDERTAKEN FOR EVERY BATCH  
 OF 200 CLEVISES.

④ 1. TO BE CAST SMOOTH & TRUE.

\* MTL :- AARM-201 (HIGH TENSILE) GRADE 'C'  
STEEL CASTING HEAT TREATED. (QUENCHED AND TEMPERED) ⑥

B		HANDLE	I		STEEL IS: 2062 <sup>CE</sup> GR-B (KILLED)
A		CLEVIS	I		*
ITEM	I.R. PART NO:	DESCRIPTION	NO: OFF	WT: EACH Kg:	MTL: & SPEC:
REF: - R.D.S.O. DRG: NO: D.D.O. - 215		INDIAN RAILWAYS STANDARDS			
SCALE: - 1:1		CLEVIS FOR MODIFIED TRANSITION SCREW COUPLING FOR E.S.C.C. C.B. COUPLER - B.G. LOCOS			
APPD. Sd. O.N.K. FOR DG/R.D.S.O.		R.D.S.O. [MP]			
		DRG. NO SK.DL-2496			