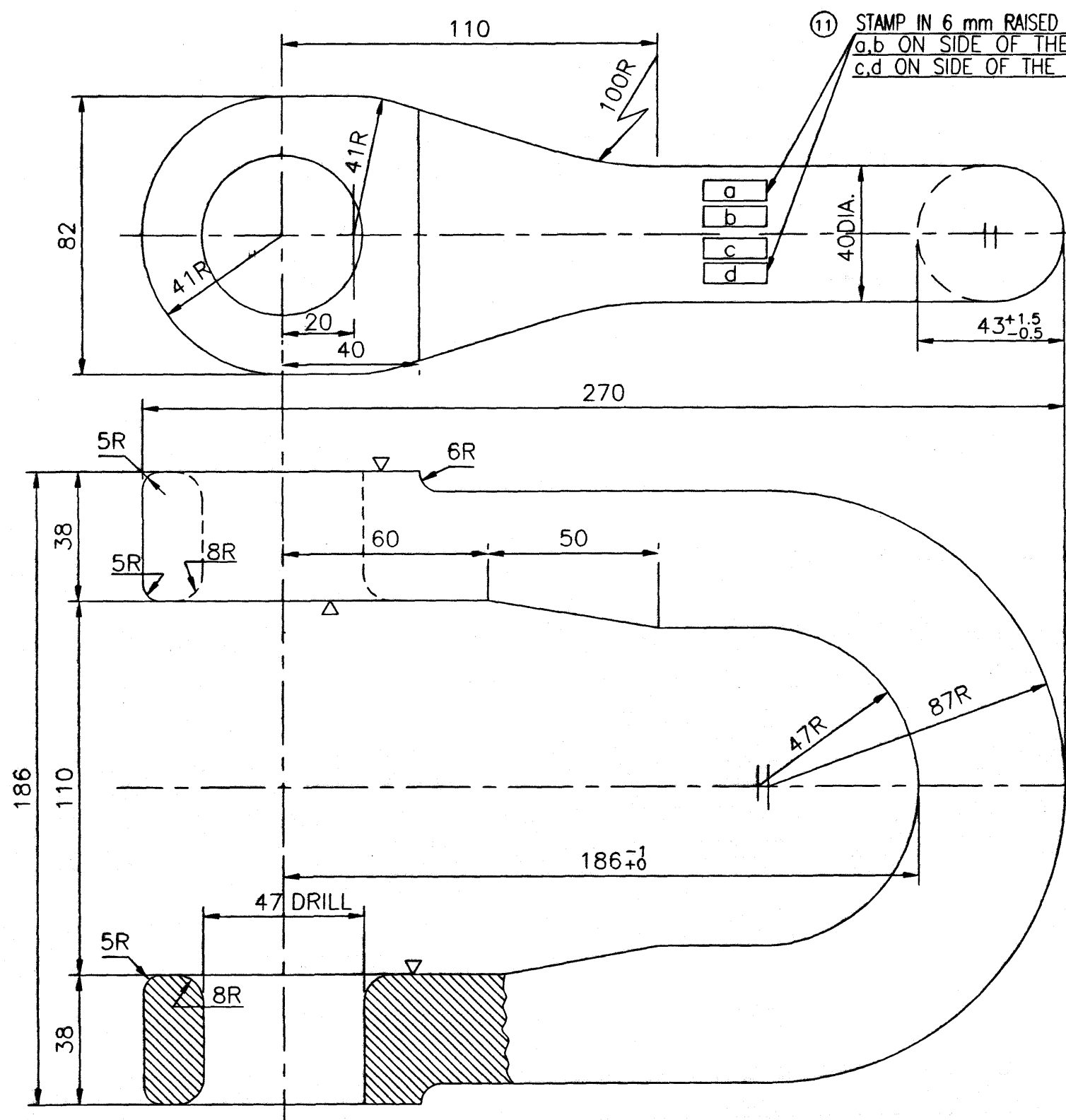
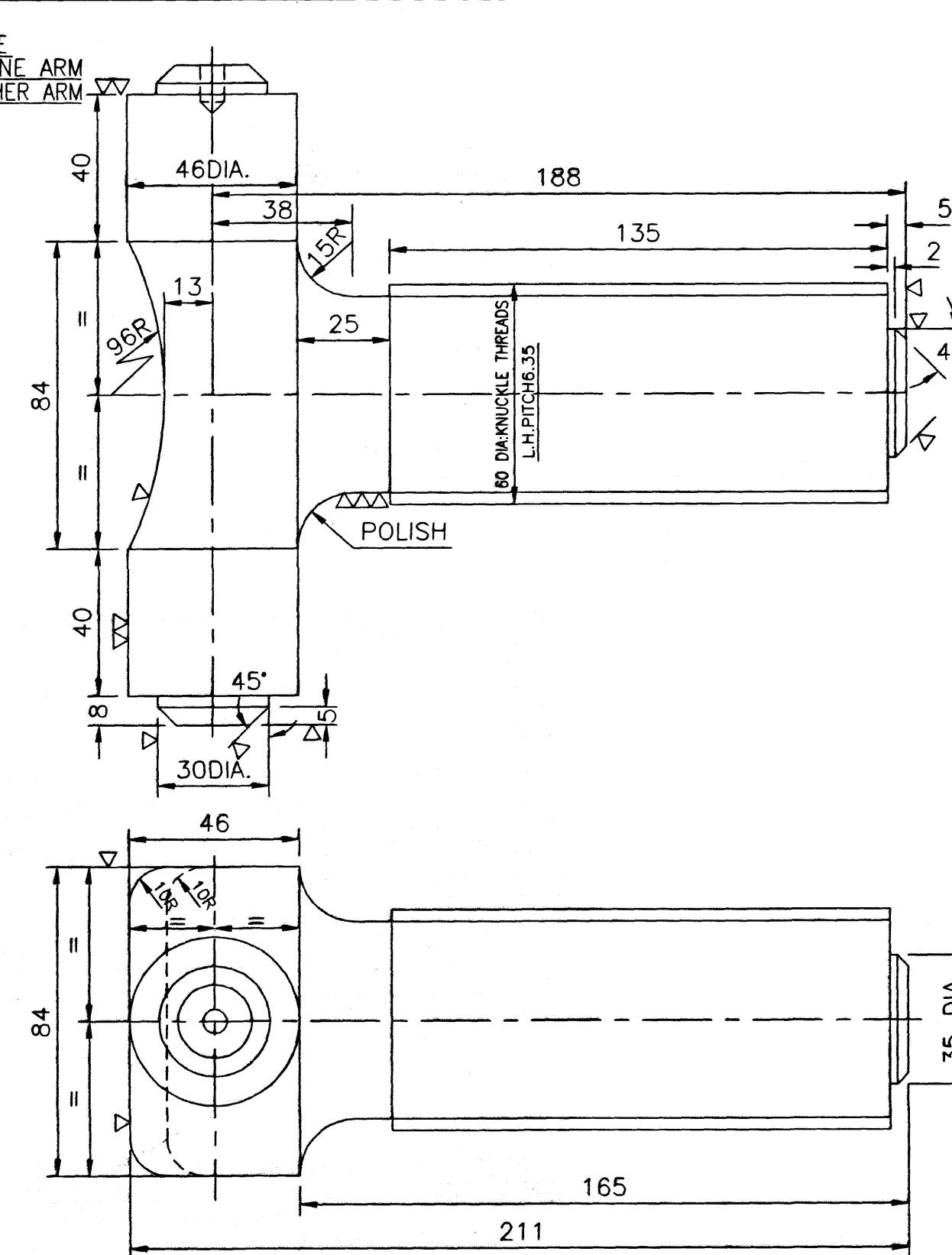


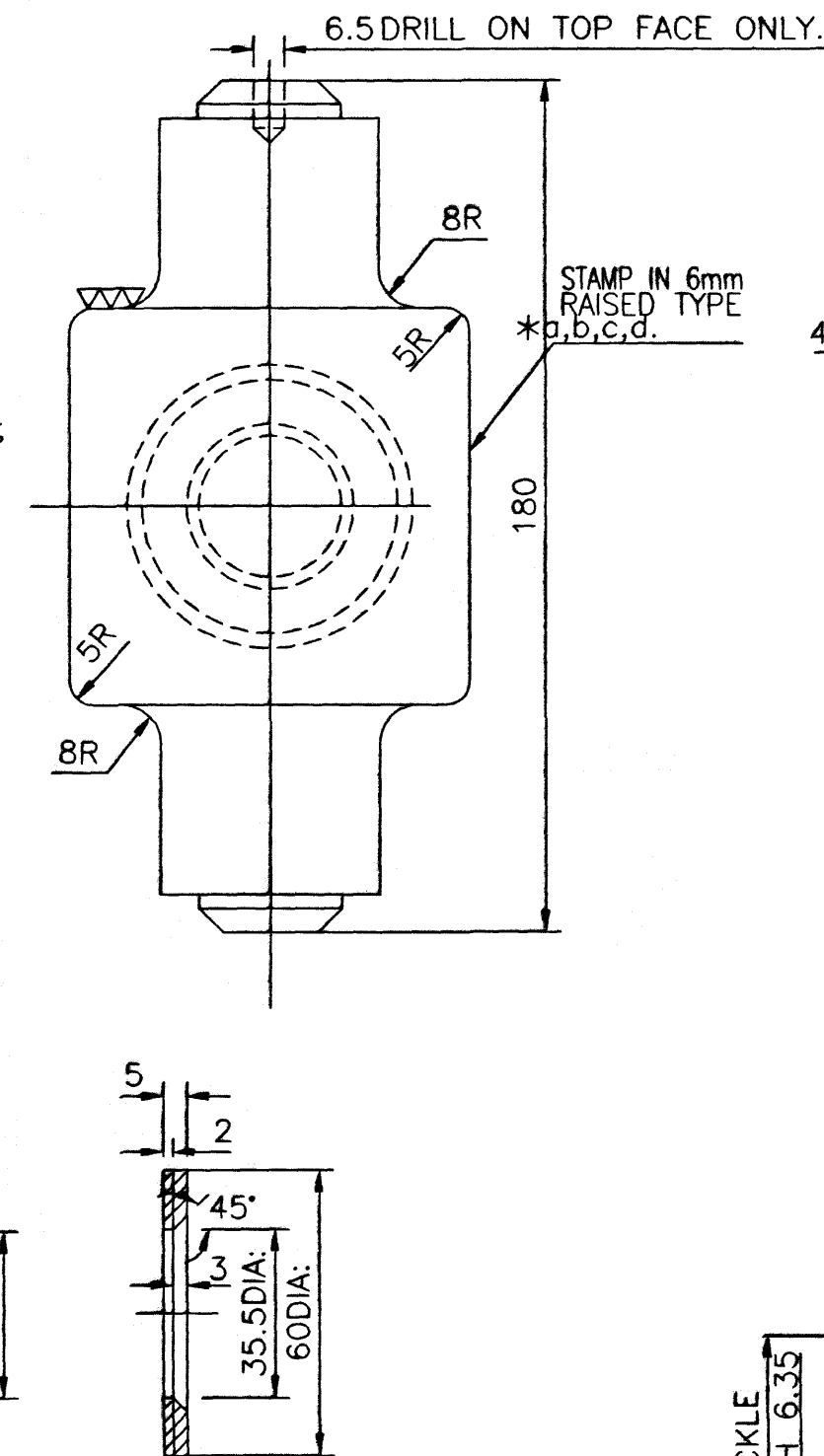
ITEM NO.-1



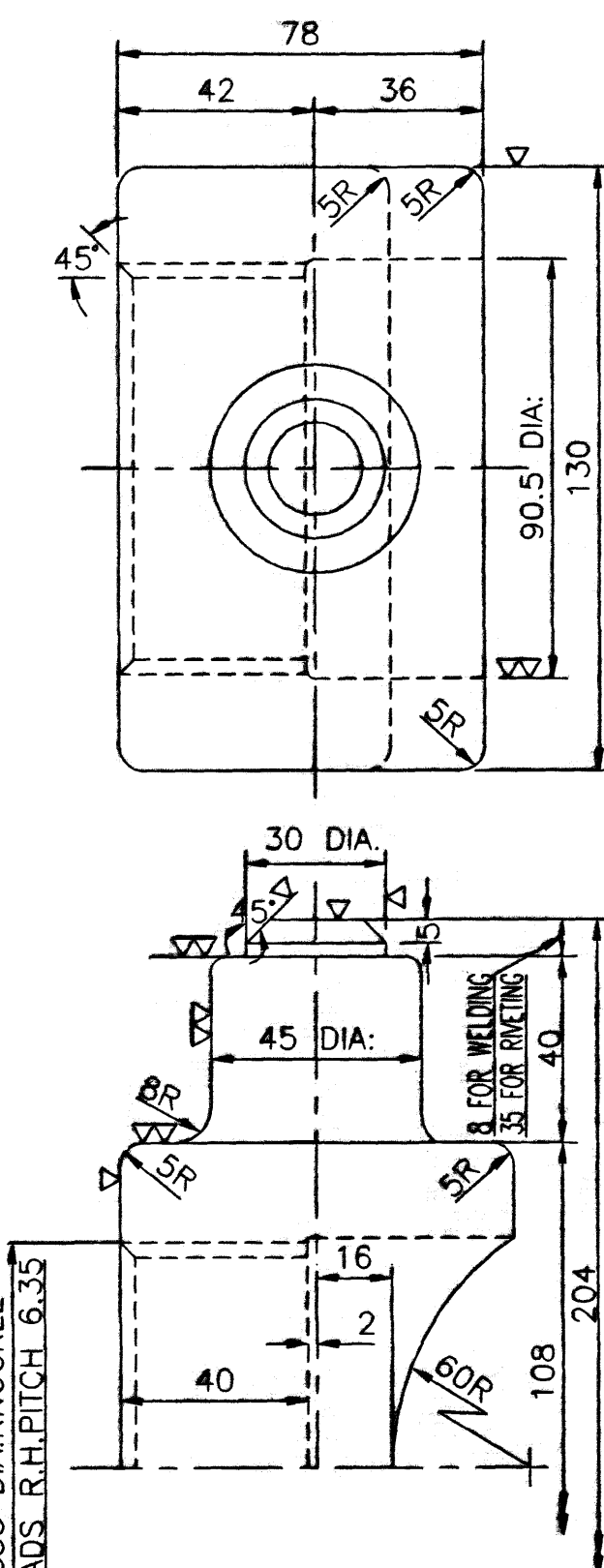
ITEM NO.-2



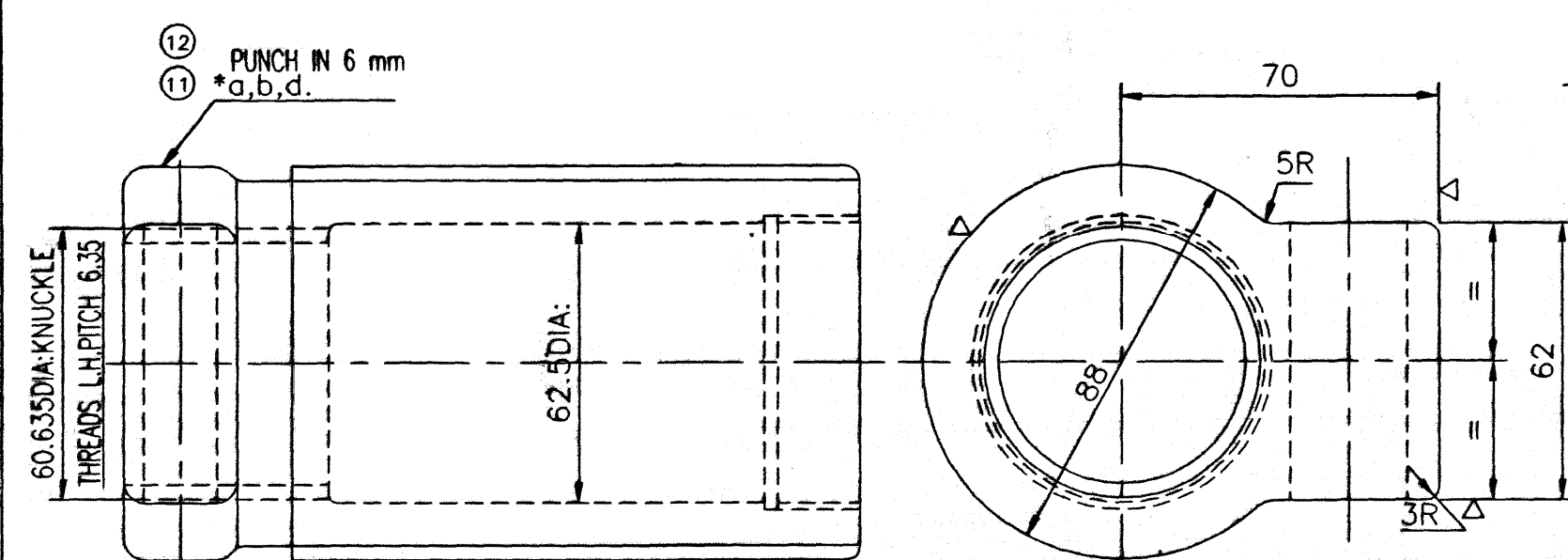
ITEM NO.-3



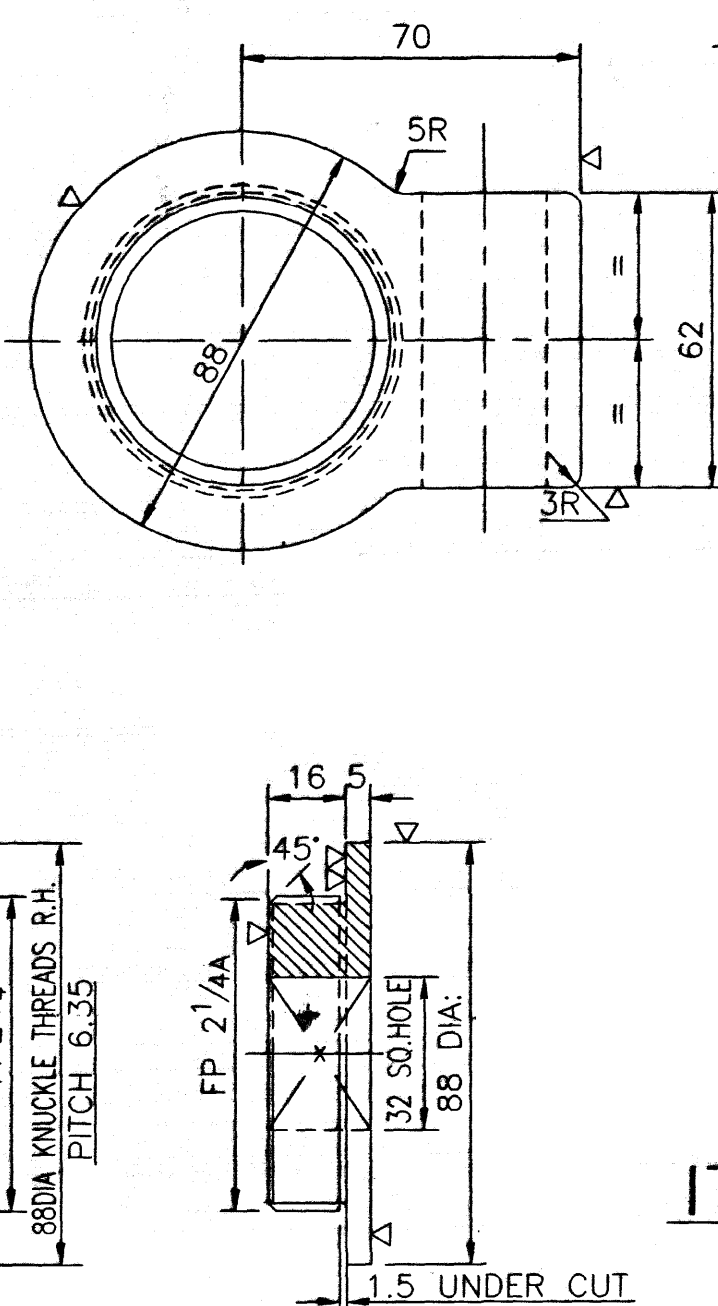
ITEM NO.-10



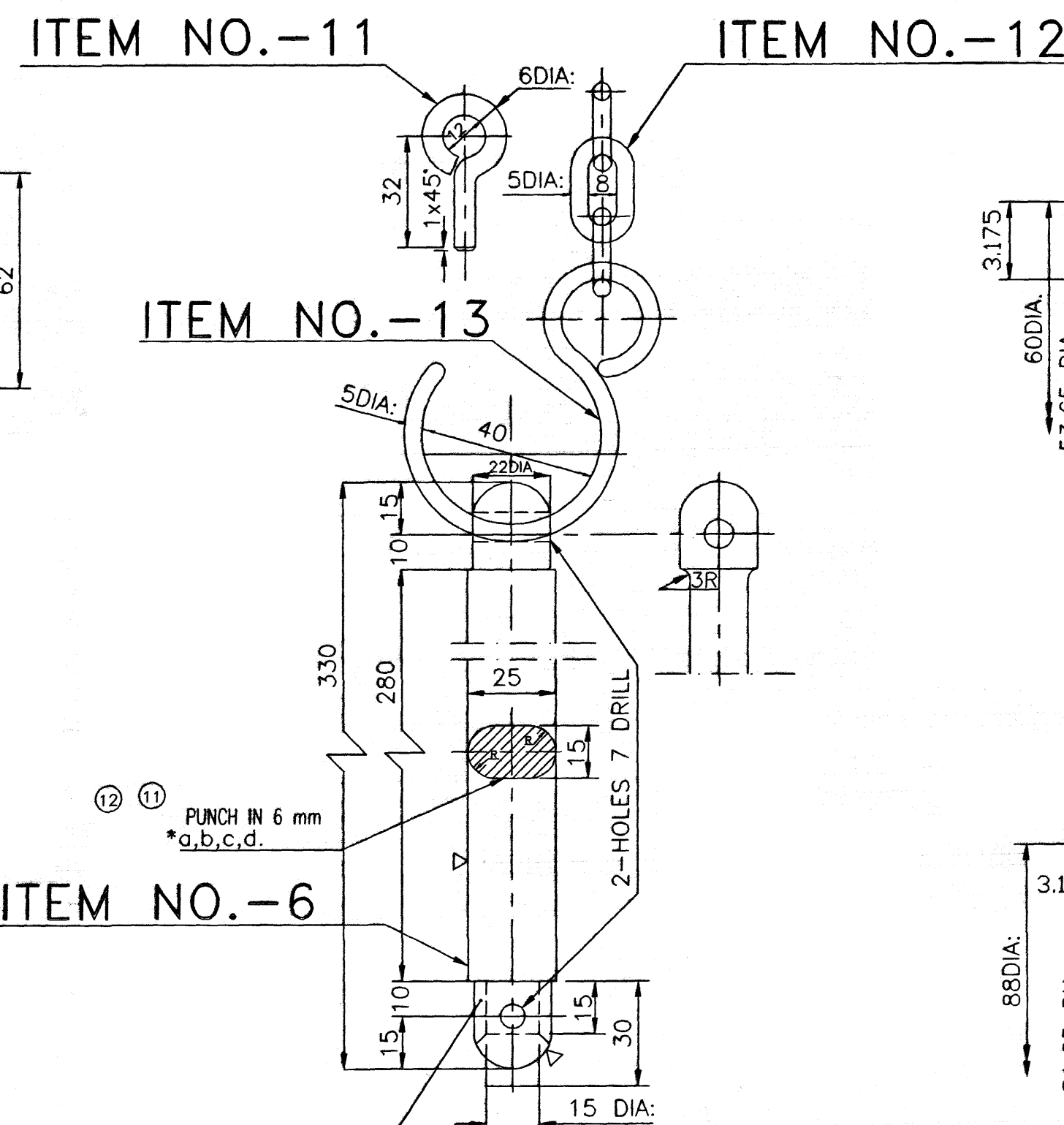
ITEM NO.-5



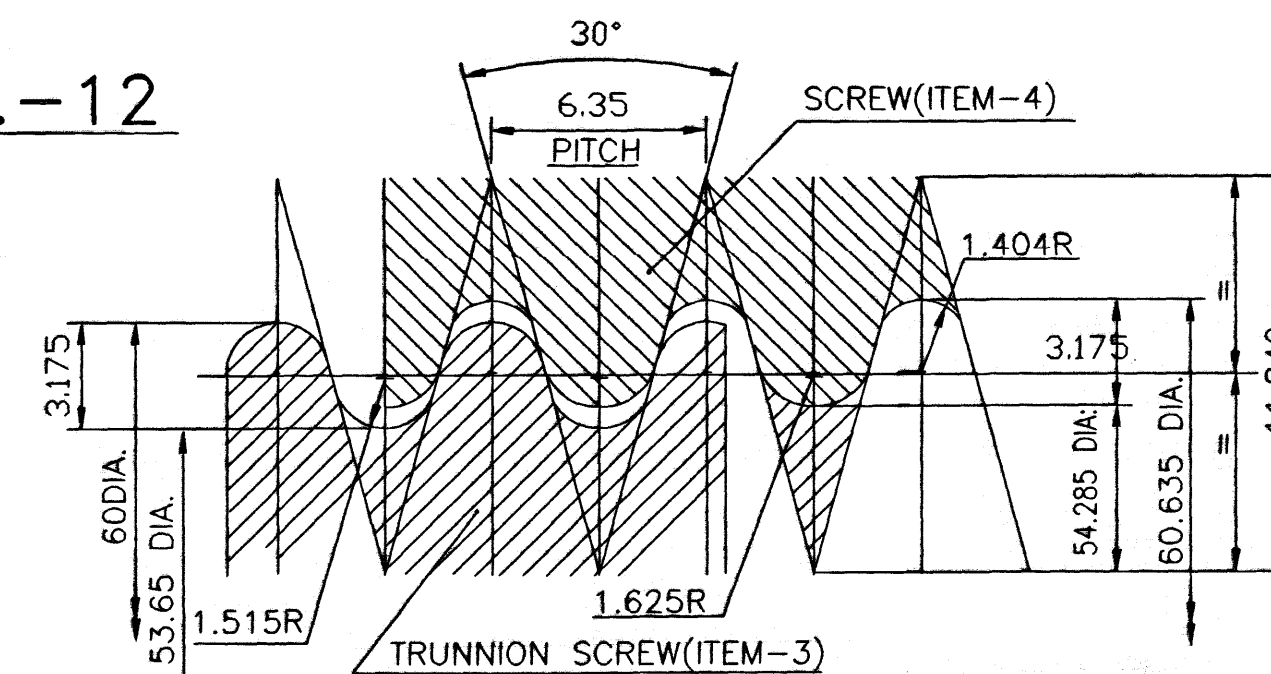
ITEM NO.-4



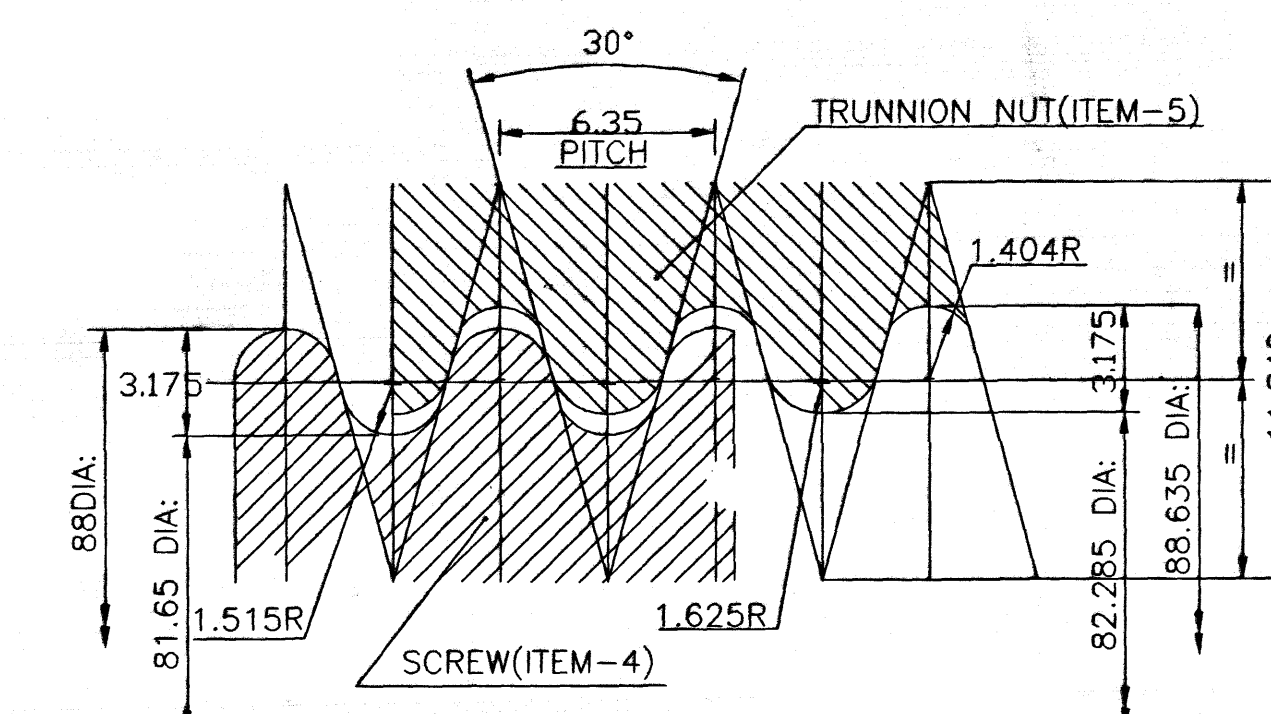
ITEM NO.-9



ITEM NO.-6



DETAILS OF KNUCKLE THREADS (L.H.)



DETAILS OF KNUCKLE THREADS (R.H.)

NOTE:-

- FOR ARRANGEMENT DRAWING REFER TO DRG.NO:SK.DL-2494
- STAMP
 - MONTH & YEAR
 - TRADE MARK
 - SK.DL-2495
 - IS:5517-93
- FOR HEAT-TREATMENT AND OTHER REQUIREMENTS REFER TO SCHEDULE OF TECHNICAL REQUIREMENTS SPEC.NO.MP-0.41.00.01,REV.01 OF APRIL 2003.

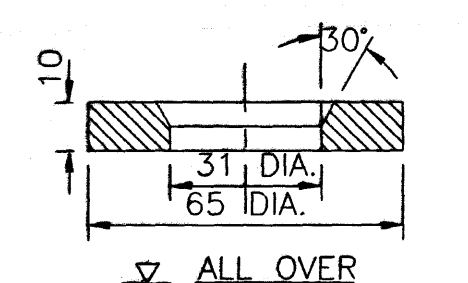
REF. NO.	I.R. PART NO.	DESCRIPTION	NO. OFF	WT.(KG) EACH	MATL.& SPEC.	REMARKS
13		HOOK	1		IS:2062-99 Gr.B (KILLED)	
12		CHAIN WIRE 5 DIA.X150 LONG APPROX.	1		"	
11		EYE HOOK	1		"	
10		WASHER (FOR TRUNNION SCREW)	1		"	
9		STOP WASHER (FOR SCREW)	1		"	
8		WASHER (FOR TRUNNION NUT)	2		"	
7		WASHER (FOR TRUNNION NUT & TRUNNION SCREW)	4		IS:2062-99 Gr.B (KILLED)	
6		OPERATING HANDLE COMPLETE	1		IS:5517-93 Gr.35MnMo3	HEAT TREATED
5		TRUNNION NUT	1		"	
4		SCREW	1		"	
3		TRUNNION SCREW	1		"	
2		SHACKLE LONG	1		"	
1		SHACKLE SHORT	1		IS:5517-93 Gr.35MnMo3	HEAT TREATED
DETAILS OF MODIFIED TRANSITION SCREW COUPLING FOR CENTRE BUFFER COUPLER SCALE REF. DDO-212 & 213 FIRST ISSUED 8/80 INDIAN RLYS. DRG. NO. SK.DL-2495 SUPERSEDES SK.DL-2495 ALT:11 R.D.S.O.(M.P.) NO. SK.DL-2495 SUPERSEDED BY						

REDRAWN
 D. S. K. GUPTA
 S. K. GUPTA
 C. R. LAGNIHOTRI
 ADE. K. M. MISRA
 APPD. N. S. PRASAD
 DT. 04.04.2003

~	50
∇	25
∇∇	6.3
∇∇∇	0.8
∇∇∇∇	0.1
SYMBOL	Ra μm

*SURFACE ROUGHNESS TO IS:3073
 WELDING SYMBOLS TO IS : 813
 TOLERANCES ON UNTOLERANCED DIMENSIONS TO IS:3469

ITEM NO.-7



ITEM NO.-8

ALL OVER
 THIS HANDLE HEAD TO BE MANUFACTURED SEPARATELY AND TO BE INSERTED ON ITEM '6' AFTER ASSEMBLING '6' & '4' END OF ITEM '6' TO BE RIVETTED OVER.