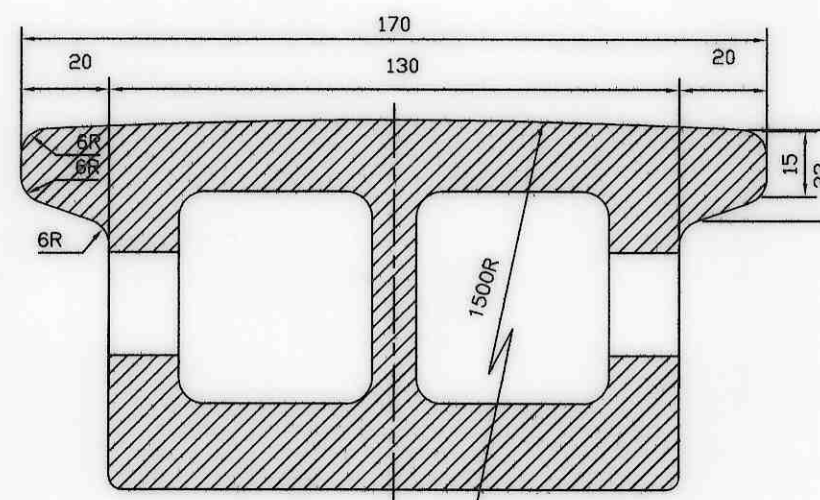
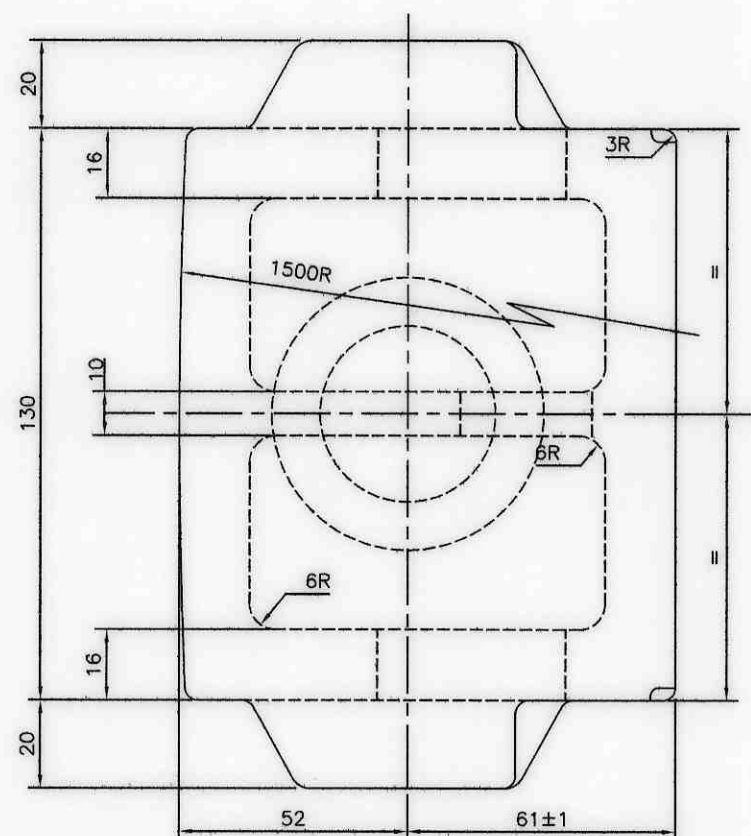
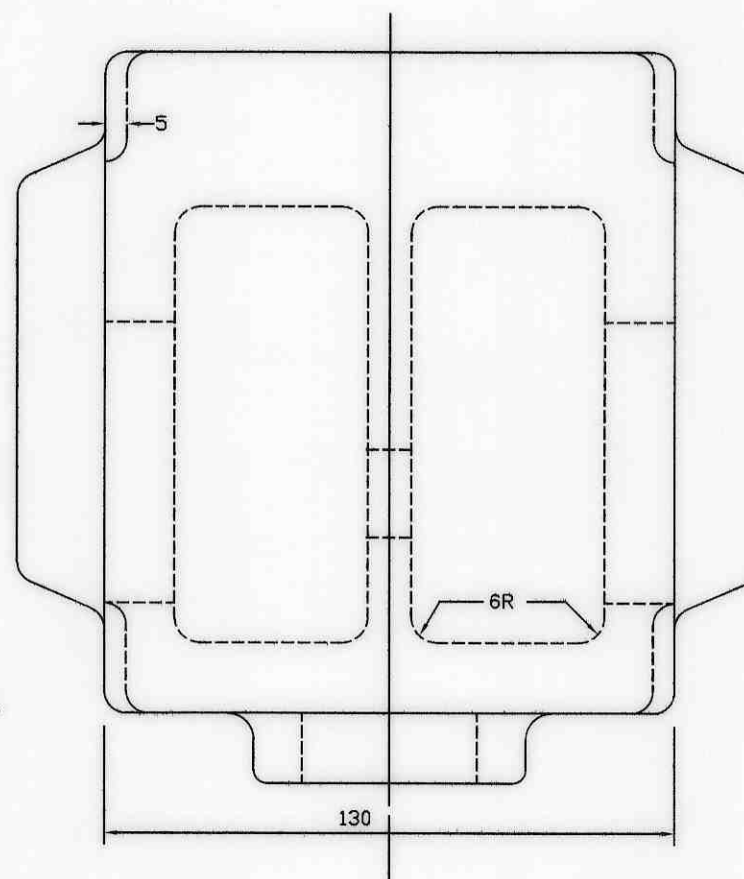
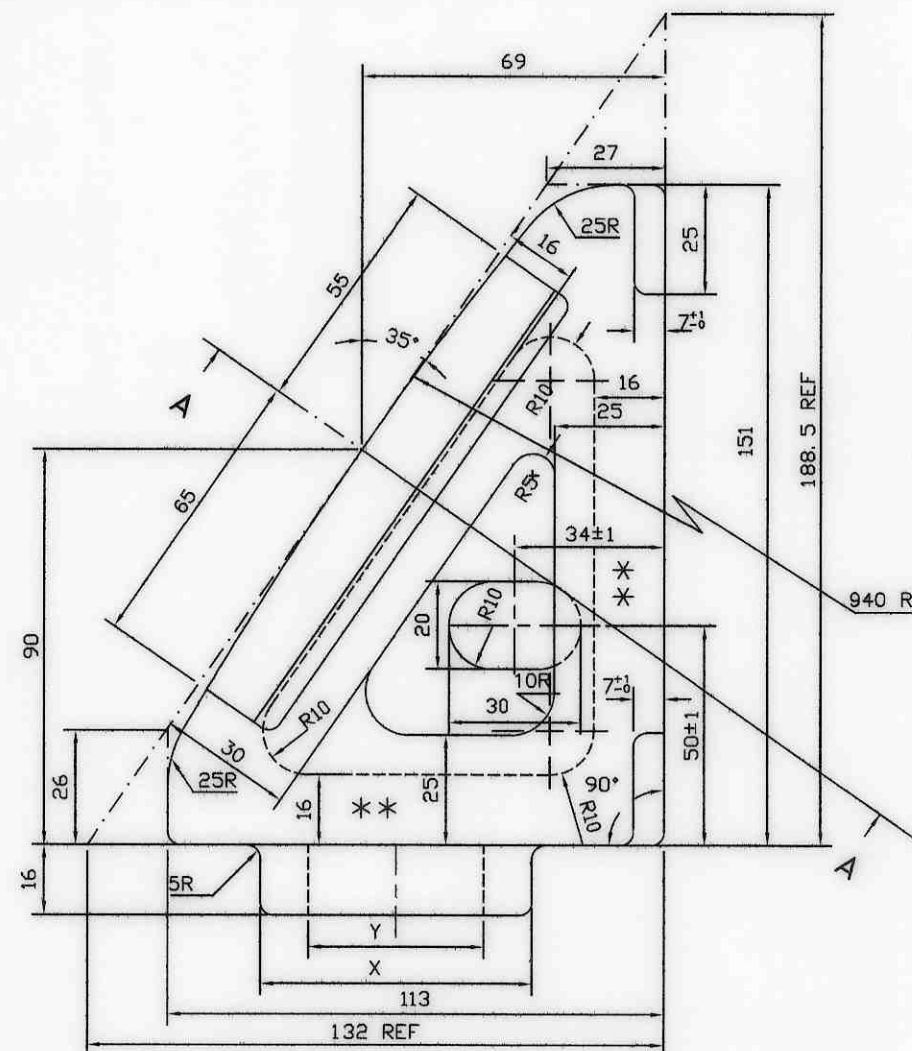


WX24021



SECTION-AA

③	WD-24119	DIM.30 MM CHANGED INTO 20 MM IN TABLE-1	12/24
②	WD-23006	REVISED AND REDRAWN	02/23
①	WX-19011	REVISED AND REDRAWN	10/19
ALT. ITEM	AUTHY.	DESCRIPTION	DATE

THE FIRM SHALL SUBMIT THE FOLLOWING PARAMETERS
FOR THE OFFERED FRICTION WEDGE AS PER RDSO
SPECIFICATION CONTR-02-MISC-2007 (LATEST REVISION)

S.NO.	PARTICULARS	PARAMETERS
1	CO-EFFICIENT OF FRICTION OF VERTICAL WEAR FACE	DYNAMIC
2	VOLUMETRIC WEAR OF FRICTION FACE	
FOR COMPOSITE LINER OF FRICTION WEDGE (IF APPLICABLE)		
3	INTERNAL SHEAR STRENGTH	
4	COMPRESSIVE STRENGTH	
5	SHEAR STRENGTH OF BOND	
6	HARDNESS	
7	DENSITY	
8	WATER ABSORPTION	
FOR METALLIC PART/COMPLETE METALLIC FRICTION WEDGE		
9	CHEMICAL COMPOSITION	
10	ULTIMATE TENSILE STRENGTH	
11	YIELD STRENGTH	
12	ELONGATION %	
13	HARDNESS	
14	IMPACT TEST (FOR ADI ONLY)	
15	ADI MICROSTRUCTURE (IF APPLICABLE)	
16	TO CHECK CASTING DEFECTS FOLLOWING NON DESTRUCTIVE TEST (NDT) SHALL BE CARRIED OUT AS PER RELEVANT SPEC (a) MAGNETIC PARTICLE INSPECTION (MPI) (b) DYE PENETRANT TEST (DPT) OVER SECTIONED PORTION	

NOTE:-

1. MARKING AS PER SPECIFICATION SHALL BE DONE AT '***' MARKED LOCATION (BOTH SIDE) IN MIN. 6 mm SIZE LETTERS.
2. DIMENSION 'X', AND 'Y' SHALL BE AS PER DRAWING OF FRICTION WEDGE OF RELEVANT BOGIE AS GIVEN IN TABLE-1.

TABLE-1

VARIANT TYPE	FOR BOGIE TYPE	SPIGOT SIZE (mm.)	
		X	Y
A	OTHER BOGIES (WHEREVER APPLICABLE)	62	40
B	RAFTAAR BOGIE	40	20
C	LWLH BOGIE	35	15

ITEM	DESCRIPTION & DIMENSIONS			NO. OFF PER BOGIE	REF. DRG	WT OF DINE (KGS)	MATL&SPEC	REMARKS
SUPERSEDED BY				CASNUB 22NLB, 22HS, LCCF, LWLH				
SUPERSEDS			DATE	AND RAFTAAR BOGIE				
SCALE	PASSED			SPACE ENVELOPE OF FRICTION WEDGE WITH SPECIFIED RANGE OF COF				
1: 1	CHECKED							
	DRAWN	V. S. JINA	6/10					
	TRACED							
	J.SHEET							
B.G.	R.D.S.O.			GROUP	WX-10046			