

1 1 2 3 4 5 3 4 5 6 7 8 9 10 11 12 13

1
A
2
3
4
5
B
18.08.2008
C
D
E
F
G

16.08.2008

576

65

65

576

65

ISOMETRIC VIEW

ENTERED
INTO
DATA BASE
14 OCT 2022

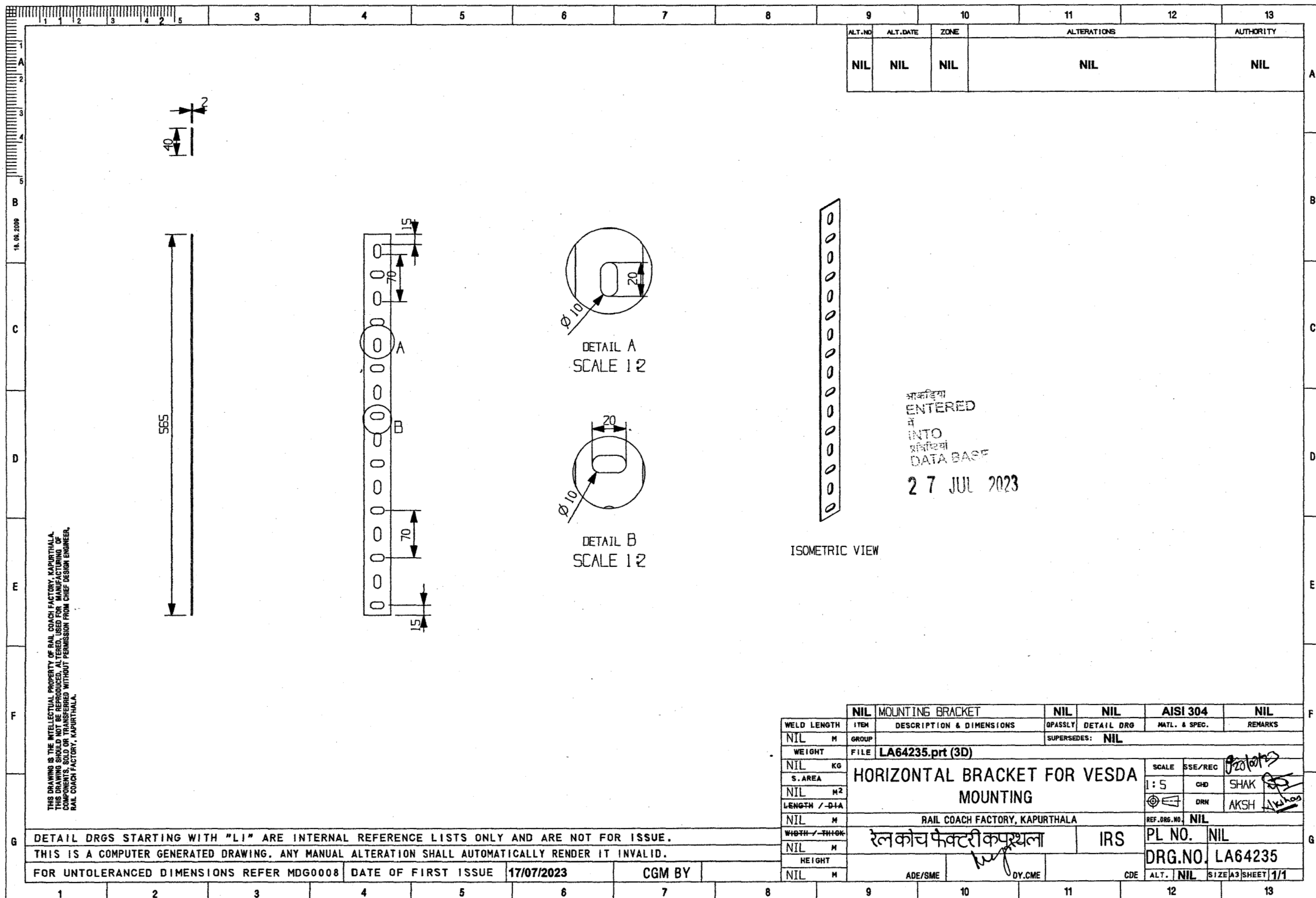
THIS DRAWING IS THE INTELLECTUAL PROPERTY OF RAIL COACH FACTORY, KAPURTHALA.
THIS DRAWING SHOULD NOT BE REPRODUCED, ALTERED, USED FOR MANUFACTURING OF
COMPONENTS, SOLD OR TRANSFERRED WITHOUT PERMISSION FROM CHIEF DESIGN ENGINEER,
RAIL COACH FACTORY, KAPURTHALA.

ALT.NO	ALT.DATE	ZONE	ALTERATIONS	AUTHORITY
NIL	NIL	NIL	NIL	NIL

WELD LENGTH	ITEM	DESCRIPTION & DIMENSIONS	QPASSLY	DETAIL DRG	MATL. & SPEC.	REMARKS			
NIL	M	GROUP	SUPERSEDES: NIL						
WEIGHT	FILE	LA64226.prt (3D)							
1.15032KG	PLATE					SCALE	SSE/REC	14/10/2022	
S.AREA						1:5	CHD		SHAK
NIL						DRN	AKSH		
LENGTH / DIA						RAIL COACH FACTORY, KAPURTHALA			REF.DRG.NO
NIL	M	रेल कोच फैक्टरी कपूरथला			IRS	PL NO.	NIL	G	
WIDTH / THICK	NIL			DRG.NO.	LA64226				
HEIGHT	NIL			ALT.	NIL	SIZE A3	SHEET 1/1		
NIL	M	ADE/SME	DY.CME	N.R	CDE				

DETAIL DRGS STARTING WITH "LI" ARE INTERNAL REFERENCE LISTS ONLY AND ARE NOT FOR ISSUE.	THIS IS A COMPUTER GENERATED DRAWING. ANY MANUAL ALTERATION SHALL AUTOMATICALLY RENDER IT INVALID.	FOR UNTOLERANCED DIMENSIONS REFER MDG0008	DATE OF FIRST ISSUE	13/09/2022	CGM BY
1	2	3	4	5	6

1 2 3 4 5 6 7 8 9 10 11 12 13



1	2	3	4	5	6	7	8	9	10	11	12	13
A	ITEM NO.	DESCRIPTION	SIZE	SPECIFICATION	COATING							
	1	HEX CASTLE NUT	M18	IS:2232-1967,4	MDTS 057							
B	2	HEX CASTLE NUT	M22	IS:2232-1967,4	MDTS 057							
	3	HEX NUT	M8	IS:1364(PART-3)-1992,A2-70 TO IS:1367(PART-14)								
	4	HEX NUT	M10	IS:1364(PART-3)-1992,ISO 4032,8	MDTS 057							
	5	HEX NUT	M12	IS:1364(PART-3)-1992,A2-70 TO IS:1367(PART-14)								
	6	HEX NUT	M12	IS:1364(PART-3)-1992,ISO 4032,8	MDTS 057							
	7	HEX NUT	M16	IS:1364(PART-3)-1992,ISO 4032,8	MDTS 057							
	8	HEX NUT	M20	IS:1364(PART-3)-1992,ISO 4032,8	MDTS 057							
	9	HEX NUT	M24	IS:1364(PART-3)-1992,ISO 4032,6	MDTS 057							
	10	HEX NUT	M24	IS:1364(PART-3)-1992,8	MDTS 057							
	C	11	HEX NUT (DC)	M6	IS:1364(PART-3)-1992,ISO 4032,6	MDTS 057						
12		HEX NUT (DC)	M8	IS:1364(PART-3)-1992,ISO 4032,6	MDTS 057							
13		HEX NUT (DC)	M10	IS:1364(PART-3)-1992,ISO 4032,6	MDTS 057							
14		HEX NUT (DC)	M12	IS:1364(PART-3)-1992,ISO 4032,6	MDTS 057							
15		HEX NUT (DC)	M12X1.25	IS:1364(PART-3)-1992,ISO 4032,6	MDTS 057							
16		HEX NUT (DC)	M16	IS:1364(PART-3)-1992,ISO 4032,6	MDTS 057							
17		HEX NUT (DC)	M20	IS:1364(PART-3)-1992,ISO 4032,6	MDTS 057							
18		HEX NUT (DC)	M24	IS:1364(PART-3)-1992,ISO 4032,6	MDTS 057							
19		HEX NUT (SC)	M5	IS:1364(PART-3)-1992,ISO 4032,6	MDTS 057							
20		HEX NUT (SC)	M10	IS:1364(PART-3)-1992,ISO 4032,6	MDTS 057							
D	21	HEX NUT (SC)	M16	IS:1364(PART-3)-1992,ISO 4032,6	MDTS 057							
	22	HEX NUT (SC)	M24	IS:1364(PART-3)-1992,ISO 4032,6	MDTS 057							
	23	HEX NUT SLOTTED	M24	IS:2232-1967,4	MDTS 057							
	24	HEX THIN NUT	M6	IS:1364(PART-4)-1992,ISO 4035,05	MDTS 057							
	25	HEX THIN NUT	M8	IS:1364(PART-4)-1992,ISO 4035,05	MDTS 057							
	26	HEX THIN NUT	M10	IS:1364(PART-4)-1992,ISO 4035,05	MDTS 057							
	27	HEX THIN NUT	M12	IS:1364(PART-4)-1992,ISO 4035,05	MDTS 057							
	28	HEX THIN NUT	M14	IS:1364(PART-4)-1992,ISO 4035,05	MDTS 057							
	29	HEX THIN NUT	M16	IS:1364(PART-4)-1992,ISO 4035,05	MDTS 057							
	30	HEX THIN NUT	M18	IS:1364(PART-4)-1992,ISO 4035,05	MDTS 057							
E	31	HEX THIN NUT	M20	IS:1364(PART-4)-1992,8	MDTS 057							
	32	HEX THIN NUT	M20	IS:1364(PART-4)-1992,ISO 4035,05	MDTS 057							
	33	NYLOC NUT	M16	IS:7002-1991,5	MDTS 057							
	34	NYLOC NUT	M20	IS:7002-1991,5	MDTS 057							
	35	NYLOC NUT	M8	IS:7002-1991,8	MDTS 057							
	36	NYLOC NUT	M10	IS:7002-1991,8	MDTS 057							
	37	NYLOC NUT	M12	IS:7002-1991,8	MDTS 057							
	38	HEX NUT (DC)	M5	IS:1364(PART-3)-1992,ISO 4032,6	MDTS 057							
	39	HEX NUT (SC)	M6	IS:1364(PART-3)-1992,ISO 4032,6	MDTS 057							
	40	HEX NUT	M8X1.25	IS:1364(PART-3)-1992	MDTS 057							
F	41	HEX THIN NUT (LH)	M24	IS:1364(PART-4)-1992,ISO 4035,05	MDTS 057							
	42	HEX THIN NUT (RH)	M24	IS:1364(PART-4)-1992,ISO 4035,05	MDTS 057							
	43	HEX NUT	M39X3	IS:1364-67,P-4,TAB-3	MDTS 057							
G	THIS IS A COMPUTER GENERATED DRAWING. ANY MANUAL ALTERATION SHALL AUTOMATICALLY RENDER IT INVALID.											
	FOR UNTOLERANCED DIMENSIONS REFER MDG0008											

ALT.NO	ALT.DATE	ZONE	ALTERATIONS	AUTHORITY
a	7/12/2000	F1-FB	ITEM NO. 35 TO 43 ADDED.	DIC NO. MD 990233
b	20/9/2001	F1-FB	NOTE 1 ADDED.	SME/DEV

26 SEP 2001

NOTE:-
1. ITEMS MARKED STRIKETHROUGH ARE REMOVED FROM THIS LIST AND ARE ADDED IN NEW LIST LIHWSS08.

WELD LENGTH	ITEM	DESCRIPTION & DIMENSIONS	DETAIL Dwg	MATL. & SPEC.	REMARKS
NIL	M	GROUP			
WEIGHT	FILE	/users2/dl/std_list/lihw08b.prt			
NIL	KG				
S.AREA					
NIL	M ²				
LENGTH / DIA					
NIL	M				
WIDTH / THICK					
NIL	M				
HEIGHT					
NIL	M				

SCALE	SME/REC	CHK	DRN	REF.DWG	NIL
1:1					
STANDARDISED LIST OF NUTS					
RAIL COACH FACTORY, KAPURTHALA					
INDIAN RAILWAYS STANDARD					
PL NO.04049809					
DRG.NO. LIHW08					
N.R					
ALT. 6 SHEET 1/1					

1	2	3	4	5	6	7	8	9	10	11	12	13	
A NS	ITEM NO.	DESCRIPTION	SIZE	SPECIFICATION				ALT. NO.	ALT. DATE	ZONE	ALTERATIONS		AUTHORITY
	1	HEX HEAD BOLT	M6X40	ISO:4014-88, IS:1364(PART-1)-1992,A2-70 TO IS:1367(PART-14)-1984,CE									
	2	HEX HEAD BOLT	M8X35	ISO:4014-88, IS:1364(PART-1)-1992,A2-70 TO IS:1367(PART-14)-1984,CE									
	3	HEX HEAD BOLT	M8X55	ISO:4014-88, IS:1364(PART-1)-1992,A2-70 TO IS:1367(PART-14)-1984,CE									
	4	HEX HEAD BOLT	M10X100	ISO:4014-88, IS:1364(PART-1)-1992,A2-70 TO IS:1367(PART-14)-1984,CE									
	5	HEX HEAD BOLT	M12X30	IS:1364(PART-1)-1992,A2-70 TO IS:1367(PART-14)-1984									
	6	HEX HEAD BOLT	M12X35	IS:1364(PART-1)-1992,A2-70 TO IS:1367(PART-14)-1984									
B													
C													
D													
E													
F													
G													

26 SEP 2001

NOTE:
NS STANDS FOR NON-STANDARD HARDWARES
THESE SHOULD BE DISCOURAGED FOR FUTURE USE.

WELD LENGTH	ITEM	DESCRIPTION & DIMENSIONS	OPASLY	DETAIL DWD	MATL. & SPEC.	REMARKS		
NIL	M	GROUP	SUPERSEDES: NIL					
WEIGHT	FILE	/users2/d1/std_list/lihwss01.prt						
NIL	KG	STANDARDISED LIST OF STAINLESS STEEL BOLTS				SCALE	SEE/REC	26/9/01
S. AREA						1:1	CHD	
NIL	M ²						OPN	GARG
LENGTH / DIA								LOBIN
NIL	M	RAIL COACH FACTORY, KAPURTHALA				REF. DRG.	NIL	
WIDTH / THICK		INDIAN RAILWAYS STANDARD				PL NO. 04039968		
NIL	M							
HEIGHT		ADE/SME				DRG. NO. LIHWSS01		
NIL	M							
		N.R		CODE		ALT. NIL SHEET 1/1		

THIS IS A COMPUTER GENERATED DRAWING. ANY MANUAL ALTERATION SHALL AUTOMATICALLY RENDER IT INVALID.

FOR UNTOLERANCED DIMENSIONS REFER MDG0008	REVIEW NO. /PROTOTYPE/FINAL	DATE OF FIRST ISSUE	20/09/2001
---	-----------------------------	---------------------	------------

1	2	3	4	5	6	7	8	9	10	11	12	13																																																																													
A B C D E F G	ITEM NO.	DESCRIPTION	SIZE	SPECIFICATION																																																																																					
	1	MACHINED WASHER	A4.3	DIN125, IS:2016-1967, 140HV, A2 TO IS:1367 (PT-14) - 1984																																																																																					
	2	MACHINED WASHER	A5.3	DIN125, IS:2016-1967, 140HV, A2 TO IS:1367 (PT-14) - 1984																																																																																					
	3	MACHINED WASHER	A5.3	DIN125, IS:2016-1967, 200HV, A2 TO IS:1367 (PT-14) - 1984																																																																																					
	4	MACHINED WASHER	A6.4	DIN125, IS:2016-1967, 140HV, A2 TO IS:1367 (PT-14) - 1984																																																																																					
	5	MACHINED WASHER	A8.4	DIN125, IS:2016-1967, 140HV, A2 TO IS:1367 (PT-14) - 1984																																																																																					
	6	MACHINED WASHER	A10.5	DIN125, IS:2016-1967, 140HV, A2 TO IS:1367 (PT-14) - 1984																																																																																					
	7	MACHINED WASHER	A10.5	DIN125, IS:2016-1967, 200HV, A2 TO IS:1367 (PT-14) - 1984																																																																																					
8	MACHINED WASHER	A13	DIN125, IS:2016-1967, 140HV, A2 TO IS:1367 (PT-14) - 1984																																																																																						
				<div>अंकित Entered Date 26 SEP 2001 SCANNED</div>																																																																																					
				<table border="1"><thead><tr><th>ALT. NO.</th><th>ALT. DATE</th><th>ZONE</th><th colspan="2">ALTERATIONS</th><th>AUTHORITY</th></tr></thead><tbody><tr><td></td><td></td><td></td><td colspan="2"></td><td></td></tr></tbody></table>									ALT. NO.	ALT. DATE	ZONE	ALTERATIONS		AUTHORITY																																																																							
ALT. NO.	ALT. DATE	ZONE	ALTERATIONS		AUTHORITY																																																																																				
				<table border="1"><thead><tr><th>WELD LENGTH</th><th>ITEM</th><th>DESCRIPTION & DIMENSIONS</th><th>OPASSLY</th><th>DETAIL DRG</th><th>MATL. & SPEC.</th><th>REMARKS</th></tr></thead><tbody><tr><td>NIL</td><td>M</td><td>GROUP</td><td colspan="4">SUPERSEDES:</td></tr><tr><td>WEIGHT</td><td>FILE</td><td colspan="5">/users2/dl/std_list/lihwss09.prt</td></tr><tr><td>NIL</td><td>KG</td><td colspan="4" rowspan="2">STANDARDISED LIST OF STAINLESS STEEL WASHERS</td><td>SCALE</td><td>1:1</td><td>CHD</td><td>26/9/01</td></tr><tr><td>S. AREA</td><td>M²</td><td>DRN</td><td>GARG</td><td>LOGIN</td><td>RGang</td></tr><tr><td>LENGTH / DIA</td><td>M</td><td colspan="4">RAIL COACH FACTORY, KAPURTHALA</td><td>REF. DRG. No.</td><td colspan="3">NIL</td></tr><tr><td>WIDTH / THICK</td><td>M</td><td colspan="4">INDIAN RAILWAYS STANDARD</td><td>PL NO.</td><td colspan="3">04082758</td></tr><tr><td>HEIGHT</td><td>M</td><td colspan="4">ADE/SME</td><td>DRG. NO.</td><td colspan="3">LIHWSS09</td></tr><tr><td>NIL</td><td>M</td><td colspan="4">N.R</td><td>ALT.</td><td>NIL</td><td>SHEET</td><td>1/1</td></tr></tbody></table>									WELD LENGTH	ITEM	DESCRIPTION & DIMENSIONS	OPASSLY	DETAIL DRG	MATL. & SPEC.	REMARKS	NIL	M	GROUP	SUPERSEDES:				WEIGHT	FILE	/users2/dl/std_list/lihwss09.prt					NIL	KG	STANDARDISED LIST OF STAINLESS STEEL WASHERS				SCALE	1:1	CHD	26/9/01	S. AREA	M ²	DRN	GARG	LOGIN	RGang	LENGTH / DIA	M	RAIL COACH FACTORY, KAPURTHALA				REF. DRG. No.	NIL			WIDTH / THICK	M	INDIAN RAILWAYS STANDARD				PL NO.	04082758			HEIGHT	M	ADE/SME				DRG. NO.	LIHWSS09			NIL	M	N.R				ALT.	NIL	SHEET	1/1
WELD LENGTH	ITEM	DESCRIPTION & DIMENSIONS	OPASSLY	DETAIL DRG	MATL. & SPEC.	REMARKS																																																																																			
NIL	M	GROUP	SUPERSEDES:																																																																																						
WEIGHT	FILE	/users2/dl/std_list/lihwss09.prt																																																																																							
NIL	KG	STANDARDISED LIST OF STAINLESS STEEL WASHERS				SCALE	1:1	CHD	26/9/01																																																																																
S. AREA	M ²					DRN	GARG	LOGIN	RGang																																																																																
LENGTH / DIA	M	RAIL COACH FACTORY, KAPURTHALA				REF. DRG. No.	NIL																																																																																		
WIDTH / THICK	M	INDIAN RAILWAYS STANDARD				PL NO.	04082758																																																																																		
HEIGHT	M	ADE/SME				DRG. NO.	LIHWSS09																																																																																		
NIL	M	N.R				ALT.	NIL	SHEET	1/1																																																																																
THIS IS A COMPUTER GENERATED DRAWING. ANY MANUAL ALTERATION SHALL AUTOMATICALLY RENDER IT INVALID.																																																																																									
FOR UNTOLERANCED DIMENSIONS REFER MDG0008				REVIEW NO. /PROTOTYPE/FINAL		DATE OF FIRST ISSUE		20/9/2001																																																																																	

1	2	3	4	5	6	7	8	9	10	11	12	13					
A NS NS NS B C D E F G	ITEM NO.	DESCRIPTION	SIZE	SPECIFICATION	COATING								ALT. NO.	ALT. DATE	ZONE	ALTERATIONS	AUTHORITY
	1	PLAIN WASHER	A3.5	IS:2016-1967, ALUMINIUM	AC25 TO IS:1868-82								a	7/12/2000	E1-E8	ITEM NO.28 TO 29 ADDED. NOTE 1 ADDED.	DIC NO. MD 990233 SME/DEV
	2	PLAIN WASHER	A4.5	IS:2016-1967, ALUMINIUM	AC25 TO IS:1868-82								b	20/9/2001	E1-E8	ITEM NO.30 ADDED.	
	3	PLAIN WASHER	A5.5	IS:2016-1967, ALUMINIUM	AC25 TO IS:1868-82												
	4	PLAIN WASHER	A9	IS:2016-1967, STEEL	MDTS 057												
	5	PLAIN WASHER	B6	IS:2016-1967, STEEL	MDTS 057												
	6	PLAIN WASHER	B6.6	IS:2016-1967, STEEL	MDTS 057												
	7	PUNCHED WASHER	A11	IS:2016-1967, STEEL	MDTS 057												
	8	PUNCHED WASHER	A12	IS:2016-1967, STEEL	MDTS 057												
	9	PUNCHED WASHER	A14	IS:2016-1967, STEEL	MDTS 057												
	10	PUNCHED WASHER	A16	IS:2016-1967, STEEL	MDTS 057												
	11	PUNCHED WASHER	A18	IS:2016-1967, STEEL	MDTS 057												
	12	PUNCHED WASHER	A20	IS:2016-1967, STEEL	MDTS 057												
	13	PUNCHED WASHER	A22	IS:2016-1967, STEEL	MDTS 057												
	14	PUNCHED WASHER	A24	IS:2016-1967, STEEL	MDTS 057												
	15	PUNCHED WASHER	A26	IS:2016-1967, STEEL	MDTS 057												
	16	PUNCHED WASHER	A36	IS:2016-1967, STEEL	MDTS 057												
	17	PUNCHED WASHER	A42	IS:2016-1967, STEEL	MDTS 057												
	18	SPRING WASHER	B5	IS:3063-1994	MDTS 057												
	19	SPRING WASHER	B6	IS:3063-1994	MDTS 057												
	20	SPRING WASHER	B8	IS:3063-1994	MDTS 057												
	21	SPRING WASHER	B10	IS:3063-1994	MDTS 057												
	22	SPRING WASHER	B12	IS:3063-1994	MDTS 057												
	23	SPRING WASHER	B16	IS:3063-1994	MDTS 057												
	24	SPRING WASHER	B18	IS:3063-1994	MDTS 057												
	25	SPRING WASHER	B20	IS:3063-1994	MDTS 057												
	26	SPRING WASHER	B22	IS:3063-1994	MDTS 057												
	27	SPRING WASHER	B24	IS:3063-1994	MDTS 057												
	28	PLAIN WASHER	A33	IS:2016-1967, STEEL	MDTS 057												
	29	PLAIN WASHER	A3.4	IS:2016-1967, ALUMINIUM	AC25 TO IS:1868-82												
30	MACHINED WASHER	A31	DIN125, IS:2016-1967	MDTS 057													
NOTE:- 1.NS STANDS FOR NON-STANDARD HARDWARES THESE SHOULD BE DISCOURAGED FOR FUTURE USE.																	
THIS IS A COMPUTER GENERATED DRAWING. ANY MANUAL ALTERATION SHALL AUTOMATICALLY RENDER IT INVALID.																	
FOR UNTOLERANCED DIMENSIONS REFER MDG0008																	
REVIEW NO. /PROTOTYPE/FINAL																	
DATE OF FIRST ISSUE 21/12/99																	
WELD LENGTH																	
ITEM																	
DESCRIPTION & DIMENSIONS																	
PASSLY																	
DETAIL DRG																	
MATL. & SPEC.																	
REMARKS																	
NIL																	
WEIGHT																	
FILE																	
/users2/dl/std_list/lihw09b.prt																	
STANDARDISED LIST OF WASHERS																	
RAIL COACH FACTORY, KAPURTHALA																	
INDIAN RAILWAYS STANDARD																	
PL NO.04082620																	
DRG.NO. LIHW09																	
ALT. 6																	
SHEET 1/1																	

अंकित
Entered
मे
Inte
प्रविष्टियां की
Date Base
26 SEP 2001
SCANNED