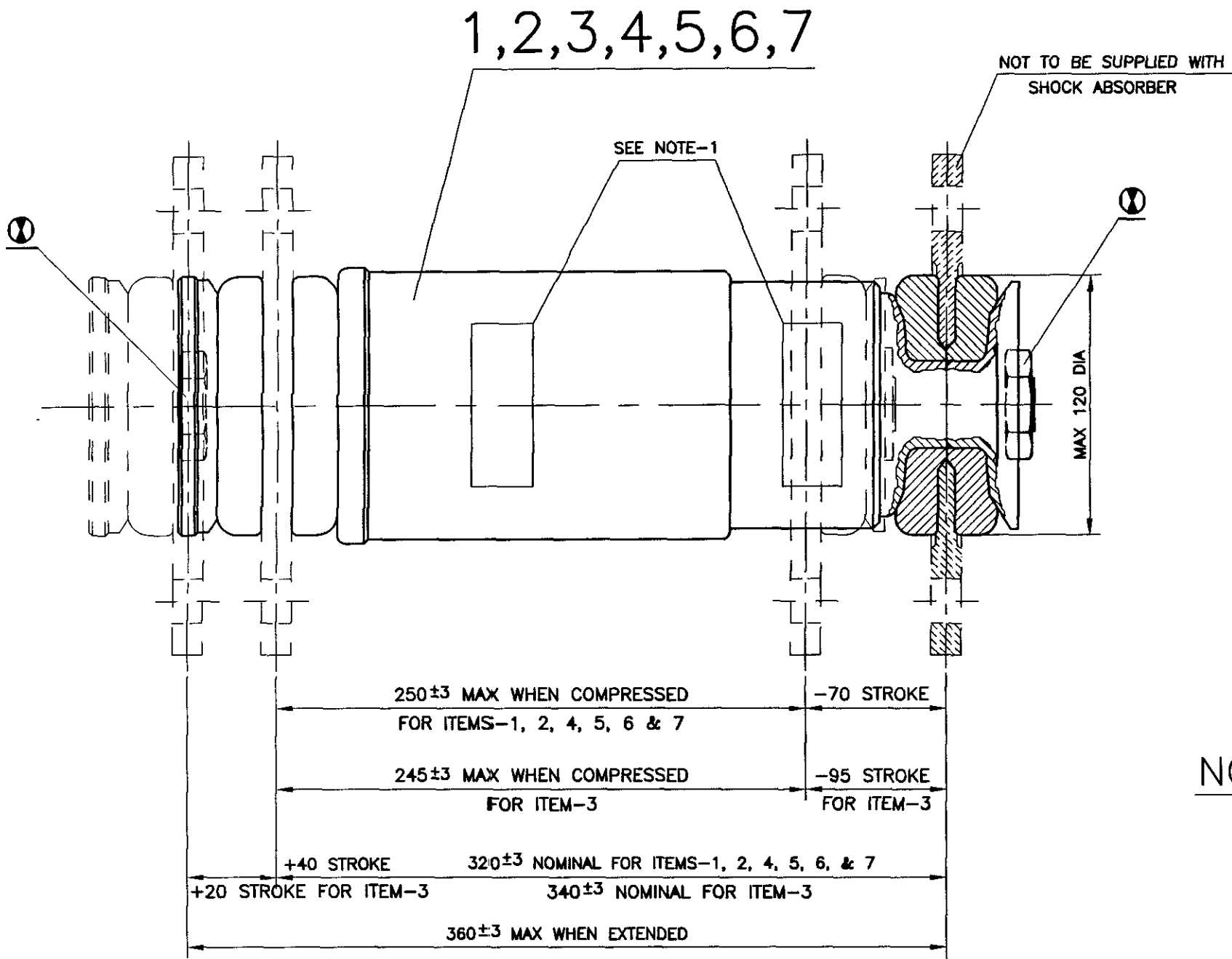


ICF/SK-0-5-015

④ 10/2000 ASSY.DRG.NOS.WTAC3-0-5-301&WLRRM-0-5-001 DELETED AND WTAC3-0-5-305&WLRRM9-0-5-901 ADDED. SSE/D -Sd- SME/BD	▽ ROUGH MACHINED	① ROUGH CLEANED	ALTERATIONS  ③ 12/2001 TIGHTENING TORQUE INSTRUCTIONS FOR KNORR-BREMSE SHOCK ABSORBERS ADDED. SSE/D -Sd- AME/D  ④ 07/2003 NOTE-1 ADDED. ASSY.DRG.NO. T-0-5-601 DELETED AND T-0-5-668 ADDED.QTY.IN COLS. I TO VI ALTD.FROM 'PER BOGIE' TO 'PER COACH'. -sd- 31-7-2003 SSE/D SME/BD  ⑤ 8/2007 RDSO SPEC. UPDATED. STROKE VELOCITY 10cm/sec WITH ±10% VARIATION IN CAPACITY & FOR END NUT -A/F42mm, 12mm THICK DELETED. -sd- 01-8-2007 SSE/D AME/D  ⑥ 9/2024 IN NOTE-1,RDSO SPECN. UPDATED  SSE/D SME/D
	▽▽ FINISH MACHINED	② CHAMFERED	
	▽▽▽ FINE FINISH MACHINED	③ BURRS REMOVED	



NOTE

1. MARKINGS SHALL BE MADE AS PER CLAUSE-12 OF RDSO SPEC. NO. C-8703 (LATEST REVISION).

① FOR GABRIEL SHOCK ABSORBERS TIGHTENING TORQUE SHOULD BE 75 ft-lbs(10.4kgm)

FOR ESCORTS SHOCK ABSORBERS TIGHTENING TORQUE SHOULD BE 12.0 kgm.

FOR KNORR-BREMSE SHOCK ABSORBERS TIGHTENING TORQUE SHOULD BE 17.33 kgm (170Nm) AND IT SHALL BE ENSURED THAT NYLON OF NYLOC NUT HAS OVER COME THE MALE THREADS OF STUD ENDS.

COL	#	APPLICABLE FOR COACHES
I	ALL BG & MG MAINLINE COACHES (EXCEPT WLRRM), AC/EMU/T DC/EMU/T, MEMU/TC,DTC, DMU/TC & DTC	
II	WLRRM, AC/EMU/M, DC/EMU/M, MEMU/DMC & DMU/DPC	
III	DC/EMU/M <sub>2</sub> (ICF DESIGN)	
IV	DC/EMU/M <sub>2</sub> (RDSO DESIGN)	
V	DC/EMU <sub>2</sub> (ICF DESIGN)	
VI	DC/EMU <sub>2</sub> (RDSO DESIGN)	

WLRRM9-0-5-901
WTAC3-0-5-305
DMU/DPC-0-5-001
MEMU/TC-0-5-001
DC/EMU-0-5-001
DC/EMU/M2-0-5-201
DC/EMU/M2-0-1-202
DC/EMU/M-0-5-001
EMU/M-0-5-001
T-0-5-668
ASSEMBLY DRAWINGS

4	-	-	-	-	SHOCK ABSORBER 750 KG	7				SECONDARY SUSPN.
-	-	-	8	-	SHOCK ABSORBER 300 KG	6				PRIMARY SUSPN.
-	8	8	-	-	SHOCK ABSORBER 250 KG	5				PRIMARY SUSPN.
8	-	-	-	-	SHOCK ABSORBER 150 KG	4				PRIMARY SUSPN.
-	-	4	4	-	SHOCK ABSORBER 900 KG	3				SECONDARY SUSPN.
-	-	-	-	4	SHOCK ABSORBER 900 KG	2				SECONDARY SUSPN.
-	4	-	-	-	4 SHOCK ABSORBER 600 KG	1				SECONDARY SUSPN.
QTY					DESCRIPTION & DIMENSION	ITEM	REF.DRGS	MAT.SPEC	WEIGHT/UNIT	REMARKS
6	5	4	3	2	1	GROUP:				
PER COACH	PER COACH	PER COACH	PER COACH	PER COACH	PER COACH	DOUBLE ACTING HYDRAULIC SHOCK ABSORBER FOR VERTICAL APPLICATION				
PER COACH	PER COACH	PER COACH	PER COACH	PER COACH	PER COACH					
PER COACH	PER COACH	PER COACH	PER COACH	PER COACH	PER COACH					
DATA CODE NO. 077					INDIAN RAILWAY STANDARDS					SHEET 1 OF 1
03-09-2024 11-11-1998					ICF/SK-0-5-015					FORM:-IR A2-600X420