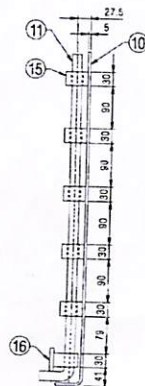
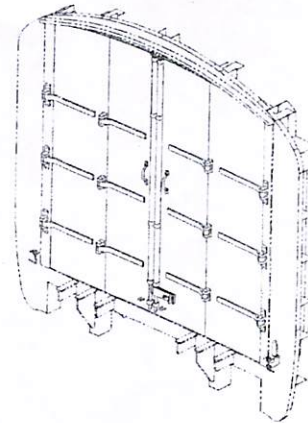
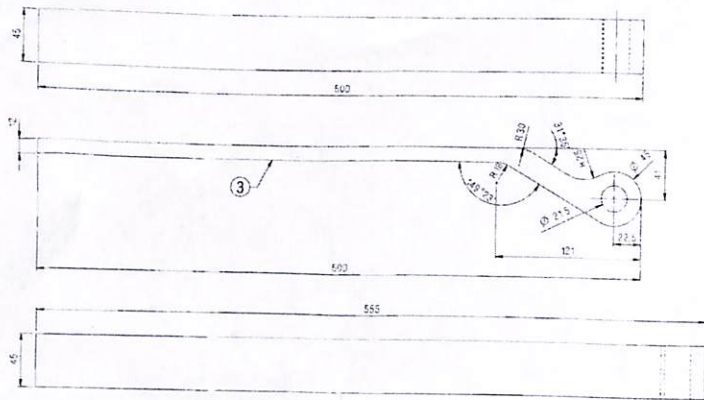
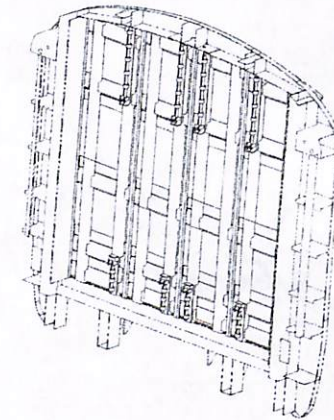
[illegible]

Fig. 1 is a side view of a mechanical assembly. It shows a central shaft with several components mounted on it. Component 7 is a flange or disc at the top. Component 15 is a sleeve or housing around the shaft. Component 16 is a base or support at the bottom. Component 6 is a vertical rod or pin passing through the assembly. Dimensions are indicated in millimeters: 27.5 (width of component 7), 5 (gap between 7 and 15), 35 (height of component 7), 50 (height of component 15), 20 (gap between 15 and 16), 80 (height of component 16), 43 (distance from bottom of 16 to center of 6), 25 (distance from center of 6 to top of 7), and 41 (total height of the assembly).

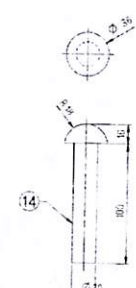
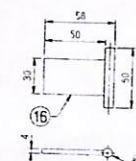
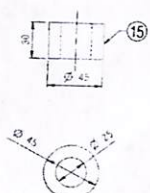
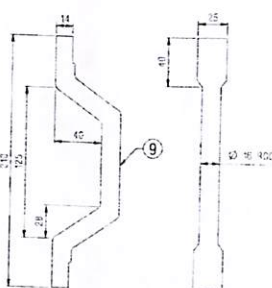
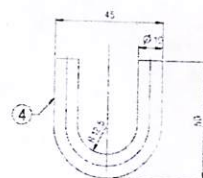
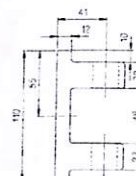
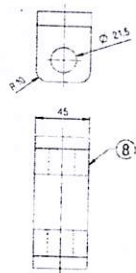
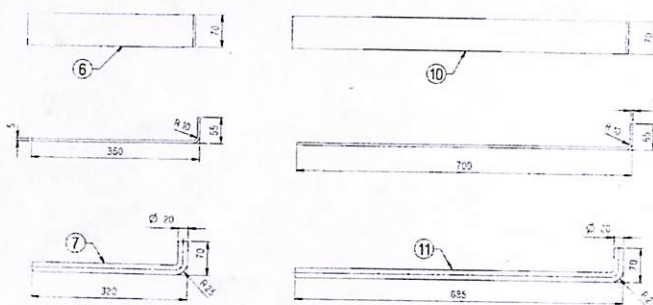
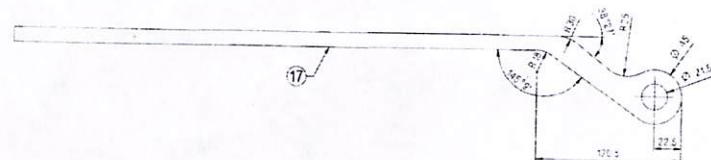
A. TITLE AUTHY		DESCRIPTION		QKD	DATE	B.G.	CGI	CGI	RDSO/CG/DRG/21043



ISO VIEW(OUTSIDE)



ISO VIEW(INSIDE)



NOTE:-

1. RIVET HEAD TO BE FORMED ON ITEM -14 AFTER ASSEMBLY AT SITE.
2. QTY. MENTIONED IN BOM ARE FOR EACH END OF THE COACH.
3. SUITABLE GRADE OF IS:2062 TO ITEMS MENTIONED IN BOM SHALL BE USED.

सीनियर सेक्शन इंजीनियर
कोरोजन (रिपेयर-1)
सवारी कारखाना
उदरे, अहमदाबाद, लखनऊ

17 DOOR HINGE STRAIGHT-2	6		IS 2062	
18 STOPPER	10		IS 2062	
19 RING	32		IS 2062	
20 DOOR HINGE PIN	6		IS 2062	
21 DOOR FRAME - 2 (LH)	1	RDSO/CG/DRG/21044		APPROPRIATE TO ITEM-2
22 DOOR FRAME - 1 (RH)	1	RDSO/CG/DRG/21044		OPPOSITE TO ITEM-1
23 ROD 22 TO FOR LOCK-2	4		IS 2062	
24 L-PLATE-2	4		IS 2062	
25 HAND HOLD	2		IS 2062	
26 HINGE	6		IS 2062	
27 ROD 22 TO FOR LOCK-1	4		IS 2062	
28 L-PLATE-1	4		IS 2062	
29 BARREL LOCK ARRANGEMENT	1	RDSO/CG/DRG/21044		
30 LOCK	2		IS 2062	
31 DOOR HINGE STRAIGHT-1	6		IS 2062	
32 DOOR FRAME 2 (RH)	1	RDSO/CG/DRG/21044		
33 DOOR FRAME 1 (RH)	1	RDSO/CG/DRG/21044		

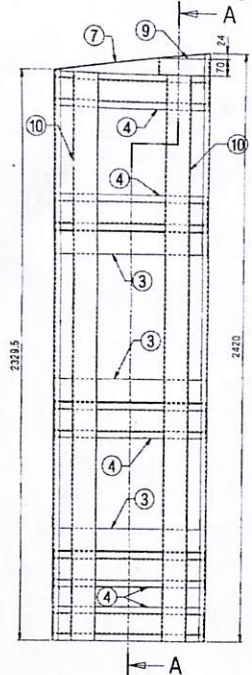
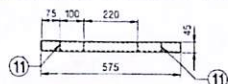
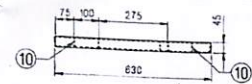
ITEM	DESCRIPTION & DIMENSIONS	QTY	REF. DRG	MT. OF ONE SET	MT. & SPEC	REMARKS
1	DOOR FRAME 1 (RH)	1	RDSO/CG/DRG/21044			
2	DOOR FRAME 2 (RH)	1	RDSO/CG/DRG/21044			
3	DOOR FRAME 1 (LH)	1	RDSO/CG/DRG/21044			
4	DOOR FRAME 2 (LH)	1	RDSO/CG/DRG/21044			
5	DOOR HINGE STRAIGHT-1	6				
6	DOOR HINGE STRAIGHT-2	6				
7	DOOR HINGE PIN	6				
8	DOOR HINGE STRAIGHT-1	6				
9	DOOR HINGE STRAIGHT-2	6				
10	STOPPER	10				
11	RING	32				
12	DOOR HINGE PIN	6				
13	DOOR FRAME - 2 (LH)	1	RDSO/CG/DRG/21044			APPROPRIATE TO ITEM-2
14	DOOR FRAME - 1 (RH)	1	RDSO/CG/DRG/21044			OPPOSITE TO ITEM-1
15	ROD 22 TO FOR LOCK-2	4			IS 2062	
16	L-PLATE-2	4			IS 2062	
17	HAND HOLD	2			IS 2062	
18	HINGE	6			IS 2062	
19	ROD 22 TO FOR LOCK-1	4			IS 2062	
20	L-PLATE-1	4			IS 2062	
21	BARREL LOCK ARRANGEMENT	1	RDSO/CG/DRG/21044			
22	LOCK	2			IS 2062	
23	DOOR HINGE STRAIGHT-1	6			IS 2062	
24	DOOR FRAME 2 (RH)	1	RDSO/CG/DRG/21044			
25	DOOR FRAME 1 (RH)	1	RDSO/CG/DRG/21044			

ASSEMBLY DRG.
REFERENCE :-

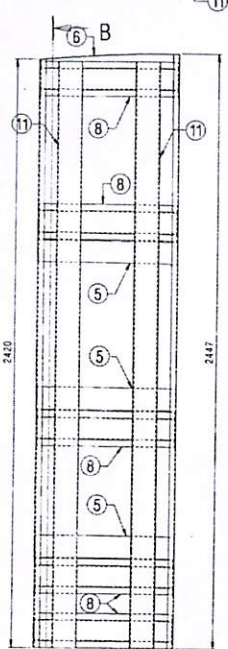
SCALE: 1:1
C. 1:1
D. 1:1
S.S. 1:1

INDIAN RAILWAYS
ICF/RCF TYPE COACHES
DOOR FRAME COMPLETE FOR
AUTOMOBILE CARRIER COACH WITH SIDE ENTRY
RDSO/CG/DRG/21043
(SHEET-2/2)

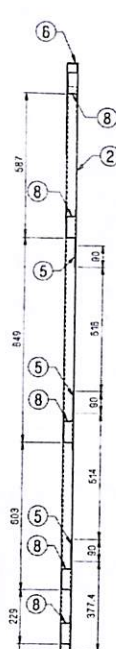
ALT.	ITEM	AUTHY.	DESCRIPTION	CAD.	DATE	CODE NO.



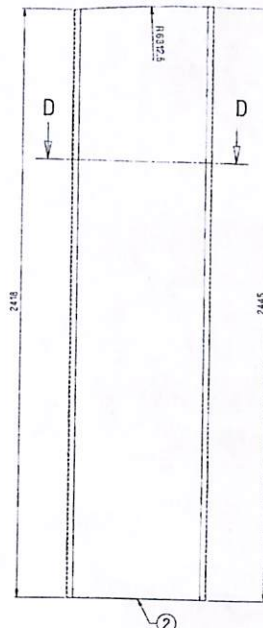
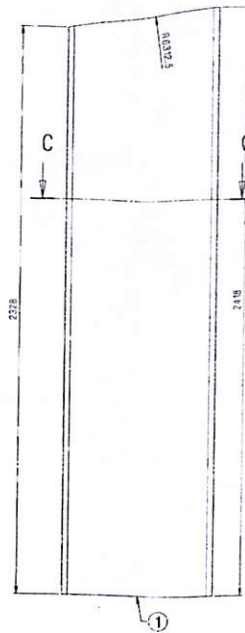
SECTION A-A



SECTION B-B

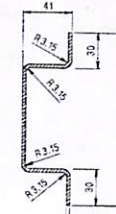


SECTION C-C

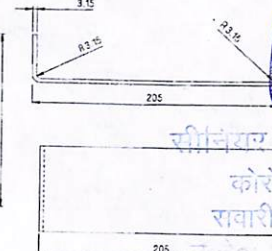


ISO VIEW OF
DOOR FRAME ASSEMBLY-1

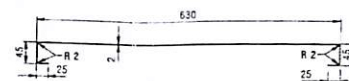
ISO VIEW OF
DOOR FRAME ASSEMBLY-2



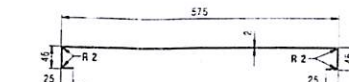
SECTION E-E



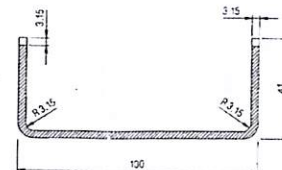
DETAIL OF ITEM NO.9



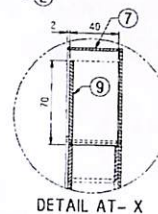
SECTION C-C



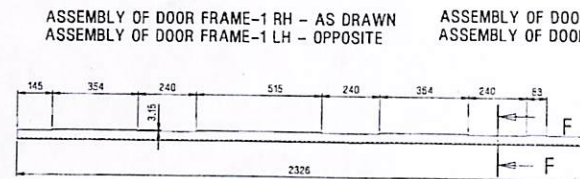
SECTION D-D



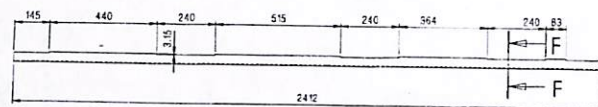
SECTION F-F



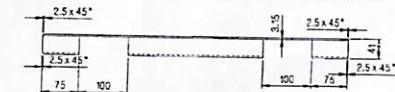
DETAIL AT-X



DETAIL OF ITEM NO.10



DETAIL OF ITEM NO.11



DETAIL OF ITEM NO.4



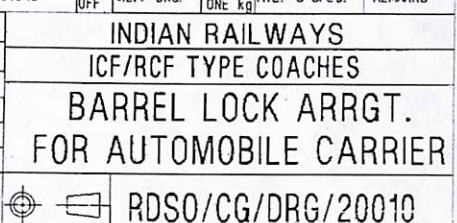
DETAIL OF ITEM NO.8

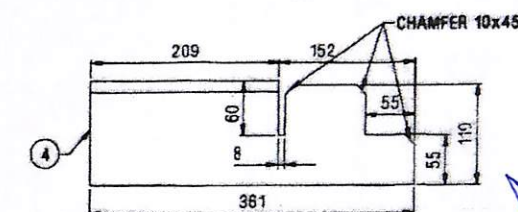
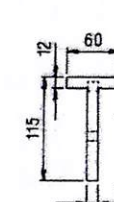
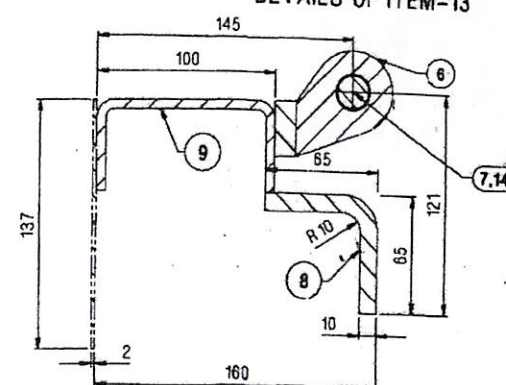
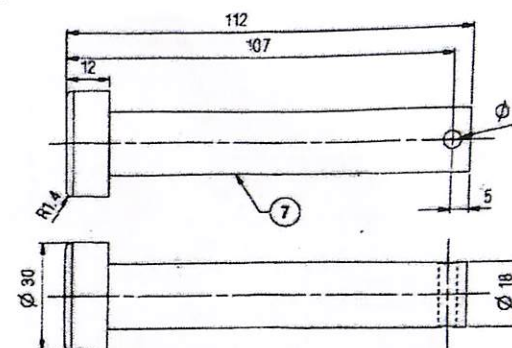
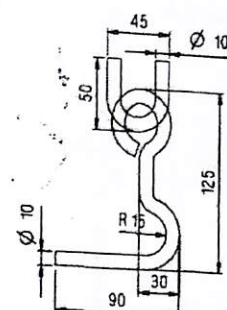
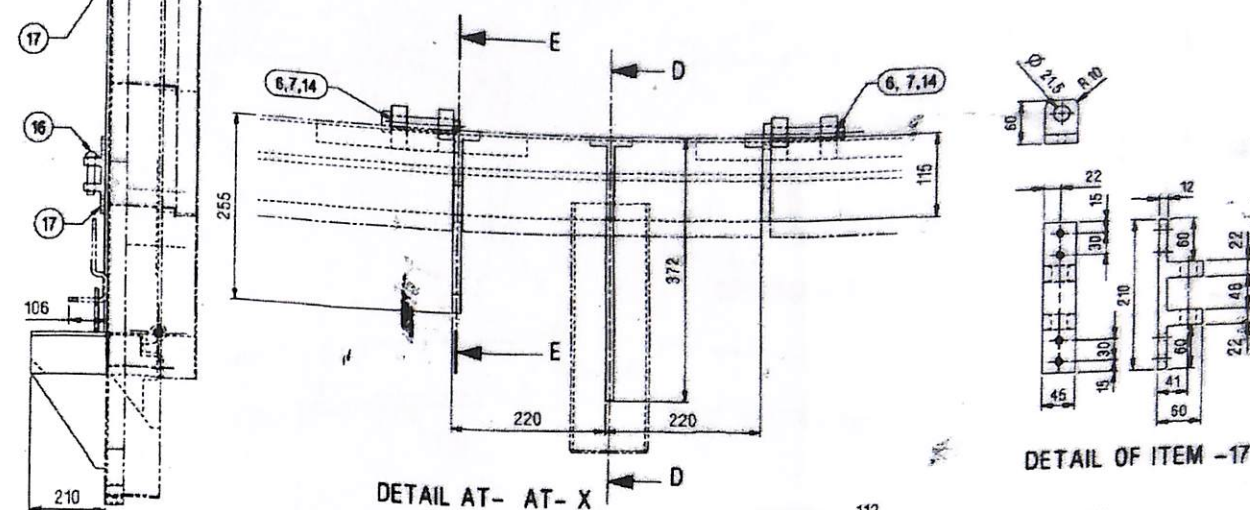
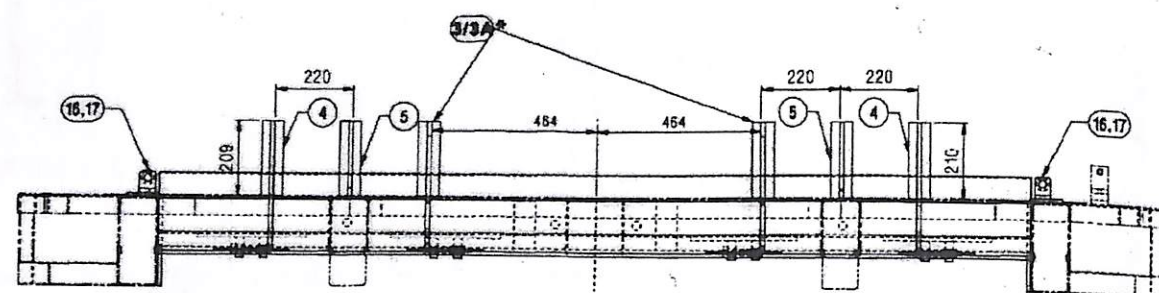
NOTE:-

1. ALL JOINTS ARE WELD JOINT UNLESS OTHERWISE STATED.


ITEM	DESCRIPTION & DIMENSIONS	QTY	REF. DRG.	VT. OF ONE	MT. & SPEC.	REMARKS
11	VERTICAL CHANNEL-2	2				RS-M41-97
10	VERTICAL CHANNEL-1	2				RS-M41-97
9	SUPPORT CHANNEL FOR TOWER	1				RS-M41-97
8	STIFFENING CHANNEL-2	5				RS-M41-97
7	TOP COVER PLATE-1	1				RS-M41-97
6	TOP COVER PLATE-2	1				RS-M41-97
5	STIFFENING PLATE-2	3				RS-M41-97
4	STIFFENING CHANNEL-1	5				RS-M41-97
3	STIFFENING PLATE-1	3				RS-M41-97
2	DOOR FRAME SHEET-2	1				RS-M41-97
1	DOOR FRAME SHEET-1	1				RS-M41-97

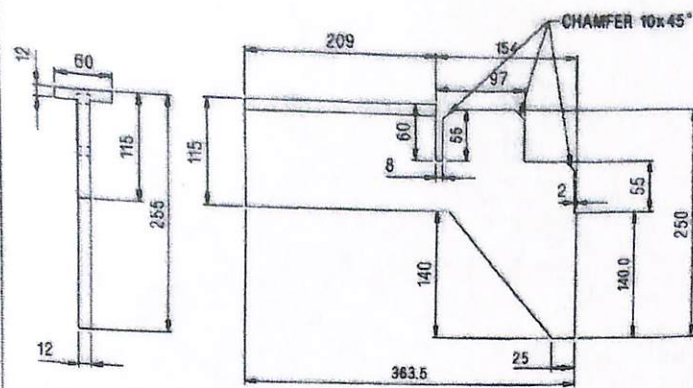
ASSEMBLY DRGS.	SCALE	DATE	BY	CHKD	DATE
REFERENCE :-	1:10	15	12	J.S.	5/10/2011
SUPERSEDED BY:-					
INDIAN RAILWAYS					
ICF/RCF TYPE COACHES					
DOOR FRAME ASSEMBLY FOR					
AUTOMOBILE CARRIER COACH WITH SIDE ENTRY					
R.D.S.O.					
1001					
RDSO/CG/DRG/21044					



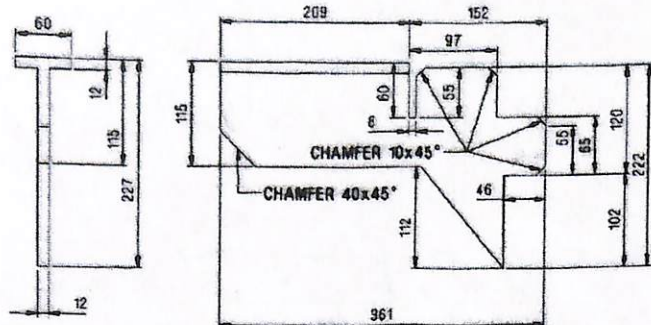


सीनेवर सेक्शन इंजिनियर

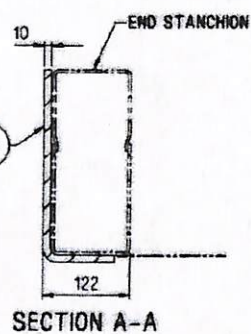
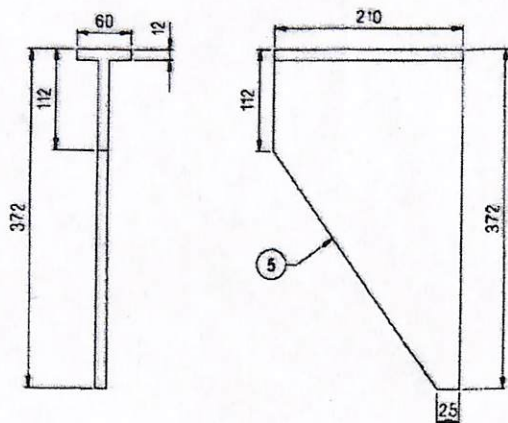
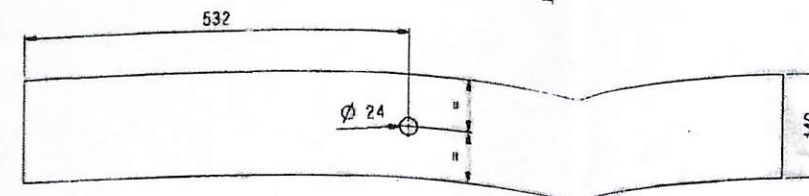
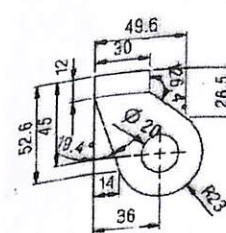
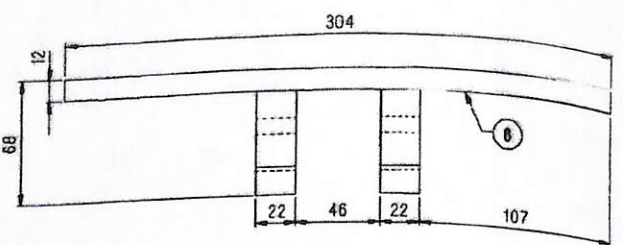
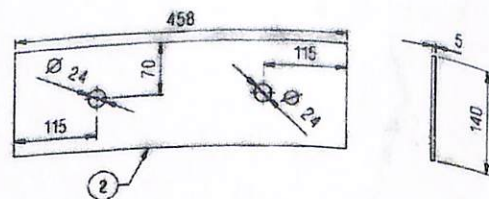
①		STD/23		(UNDERSTAND & WAIT, IF ITEM NO.-W, REVISED ITEM NO.-SA ADDS, NOTE-S&T ADDED AND DRAWING REVISED.		09/2023		CDIC NO. :-		J.S. STD/35/21		AUTOMOBILE CARRIER CARRIER DATA SHEET			
ALT. ITEM		AUTHY.		DESCRIPTION		CKD.		DATE		B.G.		R.D.S.O. 1CG1		 RDSO/CG/DRG/21042 (SHEET-V2)	



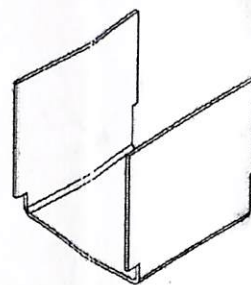
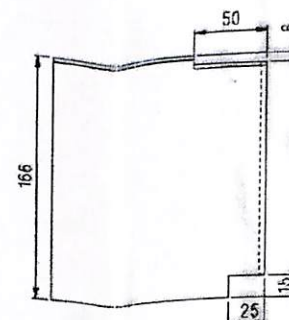
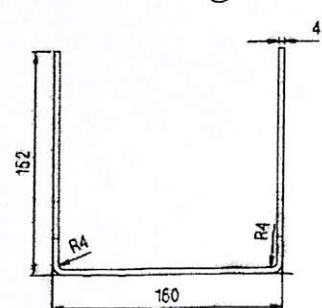
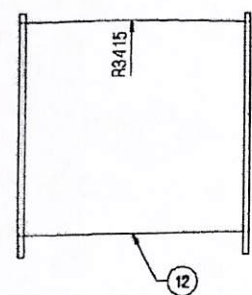
ITEM-3
(FOR SCREW COUPLING FITTED COACHES)



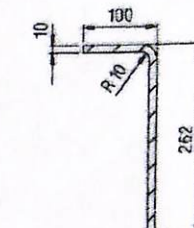
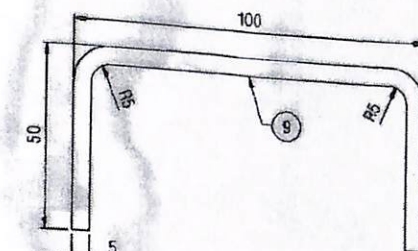
ITEM-3A
(FOR CBC HEADSTOCK FITTED COACHES)



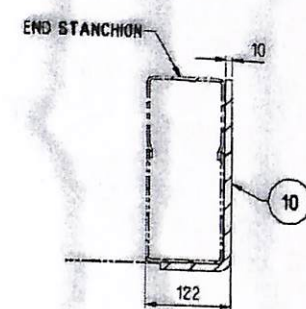
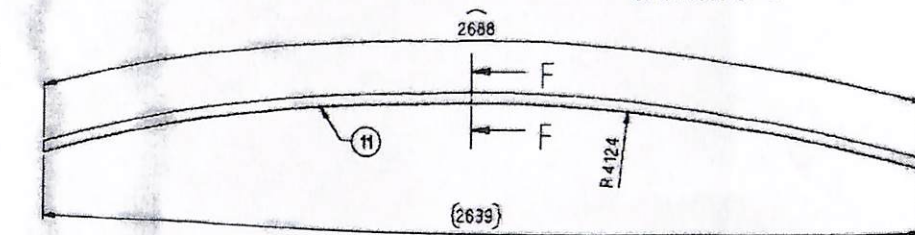
SECTION A-A



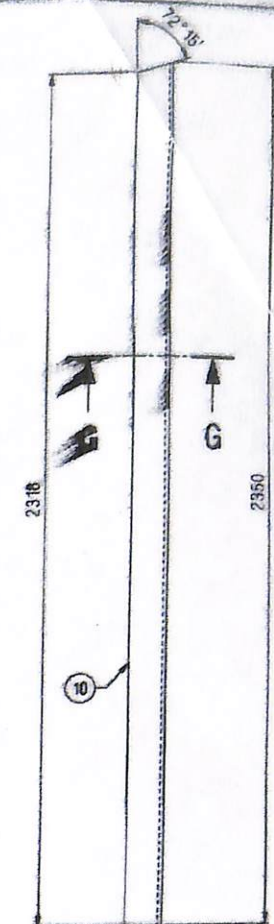
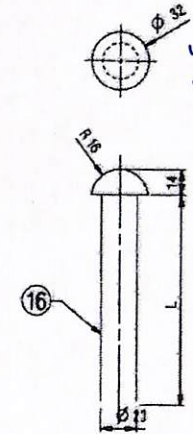
ISO VIEW



SECTION G-G



SECTION B-B



SECTION F-F

17	HINGE-2	6		IS:2062	
16	DOOR HINGE SNAP HEAD RIVET STEEL 20x110	6		IS:1929, STEEL	
15	VERTICAL FLANGE RH 10x100x262, L=2350	1		IS:2062	OPPOSITE TO ITEM-10
14	PLAIN WASHER, M18	4		STEEL, IS:2016	
13	HOOK	2		IS:2062	
12	CHANNEL FOR FIXING LOCKING OF BARREL LOCK	1		IS:2062	
11	RAIN WATER GUTTER	1		IS:2062	
10	VERTICAL ANGLE LH 10x100x262, L=2350	1		IS:2062	
9	CHANNEL 100X50X5, L=2450	1		IS:2062	
8	ANGLE 85X85X10, L=2450	1		IS:2062	
7	PIN FOR FOOT PLATE	4		IS:2062	
6	HINGE	4		IS:2062	
5	RIB-3	2		IS:2062	
4	RIB-2	2		IS:2062	
3/3A	RIB-1	2		IS:2062	
2	PLATE 140X458	1		IS:2062	
1	PLATE 5X140X1065	2		IS:2062	

INDIAN RAILWAYS	
ICF/RCF TYPE COACHES	
MODIFICATION IN ENDWALL FOR AUTOMOBILE CARRIER COACH WITH SIDE ENTRY	
RDSO/CG/DRG/21042	

- NOTE:-
- ALL WELDING JOINTS SHOULD BE IN ACCORDANCE WITH STRICT COMPLIANCE WITH WELDING PROCEDURE NORMS.
 - QTY. MENTIONED IN BOM ARE FOR EACH ENDWALL.
 - ITEM-15 IS MIRROR IMAGE OF ITEM-10.
 - SUITABLE GRADE OF IS:2062 TO ITEMS MENTIONED IN BOM SHALL BE USED.
 - ITEM NO.17 SHALL BE WELDED ALL AROUND, ADDITIONALLY PLUG WELDING SHALL BE DONE AT THE LOCATIONS OF HOLES PROVIDED FOR THE PURPOSE.
 - RIVET HEAD TO BE FORMED ON ITEM -16 SUITABLY.
 - ITEM-3 WILL BE APPLICABLE FOR COACHES WITH SCREW COUPLING COACHES AND ITEM-3A WILL BE APPLICABLE FOR CBC FITTED COACHES.

①	STD/4/23	DESCRIPTION	CKD	DATE
ALT.	ITEM	AUTHY.		

CDIC NO. :-	B.G.	R.D.S.O.	ICG
-------------	------	----------	-----