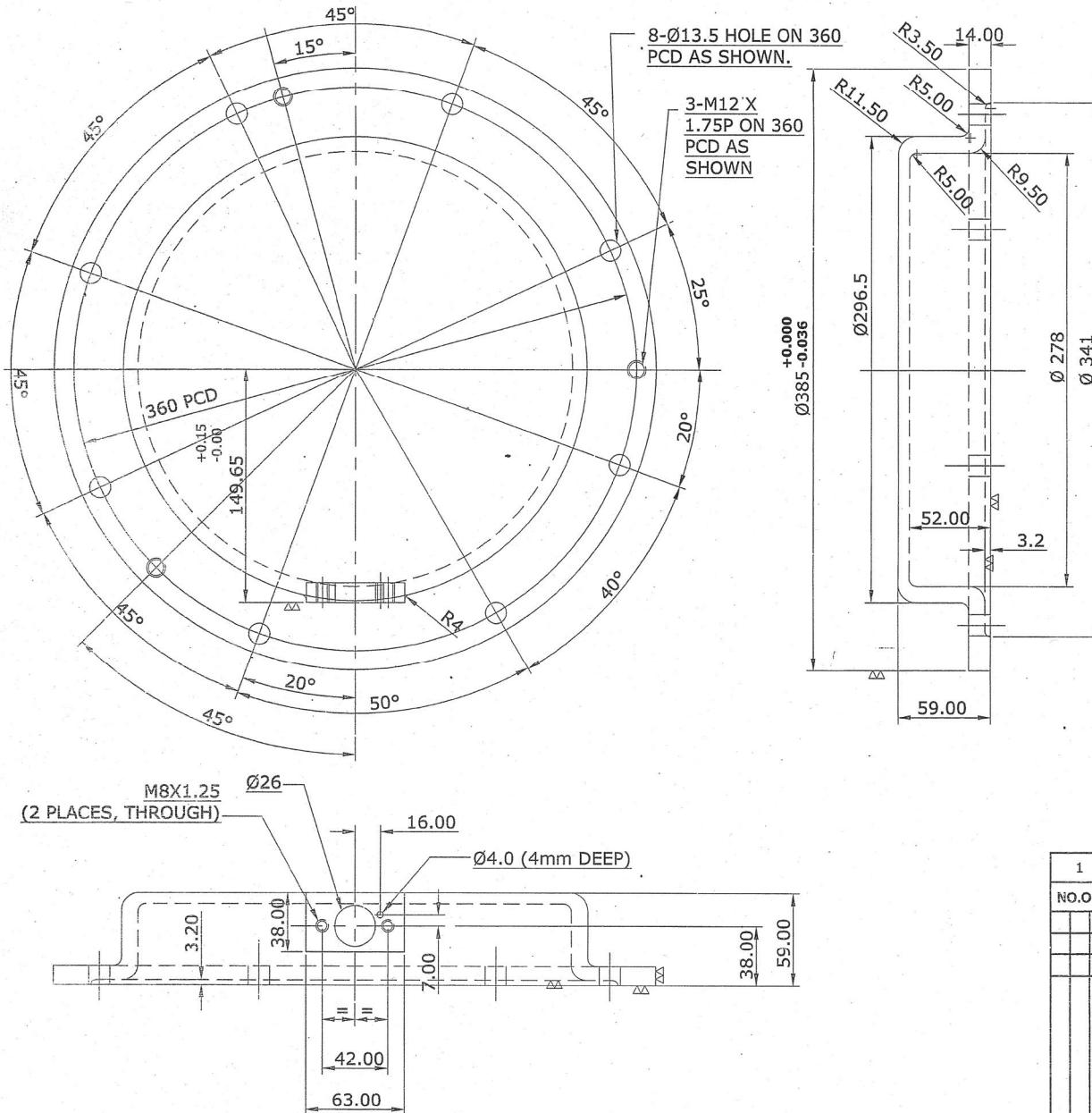


4937800/2026/O/o WM/Design/DMW/PTA


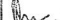

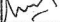


ALT. NO.	ALTERATIONS	CHD SSE/D	SUP.CHD SSE/D	VALIDATED WM/D	DATE
(Z)	DRAWING REVISED AND REDRAWN VIDE CME'S APPL DATED 19-3-14.	<i>[Signature]</i>	<i>[Signature]</i>	<i>[Signature]</i>	20/3/14
(Y)	NOTE NO.3 REVISED VIDE CME'S APPROVAL DT.02-01-2015.	<i>[Signature]</i>	<i>[Signature]</i>	<i>[Signature]</i>	13/01/15

NOTE:-

GENERAL REQUIREMENTS:-

- ALL DIMENSIONS ARE IN MM, UNLESS OTHERWISE STATED.
- THE DIMENSIONS INDICATED ON THE RELEVANT DRAWING ARE FOR THE FINISH-MACHINED COMPONENTS. THE WORKING DRAWING OF THE PATTERN AND THE PATTERN SHALL BE PREPARED BY THE MANUFACTURER/TENDERER HIMSELF. RESPONSIBILITIES FOR PATTERN DESIGN SHALL BE WITH THE MANUFACTURER/SUPPLIER COMPLETELY.
- ONLY IN CASE OF DEVELOPMENTAL ORDERS OR FIRST TIME SUPPLY, THE FIRM TO SUPPLY ONE SAMPLE FOR APPROVAL & INCORPORATE THE CHANGES, IF ANY, SUGGESTED BY DMW AFTER INSPECTION, BEFORE MANUFACTURING & SUPPLY OF BULK QUANTITY.
- MACHINING VARIATIONS IN THE LINEAR AND ANGULAR DIMENSIONS WITHOUT TOLERANCE INDICATIONS SHALL BE IN ACCORDANCE WITH IS:2102(PART-I).
- WELDING SHALL NOT BE ALLOWED FOR REPAIR OF CASTINGS.
- TECHNICAL REQUIREMENTS:-
- CASTING SHOULD BE PROCURED FROM STEEL FOUNDRIES COMPLYING THE REQUIREMENTS OF ASSURANCE INCLUDING PERSONNEL AND EQUIPMENT AS PER GRADE 'A' FOUNDARY OF IS: 12117.
- COMPONENT SHOULD BE MACHINED ON CNC MACHINE ONLY AND 10% COMPONENTS SHOULD BE CHECKED ON CMM FOR VERIFICATION OF DIMENSIONAL TOLERANCES. THE FIRM SHOULD BE EQUIPPED WITH APPROPRIATE CNC/MACHINES.
- FIRM SHOULD SUBMIT M&P AND TESTING FACILITY AT THE TIME OF TENDERING.
- THE INSPECTION SHALL BE CARRIED OUT IN TWO STAGES:-
- METALLURGICAL INSPECTION OF CASTING
- DIMENSIONAL INSPECTION OF FINISH MACHINED COMPONENTS.
- THE SURFACE OF THE CASTINGS SHALL BE FREE OF MOULD AND CORE SAND AND ANY UNEVENNESS IMPAIRING THE USABILITY OF THE CASTINGS. SURFACE ROUGHNESS OF CASTING SHOULD BE 25Ra MAXIMUM.
- MATERIAL- SPHEROIDAL GRAPHITE CAST IRON TO SGCI GR-400/15 OF IS:1865(LATEST REV.)
- CASTING SHALL BE SUBJECTED TO RADIOGRAPHICALLY TEST TO CODE ASTM-E 446 LEVEL - I (5% OFFERED QUANTITY SELECTED AT RANDOM).
- APPLY ANTI RUST PRIMER ON ALL UNMACHINED SURFACES AND ANTI RUST COATING ON MACHINED SURFACES
- PACKING AND MARKING:-
- SUITABLY MARKED AND FINISHED COMPONENTS SHALL BE PACKED TO PREVENT CORROSION AND DAMAGE DURING TRANSPORT.

1	COVER		1	SEE NOTE 11.				
NO.OFF	DESCRIPTION		ITEM	PART NO.	MATERIAL & SPECIFICATION			
			SUPERSEDES	SCALE	VALIDATED	20 ³ / ₁₄	WM/D	
			LOCO DRAWING OFFICE		SUPER CHD.	20 ³ / ₁₄	SSE/D	
	<div>COVER (N.D.END)</div> <div>FOR AC MOTOR TYPE 1TB 2622/2525 OTA-02</div> <div>(FOR HHP LOCO)</div>				CHD.	20 ³ / ₁₄	SSE/D	
					DRAWN	20 ³ / ₁₄	JE	
					DATE	DESGN.	INITIAL	
<div>DIESEL LOCO MODERNISATION WORKS</div> <div>PATIALA</div>					ALT. NO.	<input checked="" type="checkbox"/> Y	<input type="checkbox"/>	<input type="checkbox"/>
					DRG NO.	2/DMW/M/TM-591		